

EnCana Oil & Gas (USA) Inc.

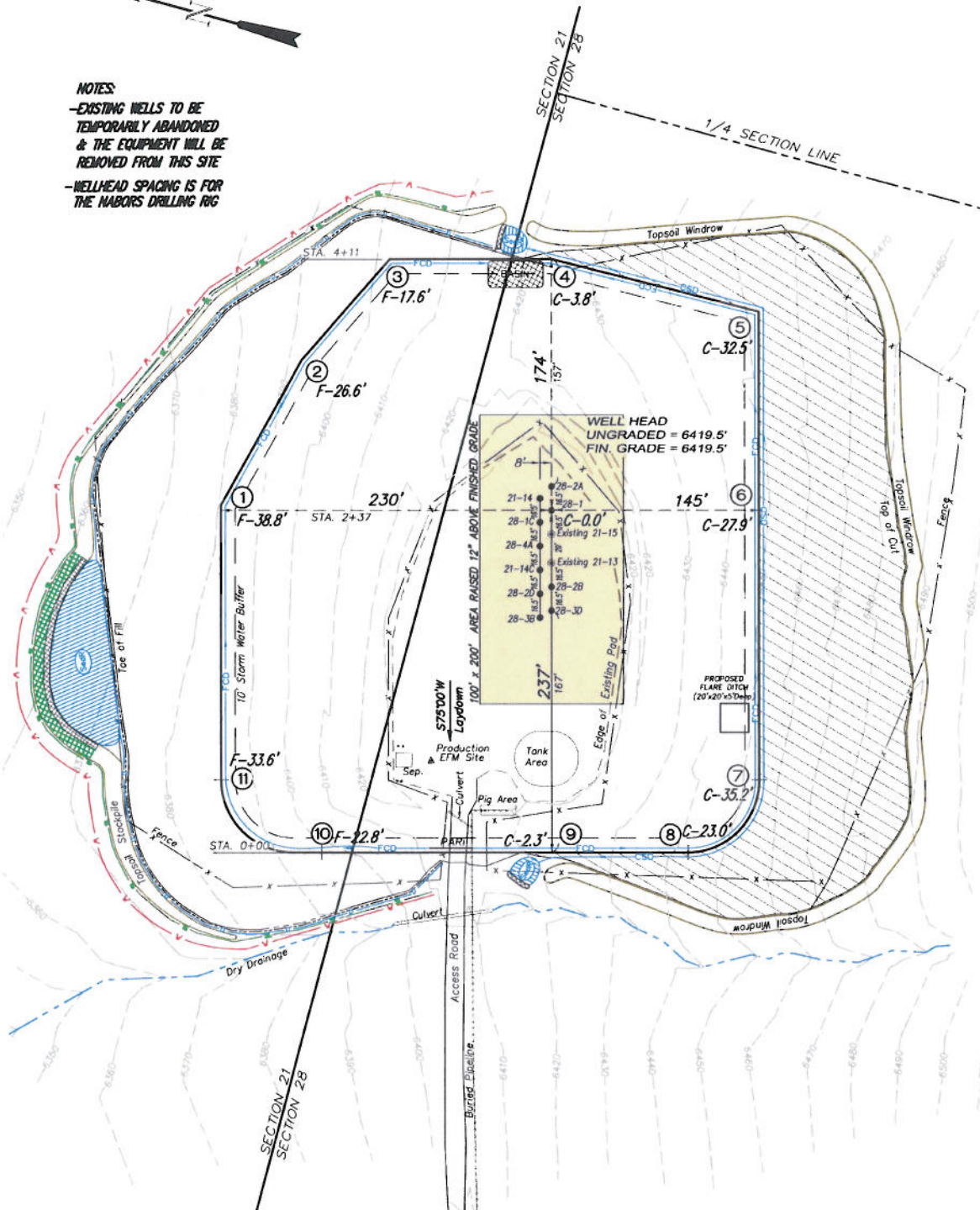
PC28 Well Pad

NE1/4 NW1/4, SECTION 28, T7S, R95W, 6th P.M.

WELL PAD LAYOUT

NOTES:

- EXISTING WELLS TO BE TEMPORARILY ABANDONED & THE EQUIPMENT WILL BE REMOVED FROM THIS SITE
- WELLHEAD SPACING IS FOR THE NABORS DRILLING RIG



Total Surface Disturbance = 6.35 Acres
(See Sheet 4 for Details)

NOTES:

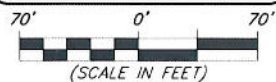
- (1) Slope Track and/or Terrace all Slopes and Piles
- (2) Erosion Control & Seed Topsoil
- (3) Erosion Control & Seed Outside
- (4) Slope away from Substructure Areas 1% to 3% to Flow Control

LEGEND

- SLASH
- ST - SEDIMENT TRAP
- SEDR - SEDIMENT RESERVOIR
- R.O.D. - RUN-ON DIVERSION
- PERIMETER CONTROL (WATTLIES)
- CSD - CUT SLOPE DIVERSION (BERM TOE OF CUT SLOPE)
- 0 - FILL DIVERSION TO SEDIMENT TRAP
- VGB - VEGETATION BUFFER (UNDISTURBED LAND INSIDE PC)
- FCD - FLOW CONTROL DITCH
- PAR - PAD/ACCESS ROAD INTERFACE
- LEVEL SPREADER
- TOE BERM (PLACED AT TOE OF ALL FILL SLOPES/STOCKPILES)
- TOPSOIL BERM
- SEED, ECB & FLEX
- SEED

SURFACE DISTURBANCE (IN ACRES)

Well Pad	3.24
Side Slopes	2.2
Stockpiles & Stormwater	0.91
TOTAL	6.35



906 Main Street
Evanston, Wyoming 82930
Phone No. (307) 789-4545

Well Pad Layout

Project No. 10-04-63
Date Drawn: 11/09/10

Scale: 1" = 70'

Date Surveyed: 8/11/10
Latest Revision Date: 9/12/11

SHEET

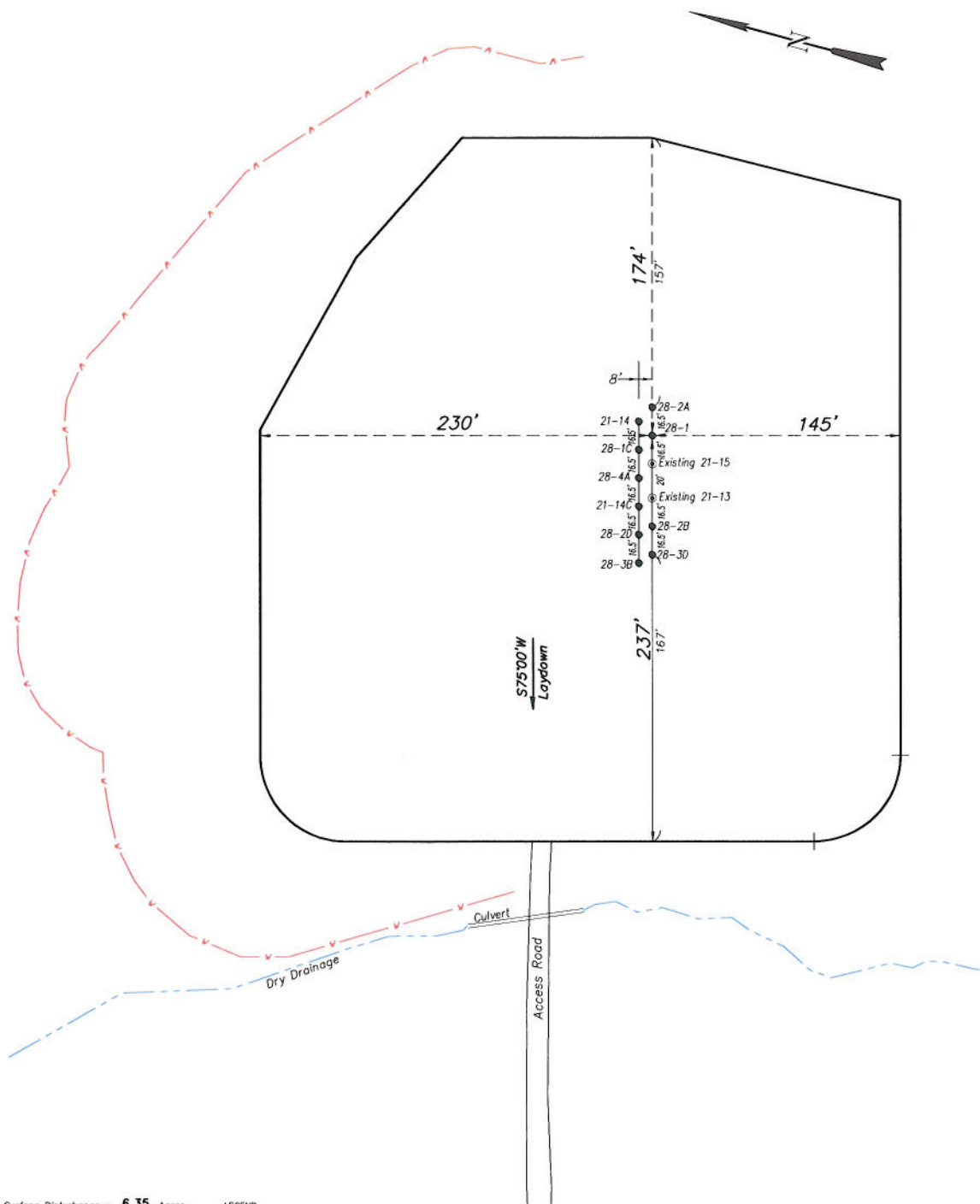
3
OF 10

EnCana Oil & Gas (USA) Inc.

PC-28 Well Pad

NE1/4 NW1/4, SECTION 28 T7S, R95W, 6th P.M.

PRE-CONSTRUCTION PLAT



Total Surface Disturbance = 6.35 Acres
(See Sheet 4 for Details)

NOTES:

- (1) Slope Track and/or Terrace at Slopes and Piles
- (2) Erosion Control & Seed Topsoil
- (3) Erosion Control & Seed Outside
- (4) Slope away from Substructure Areas 1% to 3% to Flow Control

LEGEND

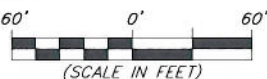
- SLASH
- ST = SEDIMENT TRAP
- SePR = SEDIMENT RESERVOIR
- R.O.D. = RUN-ON DIVERSION
- W = PERIMETER CONTROL (WATTLES)
- CSD = CUT SLOPE DIVERSION (BERM TOE OF CUT SLOPE)
- O = FILL DIVERSION TO SEDIMENT TRAP
- VOB = VEGETATION BUFFER (UNDISTURBED LAND INSIDE PC)
- FCO = FLOW CONTROL DITCH
- PARI = PAD/ACCESS ROAD INTERFACE
- LEVEL SPREADER
- TOE BERM (PLACED AT TOE OF ALL FILL SLOPES/STOCKPILES)
- TOPSOIL BERM
- SEED, ECB & FLEX
- SEED

PRE-CONSTRUCTION PHASE COMPLETE,
AUTHORIZATION TO CONTINUE
CONSTRUCTION.

SIGNATURE: _____

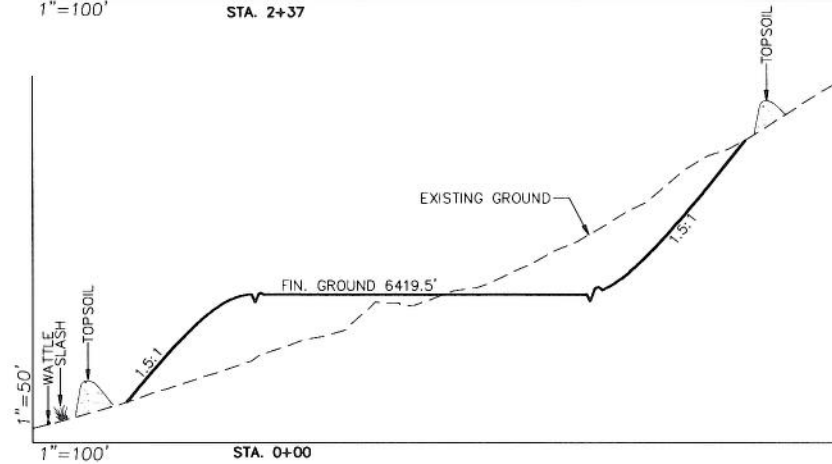
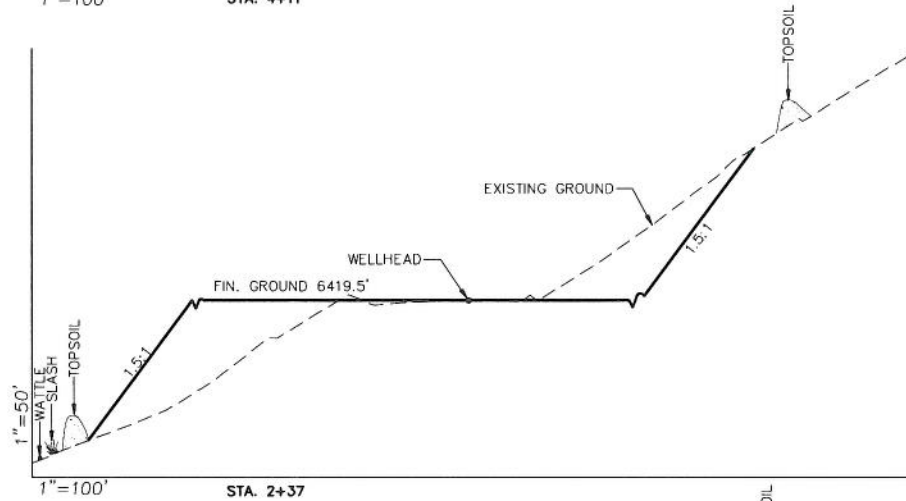
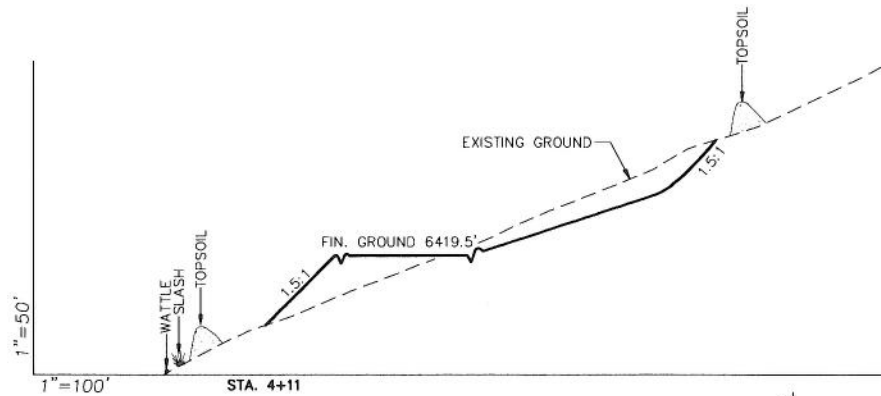


906 Main Street
Evanston, Wyoming 82930
Phone No. (307) 789-4545



Pre-Construction		Scale: 1" = 60'	SHEET
Project No.	10-04-63	Date Surveyed: 8/11/10	3a
Date Drawn: 11/09/10		Latest Revision Date: 9/12/11	
			OF 10

EnCana Oil & Gas (USA) Inc.
PC-28 Well Pad
CROSS SECTIONS



NOTE:
 ALL CUT AND FILL
 SLOPES ARE AT 1.5:1
 UNLESS OTHERWISE
 NOTED.

SURFACE DISTURBANCE (IN ACRES)	
Well Pad	3.24
Side Slopes	2.2
Stockpiles & Stormwater	0.91
TOTAL	6.35

EARTHWORK QUANTITIES (in Cubic Yards w/ 0% shrink/swell)				
ITEM	CUT	FILL	6" TOPSOIL EXCESS	
PAD	52332	52332	Topsail not included in	0
PIT	0	0	Excavation	0
TOTALS	52332	52332	4364	0



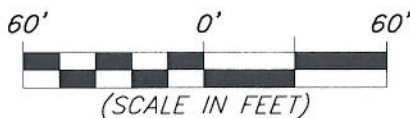
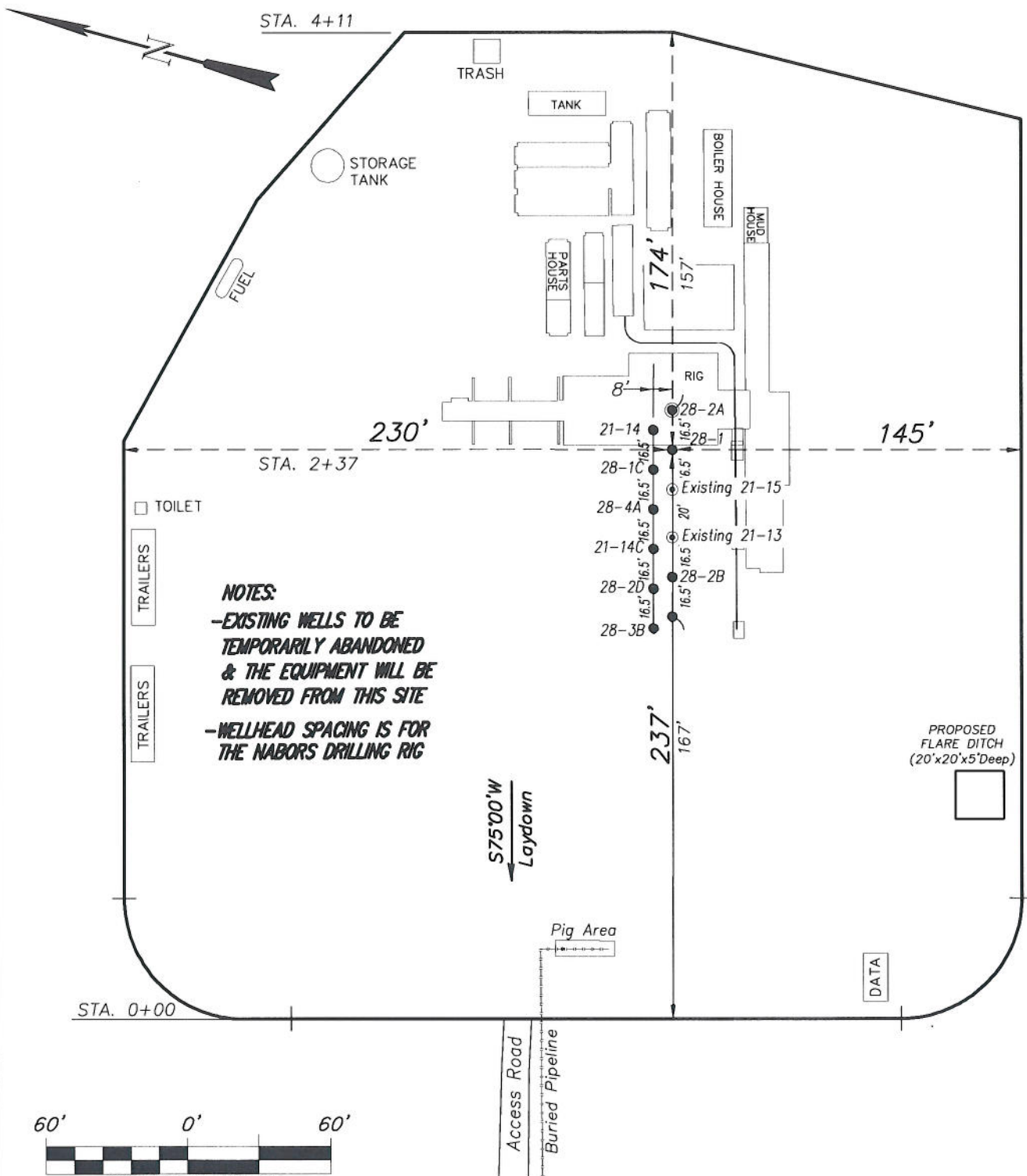
908 Main Street
 Evanston, Wyoming 82930
 Phone No. (307) 789-4545

Cross Sections		Scale: As Shown		SHEET	
Project No.	10-04-63	Date Surveyed:	8/11/10	4	OF 10
Date Drawn:	11/09/10	Latest Revision Date:	9/12/11		

EnCana Oil & Gas (USA) Inc.

PC-28 Well Pad

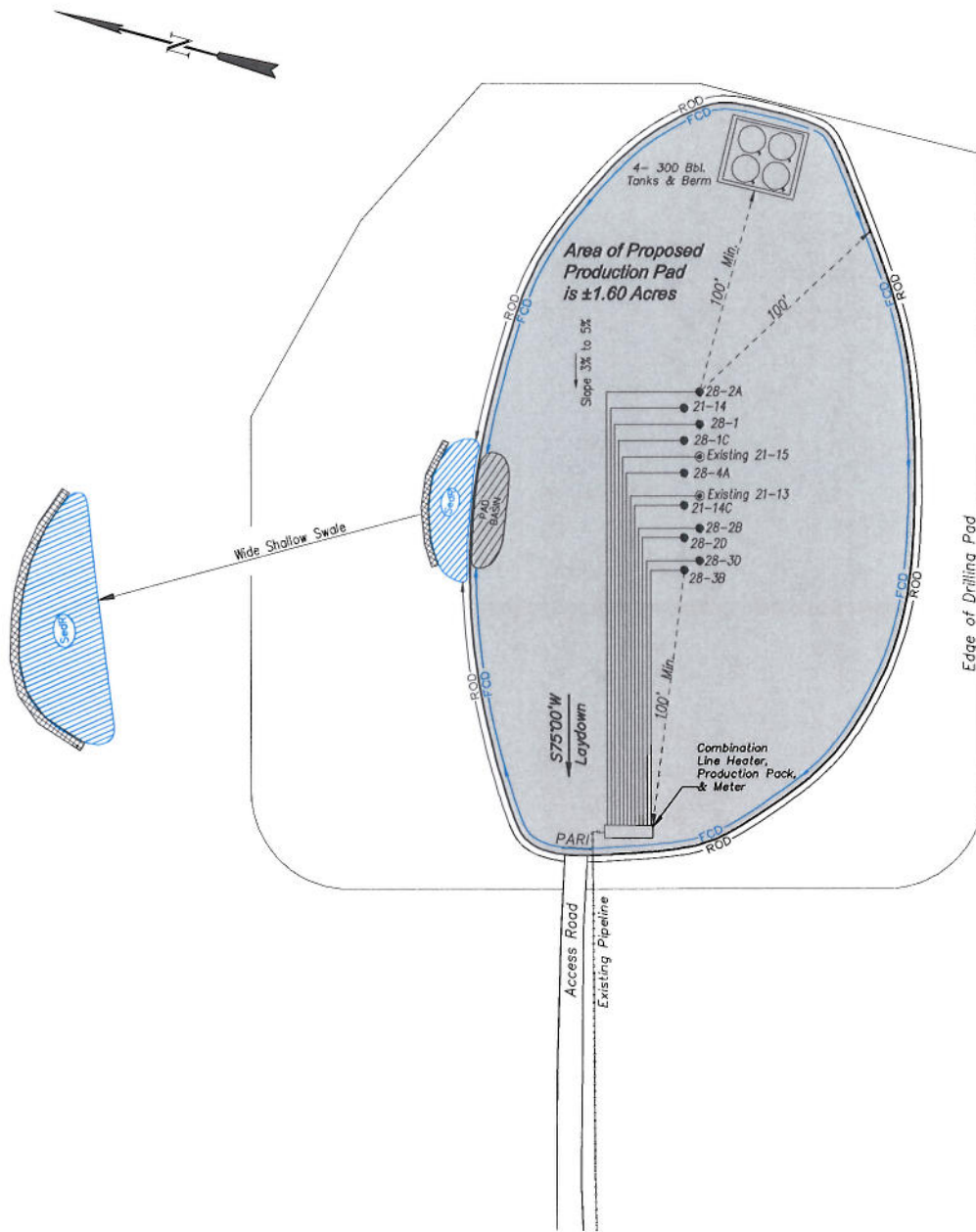
TYPICAL RIG LAYOUT



906 Main Street
Evanston, Wyoming 82930
Phone No. (307) 789-4545

Rig Layout		Scale: 1" = 60'	SHEET
Project No.	10-04-63	Date Surveyed: 8/11/10	5 OF 10
Date Drawn: 11/09/10	Latest Revision Date: 9/12/11		

EnCana Oil & Gas (USA) Inc.
PC-28 Well Pad
PRODUCTION SCHEMATIC



NOTES:

1. Set Tanks High so pad Entrance & Tank Area Can Drain to Pad Basin
2. Gravel Pad 75' from Wells & Around Tanks and Separators
3. Pad Drains to Pad Basin at a 3% to 5% slope
4. BMP Selection and Position may change Depending on Actual Conditions Encountered During the Construction Process

NOTE:

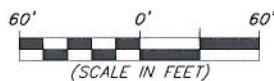
Actual Equipment Layout and Reclaimed Pad Surface Area May Change due to Production Requirements or Site Conditions.

ESTIMATED AREAS
 RECLAIMED AREA: 4.75 ACRES
 UNRECLAIMED AREA: 1.60 ACRES
 (PRODUCTION PAD)

- LEGEND:**
- SLASH = SLASH
 - ST = SEDIMENT TRAP
 - SedR = SEDIMENT RESERVOIR
 - R.O.D. = RUN-ON DIVERSION
 - PERMETER CONTROL (WATTLES)
 - CSD = CUT SLOPE DIVERSION (BERM TOE OF CUT SLOPE)
 - D = FILL DIVERSION TO SEDIMENT TRAP
 - VOB = VEGETATION BUFFER (UNDISTURBED LAND INSIDE PC)
 - FCO = FLOW CONTROL DITCH
 - PARI = PAD/ACCESS ROAD INTERFACE
 - LEVEL SPREADER
 - TOE BERM (PLACED AT TOE OF ALL FILL SLOPES/STOCKPILES)
 - SEED, ECB & FLEX
 - SEED



906 Main Street
 Evanston, Wyoming 82930
 Phone No. (307) 789-4545

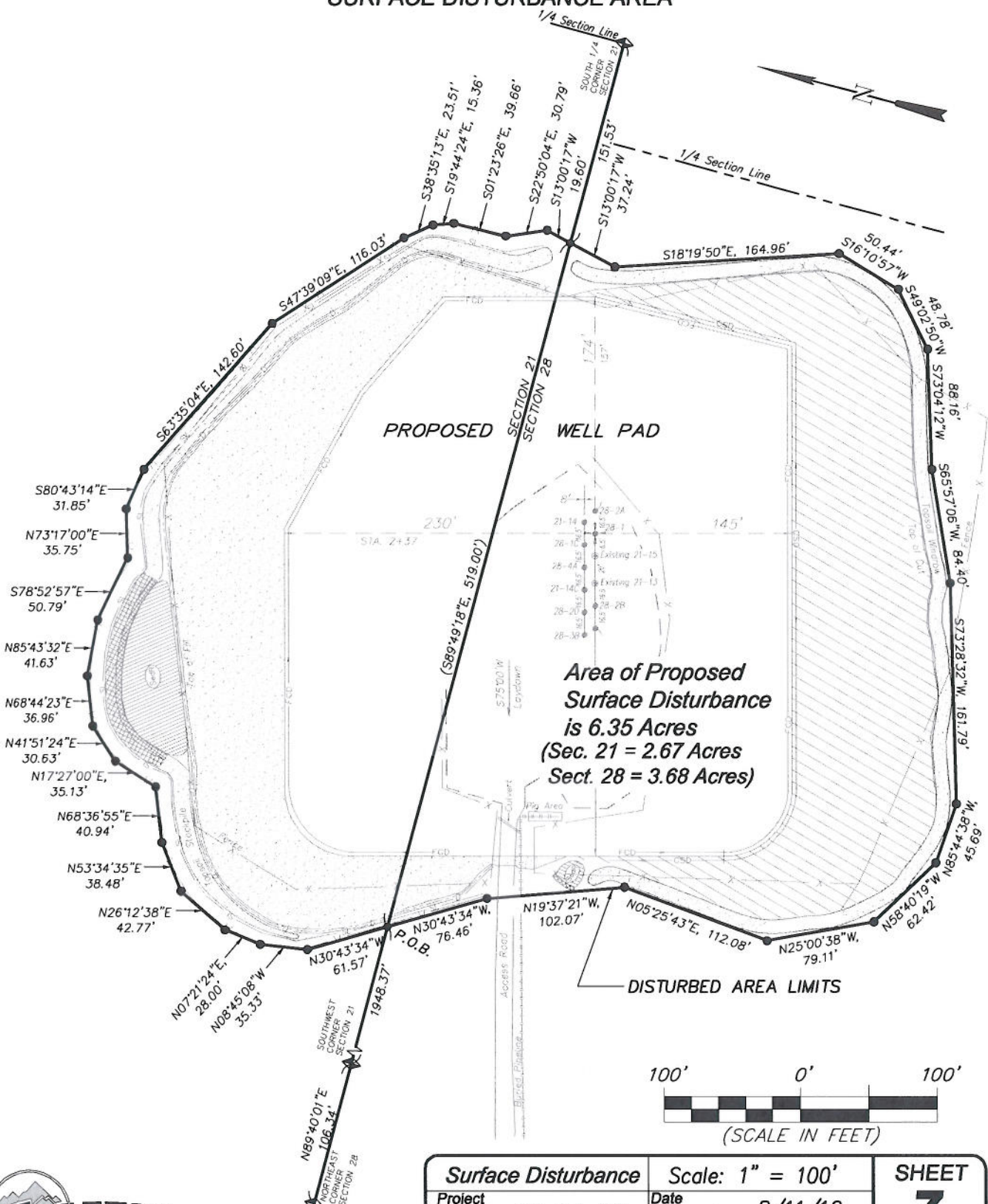


Production Schematic
 Project No. 10-04-63
 Date Drawn: 11/09/10

Scale: 1" = 60'
 Date Surveyed: 8/11/10
 Latest Revision Date: 9/12/11

SHEET
6
OF 10

EnCana Oil & Gas (USA) Inc.
PC-28 Well Pad
Section 28, T7S, R95W, 6th P.M.
SURFACE DISTURBANCE AREA



906 Main Street
 Evanston, Wyoming 82930
 Phone No. (307) 789-4545

<i>Surface Disturbance</i>		Scale: 1" = 100'		SHEET 7 OF 10
Project No.	10-04-63	Date Surveyed:	8/11/10	
Date Drawn:	11/09/10	Latest Revision Date:	9/12/11	