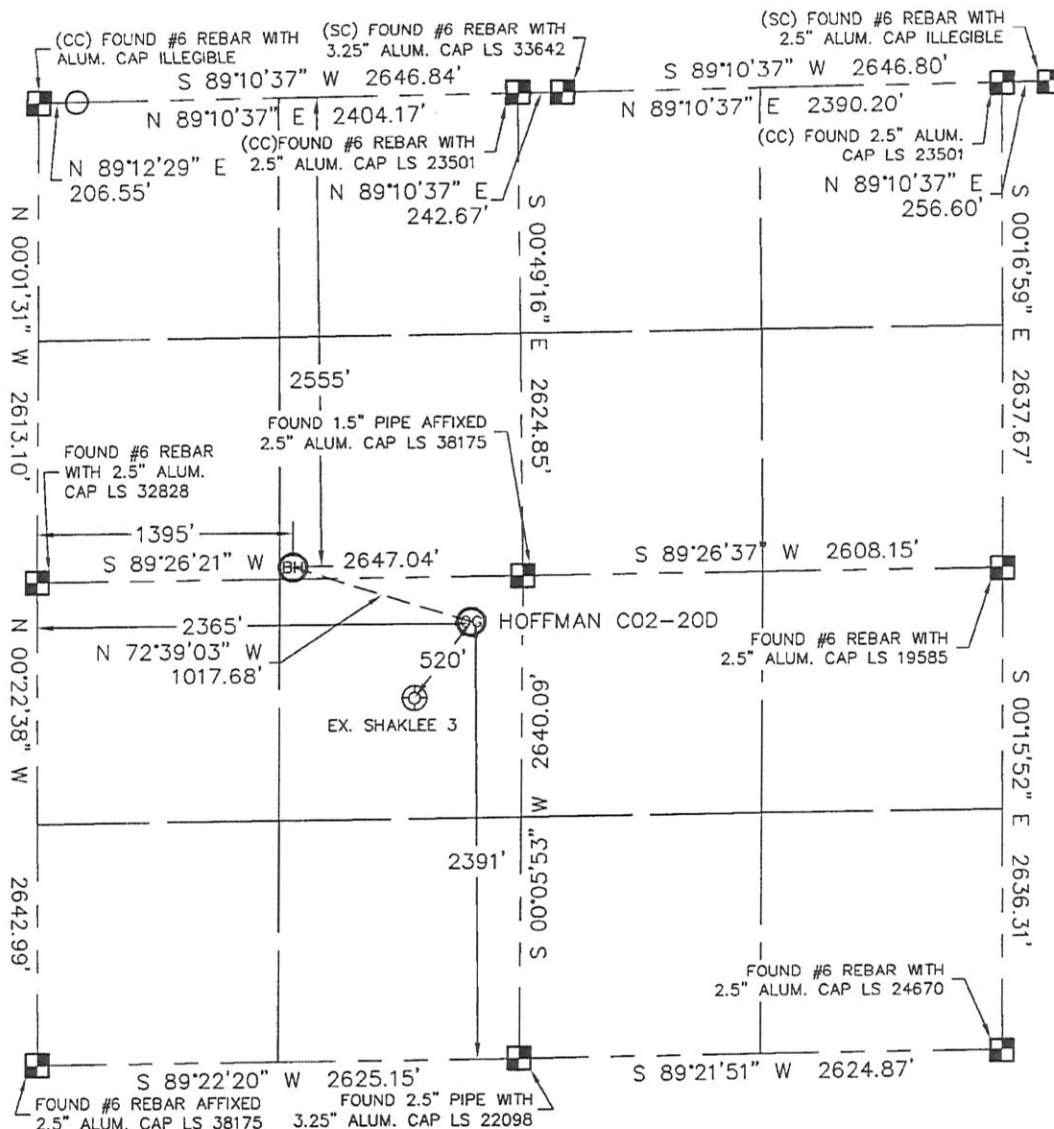


Lat40°, LLC 1635 Foxtrail Drive, Suite 325 Loveland, CO 80538

WELL LOCATION CERTIFICATE

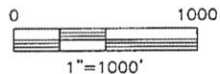
THIS MAP DOES NOT REPRESENT A BOUNDARY SURVEY

SECTION: 2
TOWNSHIP: 4N
RANGE: 64W



In accordance with a request from Matt Campbell with Noble Energy Inc., Lat40°, LLC has determined the surface location of the HOFFMAN CO2-20D to be 2391' from the SOUTH line and 2365' from the WEST line and the bottom hole to be 2555' from the NORTH line and 1395' from the WEST line as measured at right angles from the section lines of Section 2, Township 4 North, Range 64 West of the Sixth Principal Meridian, County of Weld, State of Colorado.

I hereby state that this Well Location Certificate was prepared by me, or under my direct supervision, that the fieldwork was completed on 12-14-10, for and on behalf of Noble Energy Inc.. That this is not a Land Survey Plat or an Improvement Survey Plat, and that it is not to be relied upon for establishment of fence, building, or other future improvement lines.



NOTE:

- 1) Bearings shown are Grid Bearings of the Colorado State Plane Coordinate System, North Zone, North American Datum 1983/2007. The lineal dimensions as contained herein are based upon the "U.S. Survey Foot."
- 2) Ground elevations are based on an observed GPS elevation (NAVD 1988 DATUM).
- 3) NEAREST EXISTING WELL: SHAKLEE 3 520'
- 4) IMPROVEMENTS: See LOCATION DRAWING for all visible improvements within 400' of disturbed area.
- 5) SURFACE USE: CROP DRYLAND
- 6) INSTRUMENT OPERATOR: BRIAN BRINKMAN

SURFACE LOCATION
LATITUDE: 40.34074°N
LONGITUDE: 104.51856°W
PDOP: 1.8
ELEV: 4620
1/4, 1/4: NE1/4SW1/4
NEAREST PROPERTY LINE: 249' NORTH

BOTTOM HOLE
LATITUDE: 40.34160°N
LONGITUDE: 104.52203°W

NOTE

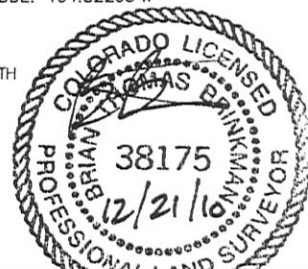
According to Colorado law, you must commence any legal action based upon any defect in this W.L.C. within three years after you discover such defect. In no event, may any action based upon any defect in this survey be commenced more than ten years after the date of the certificate shown hereon. (13-80-105 C.R.S.)

LEGEND

- = ALIQUOT MONUMENT AS DESCRIBED
- = CALCULATED POSITION

Brian T. Brinkman—On behalf of Lat40° LLC
Colorado Licensed Professional
Land Surveyor No. 38175

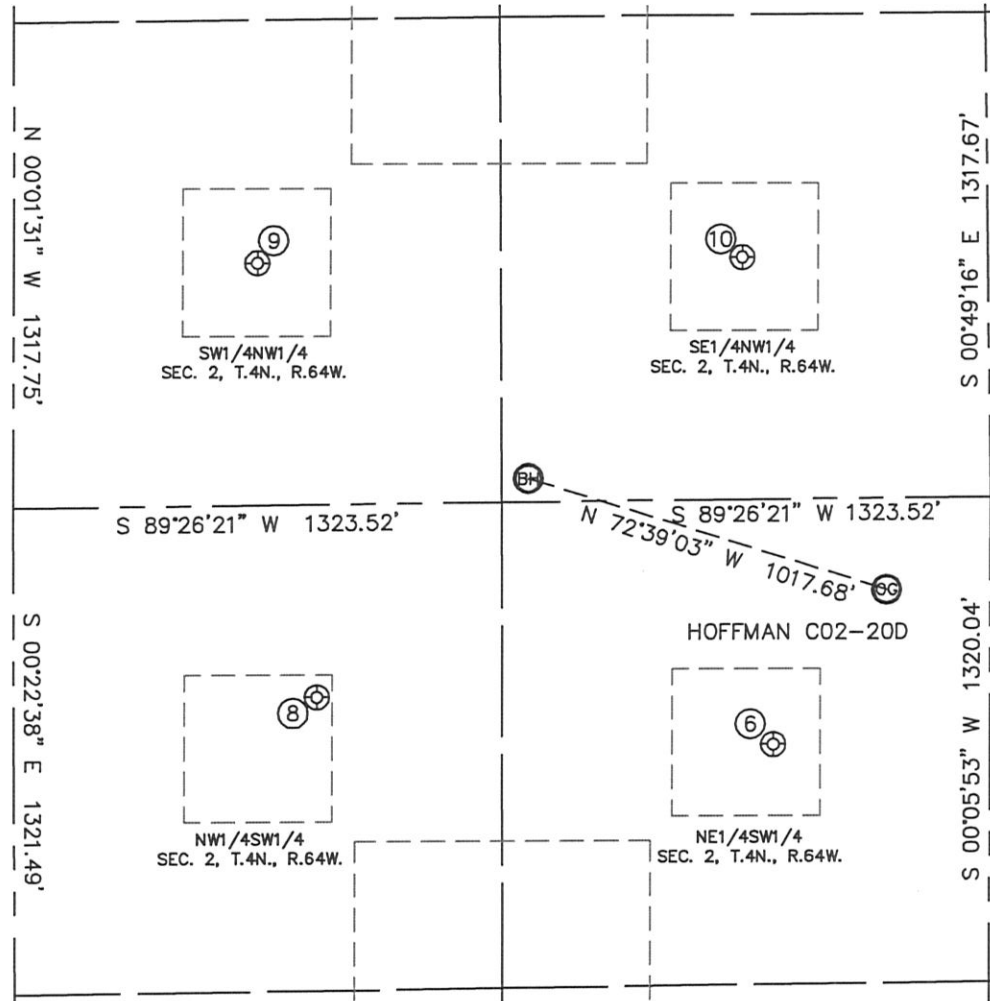
PROJECT#: 2010170



SITE SKETCH

HOFFMAN C02-20D

SECTION: 2
TOWNSHIP: 4N
RANGE: 64W



⑥
SHAKLEE 3
NE1/4SW1/4
1974' FSL
2056' FWL
LAT-40.33959°N
LONG-104.51968°W
PDOP: 1.6
ELEV: 4622

⑧
BOOT HILLS FARMS 2-12
NW1/4SW1/4
2120' FSL
820' FWL
LAT-40.33999°N
LONG-104.52410°W
PDOP: 1.7
ELEV: 4635

⑨
MCFERREN 5-2
SW1/4NW1/4
1959' FNL
660' FWL
LAT-40.34323°N
LONG-104.52485°W
PDOP: 1.9
ELEV: 4640

⑩
FHA 2-1
SE1/4NW1/4
1964' FNL
1973' FWL
LAT-40.34323°N
LONG-104.51994°W
PDOP: 1.7
ELEV: 4636

