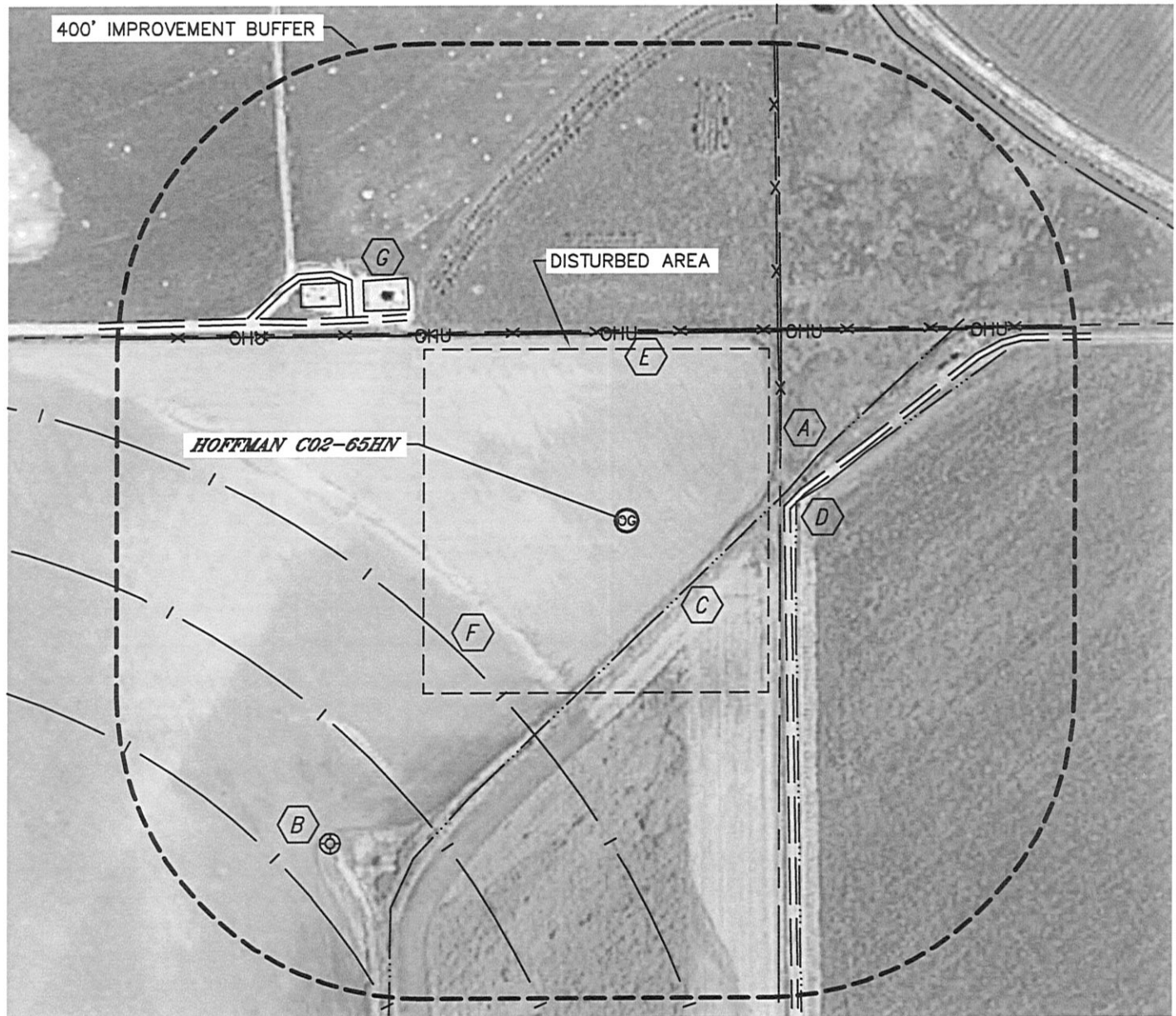


LOCATION DRAWING

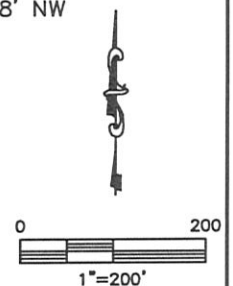
HOFFMAN C02-65HN

SECTION: 2
TOWNSHIP: 4N
RANGE: 64W



IMPROVEMENTS:

- | | | | |
|----------|----------------------------|----------|---|
| A | FENCE 223' NE, 246' N | F | IRRIGATION PIVOT TRACK
275' SW, 455' SW, 635' SW |
| B | EX. SHAKLEE 3 572' SW | G | PRODUCTION FACILITY (NOBLE) 398' NW |
| C | DITCH 118' SE, 221' E | | |
| D | FIELD ROAD 206' E, 390' NW | | |
| E | OVERHEAD UTILITY 245' N | | |



NEAREST: BUILDING 1980' E, PUBLIC ROAD 2380' S,
ABOVE GROUND UTILITY 245' N, RAILROAD 5280'+, PROPERTY LINE 200' E