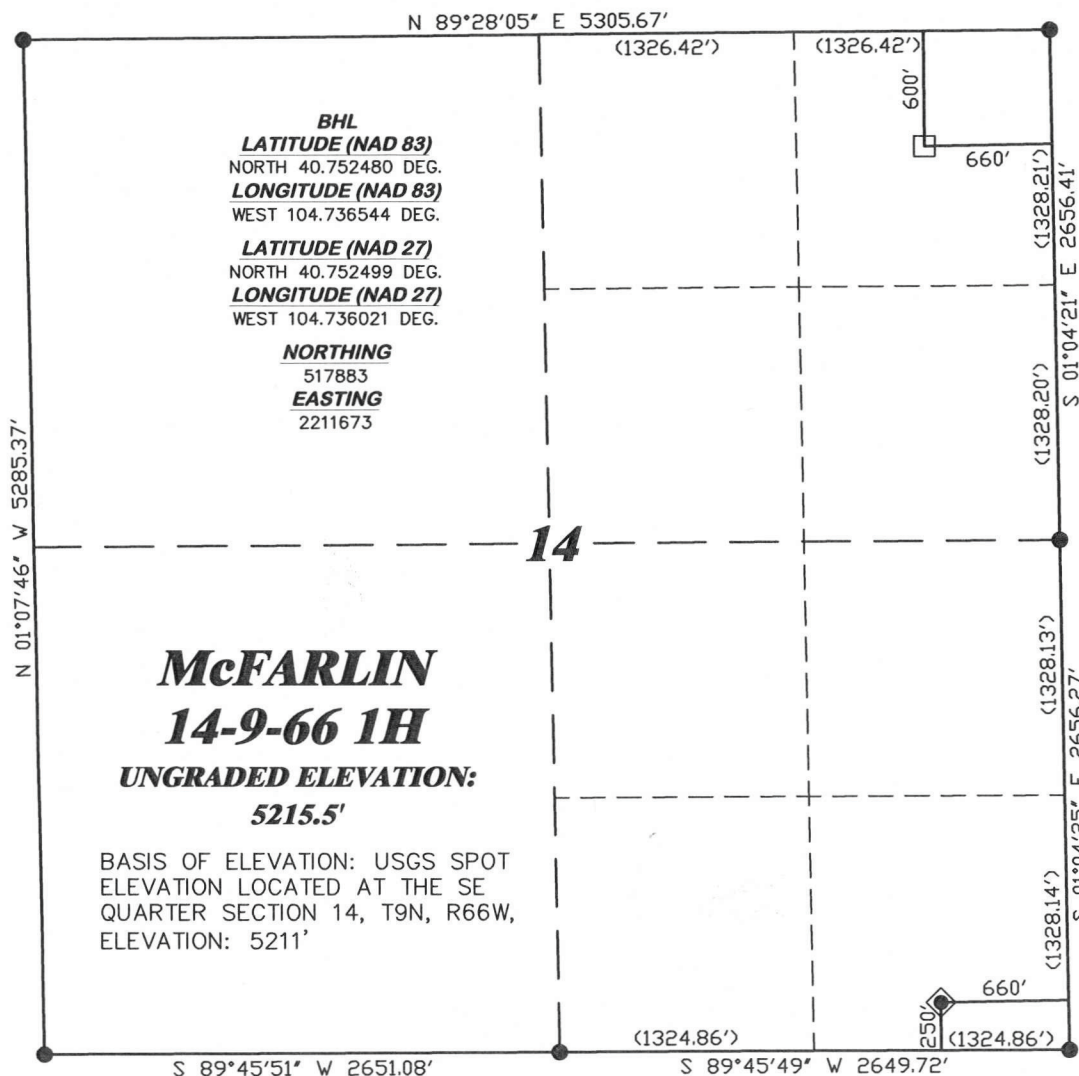


R. 66 W.



SCALE 1" = 1000'

T. 9 N.

LATITUDE (NAD 83)
NORTH 40.740240 DEG.
LONGITUDE (NAD 83)
WEST 104.736381 DEG.

LATITUDE (NAD 27)
NORTH 40.740260 DEG.
LONGITUDE (NAD 27)
WEST 104.735858 DEG.

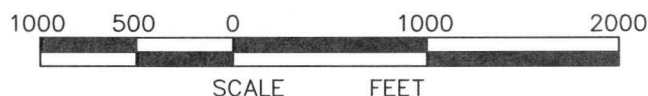
NORTHING
513424.72
EASTING
2211756.42

BASIS OF BEARING/DATUM
SPCS CO NORTH NAD 27
BASED ON NGS TRIANGULATION
POINT "CP NW 25-9-66-1H"

NOTES

PRARIE LANDS
NO EXISTING FEATURES WITHIN
400' RADIUS OF WELL SITE.

GPS OPERATOR PAUL ORME
OBSERVED A PDOP OF 2.2.
ALL GPS OBSERVATIONS ARE IN
COMPLIANCE WITH COGCC RULE No.215.

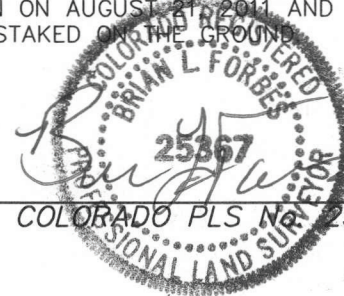


SURVEYOR'S STATEMENT

I, BRIAN L. FORBES, OF ROCK SPRINGS, WYOMING, HEREBY STATE: THIS MAP WAS MADE FROM NOTES TAKEN DURING AN ACTUAL FIELD SURVEY DONE UNDER MY DIRECT SUPERVISION ON AUGUST 21, 2011, AND THAT THIS PLAT CORRECTLY SHOWS THE LOCATION OF McFARLIN 14-9-66 1H AS STAKED ON THE GROUND.

LEGEND

- ◆ WELL LOCATION
- BOTTOM HOLE LOC. (APPROX)
- FOUND MONUMENT
- ▲ PREVIOUSLY FOUND MONUMENT
- CALCULATED CORNER



DRG RIFFIN & ASSOCIATES, INC.
(307) 362-5028 1414 ELK ST., ROCK SPRINGS, WY 82901

DRAWN: 9/20/11 - JMB

SCALE: 1" = 1000'

REVISED: NA

DRG JOB No. 18778

EXHIBIT 1

**PLAT OF DRILLING LOCATION
FOR
CHESAPEAKE ENERGY, LLC.**

**250' F/SL & 660' F/EL, SECTION 14,
T. 9 N., R. 66 W., 6th P.M.
WELD COUNTY, COLORADO**