

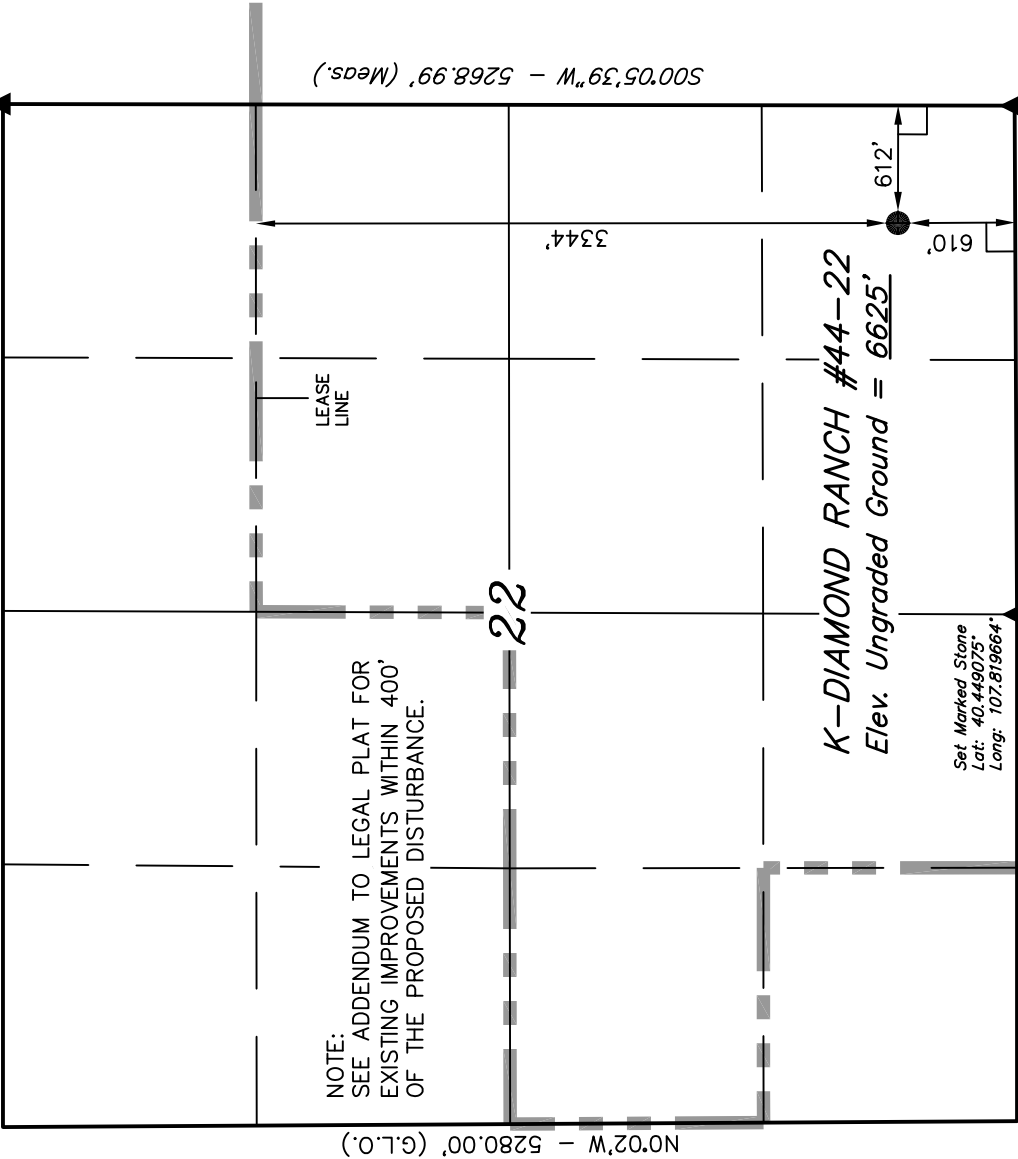
T6N, R93W, 6th P.M.

QUICKSILVER RESOURCES, INC.

Well location, K-DIAMOND RANCH #44-22, located as shown in the SE 1/4 SE 1/4 of Section 22, T6N, R93W, 6th P.M., Moffat County, Colorado.

WEST - 5280.00' (G.L.O.)

Set Marked Stone  
Lat: 40.463569°  
Long: 107.810117°



N0°02'W - 5280.00' (G.L.O.)

NOTE:  
SEE ADDENDUM TO LEGAL PLAT FOR  
EXISTING IMPROVEMENTS WITHIN 400'  
OF THE PROPOSED DISTURBANCE.

500'05'39"W - 5268.99' (Meas.)

LEASE  
LINE

22

3344'

K-DIAMOND RANCH #44-22  
Elev. Ungraded Ground = 6625'

Set Marked Stone  
Lat: 40.449075°  
Long: 107.819664°

WEST - 2639.34' (G.L.O.)

S89°43'46"W - 2649.40' (Meas.)

Set Marked Stone  
Lat: 40.449111°  
Long: 107.810150°

PDOP=1.1

NAD 83 (SURFACE LOCATION)	
LATITUDE = 40°27'02.79"	(40.450775)
LONGITUDE = 107°48'44.44"	(107.812344)
NAD 27 (SURFACE LOCATION)	
LATITUDE = 40°27'02.90"	(40.450806)
LONGITUDE = 107°48'42.18"	(107.811717)
STATE PLANE NAD 83	
N: 1415448.17	E: 2356543.17
STATE PLANE NAD 27	
N: 415447.16	E: 1356701.34

LEGEND:

└─ = 90° SYMBOL

● = PROPOSED WELL HEAD.

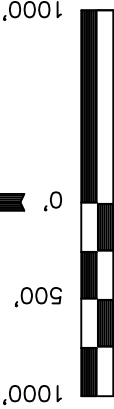
▲ = SECTION CORNERS LOCATED.

BASIS OF ELEVATION

SPOT ELEVATION LOCATED AT THE NORTHEAST CORNER OF SECTION 10, T6N, R93W, 6th. P.M., TAKEN FROM THE HORSE GULCH QUADRANGLE, COLORADO, MOFFAT COUNTY, 7.5 MINUTE QUAD. (TOPOGRAPHIC MAP) PUBLISHED BY THE UNITED STATES DEPARTMENT OF THE INTERIOR, GEOLOGICAL SURVEY. SAID ELEVATION IS MARKED AS BEING 6246 FEET.

BASIS OF BEARINGS

BASIS OF BEARINGS IS A G.P.S. OBSERVATION.



S C A L E

CERTIFICATE

THIS IS TO CERTIFY THAT THE ABOVE PLAT WAS PREPARED FROM FIELD NOTES OF ACTUAL SURVEYS MADE BY ME OR UNDER MY SUPERVISION AND THAT THE SAME ARE TRUE AND CORRECT TO THE BEST OF MY KNOWLEDGE AND BELIEF.

REGISTERED LAND SURVEYOR  
REGISTRATION NO. 17492  
STATE OF COLORADO  
06-28-11

UNTANH ENGINEERING & LAND SURVEYING

85 SOUTH 200 EAST - VERNAL, UTAH 84078

(435) 789-1017

SCALE 1" = 1000'	DATE SURVEYED: 05-26-11	DATE DRAWN: 06-10-11
PARTY G.M. J.R. K.O.	REFERENCES G.L.O. PLAT	
WEATHER WARM	FILE	

QUICKSILVER RESOURCES, INC.