

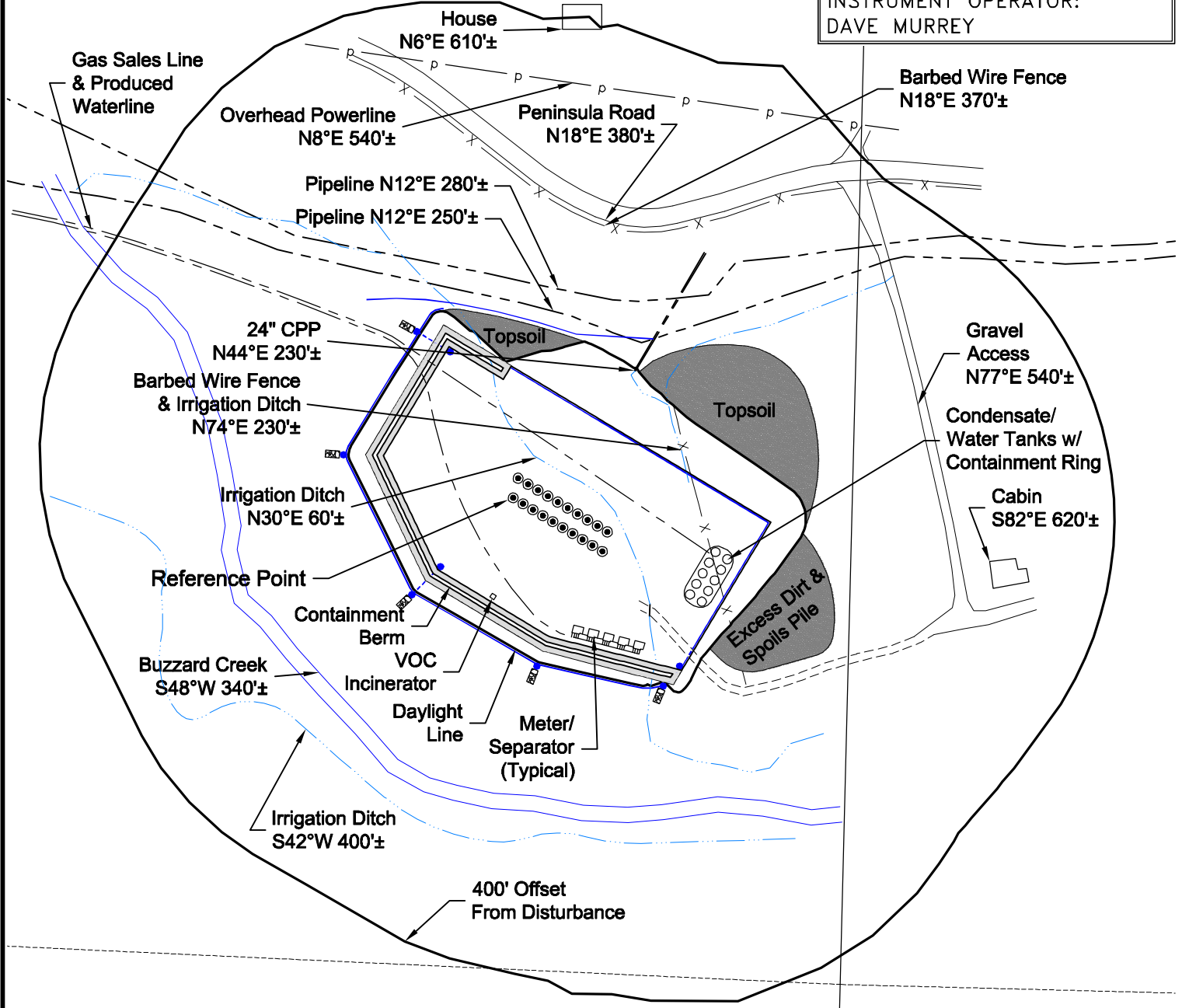
LOCATION DRAWING

VEGETATION:
SCRUB OAK
MOUNTAIN SHRUBS
ASPEN
HAYFIELD

SURFACE USE:
AGRICULTURAL

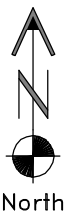
REFERENCE POINT

LATITUDE: 39.26773
LONGITUDE: -107.80384
FOOTAGE: 695 FNL 440 FEL
GROUND ELEVATION: 7078
PDOP: 2.5 DATE: 8/10/2011
INSTRUMENT OPERATOR:
DAVE MURREY



DISTURBANCE ACREAGE:
5.5± DRILLING OPERATIONS
2.0± INTERIM RECLAIM

9/16/11



North

0 200 400
Graphic Scale in Feet
1 inch = 200 feet

GEO SURV

LAND SURVEYING AND MAPPING
LAFAYETTE - WINTER PARK
Ph 303 666 0379 Fx 303 665 6320

LARAMIE ENERGY II LLC
JENSEN 19-01 PAD

NE1/4 NE1/4 SECTION 19 T9S R93W
6th PM MESA COUNTY COLORADO