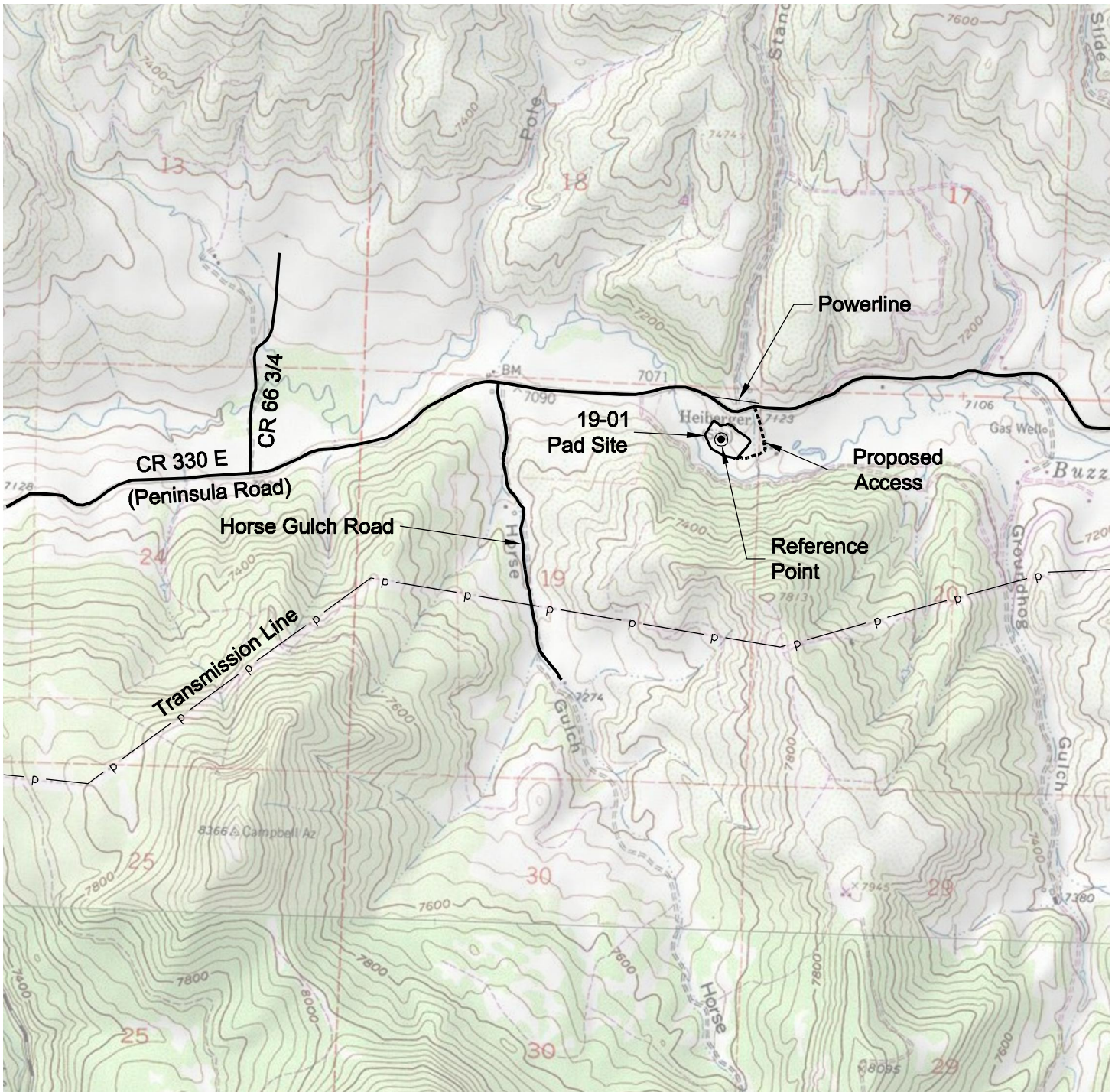


ACCESS ROAD MAP



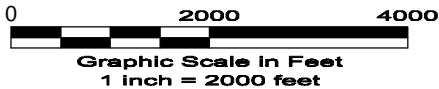
DRIVING DIRECTIONS:

From Town of Collbran, beginning at intersection of Main Street & CR 330 E; East on CR 330 E (aka Peninsula Rd)
 MP 6.4 Pass CR 64.6 (aka Vega Rd) on right; continue east on CR 330 E
 MP 8.5 Pass Horse Gulch Road on right; continue east on CR 330 E
 MP 9.2 Right on access to 19-01 pad
 MP 9.4 Jensen 19-01 pad

9/16/11



North



LAND SURVEYING AND MAPPING
LAFAYETTE - WINTER PARK
 Ph 303 666 0379 Fx 303 665 6320

LARAMIE ENERGY II LLC
JENSEN 19-01 PAD

NE1/4 NE1/4 SECTION 19 T9S R93W
6th PM MESA COUNTY COLORADO