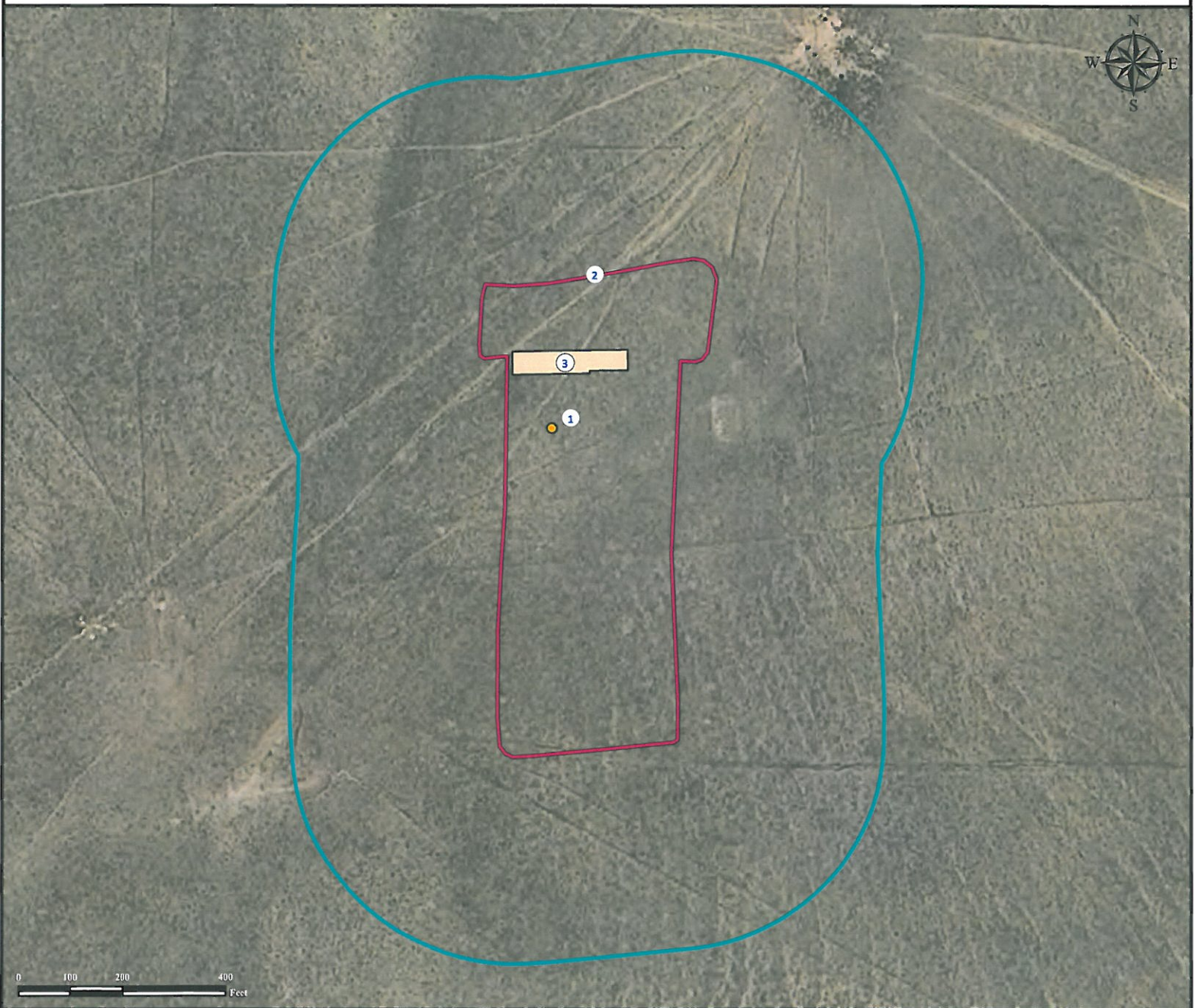


# Location Drawing

## BRUTUS STATE 33-14 1V

NW¼ SE¼ SECTION 14, TOWNSHIP 14 SOUTH, RANGE 62 WEST OF THE 6TH PRINCIPAL MERIDIAN



1. Proposed Well BRUTUS STATE 33-14 1V.

3. Proposed Facility is to be  $\pm 100'$  N.

2. Operational Disturbance Area.

There are no visible improvements within a 400' radius of the disturbed area of the proposed oil and gas location.

### Legend

-  Proposed Well
-  Disturbance Area
-  Proposed Facility
-  400' Radius

### Reference Location

\*\* All Measurements are Made from  
Reference Well BRUTUS STATE 33-14 1V \*\*  
Lat: 38.830056° Long: -104.303930° (NAD83)  
Elevation: 6154 Feet

Surface Use: Rangeland



Use our resources to find yours!  
[www.petro-fs.com](http://www.petro-fs.com)  
(303) 928-7128

Field Date: 09/08/2011  
Drafting Date: 10/06/2011  
Drafter: KLM  
Checked By: BHF

Data Sources:  
- Aerial courtesy of NAIP (2009)

Prepared for:



ULTRA  
RESOURCES,  
INC