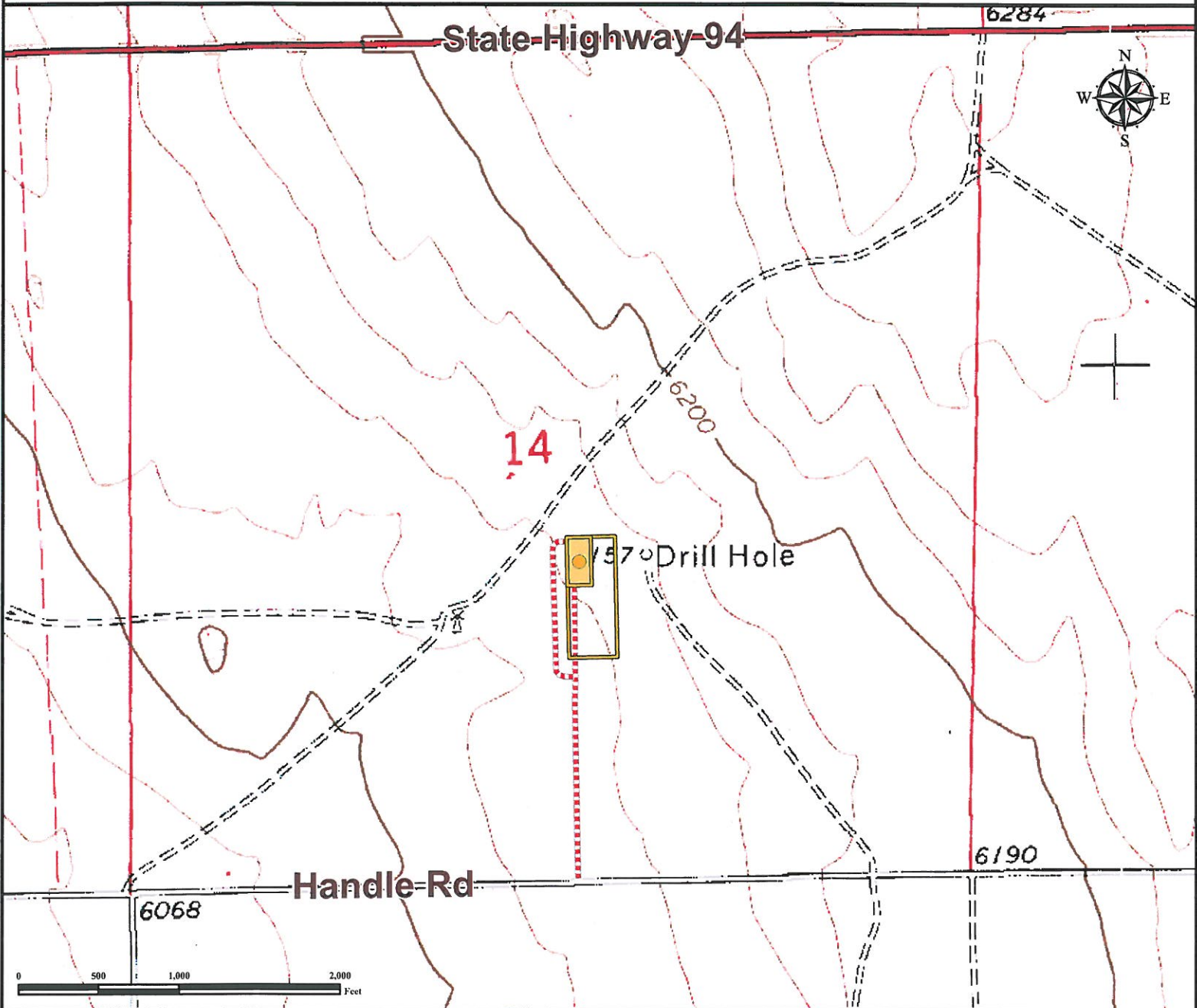


# Access Road Map




## BRUTUS STATE 33-14 1V

NW¼ SE¼ SECTION 14, TOWNSHIP 14 SOUTH, RANGE 62 WEST OF THE 6TH PRINCIPAL MERIDIAN



From Colorado Springs, CO: Start at Exit 139 (US Highway 24) off I25 South. Go east on US Highway 24, Drive 4.6 miles.  
Turn Left on N Powers Blvd, Drive 2.5 miles.  
Turn Right on E Platte Ave, Drive 0.8 miles. Take ramp on right, Drive 0.1 mile. Keep left at fork, Drive 0.1 mile.  
Turn Left on Space Village Ave, Drive 1.5 miles.  
Turn Right on CO-94 (State Highway 94), Drive 15.4 miles.  
Turn Right on S Ellicott Hwy, Drive 1 mile.  
Turn Left on Handle Rd, Drive 4.45 miles.  
Turn Left on Proposed Access Rd and Drive North 0.4 miles to Proposed Well Location


Total distance from Colorado Springs, CO to proposed well location is ±30.85 miles to proposed well location.

Legend	
	Proposed Well
	Proposed Phase 1 Pad
	Proposed Phase 2 Pad
	Proposed Access Road

**Reference Location**

\*\* All Measurements are Made from  
Reference Well BRUTUS STATE 33-14 1V \*\*

Lat: 38.830056° Long:-104.303930° (NAD83)  
Elevation: 6154 Feet

 Use our resources to find yours!  
[www.petro-fs.com](http://www.petro-fs.com)  
 (303) 928-7128

Field Date: 09/08/2011  
 Drafting Date: 09/30/2011  
 Drafter: KLM  
 Checked By: BHF

Data Sources:  
 - TOPO courtesy of USGS

Prepared for:  **ULTRA RESOURCES, INC**