

Encana OIL & GAS (USA) INC.

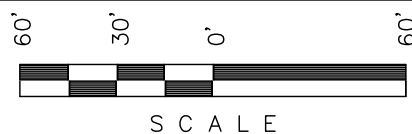
ADDENDUM TO LEGAL PLAT FOR

WELL PAD P08 798

SECTION 8, T7S, R98W, 6th P.M.

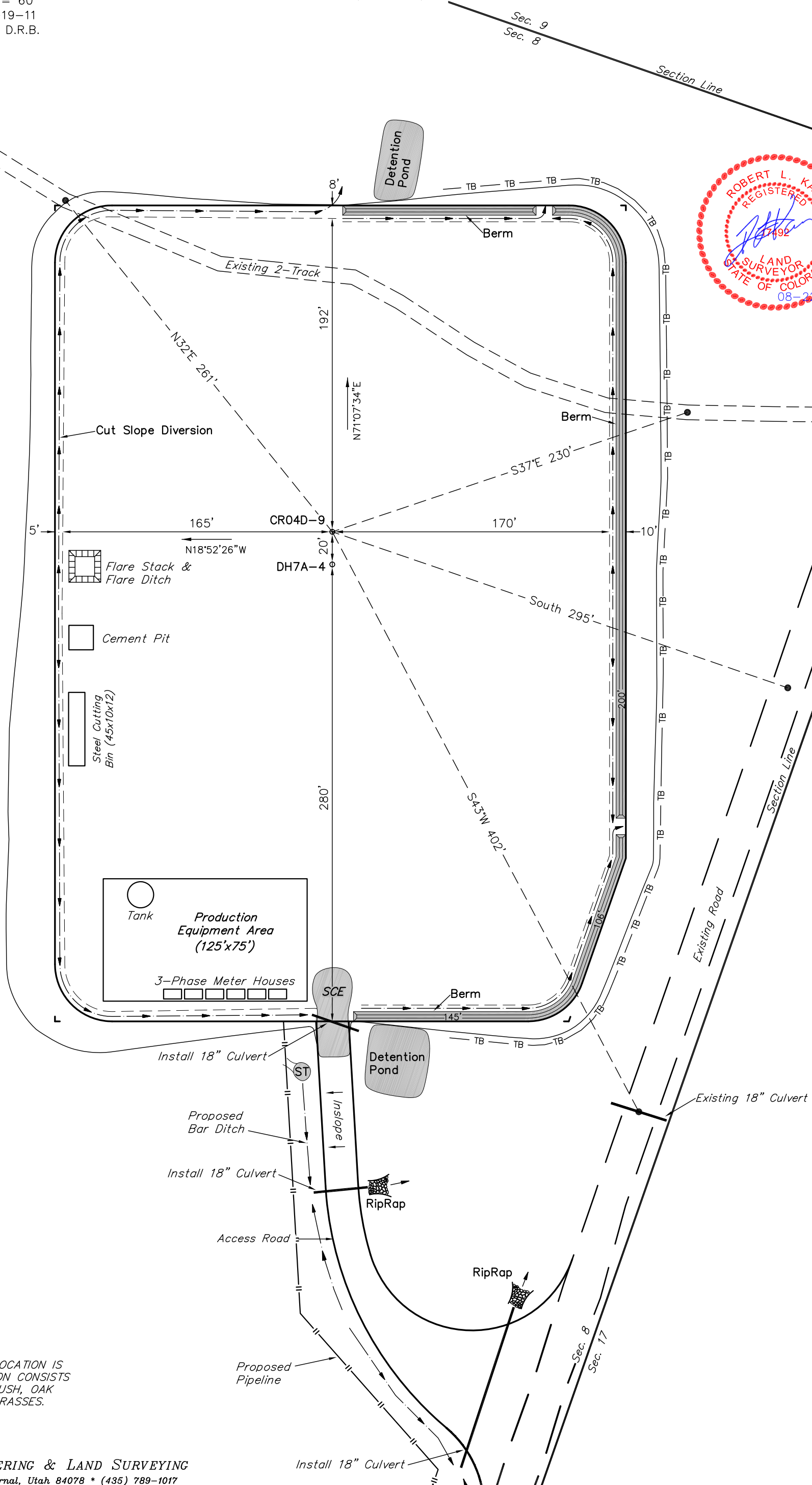
SE 1/4 SE 1/4

SCALE: 1" = 60'
DATE: 08-19-11
DRAWN BY: D.R.B.



SCALE

Sheet 1f of 11



SURFACE USE OF LOCATION IS GRAZING, VEGETATION CONSISTS MAINLY OF SAGEBRUSH, OAK BRUSH & NATIVE GRASSES.

Encana OIL & GAS (USA) INC.

WELL PAD INTERFERENCE PLAT

WELL PAD P08 798

SECTION 8, T7S, R98W, 6th P.M.

SE 1/4 SE 1/4

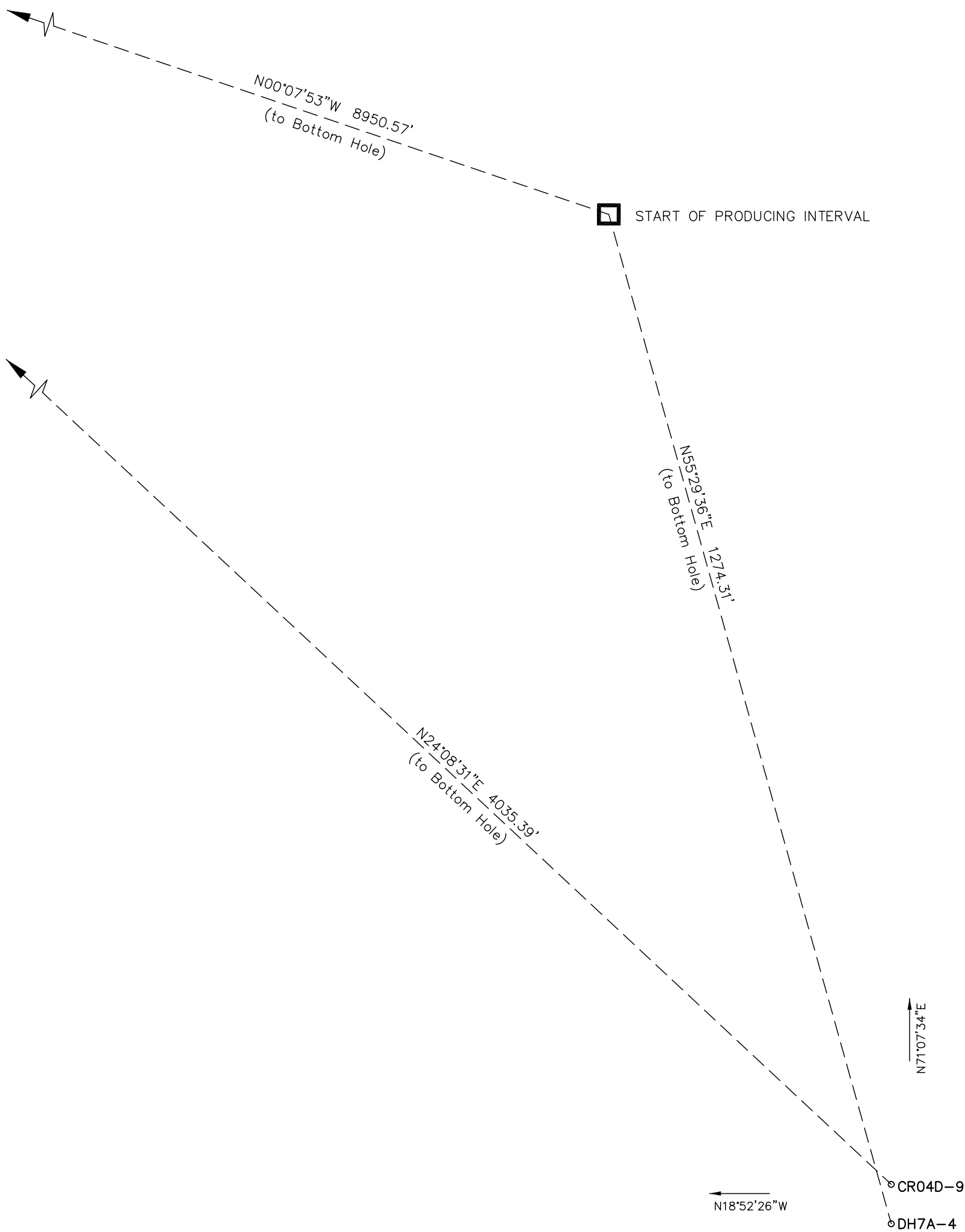
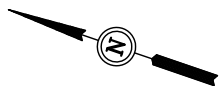
60' 30' 0' 60'



SCALE

Sheet 2 of 11

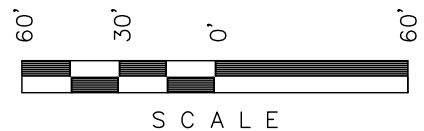
SCALE: 1" = 60'
DATE: 08-19-11
DRAWN BY: D.R.B.



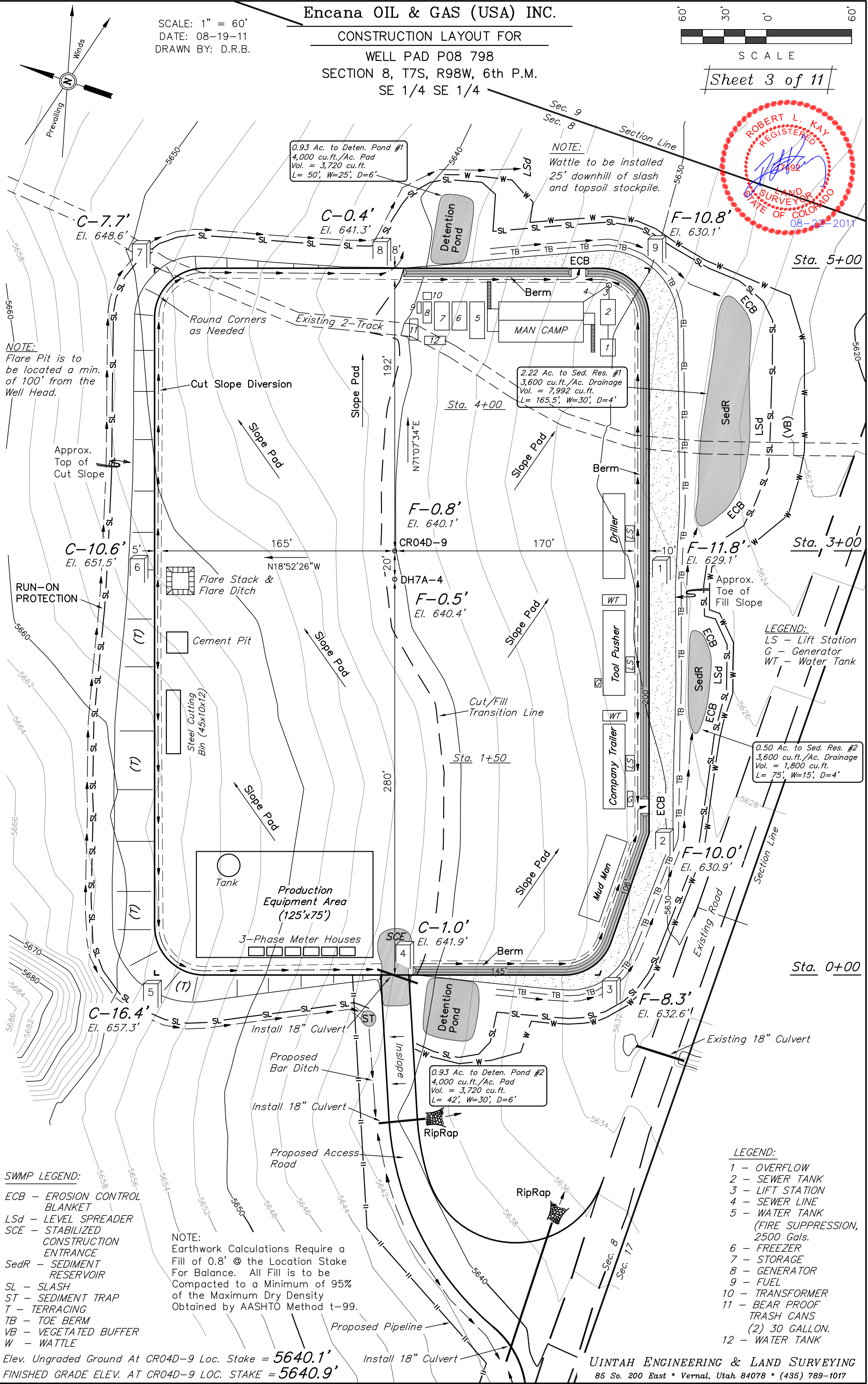
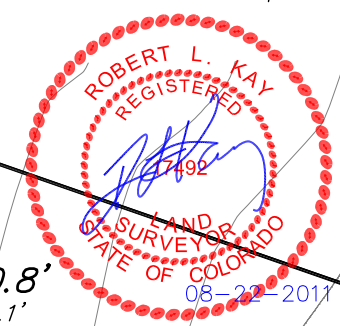
Encana OIL & GAS (USA) INC.

SCALE: 1" = 60'
 DATE: 08-19-11
 DRAWN BY: D.R.B.

CONSTRUCTION LAYOUT FOR
 WELL PAD P08 798
 SECTION 8, T7S, R98W, 6th P.M.
 SE 1/4 SE 1/4



Sheet 3 of 11



0.93 Ac. to Deten. Pond #1
 4,000 cu.ft./Ac. Pad
 Vol. = 3,720 cu.ft.
 L= 50', W=25', D=6'

NOTE:
 Wattle to be installed
 25' downhill of slash
 and topsoil stockpile.

2.22 Ac. to Sed. Res. #1
 3,600 cu.ft./Ac. Drainage
 Vol. = 7,992 cu.ft.
 L= 165.5', W=30', D=4'

0.50 Ac. to Sed. Res. #2
 3,600 cu.ft./Ac. Drainage
 Vol. = 1,800 cu.ft.
 L= 75', W=15', D=4'

NOTE:
 Flare Pit is to
 be located a min.
 of 100' from the
 Well Head.

LEGEND:
 LS - Lift Station
 G - Generator
 WT - Water Tank

SWMP LEGEND:
 ECB - EROSION CONTROL
 BLANKET
 Lsd - LEVEL SPREADER
 SCE - STABILIZED
 CONSTRUCTION
 ENTRANCE
 SedR - SEDIMENT
 RESERVOIR
 SL - SLASH
 ST - SEDIMENT TRAP
 T - TERRACING
 TB - TOE BERM
 VB - VEGETATED BUFFER
 W - WATTLE

NOTE:
 Earthwork Calculations Require a
 Fill of 0.8' @ the Location Stake
 For Balance. All Fill is to be
 Compacted to a Minimum of 95%
 of the Maximum Dry Density
 Obtained by AASHTO Method t-99.

LEGEND:
 1 - OVERFLOW
 2 - SEWER TANK
 3 - LIFT STATION
 4 - SEWER LINE
 5 - WATER TANK
 (FIRE SUPPRESSION,
 2500 Gals.
 6 - FREEZER
 7 - STORAGE
 8 - GENERATOR
 9 - FUEL
 10 - TRANSFORMER
 11 - BEAR PROOF
 TRASH CANS
 (2) 30 GALLON.
 12 - WATER TANK

Elev. Ungraded Ground At CR04D-9 Loc. Stake = 5640.1'
 FINISHED GRADE ELEV. AT CR04D-9 LOC. STAKE = 5640.9'

UINTAH ENGINEERING & LAND SURVEYING
 85 So. 200 East * Vernal, Utah 84078 * (435) 789-1017

Encana OIL & GAS (USA) INC.

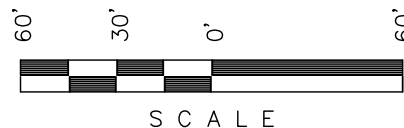
PRE-CONSTRUCTION LAYOUT FOR

WELL PAD P08 798

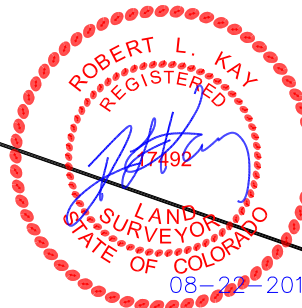
SECTION 8, T7S, R98W, 6th P.M.

SE 1/4 SE 1/4

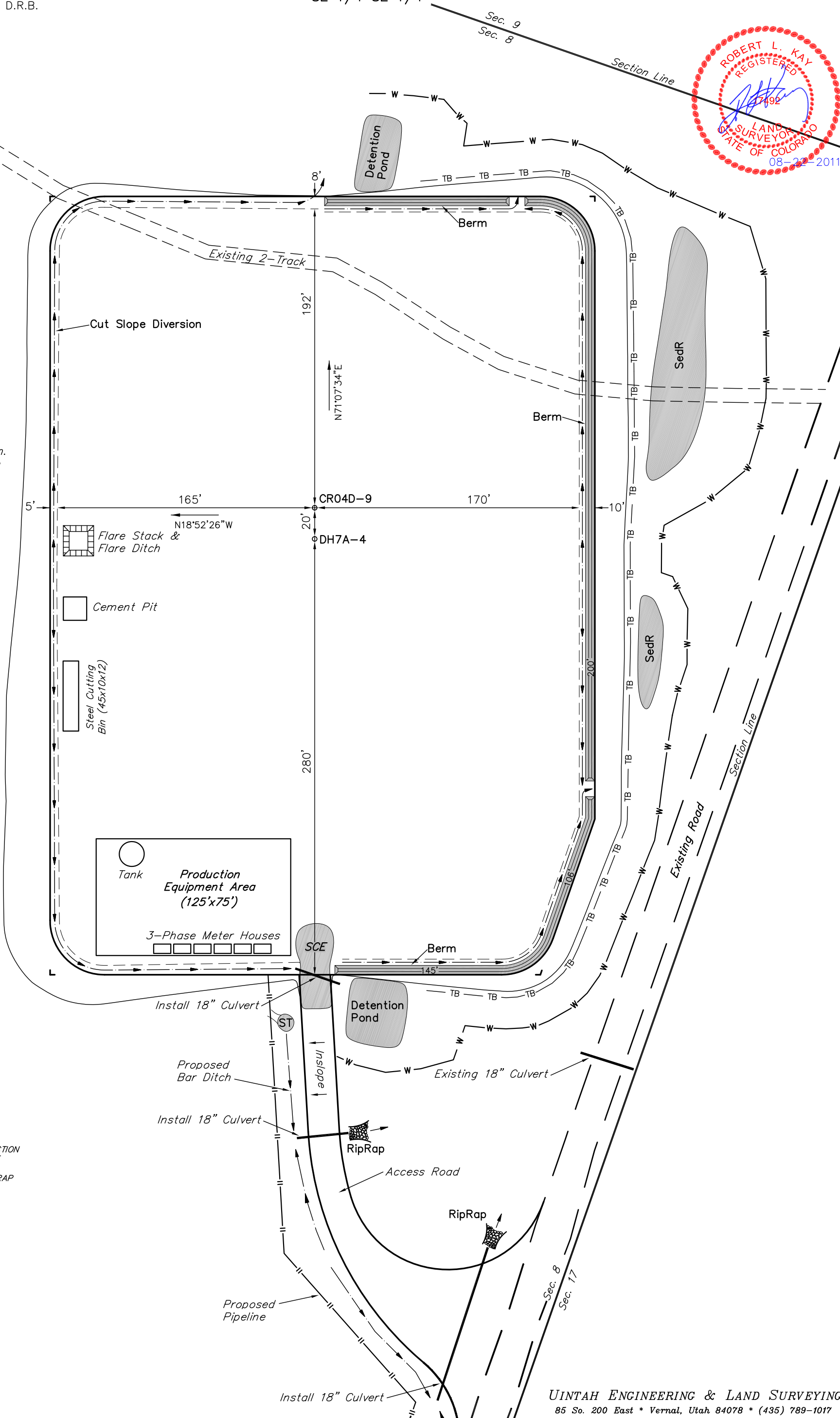
SCALE: 1" = 60'
DATE: 08-19-11
DRAWN BY: D.R.B.



Sheet 3a of 11



NOTE:
Flare Pit is to be located a min. of 100' from the Well Head.



SWMP LEGEND:
SCE - STABILIZED CONSTRUCTION ENTRANCE
W - WATTLE
ST - SEDIMENT TRAP

Encana OIL & GAS (USA) INC.
CONSTRUCTION LAYOUT CROSS SECTION FOR

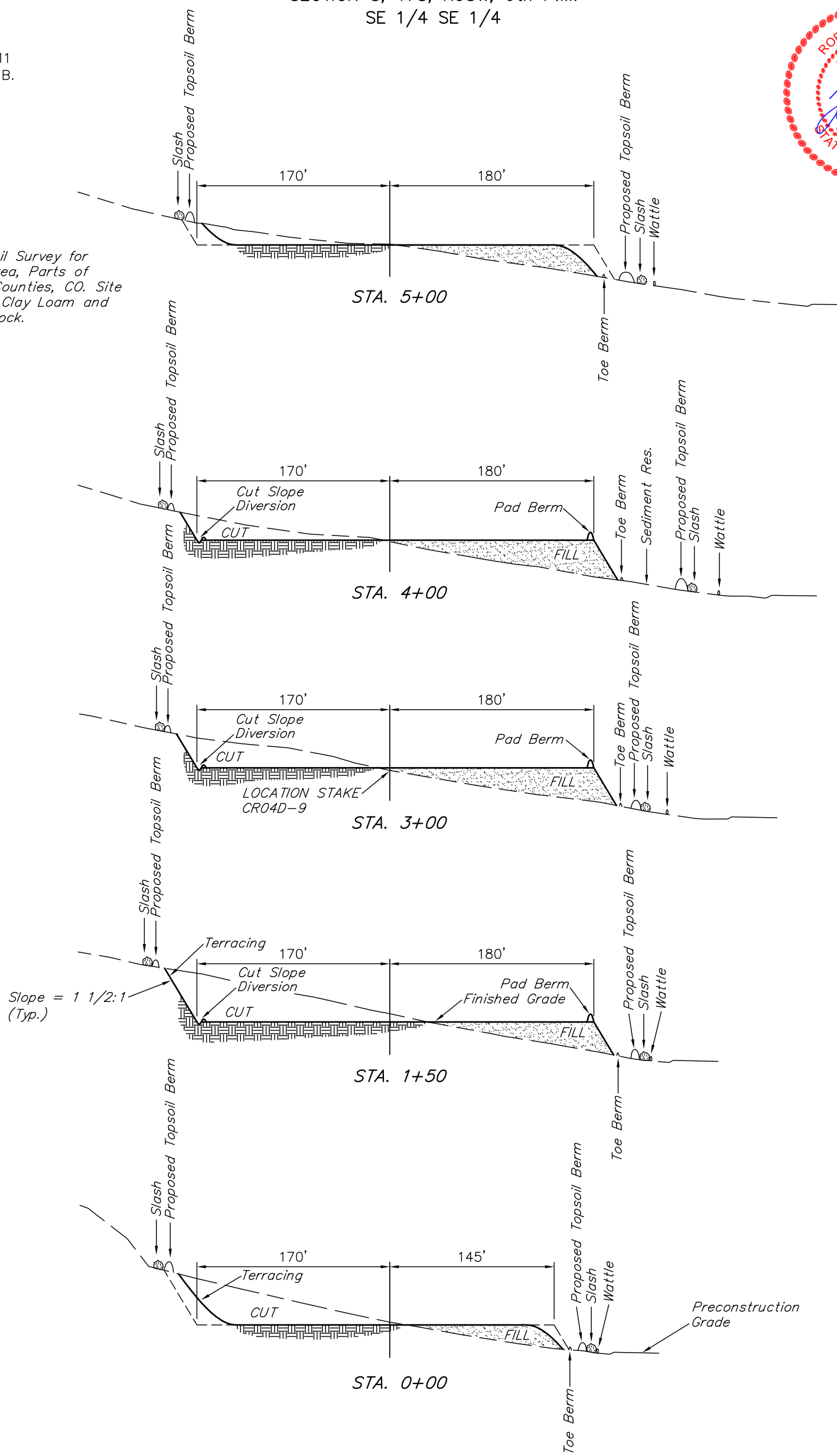
WELL PAD P08 798
 SECTION 8, T7S, R98W, 6th P.M.
 SE 1/4 SE 1/4

1" = 40'
 X-Section Scale
 1" = 100'

DATE: 08-19-11
 DRAWN BY: D.R.B.



NOTE:
 Per NRCS U.S. Soil Survey for Douglas Plateau Area, Parts of Garfield & Mesa Counties, CO. Site has Gravelly Silty Clay Loam and Unweathered Bedrock.



NOTE:
 Topsoil should not be Stripped Below Finished Grade on Substructure Area.

*** NOTE:**
 FILL QUANTITY INCLUDES 5% FOR COMPACTION

| APPROXIMATE YARDAGES | |
|------------------------|-------------------------|
| (6") Topsoil Stripping | = 3,760 Cu. Yds. |
| Remaining Location | = 23,020 Cu. Yds. |
| TOTAL CUT | = 26,780 CU.YDS. |
| FILL | = 23,020 CU.YDS. |

| | |
|---|------------------|
| EXCESS MATERIAL | = 3,760 Cu. Yds. |
| Topsoil | = 3,760 Cu. Yds. |
| EXCESS UNBALANCE (After Interim Rehabilitation) | = 0 Cu. Yds. |

Encana OIL & GAS (USA) INC.

TYPICAL RIG LAYOUT FOR

WELL PAD P08 798

SECTION 8, T7S, R98W, 6th P.M.

SE 1/4 SE 1/4

60' 30' 0' 60'

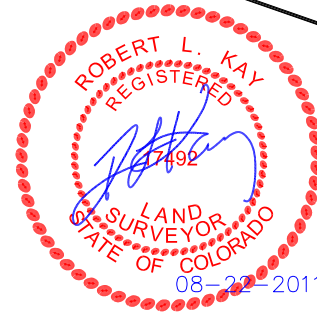


SCALE

Sheet 5 of 11

SCALE: 1" = 60'
DATE: 08-19-11
DRAWN BY: D.R.B.

Section Line

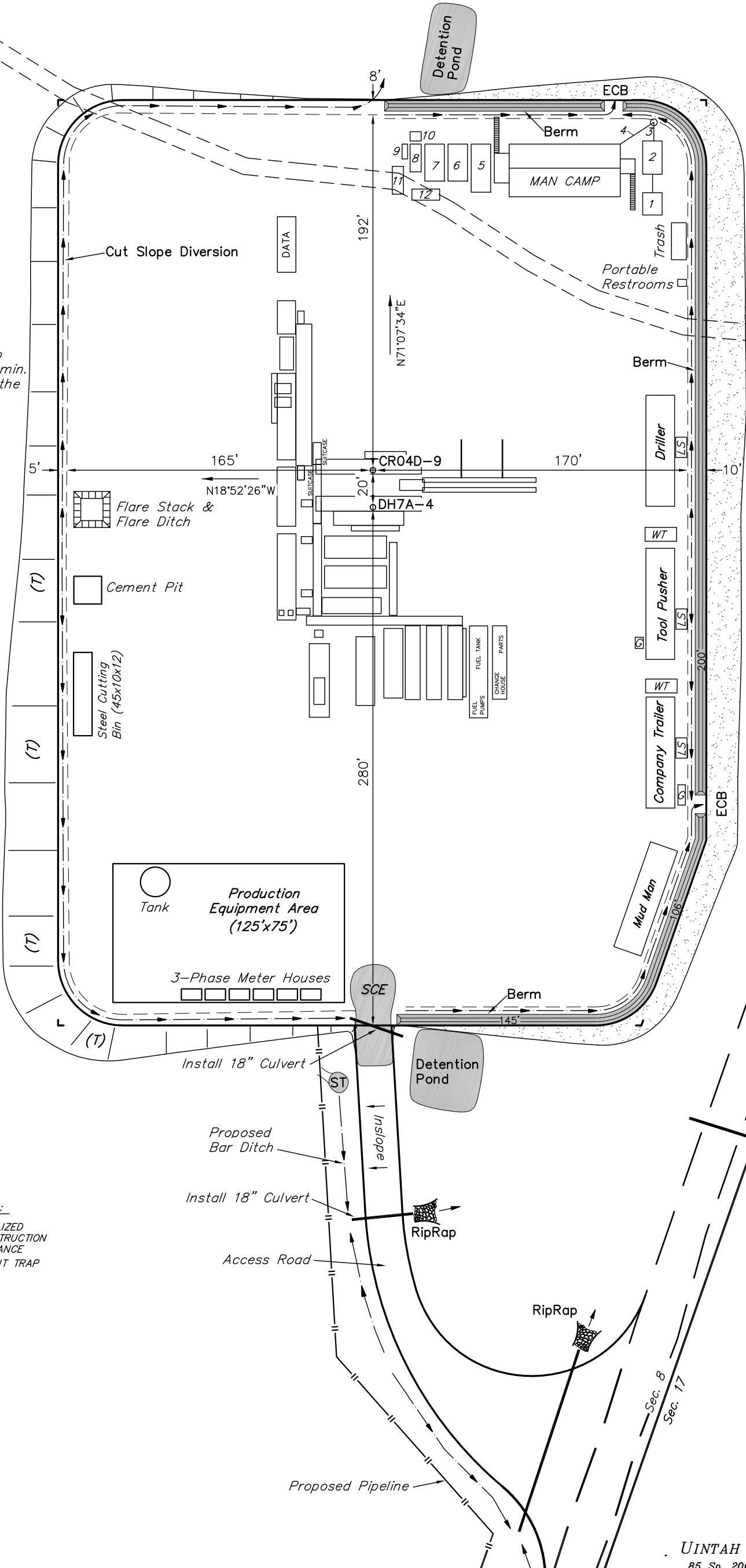


NOTE:
Flare Pit is to be located a min. of 100' from the Well Head.

LEGEND:
LS - Lift Station
G - Generator
WT - Water Tank

SWMP LEGEND:
SCE - STABILIZED CONSTRUCTION ENTRANCE
ST - SEDIMENT TRAP

LEGEND:
1 - OVERFLOW
2 - SEWER TANK
3 - LIFT STATION
4 - SEWER LINE
5 - WATER TANK (FIRE SUPPRESSION, 2500 Gals.)
6 - FREEZER
7 - STORAGE
8 - GENERATOR
9 - FUEL
10 - TRANSFORMER
11 - BEAR PROOF TRASH CANS (2) 30 GALLON.
12 - WATER TANK



Encana OIL & GAS (USA) INC.

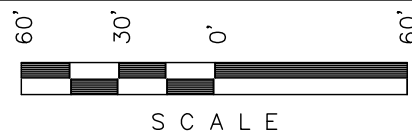
PRODUCTION SCHEMATIC FOR

WELL PAD P08 798

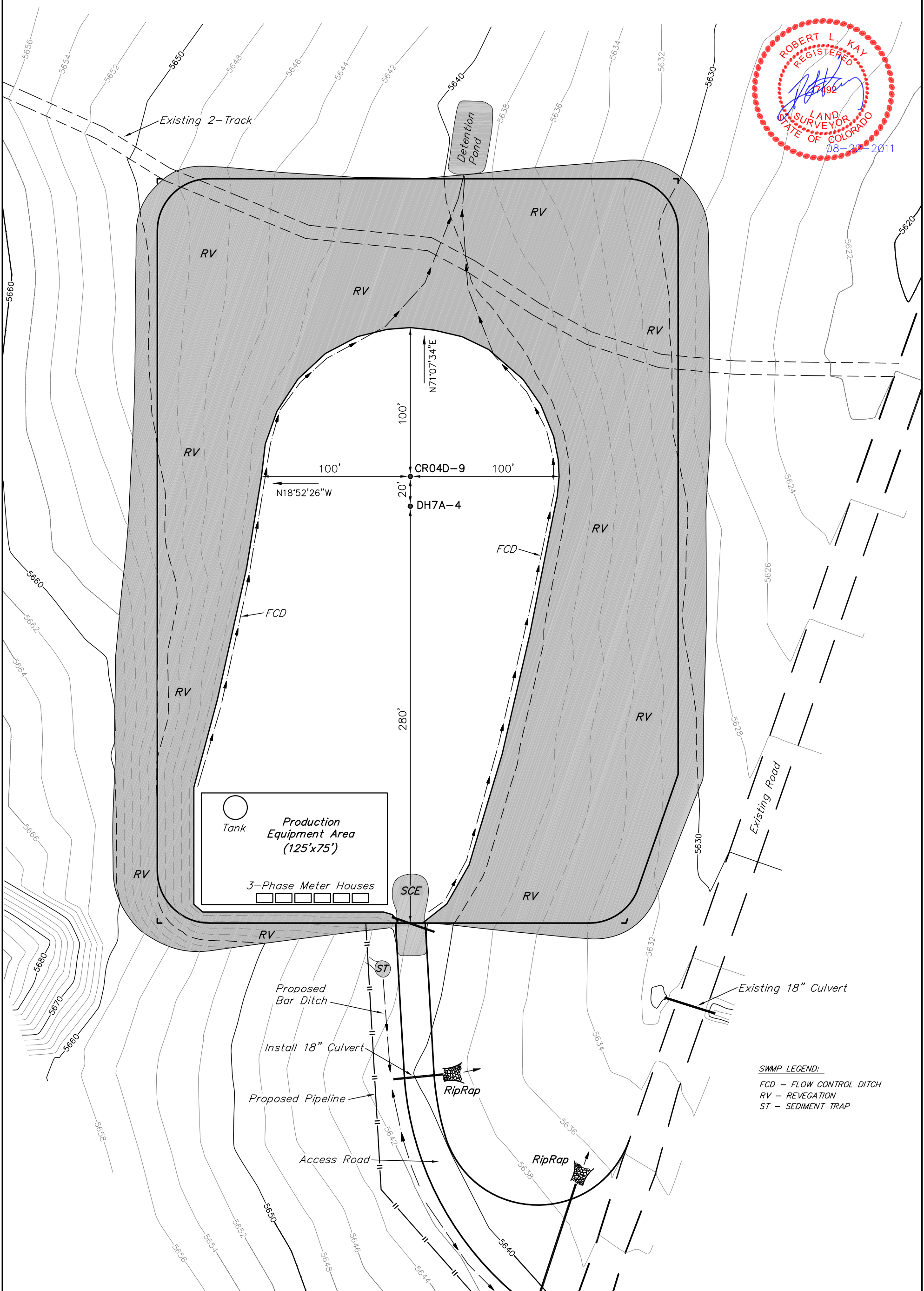
SECTION 8, T7S, R98W, 6th P.M.

SE 1/4 SE 1/4

SCALE: 1" = 60'
DATE: 08-19-11
DRAWN BY: D.R.B.



Sheet 6 of 11



Tank
Production Equipment Area (125'x75')
 3-Phase Meter Houses

SWMP LEGEND:
 FCD - FLOW CONTROL DITCH
 RV - REVEGATION
 ST - SEDIMENT TRAP

APPROXIMATE ACREAGES
 TOTAL RECLAIMED AREA = ± 2.865 ACRES
 UN-RECLAIMED AREA = ± 1.679 ACRES

UINTAH ENGINEERING & LAND SURVEYING
 85 So. 200 East * Vernal, Utah 84078 * (435) 789-1017

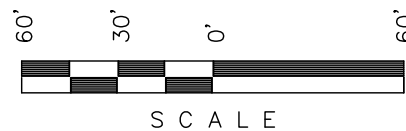
Encana OIL & GAS (USA) INC.

SURFACE DISTURBANCE AREA FOR

WELL PAD P08 798

SECTION 8, T7S, R98W, 6th P.M.

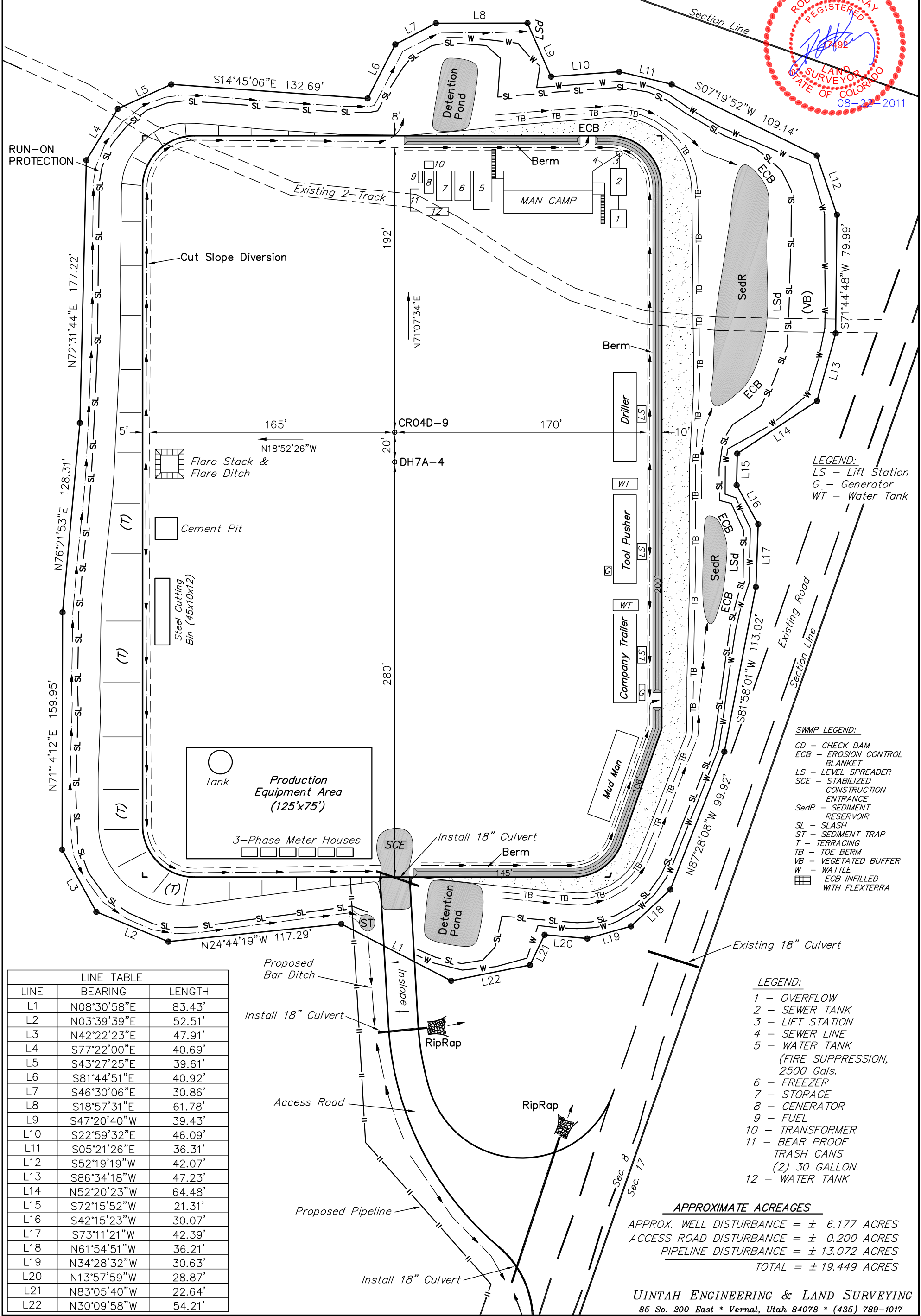
SE 1/4 SE 1/4



SCALE

Sheet 7 of 11

SCALE: 1" = 60'
DATE: 08-19-11
DRAWN BY: D.R.B.



LEGEND:
LS - Lift Station
G - Generator
WT - Water Tank

SWMP LEGEND:
CD - CHECK DAM
ECB - EROSION CONTROL BLANKET
LS - LEVEL SPREADER
SCE - STABILIZED CONSTRUCTION ENTRANCE
SedR - SEDIMENT RESERVOIR
SL - SLASH
ST - SEDIMENT TRAP
T - TERRACING
TB - TOE BERM
VB - VEGETATED BUFFER
W - WATTLE
ECB INFILLED WITH FLEXTERRA

LEGEND:
1 - OVERFLOW
2 - SEWER TANK
3 - LIFT STATION
4 - SEWER LINE
5 - WATER TANK (FIRE SUPPRESSION, 2500 Gals.)
6 - FREEZER
7 - STORAGE
8 - GENERATOR
9 - FUEL
10 - TRANSFORMER
11 - BEAR PROOF TRASH CANS (2) 30 GALLON.
12 - WATER TANK

| LINE | BEARING | LENGTH |
|------|-------------|--------|
| L1 | N08°30'58"E | 83.43' |
| L2 | N03°39'39"E | 52.51' |
| L3 | N42°22'23"E | 47.91' |
| L4 | S77°22'00"E | 40.69' |
| L5 | S43°27'25"E | 39.61' |
| L6 | S81°44'51"E | 40.92' |
| L7 | S46°30'06"E | 30.86' |
| L8 | S18°57'31"E | 61.78' |
| L9 | S47°20'40"W | 39.43' |
| L10 | S22°59'32"E | 46.09' |
| L11 | S05°21'26"E | 36.31' |
| L12 | S52°19'19"W | 42.07' |
| L13 | S86°34'18"W | 47.23' |
| L14 | N52°20'23"W | 64.48' |
| L15 | S72°15'52"W | 21.31' |
| L16 | S42°15'23"W | 30.07' |
| L17 | S73°11'21"W | 42.39' |
| L18 | N61°54'51"W | 36.21' |
| L19 | N34°28'32"W | 30.63' |
| L20 | N13°57'59"W | 28.87' |
| L21 | N83°05'40"W | 22.64' |
| L22 | N30°09'58"W | 54.21' |

APPROXIMATE ACREAGES
APPROX. WELL DISTURBANCE = ± 6.177 ACRES
ACCESS ROAD DISTURBANCE = ± 0.200 ACRES
PIPELINE DISTURBANCE = ± 13.072 ACRES
TOTAL = ± 19.449 ACRES