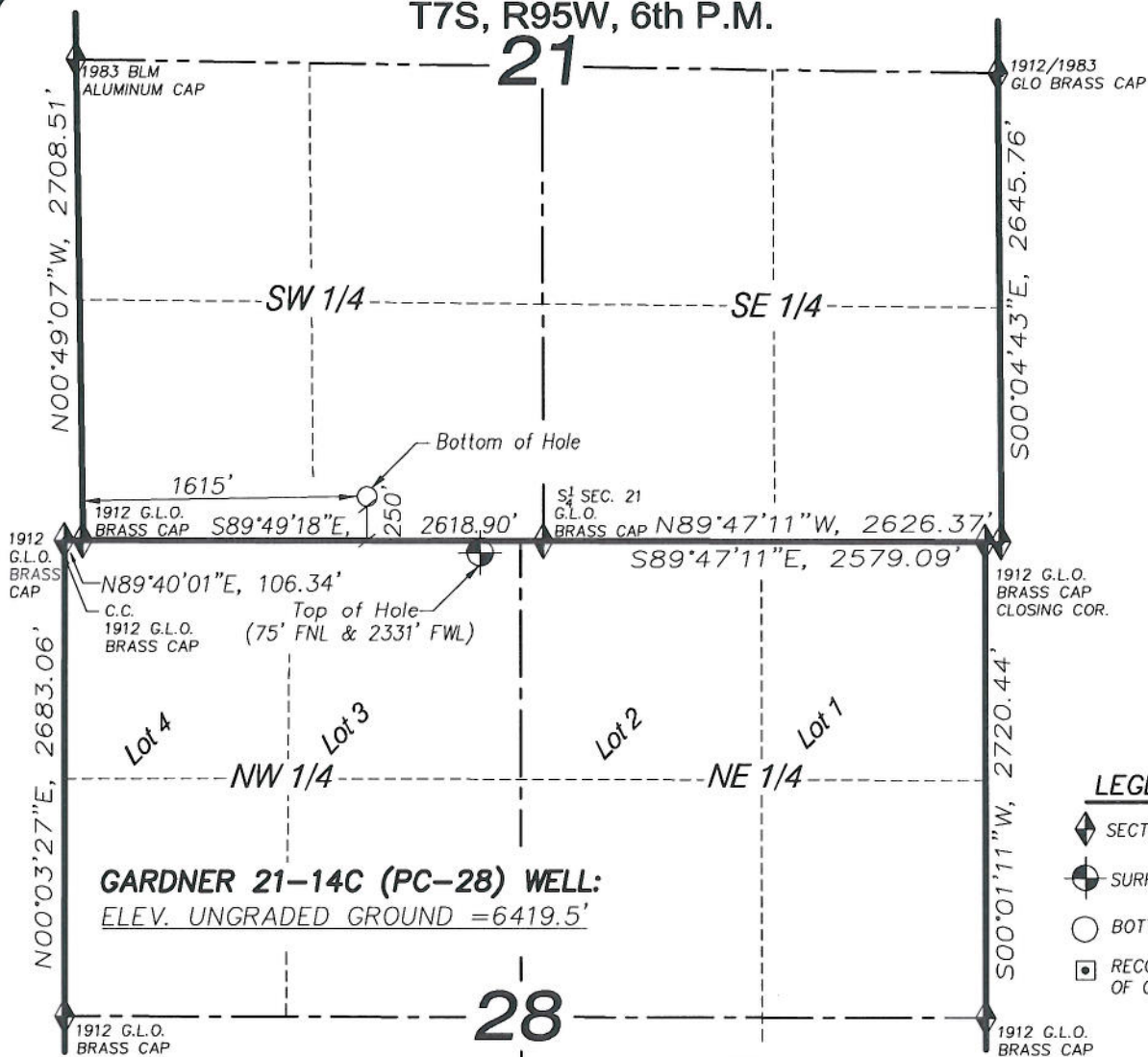


T7S, R95W, 6th P.M.

21



**GARDNER 21-14C (PC-28) WELL:**  
ELEV. UNGRADED GROUND = 6419.5'

**LEGEND**

- ◆ SECTION CORNER LOCATED
- SURFACE LOCATION
- BOTTOM HOLE LOCATION
- RECORD LOCATION OF CORNER

**NOTES**

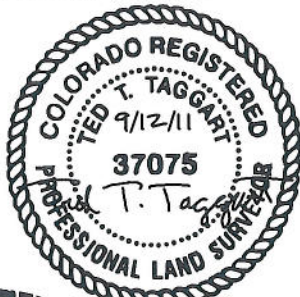
1. WELL FOOTAGES ARE MEASURED AT RIGHT ANGLES TO SECTION LINES.
2. BASIS OF BEARING: GEODETIC- BASED ON GPS OBSERVATIONS.
3. ELEVATIONS BASED ON GPS OBSERVATIONS, NAVD 88 (GEOID 03), POST PROCESSED USING NGS OPUS.
4. THE BOTTOM HOLE BEARS N61°53'44"W, 695' FROM TOP OF HOLE.
5. SEE ADDENDUM TO LEGAL PLAT (SHEET 1K) FOR VISIBLE IMPROVEMENTS WITHIN 400 FEET OF THE PROPOSED OIL & GAS LOCATION.
6. CONTROL FOR SURVEY WAS ESTABLISHED USING DIFFERENTIALLY CORRECTED GPS FROM AN OPUS BASED CONTROL NETWORK. WELL LOCATION WAS ESTABLISHED USING NON-GPS CONVENTIONAL METHODS, THEREFORE NO PDOP READING WAS TAKEN.

**GARDNER 21-14C (PC-28) WELL**

(WELLHEAD LOCATION) NAD 83  
LATITUDE = 39.415577° N  
LONGITUDE = 108.003376° W  
(BOTTOM HOLE LOCATION) NAD 83  
LATITUDE = 39.416470° N  
LONGITUDE = 108.005547° W

**CERTIFICATE OF SURVEYOR**

I, TED TAGGART OF FRUITA, COLORADO HEREBY CERTIFY THAT THIS MAP WAS MADE FROM NOTES TAKEN DURING AN ACTUAL SURVEY MADE BY ME OR UNDER MY DIRECTION FOR ENCANA OIL & GAS (USA) INC. AND THAT THIS LOCATION HAS BEEN STAKED ON THE GROUND AS SHOWN HEREON.



906 Main Street  
Evanston, Wyoming 82930  
Phone No. (307) 789-4545

**MAP to ACCOMPANY**  
**APPLICATION for PERMIT to DRILL**  
**EnCana Oil & Gas (USA) Inc.**  
**Gardner 21-14C (PC-28) Well**  
**NE1/4 NW1/4 (Lot 3), SECTION 28**  
**T7S, R95W, 6th P.M.**  
**GARFIELD COUNTY, COLORADO**

Location Plat		Scale: 1" = 1000'	SHEET
Project No.	10-04-63	Date Surveyed: 8/11/10	<b>1h</b> OF 10
Date Drawn: 11/09/10		Latest Revision Date: 9/12/11	