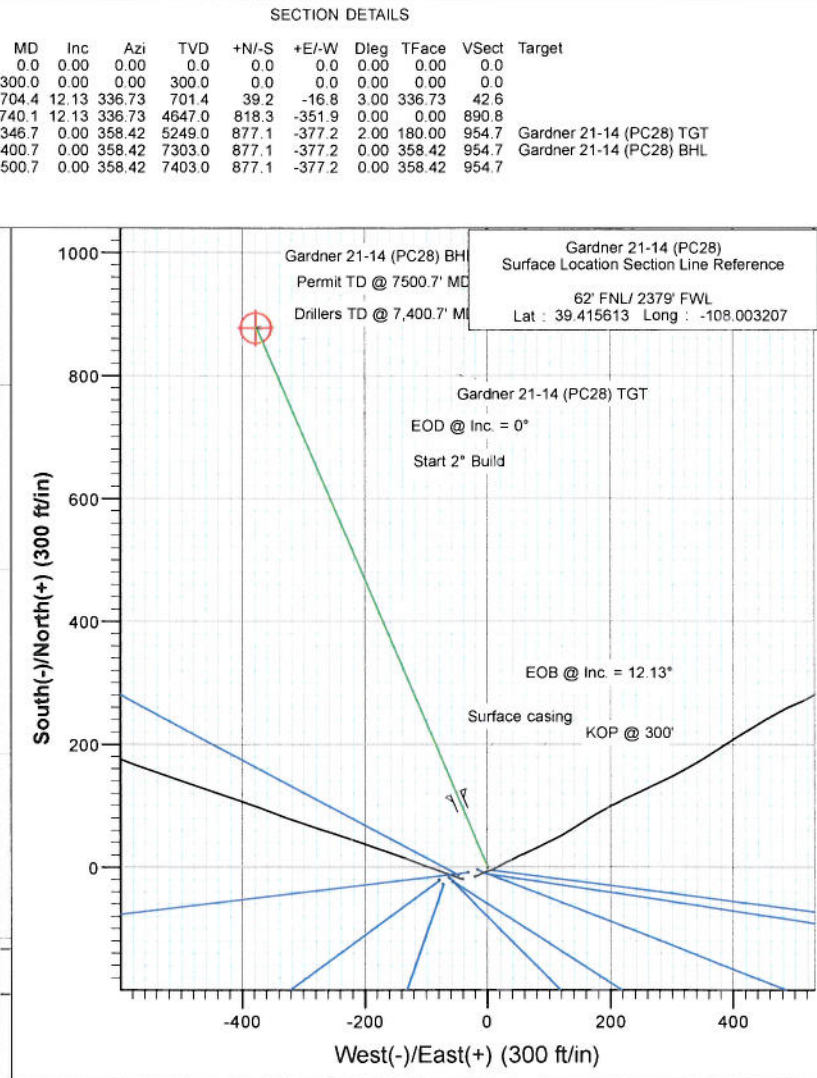
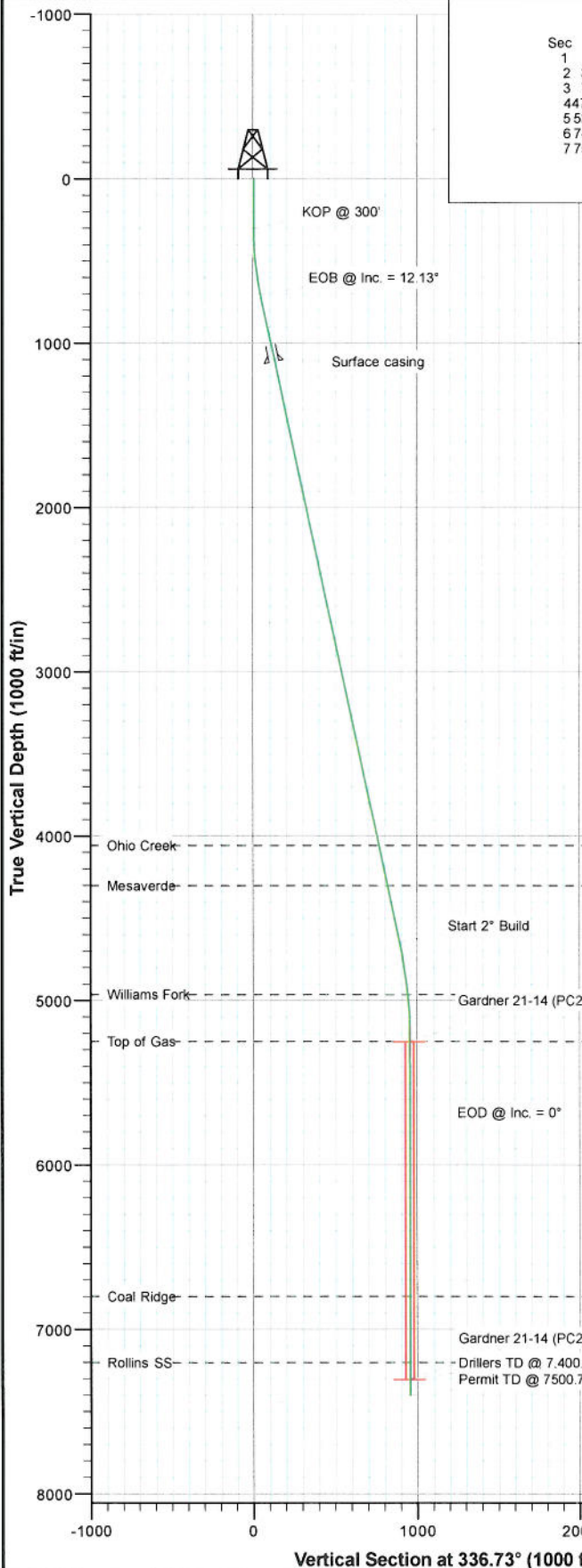




Project: S. Piceance (Parachute)
 Site: NENW Sec28-T7S-R95W (PC-28)
 Well: Gardner 21-14 (PC28)
 Wellbore: DD
 Plan: Plan #3

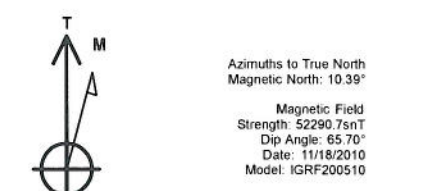


SECTION DETAILS

Sec	MD	Inc	Azi	TVD	+N/-S	+E/-W	Dleg	TFace	VSec	Target
1	0.0	0.00	0.00	0.0	0.0	0.0	0.00	0.00	0.0	
2	300.0	0.00	0.00	300.0	0.0	0.0	0.00	0.00	0.0	
3	704.4	12.13	336.73	701.4	39.2	-16.8	3.00	336.73	42.6	
4	44740.1	12.13	336.73	4647.0	818.3	-351.9	0.00	0.00	890.8	
5	55346.7	0.00	358.42	5249.0	877.1	-377.2	2.00	180.00	954.7	Gardner 21-14 (PC28) TGT
6	67400.7	0.00	358.42	7303.0	877.1	-377.2	0.00	358.42	954.7	Gardner 21-14 (PC28) BHL
7	7500.7	0.00	358.42	7403.0	877.1	-377.2	0.00	358.42	954.7	

FORMATION TOP DETAILS

TVDPath	MDPath	Formation
4058.0	4137.7	Ohio Creek
4302.0	4387.3	Mesaverde
4964.0	5061.2	Williams Fork
5249.0	5346.7	Top of Gas
6801.0	6898.7	Coal Ridge
7203.0	7300.7	Rollins SS



Plan #3						
Gardner 21-14 (PC28)						
115XXX; SC						
KBE @ 6442.0ft (Original Well Elev)						
North American Datum 1983						
Well Gardner 21-14 (PC28), True North						
Target		Azimuth	Origin Type	N/S		
Gardner 21-14 (PC28) BHL		336.73	Slot	0.0		
Name		TVD	+N/-S	+E/-W	Latitude	Longitude
Gardner 21-14 (PC28) TGT		5249.0	877.1	-377.2	39.418021	-108.004542
Gardner 21-14 (PC28) BHL		7303.0	877.1	-377.2	39.418021	-108.004542

Planning Report

Database:	USA EDM 5000 Multi Users DB	Local Co-ordinate Reference:	Well Gardner 21-14 (PC28)
Company:	EnCana Oil & Gas (USA) Inc	TVD Reference:	KBE @ 6442.0ft (Original Well Elev)
Project:	S. Piceance (Parachute)	MD Reference:	KBE @ 6442.0ft (Original Well Elev)
Site:	NENW Sec28-T7S-R95W (PC28)	North Reference:	True
Well:	Gardner 21-14 (PC28)	Survey Calculation Method:	Minimum Curvature
Wellbore:	DD		
Design:	Plan #3		

Project	S. Piceance (Parachute), Garfield County, CO		
Map System:	US State Plane 1983	System Datum:	Mean Sea Level
Geo Datum:	North American Datum 1983		
Map Zone:	Colorado Central Zone		

Site	NENW Sec28-T7S-R95W (PC28)				
Site Position:		Northing:	1,585,994.80 ft	Latitude:	39.415560
From:	Lat/Long	Easting:	2,292,840.18 ft	Longitude:	-108.003350
Position Uncertainty:	0.0 ft	Slot Radius:	13.200 in	Grid Convergence:	-1.58 °

Well	Gardner 21-14 (PC28)					
Well Position	+N/-S	0.0 ft	Northing:	1,586,012.97 ft	Latitude:	39.415613
	+E/-W	0.0 ft	Easting:	2,292,881.09 ft	Longitude:	-108.003207
Position Uncertainty		0.0 ft	Wellhead Elevation:	ft	Ground Level:	6,420.0 ft

Wellbore	DD
-----------------	----

Magnetics	Model Name	Sample Date	Declination (°)	Dip Angle (°)	Field Strength (nT)
	IGRF200510	11/18/2010	10.39	65.70	52,291

Design	Plan #3			
Audit Notes:				
Version:	Phase:	PLAN	Tie On Depth:	0.0
Vertical Section:	Depth From (TVD)	+N/-S	+E/-W	Direction
	(ft)	(ft)	(ft)	(°)
	0.0	0.0	0.0	336.73

Plan Sections										
Measured Depth (ft)	Inclination (°)	Azimuth (°)	Vertical Depth (ft)	+N/-S (ft)	+E/-W (ft)	Dogleg Rate (°/100ft)	Build Rate (°/100ft)	Turn Rate (°/100ft)	TFO (°)	Target
0.0	0.00	0.00	0.0	0.0	0.0	0.00	0.00	0.00	0.00	
300.0	0.00	0.00	300.0	0.0	0.0	0.00	0.00	0.00	0.00	
704.4	12.13	336.73	701.4	39.2	-16.8	3.00	3.00	0.00	336.73	
4,740.1	12.13	336.73	4,647.0	818.3	-351.9	0.00	0.00	0.00	0.00	
5,346.7	0.00	358.42	5,249.0	877.1	-377.2	2.00	-2.00	0.00	180.00	Gardner 21-14 (PC28)
7,400.7	0.00	358.42	7,303.0	877.1	-377.2	0.00	0.00	0.00	358.42	Gardner 21-14 (PC28)
7,500.7	0.00	358.42	7,403.0	877.1	-377.2	0.00	0.00	0.00	358.42	

Planning Report

Database:	USA EDM 5000 Multi Users DB	Local Co-ordinate Reference:	Well Gardner 21-14 (PC28)
Company:	EnCana Oil & Gas (USA) Inc	TVD Reference:	KBE @ 6442.0ft (Original Well Elev)
Project:	S. Piceance (Parachute)	MD Reference:	KBE @ 6442.0ft (Original Well Elev)
Site:	NENW Sec28-T7S-R95W (PC28)	North Reference:	True
Well:	Gardner 21-14 (PC28)	Survey Calculation Method:	Minimum Curvature
Wellbore:	DD		
Design:	Plan #3		

Planned Survey

Measured Depth (ft)	Inclination (°)	Azimuth (°)	Vertical Depth (ft)	+N/-S (ft)	+E/-W (ft)	Vertical Section (ft)	Dogleg Rate (°/100ft)	Build Rate (°/100ft)	Comments / Formations
0.0	0.00	0.00	0.0	0.0	0.0	0.0	0.00	0.00	
100.0	0.00	0.00	100.0	0.0	0.0	0.0	0.00	0.00	
200.0	0.00	0.00	200.0	0.0	0.0	0.0	0.00	0.00	
300.0	0.00	0.00	300.0	0.0	0.0	0.0	0.00	0.00	KOP @ 300'
400.0	3.00	336.73	400.0	2.4	-1.0	2.6	3.00	3.00	
500.0	6.00	336.73	499.6	9.6	-4.1	10.5	3.00	3.00	
600.0	9.00	336.73	598.8	21.6	-9.3	23.5	3.00	3.00	
704.4	12.13	336.73	701.4	39.2	-16.8	42.6	3.00	3.00	EOB @ Inc. = 12.13°
800.0	12.13	336.73	794.9	57.6	-24.8	62.7	0.00	0.00	
900.0	12.13	336.73	892.6	76.9	-33.1	83.8	0.00	0.00	
1,000.0	12.13	336.73	990.4	96.3	-41.4	104.8	0.00	0.00	
1,100.0	12.13	336.73	1,088.2	115.6	-49.7	125.8	0.00	0.00	
1,125.0	12.13	336.73	1,112.6	120.4	-51.8	131.0	0.00	0.00	Surface casing
1,200.0	12.13	336.73	1,185.9	134.9	-58.0	146.8	0.00	0.00	
1,300.0	12.13	336.73	1,283.7	154.2	-66.3	167.8	0.00	0.00	
1,400.0	12.13	336.73	1,381.5	173.5	-74.6	188.8	0.00	0.00	
1,500.0	12.13	336.73	1,479.2	192.8	-82.9	209.9	0.00	0.00	
1,600.0	12.13	336.73	1,577.0	212.1	-91.2	230.9	0.00	0.00	
1,700.0	12.13	336.73	1,674.8	231.4	-99.5	251.9	0.00	0.00	
1,800.0	12.13	336.73	1,772.5	250.7	-107.8	272.9	0.00	0.00	
1,900.0	12.13	336.73	1,870.3	270.0	-116.1	293.9	0.00	0.00	
2,000.0	12.13	336.73	1,968.1	289.3	-124.4	314.9	0.00	0.00	
2,100.0	12.13	336.73	2,065.8	308.6	-132.7	335.9	0.00	0.00	
2,200.0	12.13	336.73	2,163.6	327.9	-141.0	357.0	0.00	0.00	
2,300.0	12.13	336.73	2,261.4	347.2	-149.3	378.0	0.00	0.00	
2,400.0	12.13	336.73	2,359.1	366.5	-157.6	399.0	0.00	0.00	
2,500.0	12.13	336.73	2,456.9	385.8	-165.9	420.0	0.00	0.00	
2,600.0	12.13	336.73	2,554.7	405.1	-174.2	441.0	0.00	0.00	
2,700.0	12.13	336.73	2,652.4	424.5	-182.5	462.0	0.00	0.00	
2,800.0	12.13	336.73	2,750.2	443.8	-190.8	483.0	0.00	0.00	
2,900.0	12.13	336.73	2,848.0	463.1	-199.1	504.1	0.00	0.00	
3,000.0	12.13	336.73	2,945.7	482.4	-207.4	525.1	0.00	0.00	
3,100.0	12.13	336.73	3,043.5	501.7	-215.7	546.1	0.00	0.00	
3,200.0	12.13	336.73	3,141.3	521.0	-224.0	567.1	0.00	0.00	
3,300.0	12.13	336.73	3,239.0	540.3	-232.3	588.1	0.00	0.00	
3,400.0	12.13	336.73	3,336.8	559.6	-240.6	609.1	0.00	0.00	
3,500.0	12.13	336.73	3,434.6	578.9	-248.9	630.2	0.00	0.00	
3,600.0	12.13	336.73	3,532.3	598.2	-257.2	651.2	0.00	0.00	
3,700.0	12.13	336.73	3,630.1	617.5	-265.5	672.2	0.00	0.00	
3,800.0	12.13	336.73	3,727.9	636.8	-273.8	693.2	0.00	0.00	
3,900.0	12.13	336.73	3,825.6	656.1	-282.1	714.2	0.00	0.00	
4,000.0	12.13	336.73	3,923.4	675.4	-290.4	735.2	0.00	0.00	
4,100.0	12.13	336.73	4,021.2	694.7	-298.7	756.2	0.00	0.00	
4,137.7	12.13	336.73	4,058.0	702.0	-301.9	764.2	0.00	0.00	Ohio Creek
4,200.0	12.13	336.73	4,118.9	714.0	-307.0	777.3	0.00	0.00	
4,300.0	12.13	336.73	4,216.7	733.3	-315.3	798.3	0.00	0.00	
4,387.3	12.13	336.73	4,302.0	750.2	-322.6	816.6	0.00	0.00	Mesaverde
4,400.0	12.13	336.73	4,314.5	752.7	-323.6	819.3	0.00	0.00	
4,500.0	12.13	336.73	4,412.2	772.0	-332.0	840.3	0.00	0.00	
4,600.0	12.13	336.73	4,510.0	791.3	-340.3	861.3	0.00	0.00	
4,700.0	12.13	336.73	4,607.8	810.6	-348.6	882.3	0.00	0.00	
4,740.1	12.13	336.73	4,647.0	818.3	-351.9	890.8	0.00	0.00	Start 2" Build

Planning Report

Database:	USA EDM 5000 Multi Users DB	Local Co-ordinate Reference:	Well Gardner 21-14 (PC28)
Company:	EnCana Oil & Gas (USA) Inc	TVD Reference:	KBE @ 6442.0ft (Original Well Elev)
Project:	S. Piceance (Parachute)	MD Reference:	KBE @ 6442.0ft (Original Well Elev)
Site:	NENW Sec28-T7S-R95W (PC28)	North Reference:	True
Well:	Gardner 21-14 (PC28)	Survey Calculation Method:	Minimum Curvature
Wellbore:	DD		
Design:	Plan #3		

Planned Survey

Measured Depth (ft)	Inclination (°)	Azimuth (°)	Vertical Depth (ft)	+N/-S (ft)	+E/-W (ft)	Vertical Section (ft)	Dogleg Rate (°/100ft)	Build Rate (°/100ft)	Comments / Formations
4,800.0	10.93	336.73	4,705.7	829.3	-356.6	902.7	2.00	-2.00	
4,900.0	8.93	336.73	4,804.1	845.2	-363.4	920.0	2.00	-2.00	
5,000.0	6.93	336.73	4,903.2	857.8	-368.9	933.8	2.00	-2.00	
5,061.2	5.71	336.73	4,964.0	864.0	-371.5	940.5	2.00	-2.00	Williams Fork
5,100.0	4.93	336.73	5,002.6	867.3	-373.0	944.1	2.00	-2.00	
5,200.0	2.93	336.73	5,102.4	873.6	-375.7	951.0	2.00	-2.00	
5,300.0	0.93	336.73	5,202.3	876.7	-377.0	954.4	2.00	-2.00	
5,346.7	0.00	358.42	5,249.0	877.1	-377.2	954.7	2.00	-2.00	EOD @ Inc. = 0° - Top of Gas
5,400.0	0.00	358.42	5,302.3	877.1	-377.2	954.7	0.00	0.00	
5,500.0	0.00	358.42	5,402.3	877.1	-377.2	954.7	0.00	0.00	
5,600.0	0.00	358.42	5,502.3	877.1	-377.2	954.7	0.00	0.00	
5,700.0	0.00	358.42	5,602.3	877.1	-377.2	954.7	0.00	0.00	
5,800.0	0.00	358.42	5,702.3	877.1	-377.2	954.7	0.00	0.00	
5,900.0	0.00	358.42	5,802.3	877.1	-377.2	954.7	0.00	0.00	
6,000.0	0.00	358.42	5,902.3	877.1	-377.2	954.7	0.00	0.00	
6,100.0	0.00	358.42	6,002.3	877.1	-377.2	954.7	0.00	0.00	
6,200.0	0.00	358.42	6,102.3	877.1	-377.2	954.7	0.00	0.00	
6,300.0	0.00	358.42	6,202.3	877.1	-377.2	954.7	0.00	0.00	
6,400.0	0.00	358.42	6,302.3	877.1	-377.2	954.7	0.00	0.00	
6,500.0	0.00	358.42	6,402.3	877.1	-377.2	954.7	0.00	0.00	
6,600.0	0.00	358.42	6,502.3	877.1	-377.2	954.7	0.00	0.00	
6,700.0	0.00	358.42	6,602.3	877.1	-377.2	954.7	0.00	0.00	
6,800.0	0.00	358.42	6,702.3	877.1	-377.2	954.7	0.00	0.00	
6,898.7	0.00	358.42	6,801.0	877.1	-377.2	954.7	0.00	0.00	Coal Ridge
6,900.0	0.00	358.42	6,802.3	877.1	-377.2	954.7	0.00	0.00	
7,000.0	0.00	358.42	6,902.3	877.1	-377.2	954.7	0.00	0.00	
7,100.0	0.00	358.42	7,002.3	877.1	-377.2	954.7	0.00	0.00	
7,200.0	0.00	358.42	7,102.3	877.1	-377.2	954.7	0.00	0.00	
7,300.0	0.00	358.42	7,202.3	877.1	-377.2	954.7	0.00	0.00	
7,300.7	0.00	358.42	7,203.0	877.1	-377.2	954.7	0.00	0.00	Rollins SS
7,400.7	0.00	358.42	7,303.0	877.1	-377.2	954.7	0.00	0.00	Drillers TD @ 7,400.7' MD
7,500.7	0.00	358.42	7,403.0	877.1	-377.2	954.7	0.00	0.00	Permit TD @ 7500.7' MD

Targets

Target Name	Dip Angle (°)	Dip Dir. (°)	TVD (ft)	+N/-S (ft)	+E/-W (ft)	Northing (ft)	Easting (ft)	Latitude	Longitude
- hit/miss target									
- Shape									
Gardner 21-14 (PC28) T - plan hits target center - Circle (radius 25.0)	0.00	358.42	5,249.0	877.1	-377.2	1,586,900.11	2,292,528.25	39.418021	-108.004542
Gardner 21-14 (PC28) B - plan hits target center - Circle (radius 25.0)	0.00	358.42	7,303.0	877.1	-377.2	1,586,900.11	2,292,528.25	39.418021	-108.004542

Planning Report

Database:	USA EDM 5000 Multi Users DB	Local Co-ordinate Reference:	Well Gardner 21-14 (PC28)
Company:	EnCana Oil & Gas (USA) Inc	TVD Reference:	KBE @ 6442.0ft (Original Well Elev)
Project:	S. Piceance (Parachute)	MD Reference:	KBE @ 6442.0ft (Original Well Elev)
Site:	NENW Sec28-T7S-R95W (PC28)	North Reference:	True
Well:	Gardner 21-14 (PC28)	Survey Calculation Method:	Minimum Curvature
Wellbore:	DD		
Design:	Plan #3		

Casing Points

Measured Depth (ft)	Vertical Depth (ft)	Name	Casing Diameter (in)	Hole Diameter (in)
1,125.0	1,112.6	Surface casing	8.625	12.250

Formations

Measured Depth (ft)	Vertical Depth (ft)	Name	Lithology	Dip (°)	Dip Direction (°)
4,137.7	4,058.0	Ohio Creek		0.00	
4,387.3	4,302.0	Mesaverde		0.00	
5,061.2	4,964.0	Williams Fork		0.00	
5,346.7	5,249.0	Top of Gas		0.00	
6,898.7	6,801.0	Coal Ridge		0.00	
7,300.7	7,203.0	Rollins SS		0.00	

Plan Annotations

Measured Depth (ft)	Vertical Depth (ft)	Local Coordinates		Comment
		+N/-S (ft)	+E/-W (ft)	
300.0	300.0	0.0	0.0	KOP @ 300'
704.4	701.4	39.2	-16.8	EOB @ Inc. = 12.13°
4,740.1	4,647.0	818.3	-351.9	Start 2" Build
5,346.7	5,249.0	877.1	-377.2	EOD @ Inc. = 0°
7,400.7	7,303.0	877.1	-377.2	Drillers TD @ 7,400.7' MD
7,500.7	7,403.0	877.1	-377.2	Permit TD @ 7500.7' MD