

# ENSIGN

## Directional

### Well Name: SRC Aims 43-10D

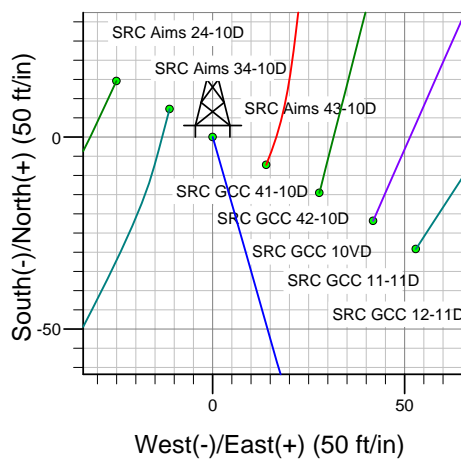
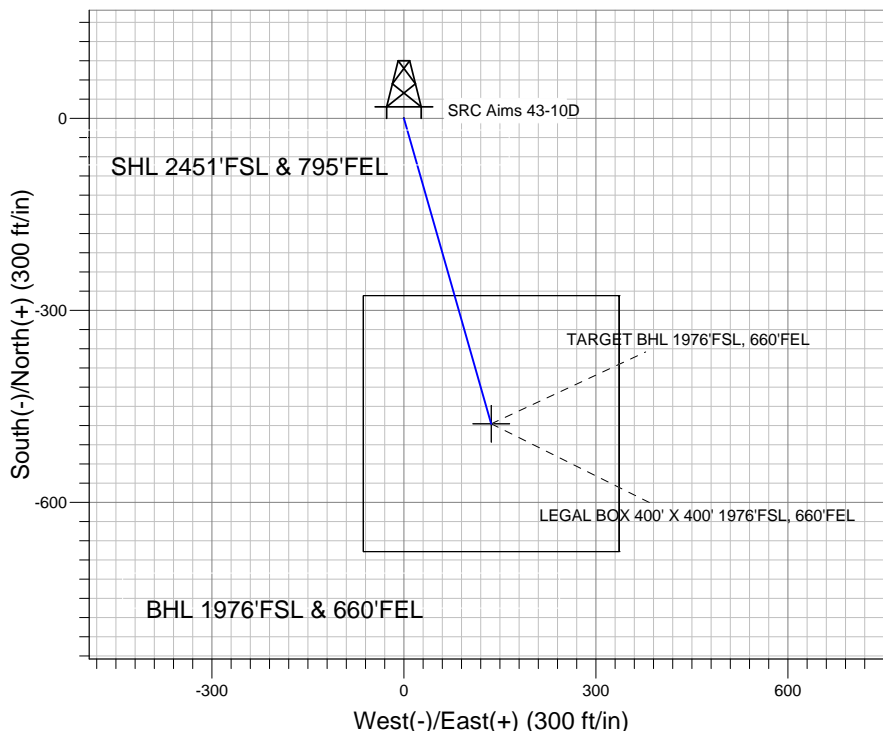
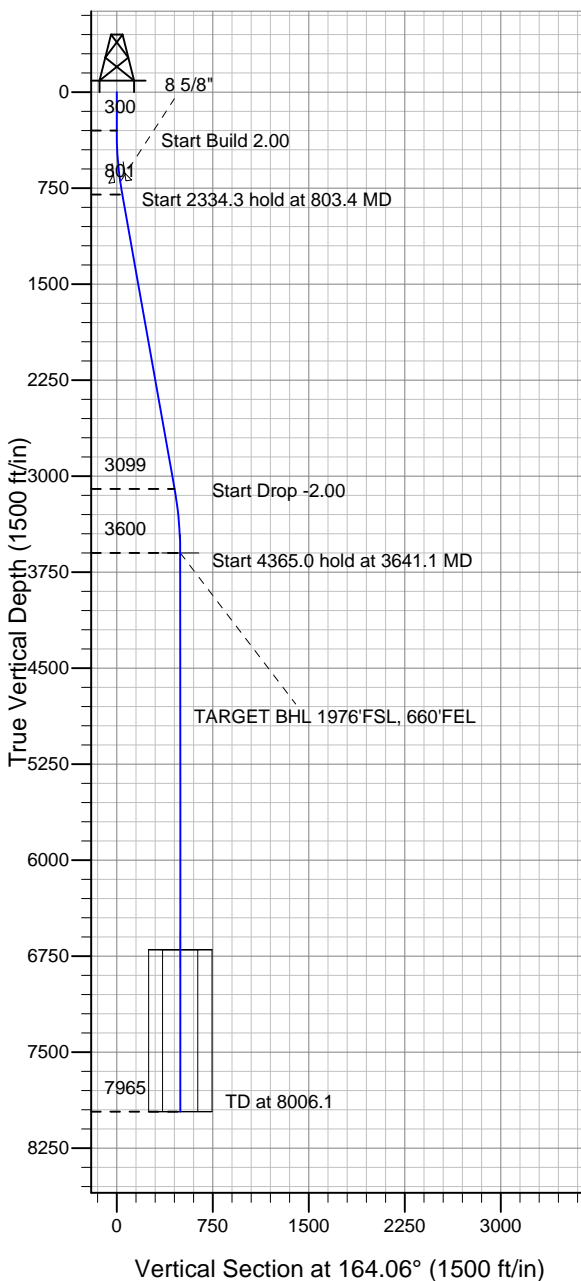
Surface Location: SRC Aims/GCC Pad Sec.10-T5N-R66W  
 North American Datum 1983 US State Plane 1983 Wyoming Western Zone

Ground Elevation: 4858.0

+N/-S	+E/-W	Northing	Easting	Latitude	Longitude	Slot
0.0	0.0	341351.51	4107517.01	40.413620	-104.759149	

Original Well Elev WELL @ 4871.0ft (Original Well Elev)

### Synergy Resources



SRC Aims/GCC Pad Sec.10-T5N-R66W  
 SRC Aims 43-10D  
 Plan #2 (9-21-11)  
 13:16, October 05 2011



Azimuths to True North  
 Magnetic North: 8.82°

Magnetic Field  
 Strength: 53106.6snT  
 Dip Angle: 67.05°  
 Date: 10/5/2011  
 Model: IGRF2010

### WELLBORE TARGET DETAILS (LAT/LONG)

Name	TVD	+N/-S	+E/-W	Latitude	Longitude	Shape
TARGET BHL 1976'FSL, 660'FEL	3600.0	-477.2	136.3	40.412310	-104.758660	Point
LEGAL BOX 400' X 400' 1976'FSL, 660'FEL	6700.0	-477.2	136.3	40.412310	-104.758660	Rectangle (Sides: L400.0 W400.0)

### SECTION DETAILS

Sec	MD	Inc	Azi	TVD	+N/-S	+E/-W	DLeg	TFace	VSec	Target
1	0.0	0.00	0.00	0.0	0.0	0.0	0.00	0.00	0.0	
2	300.0	0.00	0.00	300.0	0.0	0.0	0.00	0.00	0.0	
3	803.4	10.07	164.06	800.8	-42.4	12.1	2.00	164.06	44.1	
4	3137.7	10.07	164.06	3099.2	-434.8	124.2	0.00	0.00	452.2	
5	3641.1	0.00	0.00	3600.0	-477.2	136.3	2.00	180.00	496.3	TARGET BHL 1976'FSL, 660'FEL
6	8006.1	0.00	0.00	7965.0	-477.2	136.3	0.00	0.00	496.3	



## **Directional**

### **Synergy Resources**

**SEC.10-T5N-R66W**

**SRC Aims/GCC Pad Sec.10-T5N-R66W**

**SRC Aims 43-10D**

**Wellbore #1**

**Plan: Plan #2 (9-21-11)**

### **Standard Planning Report**

**05 October, 2011**

Plan Sections										
Measured Depth (ft)	Inclination (°)	Azimuth (°)	Vertical Depth (ft)	+N/-S (ft)	+E/-W (ft)	Dogleg Rate (°/100ft)	Build Rate (°/100ft)	Turn Rate (°/100ft)	TFO (°)	Target
0.0	0.00	0.00	0.0	0.0	0.0	0.00	0.00	0.00	0.00	
300.0	0.00	0.00	300.0	0.0	0.0	0.00	0.00	0.00	0.00	
803.4	10.07	164.06	800.8	-42.4	12.1	2.00	2.00	0.00	164.06	
3,137.7	10.07	164.06	3,099.2	-434.8	124.2	0.00	0.00	0.00	0.00	
3,641.1	0.00	0.00	3,600.0	-477.2	136.3	2.00	-2.00	0.00	180.00	TARGET BHL 1976
8,006.1	0.00	0.00	7,965.0	-477.2	136.3	0.00	0.00	0.00	0.00	

<b>Database:</b>	Landmark	<b>Local Co-ordinate Reference:</b>	Well SRC Aims 43-10D
<b>Company:</b>	Synergy Resources	<b>TVD Reference:</b>	WELL @ 4871.0ft (Original Well Elev)
<b>Project:</b>	SEC.10-T5N-R66W	<b>MD Reference:</b>	WELL @ 4871.0ft (Original Well Elev)
<b>Site:</b>	SRC Aims/GCC Pad Sec.10-T5N-R66W	<b>North Reference:</b>	True
<b>Well:</b>	SRC Aims 43-10D	<b>Survey Calculation Method:</b>	Minimum Curvature
<b>Wellbore:</b>	Wellbore #1		
<b>Design:</b>	Plan #2 (9-21-11)		

Planned Survey									
Measured Depth (ft)	Inclination (°)	Azimuth (°)	Vertical Depth (ft)	+N/-S (ft)	+E/-W (ft)	Vertical Section (ft)	Dogleg Rate (°/100ft)	Build Rate (°/100ft)	Turn Rate (°/100ft)
0.0	0.00	0.00	0.0	0.0	0.0	0.0	0.00	0.00	0.00
40.0	0.00	0.00	40.0	0.0	0.0	0.0	0.00	0.00	0.00
80.0	0.00	0.00	80.0	0.0	0.0	0.0	0.00	0.00	0.00
120.0	0.00	0.00	120.0	0.0	0.0	0.0	0.00	0.00	0.00
160.0	0.00	0.00	160.0	0.0	0.0	0.0	0.00	0.00	0.00
200.0	0.00	0.00	200.0	0.0	0.0	0.0	0.00	0.00	0.00
240.0	0.00	0.00	240.0	0.0	0.0	0.0	0.00	0.00	0.00
280.0	0.00	0.00	280.0	0.0	0.0	0.0	0.00	0.00	0.00
300.0	0.00	0.00	300.0	0.0	0.0	0.0	0.00	0.00	0.00
320.0	0.40	164.06	320.0	-0.1	0.0	0.1	2.00	2.00	0.00
360.0	1.20	164.06	360.0	-0.6	0.2	0.6	2.00	2.00	0.00
400.0	2.00	164.06	400.0	-1.7	0.5	1.7	2.00	2.00	0.00
440.0	2.80	164.06	439.9	-3.3	0.9	3.4	2.00	2.00	0.00
480.0	3.60	164.06	479.9	-5.4	1.6	5.7	2.00	2.00	0.00
520.0	4.40	164.06	519.8	-8.1	2.3	8.4	2.00	2.00	0.00
560.0	5.20	164.06	559.6	-11.3	3.2	11.8	2.00	2.00	0.00
600.0	6.00	164.06	599.5	-15.1	4.3	15.7	2.00	2.00	0.00
640.0	6.80	164.06	639.2	-19.4	5.5	20.2	2.00	2.00	0.00
680.0	7.60	164.06	678.9	-24.2	6.9	25.2	2.00	2.00	0.00
701.3	8.03	164.06	700.0	-27.0	7.7	28.1	2.00	2.00	0.00
8 5/8"									
720.0	8.40	164.06	718.5	-29.6	8.4	30.7	2.00	2.00	0.00
760.0	9.20	164.06	758.0	-35.4	10.1	36.9	2.00	2.00	0.00
800.0	10.00	164.06	797.5	-41.8	12.0	43.5	2.00	2.00	0.00
803.4	10.07	164.06	800.8	-42.4	12.1	44.1	2.00	2.00	0.00
840.0	10.07	164.06	836.8	-48.6	13.9	50.5	0.00	0.00	0.00
880.0	10.07	164.06	876.2	-55.3	15.8	57.5	0.00	0.00	0.00
920.0	10.07	164.06	915.6	-62.0	17.7	64.5	0.00	0.00	0.00
960.0	10.07	164.06	955.0	-68.7	19.6	71.5	0.00	0.00	0.00
1,000.0	10.07	164.06	994.4	-75.5	21.6	78.5	0.00	0.00	0.00
1,040.0	10.07	164.06	1,033.8	-82.2	23.5	85.5	0.00	0.00	0.00
1,080.0	10.07	164.06	1,073.2	-88.9	25.4	92.5	0.00	0.00	0.00
1,120.0	10.07	164.06	1,112.5	-95.6	27.3	99.5	0.00	0.00	0.00
1,160.0	10.07	164.06	1,151.9	-102.4	29.2	106.5	0.00	0.00	0.00
1,200.0	10.07	164.06	1,191.3	-109.1	31.2	113.5	0.00	0.00	0.00
1,240.0	10.07	164.06	1,230.7	-115.8	33.1	120.4	0.00	0.00	0.00
1,280.0	10.07	164.06	1,270.1	-122.5	35.0	127.4	0.00	0.00	0.00
1,320.0	10.07	164.06	1,309.5	-129.3	36.9	134.4	0.00	0.00	0.00
1,360.0	10.07	164.06	1,348.8	-136.0	38.8	141.4	0.00	0.00	0.00
1,400.0	10.07	164.06	1,388.2	-142.7	40.8	148.4	0.00	0.00	0.00
1,440.0	10.07	164.06	1,427.6	-149.4	42.7	155.4	0.00	0.00	0.00
1,480.0	10.07	164.06	1,467.0	-156.2	44.6	162.4	0.00	0.00	0.00
1,520.0	10.07	164.06	1,506.4	-162.9	46.5	169.4	0.00	0.00	0.00
1,560.0	10.07	164.06	1,545.8	-169.6	48.5	176.4	0.00	0.00	0.00
1,600.0	10.07	164.06	1,585.1	-176.3	50.4	183.4	0.00	0.00	0.00
1,640.0	10.07	164.06	1,624.5	-183.0	52.3	190.4	0.00	0.00	0.00
1,680.0	10.07	164.06	1,663.9	-189.8	54.2	197.4	0.00	0.00	0.00
1,720.0	10.07	164.06	1,703.3	-196.5	56.1	204.4	0.00	0.00	0.00
1,760.0	10.07	164.06	1,742.7	-203.2	58.1	211.4	0.00	0.00	0.00
1,800.0	10.07	164.06	1,782.1	-209.9	60.0	218.3	0.00	0.00	0.00
1,840.0	10.07	164.06	1,821.4	-216.7	61.9	225.3	0.00	0.00	0.00
1,880.0	10.07	164.06	1,860.8	-223.4	63.8	232.3	0.00	0.00	0.00
1,920.0	10.07	164.06	1,900.2	-230.1	65.7	239.3	0.00	0.00	0.00
1,960.0	10.07	164.06	1,939.6	-236.8	67.7	246.3	0.00	0.00	0.00

<b>Database:</b>	Landmark	<b>Local Co-ordinate Reference:</b>	Well SRC Aims 43-10D
<b>Company:</b>	Synergy Resources	<b>TVD Reference:</b>	WELL @ 4871.0ft (Original Well Elev)
<b>Project:</b>	SEC.10-T5N-R66W	<b>MD Reference:</b>	WELL @ 4871.0ft (Original Well Elev)
<b>Site:</b>	SRC Aims/GCC Pad Sec.10-T5N-R66W	<b>North Reference:</b>	True
<b>Well:</b>	SRC Aims 43-10D	<b>Survey Calculation Method:</b>	Minimum Curvature
<b>Wellbore:</b>	Wellbore #1		
<b>Design:</b>	Plan #2 (9-21-11)		

Planned Survey									
Measured Depth (ft)	Inclination (°)	Azimuth (°)	Vertical Depth (ft)	+N/-S (ft)	+E/-W (ft)	Vertical Section (ft)	Dogleg Rate (°/100ft)	Build Rate (°/100ft)	Turn Rate (°/100ft)
2,000.0	10.07	164.06	1,979.0	-243.6	69.6	253.3	0.00	0.00	0.00
2,040.0	10.07	164.06	2,018.4	-250.3	71.5	260.3	0.00	0.00	0.00
2,080.0	10.07	164.06	2,057.8	-257.0	73.4	267.3	0.00	0.00	0.00
2,120.0	10.07	164.06	2,097.1	-263.7	75.3	274.3	0.00	0.00	0.00
2,160.0	10.07	164.06	2,136.5	-270.5	77.3	281.3	0.00	0.00	0.00
2,200.0	10.07	164.06	2,175.9	-277.2	79.2	288.3	0.00	0.00	0.00
2,240.0	10.07	164.06	2,215.3	-283.9	81.1	295.3	0.00	0.00	0.00
2,280.0	10.07	164.06	2,254.7	-290.6	83.0	302.3	0.00	0.00	0.00
2,320.0	10.07	164.06	2,294.1	-297.4	84.9	309.3	0.00	0.00	0.00
2,360.0	10.07	164.06	2,333.4	-304.1	86.9	316.2	0.00	0.00	0.00
2,400.0	10.07	164.06	2,372.8	-310.8	88.8	323.2	0.00	0.00	0.00
2,440.0	10.07	164.06	2,412.2	-317.5	90.7	330.2	0.00	0.00	0.00
2,480.0	10.07	164.06	2,451.6	-324.3	92.6	337.2	0.00	0.00	0.00
2,520.0	10.07	164.06	2,491.0	-331.0	94.6	344.2	0.00	0.00	0.00
2,560.0	10.07	164.06	2,530.4	-337.7	96.5	351.2	0.00	0.00	0.00
2,600.0	10.07	164.06	2,569.7	-344.4	98.4	358.2	0.00	0.00	0.00
2,640.0	10.07	164.06	2,609.1	-351.1	100.3	365.2	0.00	0.00	0.00
2,680.0	10.07	164.06	2,648.5	-357.9	102.2	372.2	0.00	0.00	0.00
2,720.0	10.07	164.06	2,687.9	-364.6	104.2	379.2	0.00	0.00	0.00
2,760.0	10.07	164.06	2,727.3	-371.3	106.1	386.2	0.00	0.00	0.00
2,800.0	10.07	164.06	2,766.7	-378.0	108.0	393.2	0.00	0.00	0.00
2,840.0	10.07	164.06	2,806.0	-384.8	109.9	400.2	0.00	0.00	0.00
2,880.0	10.07	164.06	2,845.4	-391.5	111.8	407.2	0.00	0.00	0.00
2,920.0	10.07	164.06	2,884.8	-398.2	113.8	414.1	0.00	0.00	0.00
2,960.0	10.07	164.06	2,924.2	-404.9	115.7	421.1	0.00	0.00	0.00
3,000.0	10.07	164.06	2,963.6	-411.7	117.6	428.1	0.00	0.00	0.00
3,040.0	10.07	164.06	3,003.0	-418.4	119.5	435.1	0.00	0.00	0.00
3,080.0	10.07	164.06	3,042.4	-425.1	121.4	442.1	0.00	0.00	0.00
3,120.0	10.07	164.06	3,081.7	-431.8	123.4	449.1	0.00	0.00	0.00
3,137.7	10.07	164.06	3,099.2	-434.8	124.2	452.2	0.00	0.00	0.00
3,160.0	9.62	164.06	3,121.1	-438.5	125.3	456.0	2.00	-2.00	0.00
3,200.0	8.82	164.06	3,160.6	-444.6	127.0	462.4	2.00	-2.00	0.00
3,240.0	8.02	164.06	3,200.2	-450.3	128.6	468.3	2.00	-2.00	0.00
3,280.0	7.22	164.06	3,239.8	-455.4	130.1	473.6	2.00	-2.00	0.00
3,320.0	6.42	164.06	3,279.5	-459.9	131.4	478.3	2.00	-2.00	0.00
3,360.0	5.62	164.06	3,319.3	-464.0	132.5	482.5	2.00	-2.00	0.00
3,400.0	4.82	164.06	3,359.2	-467.5	133.5	486.2	2.00	-2.00	0.00
3,440.0	4.02	164.06	3,399.0	-470.4	134.4	489.3	2.00	-2.00	0.00
3,480.0	3.22	164.06	3,439.0	-472.9	135.1	491.8	2.00	-2.00	0.00
3,520.0	2.42	164.06	3,478.9	-474.8	135.6	493.8	2.00	-2.00	0.00
3,560.0	1.62	164.06	3,518.9	-476.1	136.0	495.2	2.00	-2.00	0.00
3,600.0	0.82	164.06	3,558.9	-476.9	136.3	496.0	2.00	-2.00	0.00
3,640.0	0.02	164.06	3,598.9	-477.2	136.3	496.3	2.00	-2.00	0.00
3,641.1	0.00	0.00	3,600.0	-477.2	136.3	496.3	2.00	-2.00	0.00
TARGET BHL 1976'FSL, 660'FEL									
3,680.0	0.00	0.00	3,638.9	-477.2	136.3	496.3	0.00	0.00	0.00
3,720.0	0.00	0.00	3,678.9	-477.2	136.3	496.3	0.00	0.00	0.00
3,760.0	0.00	0.00	3,718.9	-477.2	136.3	496.3	0.00	0.00	0.00
3,800.0	0.00	0.00	3,758.9	-477.2	136.3	496.3	0.00	0.00	0.00
3,840.0	0.00	0.00	3,798.9	-477.2	136.3	496.3	0.00	0.00	0.00
3,880.0	0.00	0.00	3,838.9	-477.2	136.3	496.3	0.00	0.00	0.00
3,920.0	0.00	0.00	3,878.9	-477.2	136.3	496.3	0.00	0.00	0.00
3,960.0	0.00	0.00	3,918.9	-477.2	136.3	496.3	0.00	0.00	0.00

<b>Database:</b>	Landmark	<b>Local Co-ordinate Reference:</b>	Well SRC Aims 43-10D
<b>Company:</b>	Synergy Resources	<b>TVD Reference:</b>	WELL @ 4871.0ft (Original Well Elev)
<b>Project:</b>	SEC.10-T5N-R66W	<b>MD Reference:</b>	WELL @ 4871.0ft (Original Well Elev)
<b>Site:</b>	SRC Aims/GCC Pad Sec.10-T5N-R66W	<b>North Reference:</b>	True
<b>Well:</b>	SRC Aims 43-10D	<b>Survey Calculation Method:</b>	Minimum Curvature
<b>Wellbore:</b>	Wellbore #1		
<b>Design:</b>	Plan #2 (9-21-11)		

Planned Survey									
Measured Depth (ft)	Inclination (°)	Azimuth (°)	Vertical Depth (ft)	+N/-S (ft)	+E/-W (ft)	Vertical Section (ft)	Dogleg Rate (°/100ft)	Build Rate (°/100ft)	Turn Rate (°/100ft)
4,000.0	0.00	0.00	3,958.9	-477.2	136.3	496.3	0.00	0.00	0.00
4,040.0	0.00	0.00	3,998.9	-477.2	136.3	496.3	0.00	0.00	0.00
4,080.0	0.00	0.00	4,038.9	-477.2	136.3	496.3	0.00	0.00	0.00
4,120.0	0.00	0.00	4,078.9	-477.2	136.3	496.3	0.00	0.00	0.00
4,160.0	0.00	0.00	4,118.9	-477.2	136.3	496.3	0.00	0.00	0.00
4,200.0	0.00	0.00	4,158.9	-477.2	136.3	496.3	0.00	0.00	0.00
4,240.0	0.00	0.00	4,198.9	-477.2	136.3	496.3	0.00	0.00	0.00
4,280.0	0.00	0.00	4,238.9	-477.2	136.3	496.3	0.00	0.00	0.00
4,320.0	0.00	0.00	4,278.9	-477.2	136.3	496.3	0.00	0.00	0.00
4,360.0	0.00	0.00	4,318.9	-477.2	136.3	496.3	0.00	0.00	0.00
4,400.0	0.00	0.00	4,358.9	-477.2	136.3	496.3	0.00	0.00	0.00
4,440.0	0.00	0.00	4,398.9	-477.2	136.3	496.3	0.00	0.00	0.00
4,480.0	0.00	0.00	4,438.9	-477.2	136.3	496.3	0.00	0.00	0.00
4,520.0	0.00	0.00	4,478.9	-477.2	136.3	496.3	0.00	0.00	0.00
4,560.0	0.00	0.00	4,518.9	-477.2	136.3	496.3	0.00	0.00	0.00
4,600.0	0.00	0.00	4,558.9	-477.2	136.3	496.3	0.00	0.00	0.00
4,640.0	0.00	0.00	4,598.9	-477.2	136.3	496.3	0.00	0.00	0.00
4,680.0	0.00	0.00	4,638.9	-477.2	136.3	496.3	0.00	0.00	0.00
4,720.0	0.00	0.00	4,678.9	-477.2	136.3	496.3	0.00	0.00	0.00
4,760.0	0.00	0.00	4,718.9	-477.2	136.3	496.3	0.00	0.00	0.00
4,800.0	0.00	0.00	4,758.9	-477.2	136.3	496.3	0.00	0.00	0.00
4,840.0	0.00	0.00	4,798.9	-477.2	136.3	496.3	0.00	0.00	0.00
4,880.0	0.00	0.00	4,838.9	-477.2	136.3	496.3	0.00	0.00	0.00
4,920.0	0.00	0.00	4,878.9	-477.2	136.3	496.3	0.00	0.00	0.00
4,960.0	0.00	0.00	4,918.9	-477.2	136.3	496.3	0.00	0.00	0.00
5,000.0	0.00	0.00	4,958.9	-477.2	136.3	496.3	0.00	0.00	0.00
5,040.0	0.00	0.00	4,998.9	-477.2	136.3	496.3	0.00	0.00	0.00
5,080.0	0.00	0.00	5,038.9	-477.2	136.3	496.3	0.00	0.00	0.00
5,120.0	0.00	0.00	5,078.9	-477.2	136.3	496.3	0.00	0.00	0.00
5,160.0	0.00	0.00	5,118.9	-477.2	136.3	496.3	0.00	0.00	0.00
5,200.0	0.00	0.00	5,158.9	-477.2	136.3	496.3	0.00	0.00	0.00
5,240.0	0.00	0.00	5,198.9	-477.2	136.3	496.3	0.00	0.00	0.00
5,280.0	0.00	0.00	5,238.9	-477.2	136.3	496.3	0.00	0.00	0.00
5,320.0	0.00	0.00	5,278.9	-477.2	136.3	496.3	0.00	0.00	0.00
5,360.0	0.00	0.00	5,318.9	-477.2	136.3	496.3	0.00	0.00	0.00
5,400.0	0.00	0.00	5,358.9	-477.2	136.3	496.3	0.00	0.00	0.00
5,440.0	0.00	0.00	5,398.9	-477.2	136.3	496.3	0.00	0.00	0.00
5,480.0	0.00	0.00	5,438.9	-477.2	136.3	496.3	0.00	0.00	0.00
5,520.0	0.00	0.00	5,478.9	-477.2	136.3	496.3	0.00	0.00	0.00
5,560.0	0.00	0.00	5,518.9	-477.2	136.3	496.3	0.00	0.00	0.00
5,600.0	0.00	0.00	5,558.9	-477.2	136.3	496.3	0.00	0.00	0.00
5,640.0	0.00	0.00	5,598.9	-477.2	136.3	496.3	0.00	0.00	0.00
5,680.0	0.00	0.00	5,638.9	-477.2	136.3	496.3	0.00	0.00	0.00
5,720.0	0.00	0.00	5,678.9	-477.2	136.3	496.3	0.00	0.00	0.00
5,760.0	0.00	0.00	5,718.9	-477.2	136.3	496.3	0.00	0.00	0.00
5,800.0	0.00	0.00	5,758.9	-477.2	136.3	496.3	0.00	0.00	0.00
5,840.0	0.00	0.00	5,798.9	-477.2	136.3	496.3	0.00	0.00	0.00
5,880.0	0.00	0.00	5,838.9	-477.2	136.3	496.3	0.00	0.00	0.00
5,920.0	0.00	0.00	5,878.9	-477.2	136.3	496.3	0.00	0.00	0.00
5,960.0	0.00	0.00	5,918.9	-477.2	136.3	496.3	0.00	0.00	0.00
6,000.0	0.00	0.00	5,958.9	-477.2	136.3	496.3	0.00	0.00	0.00
6,040.0	0.00	0.00	5,998.9	-477.2	136.3	496.3	0.00	0.00	0.00
6,080.0	0.00	0.00	6,038.9	-477.2	136.3	496.3	0.00	0.00	0.00
6,120.0	0.00	0.00	6,078.9	-477.2	136.3	496.3	0.00	0.00	0.00

**Database:** Landmark  
**Company:** Synergy Resources  
**Project:** SEC.10-T5N-R66W  
**Site:** SRC Aims/GCC Pad Sec.10-T5N-R66W  
**Well:** SRC Aims 43-10D  
**Wellbore:** Wellbore #1  
**Design:** Plan #2 (9-21-11)

**Local Co-ordinate Reference:** Well SRC Aims 43-10D  
**TVD Reference:** WELL @ 4871.0ft (Original Well Elev)  
**MD Reference:** WELL @ 4871.0ft (Original Well Elev)  
**North Reference:** True  
**Survey Calculation Method:** Minimum Curvature

### Planned Survey

Measured Depth (ft)	Inclination (°)	Azimuth (°)	Vertical Depth (ft)	+N/-S (ft)	+E/-W (ft)	Vertical Section (ft)	Dogleg Rate (°/100ft)	Build Rate (°/100ft)	Turn Rate (°/100ft)
6,160.0	0.00	0.00	6,118.9	-477.2	136.3	496.3	0.00	0.00	0.00
6,200.0	0.00	0.00	6,158.9	-477.2	136.3	496.3	0.00	0.00	0.00
6,240.0	0.00	0.00	6,198.9	-477.2	136.3	496.3	0.00	0.00	0.00
6,280.0	0.00	0.00	6,238.9	-477.2	136.3	496.3	0.00	0.00	0.00
6,320.0	0.00	0.00	6,278.9	-477.2	136.3	496.3	0.00	0.00	0.00
6,360.0	0.00	0.00	6,318.9	-477.2	136.3	496.3	0.00	0.00	0.00
6,400.0	0.00	0.00	6,358.9	-477.2	136.3	496.3	0.00	0.00	0.00
6,440.0	0.00	0.00	6,398.9	-477.2	136.3	496.3	0.00	0.00	0.00
6,480.0	0.00	0.00	6,438.9	-477.2	136.3	496.3	0.00	0.00	0.00
6,520.0	0.00	0.00	6,478.9	-477.2	136.3	496.3	0.00	0.00	0.00
6,560.0	0.00	0.00	6,518.9	-477.2	136.3	496.3	0.00	0.00	0.00
6,600.0	0.00	0.00	6,558.9	-477.2	136.3	496.3	0.00	0.00	0.00
6,640.0	0.00	0.00	6,598.9	-477.2	136.3	496.3	0.00	0.00	0.00
6,680.0	0.00	0.00	6,638.9	-477.2	136.3	496.3	0.00	0.00	0.00
6,720.0	0.00	0.00	6,678.9	-477.2	136.3	496.3	0.00	0.00	0.00
6,741.1	0.00	0.00	6,700.0	-477.2	136.3	496.3	0.00	0.00	0.00
<b>LEGAL BOX 400' X 400' 1976'FSL, 660'FEL</b>									
6,760.0	0.00	0.00	6,718.9	-477.2	136.3	496.3	0.00	0.00	0.00
6,800.0	0.00	0.00	6,758.9	-477.2	136.3	496.3	0.00	0.00	0.00
6,840.0	0.00	0.00	6,798.9	-477.2	136.3	496.3	0.00	0.00	0.00
6,880.0	0.00	0.00	6,838.9	-477.2	136.3	496.3	0.00	0.00	0.00
6,920.0	0.00	0.00	6,878.9	-477.2	136.3	496.3	0.00	0.00	0.00
6,960.0	0.00	0.00	6,918.9	-477.2	136.3	496.3	0.00	0.00	0.00
7,000.0	0.00	0.00	6,958.9	-477.2	136.3	496.3	0.00	0.00	0.00
7,040.0	0.00	0.00	6,998.9	-477.2	136.3	496.3	0.00	0.00	0.00
7,080.0	0.00	0.00	7,038.9	-477.2	136.3	496.3	0.00	0.00	0.00
7,120.0	0.00	0.00	7,078.9	-477.2	136.3	496.3	0.00	0.00	0.00
7,160.0	0.00	0.00	7,118.9	-477.2	136.3	496.3	0.00	0.00	0.00
7,200.0	0.00	0.00	7,158.9	-477.2	136.3	496.3	0.00	0.00	0.00
7,240.0	0.00	0.00	7,198.9	-477.2	136.3	496.3	0.00	0.00	0.00
7,280.0	0.00	0.00	7,238.9	-477.2	136.3	496.3	0.00	0.00	0.00
7,320.0	0.00	0.00	7,278.9	-477.2	136.3	496.3	0.00	0.00	0.00
7,360.0	0.00	0.00	7,318.9	-477.2	136.3	496.3	0.00	0.00	0.00
7,400.0	0.00	0.00	7,358.9	-477.2	136.3	496.3	0.00	0.00	0.00
7,440.0	0.00	0.00	7,398.9	-477.2	136.3	496.3	0.00	0.00	0.00
7,480.0	0.00	0.00	7,438.9	-477.2	136.3	496.3	0.00	0.00	0.00
7,520.0	0.00	0.00	7,478.9	-477.2	136.3	496.3	0.00	0.00	0.00
7,560.0	0.00	0.00	7,518.9	-477.2	136.3	496.3	0.00	0.00	0.00
7,600.0	0.00	0.00	7,558.9	-477.2	136.3	496.3	0.00	0.00	0.00
7,640.0	0.00	0.00	7,598.9	-477.2	136.3	496.3	0.00	0.00	0.00
7,680.0	0.00	0.00	7,638.9	-477.2	136.3	496.3	0.00	0.00	0.00
7,720.0	0.00	0.00	7,678.9	-477.2	136.3	496.3	0.00	0.00	0.00
7,760.0	0.00	0.00	7,718.9	-477.2	136.3	496.3	0.00	0.00	0.00
7,800.0	0.00	0.00	7,758.9	-477.2	136.3	496.3	0.00	0.00	0.00
7,840.0	0.00	0.00	7,798.9	-477.2	136.3	496.3	0.00	0.00	0.00
7,880.0	0.00	0.00	7,838.9	-477.2	136.3	496.3	0.00	0.00	0.00
7,920.0	0.00	0.00	7,878.9	-477.2	136.3	496.3	0.00	0.00	0.00
7,960.0	0.00	0.00	7,918.9	-477.2	136.3	496.3	0.00	0.00	0.00
8,000.0	0.00	0.00	7,958.9	-477.2	136.3	496.3	0.00	0.00	0.00
8,006.1	0.00	0.00	7,965.0	-477.2	136.3	496.3	0.00	0.00	0.00

<b>Database:</b>	Landmark	<b>Local Co-ordinate Reference:</b>	Well SRC Aims 43-10D
<b>Company:</b>	Synergy Resources	<b>TVD Reference:</b>	WELL @ 4871.0ft (Original Well Elev)
<b>Project:</b>	SEC.10-T5N-R66W	<b>MD Reference:</b>	WELL @ 4871.0ft (Original Well Elev)
<b>Site:</b>	SRC Aims/GCC Pad Sec.10-T5N-R66W	<b>North Reference:</b>	True
<b>Well:</b>	SRC Aims 43-10D	<b>Survey Calculation Method:</b>	Minimum Curvature
<b>Wellbore:</b>	Wellbore #1		
<b>Design:</b>	Plan #2 (9-21-11)		

Targets									
Target Name									
- hit/miss target	Dip Angle	Dip Dir.	TVD	+N/-S	+E/-W	Northing	Easting	Latitude	Longitude
- Shape	(°)	(°)	(ft)	(ft)	(ft)	(ft)	(ft)		
TARGET BHL 1976'F:	0.00	0.00	3,600.0	-477.2	136.3	340,882.22	4,107,682.27	40.412310	-104.758660
- plan hits target center									
- Point									
LEGAL BOX 400' X 400'	0.00	0.00	6,700.0	-477.2	136.3	340,882.21	4,107,682.25	40.412310	-104.758660
- plan hits target center									
- Rectangle (sides W400.0 H400.0 D1,265.0)									

Casing Points					
Measured Depth	Vertical Depth		Name	Casing Diameter	Hole Diameter
(ft)	(ft)			(")	(")
701.3	700.0	8 5/8"		8-5/8	12-1/4





# **Directional**

## **Synergy Resources**

**SEC.10-T5N-R66W**

**SRC Aims/GCC Pad Sec.10-T5N-R66W**

**SRC Aims 43-10D**

**Wellbore #1**

**Plan #2 (9-21-11)**

## **Anticollision Report**

**05 October, 2011**



<b>Company:</b>	Synergy Resources	<b>Local Co-ordinate Reference:</b>	Well SRC Aims 43-10D
<b>Project:</b>	SEC.10-T5N-R66W	<b>TVD Reference:</b>	WELL @ 4871.0ft (Original Well Elev)
<b>Reference Site:</b>	SRC Aims/GCC Pad Sec.10-T5N-R66W	<b>MD Reference:</b>	WELL @ 4871.0ft (Original Well Elev)
<b>Site Error:</b>	0.0ft	<b>North Reference:</b>	True
<b>Reference Well:</b>	SRC Aims 43-10D	<b>Survey Calculation Method:</b>	Minimum Curvature
<b>Well Error:</b>	0.0ft	<b>Output errors are at</b>	2.00 sigma
<b>Reference Wellbore</b>	Wellbore #1	<b>Database:</b>	Landmark
<b>Reference Design:</b>	Plan #2 (9-21-11)	<b>Offset TVD Reference:</b>	Offset Datum

Offset Design												Offset Site Error:	0.0ft
Survey Program: 0-MWID												Offset Well Error:	0.0ft
Reference		Offset		Semi Major Axis			Distance						Warning
Measured Depth (ft)	Vertical Depth (ft)	Measured Depth (ft)	Vertical Depth (ft)	Reference (ft)	Offset (ft)	Highside Toolface (°)	Offset Wellbore Centre +N/-S (ft)	+E/-W (ft)	Between Centres (ft)	Between Ellipses (ft)	Minimum Separation (ft)	Separation Factor	
2,300.0	2,274.4	2,223.0	2,132.9	7.7	10.7	83.09	-415.6	-267.4	398.2	382.7	15.43	25.797	
2,400.0	2,372.8	2,316.6	2,217.3	8.1	11.5	82.03	-449.5	-289.8	432.6	416.3	16.24	26.635	
2,500.0	2,471.3	2,410.2	2,301.6	8.5	12.3	81.12	-483.5	-312.3	467.1	450.0	17.05	27.401	
2,600.0	2,569.7	2,503.9	2,385.9	8.9	13.1	80.34	-517.4	-334.7	501.6	483.8	17.85	28.102	
2,700.0	2,668.2	2,597.5	2,470.2	9.3	13.9	79.66	-551.3	-357.1	536.3	517.7	18.66	28.744	
2,800.0	2,766.7	2,691.1	2,554.5	9.7	14.7	79.06	-585.3	-379.6	571.0	551.6	19.47	29.336	
2,900.0	2,865.1	2,784.7	2,638.9	10.1	15.5	78.53	-619.2	-402.0	605.8	585.5	20.27	29.882	
3,000.0	2,963.6	2,878.4	2,723.2	10.5	16.3	78.06	-653.1	-424.4	640.6	619.5	21.08	30.387	
3,100.0	3,062.0	2,972.0	2,807.5	10.9	17.2	77.64	-687.1	-446.9	675.5	653.6	21.89	30.855	
3,137.7	3,099.2	3,007.3	2,839.3	11.1	17.5	77.49	-699.9	-455.3	688.6	666.4	22.20	31.023	
3,200.0	3,160.6	3,065.5	2,891.7	11.3	18.0	77.66	-721.0	-469.3	710.5	687.8	22.72	31.274	
3,300.0	3,259.7	3,158.6	2,975.6	11.5	18.8	77.75	-754.7	-491.6	746.2	722.8	23.44	31.836	
3,400.0	3,359.2	3,251.0	3,058.8	11.8	19.6	77.66	-788.2	-513.7	782.7	758.6	24.09	32.493	
3,500.0	3,458.9	3,342.8	3,141.5	11.9	20.4	77.42	-821.5	-535.7	820.1	795.5	24.67	33.246	
3,600.0	3,558.9	3,433.7	3,223.4	12.1	21.2	77.05	-854.4	-557.5	858.5	833.3	25.18	34.098	
3,641.1	3,600.0	3,470.8	3,256.8	12.1	21.5	-119.07	-867.9	-566.4	874.6	849.2	25.37	34.469	
3,700.0	3,658.9	3,523.9	3,304.6	12.2	22.0	-119.81	-887.1	-579.1	897.9	872.3	25.55	35.146	
3,800.0	3,758.9	3,613.9	3,385.7	12.3	22.8	-120.98	-919.8	-600.7	937.6	911.8	25.83	36.296	
3,900.0	3,858.9	3,704.0	3,466.8	12.4	23.5	-122.06	-952.4	-622.3	977.7	951.5	26.13	37.420	
4,000.0	3,958.9	3,794.0	3,547.9	12.6	24.3	-123.06	-985.0	-643.9	1,018.0	991.6	26.43	38.518	
4,100.0	4,058.9	3,884.1	3,629.0	12.7	25.1	-123.98	-1,017.7	-665.5	1,058.6	1,031.8	26.74	39.587	
4,200.0	4,158.9	3,974.2	3,710.2	12.8	25.9	-124.84	-1,050.3	-687.1	1,099.4	1,072.3	27.06	40.626	
4,300.0	4,258.9	4,064.2	3,791.3	13.0	26.7	-125.64	-1,083.0	-708.6	1,140.4	1,113.0	27.39	41.636	
4,400.0	4,358.9	4,154.3	3,872.4	13.1	27.5	-126.38	-1,115.6	-730.2	1,181.6	1,153.8	27.73	42.615	
4,500.0	4,458.9	4,244.4	3,953.5	13.2	28.3	-127.07	-1,148.3	-751.8	1,222.9	1,194.8	28.07	43.564	
4,600.0	4,558.9	4,334.4	4,034.6	13.4	29.1	-127.72	-1,180.9	-773.4	1,264.4	1,236.0	28.42	44.482	
4,700.0	4,658.9	4,424.5	4,115.7	13.5	29.8	-128.33	-1,213.6	-795.0	1,306.0	1,277.2	28.78	45.371	
4,800.0	4,758.9	4,514.6	4,196.9	13.6	30.6	-128.90	-1,246.2	-816.6	1,347.7	1,318.6	29.15	46.231	
4,900.0	4,858.9	4,604.6	4,278.0	13.8	31.4	-129.44	-1,278.8	-838.1	1,389.5	1,360.0	29.52	47.063	
5,000.0	4,958.9	4,694.7	4,359.1	13.9	32.2	-129.95	-1,311.5	-859.7	1,431.5	1,401.5	29.91	47.866	
5,100.0	5,058.9	4,784.8	4,440.2	14.1	33.0	-130.43	-1,344.1	-881.3	1,473.5	1,443.2	30.29	48.643	
5,200.0	5,158.9	4,874.8	4,521.3	14.2	33.8	-130.88	-1,376.8	-902.9	1,515.6	1,484.9	30.68	49.393	
5,300.0	5,258.9	4,964.9	4,602.5	14.4	34.6	-131.31	-1,409.4	-924.5	1,557.7	1,526.6	31.08	50.117	
5,400.0	5,358.9	5,055.0	4,683.6	14.5	35.4	-131.71	-1,442.1	-946.1	1,600.0	1,568.5	31.49	50.816	
5,500.0	5,458.9	5,145.0	4,764.7	14.7	36.2	-132.10	-1,474.7	-967.7	1,642.3	1,610.4	31.89	51.492	
5,600.0	5,558.9	5,235.1	4,845.8	14.9	36.9	-132.46	-1,507.4	-989.2	1,684.6	1,652.3	32.31	52.145	
5,700.0	5,658.9	5,325.2	4,926.9	15.0	37.7	-132.81	-1,540.0	-1,010.8	1,727.0	1,694.3	32.72	52.775	
5,800.0	5,758.9	5,404.6	5,009.0	15.2	39.0	-133.43	-1,602.2	-1,051.9	1,768.0	1,734.7	33.32	53.054	
5,900.0	5,858.9	5,744.7	5,315.2	15.3	40.2	-134.06	-1,671.9	-1,098.0	1,802.1	1,768.1	34.02	52.971	
6,000.0	5,958.9	5,998.6	5,559.8	15.5	41.3	-134.53	-1,728.3	-1,135.3	1,828.2	1,793.5	34.71	52.666	
6,100.0	6,058.9	6,263.3	5,820.1	15.7	42.1	-134.84	-1,767.7	-1,161.3	1,845.7	1,810.4	35.36	52.200	
6,200.0	6,158.9	6,534.6	6,090.3	15.8	42.5	-134.98	-1,787.0	-1,174.1	1,854.1	1,818.2	35.93	51.606	
6,300.0	6,258.9	6,704.2	6,259.9	16.0	42.7	-135.00	-1,788.8	-1,175.3	1,854.9	1,818.5	36.31	51.077	
6,400.0	6,358.9	6,804.2	6,359.9	16.2	42.7	-135.00	-1,788.8	-1,175.3	1,854.9	1,818.2	36.61	50.669	
6,500.0	6,458.9	6,904.2	6,459.9	16.3	42.8	-135.00	-1,788.8	-1,175.3	1,854.9	1,818.0	36.90	50.264	
6,600.0	6,558.9	7,004.2	6,559.9	16.5	42.9	-135.00	-1,788.8	-1,175.3	1,854.9	1,817.7	37.20	49.861	
6,700.0	6,658.9	7,104.2	6,659.9	16.7	42.9	-135.00	-1,788.8	-1,175.3	1,854.9	1,817.4	37.50	49.461	
6,800.0	6,758.9	7,204.2	6,759.9	16.9	43.0	-135.00	-1,788.8	-1,175.3	1,854.9	1,817.0	37.80	49.064	
6,900.0	6,858.9	7,304.2	6,859.9	17.0	43.0	-135.00	-1,788.8	-1,175.3	1,854.9	1,816.7	38.11	48.670	
7,000.0	6,958.9	7,404.2	6,959.9	17.2	43.1	-135.00	-1,788.8	-1,175.3	1,854.9	1,816.4	38.42	48.278	
7,100.0	7,058.9	7,504.2	7,059.9	17.4	43.2	-135.00	-1,788.8	-1,175.3	1,854.9	1,816.1	38.73	47.890	
7,200.0	7,158.9	7,604.2	7,159.9	17.6	43.2	-135.00	-1,788.8	-1,175.3	1,854.9	1,815.8	39.05	47.505	

CC - Min centre to center distance or convergent point, SF - min separation factor, ES - min ellipse separation

<b>Company:</b>	Synergy Resources	<b>Local Co-ordinate Reference:</b>	Well SRC Aims 43-10D
<b>Project:</b>	SEC.10-T5N-R66W	<b>TVD Reference:</b>	WELL @ 4871.0ft (Original Well Elev)
<b>Reference Site:</b>	SRC Aims/GCC Pad Sec.10-T5N-R66W	<b>MD Reference:</b>	WELL @ 4871.0ft (Original Well Elev)
<b>Site Error:</b>	0.0ft	<b>North Reference:</b>	True
<b>Reference Well:</b>	SRC Aims 43-10D	<b>Survey Calculation Method:</b>	Minimum Curvature
<b>Well Error:</b>	0.0ft	<b>Output errors are at</b>	2.00 sigma
<b>Reference Wellbore</b>	Wellbore #1	<b>Database:</b>	Landmark
<b>Reference Design:</b>	Plan #2 (9-21-11)	<b>Offset TVD Reference:</b>	Offset Datum

<b>Offset Design</b>												<b>Offset Site Error:</b>	0.0 ft
SRC Aims/GCC Pad Sec.10-T5N-R66W - SRC Aims 34-10D - Wellbore #1 - Plan #2 (9-21-11)												<b>Offset Well Error:</b>	0.0 ft
Survey Program: 0-MWD													
Reference		Offset		Semi Major Axis			Distance						
Measured Depth (ft)	Vertical Depth (ft)	Measured Depth (ft)	Vertical Depth (ft)	Reference (ft)	Offset (ft)	Highside Toolface (°)	Offset Wellbore Centre +N/-S (ft)	+E/-W (ft)	Between Centres (ft)	Between Ellipses (ft)	Minimum Separation (ft)	Separation Factor	Warning
7,300.0	7,258.9	7,704.2	7,259.9	17.8	43.3	-135.00	-1,788.8	-1,175.3	1,854.9	1,815.5	39.36	47.123	
7,400.0	7,358.9	7,804.2	7,359.9	17.9	43.4	-135.00	-1,788.8	-1,175.3	1,854.9	1,815.2	39.68	46.744	
7,500.0	7,458.9	7,904.2	7,459.9	18.1	43.4	-135.00	-1,788.8	-1,175.3	1,854.9	1,814.8	40.00	46.368	
7,600.0	7,558.9	8,004.2	7,559.9	18.3	43.5	-135.00	-1,788.8	-1,175.3	1,854.9	1,814.5	40.33	45.996	
7,700.0	7,658.9	8,104.2	7,659.9	18.5	43.6	-135.00	-1,788.8	-1,175.3	1,854.9	1,814.2	40.65	45.628	
7,800.0	7,758.9	8,204.2	7,759.9	18.7	43.6	-135.00	-1,788.8	-1,175.3	1,854.9	1,813.9	40.98	45.262	
7,900.0	7,858.9	8,304.2	7,859.9	18.9	43.7	-135.00	-1,788.8	-1,175.3	1,854.9	1,813.5	41.31	44.901	
7,970.4	7,929.3	8,374.6	7,930.3	19.0	43.8	-135.00	-1,788.8	-1,175.3	1,854.9	1,813.3	41.54	44.648	
8,006.1	7,965.0	8,409.3	7,965.0	19.1	43.8	-135.00	-1,788.8	-1,175.3	1,854.9	1,813.2	41.66	44.522	

<b>Company:</b>	Synergy Resources	<b>Local Co-ordinate Reference:</b>	Well SRC Aims 43-10D
<b>Project:</b>	SEC.10-T5N-R66W	<b>TVD Reference:</b>	WELL @ 4871.0ft (Original Well Elev)
<b>Reference Site:</b>	SRC Aims/GCC Pad Sec.10-T5N-R66W	<b>MD Reference:</b>	WELL @ 4871.0ft (Original Well Elev)
<b>Site Error:</b>	0.0ft	<b>North Reference:</b>	True
<b>Reference Well:</b>	SRC Aims 43-10D	<b>Survey Calculation Method:</b>	Minimum Curvature
<b>Well Error:</b>	0.0ft	<b>Output errors are at</b>	2.00 sigma
<b>Reference Wellbore</b>	Wellbore #1	<b>Database:</b>	Landmark
<b>Reference Design:</b>	Plan #2 (9-21-11)	<b>Offset TVD Reference:</b>	Offset Datum

Offset Design													Offset Site Error:	0.0ft
Survey Program: 0-MWD													Offset Well Error:	0.0ft
Reference		Offset		Semi Major Axis			Distance							Warning
Measured Depth (ft)	Vertical Depth (ft)	Measured Depth (ft)	Vertical Depth (ft)	Reference (ft)	Offset (ft)	Highside Toolface (°)	Offset Wellbore Centre +N/-S (ft)	+E/-W (ft)	Between Centres (ft)	Between Ellipses (ft)	Minimum Separation (ft)	Separation Factor		
0.0	0.0	0.0	0.0	0.0	0.0	117.64	-7.3	13.9	15.7	15.7	0.00	N/A		
100.0	100.0	100.0	100.0	0.1	0.1	117.64	-7.3	13.9	15.7	15.5	0.22	69.924		
200.0	200.0	200.0	200.0	0.3	0.3	117.64	-7.3	13.9	15.7	15.0	0.67	23.308		
300.0	300.0	300.0	300.0	0.6	0.6	111.26	-5.6	14.5	15.6	14.5	1.12	13.869		
353.8	353.8	353.7	353.7	0.7	0.7	-63.14	-3.4	15.3	15.5	14.1	1.35	11.429 CC, ES		
400.0	400.0	399.7	399.5	0.8	0.8	-77.36	-0.8	16.3	15.9	14.3	1.55	10.217 SF		
500.0	499.8	498.6	498.1	1.0	1.0	-114.04	7.4	18.6	21.9	19.9	2.00	10.924		
600.0	599.5	595.8	594.6	1.2	1.3	-137.74	18.8	20.6	37.9	35.4	2.49	15.214		
700.0	698.7	690.7	688.4	1.5	1.6	-149.36	33.0	22.3	62.4	59.4	2.97	20.996		
803.4	800.8	785.8	781.9	1.8	1.9	-155.68	50.3	23.8	95.4	91.9	3.47	27.478		
900.0	895.9	871.9	866.0	2.1	2.3	-159.20	68.7	25.1	131.1	127.2	3.92	33.415		
1,000.0	994.4	958.8	950.3	2.5	2.7	-161.35	89.8	26.1	171.1	166.7	4.39	38.955		
1,100.0	1,092.8	1,043.4	1,031.7	2.9	3.1	-162.75	112.7	27.0	213.9	209.1	4.86	44.003		
1,200.0	1,191.3	1,125.6	1,110.1	3.3	3.6	-163.71	137.4	27.6	259.5	254.2	5.33	48.661		
1,300.0	1,289.8	1,205.3	1,185.5	3.7	4.1	-164.40	163.4	28.2	307.6	301.8	5.80	53.006		
1,400.0	1,388.2	1,282.6	1,257.8	4.1	4.6	-164.92	190.6	28.5	358.1	351.8	6.27	57.098		
1,500.0	1,486.7	1,357.5	1,327.2	4.5	5.1	-165.32	218.7	28.7	410.9	404.1	6.75	60.900		
1,600.0	1,585.1	1,429.9	1,393.5	4.9	5.6	-165.64	247.7	28.8	465.8	458.6	7.21	64.648		
1,700.0	1,683.6	1,500.0	1,457.1	5.3	6.2	-165.89	277.4	28.7	522.9	515.2	7.67	68.208		
1,800.0	1,782.1	1,571.5	1,521.1	5.7	6.7	-166.11	309.1	28.5	581.8	573.7	8.14	71.489		
1,900.0	1,880.5	1,651.9	1,593.0	6.1	7.4	-166.31	345.2	28.3	641.2	632.6	8.62	74.364		
2,000.0	1,979.0	1,732.3	1,664.8	6.5	8.1	-166.48	381.3	28.1	700.6	691.5	9.11	76.934		
2,100.0	2,077.4	1,812.7	1,736.7	6.9	8.8	-166.62	417.4	27.9	760.1	750.5	9.60	79.213		
2,200.0	2,175.9	1,893.1	1,808.5	7.3	9.5	-166.74	453.5	27.7	819.5	809.4	10.09	81.243		
2,300.0	2,274.4	1,973.6	1,880.4	7.7	10.2	-166.84	489.6	27.4	878.9	868.4	10.58	83.059		
2,400.0	2,372.8	2,054.0	1,952.2	8.1	10.8	-166.94	525.8	27.2	938.4	927.3	11.08	84.696		
2,500.0	2,471.3	2,134.4	2,024.1	8.5	11.5	-167.02	561.9	27.0	997.8	986.2	11.58	86.177		
2,600.0	2,569.7	2,214.8	2,095.9	8.9	12.2	-167.09	598.0	26.8	1,057.2	1,045.2	12.08	87.523		
2,700.0	2,668.2	2,295.2	2,167.8	9.3	12.9	-167.15	634.1	26.5	1,116.7	1,104.1	12.58	88.749		
2,800.0	2,766.7	2,375.6	2,239.6	9.7	13.6	-167.21	670.2	26.3	1,176.1	1,163.0	13.09	89.869		
2,900.0	2,865.1	2,456.0	2,311.5	10.1	14.3	-167.26	706.3	26.1	1,235.6	1,222.0	13.59	90.897		
3,000.0	2,963.6	2,536.4	2,383.3	10.5	15.0	-167.31	742.4	25.9	1,295.0	1,280.9	14.10	91.844		
3,100.0	3,062.0	2,616.9	2,455.2	10.9	15.7	-167.35	778.5	25.7	1,354.4	1,339.8	14.61	92.719		
3,137.7	3,099.2	2,647.2	2,482.2	11.1	16.0	-167.37	792.1	25.6	1,376.9	1,362.1	14.80	93.031		
3,200.0	3,160.6	2,697.7	2,527.4	11.3	16.4	-167.58	814.8	25.4	1,413.3	1,398.2	15.18	93.111		
3,300.0	3,259.7	2,780.3	2,601.2	11.5	17.1	-167.86	851.9	25.2	1,469.7	1,453.9	15.76	93.239		
3,400.0	3,359.2	2,864.8	2,676.7	11.8	17.8	-168.09	889.9	25.0	1,523.1	1,506.8	16.34	93.218		
3,500.0	3,458.9	2,951.0	2,753.8	11.9	18.6	-168.27	928.6	24.7	1,573.7	1,556.8	16.91	93.075		
3,600.0	3,558.9	3,039.0	2,832.3	12.1	19.3	-168.39	968.1	24.5	1,621.3	1,603.8	17.47	92.826		
3,641.1	3,600.0	3,075.6	2,865.0	12.1	19.7	-4.38	984.5	24.4	1,639.9	1,622.2	17.70	92.665		
3,700.0	3,658.9	3,128.2	2,912.0	12.2	20.1	-4.32	1,008.1	24.3	1,666.3	1,648.3	17.98	92.652		
3,800.0	3,758.9	3,217.5	2,991.9	12.3	20.9	-4.21	1,048.3	24.0	1,711.2	1,692.7	18.46	92.691		
3,900.0	3,858.9	3,306.9	3,071.7	12.4	21.7	-4.11	1,088.4	23.8	1,756.0	1,737.0	18.94	92.715		
4,000.0	3,958.9	3,396.2	3,151.5	12.6	22.4	-4.02	1,128.5	23.5	1,800.8	1,781.4	19.42	92.726		
4,100.0	4,058.9	3,485.6	3,231.4	12.7	23.2	-3.93	1,168.6	23.3	1,845.6	1,825.7	19.90	92.725		
4,200.0	4,158.9	3,574.9	3,311.2	12.8	24.0	-3.84	1,208.7	23.0	1,890.5	1,870.1	20.39	92.714		
4,300.0	4,258.9	3,664.3	3,391.0	13.0	24.8	-3.76	1,248.9	22.8	1,935.3	1,914.4	20.88	92.694		
4,400.0	4,358.9	3,753.6	3,470.9	13.1	25.5	-3.69	1,289.0	22.5	1,980.2	1,958.8	21.37	92.666		
4,500.0	4,458.9	3,843.0	3,550.7	13.2	26.3	-3.61	1,329.1	22.3	2,025.0	2,003.1	21.86	92.631		
4,600.0	4,558.9	3,932.3	3,630.6	13.4	27.1	-3.54	1,369.2	22.0	2,069.9	2,047.5	22.36	92.590		
4,700.0	4,658.9	4,021.7	3,710.4	13.5	27.9	-3.47	1,409.4	21.8	2,114.7	2,091.9	22.85	92.544		
4,800.0	4,758.9	4,111.0	3,790.2	13.6	28.6	-3.41	1,449.5	21.6	2,159.6	2,136.2	23.35	92.493		

CC - Min centre to center distance or convergent point, SF - min separation factor, ES - min ellipse separation

<b>Company:</b>	Synergy Resources	<b>Local Co-ordinate Reference:</b>	Well SRC Aims 43-10D
<b>Project:</b>	SEC.10-T5N-R66W	<b>TVD Reference:</b>	WELL @ 4871.0ft (Original Well Elev)
<b>Reference Site:</b>	SRC Aims/GCC Pad Sec.10-T5N-R66W	<b>MD Reference:</b>	WELL @ 4871.0ft (Original Well Elev)
<b>Site Error:</b>	0.0ft	<b>North Reference:</b>	True
<b>Reference Well:</b>	SRC Aims 43-10D	<b>Survey Calculation Method:</b>	Minimum Curvature
<b>Well Error:</b>	0.0ft	<b>Output errors are at</b>	2.00 sigma
<b>Reference Wellbore</b>	Wellbore #1	<b>Database:</b>	Landmark
<b>Reference Design:</b>	Plan #2 (9-21-11)	<b>Offset TVD Reference:</b>	Offset Datum

Offset Design												Offset Site Error:	0.0ft
Survey Program: 0-MWD												Offset Well Error:	0.0ft
Reference		Offset		Semi Major Axis			Distance						
Measured Depth (ft)	Vertical Depth (ft)	Measured Depth (ft)	Vertical Depth (ft)	Reference (ft)	Offset (ft)	Highside Toolface (°)	Offset Wellbore Centre +N/-S (ft)	+E/-W (ft)	Between Centres (ft)	Between Ellipses (ft)	Minimum Separation (ft)	Separation Factor	Warning
4,900.0	4,858.9	4,200.4	3,870.1	13.8	29.4	-3.35	1,489.6	21.3	2,204.4	2,180.6	23.85	92.438	
5,000.0	4,958.9	4,289.7	3,949.9	13.9	30.2	-3.29	1,529.7	21.1	2,249.3	2,224.9	24.35	92.380	
5,100.0	5,058.9	4,379.1	4,029.7	14.1	31.0	-3.23	1,569.8	20.8	2,294.1	2,269.3	24.85	92.318	
5,200.0	5,158.9	4,468.4	4,109.6	14.2	31.7	-3.17	1,610.0	20.6	2,339.0	2,313.6	25.35	92.254	
5,300.0	5,258.9	4,557.8	4,189.4	14.4	32.5	-3.12	1,650.1	20.3	2,383.9	2,358.0	25.86	92.188	
5,400.0	5,358.9	4,647.1	4,269.2	14.5	33.3	-3.07	1,690.2	20.1	2,428.7	2,402.4	26.36	92.120	
5,500.0	5,458.9	4,736.5	4,349.1	14.7	34.1	-3.02	1,730.3	19.8	2,473.6	2,446.7	26.87	92.050	
5,600.0	5,558.9	4,825.9	4,428.9	14.9	34.9	-2.97	1,770.5	19.6	2,518.5	2,491.1	27.38	91.979	
5,700.0	5,658.9	4,915.2	4,508.7	15.0	35.6	-2.93	1,810.6	19.3	2,563.3	2,535.4	27.89	91.908	
5,800.0	5,758.9	5,004.6	4,588.6	15.2	36.4	-2.88	1,850.7	19.1	2,608.2	2,579.8	28.40	91.835	
5,900.0	5,858.9	5,093.9	4,668.4	15.3	37.2	-2.84	1,890.8	18.9	2,653.1	2,624.1	28.91	91.761	
6,000.0	5,958.9	5,183.3	4,748.2	15.5	38.0	-2.80	1,931.0	18.6	2,697.9	2,668.5	29.43	91.687	
6,100.0	6,058.9	5,272.6	4,828.0	15.7	38.8	-2.76	1,971.1	18.4	2,742.8	2,713.4	29.94	91.613	
6,200.0	6,158.9	5,361.9	4,907.8	15.8	39.6	-2.72	2,011.2	18.2	2,787.7	2,758.3	30.45	91.539	
6,300.0	6,258.9	5,451.2	4,987.6	16.0	40.4	-2.68	2,051.3	18.0	2,832.6	2,803.2	30.96	91.465	
6,400.0	6,358.9	5,540.5	5,067.4	16.2	41.2	-2.64	2,091.4	17.8	2,877.5	2,848.1	31.47	91.391	
6,500.0	6,458.9	5,629.8	5,147.2	16.3	42.0	-2.60	2,131.5	17.6	2,922.4	2,893.0	31.98	91.317	
6,600.0	6,558.9	5,719.1	5,227.0	16.5	42.8	-2.56	2,171.6	17.4	2,967.3	2,937.9	32.49	91.243	
6,700.0	6,658.9	5,808.4	5,306.8	16.7	43.6	-2.52	2,211.7	17.2	3,012.2	2,982.8	33.00	91.169	
6,800.0	6,758.9	5,897.7	5,386.6	16.9	44.4	-2.48	2,251.8	17.0	3,057.1	3,027.7	33.51	91.095	
6,900.0	6,858.9	5,987.0	5,466.4	17.0	45.2	-2.44	2,291.9	16.8	3,102.0	3,072.6	34.02	91.021	
7,000.0	6,958.9	6,076.3	5,546.2	17.2	46.0	-2.40	2,332.0	16.6	3,146.9	3,117.5	34.53	90.947	
7,100.0	7,058.9	6,165.6	5,626.0	17.4	46.8	-2.36	2,372.1	16.4	3,191.8	3,162.4	35.04	90.873	
7,200.0	7,158.9	6,254.9	5,705.8	17.6	47.6	-2.32	2,412.2	16.2	3,236.7	3,207.3	35.55	90.799	
7,300.0	7,258.9	6,344.2	5,785.6	17.8	48.4	-2.28	2,452.3	16.0	3,281.6	3,252.2	36.06	90.725	
7,400.0	7,358.9	6,433.5	5,865.4	17.9	49.2	-2.24	2,492.4	15.8	3,326.5	3,297.1	36.57	90.651	
7,500.0	7,458.9	6,522.8	5,945.2	18.1	50.0	-2.20	2,532.5	15.6	3,371.4	3,342.0	37.08	90.577	
7,600.0	7,558.9	6,612.1	6,025.0	18.3	50.8	-2.16	2,572.6	15.4	3,416.3	3,386.9	37.59	90.503	
7,700.0	7,658.9	6,701.4	6,104.8	18.5	51.6	-2.12	2,612.7	15.2	3,461.2	3,431.8	38.10	90.429	
7,800.0	7,758.9	6,790.7	6,184.6	18.7	52.4	-2.08	2,652.8	15.0	3,506.1	3,476.7	38.61	90.355	
7,900.0	7,858.9	6,880.0	6,264.4	18.9	53.2	-2.04	2,692.9	14.8	3,551.0	3,521.6	39.12	90.281	
8,006.1	7,965.0	6,969.3	6,344.2	19.1	54.0	-2.00	2,733.0	14.6	3,595.9	3,566.5	39.63	90.207	

**Company:** Synergy Resources  
**Project:** SEC.10-T5N-R66W  
**Reference Site:** SRC Aims/GCC Pad Sec.10-T5N-R66W  
**Site Error:** 0.0ft  
**Reference Well:** SRC Aims 43-10D  
**Well Error:** 0.0ft  
**Reference Wellbore:** Wellbore #1  
**Reference Design:** Plan #2 (9-21-11)

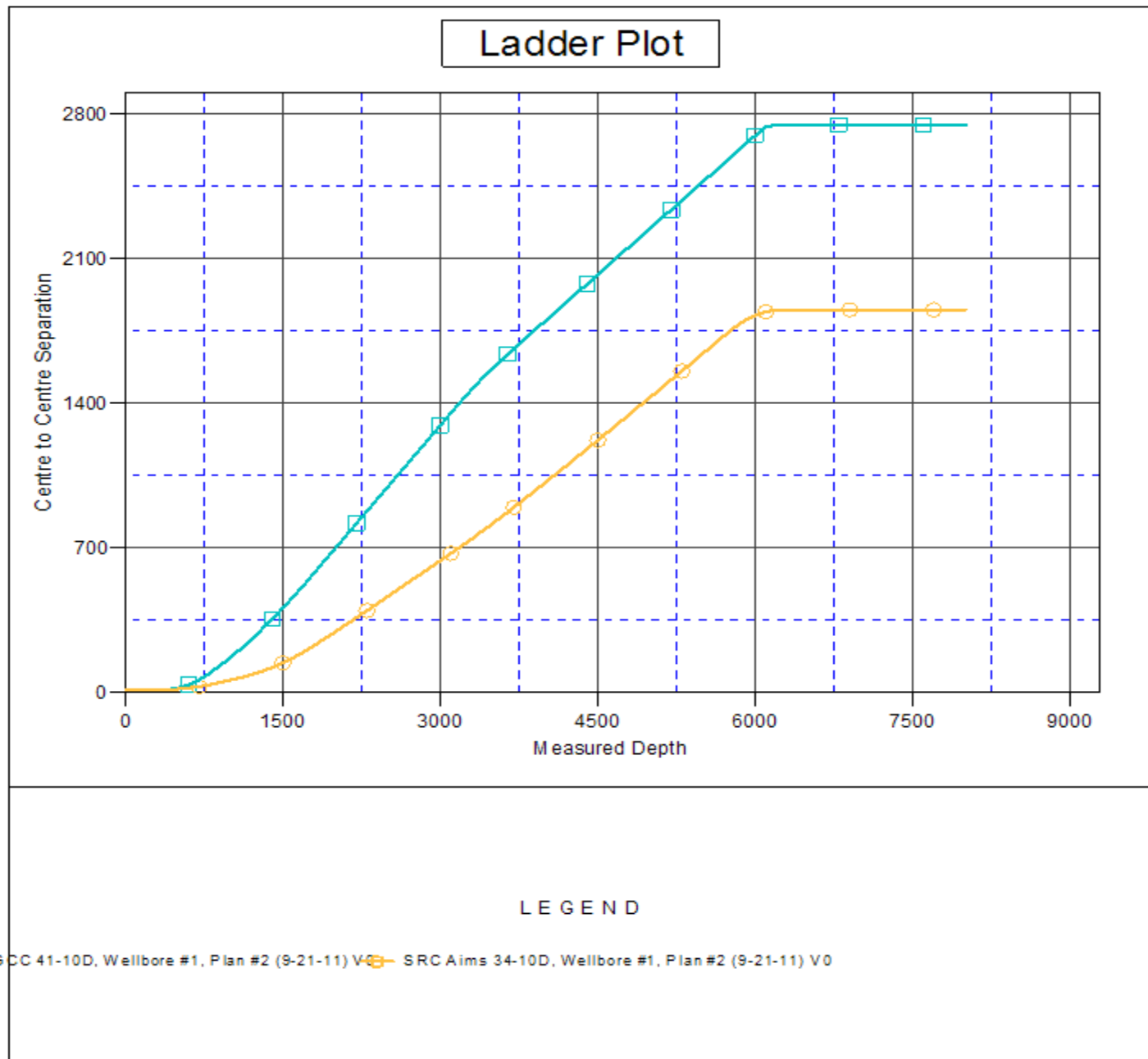
**Local Co-ordinate Reference:** Well SRC Aims 43-10D  
**TVD Reference:** WELL @ 4871.0ft (Original Well Elev)  
**MD Reference:** WELL @ 4871.0ft (Original Well Elev)  
**North Reference:** True  
**Survey Calculation Method:** Minimum Curvature  
**Output errors are at** 2.00 sigma  
**Database:** Landmark  
**Offset TVD Reference:** Offset Datum

Reference Depths are relative to WELL @ 4871.0ft (Original Well Elev) Coordinates are relative to: SRC Aims 43-10D

Offset Depths are relative to Offset Datum

Coordinate System is US State Plane 1983, Wyoming Western Zone

Grid Convergence at Surface is: 3.46°



<b>Company:</b>	Synergy Resources	<b>Local Co-ordinate Reference:</b>	Well SRC Aims 43-10D
<b>Project:</b>	SEC.10-T5N-R66W	<b>TVD Reference:</b>	WELL @ 4871.0ft (Original Well Elev)
<b>Reference Site:</b>	SRC Aims/GCC Pad Sec.10-T5N-R66W	<b>MD Reference:</b>	WELL @ 4871.0ft (Original Well Elev)
<b>Site Error:</b>	0.0ft	<b>North Reference:</b>	True
<b>Reference Well:</b>	SRC Aims 43-10D	<b>Survey Calculation Method:</b>	Minimum Curvature
<b>Well Error:</b>	0.0ft	<b>Output errors are at</b>	2.00 sigma
<b>Reference Wellbore</b>	Wellbore #1	<b>Database:</b>	Landmark
<b>Reference Design:</b>	Plan #2 (9-21-11)	<b>Offset TVD Reference:</b>	Offset Datum

Reference Depths are relative to WELL @ 4871.0ft (Original Well Elev) Coordinates are relative to: SRC Aims 43-10D  
Offset Depths are relative to Offset Datum Coordinate System is US State Plane 1983, Wyoming Western Zone  
Central Meridian is -110.083333 ° Grid Convergence at Surface is: 3.46°

