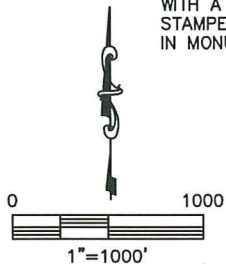
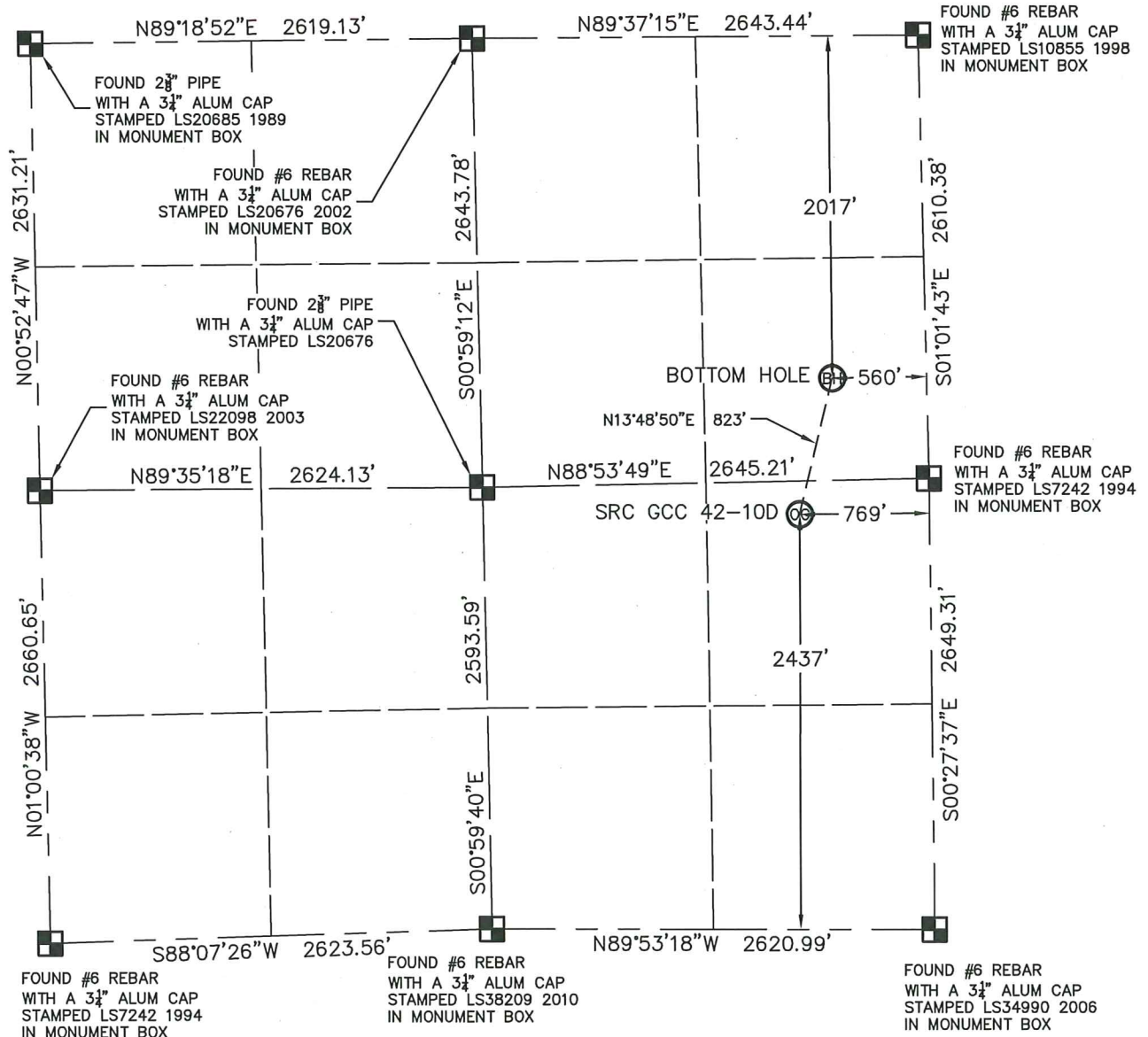


WELL LOCATION CERTIFICATE

SRC GCC 42-10D

THIS MAP DOES NOT REPRESENT A BOUNDARY SURVEY

SECTION: 10
TOWNSHIP: 5N
RANGE: 66W

In accordance with a request from CRAIG RASMUSON with SYNERGY RESOURCES CORPORATION King Surveyors Inc. has determined the surface location of SRC GCC 42-10D to be 2437' from the SOUTH line and 769' from the EAST line and the bottom hole to be 2017' from the NORTH line and 560' from the EAST line, as measured at right angles, from the section lines of Section 10, Township 5 North, Range 66 West of the Sixth Principal Meridian, County of Weld, State of Colorado.

I hereby state that this Well Location Certificate was prepared by me, or under my direct supervision, that the fieldwork was completed on 9-14-2011, for and on behalf of SYNERGY RESOURCES CORPORATION. That this is not a Land Survey Plat or an Improvement Survey Plat, and that it is not to be relied upon for establishment of fence, building, or other future improvement lines.

NOTE:

- 1) Bearings shown are Grid Bearings of the Colorado State Plane Coordinate System, North Zone, North American Datum 1983/2007. The lineal dimensions as contained herein are based upon the "U.S. Survey Foot."
- 2) Ground elevations are based on an observed GPS elevation (NAVD 1988 DATUM).
- 3) NEAREST EXISTING WELL: NO EXISTING WELLS IN THIS SECTION
- 4) IMPROVEMENTS: See LOCATION DRAWING exhibit for all visible improvements within 400' of disturbed area.
- 5) SURFACE USE: OPEN FIELD
- 6) FIELD OPERATOR: CHAD DILKA

SURFACE LOCATION
LATITUDE: 40.41358°N
LONGITUDE: 104.75905°W
PDOP: 1.7
ELEV: 4858'
1/4, 1/4: NE 1/4 SE 1/4
NEAREST PROPERTY LINE: 196' NORTH

BOTTOM HOLE
LATITUDE: 40.41577°N
LONGITUDE: 104.75832°W

LEGEND

- = FOUND ALIQUOT MONUMENT AS DESCRIBED
- = CALCULATED POSITION
- = SET ALIQUOT MONUMENT AS DESCRIBED

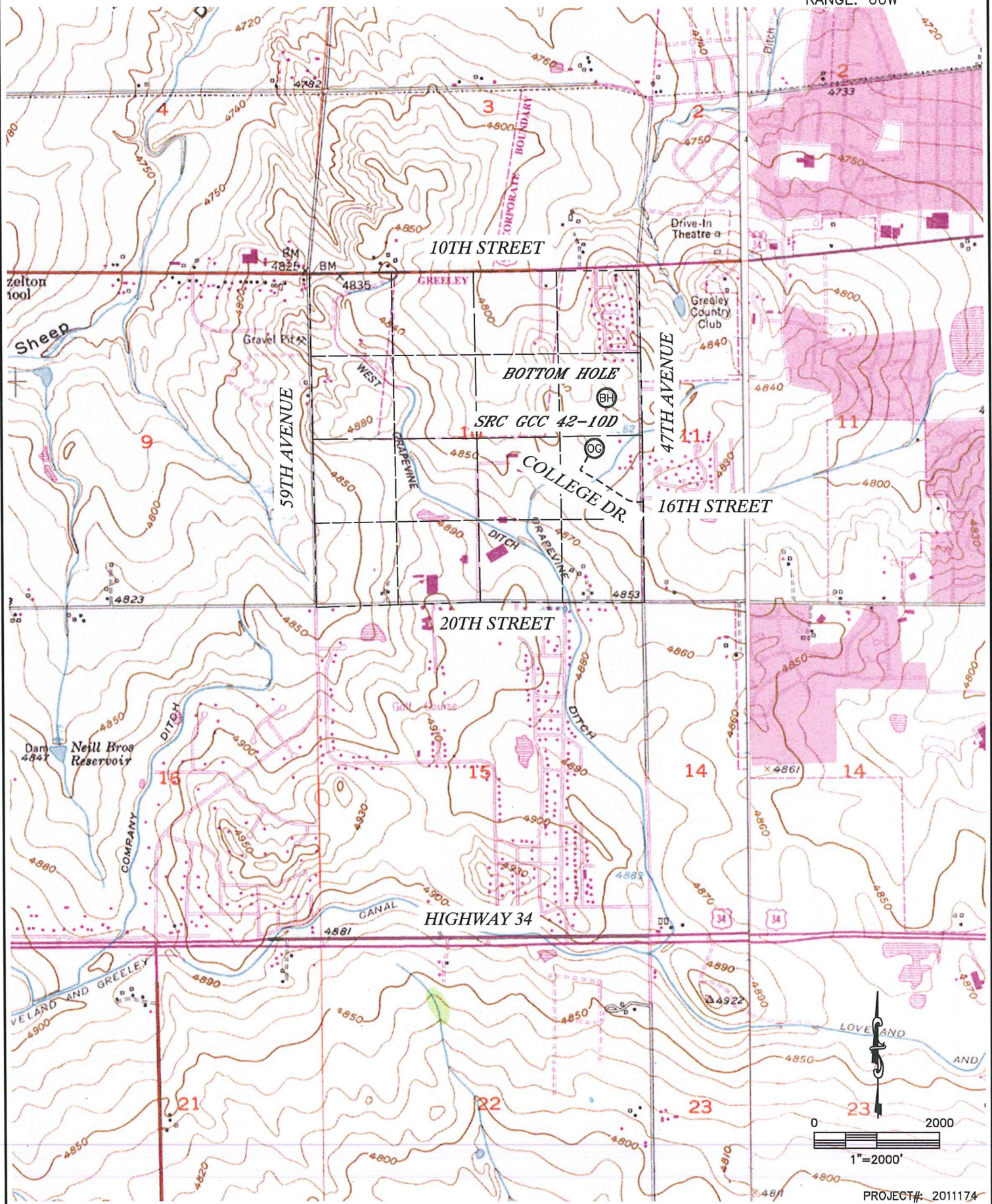
NOTE

According to Colorado law, you must commence any legal action based upon any defect in this W.L.C. within three years after you discover such defect. In no event, may any action based upon any defect in this survey be commenced more than ten years after the date of the certificate shown hereon. (13-80-105 C.R.S.)

Michael Chad Dilka - On Behalf Of King Surveyors, Inc.
Colorado Licensed Professional Land Surveyor #38106

PROJECT#: 2011174

SECTION: 10
TOWNSHIP: 5N
RANGE: 66W

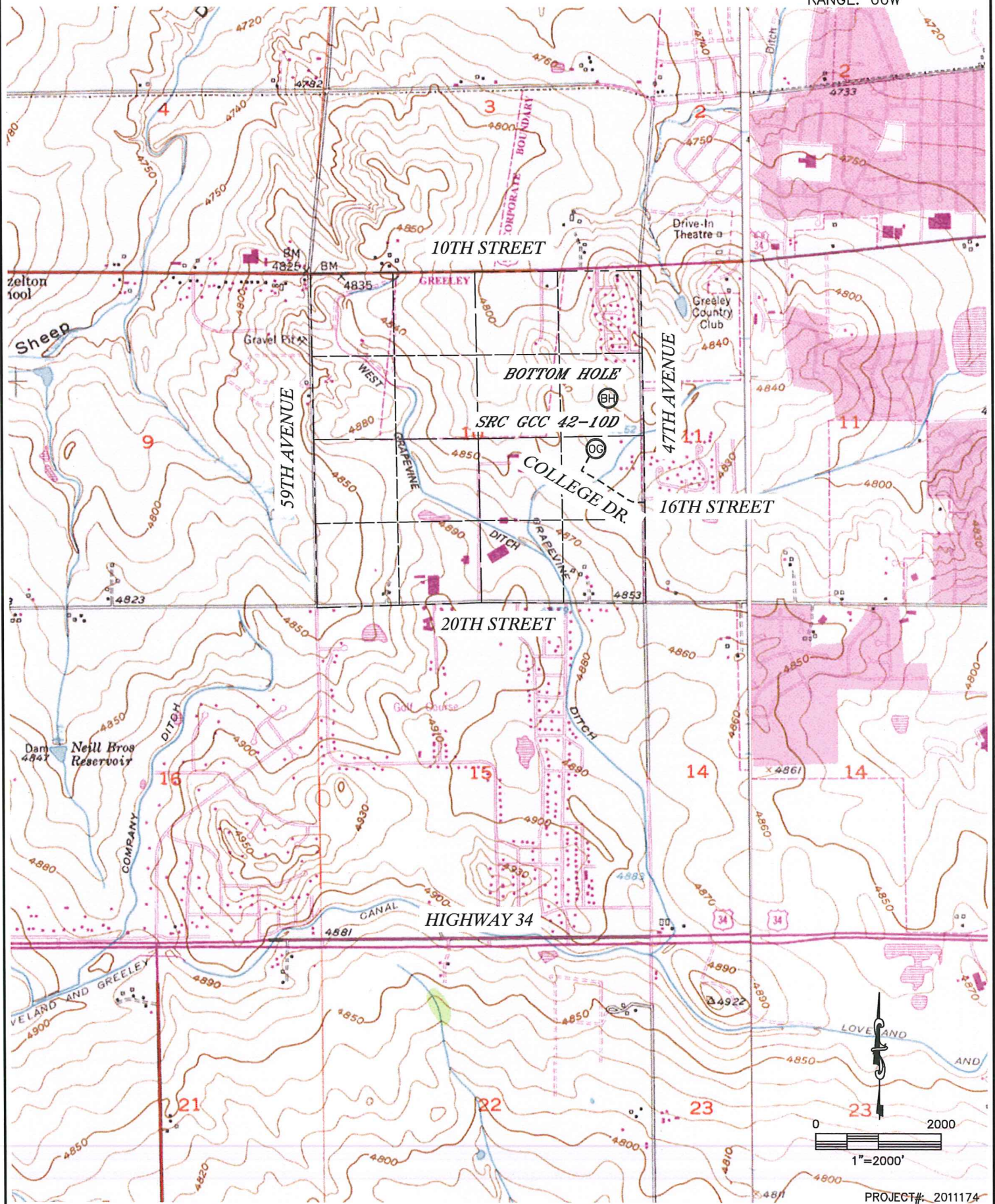


KING SURVEYORS, INC. 650 E. GARDEN DR. WINDSOR, CO 80550

TOPOGRAPHIC MAP

SRC GCC 42-10D

SECTION: 10
TOWNSHIP: 5N
RANGE: 66W



LOCATION DRAWING

SRC GCC 42-10D

SECTION: 10
TOWNSHIP: 5N
RANGE: 66W



- (A) PROPERTY LINE 196'N, 303'E, 426'SE
- (B) OVERHEAD UTILITY LINE 186'N, 305'E
- (C) FENCE 198'N, 304'E, 519'SW, 586'NW
- (D) WATERLINE 103'NW, 209'NW, 208'SW, 224'SW
- (E) BLOWOFF 230'SW, 269'SW, 304'SW, 435'SE
- (F) WATER MANHOLE 317'SW, 404'SW
- (G) WATER VALVE 397'SW, 417'SW, 432'SE
- (H) ANTENNA 310'SW
- (I) ELECTRIC METER 318'SW
- (J) IRRIGATION CONTROL BOX 502'SW
- (K) BOLLARD 473'SW, 485'S
- (L) AIMS SIGN 515'SW
- (M) LIGHT POLE 423'SW
- (N) NE EDGE ASPHALT ROAD 398'SW
- (O) E EDGE FIELD ROAD 412'W

- (P) N EDGE DITCH ROAD 405'S
- (Q) NW EDGE IRRIGATION DITCH 377'SE, 412'S
- (R) CONCRETE IRRIGATION STRUCTURE 480'SW, 455'S
- (S) HOUSE 646'NW, 694'NW, 407'E, 570'E, 624'SE, 621'SE, 540'SE
- (T) GARAGE 586'SE
- (U) BARN/SHED 326'E, 462'SE, 581'SE, 613'SE, 545'SE, 665'NW
- (V) PUTTING GREEN 250'N, 437'NW
- (W) SAND TRAP 330'N, 406'NW, 526'NW
- (X) SW SIDE WATER HAZARD 470'NE
- (Y) TEE BOX 454'NE, 569'NW, 579'NW
- (Z) CART PATH 376'NE, 550'NW, 517'NW, 607'NW
- (AA) S EDGE FAIRWAY 229'N, 382'NW
- (BB) TELEPHONE PEDESTAL 590'NW, 717'NE
- (CC) WATER METER 418'SE, 447'SE
- (DD) CONCRETE MANHOLE 394' NE

NEAREST:
BUILDING=326' E
PUBLIC ROAD=398' SW
ABOVE GND UTILITY=186' N
RAILROAD=5280'+
PROPERTY LINE= 196' N

SRC GCC 42-10D

[illegible]

PROJECT#: 2011174

SRC GCC 42-10D
TOWNSHIP 5 NORTH, RANGE 66 WEST
SECTION 10: NE1/4SE1/4
WELD COUNTY, COLORADO

WELL FACING NORTH
PICTURE DATED: 9/14/2011



WELL FACING SOUTH
PICTURE DATED: 9/14/2011



SRC GCC 42-10D
TOWNSHIP 5 NORTH, RANGE 66 WEST
SECTION 10: NE1/4SE1/4
WELD COUNTY, COLORADO

WELL FACING EAST
PICTURE DATED: 9/14/2011



WELL FACING WEST
PICTURE DATED: 9/14/2011



SRC GCC 42-10D
TOWNSHIP 5 NORTH, RANGE 66 WEST
SECTION 10: NE1/4SE1/4
WELD COUNTY, COLORADO

REFERENCE AREA FACING WEST
PICTURE DATED: 9/14/2011

