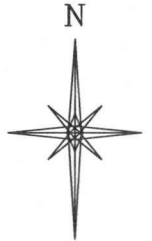
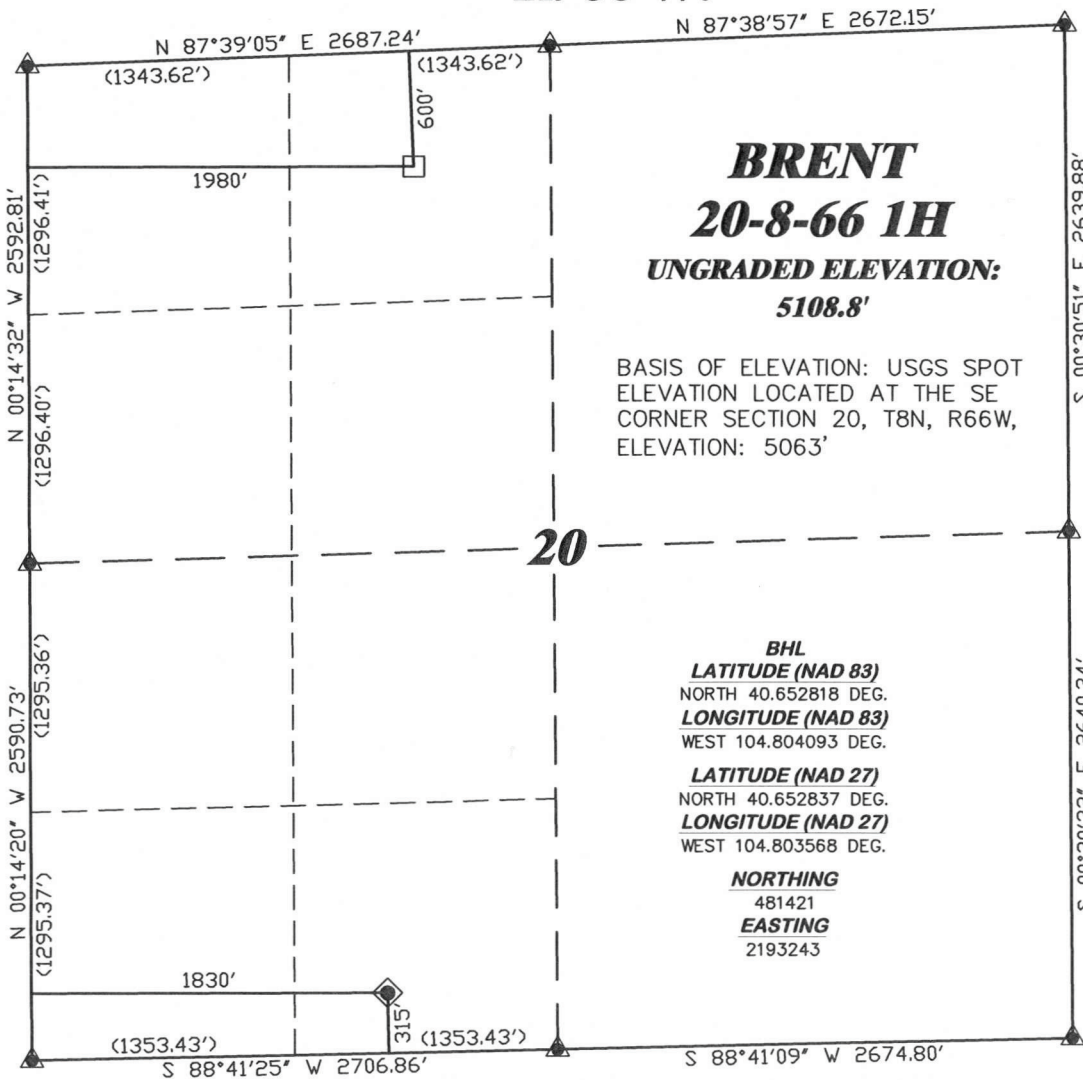


R. 66 W.



SCALE 1" = 1000'

T. 8 N.



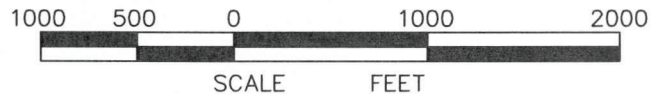
BRENT
20-8-66 1H
UNGRADED ELEVATION:
5108.8'

BASIS OF ELEVATION: USGS SPOT
 ELEVATION LOCATED AT THE SE
 CORNER SECTION 20, T8N, R66W,
 ELEVATION: 5063'

BHL
LATITUDE (NAD 83)
 NORTH 40.652818 DEG.
LONGITUDE (NAD 83)
 WEST 104.804093 DEG.
LATITUDE (NAD 27)
 NORTH 40.652837 DEG.
LONGITUDE (NAD 27)
 WEST 104.803568 DEG.

NORTHING
 481421
EASTING
 2193243

LATITUDE (NAD 83)
 NORTH 40.640998 DEG.
LONGITUDE (NAD 83)
 WEST 104.804690 DEG.
LATITUDE (NAD 27)
 NORTH 40.641017 DEG.
LONGITUDE (NAD 27)
 WEST 104.804165 DEG.
NORTHING
 477114.05
EASTING
 2193111.43
BASIS OF BEARING/DATUM
 SPCS CO CENTRAL NAD 27
 BASED ON NGS TRIANGULATION
 POINT "CP 20 8 66"



NOTES

PRIARIE LANDS
 EXISTING COUNTY ROAD
 AND POWER LINE WITHIN
 400' RADIUS OF WELL SITE.

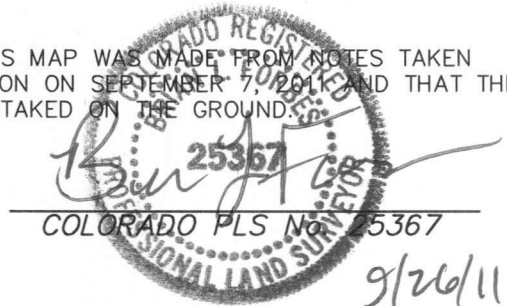
GPS OPERATOR PAUL ORME
 OBSERVED A PDOP OF 1.8.
 ALL GPS OBSERVATIONS ARE IN
 COMPLIANCE WITH COGCC RULE No.215.

SURVEYOR'S STATEMENT

I, BRAIN L. FORBES, OF ROCK SPRINGS, WYOMING, HEREBY STATE: THIS MAP WAS MADE FROM NOTES TAKEN DURING AN ACTUAL FIELD SURVEY DONE UNDER MY DIRECT SUPERVISION ON SEPTEMBER 7, 2011 AND THAT THIS PLAT CORRECTLY SHOWS THE LOCATION OF BRENT 20-8-66 1H AS STAKED ON THE GROUND.

LEGEND

- ◆ WELL LOCATION
- BOTTOM HOLE LOC. (APPROX)
- FOUND MONUMENT
- ▲ PREVIOUSLY FOUND MONUMENT



DRG RIFFIN & ASSOCIATES, INC.
 (307) 362-5028 1414 ELK ST., ROCK SPRINGS, WY 82901

**PLAT OF DRILLING LOCATION
 FOR
 CHESAPEAKE ENERGY LLC.**

DRAWN: 9/26/11 - JMB	SCALE: 1" = 1000'
REVISED: NA	DRG JOB No. 18785
	EXHIBIT 1

**315' F/SL & 1830' F/WL, SESW, SECTION 20,
 T. 8 N., R. 66 W., 6th P.M.
 WELD COUNTY, COLORADO**