



# **EOG Resources, Inc - RM**

**Weld County, CO**

**Sec. 19, T11N, R63W, 6th P.M.**

**Critter Creek #15-19H**

**Wellbore #1**

**Survey: Critter Creek #15-19H - MWD Surveys**

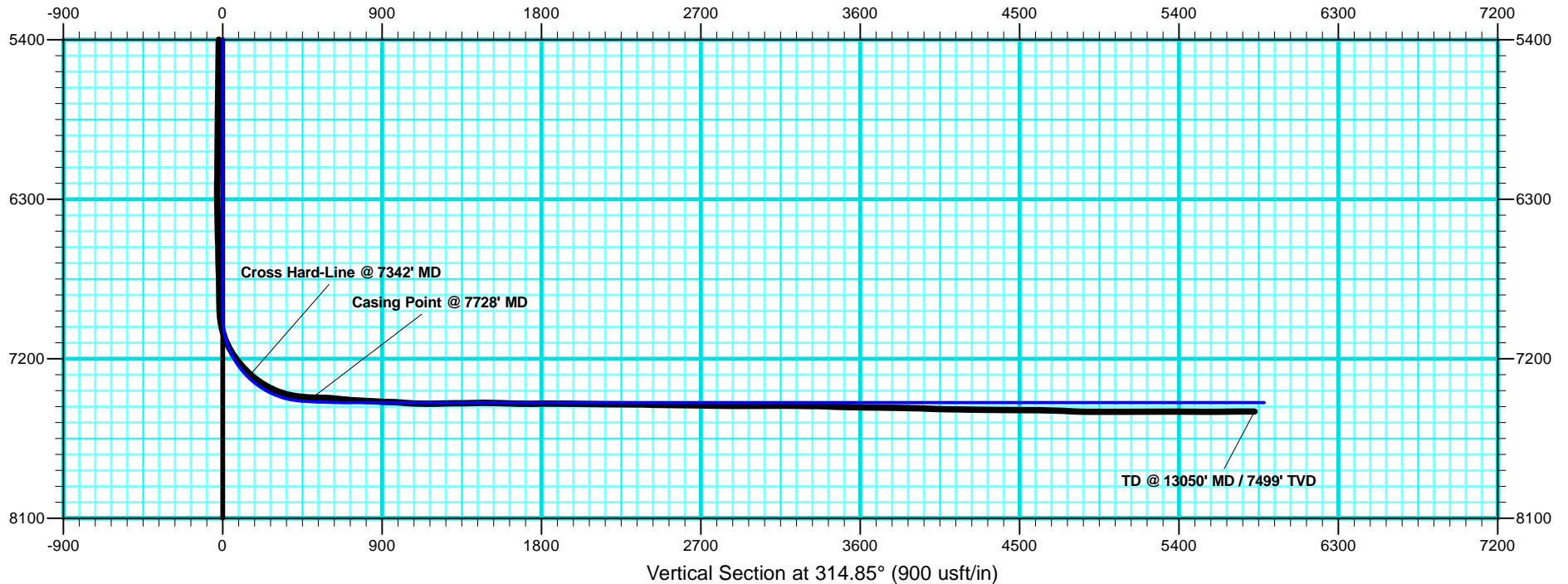
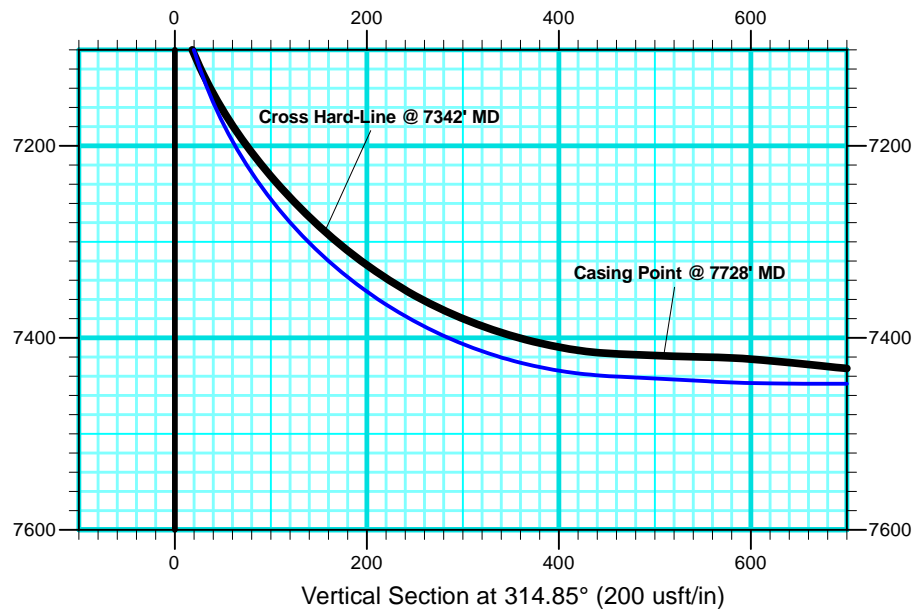
## **DDC Survey Report**

**01 March, 2011**

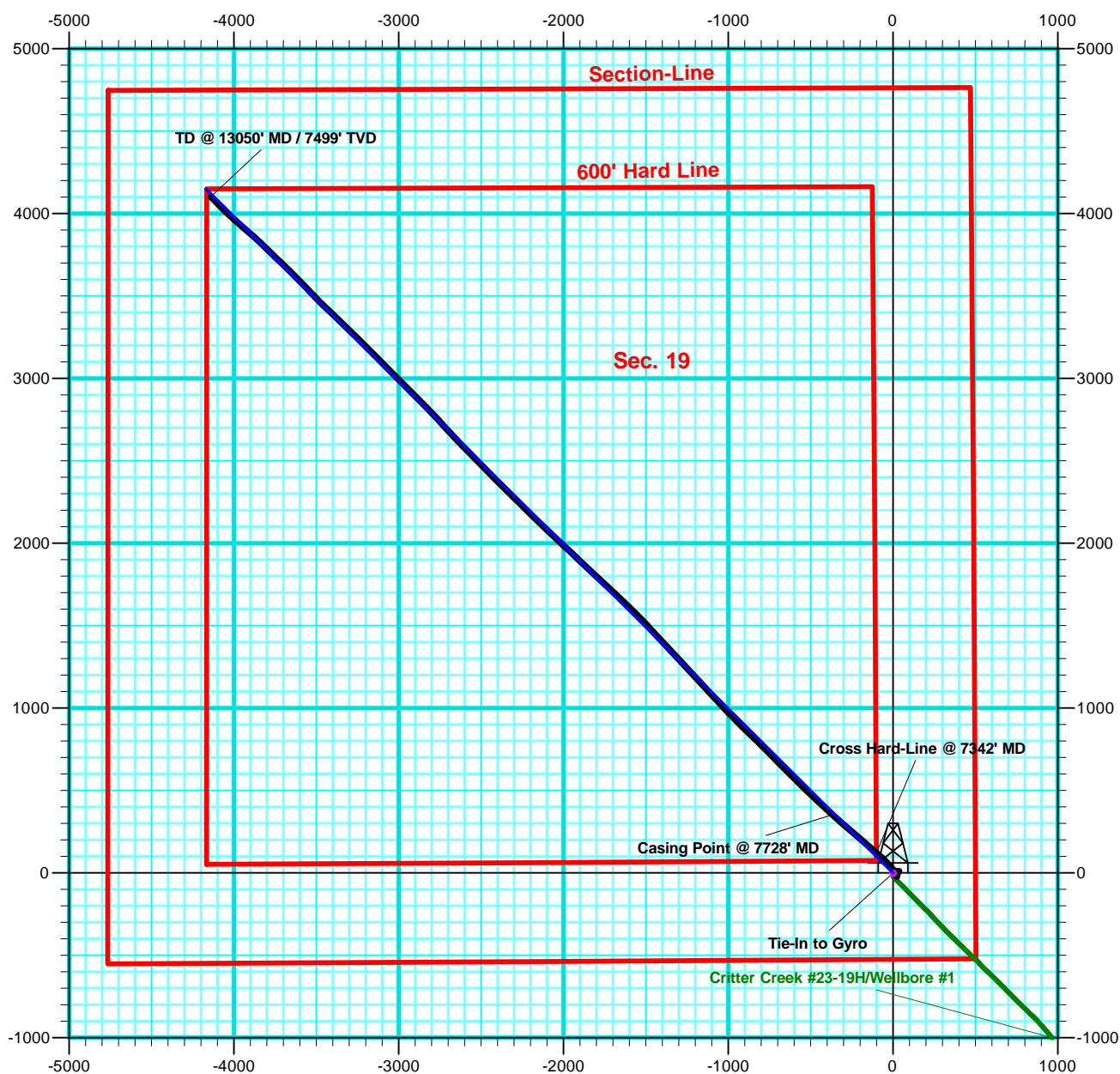




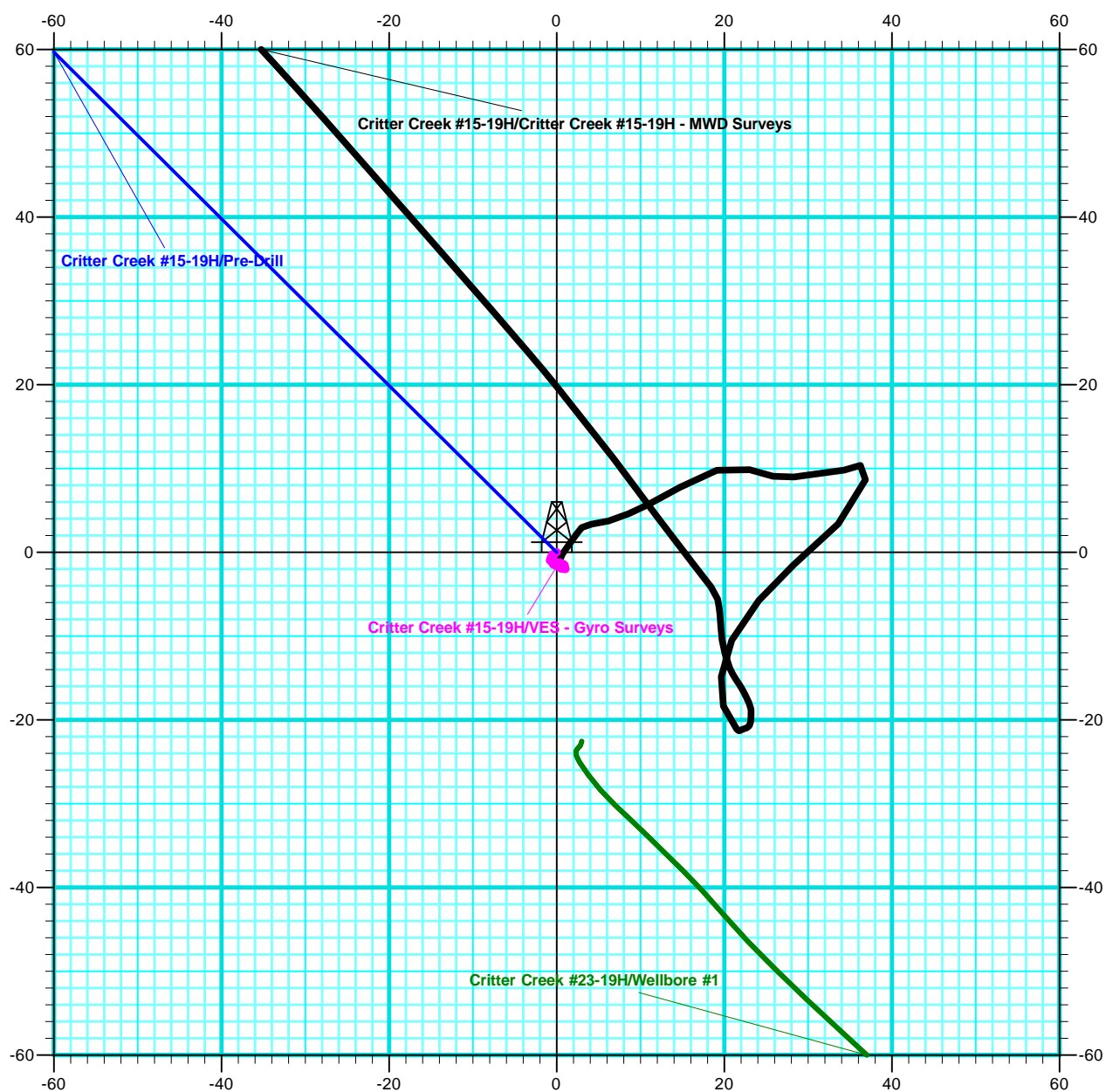
**Weld County, CO**  
**Sec. 19, T11N, R63W, 6th P.M.**  
**Critter Creek #15-19H**  
**Wellbore #1**  
**Pre-Drill**



**Weld County, CO  
Sec. 19, T11N, R63W, 6th P.M.  
Critter Creek #15-19H  
Wellbore #1  
Pre-Drill**



**Weld County, CO  
Sec. 19, T11N, R63W, 6th P.M.  
Crittter Creek #15-19H  
Wellbore #1  
Pre-Drill**



<b>Company:</b>	EOG Resources, Inc - RM	<b>Local Co-ordinate Reference:</b>	Well Critter Creek #15-19H
<b>Project:</b>	Weld County, CO	<b>TVD Reference:</b>	WELL @ 5312.0usft (SST #53)
<b>Site:</b>	Sec. 19, T11N, R63W, 6th P.M.	<b>MD Reference:</b>	WELL @ 5312.0usft (SST #53)
<b>Well:</b>	Critter Creek #15-19H	<b>North Reference:</b>	True
<b>Wellbore:</b>	Wellbore #1	<b>Survey Calculation Method:</b>	Minimum Curvature
<b>Design:</b>	Wellbore #1	<b>Database:</b>	EDM 5000.1 Single User Db

<b>Project</b>	Weld County, CO		
<b>Map System:</b>	US State Plane 1927 (Exact solution)	<b>System Datum:</b>	Mean Sea Level
<b>Geo Datum:</b>	NAD 1927 (NADCON CONUS)		
<b>Map Zone:</b>	Colorado North 501		

<b>Site</b>	Sec. 19, T11N, R63W, 6th P.M.		
<b>Site Position:</b>		<b>Northing:</b>	573,082.11 usft
<b>From:</b>	Lat/Long	<b>Easting:</b>	2,285,413.15 usft
<b>Position Uncertainty:</b>	0.0 usft	<b>Slot Radius:</b>	13-3/16 "
		<b>Latitude:</b>	40° 54' 7.010 N
		<b>Longitude:</b>	104° 28' 3.270 W
		<b>Grid Convergence:</b>	0.67 °

<b>Well</b>	Critter Creek #15-19H		
<b>Well Position</b>	<b>+N-S</b>	0.0 usft	<b>Northing:</b> 573,105.38 usft
	<b>+E-W</b>	0.0 usft	<b>Easting:</b> 2,285,412.87 usft
<b>Position Uncertainty</b>	0.0 usft	<b>Wellhead Elevation:</b>	usft
		<b>Latitude:</b>	40° 54' 7.240 N
		<b>Longitude:</b>	104° 28' 3.270 W
		<b>Ground Level:</b>	5,289.0 usft

<b>Wellbore</b>	Wellbore #1				
<b>Magnetics</b>	<b>Model Name</b>	<b>Sample Date</b>	<b>Declination (°)</b>	<b>Dip Angle (°)</b>	<b>Field Strength (nT)</b>
	IGRF2010	1/10/2011	8.81	67.52	53,466

<b>Design</b>	Wellbore #1				
<b>Audit Notes:</b>					
<b>Version:</b>	1.0	<b>Phase:</b>	ACTUAL	<b>Tie On Depth:</b>	0.0
<b>Vertical Section:</b>	<b>Depth From (TVD) (usft)</b>	<b>+N-S (usft)</b>	<b>+E-W (usft)</b>	<b>Direction (°)</b>	
	0.0	0.0	0.0	314.85	

<b>Survey Program</b>	<b>Date</b>	3/1/2011			
<b>From (usft)</b>	<b>To (usft)</b>	<b>Survey (Wellbore)</b>	<b>Tool Name</b>	<b>Description</b>	
123.0	1,435.0	VES - Gyro Surveys (Wellbore #1)	MWD default	MWD - Standard	
1,514.0	13,050.0	Critter Creek #15-19H - MWD Surveys (W	MWD default	MWD - Standard	

<b>Survey</b>										
<b>Measured Depth (usft)</b>	<b>Inclination (°)</b>	<b>Azimuth (°)</b>	<b>Vertical Depth (usft)</b>	<b>+N-S (usft)</b>	<b>+E-W (usft)</b>	<b>Vertical Section (usft)</b>	<b>Dogleg Rate (°/100usft)</b>	<b>Build Rate (°/100usft)</b>	<b>Turn Rate (°/100usft)</b>	
<b>Tie-In to Gyro</b>										
1,435.0	0.14	175.28	1,435.0	-1.4	0.2	-1.1	0.00	0.00	0.00	
1,514.0	0.60	12.90	1,514.0	-1.0	0.3	-1.0	0.93	0.58	-205.56	
1,607.0	0.60	36.80	1,607.0	-0.2	0.7	-0.6	0.27	0.00	25.70	
1,700.0	1.00	34.50	1,700.0	0.9	1.5	-0.4	0.43	0.43	-2.47	
1,793.0	0.90	36.60	1,792.9	2.1	2.3	-0.2	0.11	-0.11	2.26	
1,885.0	0.40	41.90	1,884.9	3.0	3.0	0.0	0.55	-0.54	5.76	
2,009.0	0.80	84.60	2,008.9	3.4	4.1	-0.6	0.46	0.32	34.44	
2,135.0	1.10	76.30	2,134.9	3.7	6.2	-1.8	0.26	0.24	-6.59	
2,263.0	1.20	63.50	2,262.9	4.6	8.6	-2.8	0.21	0.08	-10.00	

<b>Company:</b>	EOG Resources, Inc - RM	<b>Local Co-ordinate Reference:</b>	Well Critter Creek #15-19H
<b>Project:</b>	Weld County, CO	<b>TVD Reference:</b>	WELL @ 5312.0usft (SST #53)
<b>Site:</b>	Sec. 19, T11N, R63W, 6th P.M.	<b>MD Reference:</b>	WELL @ 5312.0usft (SST #53)
<b>Well:</b>	Critter Creek #15-19H	<b>North Reference:</b>	True
<b>Wellbore:</b>	Wellbore #1	<b>Survey Calculation Method:</b>	Minimum Curvature
<b>Design:</b>	Wellbore #1	<b>Database:</b>	EDM 5000.1 Single User Db

**Survey**

Measured Depth (usft)	Inclination (°)	Azimuth (°)	Vertical Depth (usft)	+N/-S (usft)	+E/-W (usft)	Vertical Section (usft)	Dogleg Rate (°/100usft)	Build Rate (°/100usft)	Turn Rate (°/100usft)
2,390.0	1.00	67.40	2,389.9	5.6	10.8	-3.7	0.17	-0.16	3.07
2,614.0	1.30	57.20	2,613.8	7.8	14.7	-5.0	0.16	0.13	-4.55
2,837.0	1.20	73.80	2,836.8	9.8	19.1	-6.6	0.17	-0.04	7.44
3,061.0	0.90	109.70	3,060.7	9.8	23.0	-9.4	0.32	-0.13	16.03
3,284.0	0.60	99.30	3,283.7	9.1	25.8	-11.9	0.15	-0.13	-4.66
3,506.0	0.70	85.10	3,505.7	9.0	28.3	-13.7	0.09	0.05	-6.40
3,731.0	0.80	80.00	3,730.7	9.4	31.2	-15.5	0.05	0.04	-2.27
3,952.0	0.80	84.00	3,951.7	9.8	34.3	-17.4	0.03	0.00	1.81
4,173.0	0.30	46.50	4,172.6	10.4	36.2	-18.4	0.27	-0.23	-16.97
4,395.0	1.10	174.90	4,394.6	8.7	36.9	-20.0	0.59	0.36	57.84
4,618.0	2.40	227.80	4,617.5	3.4	33.6	-21.4	0.87	0.58	23.72
4,841.0	1.30	226.90	4,840.4	-1.5	28.3	-21.1	0.49	-0.49	-0.40
5,095.0	1.40	221.60	5,094.3	-5.8	24.1	-21.2	0.06	0.04	-2.09
5,349.0	1.20	206.00	5,348.3	-10.5	20.9	-22.2	0.16	-0.08	-6.14
5,602.0	0.90	182.30	5,601.2	-14.8	19.6	-24.4	0.21	-0.12	-9.37
5,856.0	0.70	168.00	5,855.2	-18.4	19.9	-27.1	0.11	-0.08	-5.63
6,110.0	0.80	134.40	6,109.2	-21.1	21.5	-30.1	0.17	0.04	-13.23
6,142.0	0.30	104.30	6,141.2	-21.3	21.7	-30.4	1.75	-1.56	-94.06
6,174.0	0.40	65.80	6,173.2	-21.3	21.9	-30.5	0.78	0.31	-120.31
6,205.0	0.50	60.90	6,204.2	-21.2	22.1	-30.6	0.35	0.32	-15.81
6,237.0	0.60	76.70	6,236.2	-21.1	22.4	-30.7	0.56	0.31	49.38
6,269.0	0.50	61.30	6,268.2	-20.9	22.7	-30.9	0.56	-0.31	-48.13
6,301.0	0.90	42.00	6,300.2	-20.7	23.0	-30.9	1.43	1.25	-60.31
6,333.0	1.00	1.30	6,332.2	-20.2	23.2	-30.7	2.09	0.31	-127.19
6,365.0	1.40	3.70	6,364.2	-19.6	23.2	-30.2	1.26	1.25	7.50
6,397.0	1.50	355.50	6,396.2	-18.8	23.2	-29.7	0.72	0.31	-25.63
6,429.0	1.50	331.70	6,428.2	-18.0	22.9	-28.9	1.93	0.00	-74.38
6,461.0	1.50	336.00	6,460.1	-17.2	22.6	-28.1	0.35	0.00	13.44
6,492.0	1.60	331.70	6,491.1	-16.5	22.2	-27.4	0.49	0.32	-13.87
6,524.0	1.40	323.70	6,523.1	-15.8	21.8	-26.5	0.90	-0.63	-25.00
6,555.0	1.30	328.90	6,554.1	-15.1	21.4	-25.8	0.51	-0.32	16.77
6,587.0	1.30	330.80	6,586.1	-14.5	21.0	-25.1	0.13	0.00	5.94
6,618.0	1.70	337.10	6,617.1	-13.8	20.6	-24.4	1.39	1.29	20.32
6,682.0	1.60	347.10	6,681.1	-12.0	20.1	-22.7	0.48	-0.16	15.63
6,745.0	1.30	349.60	6,744.1	-10.5	19.8	-21.4	0.49	-0.48	3.97
6,809.0	1.50	357.90	6,808.0	-8.9	19.6	-20.2	0.44	0.31	12.97
6,872.0	1.40	352.90	6,871.0	-7.3	19.5	-19.0	0.26	-0.16	-7.94
6,901.0	1.80	353.00	6,900.0	-6.5	19.4	-18.3	1.38	1.38	0.34
6,932.0	1.80	348.10	6,931.0	-5.6	19.2	-17.6	0.50	0.00	-15.81
6,963.0	4.30	324.50	6,961.9	-4.2	18.4	-16.0	8.86	8.06	-76.13
6,996.0	9.10	321.20	6,994.7	-1.1	16.1	-12.2	14.59	14.55	-10.00
7,028.0	14.00	323.50	7,026.0	4.0	12.2	-5.8	15.38	15.31	7.19
7,061.0	17.70	323.10	7,057.8	11.2	6.8	3.1	11.22	11.21	-1.21

<b>Company:</b>	EOG Resources, Inc - RM	<b>Local Co-ordinate Reference:</b>	Well Critter Creek #15-19H
<b>Project:</b>	Weld County, CO	<b>TVD Reference:</b>	WELL @ 5312.0usft (SST #53)
<b>Site:</b>	Sec. 19, T11N, R63W, 6th P.M.	<b>MD Reference:</b>	WELL @ 5312.0usft (SST #53)
<b>Well:</b>	Critter Creek #15-19H	<b>North Reference:</b>	True
<b>Wellbore:</b>	Wellbore #1	<b>Survey Calculation Method:</b>	Minimum Curvature
<b>Design:</b>	Wellbore #1	<b>Database:</b>	EDM 5000.1 Single User Db

**Survey**

Measured Depth (usft)	Inclination (°)	Azimuth (°)	Vertical Depth (usft)	+N/-S (usft)	+E/-W (usft)	Vertical Section (usft)	Dogleg Rate (°/100usft)	Build Rate (°/100usft)	Turn Rate (°/100usft)
7,093.0	21.00	320.60	7,088.0	19.5	0.2	13.6	10.63	10.31	-7.81
7,125.0	24.80	318.80	7,117.4	29.0	-7.8	26.0	12.07	11.88	-5.63
7,156.0	28.60	318.90	7,145.1	39.5	-17.0	39.9	12.26	12.26	0.32
7,188.0	32.70	318.40	7,172.7	51.7	-27.8	56.2	12.84	12.81	-1.56
7,220.0	36.50	317.00	7,199.0	65.2	-40.0	74.3	12.13	11.88	-4.38
7,253.0	39.60	314.00	7,225.0	79.6	-54.3	94.6	10.94	9.39	-9.09
7,284.0	42.70	311.90	7,248.3	93.5	-69.2	115.0	10.95	10.00	-6.77
7,316.0	45.50	311.80	7,271.3	108.4	-85.8	137.3	8.75	8.75	-0.31
<b>Cross Hard-Line @ 7342' MD</b>									
7,342.3	48.21	311.14	7,289.3	121.1	-100.2	156.4	10.47	10.31	-2.52
7,348.0	48.80	311.00	7,293.1	123.9	-103.4	160.7	10.47	10.32	-2.39
7,379.0	52.50	310.60	7,312.7	139.6	-121.5	184.6	11.98	11.94	-1.29
7,411.0	55.70	310.50	7,331.5	156.4	-141.2	210.4	10.00	10.00	-0.31
7,443.0	59.10	310.70	7,348.7	173.9	-161.7	237.3	10.64	10.63	0.63
7,475.0	63.40	311.30	7,364.1	192.4	-182.9	265.3	13.54	13.44	1.88
7,507.0	66.80	311.30	7,377.6	211.5	-204.7	294.3	10.63	10.63	0.00
7,538.0	70.40	310.60	7,388.9	230.4	-226.5	323.1	11.80	11.61	-2.26
7,570.0	74.30	310.00	7,398.6	250.1	-249.7	353.4	12.32	12.19	-1.88
7,602.0	77.20	310.10	7,406.5	270.1	-273.5	384.3	9.07	9.06	0.31
7,633.0	81.10	310.50	7,412.3	289.8	-296.7	414.7	12.64	12.58	1.29
7,665.0	85.80	311.10	7,415.9	310.5	-320.7	446.4	14.81	14.69	1.88
7,681.0	87.30	311.90	7,416.9	321.1	-332.7	462.3	10.62	9.38	5.00
<b>Casing Point @ 7728' MD</b>									
7,728.0	87.96	312.48	7,418.8	352.7	-367.5	509.2	1.86	1.40	1.23
7,738.0	88.10	312.60	7,419.2	359.4	-374.8	519.2	1.86	1.40	1.23
7,769.0	88.70	312.90	7,420.1	380.5	-397.6	550.2	2.16	1.94	0.97
7,800.0	87.20	313.40	7,421.2	401.6	-420.2	581.2	5.10	-4.84	1.61
7,831.0	85.00	312.80	7,423.3	422.8	-442.8	612.1	7.35	-7.10	-1.94
7,862.0	84.30	312.70	7,426.2	443.7	-465.4	642.9	2.28	-2.26	-0.32
7,893.0	84.00	312.60	7,429.3	464.6	-488.1	673.7	1.02	-0.97	-0.32
7,923.0	85.30	313.90	7,432.1	485.1	-509.9	703.6	6.11	4.33	4.33
7,954.0	86.60	314.00	7,434.3	506.5	-532.1	734.5	4.21	4.19	0.32
7,985.0	86.50	315.30	7,436.2	528.3	-554.2	765.5	4.20	-0.32	4.19
8,016.0	86.40	314.70	7,438.1	550.2	-576.0	796.4	1.96	-0.32	-1.94
8,047.0	86.10	314.90	7,440.1	572.0	-598.0	827.3	1.16	-0.97	0.65
8,078.0	87.70	314.40	7,441.8	593.7	-620.0	858.3	5.41	5.16	-1.61
8,108.0	88.10	315.20	7,442.9	614.8	-641.3	888.3	2.98	1.33	2.67
8,139.0	88.20	315.50	7,443.9	636.9	-663.1	919.2	1.02	0.32	0.97
8,170.0	88.10	314.80	7,444.9	658.9	-684.9	950.2	2.28	-0.32	-2.26
8,201.0	87.60	315.30	7,446.1	680.8	-706.8	981.2	2.28	-1.61	1.61
8,232.0	85.10	314.70	7,448.0	702.7	-728.7	1,012.1	8.29	-8.06	-1.94
8,264.0	84.60	315.50	7,450.9	725.2	-751.2	1,044.0	2.94	-1.56	2.50
8,295.0	87.30	315.30	7,453.1	747.2	-772.9	1,074.9	8.73	8.71	-0.65
8,327.0	89.50	315.70	7,454.0	770.1	-795.3	1,106.9	6.99	6.88	1.25

<b>Company:</b>	EOG Resources, Inc - RM	<b>Local Co-ordinate Reference:</b>	Well Critter Creek #15-19H
<b>Project:</b>	Weld County, CO	<b>TVD Reference:</b>	WELL @ 5312.0usft (SST #53)
<b>Site:</b>	Sec. 19, T11N, R63W, 6th P.M.	<b>MD Reference:</b>	WELL @ 5312.0usft (SST #53)
<b>Well:</b>	Critter Creek #15-19H	<b>North Reference:</b>	True
<b>Wellbore:</b>	Wellbore #1	<b>Survey Calculation Method:</b>	Minimum Curvature
<b>Design:</b>	Wellbore #1	<b>Database:</b>	EDM 5000.1 Single User Db

**Survey**

Measured Depth (usft)	Inclination (°)	Azimuth (°)	Vertical Depth (usft)	+N/-S (usft)	+E/-W (usft)	Vertical Section (usft)	Dogleg Rate (°/100usft)	Build Rate (°/100usft)	Turn Rate (°/100usft)
8,359.0	89.90	315.00	7,454.2	792.8	-817.8	1,138.9	2.52	1.25	-2.19
8,390.0	89.80	314.00	7,454.2	814.5	-839.9	1,169.9	3.24	-0.32	-3.23
8,421.0	91.30	313.30	7,453.9	835.9	-862.3	1,200.9	5.34	4.84	-2.26
8,452.0	91.70	313.30	7,453.1	857.2	-884.9	1,231.9	1.29	1.29	0.00
8,515.0	90.50	315.40	7,451.9	901.2	-929.9	1,294.9	3.84	-1.90	3.33
8,578.0	90.90	315.50	7,451.2	946.1	-974.1	1,357.8	0.65	0.63	0.16
8,642.0	90.80	315.50	7,450.2	991.8	-1,019.0	1,421.8	0.16	-0.16	0.00
8,706.0	90.20	317.40	7,449.6	1,038.1	-1,063.0	1,485.8	3.11	-0.94	2.97
8,770.0	87.70	317.60	7,450.8	1,085.3	-1,106.3	1,549.7	3.92	-3.91	0.31
8,834.0	87.70	318.20	7,453.4	1,132.8	-1,149.1	1,613.6	0.94	0.00	0.94
8,897.0	90.00	317.00	7,454.7	1,179.3	-1,191.6	1,676.5	4.12	3.65	-1.90
8,961.0	90.50	316.60	7,454.4	1,225.9	-1,235.4	1,740.5	1.00	0.78	-0.63
9,024.0	90.60	316.80	7,453.8	1,271.8	-1,278.6	1,803.4	0.35	0.16	0.32
9,087.0	89.30	317.60	7,453.8	1,318.0	-1,321.4	1,866.4	2.42	-2.06	1.27
9,150.0	89.60	316.80	7,454.4	1,364.2	-1,364.2	1,929.3	1.36	0.48	-1.27
9,214.0	89.50	317.00	7,454.9	1,411.0	-1,408.0	1,993.3	0.35	-0.16	0.31
9,277.0	89.00	316.50	7,455.8	1,456.8	-1,451.1	2,056.2	1.12	-0.79	-0.79
9,340.0	89.90	318.20	7,456.4	1,503.2	-1,493.8	2,119.2	3.05	1.43	2.70
9,404.0	88.50	315.30	7,457.3	1,549.8	-1,537.6	2,183.1	5.03	-2.19	-4.53
9,467.0	89.80	314.20	7,458.2	1,594.1	-1,582.4	2,246.1	2.70	2.06	-1.75
9,530.0	89.80	313.10	7,458.4	1,637.6	-1,628.0	2,309.1	1.75	0.00	-1.75
9,593.0	88.90	313.40	7,459.1	1,680.8	-1,673.9	2,372.1	1.51	-1.43	0.48
9,657.0	88.80	311.90	7,460.4	1,724.1	-1,720.9	2,436.0	2.35	-0.16	-2.34
9,720.0	89.40	314.20	7,461.4	1,767.1	-1,766.9	2,498.9	3.77	0.95	3.65
9,784.0	88.90	313.00	7,462.3	1,811.2	-1,813.3	2,562.9	2.03	-0.78	-1.88
9,847.0	89.40	313.40	7,463.3	1,854.4	-1,859.2	2,625.9	1.02	0.79	0.63
9,910.0	88.90	313.40	7,464.2	1,897.6	-1,905.0	2,688.9	0.79	-0.79	0.00
9,974.0	89.30	312.80	7,465.2	1,941.4	-1,951.7	2,752.8	1.13	0.63	-0.94
10,036.0	89.10	312.70	7,466.1	1,983.5	-1,997.2	2,814.8	0.36	-0.32	-0.16
10,100.0	90.20	313.90	7,466.5	2,027.3	-2,043.8	2,878.7	2.54	1.72	1.88
10,163.0	90.20	313.70	7,466.3	2,070.9	-2,089.3	2,941.7	0.32	0.00	-0.32
10,227.0	89.90	314.30	7,466.2	2,115.4	-2,135.3	3,005.7	1.05	-0.47	0.94
10,291.0	90.00	313.10	7,466.3	2,159.6	-2,181.6	3,069.7	1.88	0.16	-1.88
10,354.0	90.40	314.00	7,466.0	2,203.0	-2,227.2	3,132.7	1.56	0.63	1.43
10,418.0	89.50	315.50	7,466.1	2,248.1	-2,272.7	3,196.7	2.73	-1.41	2.34
10,482.0	89.10	313.70	7,466.9	2,293.0	-2,318.2	3,260.7	2.88	-0.63	-2.81
10,546.0	89.60	315.60	7,467.6	2,338.0	-2,363.8	3,324.7	3.07	0.78	2.97
10,607.0	88.00	315.60	7,468.9	2,381.6	-2,406.4	3,385.7	2.62	-2.62	0.00
10,670.0	87.40	314.90	7,471.4	2,426.3	-2,450.8	3,448.6	1.46	-0.95	-1.11
10,734.0	88.80	316.00	7,473.5	2,471.8	-2,495.6	3,512.6	2.78	2.19	1.72
10,798.0	89.10	315.00	7,474.7	2,517.5	-2,540.5	3,576.6	1.63	0.47	-1.56
10,861.0	89.60	315.50	7,475.4	2,562.2	-2,584.8	3,639.5	1.12	0.79	0.79
10,926.0	89.10	316.10	7,476.2	2,608.8	-2,630.1	3,704.5	1.20	-0.77	0.92



<b>Company:</b>	EOG Resources, Inc - RM	<b>Local Co-ordinate Reference:</b>	Well Critter Creek #15-19H
<b>Project:</b>	Weld County, CO	<b>TVD Reference:</b>	WELL @ 5312.0usft (SST #53)
<b>Site:</b>	Sec. 19, T11N, R63W, 6th P.M.	<b>MD Reference:</b>	WELL @ 5312.0usft (SST #53)
<b>Well:</b>	Critter Creek #15-19H	<b>North Reference:</b>	True
<b>Wellbore:</b>	Wellbore #1	<b>Survey Calculation Method:</b>	Minimum Curvature
<b>Design:</b>	Wellbore #1	<b>Database:</b>	EDM 5000.1 Single User Db

#### Survey

Measured Depth (usft)	Inclination (°)	Azimuth (°)	Vertical Depth (usft)	+N/-S (usft)	+E/-W (usft)	Vertical Section (usft)	Dogleg Rate (°/100usft)	Build Rate (°/100usft)	Turn Rate (°/100usft)
10,989.0	89.40	317.00	7,477.0	2,654.6	-2,673.5	3,767.5	1.51	0.48	1.43
11,052.0	88.50	318.00	7,478.1	2,701.0	-2,716.0	3,830.4	2.14	-1.43	1.59
11,116.0	88.50	317.00	7,479.8	2,748.2	-2,759.2	3,894.3	1.56	0.00	-1.56
11,179.0	88.20	315.70	7,481.6	2,793.7	-2,802.7	3,957.3	2.12	-0.48	-2.06
11,243.0	88.00	315.30	7,483.7	2,839.3	-2,847.5	4,021.2	0.70	-0.31	-0.63
11,306.0	89.00	315.30	7,485.4	2,884.1	-2,891.8	4,084.2	1.59	1.59	0.00
11,370.0	89.00	315.50	7,486.5	2,929.7	-2,936.8	4,148.2	0.31	0.00	0.31
11,433.0	89.00	314.70	7,487.6	2,974.3	-2,981.2	4,211.2	1.27	0.00	-1.27
11,497.0	89.40	315.40	7,488.5	3,019.6	-3,026.4	4,275.2	1.26	0.63	1.09
11,561.0	89.80	314.90	7,489.0	3,065.0	-3,071.6	4,339.2	1.00	0.63	-0.78
11,625.0	89.00	315.70	7,489.6	3,110.4	-3,116.6	4,403.2	1.77	-1.25	1.25
11,688.0	89.80	315.00	7,490.3	3,155.3	-3,160.9	4,466.2	1.69	1.27	-1.11
11,751.0	89.30	313.80	7,490.8	3,199.3	-3,205.9	4,529.2	2.06	-0.79	-1.90
11,814.0	89.40	314.30	7,491.5	3,243.1	-3,251.1	4,592.2	0.81	0.16	0.79
11,878.0	89.80	315.00	7,491.9	3,288.1	-3,296.7	4,656.1	1.26	0.63	1.09
11,941.0	87.60	314.00	7,493.4	3,332.3	-3,341.6	4,719.1	3.84	-3.49	-1.59
12,005.0	86.80	313.80	7,496.5	3,376.6	-3,387.7	4,783.0	1.29	-1.25	-0.31
12,068.0	88.30	313.80	7,499.2	3,420.1	-3,433.1	4,846.0	2.38	2.38	0.00
12,132.0	89.80	314.40	7,500.2	3,464.7	-3,479.0	4,910.0	2.52	2.34	0.94
12,195.0	89.70	316.40	7,500.5	3,509.5	-3,523.3	4,972.9	3.18	-0.16	3.17
12,258.0	90.50	316.30	7,500.4	3,555.1	-3,566.8	5,035.9	1.28	1.27	-0.16
12,322.0	90.40	315.60	7,499.9	3,601.1	-3,611.3	5,099.9	1.10	-0.16	-1.09
12,386.0	90.20	314.30	7,499.6	3,646.3	-3,656.5	5,163.9	2.06	-0.31	-2.03
12,449.0	90.20	314.00	7,499.4	3,690.2	-3,701.7	5,226.9	0.48	0.00	-0.48
12,512.0	90.20	314.00	7,499.1	3,734.0	-3,747.1	5,289.9	0.00	0.00	0.00
12,576.0	89.80	314.10	7,499.1	3,778.5	-3,793.1	5,353.9	0.64	-0.63	0.16
12,639.0	89.90	313.00	7,499.3	3,821.9	-3,838.7	5,416.9	1.75	0.16	-1.75
12,703.0	89.80	312.00	7,499.5	3,865.1	-3,885.9	5,480.8	1.57	-0.16	-1.56
12,766.0	89.50	310.00	7,499.9	3,906.4	-3,933.5	5,543.7	3.21	-0.48	-3.17
12,829.0	90.40	311.30	7,499.9	3,947.5	-3,981.2	5,606.5	2.51	1.43	2.06
12,893.0	90.90	314.00	7,499.2	3,990.8	-4,028.3	5,670.4	4.29	0.78	4.22
12,957.0	90.10	314.80	7,498.6	4,035.6	-4,074.0	5,734.4	1.77	-1.25	1.25
13,003.0	90.00	315.50	7,498.6	4,068.2	-4,106.5	5,780.4	1.54	-0.22	1.52
<b>TD @ 13050' MD / 7499' TVD</b>									
13,050.0	90.00	315.50	7,498.6	4,101.7	-4,139.4	5,827.4	0.00	0.00	0.00

#### Casing Points

Measured Depth (usft)	Vertical Depth (usft)	Name	Casing Diameter (")	Hole Diameter (")
7,728.0	7,418.8	7"	7	8-3/4

<b>Company:</b>	EOG Resources, Inc - RM	<b>Local Co-ordinate Reference:</b>	Well Critter Creek #15-19H
<b>Project:</b>	Weld County, CO	<b>TVD Reference:</b>	WELL @ 5312.0usft (SST #53)
<b>Site:</b>	Sec. 19, T11N, R63W, 6th P.M.	<b>MD Reference:</b>	WELL @ 5312.0usft (SST #53)
<b>Well:</b>	Critter Creek #15-19H	<b>North Reference:</b>	True
<b>Wellbore:</b>	Wellbore #1	<b>Survey Calculation Method:</b>	Minimum Curvature
<b>Design:</b>	Wellbore #1	<b>Database:</b>	EDM 5000.1 Single User Db

Survey Annotations				
Measured Depth (usft)	Vertical Depth (usft)	Local Coordinates		Comment
		+N/-S (usft)	+E/-W (usft)	
1,435.0	1,435.0	-1.4	0.2	Tie-In to Gyro
7,342.3	7,289.3	121.1	-100.2	Cross Hard-Line @ 7342' MD
7,728.0	7,418.8	352.7	-367.5	Casing Point @ 7728' MD
13,050.0	7,498.6	4,101.7	-4,139.4	TD @ 13050' MD / 7499' TVD

Checked By: _____	Approved By: _____	Date: _____
-------------------	--------------------	-------------



---

---

## Survey Certification Sheet

EOG Resources, Inc.  
Company

RM-11024  
Job Number

02/28/2011  
Date

Sec. 19, T11N, R63W  
Lease

Critter Creek #15-19H  
Well Name

Weld, CO  
County & State

Surveyed from a depth of: 1435 feet to 13050 feet MD

Type of Survey: MWD

Directional Supervisor/Surveyor: Bill Delahunt

The data and calculations for this survey have been checked by me and conform to the standards and procedures set forth by **The Directional Drilling Company (DDC)**. This report represents a true and correct Directional survey of this well based on the original data obtained at the well site. Wellbore Coordinates are calculated using minimum curvature.

Digitally signed by  
Larry Wright  
DN: cn=Larry Wright,  
o, ou,  
email=larryw@directionaldrillers.com, c=US  
Date: 2011.03.11  
10:46:42 -06'00'

Larry Wright  
MWD General Manager