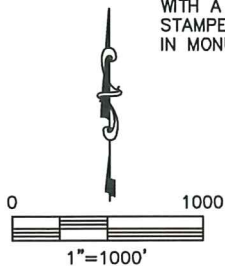
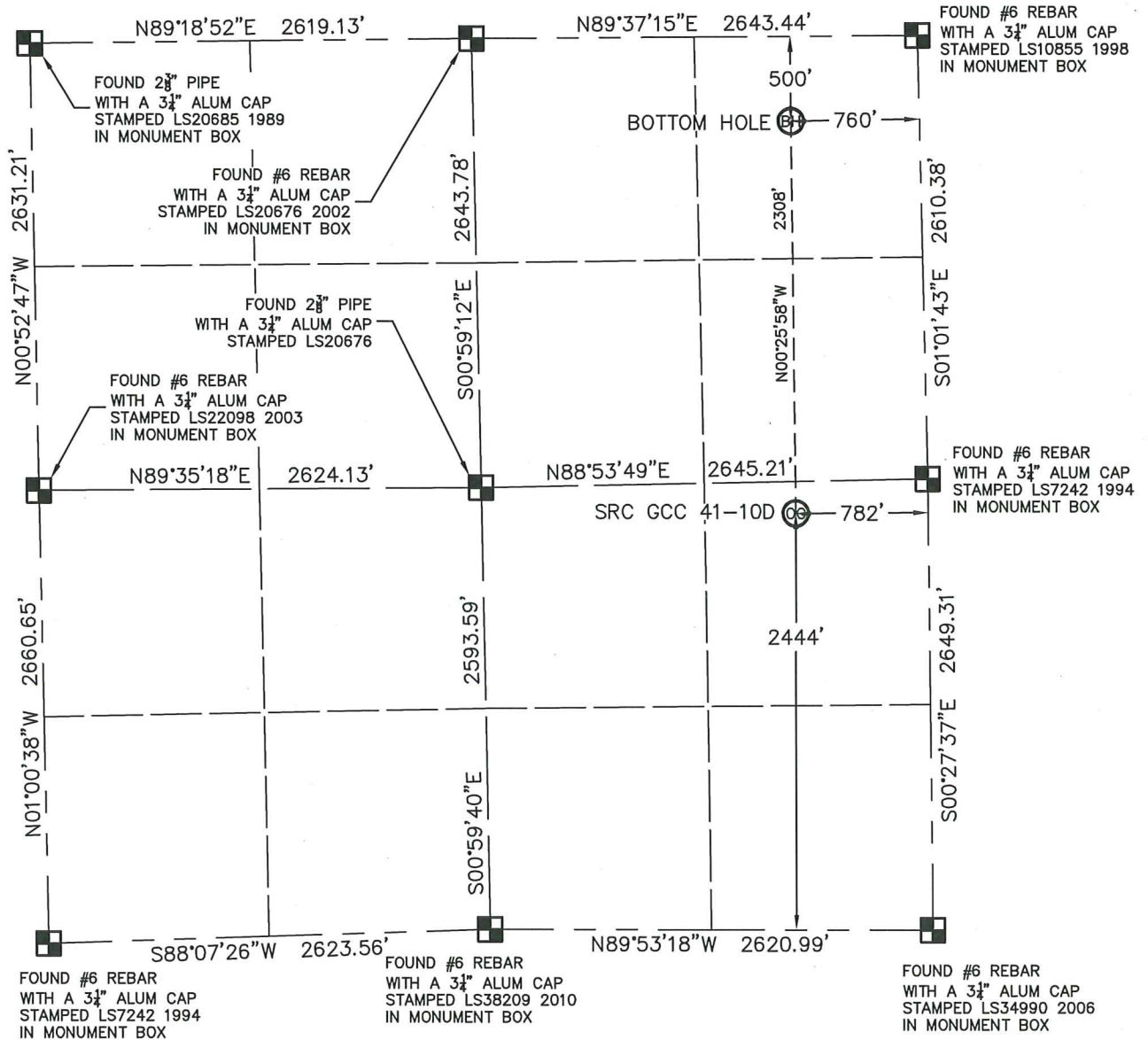


## WELL LOCATION CERTIFICATE

SRC GCC 41-10D

THIS MAP DOES NOT REPRESENT A BOUNDARY SURVEY

SECTION: 10  
TOWNSHIP: 5N  
RANGE: 66W

In accordance with a request from CRAIG RASMUSON with SYNERGY RESOURCES CORPORATION King Surveyors Inc. has determined the surface location of SRC GCC 41-10D to be 2444' from the SOUTH line and 782' from the EAST line and the bottom hole to be 500' from the NORTH line and 760' from the EAST line, as measured at right angles, from the section lines of Section 10, Township 5 North, Range 66 West of the Sixth Principal Meridian, County of Weld, State of Colorado.

I hereby state that this Well Location Certificate was prepared by me, or under my direct supervision, that the fieldwork was completed on 9-14-2011, for and on behalf of SYNERGY RESOURCES CORPORATION. That this is not a Land Survey Plat or an Improvement Survey Plat, and that it is not to be relied upon for establishment of fence, building, or other future improvement lines.

## NOTE:

- 1) Bearings shown are Grid Bearings of the Colorado State Plane Coordinate System, North Zone, North American Datum 1983/2007. The lineal dimensions as contained herein are based upon the "U.S. Survey Foot."
- 2) Ground elevations are based on an observed GPS elevation (NAVD 1988 DATUM).
- 3) NEAREST EXISTING WELL: NO EXISTING WELLS IN THIS SECTION
- 4) IMPROVEMENTS: See LOCATION DRAWING exhibit for all visible improvements within 400' of disturbed area.
- 5) SURFACE USE: OPEN FIELD
- 6) FIELD OPERATOR: CHAD DILKA

SURFACE LOCATION  
LATITUDE: 40.41360°N  
LONGITUDE: 104.75910°W  
PDOP: 1.8  
ELEV: 4858'  
1/4, 1/4: NE 1/4 SE 1/4  
NEAREST PROPERTY LINE: 188' NORTH

BOTTOM HOLE  
LATITUDE: 40.41993°N  
LONGITUDE: 104.75909°W

## LEGEND

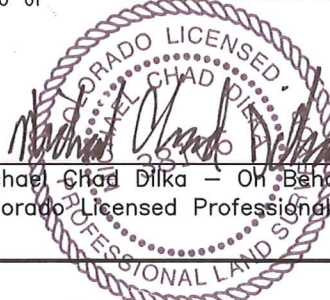
- = FOUND ALIQUOT MONUMENT AS DESCRIBED
- = CALCULATED POSITION
- = SET ALIQUOT MONUMENT AS DESCRIBED

## NOTE

According to Colorado law, you must commence any legal action based upon any defect in this W.L.C. within three years after you discover such defect. In no event, may any action based upon any defect in this survey be commenced more than ten years after the date of the certificate shown hereon. (13-80-105 C.R.S.)

Michael Chad Dilka - On Behalf Of King Surveyors, Inc.  
Colorado Licensed Professional Land Surveyor #38106

PROJECT#: 2011174



9/15/2011

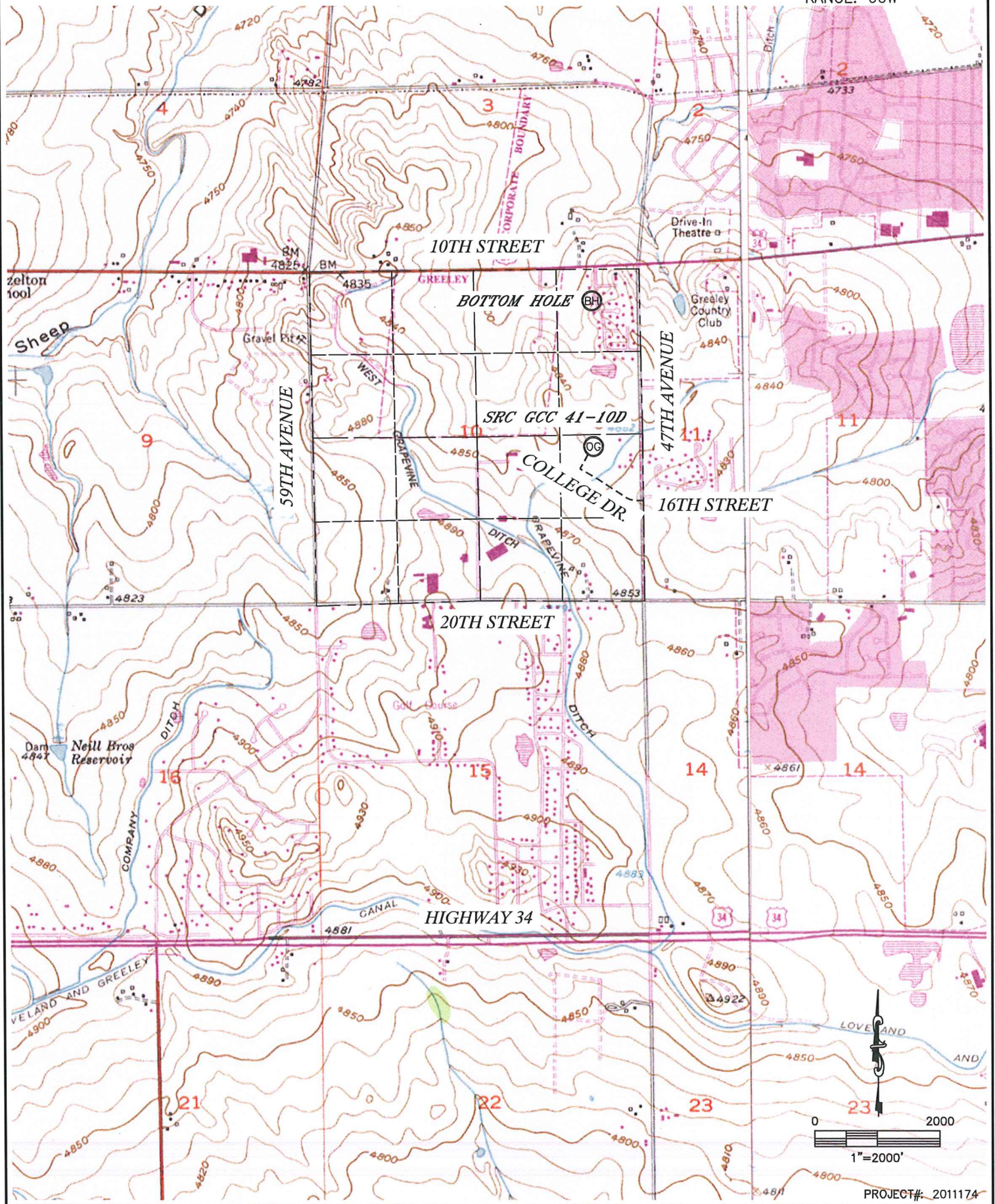


KING SURVEYORS, INC. 650 E. GARDEN DR. WINDSOR, CO 80550

# ACCESS ROAD MAP

SRC GCC 41-10D

SECTION: 10  
TOWNSHIP: 5N  
RANGE: 66W



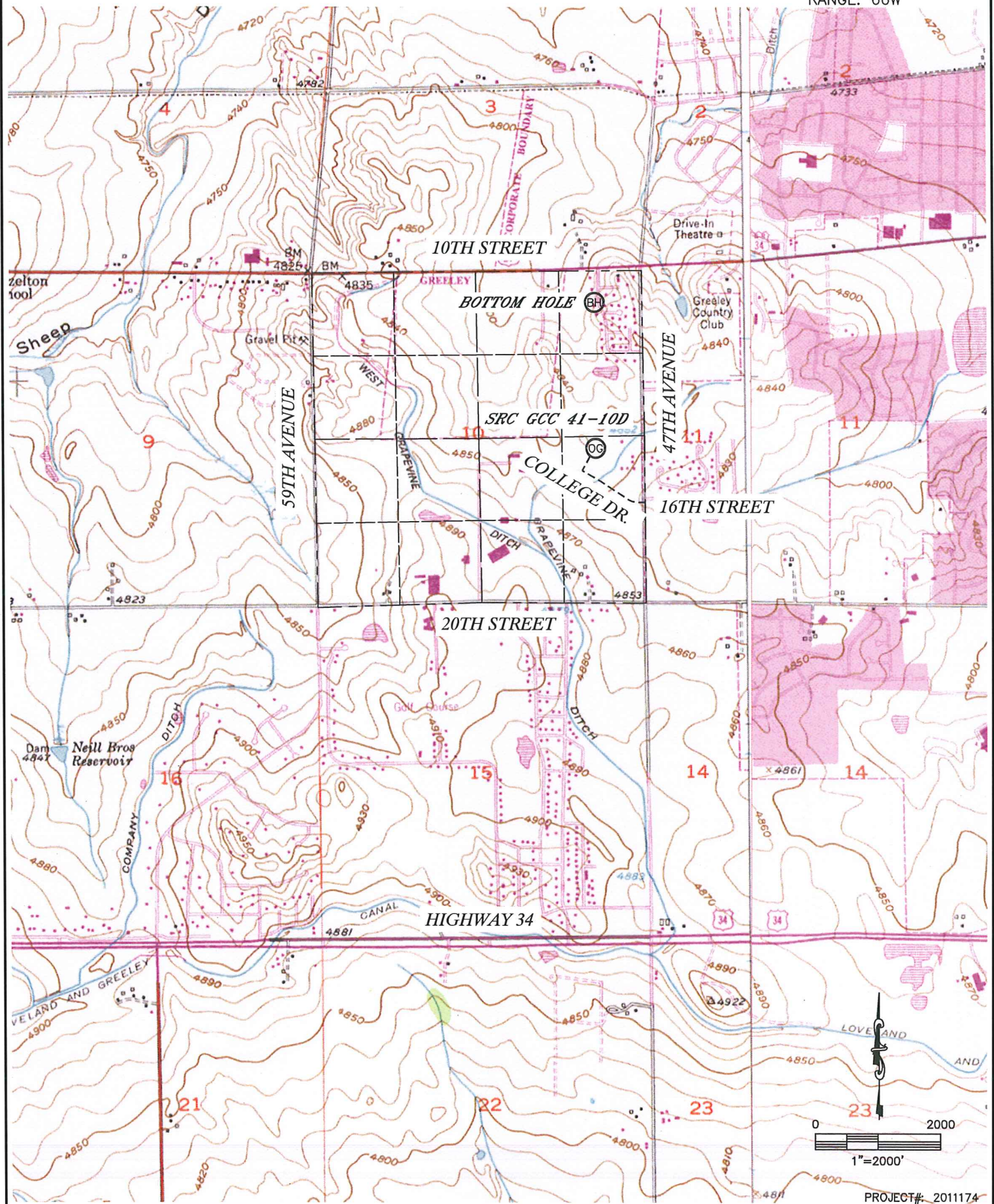


KING SURVEYORS, INC. 650 E. GARDEN DR. WINDSOR, CO 80550

# TOPOGRAPHIC MAP

SRC GCC 41-10D

SECTION: 10  
TOWNSHIP: 5N  
RANGE: 66W





# LOCATION DRAWING

SRC GCC 41-10D

SECTION: 10  
TOWNSHIP: 5N  
RANGE: 66W



- (A) PROPERTY LINE 188'N, 317'E, 440'SE
- (B) OVERHEAD UTILITY LINE 178'N, 317'E
- (C) FENCE 190'N, 317'E, 507'SW, 571'NW
- (D) WATERLINE 89'NW, 194'NW, 207'SW, 224'SW
- (E) BLOWOFF 224'SW, 261'SW, 293'SW, 448'SE
- (F) WATER MANHOLE 306'SW, 392'SW
- (G) WATER VALVE 384'SW, 406'SW, 446'SE
- (H) ANTENNA 299'SW
- (I) ELECTRIC METER 306'SW
- (J) IRRIGATION CONTROL BOX 491'SW
- (K) BOLLARD 462'SW, 493'S
- (L) AIMS SIGN 507'SW
- (M) LIGHT POLE 417'SW
- (N) NE EDGE ASPHALT ROAD 397'SW
- (O) E EDGE FIELD ROAD 399'W

- (P) N EDGE DITCH ROAD 415'S
- (Q) NW EDGE IRRIGATION DITCH 392'SE, 419'S
- (R) CONCRETE IRRIGATION STRUCTURE 470'SW, 460'S
- (S) HOUSE 631'NW, 680'NW, 419'E, 584'E, 638'SE, 636'SE, 555'SE
- (T) GARAGE 601'SE
- (U) BARN/SHED 338'E, 477'SE, 596'SE, 628'SE, 559'SE, 650'NW
- (V) PUTTING GREEN 244'N, 423'NW
- (W) SAND TRAP 324'N, 391'NW, 510'NW
- (X) SW SIDE WATER HAZARD 472'NE
- (Y) TEE BOX 454'NE, 554'NW, 566'NW
- (Z) CART PATH 373'NE, 535'NW, 503'NW, 593'NW
- (AA) S EDGE FAIRWAY 221'N, 369'NW
- (BB) TELEPHONE PEDESTAL 575'NW, 728'NE
- (CC) WATER METER 431'SE, 460'SE
- (DD) CONCRETE MANHOLE 402' NE

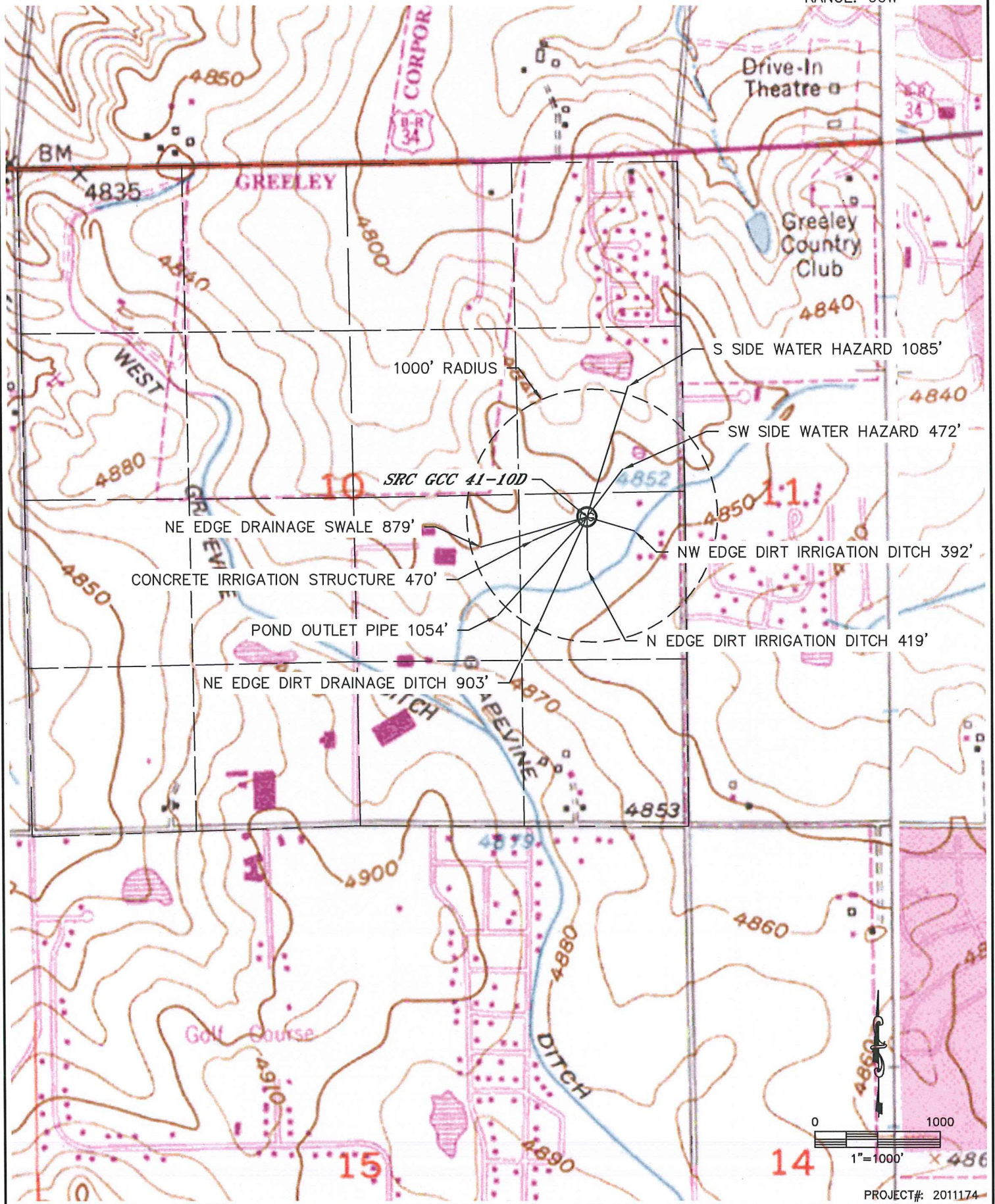
NEAREST:  
BUILDING=338' E  
PUBLIC ROAD=397' SW  
ABOVE GND UTILITY=178' N  
RAILROAD=5280'+  
PROPERTY LINE= 188' N



# HYDROLOGY MAP

SRC GCC 41-10D

SECTION: 10  
TOWNSHIP: 5N  
RANGE: 66W





SRC GCC 41-10D  
TOWNSHIP 5 NORTH, RANGE 66 WEST  
SECTION 10: NE1/4SE1/4  
WELD COUNTY, COLORADO

WELL FACING NORTH  
PICTURE DATED: 9/14/2011



WELL FACING SOUTH  
PICTURE DATED: 9/14/2011





SRC GCC 41-10D  
TOWNSHIP 5 NORTH, RANGE 66 WEST  
SECTION 10: NE1/4SE1/4  
WELD COUNTY, COLORADO

WELL FACING EAST  
PICTURE DATED: 9/14/2011



WELL FACING WEST  
PICTURE DATED: 9/14/2011





SRC GCC 41-10D  
TOWNSHIP 5 NORTH, RANGE 66 WEST  
SECTION 10: NE1/4SE1/4  
WELD COUNTY, COLORADO

REFERENCE AREA FACING WEST  
PICTURE DATED: 9/14/2011

