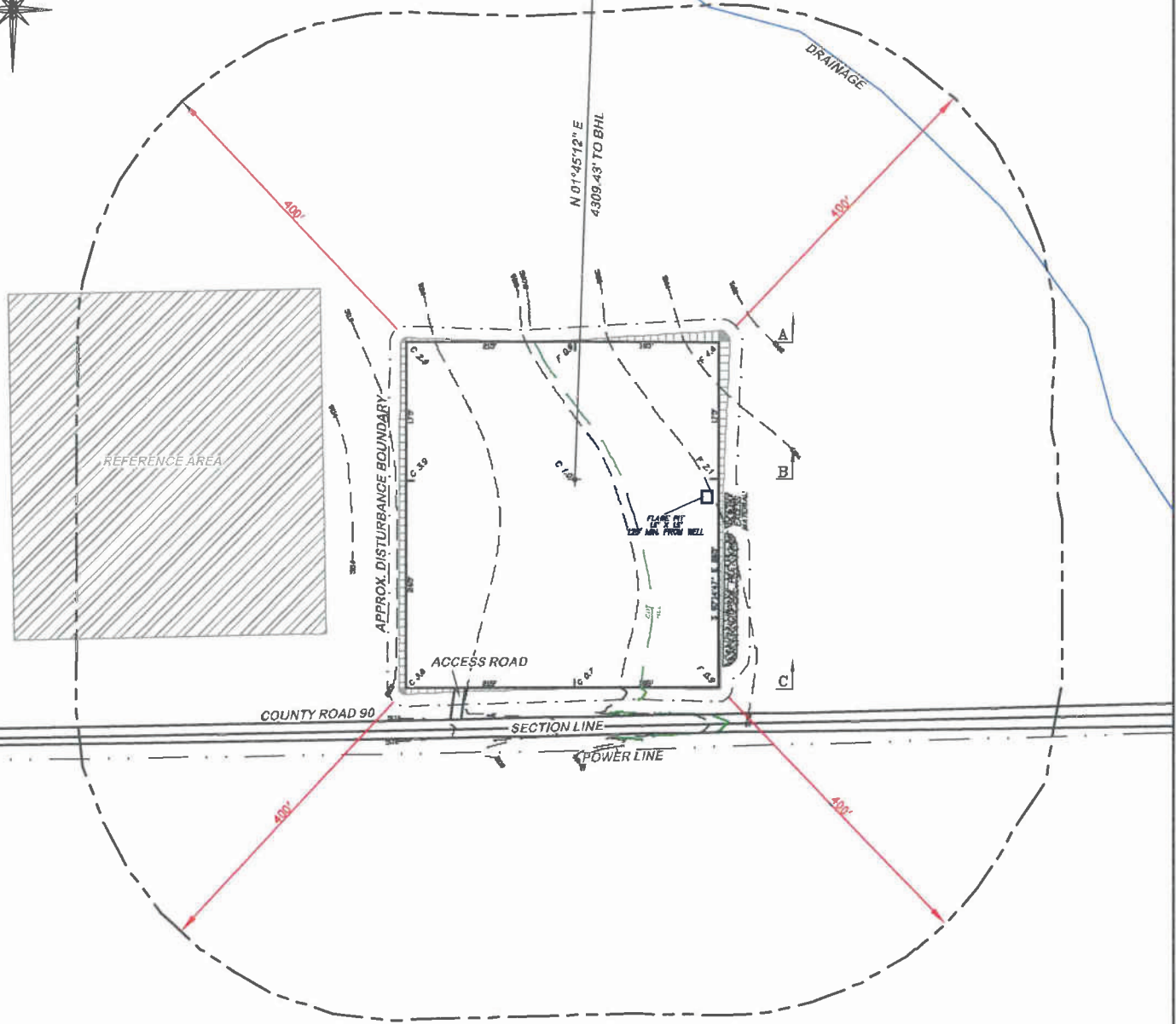


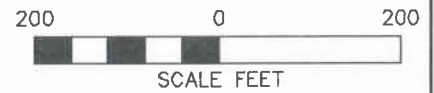
APPROXIMATE DISTURBANCE AREA: 5.0 ACRES±
 1.8% GRADE ON A NORTHEASTERLY SLOPE
 UNGRADED ELEVATION: 5108.8'
 FINISHED ELEVATION: 5107.8'


2A ATTACHMENT
2



**BEFORE DIGGING
 CALL FOR
 UTILITY LINE LOCATION**

NOTE: THE EARTH QUANTITIES ON
 THIS DRAWING ARE ESTIMATED
 AND THE USE OF IS AT THE
 RESPONSIBILITY OF THE USER.



 DRG RIFFIN & ASSOCIATES, INC. (307) 362-5028 1414 ELK ST., ROCK SPRINGS, WY 82901	

LOCATION DRAWING
CHESAPEAKE ENERGY, LLC. BRENT 20-8-66 1H SECTION 20, T8N, R66W UNGRADED ELEVATION: 5108.8' FINISHED ELEVATION: 5107.8'