

ENSIGN

Directional

Well Name: SRC GCC 11-11D

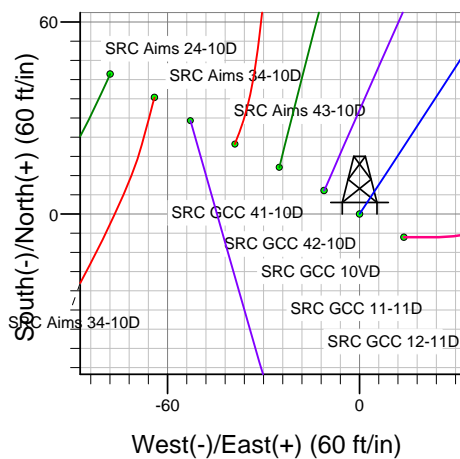
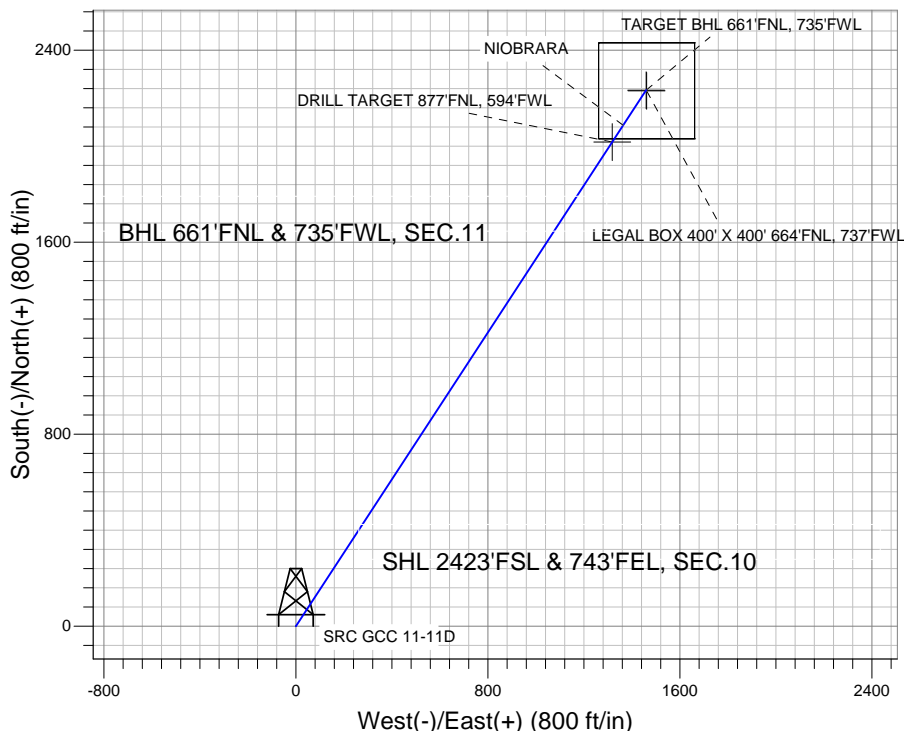
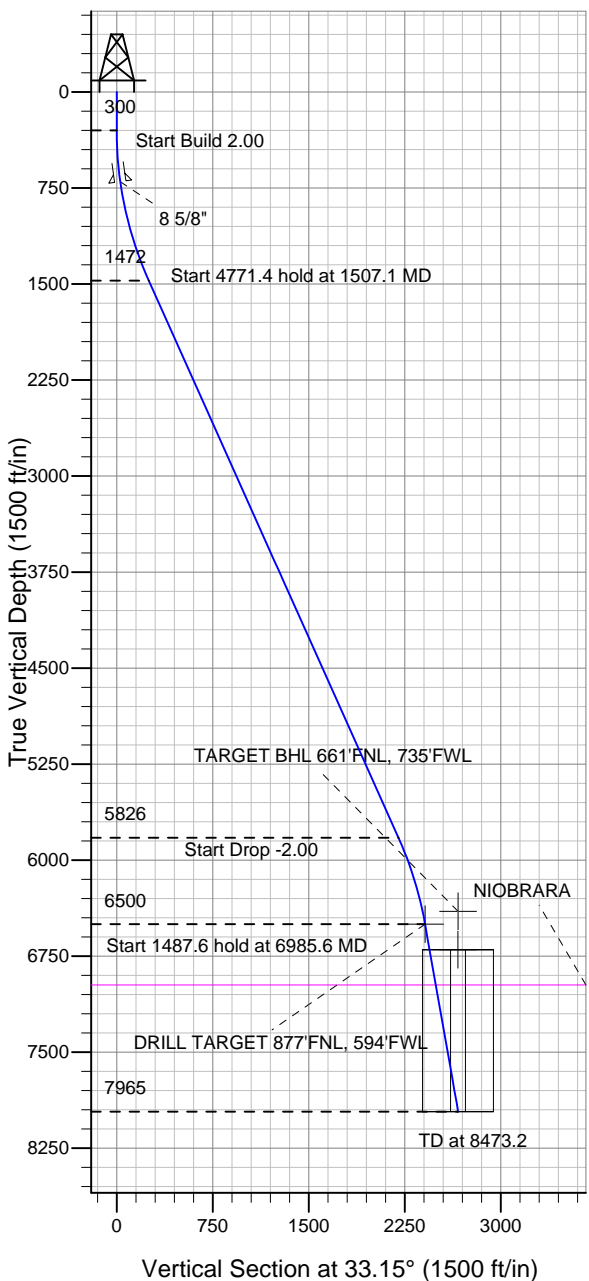
Surface Location: SRC Aims/GCC Pad Sec.10-T5N-R66W
 North American Datum 1983 US State Plane 1983 Wyoming Western Zone

Ground Elevation: 4858.0

+N/-S	+E/-W	Northing	Easting	Latitude	Longitude	Slot
0.0	0.0	341325.55	4107571.71	40.413540	-104.758959	

Original Well Elev WELL @ 4871.0ft (Original Well Elev)

Synergy Resources



SRC Aims/GCC Pad Sec.10-T5N-R66W
 SRC GCC 11-11D
 Plan #2 (9-21-11)
 14:11, October 05 2011



Azimuths to True North
 Magnetic North: 8.82°

Magnetic Field
 Strength: 53106.5nT
 Dip Angle: 67.05°
 Date: 10/5/2011
 Model: IGRF2010

WELLBORE TARGET DETAILS (LAT/LONG)

Name	TVD	+N/-S	+E/-W	Latitude	Longitude	Shape
TARGET BHL 661'FNL, 735'FWL	6400.0	2233.3	1458.8	40.419670	-104.753720	Point
DRILL TARGET 877'FNL, 594'FWL	6500.0	2017.0	1317.5	40.419076	-104.754227	Point
LEGAL BOX 400' X 400' 664'FNL, 737'FWL	6700.0	2230.3	1460.8	40.419662	-104.753713	Rectangle (Sides: L400.0 W400.0)

SECTION DETAILS

Sec	MD	Inc	Azi	TVD	+N/-S	+E/-W	DLeg	TFace	VSec	Target
1	0.0	0.00	0.00	0.0	0.0	0.0	0.00	0.00	0.0	
2	300.0	0.00	0.00	300.0	0.0	0.0	0.00	0.00	0.0	
3	1507.1	24.14	33.15	1471.7	209.8	137.0	2.00	33.15	250.6	
4	6278.5	24.14	33.15	5825.7	1843.7	1204.3	0.00	0.00	2202.1	
5	6985.6	10.00	33.15	6500.0	2017.0	1317.5	2.00	180.00	2409.2	DRILL TARGET 877'FNL, 594'FWL
6	8473.2	10.00	33.15	7965.0	2233.3	1458.8	0.00	0.00	2667.5	



Directional

Synergy Resources

SEC.10-T5N-R66W

SRC Aims/GCC Pad Sec.10-T5N-R66W

SRC GCC 11-11D

Wellbore #1

Plan: Plan #2 (9-21-11)

Standard Planning Report

05 October, 2011

Plan Sections										
Measured Depth (ft)	Inclination (°)	Azimuth (°)	Vertical Depth (ft)	+N/-S (ft)	+E/-W (ft)	Dogleg Rate (°/100ft)	Build Rate (°/100ft)	Turn Rate (°/100ft)	TFO (°)	Target
0.0	0.00	0.00	0.0	0.0	0.0	0.00	0.00	0.00	0.00	
300.0	0.00	0.00	300.0	0.0	0.0	0.00	0.00	0.00	0.00	
1,507.1	24.14	33.15	1,471.7	209.8	137.0	2.00	2.00	0.00	33.15	
6,278.5	24.14	33.15	5,825.7	1,843.7	1,204.3	0.00	0.00	0.00	0.00	
6,985.6	10.00	33.15	6,500.0	2,017.0	1,317.5	2.00	-2.00	0.00	180.00	DRILL TARGET 87
8,473.2	10.00	33.15	7,965.0	2,233.3	1,458.8	0.00	0.00	0.00	0.00	

Database: Landmark
Company: Synergy Resources
Project: SEC.10-T5N-R66W
Site: SRC Aims/GCC Pad Sec.10-T5N-R66W
Well: SRC GCC 11-11D
Wellbore: Wellbore #1
Design: Plan #2 (9-21-11)

Local Co-ordinate Reference: Well SRC GCC 11-11D
TVD Reference: WELL @ 4871.0ft (Original Well Elev)
MD Reference: WELL @ 4871.0ft (Original Well Elev)
North Reference: True
Survey Calculation Method: Minimum Curvature

Planned Survey

Measured Depth (ft)	Inclination (°)	Azimuth (°)	Vertical Depth (ft)	+N/-S (ft)	+E/-W (ft)	Vertical Section (ft)	Dogleg Rate (°/100ft)	Build Rate (°/100ft)	Turn Rate (°/100ft)
0.0	0.00	0.00	0.0	0.0	0.0	0.0	0.00	0.00	0.00
40.0	0.00	0.00	40.0	0.0	0.0	0.0	0.00	0.00	0.00
80.0	0.00	0.00	80.0	0.0	0.0	0.0	0.00	0.00	0.00
120.0	0.00	0.00	120.0	0.0	0.0	0.0	0.00	0.00	0.00
160.0	0.00	0.00	160.0	0.0	0.0	0.0	0.00	0.00	0.00
200.0	0.00	0.00	200.0	0.0	0.0	0.0	0.00	0.00	0.00
240.0	0.00	0.00	240.0	0.0	0.0	0.0	0.00	0.00	0.00
280.0	0.00	0.00	280.0	0.0	0.0	0.0	0.00	0.00	0.00
300.0	0.00	0.00	300.0	0.0	0.0	0.0	0.00	0.00	0.00
320.0	0.40	33.15	320.0	0.1	0.0	0.1	2.00	2.00	0.00
360.0	1.20	33.15	360.0	0.5	0.3	0.6	2.00	2.00	0.00
400.0	2.00	33.15	400.0	1.5	1.0	1.7	2.00	2.00	0.00
440.0	2.80	33.15	439.9	2.9	1.9	3.4	2.00	2.00	0.00
480.0	3.60	33.15	479.9	4.7	3.1	5.7	2.00	2.00	0.00
520.0	4.40	33.15	519.8	7.1	4.6	8.4	2.00	2.00	0.00
560.0	5.20	33.15	559.6	9.9	6.4	11.8	2.00	2.00	0.00
600.0	6.00	33.15	599.5	13.1	8.6	15.7	2.00	2.00	0.00
640.0	6.80	33.15	639.2	16.9	11.0	20.2	2.00	2.00	0.00
680.0	7.60	33.15	678.9	21.1	13.8	25.2	2.00	2.00	0.00
701.3	8.03	33.15	700.0	23.5	15.3	28.1	2.00	2.00	0.00
8 5/8"									
720.0	8.40	33.15	718.5	25.7	16.8	30.7	2.00	2.00	0.00
760.0	9.20	33.15	758.0	30.9	20.2	36.9	2.00	2.00	0.00
800.0	10.00	33.15	797.5	36.4	23.8	43.5	2.00	2.00	0.00
840.0	10.80	33.15	836.8	42.5	27.7	50.7	2.00	2.00	0.00
880.0	11.60	33.15	876.0	49.0	32.0	58.5	2.00	2.00	0.00
920.0	12.40	33.15	915.2	56.0	36.5	66.8	2.00	2.00	0.00
960.0	13.20	33.15	954.2	63.4	41.4	75.7	2.00	2.00	0.00
1,000.0	14.00	33.15	993.1	71.2	46.5	85.1	2.00	2.00	0.00
1,040.0	14.80	33.15	1,031.8	79.6	52.0	95.0	2.00	2.00	0.00
1,080.0	15.60	33.15	1,070.4	88.4	57.7	105.5	2.00	2.00	0.00
1,120.0	16.40	33.15	1,108.8	97.6	63.7	116.6	2.00	2.00	0.00
1,160.0	17.20	33.15	1,147.1	107.3	70.1	128.1	2.00	2.00	0.00
1,200.0	18.00	33.15	1,185.3	117.4	76.7	140.2	2.00	2.00	0.00
1,240.0	18.80	33.15	1,223.2	128.0	83.6	152.8	2.00	2.00	0.00
1,280.0	19.60	33.15	1,261.0	139.0	90.8	166.0	2.00	2.00	0.00
1,320.0	20.40	33.15	1,298.6	150.4	98.3	179.7	2.00	2.00	0.00
1,360.0	21.20	33.15	1,336.0	162.3	106.0	193.9	2.00	2.00	0.00
1,400.0	22.00	33.15	1,373.2	174.6	114.1	208.6	2.00	2.00	0.00
1,440.0	22.80	33.15	1,410.2	187.4	122.4	223.8	2.00	2.00	0.00
1,480.0	23.60	33.15	1,446.9	200.6	131.0	239.6	2.00	2.00	0.00
1,507.1	24.14	33.15	1,471.7	209.8	137.0	250.6	2.00	2.00	0.00
1,520.0	24.14	33.15	1,483.5	214.2	139.9	255.8	0.00	0.00	0.00
1,560.0	24.14	33.15	1,520.0	227.9	148.9	272.2	0.00	0.00	0.00
1,600.0	24.14	33.15	1,556.5	241.6	157.8	288.6	0.00	0.00	0.00
1,640.0	24.14	33.15	1,593.0	255.3	166.8	304.9	0.00	0.00	0.00
1,680.0	24.14	33.15	1,629.5	269.0	175.7	321.3	0.00	0.00	0.00
1,720.0	24.14	33.15	1,666.0	282.7	184.6	337.6	0.00	0.00	0.00
1,760.0	24.14	33.15	1,702.5	296.4	193.6	354.0	0.00	0.00	0.00
1,800.0	24.14	33.15	1,739.0	310.1	202.5	370.4	0.00	0.00	0.00
1,840.0	24.14	33.15	1,775.5	323.8	211.5	386.7	0.00	0.00	0.00
1,880.0	24.14	33.15	1,812.0	337.5	220.4	403.1	0.00	0.00	0.00
1,920.0	24.14	33.15	1,848.5	351.2	229.4	419.4	0.00	0.00	0.00
1,960.0	24.14	33.15	1,885.0	364.9	238.3	435.8	0.00	0.00	0.00

Database:	Landmark	Local Co-ordinate Reference:	Well SRC GCC 11-11D
Company:	Synergy Resources	TVD Reference:	WELL @ 4871.0ft (Original Well Elev)
Project:	SEC.10-T5N-R66W	MD Reference:	WELL @ 4871.0ft (Original Well Elev)
Site:	SRC Aims/GCC Pad Sec.10-T5N-R66W	North Reference:	True
Well:	SRC GCC 11-11D	Survey Calculation Method:	Minimum Curvature
Wellbore:	Wellbore #1		
Design:	Plan #2 (9-21-11)		

Planned Survey									
Measured Depth (ft)	Inclination (°)	Azimuth (°)	Vertical Depth (ft)	+N/-S (ft)	+E/-W (ft)	Vertical Section (ft)	Dogleg Rate (°/100ft)	Build Rate (°/100ft)	Turn Rate (°/100ft)
2,000.0	24.14	33.15	1,921.5	378.6	247.3	452.2	0.00	0.00	0.00
2,040.0	24.14	33.15	1,958.0	392.3	256.2	468.5	0.00	0.00	0.00
2,080.0	24.14	33.15	1,994.5	406.0	265.2	484.9	0.00	0.00	0.00
2,120.0	24.14	33.15	2,031.0	419.7	274.1	501.3	0.00	0.00	0.00
2,160.0	24.14	33.15	2,067.5	433.4	283.1	517.6	0.00	0.00	0.00
2,200.0	24.14	33.15	2,104.0	447.1	292.0	534.0	0.00	0.00	0.00
2,240.0	24.14	33.15	2,140.5	460.7	301.0	550.3	0.00	0.00	0.00
2,280.0	24.14	33.15	2,177.0	474.4	309.9	566.7	0.00	0.00	0.00
2,320.0	24.14	33.15	2,213.5	488.1	318.9	583.1	0.00	0.00	0.00
2,360.0	24.14	33.15	2,250.0	501.8	327.8	599.4	0.00	0.00	0.00
2,400.0	24.14	33.15	2,286.5	515.5	336.7	615.8	0.00	0.00	0.00
2,440.0	24.14	33.15	2,323.0	529.2	345.7	632.1	0.00	0.00	0.00
2,480.0	24.14	33.15	2,359.5	542.9	354.6	648.5	0.00	0.00	0.00
2,520.0	24.14	33.15	2,396.0	556.6	363.6	664.9	0.00	0.00	0.00
2,560.0	24.14	33.15	2,432.5	570.3	372.5	681.2	0.00	0.00	0.00
2,600.0	24.14	33.15	2,469.0	584.0	381.5	697.6	0.00	0.00	0.00
2,640.0	24.14	33.15	2,505.5	597.7	390.4	713.9	0.00	0.00	0.00
2,680.0	24.14	33.15	2,542.0	611.4	399.4	730.3	0.00	0.00	0.00
2,720.0	24.14	33.15	2,578.5	625.1	408.3	746.7	0.00	0.00	0.00
2,760.0	24.14	33.15	2,615.0	638.8	417.3	763.0	0.00	0.00	0.00
2,800.0	24.14	33.15	2,651.5	652.5	426.2	779.4	0.00	0.00	0.00
2,840.0	24.14	33.15	2,688.0	666.2	435.2	795.7	0.00	0.00	0.00
2,880.0	24.14	33.15	2,724.5	679.9	444.1	812.1	0.00	0.00	0.00
2,920.0	24.14	33.15	2,761.0	693.6	453.1	828.5	0.00	0.00	0.00
2,960.0	24.14	33.15	2,797.5	707.3	462.0	844.8	0.00	0.00	0.00
3,000.0	24.14	33.15	2,834.0	721.0	471.0	861.2	0.00	0.00	0.00
3,040.0	24.14	33.15	2,870.5	734.7	479.9	877.5	0.00	0.00	0.00
3,080.0	24.14	33.15	2,907.0	748.4	488.8	893.9	0.00	0.00	0.00
3,120.0	24.14	33.15	2,943.5	762.1	497.8	910.3	0.00	0.00	0.00
3,160.0	24.14	33.15	2,980.0	775.8	506.7	926.6	0.00	0.00	0.00
3,200.0	24.14	33.15	3,016.5	789.5	515.7	943.0	0.00	0.00	0.00
3,240.0	24.14	33.15	3,053.0	803.2	524.6	959.3	0.00	0.00	0.00
3,280.0	24.14	33.15	3,089.5	816.9	533.6	975.7	0.00	0.00	0.00
3,320.0	24.14	33.15	3,126.0	830.6	542.5	992.1	0.00	0.00	0.00
3,360.0	24.14	33.15	3,162.5	844.3	551.5	1,008.4	0.00	0.00	0.00
3,400.0	24.14	33.15	3,199.0	858.0	560.4	1,024.8	0.00	0.00	0.00
3,440.0	24.14	33.15	3,235.5	871.7	569.4	1,041.1	0.00	0.00	0.00
3,480.0	24.14	33.15	3,272.0	885.4	578.3	1,057.5	0.00	0.00	0.00
3,520.0	24.14	33.15	3,308.5	899.1	587.3	1,073.9	0.00	0.00	0.00
3,560.0	24.14	33.15	3,345.0	912.8	596.2	1,090.2	0.00	0.00	0.00
3,600.0	24.14	33.15	3,381.5	926.5	605.2	1,106.6	0.00	0.00	0.00
3,640.0	24.14	33.15	3,418.0	940.2	614.1	1,122.9	0.00	0.00	0.00
3,680.0	24.14	33.15	3,454.5	953.8	623.0	1,139.3	0.00	0.00	0.00
3,720.0	24.14	33.15	3,491.0	967.5	632.0	1,155.7	0.00	0.00	0.00
3,760.0	24.14	33.15	3,527.5	981.2	640.9	1,172.0	0.00	0.00	0.00
3,800.0	24.14	33.15	3,564.0	994.9	649.9	1,188.4	0.00	0.00	0.00
3,840.0	24.14	33.15	3,600.5	1,008.6	658.8	1,204.7	0.00	0.00	0.00
3,880.0	24.14	33.15	3,637.0	1,022.3	667.8	1,221.1	0.00	0.00	0.00
3,920.0	24.14	33.15	3,673.5	1,036.0	676.7	1,237.5	0.00	0.00	0.00
3,960.0	24.14	33.15	3,710.0	1,049.7	685.7	1,253.8	0.00	0.00	0.00
4,000.0	24.14	33.15	3,746.5	1,063.4	694.6	1,270.2	0.00	0.00	0.00
4,040.0	24.14	33.15	3,783.0	1,077.1	703.6	1,286.5	0.00	0.00	0.00
4,080.0	24.14	33.15	3,819.5	1,090.8	712.5	1,302.9	0.00	0.00	0.00
4,120.0	24.14	33.15	3,856.0	1,104.5	721.5	1,319.3	0.00	0.00	0.00

Database:	Landmark	Local Co-ordinate Reference:	Well SRC GCC 11-11D
Company:	Synergy Resources	TVD Reference:	WELL @ 4871.0ft (Original Well Elev)
Project:	SEC.10-T5N-R66W	MD Reference:	WELL @ 4871.0ft (Original Well Elev)
Site:	SRC Aims/GCC Pad Sec.10-T5N-R66W	North Reference:	True
Well:	SRC GCC 11-11D	Survey Calculation Method:	Minimum Curvature
Wellbore:	Wellbore #1		
Design:	Plan #2 (9-21-11)		

Planned Survey									
Measured Depth (ft)	Inclination (°)	Azimuth (°)	Vertical Depth (ft)	+N/-S (ft)	+E/-W (ft)	Vertical Section (ft)	Dogleg Rate (°/100ft)	Build Rate (°/100ft)	Turn Rate (°/100ft)
4,160.0	24.14	33.15	3,892.5	1,118.2	730.4	1,335.6	0.00	0.00	0.00
4,200.0	24.14	33.15	3,929.0	1,131.9	739.4	1,352.0	0.00	0.00	0.00
4,240.0	24.14	33.15	3,965.6	1,145.6	748.3	1,368.4	0.00	0.00	0.00
4,280.0	24.14	33.15	4,002.1	1,159.3	757.3	1,384.7	0.00	0.00	0.00
4,320.0	24.14	33.15	4,038.6	1,173.0	766.2	1,401.1	0.00	0.00	0.00
4,360.0	24.14	33.15	4,075.1	1,186.7	775.1	1,417.4	0.00	0.00	0.00
4,400.0	24.14	33.15	4,111.6	1,200.4	784.1	1,433.8	0.00	0.00	0.00
4,440.0	24.14	33.15	4,148.1	1,214.1	793.0	1,450.2	0.00	0.00	0.00
4,480.0	24.14	33.15	4,184.6	1,227.8	802.0	1,466.5	0.00	0.00	0.00
4,520.0	24.14	33.15	4,221.1	1,241.5	810.9	1,482.9	0.00	0.00	0.00
4,560.0	24.14	33.15	4,257.6	1,255.2	819.9	1,499.2	0.00	0.00	0.00
4,600.0	24.14	33.15	4,294.1	1,268.9	828.8	1,515.6	0.00	0.00	0.00
4,640.0	24.14	33.15	4,330.6	1,282.6	837.8	1,532.0	0.00	0.00	0.00
4,680.0	24.14	33.15	4,367.1	1,296.3	846.7	1,548.3	0.00	0.00	0.00
4,720.0	24.14	33.15	4,403.6	1,310.0	855.7	1,564.7	0.00	0.00	0.00
4,760.0	24.14	33.15	4,440.1	1,323.7	864.6	1,581.0	0.00	0.00	0.00
4,800.0	24.14	33.15	4,476.6	1,337.4	873.6	1,597.4	0.00	0.00	0.00
4,840.0	24.14	33.15	4,513.1	1,351.1	882.5	1,613.8	0.00	0.00	0.00
4,880.0	24.14	33.15	4,549.6	1,364.8	891.5	1,630.1	0.00	0.00	0.00
4,920.0	24.14	33.15	4,586.1	1,378.5	900.4	1,646.5	0.00	0.00	0.00
4,960.0	24.14	33.15	4,622.6	1,392.2	909.4	1,662.8	0.00	0.00	0.00
5,000.0	24.14	33.15	4,659.1	1,405.9	918.3	1,679.2	0.00	0.00	0.00
5,040.0	24.14	33.15	4,695.6	1,419.6	927.2	1,695.6	0.00	0.00	0.00
5,080.0	24.14	33.15	4,732.1	1,433.3	936.2	1,711.9	0.00	0.00	0.00
5,120.0	24.14	33.15	4,768.6	1,446.9	945.1	1,728.3	0.00	0.00	0.00
5,160.0	24.14	33.15	4,805.1	1,460.6	954.1	1,744.6	0.00	0.00	0.00
5,200.0	24.14	33.15	4,841.6	1,474.3	963.0	1,761.0	0.00	0.00	0.00
5,240.0	24.14	33.15	4,878.1	1,488.0	972.0	1,777.4	0.00	0.00	0.00
5,280.0	24.14	33.15	4,914.6	1,501.7	980.9	1,793.7	0.00	0.00	0.00
5,320.0	24.14	33.15	4,951.1	1,515.4	989.9	1,810.1	0.00	0.00	0.00
5,360.0	24.14	33.15	4,987.6	1,529.1	998.8	1,826.4	0.00	0.00	0.00
5,400.0	24.14	33.15	5,024.1	1,542.8	1,007.8	1,842.8	0.00	0.00	0.00
5,440.0	24.14	33.15	5,060.6	1,556.5	1,016.7	1,859.2	0.00	0.00	0.00
5,480.0	24.14	33.15	5,097.1	1,570.2	1,025.7	1,875.5	0.00	0.00	0.00
5,520.0	24.14	33.15	5,133.6	1,583.9	1,034.6	1,891.9	0.00	0.00	0.00
5,560.0	24.14	33.15	5,170.1	1,597.6	1,043.6	1,908.2	0.00	0.00	0.00
5,600.0	24.14	33.15	5,206.6	1,611.3	1,052.5	1,924.6	0.00	0.00	0.00
5,640.0	24.14	33.15	5,243.1	1,625.0	1,061.5	1,941.0	0.00	0.00	0.00
5,680.0	24.14	33.15	5,279.6	1,638.7	1,070.4	1,957.3	0.00	0.00	0.00
5,720.0	24.14	33.15	5,316.1	1,652.4	1,079.3	1,973.7	0.00	0.00	0.00
5,760.0	24.14	33.15	5,352.6	1,666.1	1,088.3	1,990.0	0.00	0.00	0.00
5,800.0	24.14	33.15	5,389.1	1,679.8	1,097.2	2,006.4	0.00	0.00	0.00
5,840.0	24.14	33.15	5,425.6	1,693.5	1,106.2	2,022.8	0.00	0.00	0.00
5,880.0	24.14	33.15	5,462.1	1,707.2	1,115.1	2,039.1	0.00	0.00	0.00
5,920.0	24.14	33.15	5,498.6	1,720.9	1,124.1	2,055.5	0.00	0.00	0.00
5,960.0	24.14	33.15	5,535.1	1,734.6	1,133.0	2,071.8	0.00	0.00	0.00
6,000.0	24.14	33.15	5,571.6	1,748.3	1,142.0	2,088.2	0.00	0.00	0.00
6,040.0	24.14	33.15	5,608.1	1,762.0	1,150.9	2,104.6	0.00	0.00	0.00
6,080.0	24.14	33.15	5,644.6	1,775.7	1,159.9	2,120.9	0.00	0.00	0.00
6,120.0	24.14	33.15	5,681.1	1,789.4	1,168.8	2,137.3	0.00	0.00	0.00
6,160.0	24.14	33.15	5,717.6	1,803.1	1,177.8	2,153.6	0.00	0.00	0.00
6,200.0	24.14	33.15	5,754.1	1,816.8	1,186.7	2,170.0	0.00	0.00	0.00
6,240.0	24.14	33.15	5,790.6	1,830.5	1,195.7	2,186.4	0.00	0.00	0.00
6,278.5	24.14	33.15	5,825.7	1,843.7	1,204.3	2,202.1	0.00	0.00	0.00

Database:	Landmark	Local Co-ordinate Reference:	Well SRC GCC 11-11D
Company:	Synergy Resources	TVD Reference:	WELL @ 4871.0ft (Original Well Elev)
Project:	SEC.10-T5N-R66W	MD Reference:	WELL @ 4871.0ft (Original Well Elev)
Site:	SRC Aims/GCC Pad Sec.10-T5N-R66W	North Reference:	True
Well:	SRC GCC 11-11D	Survey Calculation Method:	Minimum Curvature
Wellbore:	Wellbore #1		
Design:	Plan #2 (9-21-11)		

Planned Survey									
Measured Depth (ft)	Inclination (°)	Azimuth (°)	Vertical Depth (ft)	+N/-S (ft)	+E/-W (ft)	Vertical Section (ft)	Dogleg Rate (°/100ft)	Build Rate (°/100ft)	Turn Rate (°/100ft)
6,280.0	24.11	33.15	5,827.1	1,844.2	1,204.6	2,202.7	2.00	-2.00	0.00
6,320.0	23.31	33.15	5,863.7	1,857.6	1,213.4	2,218.8	2.00	-2.00	0.00
6,360.0	22.51	33.15	5,900.6	1,870.7	1,221.9	2,234.4	2.00	-2.00	0.00
6,400.0	21.71	33.15	5,937.6	1,883.3	1,230.1	2,249.4	2.00	-2.00	0.00
6,440.0	20.91	33.15	5,974.9	1,895.4	1,238.1	2,264.0	2.00	-2.00	0.00
6,480.0	20.11	33.15	6,012.4	1,907.2	1,245.8	2,278.0	2.00	-2.00	0.00
6,520.0	19.31	33.15	6,050.0	1,918.5	1,253.1	2,291.5	2.00	-2.00	0.00
6,560.0	18.51	33.15	6,087.9	1,929.3	1,260.2	2,304.5	2.00	-2.00	0.00
6,600.0	17.71	33.15	6,125.9	1,939.7	1,267.0	2,316.9	2.00	-2.00	0.00
6,640.0	16.91	33.15	6,164.1	1,949.7	1,273.5	2,328.8	2.00	-2.00	0.00
6,680.0	16.11	33.15	6,202.4	1,959.2	1,279.8	2,340.2	2.00	-2.00	0.00
6,720.0	15.31	33.15	6,240.9	1,968.3	1,285.7	2,351.0	2.00	-2.00	0.00
6,760.0	14.51	33.15	6,279.6	1,976.9	1,291.3	2,361.3	2.00	-2.00	0.00
6,800.0	13.71	33.15	6,318.4	1,985.1	1,296.6	2,371.0	2.00	-2.00	0.00
6,840.0	12.91	33.15	6,357.3	1,992.8	1,301.7	2,380.3	2.00	-2.00	0.00
6,880.0	12.11	33.15	6,396.3	2,000.0	1,306.4	2,388.9	2.00	-2.00	0.00
6,920.0	11.31	33.15	6,435.5	2,006.8	1,310.9	2,397.0	2.00	-2.00	0.00
6,936.3	10.99	33.15	6,451.5	2,009.5	1,312.6	2,400.2	2.00	-2.00	0.00
TARGET BHL 661'FNL, 735'FWL									
6,960.0	10.51	33.15	6,474.8	2,013.2	1,315.0	2,404.6	2.00	-2.00	0.00
6,985.6	10.00	33.15	6,500.0	2,017.0	1,317.5	2,409.2	2.00	-2.00	0.00
DRILL TARGET 877'FNL, 594'FWL									
7,000.0	10.00	33.15	6,514.2	2,019.1	1,318.9	2,411.7	0.00	0.00	0.00
7,040.0	10.00	33.15	6,553.5	2,024.9	1,322.7	2,418.6	0.00	0.00	0.00
7,080.0	10.00	33.15	6,592.9	2,030.7	1,326.5	2,425.6	0.00	0.00	0.00
7,120.0	10.00	33.15	6,632.3	2,036.5	1,330.3	2,432.5	0.00	0.00	0.00
7,160.0	10.00	33.15	6,671.7	2,042.4	1,334.1	2,439.5	0.00	0.00	0.00
7,200.0	10.00	33.15	6,711.1	2,048.2	1,337.9	2,446.4	0.00	0.00	0.00
7,227.2	10.00	33.15	6,737.9	2,052.1	1,340.4	2,451.1	0.00	0.00	0.00
LEGAL BOX 400' X 400' 664'FNL, 737'FWL									
7,240.0	10.00	33.15	6,750.5	2,054.0	1,341.7	2,453.3	0.00	0.00	0.00
7,280.0	10.00	33.15	6,789.9	2,059.8	1,345.5	2,460.3	0.00	0.00	0.00
7,320.0	10.00	33.15	6,829.3	2,065.6	1,349.3	2,467.2	0.00	0.00	0.00
7,360.0	10.00	33.15	6,868.7	2,071.4	1,353.1	2,474.2	0.00	0.00	0.00
7,400.0	10.00	33.15	6,908.1	2,077.2	1,356.8	2,481.1	0.00	0.00	0.00
7,440.0	10.00	33.15	6,947.5	2,083.1	1,360.6	2,488.1	0.00	0.00	0.00
7,468.0	10.00	33.15	6,975.0	2,087.1	1,363.3	2,492.9	0.00	0.00	0.00
NIORARA									
7,480.0	10.00	33.15	6,986.9	2,088.9	1,364.4	2,495.0	0.00	0.00	0.00
7,520.0	10.00	33.15	7,026.3	2,094.7	1,368.2	2,502.0	0.00	0.00	0.00
7,560.0	10.00	33.15	7,065.6	2,100.5	1,372.0	2,508.9	0.00	0.00	0.00
7,600.0	10.00	33.15	7,105.0	2,106.3	1,375.8	2,515.9	0.00	0.00	0.00
7,640.0	10.00	33.15	7,144.4	2,112.1	1,379.6	2,522.8	0.00	0.00	0.00
7,680.0	10.00	33.15	7,183.8	2,118.0	1,383.4	2,529.8	0.00	0.00	0.00
7,720.0	10.00	33.15	7,223.2	2,123.8	1,387.2	2,536.7	0.00	0.00	0.00
7,760.0	10.00	33.15	7,262.6	2,129.6	1,391.0	2,543.6	0.00	0.00	0.00
7,800.0	10.00	33.15	7,302.0	2,135.4	1,394.8	2,550.6	0.00	0.00	0.00
7,840.0	10.00	33.15	7,341.4	2,141.2	1,398.6	2,557.5	0.00	0.00	0.00
7,880.0	10.00	33.15	7,380.8	2,147.0	1,402.4	2,564.5	0.00	0.00	0.00
7,920.0	10.00	33.15	7,420.2	2,152.8	1,406.2	2,571.4	0.00	0.00	0.00
7,960.0	10.00	33.15	7,459.6	2,158.7	1,410.0	2,578.4	0.00	0.00	0.00
8,000.0	10.00	33.15	7,499.0	2,164.5	1,413.8	2,585.3	0.00	0.00	0.00
8,040.0	10.00	33.15	7,538.4	2,170.3	1,417.6	2,592.3	0.00	0.00	0.00

Database:	Landmark	Local Co-ordinate Reference:	Well SRC GCC 11-11D
Company:	Synergy Resources	TVD Reference:	WELL @ 4871.0ft (Original Well Elev)
Project:	SEC.10-T5N-R66W	MD Reference:	WELL @ 4871.0ft (Original Well Elev)
Site:	SRC Aims/GCC Pad Sec.10-T5N-R66W	North Reference:	True
Well:	SRC GCC 11-11D	Survey Calculation Method:	Minimum Curvature
Wellbore:	Wellbore #1		
Design:	Plan #2 (9-21-11)		

Planned Survey										
Measured Depth (ft)	Inclination (°)	Azimuth (°)	Vertical Depth (ft)	+N/-S (ft)	+E/-W (ft)	Vertical Section (ft)	Dogleg Rate (°/100ft)	Build Rate (°/100ft)	Turn Rate (°/100ft)	
8,080.0	10.00	33.15	7,577.7	2,176.1	1,421.4	2,599.2	0.00	0.00	0.00	
8,120.0	10.00	33.15	7,617.1	2,181.9	1,425.2	2,606.2	0.00	0.00	0.00	
8,160.0	10.00	33.15	7,656.5	2,187.7	1,429.0	2,613.1	0.00	0.00	0.00	
8,200.0	10.00	33.15	7,695.9	2,193.6	1,432.8	2,620.0	0.00	0.00	0.00	
8,240.0	10.00	33.15	7,735.3	2,199.4	1,436.6	2,627.0	0.00	0.00	0.00	
8,280.0	10.00	33.15	7,774.7	2,205.2	1,440.4	2,633.9	0.00	0.00	0.00	
8,320.0	10.00	33.15	7,814.1	2,211.0	1,444.2	2,640.9	0.00	0.00	0.00	
8,360.0	10.00	33.15	7,853.5	2,216.8	1,448.0	2,647.8	0.00	0.00	0.00	
8,400.0	10.00	33.15	7,892.9	2,222.6	1,451.8	2,654.8	0.00	0.00	0.00	
8,440.0	10.00	33.15	7,932.3	2,228.4	1,455.6	2,661.7	0.00	0.00	0.00	
8,473.2	10.00	33.15	7,965.0	2,233.3	1,458.8	2,667.5	0.00	0.00	0.00	

Targets									
Target Name	Dip Angle (°)	Dip Dir. (°)	TVD (ft)	+N/-S (ft)	+E/-W (ft)	Northing (ft)	Easting (ft)	Latitude	Longitude
LEGAL BOX 400' X 400'	0.00	0.00	6,700.0	2,230.3	1,460.8	343,645.53	4,108,898.65	40.419662	-104.753713
- hit/miss target									
- plan misses target center by 218.3ft at 7227.2ft MD (6737.9 TVD, 2052.1 N, 1340.4 E)									
- Rectangle (sides W400.0 H400.0 D1,265.0)									
DRILL TARGET 877'F	0.00	0.00	6,500.0	2,017.0	1,317.5	343,423.43	4,108,768.15	40.419076	-104.754227
- plan hits target center									
- Point									
TARGET BHL 661'FN	0.00	0.00	6,400.0	2,233.3	1,458.8	343,648.41	4,108,896.47	40.419670	-104.753720
- plan misses target center by 272.3ft at 6936.3ft MD (6451.5 TVD, 2009.5 N, 1312.6 E)									
- Point									

Casing Points					
Measured Depth (ft)	Vertical Depth (ft)	Name		Casing Diameter (")	Hole Diameter (")
701.3	700.0	8 5/8"		8-5/8	12-1/4

Formations					
Measured Depth (ft)	Vertical Depth (ft)	Name	Lithology	Dip (°)	Dip Direction (°)
7,468.0	6,975.0	NIOBRARA		0.00	



Directional

Synergy Resources

SEC.10-T5N-R66W

SRC Aims/GCC Pad Sec.10-T5N-R66W

SRC GCC 11-11D

Wellbore #1

Plan #2 (9-21-11)

Anticollision Report

05 October, 2011

Company:	Synergy Resources	Local Co-ordinate Reference:	Well SRC GCC 11-11D
Project:	SEC.10-T5N-R66W	TVD Reference:	WELL @ 4871.0ft (Original Well Elev)
Reference Site:	SRC Aims/GCC Pad Sec.10-T5N-R66W	MD Reference:	WELL @ 4871.0ft (Original Well Elev)
Site Error:	0.0ft	North Reference:	True
Reference Well:	SRC GCC 11-11D	Survey Calculation Method:	Minimum Curvature
Well Error:	0.0ft	Output errors are at	2.00 sigma
Reference Wellbore	Wellbore #1	Database:	Landmark
Reference Design:	Plan #2 (9-21-11)	Offset TVD Reference:	Offset Datum

Reference	Plan #2 (9-21-11)		
Filter type:	NO GLOBAL FILTER: Using user defined selection & filtering criteria		
Interpolation Method:	Stations	Error Model:	ISCWSA
Depth Range:	Unlimited	Scan Method:	Closest Approach 3D
Results Limited by:	Maximum center-center distance of 10,000.0ft	Error Surface:	Elliptical Conic
Warning Levels Evaluated at:	2.00 Sigma		

Survey Tool Program	Date 10/5/2011			
From (ft)	To (ft)	Survey (Wellbore)	Tool Name	Description
0.0	8,473.2	Plan #2 (9-21-11) (Wellbore #1)	MWD	MWD - Standard

Summary						
Site Name	Reference Measured Depth (ft)	Offset Measured Depth (ft)	Distance Between Centres (ft)	Distance Between Ellipses (ft)	Separation Factor	Warning
Offset Well - Wellbore - Design						
SRC Aims/GCC Pad Sec.10-T5N-R66W						
SRC GCC 10VD - Wellbore #1 - Plan #2 (9-21-11)	300.0	300.0	13.3	12.2	11.844	CC
SRC GCC 10VD - Wellbore #1 - Plan #2 (9-21-11)	400.0	400.0	13.4	11.9	8.544	ES
SRC GCC 10VD - Wellbore #1 - Plan #2 (9-21-11)	700.0	700.3	20.1	17.2	6.775	SF
SRC GCC 12-11D - Wellbore #1 - Plan #2 (9-21-11)	200.0	200.0	15.7	15.0	23.217	CC, ES
SRC GCC 12-11D - Wellbore #1 - Plan #2 (9-21-11)	3,700.0	3,654.5	505.2	462.6	11.847	SF

Offset Design												
SRC Aims/GCC Pad Sec.10-T5N-R66W - SRC GCC 10VD - Wellbore #1 - Plan #2 (9-21-11)												
Survey Program: 0-MWD												
Reference												
Measured Depth (ft)	Vertical Depth (ft)	Measured Depth (ft)	Vertical Depth (ft)	Semi Major Axis Reference (ft)	Semi Major Axis Offset (ft)	Highside Toolface (°)	Offset Wellbore Centre +N/-S (ft)	Offset Wellbore Centre +E/-W (ft)	Distance Between Centres (ft)	Distance Between Ellipses (ft)	Minimum Separation (ft)	Separation Factor
0.0	0.0	0.0	0.0	0.0	0.0	-56.81	7.3	-11.1	13.3	13.3	0.00	N/A
100.0	100.0	100.0	100.0	0.1	0.1	-56.81	7.3	-11.1	13.3	13.1	0.22	59.218
200.0	200.0	200.0	200.0	0.3	0.3	-56.81	7.3	-11.1	13.3	12.6	0.67	19.739
300.0	300.0	300.0	300.0	0.6	0.6	-56.81	7.3	-11.1	13.3	12.2	1.12	11.844 CC
327.8	327.8	327.8	327.8	0.6	0.6	-90.55	7.3	-11.1	13.3	12.1	1.25	10.662
400.0	400.0	400.0	400.0	0.8	0.8	-97.43	7.3	-11.1	13.4	11.9	1.57	8.544 ES
500.0	499.8	500.0	499.9	1.0	1.0	-111.09	8.9	-10.4	14.6	12.6	2.02	7.211
600.0	599.5	600.1	599.9	1.3	1.2	-121.33	13.7	-8.3	16.9	14.4	2.48	6.810
700.0	698.7	700.3	699.7	1.5	1.5	-127.96	21.7	-4.8	20.1	17.2	2.97	6.775 SF
800.0	797.5	800.6	799.3	1.8	1.7	-131.86	32.9	0.1	24.0	20.5	3.50	6.865
900.0	895.6	901.0	898.4	2.2	2.1	-133.89	47.3	6.5	28.4	24.3	4.07	6.971
1,000.0	993.1	1,001.5	997.1	2.6	2.4	-134.71	64.9	14.2	33.2	28.5	4.71	7.046
1,100.0	1,089.6	1,102.1	1,095.1	3.1	2.8	-134.73	85.6	23.4	38.4	33.0	5.43	7.073
1,200.0	1,185.3	1,202.8	1,192.3	3.6	3.3	-134.24	109.5	33.9	44.0	37.8	6.25	7.048
1,300.0	1,279.8	1,303.5	1,288.6	4.2	3.8	-133.42	136.6	45.9	50.1	42.9	7.17	6.978
1,400.0	1,373.2	1,404.4	1,383.9	4.9	4.4	-132.38	166.7	59.2	56.5	48.3	8.22	6.873
1,507.1	1,471.7	1,511.3	1,484.2	5.7	5.1	-132.33	200.7	74.1	64.8	55.4	9.40	6.893
1,600.0	1,556.5	1,603.8	1,570.9	6.4	5.7	-133.38	230.1	87.1	73.1	62.7	10.39	7.032
1,700.0	1,647.7	1,703.4	1,664.3	7.2	6.3	-134.27	261.7	101.0	82.1	70.6	11.48	7.151
1,800.0	1,739.0	1,803.0	1,757.7	8.0	7.0	-134.99	293.4	115.0	91.1	78.5	12.57	7.245
1,900.0	1,830.2	1,902.6	1,851.1	8.7	7.6	-135.57	325.0	128.9	100.1	86.4	13.67	7.323
2,000.0	1,921.5	2,002.1	1,944.5	9.5	8.3	-136.06	356.6	142.9	109.1	94.3	14.77	7.387

CC - Min centre to center distance or convergent point, SF - min separation factor, ES - min ellipse separation

Offset Design SRC Aims/GCC Pad Sec.10-T5N-R66W - SRC GCC 10VD - Wellbore #1 - Plan #2 (9-21-11)													Offset Site Error: 0.0 ft	
Survey Program: 0-MWD													Offset Well Error: 0.0 ft	
Reference		Offset		Semi Major Axis			Distance							Warning
Measured Depth (ft)	Vertical Depth (ft)	Measured Depth (ft)	Vertical Depth (ft)	Reference (ft)	Offset (ft)	Highside Toolface (°)	Offset Wellbore Centre +N/-S (ft)	+E/-W (ft)	Between Centres (ft)	Between Ellipses (ft)	Minimum Separation (ft)	Separation Factor		
2,100.0	2,012.7	2,101.7	2,037.9	10.3	9.0	-136.48	388.3	156.8	118.1	102.3	15.88	7.441		
2,200.0	2,104.0	2,201.3	2,131.3	11.1	9.6	-136.83	419.9	170.8	127.2	110.2	16.98	7.488		
2,300.0	2,195.2	2,300.9	2,224.7	11.9	10.3	-137.14	451.6	184.8	136.2	118.1	18.09	7.528		
2,400.0	2,286.5	2,400.5	2,318.1	12.7	11.0	-137.41	483.2	198.7	145.3	126.0	19.21	7.563		
2,500.0	2,377.7	2,500.1	2,411.5	13.5	11.7	-137.65	514.9	212.7	154.3	134.0	20.32	7.593		
2,600.0	2,469.0	2,599.7	2,504.9	14.3	12.3	-137.86	546.5	226.6	163.3	141.9	21.44	7.620		
2,700.0	2,560.3	2,699.3	2,598.2	15.1	13.0	-138.05	578.1	240.6	172.4	149.8	22.55	7.644		
2,800.0	2,651.5	2,798.8	2,691.6	16.0	13.7	-138.22	609.8	254.5	181.4	157.8	23.67	7.666		
2,900.0	2,742.8	2,898.4	2,785.0	16.8	14.4	-138.37	641.4	268.5	190.5	165.7	24.79	7.686		
3,000.0	2,834.0	2,998.0	2,878.4	17.6	15.0	-138.51	673.1	282.4	199.5	173.6	25.90	7.703		
3,100.0	2,925.3	3,097.6	2,971.8	18.4	15.7	-138.64	704.7	296.4	208.6	181.6	27.02	7.719		
3,200.0	3,016.5	3,197.2	3,065.2	19.2	16.4	-138.76	736.3	310.3	217.7	189.5	28.14	7.734		
3,300.0	3,107.8	3,296.8	3,158.6	20.0	17.1	-138.87	768.0	324.3	226.7	197.4	29.26	7.747		
3,400.0	3,199.0	3,396.4	3,252.0	20.8	17.8	-138.97	799.6	338.2	235.8	205.4	30.38	7.760		
3,500.0	3,290.3	3,496.0	3,345.4	21.6	18.5	-139.06	831.3	352.2	244.8	213.3	31.50	7.771		
3,600.0	3,381.5	3,595.6	3,438.8	22.4	19.1	-139.15	862.9	366.1	253.9	221.3	32.62	7.782		
3,700.0	3,472.8	3,695.1	3,532.2	23.2	19.8	-139.23	894.6	380.1	262.9	229.2	33.75	7.792		
3,800.0	3,564.0	3,794.7	3,625.6	24.0	20.5	-139.30	926.2	394.0	272.0	237.1	34.87	7.801		
3,900.0	3,655.3	3,894.3	3,718.9	24.8	21.2	-139.37	957.8	408.0	281.1	245.1	35.99	7.809		
4,000.0	3,746.5	3,993.9	3,812.3	25.6	21.9	-139.44	989.5	421.9	290.1	253.0	37.11	7.817		
4,100.0	3,837.8	4,093.5	3,905.7	26.5	22.5	-139.50	1,021.1	435.9	299.2	260.9	38.23	7.825		
4,200.0	3,929.0	4,193.1	3,999.1	27.3	23.2	-139.56	1,052.8	449.8	308.2	268.9	39.36	7.832		
4,300.0	4,020.3	4,292.7	4,092.5	28.1	23.9	-139.61	1,084.4	463.8	317.3	276.8	40.48	7.838		
4,400.0	4,111.6	4,392.3	4,185.9	28.9	24.6	-139.66	1,116.1	477.7	326.4	284.7	41.60	7.845		
4,500.0	4,202.8	4,491.8	4,279.3	29.7	25.3	-139.71	1,147.7	491.7	335.4	292.7	42.72	7.851		
4,600.0	4,294.1	4,591.4	4,372.7	30.5	26.0	-139.76	1,179.3	505.6	344.5	300.6	43.85	7.856		
4,700.0	4,385.3	4,691.0	4,466.1	31.3	26.6	-139.80	1,211.0	519.6	353.5	308.6	44.97	7.861		
4,800.0	4,476.6	4,790.6	4,559.5	32.1	27.3	-139.84	1,242.6	533.5	362.6	316.5	46.09	7.866		
4,900.0	4,567.8	4,890.2	4,652.9	32.9	28.0	-139.88	1,274.3	547.5	371.7	324.4	47.22	7.871		
5,000.0	4,659.1	4,989.8	4,746.2	33.7	28.7	-139.92	1,305.9	561.4	380.7	332.4	48.34	7.876		
5,100.0	4,750.3	5,089.4	4,839.6	34.6	29.4	-139.96	1,337.5	575.4	389.8	340.3	49.47	7.880		
5,200.0	4,841.6	5,186.5	4,930.7	35.4	30.0	-140.00	1,368.3	588.9	398.9	348.4	50.55	7.892		
5,300.0	4,932.8	5,277.4	5,016.8	36.2	30.5	-140.28	1,395.2	600.8	409.7	358.3	51.37	7.974		
5,400.0	5,024.1	5,367.7	5,103.1	37.0	30.9	-140.83	1,419.4	611.5	422.5	370.5	51.99	8.126		
5,500.0	5,115.3	5,457.2	5,189.5	37.8	31.3	-141.62	1,441.0	621.0	437.5	385.1	52.43	8.344		
5,600.0	5,206.6	5,545.9	5,275.7	38.6	31.6	-142.60	1,459.9	629.3	454.7	402.0	52.70	8.628		
5,700.0	5,297.8	5,633.4	5,361.4	39.4	31.9	-143.75	1,476.1	636.5	474.3	421.4	52.83	8.978		
5,800.0	5,389.1	5,719.7	5,446.4	40.2	32.2	-145.01	1,489.8	642.5	496.1	443.3	52.82	9.393		
5,900.0	5,480.4	5,800.0	5,525.8	41.0	32.4	-146.28	1,500.4	647.2	520.5	467.7	52.75	9.867		
6,000.0	5,571.6	5,888.2	5,613.4	41.9	32.6	-147.75	1,509.7	651.3	547.2	494.7	52.51	10.420		
6,100.0	5,662.9	5,970.2	5,695.1	42.7	32.8	-149.15	1,516.2	654.1	576.5	524.2	52.26	11.031		
6,200.0	5,754.1	6,050.5	5,775.3	43.5	32.9	-150.55	1,520.4	656.0	608.2	556.3	51.96	11.705		
6,278.5	5,825.7	6,112.3	5,837.1	44.1	33.0	-151.64	1,522.2	656.8	634.9	583.2	51.72	12.277		
6,300.0	5,845.4	6,129.1	5,853.8	44.3	33.0	-152.00	1,522.5	656.9	642.4	590.8	51.61	12.448		
6,400.0	5,937.6	6,212.9	5,937.6	44.9	33.1	-153.68	1,522.9	657.1	677.0	625.9	51.06	13.257		
6,500.0	6,031.2	6,306.4	6,031.2	45.4	33.1	-155.22	1,522.9	657.1	709.3	658.7	50.57	14.025		
6,600.0	6,125.9	6,401.1	6,125.9	45.9	33.2	-156.50	1,522.9	657.1	738.8	688.6	50.20	14.716		
6,700.0	6,221.6	6,496.9	6,221.6	46.4	33.3	-157.57	1,522.9	657.1	765.4	715.5	49.93	15.331		
6,800.0	6,318.4	6,593.6	6,318.4	46.8	33.4	-158.45	1,522.9	657.1	789.1	739.4	49.72	15.872		
6,900.0	6,415.9	6,691.2	6,415.9	47.2	33.5	-159.17	1,522.9	657.1	809.7	760.1	49.56	16.338		
6,985.6	6,500.0	6,775.2	6,500.0	47.5	33.5	-159.67	1,522.9	657.1	824.8	775.4	49.45	16.680		
7,000.0	6,514.2	6,789.4	6,514.2	47.5	33.5	-159.73	1,522.9	657.1	827.2	777.7	49.46	16.723		

Company:	Synergy Resources	Local Co-ordinate Reference:	Well SRC GCC 11-11D
Project:	SEC.10-T5N-R66W	TVD Reference:	WELL @ 4871.0ft (Original Well Elev)
Reference Site:	SRC Aims/GCC Pad Sec.10-T5N-R66W	MD Reference:	WELL @ 4871.0ft (Original Well Elev)
Site Error:	0.0ft	North Reference:	True
Reference Well:	SRC GCC 11-11D	Survey Calculation Method:	Minimum Curvature
Well Error:	0.0ft	Output errors are at	2.00 sigma
Reference Wellbore	Wellbore #1	Database:	Landmark
Reference Design:	Plan #2 (9-21-11)	Offset TVD Reference:	Offset Datum

Offset Design												Offset Site Error:	0.0 ft
SRC Aims/GCC Pad Sec.10-T5N-R66W - SRC GCC 10VD - Wellbore #1 - Plan #2 (9-21-11)												Offset Well Error:	0.0 ft
Survey Program: 0-MWD													
Reference		Offset		Semi Major Axis			Distance						
Measured Depth (ft)	Vertical Depth (ft)	Measured Depth (ft)	Vertical Depth (ft)	Reference (ft)	Offset (ft)	Highside Toolface (°)	Offset Wellbore Centre +N/-S (ft)	+E/-W (ft)	Between Centres (ft)	Between Ellipses (ft)	Minimum Separation (ft)	Separation Factor	Warning
7,100.0	6,612.6	6,887.9	6,612.6	47.9	33.6	-160.14	1,522.9	657.1	843.5	793.9	49.59	17.010	
7,200.0	6,711.1	6,986.4	6,711.1	48.2	33.7	-160.53	1,522.9	657.1	859.9	810.1	49.73	17.291	
7,300.0	6,809.6	7,084.8	6,809.6	48.6	33.8	-160.91	1,522.9	657.1	876.3	826.4	49.88	17.567	
7,400.0	6,908.1	7,183.3	6,908.1	49.0	33.9	-161.28	1,522.9	657.1	892.7	842.7	50.05	17.837	
7,500.0	7,006.6	7,281.8	7,006.6	49.4	34.0	-161.63	1,522.9	657.1	909.2	859.0	50.23	18.103	
7,600.0	7,105.0	7,380.3	7,105.0	49.7	34.1	-161.96	1,522.9	657.1	925.8	875.3	50.41	18.363	
7,700.0	7,203.5	7,478.8	7,203.5	50.1	34.2	-162.29	1,522.9	657.1	942.3	891.7	50.61	18.618	
7,800.0	7,302.0	7,577.2	7,302.0	50.5	34.3	-162.61	1,522.9	657.1	958.9	908.1	50.82	18.867	
7,900.0	7,400.5	7,675.7	7,400.5	50.9	34.4	-162.91	1,522.9	657.1	975.5	924.4	51.04	19.112	
8,000.0	7,499.0	7,774.2	7,499.0	51.2	34.5	-163.20	1,522.9	657.1	992.1	940.9	51.27	19.352	
8,100.0	7,597.4	7,872.7	7,597.4	51.6	34.6	-163.49	1,522.9	657.1	1,008.8	957.3	51.50	19.586	
8,200.0	7,695.9	7,971.2	7,695.9	52.0	34.7	-163.76	1,522.9	657.1	1,025.5	973.7	51.75	19.816	
8,300.0	7,794.4	8,069.7	7,794.4	52.4	34.8	-164.03	1,522.9	657.1	1,042.2	990.2	52.00	20.041	
8,400.0	7,892.9	8,168.1	7,892.9	52.7	34.9	-164.29	1,522.9	657.1	1,058.9	1,006.6	52.26	20.262	
8,473.2	7,965.0	8,240.2	7,965.0	53.0	35.0	-164.47	1,522.9	657.1	1,071.1	1,018.7	52.45	20.420	

SRC Aims/GCC Pad Sec.10-T5N-R66W - SRC GCC 12-11D - Wellbore #1 - Plan #2 (9-21-11)													Offset Site Error:	0.0 ft
Survey Program: 0-MWD													Offset Well Error:	0.0 ft
Reference		Offset		Semi Major Axis			Distance							Warning
Measured Depth (ft)	Vertical Depth (ft)	Measured Depth (ft)	Vertical Depth (ft)	Reference (ft)	Offset (ft)	Highside Toolface (°)	Offset Wellbore Centre +N/-S (ft)	+E/-W (ft)	Between Centres (ft)	Between Ellipses (ft)	Minimum Separation (ft)	Separation Factor		
0.0	0.0	0.0	0.0	0.0	0.0	117.71	-7.3	13.9	15.7	15.7	0.00	N/A		
100.0	100.0	100.0	100.0	0.1	0.1	117.71	-7.3	13.9	15.7	15.4	0.22	69.650		
200.0	200.0	200.0	200.0	0.3	0.3	117.71	-7.3	13.9	15.7	15.0	0.67	23.217 CC, ES		
300.0	300.0	299.5	299.5	0.6	0.6	115.03	-7.3	15.6	17.2	16.1	1.11	15.454		
400.0	400.0	398.8	398.6	0.8	0.8	80.55	-7.3	20.8	21.7	20.1	1.56	13.943		
500.0	499.8	498.0	497.4	1.0	1.0	83.35	-7.0	29.2	28.6	26.6	2.02	14.183		
600.0	599.5	597.2	596.1	1.3	1.3	85.66	-4.7	40.4	36.6	34.1	2.50	14.630		
700.0	698.7	696.4	694.2	1.5	1.6	87.30	-0.2	54.0	45.6	42.5	3.05	14.938		
800.0	797.5	795.4	791.6	1.8	2.0	88.50	6.7	70.2	55.4	51.7	3.68	15.064		
900.0	895.6	894.3	888.3	2.2	2.4	89.41	15.8	88.8	66.1	61.7	4.40	15.017		
1,000.0	993.1	993.0	984.1	2.6	2.8	90.11	27.1	109.7	77.6	72.4	5.23	14.835		
1,100.0	1,089.6	1,091.6	1,078.9	3.1	3.4	90.65	40.7	133.1	89.9	83.8	6.18	14.558		
1,200.0	1,185.3	1,190.0	1,172.6	3.6	3.9	91.06	56.4	158.8	103.1	95.8	7.25	14.225		
1,300.0	1,279.8	1,288.4	1,265.2	4.2	4.6	91.41	74.3	186.8	117.0	108.5	8.44	13.866		
1,400.0	1,373.2	1,387.4	1,357.9	4.9	5.2	92.66	93.1	215.8	131.2	121.5	9.75	13.466		
1,507.1	1,471.7	1,493.1	1,457.0	5.7	6.0	95.18	113.1	246.7	146.9	135.7	11.26	13.052		
1,600.0	1,556.5	1,584.6	1,542.8	6.4	6.6	97.79	130.5	273.5	161.0	148.4	12.62	12.759		
1,700.0	1,647.7	1,683.2	1,635.2	7.2	7.3	100.14	149.2	302.3	176.4	162.4	14.08	12.531		
1,800.0	1,739.0	1,781.8	1,727.6	8.0	8.0	102.11	167.8	331.2	192.1	176.6	15.54	12.365		
1,900.0	1,830.2	1,880.3	1,820.0	8.7	8.7	103.79	186.5	360.0	208.0	191.0	16.99	12.241		
2,000.0	1,921.5	1,978.9	1,912.3	9.5	9.4	105.22	205.2	388.9	224.0	205.6	18.44	12.149		
2,100.0	2,012.7	2,077.5	2,004.7	10.3	10.1	106.46	223.9	417.7	240.2	220.3	19.88	12.079		
2,200.0	2,104.0	2,176.0	2,097.1	11.1	10.8	107.55	242.5	446.6	256.4	235.1	21.32	12.025		
2,300.0	2,195.2	2,274.6	2,189.5	11.9	11.5	108.51	261.2	475.4	272.7	250.0	22.76	11.984		
2,400.0	2,286.5	2,373.1	2,281.8	12.7	12.2	109.36	279.9	504.2	289.1	264.9	24.19	11.952		
2,500.0	2,377.7	2,471.7	2,374.2	13.5	12.9	110.11	298.6	533.1	305.6	280.0	25.62	11.926		
2,600.0	2,469.0	2,570.3	2,466.6	14.3	13.6	110.79	317.3	561.9	322.1	295.0	27.05	11.907		
2,700.0	2,560.3	2,668.8	2,559.0	15.1	14.3	111.41	335.9	590.8	338.6	310.1	28.47	11.891		
2,800.0	2,651.5	2,767.4	2,651.4	16.0	15.0	111.97	354.6	619.6	355.2	325.3	29.90	11.879		
2,900.0	2,742.8	2,866.0	2,743.7	16.8	15.7	112.47	373.3	648.5	371.8	340.4	31.32	11.870		
3,000.0	2,834.0	2,964.5	2,836.1	17.6	16.4	112.94	392.0	677.3	388.4	355.6	32.74	11.863		
3,100.0	2,925.3	3,063.1	2,928.5	18.4	17.1	113.36	410.7	706.1	405.0	370.9	34.16	11.858		
3,200.0	3,016.5	3,161.6	3,020.9	19.2	17.8	113.76	429.3	735.0	421.7	386.1	35.57	11.854		
3,300.0	3,107.8	3,260.2	3,113.2	20.0	18.5	114.12	448.0	763.8	438.4	401.4	36.99	11.851		
3,400.0	3,199.0	3,358.8	3,205.6	20.8	19.2	114.45	466.7	792.7	455.1	416.7	38.41	11.849		
3,500.0	3,290.3	3,457.3	3,298.0	21.6	19.9	114.77	485.4	821.5	471.8	432.0	39.82	11.848		
3,600.0	3,381.5	3,555.9	3,390.4	22.4	20.7	115.06	504.0	850.4	488.5	447.3	41.23	11.847		
3,700.0	3,472.8	3,654.5	3,482.8	23.2	21.4	115.33	522.7	879.2	505.2	462.6	42.65	11.847 SF		
3,800.0	3,564.0	3,753.0	3,575.1	24.0	22.1	115.58	541.4	908.0	522.0	477.9	44.06	11.847		
3,900.0	3,655.3	3,851.6	3,667.5	24.8	22.8	115.82	560.1	936.9	538.7	493.3	45.47	11.848		
4,000.0	3,746.5	3,950.1	3,759.9	25.6	23.5	116.04	578.8	965.7	555.5	508.6	46.88	11.849		
4,100.0	3,837.8	4,048.7	3,852.3	26.5	24.2	116.26	597.4	994.6	572.3	524.0	48.29	11.850		
4,200.0	3,929.0	4,147.3	3,944.7	27.3	24.9	116.45	616.1	1,023.4	589.0	539.3	49.70	11.852		
4,300.0	4,020.3	4,245.8	4,037.0	28.1	25.6	116.64	634.8	1,052.3	605.8	554.7	51.11	11.853		
4,400.0	4,111.6	4,344.4	4,129.4	28.9	26.3	116.82	653.5	1,081.1	622.6	570.1	52.52	11.855		
4,500.0	4,202.8	4,443.0	4,221.8	29.7	27.0	116.99	672.2	1,109.9	639.4	585.5	53.93	11.857		
4,600.0	4,294.1	4,541.5	4,314.2	30.5	27.7	117.15	690.8	1,138.8	656.2	600.9	55.34	11.859		
4,700.0	4,385.3	4,640.1	4,406.5	31.3	28.4	117.30	709.5	1,167.6	673.0	616.3	56.74	11.860		
4,800.0	4,476.6	4,738.6	4,498.9	32.1	29.2	117.44	728.2	1,196.5	689.8	631.7	58.15	11.862		
4,900.0	4,567.8	4,837.2	4,591.3	32.9	29.9	117.58	746.9	1,225.3	706.6	647.1	59.56	11.864		
5,000.0	4,659.1	4,935.8	4,683.7	33.7	30.6	117.71	765.6	1,254.2	723.5	662.5	60.97	11.866		
5,100.0	4,750.3	5,034.3	4,776.1	34.6	31.3	117.84	784.2	1,283.0	740.3	677.9	62.37	11.868		

COMPASS 2003.21 Build 46

Company:	Synergy Resources	Local Co-ordinate Reference:	Well SRC GCC 11-11D
Project:	SEC.10-T5N-R66W	TVD Reference:	WELL @ 4871.0ft (Original Well Elev)
Reference Site:	SRC Aims/GCC Pad Sec.10-T5N-R66W	MD Reference:	WELL @ 4871.0ft (Original Well Elev)
Site Error:	0.0ft	North Reference:	True
Reference Well:	SRC GCC 11-11D	Survey Calculation Method:	Minimum Curvature
Well Error:	0.0ft	Output errors are at	2.00 sigma
Reference Wellbore	Wellbore #1	Database:	Landmark
Reference Design:	Plan #2 (9-21-11)	Offset TVD Reference:	Offset Datum

Offset Design												Offset Site Error:	0.0ft
Survey Program: 0-MWD												Offset Well Error:	0.0ft
Reference		Offset		Semi Major Axis			Distance						
Measured Depth (ft)	Vertical Depth (ft)	Measured Depth (ft)	Vertical Depth (ft)	Reference (ft)	Offset (ft)	Highside Toolface (°)	Offset Wellbore Centre +N/-S (ft)	+E/-W (ft)	Between Centres (ft)	Between Ellipses (ft)	Minimum Separation (ft)	Separation Factor	Warning
5,200.0	4,841.6	5,132.9	4,868.4	35.4	32.0	117.96	802.9	1,311.8	757.1	693.3	63.78	11.870	
5,300.0	4,932.8	5,229.7	4,959.4	36.2	32.6	118.12	820.9	1,339.6	774.0	708.9	65.08	11.893	
5,400.0	5,024.1	5,325.3	5,050.2	37.0	33.1	118.49	837.1	1,364.7	791.2	725.0	66.20	11.952	
5,500.0	5,115.3	5,420.3	5,141.3	37.8	33.5	119.07	851.6	1,387.1	808.9	741.7	67.21	12.035	
5,600.0	5,206.6	5,514.5	5,232.6	38.6	33.9	119.84	864.4	1,406.8	827.1	759.0	68.11	12.143	
5,700.0	5,297.8	5,607.8	5,323.7	39.4	34.3	120.78	875.4	1,423.8	845.9	777.0	68.89	12.279	
5,800.0	5,389.1	5,700.0	5,414.3	40.2	34.6	121.86	884.7	1,438.1	865.5	795.9	69.55	12.443	
5,900.0	5,480.4	5,790.8	5,504.0	41.0	34.8	123.07	892.3	1,449.9	885.9	815.9	70.09	12.640	
6,000.0	5,571.6	5,880.2	5,592.7	41.9	35.1	124.39	898.3	1,459.1	907.5	837.0	70.51	12.871	
6,100.0	5,662.9	5,968.0	5,680.2	42.7	35.2	125.79	902.7	1,465.9	930.3	859.5	70.81	13.138	
6,200.0	5,754.1	6,054.2	5,766.1	43.5	35.4	127.25	905.5	1,470.3	954.4	883.4	71.00	13.443	
6,278.5	5,825.7	6,120.5	5,832.4	44.1	35.4	128.44	906.8	1,472.3	974.4	903.4	71.07	13.711	
6,300.0	5,845.4	6,138.5	5,850.4	44.3	35.4	128.86	907.0	1,472.6	980.1	909.0	71.05	13.794	
6,400.0	5,937.6	6,225.7	5,937.6	44.9	35.5	130.78	907.2	1,472.9	1,005.8	935.0	70.82	14.202	
6,500.0	6,031.2	6,319.2	6,031.2	45.4	35.6	132.59	907.2	1,472.9	1,030.2	959.6	70.54	14.603	
6,600.0	6,125.9	6,414.0	6,125.9	45.9	35.7	134.18	907.2	1,472.9	1,052.8	982.5	70.29	14.978	
6,700.0	6,221.6	6,509.7	6,221.6	46.4	35.7	135.55	907.2	1,472.9	1,073.6	1,003.5	70.07	15.322	
6,800.0	6,318.4	6,606.4	6,318.4	46.8	35.8	136.73	907.2	1,472.9	1,092.2	1,022.3	69.87	15.631	
6,900.0	6,415.9	6,704.0	6,415.9	47.2	35.9	137.73	907.2	1,472.9	1,108.5	1,038.8	69.71	15.903	
6,985.6	6,500.0	6,788.1	6,500.0	47.5	36.0	138.44	907.2	1,472.9	1,120.6	1,051.0	69.59	16.103	
7,000.0	6,514.2	6,802.2	6,514.2	47.5	36.0	138.52	907.2	1,472.9	1,122.5	1,052.9	69.59	16.129	
7,100.0	6,612.6	6,900.7	6,612.6	47.9	36.1	139.10	907.2	1,472.9	1,135.6	1,066.0	69.64	16.308	
7,200.0	6,711.1	6,999.2	6,711.1	48.2	36.2	139.66	907.2	1,472.9	1,148.9	1,079.2	69.69	16.487	
7,300.0	6,809.6	7,097.7	6,809.6	48.6	36.2	140.21	907.2	1,472.9	1,162.3	1,092.5	69.74	16.666	
7,400.0	6,908.1	7,196.2	6,908.1	49.0	36.3	140.75	907.2	1,472.9	1,175.8	1,106.0	69.80	16.845	
7,500.0	7,006.6	7,294.6	7,006.6	49.4	36.4	141.28	907.2	1,472.9	1,189.3	1,119.5	69.86	17.025	
7,600.0	7,105.0	7,393.1	7,105.0	49.7	36.5	141.79	907.2	1,472.9	1,203.0	1,133.1	69.93	17.204	
7,700.0	7,203.5	7,491.6	7,203.5	50.1	36.6	142.30	907.2	1,472.9	1,216.8	1,146.8	70.00	17.383	
7,800.0	7,302.0	7,590.1	7,302.0	50.5	36.7	142.79	907.2	1,472.9	1,230.6	1,160.6	70.08	17.561	
7,900.0	7,400.5	7,688.6	7,400.5	50.9	36.8	143.27	907.2	1,472.9	1,244.6	1,174.4	70.16	17.739	
8,000.0	7,499.0	7,787.0	7,499.0	51.2	36.9	143.74	907.2	1,472.9	1,258.6	1,188.4	70.25	17.917	
8,100.0	7,597.4	7,885.5	7,597.4	51.6	37.0	144.20	907.2	1,472.9	1,272.7	1,202.4	70.34	18.094	
8,200.0	7,695.9	7,984.0	7,695.9	52.0	37.1	144.65	907.2	1,472.9	1,286.9	1,216.5	70.44	18.271	
8,300.0	7,794.4	8,082.5	7,794.4	52.4	37.2	145.09	907.2	1,472.9	1,301.2	1,230.7	70.54	18.446	
8,400.0	7,892.9	8,181.0	7,892.9	52.7	37.3	145.52	907.2	1,472.9	1,315.6	1,244.9	70.65	18.621	
8,473.2	7,965.0	8,253.1	7,965.0	53.0	37.4	145.83	907.2	1,472.9	1,326.1	1,255.4	70.73	18.749	

Company:	Synergy Resources	Local Co-ordinate Reference:	Well SRC GCC 11-11D
Project:	SEC.10-T5N-R66W	TVD Reference:	WELL @ 4871.0ft (Original Well Elev)
Reference Site:	SRC Aims/GCC Pad Sec.10-T5N-R66W	MD Reference:	WELL @ 4871.0ft (Original Well Elev)
Site Error:	0.0ft	North Reference:	True
Reference Well:	SRC GCC 11-11D	Survey Calculation Method:	Minimum Curvature
Well Error:	0.0ft	Output errors are at	2.00 sigma
Reference Wellbore	Wellbore #1	Database:	Landmark
Reference Design:	Plan #2 (9-21-11)	Offset TVD Reference:	Offset Datum

Reference Depths are relative to WELL @ 4871.0ft (Original Well Elev) Coordinates are relative to: SRC GCC 11-11D
Offset Depths are relative to Offset Datum Coordinate System is US State Plane 1983, Wyoming Western Zone
Central Meridian is -110.083333 ° Grid Convergence at Surface is: 3.46°



Company:	Synergy Resources	Local Co-ordinate Reference:	Well SRC GCC 11-11D
Project:	SEC.10-T5N-R66W	TVD Reference:	WELL @ 4871.0ft (Original Well Elev)
Reference Site:	SRC Aims/GCC Pad Sec.10-T5N-R66W	MD Reference:	WELL @ 4871.0ft (Original Well Elev)
Site Error:	0.0ft	North Reference:	True
Reference Well:	SRC GCC 11-11D	Survey Calculation Method:	Minimum Curvature
Well Error:	0.0ft	Output errors are at	2.00 sigma
Reference Wellbore	Wellbore #1	Database:	Landmark
Reference Design:	Plan #2 (9-21-11)	Offset TVD Reference:	Offset Datum

Reference Depths are relative to WELL @ 4871.0ft (Original Well Elev) Coordinates are relative to: SRC GCC 11-11D
Offset Depths are relative to Offset Datum Coordinate System is US State Plane 1983, Wyoming Western Zone
Central Meridian is -110.083333 ° Grid Convergence at Surface is: 3.46°

