

# ENSIGN

## Directional

### Well Name: SRC GCC 12-11D

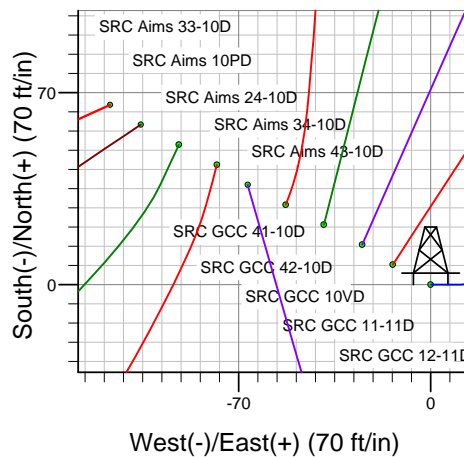
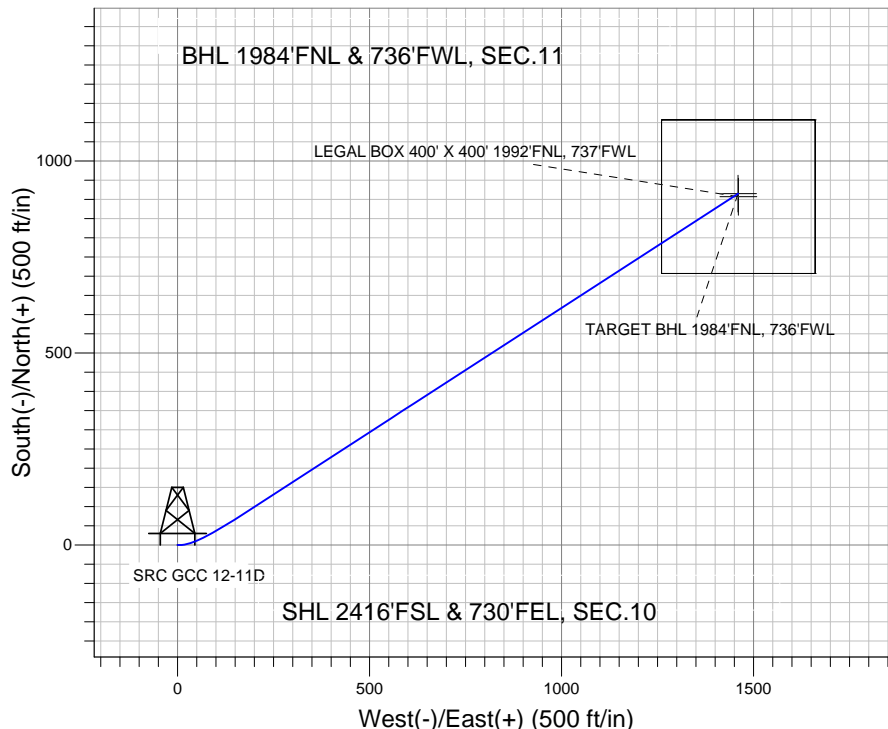
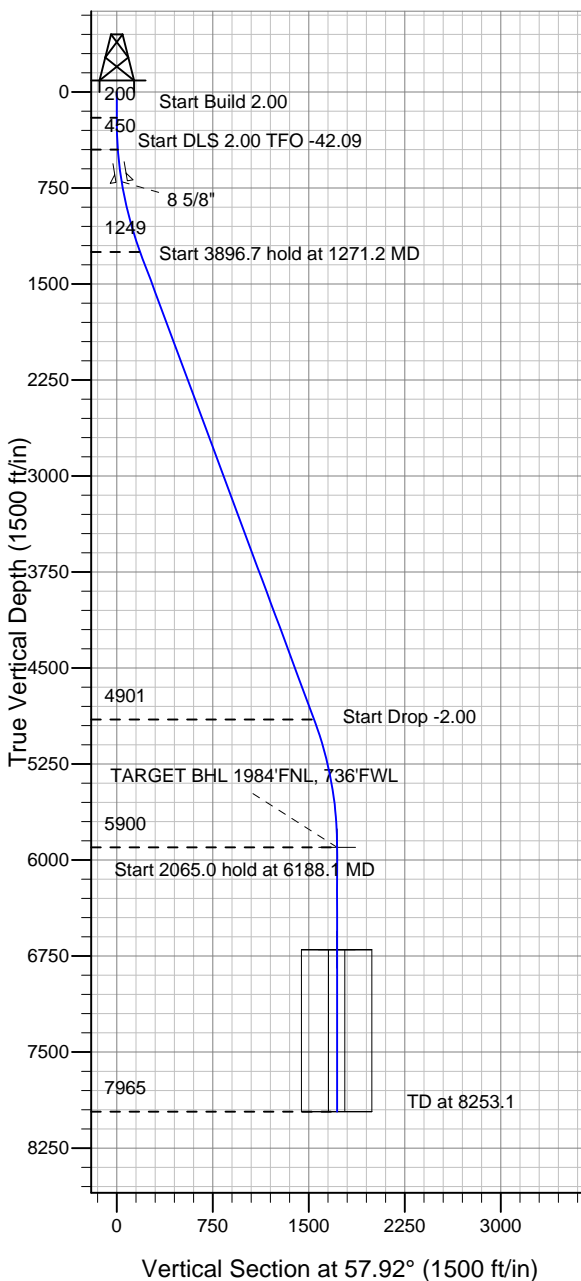
Surface Location: SRC Aims/GCC Pad Sec.10-T5N-R66W  
North American Datum 1983 US State Plane 1983 Wyoming Western Zone

Ground Elevation: 4858.0

+N/-S	+E/-W	Northing	Easting	Latitude	Longitude	Slot
0.0	0.0	341319.10	4107586.02	40.413520	-104.758910	

Original Well Elev WELL @ 4871.0ft (Original Well Elev)

### Synergy Resources



Azimuths to True North  
Magnetic North: 8.82°

Magnetic Field  
Strength: 53106.5nT  
Dip Angle: 67.05°  
Date: 10/5/2011  
Model: IGRF2010

### WELLBORE TARGET DETAILS (LAT/LONG)

Name	TVD	+N/-S	+E/-W	Latitude	Longitude	Shape
TARGET BHL 1984'FNL, 736'FWL	5900.0	914.5	1459.0	40.416030	-104.753670	Point
LEGAL BOX 400' X 400' 1992'FNL, 737'FWL	6700.0	906.5	1460.0	40.416008	-104.753666	Rectangle (Sides: L400.0 W400.0)

### SECTION DETAILS

Sec	MD	Inc	Azi	TVD	+N/-S	+E/-W	DLeg	TFace	VSec	Target
1	0.0	0.00	0.00	0.0	0.0	0.0	0.00	0.00	0.0	
2	200.0	0.00	0.00	200.0	0.0	0.0	0.00	0.00	0.0	
3	450.0	5.00	90.00	449.7	0.0	10.9	2.00	90.00	9.2	
4	1271.2	20.40	57.07	1249.0	78.3	167.9	2.00	-42.09	183.9	
5	5167.9	20.40	57.07	4901.3	816.8	1308.2	0.00	0.00	1542.2	
6	6188.1	0.00	0.00	5900.0	914.5	1459.0	2.00	180.00	1721.9	TARGET BHL 1984'FNL, 736'FWL
7	8253.1	0.00	0.00	7965.0	914.5	1459.0	0.00	0.00	1721.9	



## **Directional**

### **Synergy Resources**

**SEC.10-T5N-R66W**

**SRC Aims/GCC Pad Sec.10-T5N-R66W**

**SRC GCC 12-11D**

**Wellbore #1**

**Plan: Plan #2 (9-21-11)**

### **Standard Planning Report**

**05 October, 2011**

<b>Database:</b>	Landmark	<b>Local Co-ordinate Reference:</b>	Well SRC GCC 12-11D
<b>Company:</b>	Synergy Resources	<b>TVD Reference:</b>	WELL @ 4871.0ft (Original Well Elev)
<b>Project:</b>	SEC.10-T5N-R66W	<b>MD Reference:</b>	WELL @ 4871.0ft (Original Well Elev)
<b>Site:</b>	SRC Aims/GCC Pad Sec.10-T5N-R66W	<b>North Reference:</b>	True
<b>Well:</b>	SRC GCC 12-11D	<b>Survey Calculation Method:</b>	Minimum Curvature
<b>Wellbore:</b>	Wellbore #1		
<b>Design:</b>	Plan #2 (9-21-11)		

<b>Project</b>	SEC.10-T5N-R66W, Weld County, Colorado		
<b>Map System:</b>	US State Plane 1983	<b>System Datum:</b>	Mean Sea Level
<b>Geo Datum:</b>	North American Datum 1983		Using Well Reference Point
<b>Map Zone:</b>	Wyoming Western Zone		Using geodetic scale factor

Site	SRC Aims/GCC Pad Sec.10-T5N-R66W				
Site Position:		Northing:	341,383.04 ft	Latitude:	40.413700
From:	Lat/Long	Easting:	4,107,554.13 ft	Longitude:	-104.759010
Position Uncertainty:	0.0 ft	Slot Radius:	"	Grid Convergence:	3.46 °

Well	SRC GCC 12-11D					
Well Position	+N-S	-65.6 ft	Northing:	341,319.10 ft	Latitude:	40.413520
	+E-W	27.9 ft	Easting:	4,107,586.02 ft	Longitude:	-104.758910
Position Uncertainty		0.0 ft	Wellhead Elevation:	ft	Ground Level:	4,858.0 ft

<b>Wellbore</b>	Wellbore #1				
<b>Magnetics</b>	<b>Model Name</b>	<b>Sample Date</b>	<b>Declination (°)</b>	<b>Dip Angle (°)</b>	<b>Field Strength (nT)</b>
	IGRF2010	10/5/2011	8.82	67.05	53,107

<b>Design</b>	Plan #2 (9-21-11)			
<b>Audit Notes:</b>				
<b>Version:</b>	<b>Phase:</b>	PROTOTYPE	<b>Tie On Depth:</b>	0.0
<b>Vertical Section:</b>	<b>Depth From (TVD) (ft)</b>	<b>+N/-S (ft)</b>	<b>+E/-W (ft)</b>	<b>Direction (°)</b>
	0.0	0.0	0.0	57.92

<b>Plan Sections</b>										
Measured Depth (ft)	Inclination (°)	Azimuth (°)	Vertical Depth (ft)	+N/-S (ft)	+E/-W (ft)	Dogleg Rate (°/100ft)	Build Rate (°/100ft)	Turn Rate (°/100ft)	TFO (°)	Target
0.0	0.00	0.00	0.0	0.0	0.0	0.00	0.00	0.00	0.00	
200.0	0.00	0.00	200.0	0.0	0.0	0.00	0.00	0.00	0.00	
450.0	5.00	90.00	449.7	0.0	10.9	2.00	2.00	0.00	90.00	
1,271.2	20.40	57.07	1,249.0	78.3	167.9	2.00	1.88	-4.01	-42.09	
5,167.9	20.40	57.07	4,901.3	816.8	1,308.2	0.00	0.00	0.00	0.00	
6,188.1	0.00	0.00	5,900.0	914.5	1,459.0	2.00	-2.00	0.00	180.00	TARGET BHL 1984
8,253.1	0.00	0.00	7,965.0	914.5	1,459.0	0.00	0.00	0.00	0.00	

<b>Database:</b>	Landmark	<b>Local Co-ordinate Reference:</b>	Well SRC GCC 12-11D
<b>Company:</b>	Synergy Resources	<b>TVD Reference:</b>	WELL @ 4871.0ft (Original Well Elev)
<b>Project:</b>	SEC.10-T5N-R66W	<b>MD Reference:</b>	WELL @ 4871.0ft (Original Well Elev)
<b>Site:</b>	SRC Aims/GCC Pad Sec.10-T5N-R66W	<b>North Reference:</b>	True
<b>Well:</b>	SRC GCC 12-11D	<b>Survey Calculation Method:</b>	Minimum Curvature
<b>Wellbore:</b>	Wellbore #1		
<b>Design:</b>	Plan #2 (9-21-11)		

Planned Survey									
Measured Depth (ft)	Inclination (°)	Azimuth (°)	Vertical Depth (ft)	+N/-S (ft)	+E/-W (ft)	Vertical Section (ft)	Dogleg Rate (°/100ft)	Build Rate (°/100ft)	Turn Rate (°/100ft)
0.0	0.00	0.00	0.0	0.0	0.0	0.0	0.00	0.00	0.00
40.0	0.00	0.00	40.0	0.0	0.0	0.0	0.00	0.00	0.00
80.0	0.00	0.00	80.0	0.0	0.0	0.0	0.00	0.00	0.00
120.0	0.00	0.00	120.0	0.0	0.0	0.0	0.00	0.00	0.00
160.0	0.00	0.00	160.0	0.0	0.0	0.0	0.00	0.00	0.00
200.0	0.00	0.00	200.0	0.0	0.0	0.0	0.00	0.00	0.00
240.0	0.80	90.00	240.0	0.0	0.3	0.2	2.00	2.00	0.00
280.0	1.60	90.00	280.0	0.0	1.1	0.9	2.00	2.00	0.00
320.0	2.40	90.00	320.0	0.0	2.5	2.1	2.00	2.00	0.00
360.0	3.20	90.00	359.9	0.0	4.5	3.8	2.00	2.00	0.00
400.0	4.00	90.00	399.8	0.0	7.0	5.9	2.00	2.00	0.00
440.0	4.80	90.00	439.7	0.0	10.0	8.5	2.00	2.00	0.00
450.0	5.00	90.00	449.7	0.0	10.9	9.2	2.00	2.00	0.00
480.0	5.46	85.77	479.6	0.1	13.6	11.6	2.00	1.53	-14.10
520.0	6.11	81.15	519.4	0.6	17.6	15.2	2.00	1.63	-11.55
560.0	6.79	77.44	559.1	1.4	22.0	19.4	2.00	1.71	-9.28
600.0	7.50	74.41	598.8	2.6	26.9	24.2	2.00	1.77	-7.57
640.0	8.22	71.91	638.4	4.2	32.1	29.4	2.00	1.81	-6.26
680.0	8.96	69.81	678.0	6.2	37.7	35.3	2.00	1.84	-5.25
702.3	9.37	68.78	700.0	7.4	41.1	38.8	2.00	1.86	-4.61
8 5/8"									
720.0	9.71	68.03	717.4	8.5	43.8	41.6	2.00	1.87	-4.25
760.0	10.46	66.50	756.8	11.2	50.3	48.5	2.00	1.89	-3.82
800.0	11.22	65.18	796.1	14.3	57.1	56.0	2.00	1.90	-3.31
840.0	11.99	64.02	835.3	17.8	64.4	64.0	2.00	1.91	-2.89
880.0	12.76	63.00	874.4	21.6	72.1	72.5	2.00	1.92	-2.55
920.0	13.53	62.10	913.3	25.8	80.1	81.6	2.00	1.93	-2.26
960.0	14.30	61.29	952.1	30.3	88.6	91.2	2.00	1.94	-2.02
1,000.0	15.08	60.56	990.8	35.3	97.5	101.3	2.00	1.95	-1.82
1,040.0	15.86	59.90	1,029.4	40.6	106.7	112.0	2.00	1.95	-1.64
1,080.0	16.65	59.31	1,067.8	46.2	116.4	123.2	2.00	1.96	-1.49
1,120.0	17.43	58.76	1,106.0	52.3	126.4	134.9	2.00	1.96	-1.36
1,160.0	18.21	58.26	1,144.1	58.7	136.9	147.1	2.00	1.96	-1.25
1,200.0	19.00	57.80	1,182.0	65.4	147.7	159.9	2.00	1.97	-1.15
1,240.0	19.79	57.38	1,219.7	72.5	158.9	173.2	2.00	1.97	-1.06
1,271.2	20.40	57.07	1,249.0	78.3	167.9	183.9	2.00	1.97	-0.99
1,280.0	20.40	57.07	1,257.3	80.0	170.5	187.0	0.00	0.00	0.00
1,320.0	20.40	57.07	1,294.8	87.6	182.2	200.9	0.00	0.00	0.00
1,360.0	20.40	57.07	1,332.3	95.2	193.9	214.8	0.00	0.00	0.00
1,400.0	20.40	57.07	1,369.8	102.8	205.6	228.8	0.00	0.00	0.00
1,440.0	20.40	57.07	1,407.2	110.3	217.3	242.7	0.00	0.00	0.00
1,480.0	20.40	57.07	1,444.7	117.9	229.0	256.7	0.00	0.00	0.00
1,520.0	20.40	57.07	1,482.2	125.5	240.7	270.6	0.00	0.00	0.00
1,560.0	20.40	57.07	1,519.7	133.1	252.4	284.6	0.00	0.00	0.00
1,600.0	20.40	57.07	1,557.2	140.7	264.1	298.5	0.00	0.00	0.00
1,640.0	20.40	57.07	1,594.7	148.2	275.8	312.5	0.00	0.00	0.00
1,680.0	20.40	57.07	1,632.2	155.8	287.5	326.4	0.00	0.00	0.00
1,720.0	20.40	57.07	1,669.7	163.4	299.2	340.3	0.00	0.00	0.00
1,760.0	20.40	57.07	1,707.2	171.0	310.9	354.3	0.00	0.00	0.00
1,800.0	20.40	57.07	1,744.7	178.6	322.7	368.2	0.00	0.00	0.00
1,840.0	20.40	57.07	1,782.2	186.1	334.4	382.2	0.00	0.00	0.00
1,880.0	20.40	57.07	1,819.6	193.7	346.1	396.1	0.00	0.00	0.00
1,920.0	20.40	57.07	1,857.1	201.3	357.8	410.1	0.00	0.00	0.00
1,960.0	20.40	57.07	1,894.6	208.9	369.5	424.0	0.00	0.00	0.00

<b>Database:</b>	Landmark	<b>Local Co-ordinate Reference:</b>	Well SRC GCC 12-11D
<b>Company:</b>	Synergy Resources	<b>TVD Reference:</b>	WELL @ 4871.0ft (Original Well Elev)
<b>Project:</b>	SEC.10-T5N-R66W	<b>MD Reference:</b>	WELL @ 4871.0ft (Original Well Elev)
<b>Site:</b>	SRC Aims/GCC Pad Sec.10-T5N-R66W	<b>North Reference:</b>	True
<b>Well:</b>	SRC GCC 12-11D	<b>Survey Calculation Method:</b>	Minimum Curvature
<b>Wellbore:</b>	Wellbore #1		
<b>Design:</b>	Plan #2 (9-21-11)		

Planned Survey									
Measured Depth (ft)	Inclination (°)	Azimuth (°)	Vertical Depth (ft)	+N/-S (ft)	+E/-W (ft)	Vertical Section (ft)	Dogleg Rate (°/100ft)	Build Rate (°/100ft)	Turn Rate (°/100ft)
2,000.0	20.40	57.07	1,932.1	216.5	381.2	437.9	0.00	0.00	0.00
2,040.0	20.40	57.07	1,969.6	224.1	392.9	451.9	0.00	0.00	0.00
2,080.0	20.40	57.07	2,007.1	231.6	404.6	465.8	0.00	0.00	0.00
2,120.0	20.40	57.07	2,044.6	239.2	416.3	479.8	0.00	0.00	0.00
2,160.0	20.40	57.07	2,082.1	246.8	428.0	493.7	0.00	0.00	0.00
2,200.0	20.40	57.07	2,119.6	254.4	439.7	507.7	0.00	0.00	0.00
2,240.0	20.40	57.07	2,157.1	262.0	451.4	521.6	0.00	0.00	0.00
2,280.0	20.40	57.07	2,194.5	269.5	463.1	535.5	0.00	0.00	0.00
2,320.0	20.40	57.07	2,232.0	277.1	474.8	549.5	0.00	0.00	0.00
2,360.0	20.40	57.07	2,269.5	284.7	486.5	563.4	0.00	0.00	0.00
2,400.0	20.40	57.07	2,307.0	292.3	498.2	577.4	0.00	0.00	0.00
2,440.0	20.40	57.07	2,344.5	299.9	509.9	591.3	0.00	0.00	0.00
2,480.0	20.40	57.07	2,382.0	307.4	521.6	605.3	0.00	0.00	0.00
2,520.0	20.40	57.07	2,419.5	315.0	533.3	619.2	0.00	0.00	0.00
2,560.0	20.40	57.07	2,457.0	322.6	545.0	633.2	0.00	0.00	0.00
2,600.0	20.40	57.07	2,494.5	330.2	556.7	647.1	0.00	0.00	0.00
2,640.0	20.40	57.07	2,532.0	337.8	568.5	661.0	0.00	0.00	0.00
2,680.0	20.40	57.07	2,569.5	345.3	580.2	675.0	0.00	0.00	0.00
2,720.0	20.40	57.07	2,606.9	352.9	591.9	688.9	0.00	0.00	0.00
2,760.0	20.40	57.07	2,644.4	360.5	603.6	702.9	0.00	0.00	0.00
2,800.0	20.40	57.07	2,681.9	368.1	615.3	716.8	0.00	0.00	0.00
2,840.0	20.40	57.07	2,719.4	375.7	627.0	730.8	0.00	0.00	0.00
2,880.0	20.40	57.07	2,756.9	383.2	638.7	744.7	0.00	0.00	0.00
2,920.0	20.40	57.07	2,794.4	390.8	650.4	758.6	0.00	0.00	0.00
2,960.0	20.40	57.07	2,831.9	398.4	662.1	772.6	0.00	0.00	0.00
3,000.0	20.40	57.07	2,869.4	406.0	673.8	786.5	0.00	0.00	0.00
3,040.0	20.40	57.07	2,906.9	413.6	685.5	800.5	0.00	0.00	0.00
3,080.0	20.40	57.07	2,944.4	421.1	697.2	814.4	0.00	0.00	0.00
3,120.0	20.40	57.07	2,981.8	428.7	708.9	828.4	0.00	0.00	0.00
3,160.0	20.40	57.07	3,019.3	436.3	720.6	842.3	0.00	0.00	0.00
3,200.0	20.40	57.07	3,056.8	443.9	732.3	856.2	0.00	0.00	0.00
3,240.0	20.40	57.07	3,094.3	451.5	744.0	870.2	0.00	0.00	0.00
3,280.0	20.40	57.07	3,131.8	459.0	755.7	884.1	0.00	0.00	0.00
3,320.0	20.40	57.07	3,169.3	466.6	767.4	898.1	0.00	0.00	0.00
3,360.0	20.40	57.07	3,206.8	474.2	779.1	912.0	0.00	0.00	0.00
3,400.0	20.40	57.07	3,244.3	481.8	790.8	926.0	0.00	0.00	0.00
3,440.0	20.40	57.07	3,281.8	489.4	802.6	939.9	0.00	0.00	0.00
3,480.0	20.40	57.07	3,319.3	496.9	814.3	953.9	0.00	0.00	0.00
3,520.0	20.40	57.07	3,356.8	504.5	826.0	967.8	0.00	0.00	0.00
3,560.0	20.40	57.07	3,394.2	512.1	837.7	981.7	0.00	0.00	0.00
3,600.0	20.40	57.07	3,431.7	519.7	849.4	995.7	0.00	0.00	0.00
3,640.0	20.40	57.07	3,469.2	527.3	861.1	1,009.6	0.00	0.00	0.00
3,680.0	20.40	57.07	3,506.7	534.8	872.8	1,023.6	0.00	0.00	0.00
3,720.0	20.40	57.07	3,544.2	542.4	884.5	1,037.5	0.00	0.00	0.00
3,760.0	20.40	57.07	3,581.7	550.0	896.2	1,051.5	0.00	0.00	0.00
3,800.0	20.40	57.07	3,619.2	557.6	907.9	1,065.4	0.00	0.00	0.00
3,840.0	20.40	57.07	3,656.7	565.2	919.6	1,079.3	0.00	0.00	0.00
3,880.0	20.40	57.07	3,694.2	572.8	931.3	1,093.3	0.00	0.00	0.00
3,920.0	20.40	57.07	3,731.7	580.3	943.0	1,107.2	0.00	0.00	0.00
3,960.0	20.40	57.07	3,769.1	587.9	954.7	1,121.2	0.00	0.00	0.00
4,000.0	20.40	57.07	3,806.6	595.5	966.4	1,135.1	0.00	0.00	0.00
4,040.0	20.40	57.07	3,844.1	603.1	978.1	1,149.1	0.00	0.00	0.00
4,080.0	20.40	57.07	3,881.6	610.7	989.8	1,163.0	0.00	0.00	0.00
4,120.0	20.40	57.07	3,919.1	618.2	1,001.5	1,177.0	0.00	0.00	0.00

<b>Database:</b>	Landmark	<b>Local Co-ordinate Reference:</b>	Well SRC GCC 12-11D
<b>Company:</b>	Synergy Resources	<b>TVD Reference:</b>	WELL @ 4871.0ft (Original Well Elev)
<b>Project:</b>	SEC.10-T5N-R66W	<b>MD Reference:</b>	WELL @ 4871.0ft (Original Well Elev)
<b>Site:</b>	SRC Aims/GCC Pad Sec.10-T5N-R66W	<b>North Reference:</b>	True
<b>Well:</b>	SRC GCC 12-11D	<b>Survey Calculation Method:</b>	Minimum Curvature
<b>Wellbore:</b>	Wellbore #1		
<b>Design:</b>	Plan #2 (9-21-11)		

Planned Survey									
Measured Depth (ft)	Inclination (°)	Azimuth (°)	Vertical Depth (ft)	+N/-S (ft)	+E/-W (ft)	Vertical Section (ft)	Dogleg Rate (°/100ft)	Build Rate (°/100ft)	Turn Rate (°/100ft)
4,160.0	20.40	57.07	3,956.6	625.8	1,013.2	1,190.9	0.00	0.00	0.00
4,200.0	20.40	57.07	3,994.1	633.4	1,024.9	1,204.8	0.00	0.00	0.00
4,240.0	20.40	57.07	4,031.6	641.0	1,036.6	1,218.8	0.00	0.00	0.00
4,280.0	20.40	57.07	4,069.1	648.6	1,048.4	1,232.7	0.00	0.00	0.00
4,320.0	20.40	57.07	4,106.6	656.1	1,060.1	1,246.7	0.00	0.00	0.00
4,360.0	20.40	57.07	4,144.1	663.7	1,071.8	1,260.6	0.00	0.00	0.00
4,400.0	20.40	57.07	4,181.5	671.3	1,083.5	1,274.6	0.00	0.00	0.00
4,440.0	20.40	57.07	4,219.0	678.9	1,095.2	1,288.5	0.00	0.00	0.00
4,480.0	20.40	57.07	4,256.5	686.5	1,106.9	1,302.4	0.00	0.00	0.00
4,520.0	20.40	57.07	4,294.0	694.0	1,118.6	1,316.4	0.00	0.00	0.00
4,560.0	20.40	57.07	4,331.5	701.6	1,130.3	1,330.3	0.00	0.00	0.00
4,600.0	20.40	57.07	4,369.0	709.2	1,142.0	1,344.3	0.00	0.00	0.00
4,640.0	20.40	57.07	4,406.5	716.8	1,153.7	1,358.2	0.00	0.00	0.00
4,680.0	20.40	57.07	4,444.0	724.4	1,165.4	1,372.2	0.00	0.00	0.00
4,720.0	20.40	57.07	4,481.5	731.9	1,177.1	1,386.1	0.00	0.00	0.00
4,760.0	20.40	57.07	4,519.0	739.5	1,188.8	1,400.0	0.00	0.00	0.00
4,800.0	20.40	57.07	4,556.4	747.1	1,200.5	1,414.0	0.00	0.00	0.00
4,840.0	20.40	57.07	4,593.9	754.7	1,212.2	1,427.9	0.00	0.00	0.00
4,880.0	20.40	57.07	4,631.4	762.3	1,223.9	1,441.9	0.00	0.00	0.00
4,920.0	20.40	57.07	4,668.9	769.8	1,235.6	1,455.8	0.00	0.00	0.00
4,960.0	20.40	57.07	4,706.4	777.4	1,247.3	1,469.8	0.00	0.00	0.00
5,000.0	20.40	57.07	4,743.9	785.0	1,259.0	1,483.7	0.00	0.00	0.00
5,040.0	20.40	57.07	4,781.4	792.6	1,270.7	1,497.7	0.00	0.00	0.00
5,080.0	20.40	57.07	4,818.9	800.2	1,282.4	1,511.6	0.00	0.00	0.00
5,120.0	20.40	57.07	4,856.4	807.7	1,294.2	1,525.5	0.00	0.00	0.00
5,160.0	20.40	57.07	4,893.9	815.3	1,305.9	1,539.5	0.00	0.00	0.00
5,167.9	20.40	57.07	4,901.3	816.8	1,308.2	1,542.2	0.00	0.00	0.00
5,200.0	19.76	57.07	4,931.4	822.8	1,317.4	1,553.3	2.00	-2.00	0.00
5,240.0	18.96	57.07	4,969.2	830.0	1,328.5	1,566.5	2.00	-2.00	0.00
5,280.0	18.16	57.07	5,007.1	836.9	1,339.2	1,579.2	2.00	-2.00	0.00
5,320.0	17.36	57.07	5,045.2	843.6	1,349.5	1,591.5	2.00	-2.00	0.00
5,360.0	16.56	57.07	5,083.4	849.9	1,359.3	1,603.1	2.00	-2.00	0.00
5,400.0	15.76	57.07	5,121.8	856.0	1,368.6	1,614.2	2.00	-2.00	0.00
5,440.0	14.96	57.07	5,160.4	861.7	1,377.5	1,624.8	2.00	-2.00	0.00
5,480.0	14.16	57.07	5,199.1	867.2	1,386.0	1,634.9	2.00	-2.00	0.00
5,520.0	13.36	57.07	5,238.0	872.4	1,393.9	1,644.4	2.00	-2.00	0.00
5,560.0	12.56	57.07	5,277.0	877.2	1,401.5	1,653.4	2.00	-2.00	0.00
5,600.0	11.76	57.07	5,316.1	881.8	1,408.5	1,661.8	2.00	-2.00	0.00
5,640.0	10.96	57.07	5,355.3	886.1	1,415.2	1,669.7	2.00	-2.00	0.00
5,680.0	10.16	57.07	5,394.6	890.1	1,421.3	1,677.0	2.00	-2.00	0.00
5,720.0	9.36	57.07	5,434.0	893.8	1,427.0	1,683.8	2.00	-2.00	0.00
5,760.0	8.56	57.07	5,473.5	897.2	1,432.2	1,690.0	2.00	-2.00	0.00
5,800.0	7.76	57.07	5,513.1	900.3	1,437.0	1,695.7	2.00	-2.00	0.00
5,840.0	6.96	57.07	5,552.8	903.0	1,441.3	1,700.8	2.00	-2.00	0.00
5,880.0	6.16	57.07	5,592.5	905.5	1,445.1	1,705.4	2.00	-2.00	0.00
5,920.0	5.36	57.07	5,632.3	907.7	1,448.5	1,709.4	2.00	-2.00	0.00
5,960.0	4.56	57.07	5,672.2	909.6	1,451.4	1,712.9	2.00	-2.00	0.00
6,000.0	3.76	57.07	5,712.1	911.2	1,453.8	1,715.8	2.00	-2.00	0.00
6,040.0	2.96	57.07	5,752.0	912.4	1,455.8	1,718.1	2.00	-2.00	0.00
6,080.0	2.16	57.07	5,792.0	913.4	1,457.3	1,719.9	2.00	-2.00	0.00
6,120.0	1.36	57.07	5,831.9	914.1	1,458.3	1,721.1	2.00	-2.00	0.00
6,160.0	0.56	57.07	5,871.9	914.4	1,458.9	1,721.8	2.00	-2.00	0.00
6,188.1	0.00	0.00	5,900.0	914.5	1,459.0	1,721.9	2.00	-2.00	0.00
TARGET BHL 1984'FNL, 736'FWL									

<b>Database:</b>	Landmark	<b>Local Co-ordinate Reference:</b>	Well SRC GCC 12-11D
<b>Company:</b>	Synergy Resources	<b>TVD Reference:</b>	WELL @ 4871.0ft (Original Well Elev)
<b>Project:</b>	SEC.10-T5N-R66W	<b>MD Reference:</b>	WELL @ 4871.0ft (Original Well Elev)
<b>Site:</b>	SRC Aims/GCC Pad Sec.10-T5N-R66W	<b>North Reference:</b>	True
<b>Well:</b>	SRC GCC 12-11D	<b>Survey Calculation Method:</b>	Minimum Curvature
<b>Wellbore:</b>	Wellbore #1		
<b>Design:</b>	Plan #2 (9-21-11)		

Planned Survey									
Measured Depth (ft)	Inclination (°)	Azimuth (°)	Vertical Depth (ft)	+N/-S (ft)	+E/-W (ft)	Vertical Section (ft)	Dogleg Rate (°/100ft)	Build Rate (°/100ft)	Turn Rate (°/100ft)
6,200.0	0.00	0.00	5,911.9	914.5	1,459.0	1,721.9	0.00	0.00	0.00
6,240.0	0.00	0.00	5,951.9	914.5	1,459.0	1,721.9	0.00	0.00	0.00
6,280.0	0.00	0.00	5,991.9	914.5	1,459.0	1,721.9	0.00	0.00	0.00
6,320.0	0.00	0.00	6,031.9	914.5	1,459.0	1,721.9	0.00	0.00	0.00
6,360.0	0.00	0.00	6,071.9	914.5	1,459.0	1,721.9	0.00	0.00	0.00
6,400.0	0.00	0.00	6,111.9	914.5	1,459.0	1,721.9	0.00	0.00	0.00
6,440.0	0.00	0.00	6,151.9	914.5	1,459.0	1,721.9	0.00	0.00	0.00
6,480.0	0.00	0.00	6,191.9	914.5	1,459.0	1,721.9	0.00	0.00	0.00
6,520.0	0.00	0.00	6,231.9	914.5	1,459.0	1,721.9	0.00	0.00	0.00
6,560.0	0.00	0.00	6,271.9	914.5	1,459.0	1,721.9	0.00	0.00	0.00
6,600.0	0.00	0.00	6,311.9	914.5	1,459.0	1,721.9	0.00	0.00	0.00
6,640.0	0.00	0.00	6,351.9	914.5	1,459.0	1,721.9	0.00	0.00	0.00
6,680.0	0.00	0.00	6,391.9	914.5	1,459.0	1,721.9	0.00	0.00	0.00
6,720.0	0.00	0.00	6,431.9	914.5	1,459.0	1,721.9	0.00	0.00	0.00
6,760.0	0.00	0.00	6,471.9	914.5	1,459.0	1,721.9	0.00	0.00	0.00
6,800.0	0.00	0.00	6,511.9	914.5	1,459.0	1,721.9	0.00	0.00	0.00
6,840.0	0.00	0.00	6,551.9	914.5	1,459.0	1,721.9	0.00	0.00	0.00
6,880.0	0.00	0.00	6,591.9	914.5	1,459.0	1,721.9	0.00	0.00	0.00
6,920.0	0.00	0.00	6,631.9	914.5	1,459.0	1,721.9	0.00	0.00	0.00
6,960.0	0.00	0.00	6,671.9	914.5	1,459.0	1,721.9	0.00	0.00	0.00
6,988.1	0.00	0.00	6,700.0	914.5	1,459.0	1,721.9	0.00	0.00	0.00
LEGAL BOX 400' X 400' 1992'FNL, 737'FWL									
7,000.0	0.00	0.00	6,711.9	914.5	1,459.0	1,721.9	0.00	0.00	0.00
7,040.0	0.00	0.00	6,751.9	914.5	1,459.0	1,721.9	0.00	0.00	0.00
7,080.0	0.00	0.00	6,791.9	914.5	1,459.0	1,721.9	0.00	0.00	0.00
7,120.0	0.00	0.00	6,831.9	914.5	1,459.0	1,721.9	0.00	0.00	0.00
7,160.0	0.00	0.00	6,871.9	914.5	1,459.0	1,721.9	0.00	0.00	0.00
7,200.0	0.00	0.00	6,911.9	914.5	1,459.0	1,721.9	0.00	0.00	0.00
7,240.0	0.00	0.00	6,951.9	914.5	1,459.0	1,721.9	0.00	0.00	0.00
7,280.0	0.00	0.00	6,991.9	914.5	1,459.0	1,721.9	0.00	0.00	0.00
7,320.0	0.00	0.00	7,031.9	914.5	1,459.0	1,721.9	0.00	0.00	0.00
7,360.0	0.00	0.00	7,071.9	914.5	1,459.0	1,721.9	0.00	0.00	0.00
7,400.0	0.00	0.00	7,111.9	914.5	1,459.0	1,721.9	0.00	0.00	0.00
7,440.0	0.00	0.00	7,151.9	914.5	1,459.0	1,721.9	0.00	0.00	0.00
7,480.0	0.00	0.00	7,191.9	914.5	1,459.0	1,721.9	0.00	0.00	0.00
7,520.0	0.00	0.00	7,231.9	914.5	1,459.0	1,721.9	0.00	0.00	0.00
7,560.0	0.00	0.00	7,271.9	914.5	1,459.0	1,721.9	0.00	0.00	0.00
7,600.0	0.00	0.00	7,311.9	914.5	1,459.0	1,721.9	0.00	0.00	0.00
7,640.0	0.00	0.00	7,351.9	914.5	1,459.0	1,721.9	0.00	0.00	0.00
7,680.0	0.00	0.00	7,391.9	914.5	1,459.0	1,721.9	0.00	0.00	0.00
7,720.0	0.00	0.00	7,431.9	914.5	1,459.0	1,721.9	0.00	0.00	0.00
7,760.0	0.00	0.00	7,471.9	914.5	1,459.0	1,721.9	0.00	0.00	0.00
7,800.0	0.00	0.00	7,511.9	914.5	1,459.0	1,721.9	0.00	0.00	0.00
7,840.0	0.00	0.00	7,551.9	914.5	1,459.0	1,721.9	0.00	0.00	0.00
7,880.0	0.00	0.00	7,591.9	914.5	1,459.0	1,721.9	0.00	0.00	0.00
7,920.0	0.00	0.00	7,631.9	914.5	1,459.0	1,721.9	0.00	0.00	0.00
7,960.0	0.00	0.00	7,671.9	914.5	1,459.0	1,721.9	0.00	0.00	0.00
8,000.0	0.00	0.00	7,711.9	914.5	1,459.0	1,721.9	0.00	0.00	0.00
8,040.0	0.00	0.00	7,751.9	914.5	1,459.0	1,721.9	0.00	0.00	0.00
8,080.0	0.00	0.00	7,791.9	914.5	1,459.0	1,721.9	0.00	0.00	0.00
8,120.0	0.00	0.00	7,831.9	914.5	1,459.0	1,721.9	0.00	0.00	0.00
8,160.0	0.00	0.00	7,871.9	914.5	1,459.0	1,721.9	0.00	0.00	0.00
8,200.0	0.00	0.00	7,911.9	914.5	1,459.0	1,721.9	0.00	0.00	0.00

<b>Database:</b>	Landmark	<b>Local Co-ordinate Reference:</b>	Well SRC GCC 12-11D
<b>Company:</b>	Synergy Resources	<b>TVD Reference:</b>	WELL @ 4871.0ft (Original Well Elev)
<b>Project:</b>	SEC.10-T5N-R66W	<b>MD Reference:</b>	WELL @ 4871.0ft (Original Well Elev)
<b>Site:</b>	SRC Aims/GCC Pad Sec.10-T5N-R66W	<b>North Reference:</b>	True
<b>Well:</b>	SRC GCC 12-11D	<b>Survey Calculation Method:</b>	Minimum Curvature
<b>Wellbore:</b>	Wellbore #1		
<b>Design:</b>	Plan #2 (9-21-11)		

Planned Survey									
Measured Depth (ft)	Inclination (°)	Azimuth (°)	Vertical Depth (ft)	+N/-S (ft)	+E/-W (ft)	Vertical Section (ft)	Dogleg Rate (°/100ft)	Build Rate (°/100ft)	Turn Rate (°/100ft)
8,240.0	0.00	0.00	7,951.9	914.5	1,459.0	1,721.9	0.00	0.00	0.00
8,253.1	0.00	0.00	7,965.0	914.5	1,459.0	1,721.9	0.00	0.00	0.00

Targets									
Target Name	Dip Angle (°)	Dip Dir. (°)	TVD (ft)	+N/-S (ft)	+E/-W (ft)	Northing (ft)	Easting (ft)	Latitude	Longitude
- hit/miss target									
- Shape									
LEGAL BOX 400' X 400'	0.00	0.00	6,700.0	906.5	1,460.0	342,314.43	4,108,992.19	40.416008	-104.753666
- plan misses target center by 8.1ft at 6988.1ft MD (6700.0 TVD, 914.5 N, 1459.0 E)									
- Rectangle (sides W400.0 H400.0 D1,265.0)									
TARGET BHL 1984'F	0.00	0.00	5,900.0	914.5	1,459.0	342,322.37	4,108,990.69	40.416030	-104.753670
- plan hits target center									
- Point									

Casing Points					
Measured Depth (ft)	Vertical Depth (ft)	Name	Casing Diameter (")	Hole Diameter (")	
702.3	700.0	8 5/8"	8-5/8	12-1/4	





# **Directional**

## **Synergy Resources**

**SEC.10-T5N-R66W**

**SRC Aims/GCC Pad Sec.10-T5N-R66W**

**SRC GCC 12-11D**

**Wellbore #1**

**Plan #2 (9-21-11)**

## **Anticollision Report**

**05 October, 2011**

<b>Company:</b>	Synergy Resources	<b>Local Co-ordinate Reference:</b>	Well SRC GCC 12-11D
<b>Project:</b>	SEC.10-T5N-R66W	<b>TVD Reference:</b>	WELL @ 4871.0ft (Original Well Elev)
<b>Reference Site:</b>	SRC Aims/GCC Pad Sec.10-T5N-R66W	<b>MD Reference:</b>	WELL @ 4871.0ft (Original Well Elev)
<b>Site Error:</b>	0.0ft	<b>North Reference:</b>	True
<b>Reference Well:</b>	SRC GCC 12-11D	<b>Survey Calculation Method:</b>	Minimum Curvature
<b>Well Error:</b>	0.0ft	<b>Output errors are at</b>	2.00 sigma
<b>Reference Wellbore</b>	Wellbore #1	<b>Database:</b>	Landmark
<b>Reference Design:</b>	Plan #2 (9-21-11)	<b>Offset TVD Reference:</b>	Offset Datum

<b>Reference</b>	Plan #2 (9-21-11)		
<b>Filter type:</b>	NO GLOBAL FILTER: Using user defined selection & filtering criteria		
<b>Interpolation Method:</b>	Stations	<b>Error Model:</b>	ISCWSA
<b>Depth Range:</b>	Unlimited	<b>Scan Method:</b>	Closest Approach 3D
<b>Results Limited by:</b>	Maximum center-center distance of 10,000.0ft	<b>Error Surface:</b>	Elliptical Conic
<b>Warning Levels Evaluated at:</b>	2.00 Sigma		

<b>Survey Tool Program</b>	<b>Date</b> 10/5/2011			
<b>From (ft)</b>	<b>To (ft)</b>	<b>Survey (Wellbore)</b>	<b>Tool Name</b>	<b>Description</b>
0.0	8,253.1	Plan #2 (9-21-11) (Wellbore #1)	MWD	MWD - Standard

<b>Summary</b>						
<b>Site Name</b>	<b>Reference Measured Depth (ft)</b>	<b>Offset Measured Depth (ft)</b>	<b>Distance Between Centres (ft)</b>	<b>Distance Between Ellipses (ft)</b>	<b>Separation Factor</b>	<b>Warning</b>
<b>Offset Well - Wellbore - Design</b>						
SRC Aims/GCC Pad Sec.10-T5N-R66W						
SRC GCC 11-11D - Wellbore #1 - Plan #2 (9-21-11)	200.0	200.0	15.7	15.0	23.217	CC, ES
SRC GCC 11-11D - Wellbore #1 - Plan #2 (9-21-11)	3,600.0	3,561.8	488.9	447.6	11.829	SF

Offset Design												Offset Site Error:	0.0 ft
Survey Program: 0-MWD												Offset Well Error:	0.0 ft
Reference		Offset		Semi Major Axis			Distance						
Measured Depth	Vertical Depth	Measured Depth	Vertical Depth	Reference	Offset	Highside Toolface	Offset Wellbore Centre		Between Centres	Between Ellipses	Minimum Separation	Separation Factor	Warning
(ft)	(ft)	(ft)	(ft)	(ft)	(ft)	(°)	+N/-S (ft)	+E/-W (ft)	(ft)	(ft)	(ft)		
0.0	0.0	0.0	0.0	0.0	0.0	-62.29	7.3	-13.9	15.7	15.7	0.00	N/A	
100.0	100.0	100.0	100.0	0.1	0.1	-62.29	7.3	-13.9	15.7	15.4	0.22	69.650	
200.0	200.0	200.0	200.0	0.3	0.3	-62.29	7.3	-13.9	15.7	15.0	0.67	23.217 CC, ES	
300.0	300.0	300.0	300.0	0.6	0.6	-154.98	7.3	-13.9	17.2	16.1	1.12	15.392	
400.0	399.8	400.0	400.0	0.8	0.8	-156.23	8.7	-12.9	21.7	20.2	1.56	13.897	
450.0	449.7	449.9	449.9	0.9	0.9	-154.90	10.6	-11.7	25.0	23.2	1.79	13.945	
500.0	499.5	499.9	499.7	1.0	1.0	-146.65	13.1	-10.0	28.7	26.6	2.02	14.205	
600.0	598.8	599.6	599.1	1.3	1.3	-135.31	20.4	-5.3	36.7	34.2	2.51	14.654	
700.0	697.7	699.3	698.0	1.6	1.5	-128.03	30.5	1.3	45.7	42.7	3.06	14.962	
800.0	796.1	798.9	796.3	2.0	1.8	-122.98	43.6	9.8	55.6	51.9	3.69	15.085	
900.0	893.8	898.3	894.0	2.4	2.2	-119.28	59.4	20.2	66.3	61.9	4.41	15.031	
1,000.0	990.8	997.6	990.8	2.9	2.6	-116.43	78.0	32.4	77.9	72.6	5.25	14.838	
1,100.0	1,086.9	1,096.9	1,086.6	3.4	3.1	-114.17	99.5	46.4	90.3	84.1	6.20	14.551	
1,200.0	1,182.0	1,195.9	1,181.4	4.0	3.6	-112.33	123.6	62.1	103.5	96.2	7.28	14.207	
1,271.2	1,249.0	1,266.3	1,248.1	4.4	4.0	-111.20	142.4	74.4	113.3	105.2	8.13	13.936	
1,300.0	1,276.0	1,294.9	1,275.0	4.6	4.2	-111.04	150.4	79.7	117.4	108.9	8.49	13.836	
1,400.0	1,369.8	1,393.6	1,367.2	5.3	4.9	-109.61	179.9	98.9	131.7	121.9	9.80	13.433	
1,500.0	1,463.5	1,492.0	1,457.9	6.0	5.6	-107.13	211.9	119.8	146.3	135.1	11.22	13.039	
1,600.0	1,557.2	1,590.5	1,547.8	6.7	6.3	-104.32	245.6	141.8	161.4	148.7	12.69	12.724	
1,700.0	1,650.9	1,689.1	1,637.7	7.4	7.1	-101.98	279.4	163.9	176.9	162.7	14.16	12.496	
1,800.0	1,744.7	1,787.6	1,727.7	8.1	7.9	-100.02	313.1	185.9	192.6	177.0	15.62	12.330	
1,900.0	1,838.4	1,886.2	1,817.6	8.8	8.6	-98.36	346.9	208.0	208.5	191.4	17.07	12.208	
2,000.0	1,932.1	1,984.8	1,907.6	9.5	9.4	-96.93	380.6	230.0	224.5	206.0	18.53	12.117	
2,100.0	2,025.8	2,083.3	1,997.5	10.2	10.2	-95.69	414.4	252.1	240.6	220.7	19.97	12.048	
2,200.0	2,119.6	2,181.9	2,087.5	10.9	11.0	-94.61	448.1	274.1	256.9	235.5	21.41	11.996	

CC - Min centre to center distance or convergent point, SF - min separation factor, ES - min ellipse separation

<b>Company:</b>	Synergy Resources	<b>Local Co-ordinate Reference:</b>	Well SRC GCC 12-11D
<b>Project:</b>	SEC.10-T5N-R66W	<b>TVD Reference:</b>	WELL @ 4871.0ft (Original Well Elev)
<b>Reference Site:</b>	SRC Aims/GCC Pad Sec.10-T5N-R66W	<b>MD Reference:</b>	WELL @ 4871.0ft (Original Well Elev)
<b>Site Error:</b>	0.0ft	<b>North Reference:</b>	True
<b>Reference Well:</b>	SRC GCC 12-11D	<b>Survey Calculation Method:</b>	Minimum Curvature
<b>Well Error:</b>	0.0ft	<b>Output errors are at</b>	2.00 sigma
<b>Reference Wellbore</b>	Wellbore #1	<b>Database:</b>	Landmark
<b>Reference Design:</b>	Plan #2 (9-21-11)	<b>Offset TVD Reference:</b>	Offset Datum

Offset Design												Offset Site Error:	0.0ft
Survey Program: 0-MWD												Offset Well Error:	0.0ft
Reference		Offset		Semi Major Axis			Distance						Warning
Measured Depth (ft)	Vertical Depth (ft)	Measured Depth (ft)	Vertical Depth (ft)	Reference (ft)	Offset (ft)	Highside Toolface (°)	Offset Wellbore Centre +N/-S (ft)	+E/-W (ft)	Between Centres (ft)	Between Ellipses (ft)	Minimum Separation (ft)	Separation Factor	
2,300.0	2,213.3	2,280.4	2,177.4	11.7	11.8	-93.65	481.9	296.2	273.2	250.3	22.85	11.956	
2,400.0	2,307.0	2,379.0	2,267.3	12.4	12.6	-92.80	515.6	318.2	289.6	265.3	24.29	11.924	
2,500.0	2,400.7	2,477.6	2,357.3	13.1	13.4	-92.05	549.4	340.3	306.0	280.3	25.72	11.900	
2,600.0	2,494.5	2,576.1	2,447.2	13.8	14.1	-91.37	583.1	362.3	322.5	295.4	27.14	11.882	
2,700.0	2,588.2	2,674.7	2,537.2	14.5	14.9	-90.76	616.9	384.4	339.0	310.5	28.57	11.867	
2,800.0	2,681.9	2,773.3	2,627.1	15.2	15.7	-90.20	650.6	406.4	355.6	325.6	29.99	11.856	
2,900.0	2,775.7	2,871.8	2,717.0	15.9	16.5	-89.70	684.4	428.5	372.2	340.8	31.42	11.848	
3,000.0	2,869.4	2,970.4	2,807.0	16.7	17.3	-89.23	718.1	450.5	388.8	356.0	32.84	11.841	
3,100.0	2,963.1	3,068.9	2,896.9	17.4	18.1	-88.81	751.9	472.6	405.5	371.2	34.26	11.837	
3,200.0	3,056.8	3,167.5	2,986.9	18.1	18.9	-88.42	785.6	494.6	422.1	386.5	35.67	11.833	
3,300.0	3,150.6	3,266.1	3,076.8	18.8	19.7	-88.06	819.4	516.7	438.8	401.7	37.09	11.831	
3,400.0	3,244.3	3,364.6	3,166.7	19.5	20.5	-87.72	853.1	538.7	455.5	417.0	38.51	11.830	
3,500.0	3,338.0	3,463.2	3,256.7	20.3	21.3	-87.41	886.9	560.7	472.2	432.3	39.92	11.829	
3,600.0	3,431.7	3,561.8	3,346.6	21.0	22.1	-87.12	920.6	582.8	488.9	447.6	41.33	11.829 SF	
3,700.0	3,525.5	3,660.3	3,436.6	21.7	22.9	-86.85	954.4	604.8	505.7	462.9	42.75	11.829	
3,800.0	3,619.2	3,758.9	3,526.5	22.4	23.7	-86.59	988.1	626.9	522.4	478.3	44.16	11.830	
3,900.0	3,712.9	3,857.4	3,616.4	23.1	24.5	-86.35	1,021.9	648.9	539.2	493.6	45.57	11.831	
4,000.0	3,806.6	3,956.0	3,706.4	23.8	25.3	-86.13	1,055.6	671.0	555.9	508.9	46.98	11.833	
4,100.0	3,900.4	4,054.6	3,796.3	24.6	26.1	-85.92	1,089.4	693.0	572.7	524.3	48.39	11.835	
4,200.0	3,994.1	4,153.1	3,886.3	25.3	26.9	-85.72	1,123.1	715.1	589.5	539.7	49.80	11.836	
4,300.0	4,087.8	4,251.7	3,976.2	26.0	27.7	-85.53	1,156.9	737.1	606.3	555.0	51.21	11.838	
4,400.0	4,181.5	4,350.3	4,066.2	26.7	28.5	-85.36	1,190.6	759.2	623.0	570.4	52.62	11.840	
4,500.0	4,275.3	4,448.8	4,156.1	27.4	29.3	-85.19	1,224.4	781.2	639.8	585.8	54.03	11.842	
4,600.0	4,369.0	4,547.4	4,246.0	28.2	30.1	-85.03	1,258.1	803.3	656.6	601.2	55.44	11.844	
4,700.0	4,462.7	4,645.9	4,336.0	28.9	30.9	-84.88	1,291.9	825.3	673.4	616.6	56.85	11.847	
4,800.0	4,556.4	4,744.5	4,425.9	29.6	31.7	-84.73	1,325.6	847.4	690.3	632.0	58.25	11.849	
4,900.0	4,650.2	4,843.1	4,515.9	30.3	32.5	-84.60	1,359.4	869.4	707.1	647.4	59.66	11.851	
5,000.0	4,743.9	4,941.6	4,605.8	31.0	33.3	-84.47	1,393.1	891.5	723.9	662.8	61.07	11.853	
5,100.0	4,837.6	5,040.2	4,695.7	31.8	34.1	-84.34	1,426.9	913.5	740.7	678.2	62.48	11.856	
5,167.9	4,901.3	5,107.1	4,756.8	32.2	34.6	-84.26	1,449.8	928.5	752.1	688.7	63.43	11.857	
5,200.0	4,931.4	5,138.8	4,785.7	32.4	34.9	-84.32	1,460.6	935.6	757.5	693.7	63.87	11.860	
5,300.0	5,026.1	5,237.2	4,875.5	33.0	35.7	-84.33	1,494.3	957.6	774.7	709.6	65.10	11.899	
5,400.0	5,121.8	5,335.3	4,965.1	33.5	36.5	-84.12	1,528.0	979.5	792.2	725.9	66.22	11.962	
5,500.0	5,218.5	5,433.1	5,054.3	33.9	37.3	-83.70	1,561.4	1,001.4	810.1	742.9	67.23	12.050	
5,600.0	5,316.1	5,530.3	5,143.0	34.3	38.0	-83.08	1,594.7	1,023.2	828.7	760.6	68.12	12.165	
5,700.0	5,414.3	5,627.0	5,231.2	34.6	38.8	-82.30	1,627.8	1,044.8	847.9	779.0	68.89	12.309	
5,800.0	5,513.1	5,722.9	5,318.7	34.9	39.6	-81.37	1,660.7	1,066.2	868.0	798.5	69.53	12.485	
5,900.0	5,612.4	5,817.9	5,405.4	35.1	40.4	-80.31	1,693.2	1,087.5	889.2	819.2	70.04	12.696	
6,000.0	5,712.1	5,911.9	5,491.2	35.3	41.1	-79.15	1,725.4	1,108.5	911.6	841.2	70.42	12.944	
6,100.0	5,812.0	6,004.8	5,576.0	35.4	41.9	-77.91	1,757.2	1,129.3	935.4	864.7	70.68	13.234	
6,188.1	5,900.0	6,085.7	5,649.8	35.5	42.5	-19.70	1,784.9	1,147.4	957.7	886.9	70.81	13.526	
6,200.0	5,911.9	6,096.6	5,659.7	35.5	42.6	-19.48	1,788.6	1,149.8	960.9	890.1	70.80	13.572	
6,300.0	6,011.9	6,187.8	5,743.0	35.6	43.4	-17.69	1,819.9	1,170.2	987.6	916.9	70.67	13.974	
6,400.0	6,111.9	6,279.3	5,826.4	35.7	44.1	-15.99	1,851.2	1,190.7	1,015.3	944.8	70.53	14.396	
6,500.0	6,211.9	6,402.2	5,939.7	35.7	44.9	-13.93	1,891.2	1,216.9	1,042.5	972.3	70.15	14.860	
6,600.0	6,311.9	6,529.5	6,059.0	35.8	45.6	-12.13	1,928.4	1,241.1	1,067.4	997.6	69.81	15.291	
6,700.0	6,411.9	6,660.8	6,184.0	35.9	46.2	-10.60	1,962.0	1,263.1	1,089.7	1,020.2	69.52	15.675	
6,800.0	6,511.9	6,795.8	6,314.2	36.0	46.8	-9.32	1,991.5	1,282.4	1,109.1	1,039.8	69.31	16.004	
6,900.0	6,611.9	6,934.0	6,449.2	36.1	47.3	-8.28	2,016.4	1,298.6	1,125.3	1,056.1	69.16	16.270	
7,000.0	6,711.9	7,047.8	6,561.2	36.2	47.7	-7.60	2,033.3	1,309.7	1,138.7	1,069.6	69.15	16.468	
7,100.0	6,811.9	7,146.3	6,658.2	36.3	48.0	-7.04	2,047.6	1,319.0	1,152.0	1,082.8	69.19	16.651	
7,200.0	6,911.9	7,244.7	6,755.2	36.3	48.4	-6.50	2,061.9	1,328.4	1,165.4	1,096.2	69.23	16.835	

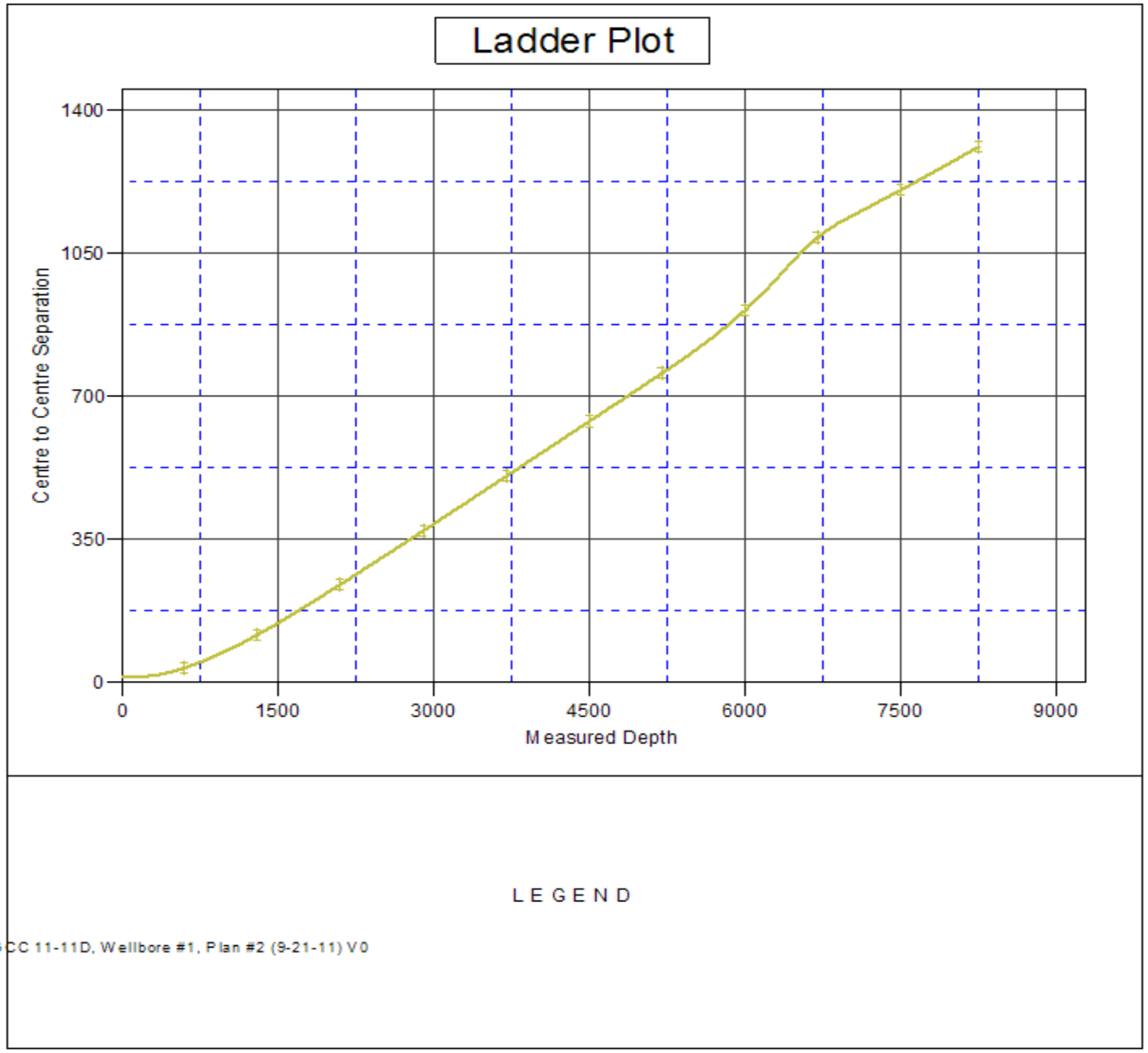
CC - Min centre to center distance or convergent point, SF - min separation factor, ES - min ellipse separation

<b>Company:</b>	Synergy Resources	<b>Local Co-ordinate Reference:</b>	Well SRC GCC 12-11D
<b>Project:</b>	SEC.10-T5N-R66W	<b>TVD Reference:</b>	WELL @ 4871.0ft (Original Well Elev)
<b>Reference Site:</b>	SRC Aims/GCC Pad Sec.10-T5N-R66W	<b>MD Reference:</b>	WELL @ 4871.0ft (Original Well Elev)
<b>Site Error:</b>	0.0ft	<b>North Reference:</b>	True
<b>Reference Well:</b>	SRC GCC 12-11D	<b>Survey Calculation Method:</b>	Minimum Curvature
<b>Well Error:</b>	0.0ft	<b>Output errors are at</b>	2.00 sigma
<b>Reference Wellbore</b>	Wellbore #1	<b>Database:</b>	Landmark
<b>Reference Design:</b>	Plan #2 (9-21-11)	<b>Offset TVD Reference:</b>	Offset Datum

<b>Offset Design</b>												<b>Offset Site Error:</b>	0.0 ft
SRC Aims/GCC Pad Sec.10-T5N-R66W - SRC GCC 11-11D - Wellbore #1 - Plan #2 (9-21-11)												<b>Offset Well Error:</b>	0.0 ft
Survey Program: 0-MWD													
Reference		Offset		Semi Major Axis			Distance						
Measured Depth (ft)	Vertical Depth (ft)	Measured Depth (ft)	Vertical Depth (ft)	Reference (ft)	Offset (ft)	Highside Toolface (°)	Offset Wellbore Centre +N/-S (ft)	+E/-W (ft)	Between Centres (ft)	Between Ellipses (ft)	Minimum Separation (ft)	Separation Factor	Warning
7,300.0	7,011.9	7,343.2	6,852.1	36.4	48.8	-5.96	2,076.3	1,337.7	1,178.9	1,109.7	69.27	17.019	
7,400.0	7,111.9	7,441.7	6,949.1	36.5	49.1	-5.44	2,090.6	1,347.1	1,192.5	1,123.2	69.32	17.203	
7,500.0	7,211.9	7,540.2	7,046.1	36.6	49.5	-4.93	2,104.9	1,356.4	1,206.2	1,136.9	69.38	17.386	
7,600.0	7,311.9	7,638.7	7,143.1	36.7	49.9	-4.43	2,119.2	1,365.8	1,220.0	1,150.6	69.44	17.570	
7,700.0	7,411.9	7,737.2	7,240.1	36.8	50.3	-3.94	2,133.5	1,375.1	1,233.9	1,164.4	69.50	17.753	
7,800.0	7,511.9	7,835.6	7,337.1	36.9	50.6	-3.46	2,147.8	1,384.5	1,247.9	1,178.3	69.58	17.936	
7,900.0	7,611.9	7,934.1	7,434.1	37.0	51.0	-2.99	2,162.2	1,393.8	1,261.9	1,192.3	69.65	18.118	
8,000.0	7,711.9	8,032.6	7,531.0	37.1	51.4	-2.53	2,176.5	1,403.2	1,276.1	1,206.3	69.73	18.300	
8,100.0	7,811.9	8,131.1	7,628.0	37.2	51.7	-2.09	2,190.8	1,412.5	1,290.3	1,220.5	69.82	18.480	
8,200.0	7,911.9	8,229.6	7,725.0	37.3	52.1	-1.65	2,205.1	1,421.9	1,304.6	1,234.7	69.91	18.661	
8,253.1	7,965.0	8,281.8	7,776.5	37.4	52.3	-1.42	2,212.7	1,426.9	1,312.2	1,242.2	69.96	18.756	

<b>Company:</b>	Synergy Resources	<b>Local Co-ordinate Reference:</b>	Well SRC GCC 12-11D
<b>Project:</b>	SEC.10-T5N-R66W	<b>TVD Reference:</b>	WELL @ 4871.0ft (Original Well Elev)
<b>Reference Site:</b>	SRC Aims/GCC Pad Sec.10-T5N-R66W	<b>MD Reference:</b>	WELL @ 4871.0ft (Original Well Elev)
<b>Site Error:</b>	0.0ft	<b>North Reference:</b>	True
<b>Reference Well:</b>	SRC GCC 12-11D	<b>Survey Calculation Method:</b>	Minimum Curvature
<b>Well Error:</b>	0.0ft	<b>Output errors are at</b>	2.00 sigma
<b>Reference Wellbore</b>	Wellbore #1	<b>Database:</b>	Landmark
<b>Reference Design:</b>	Plan #2 (9-21-11)	<b>Offset TVD Reference:</b>	Offset Datum

Reference Depths are relative to WELL @ 4871.0ft (Original Well Elev) Coordinates are relative to: SRC GCC 12-11D  
 Offset Depths are relative to Offset Datum Coordinate System is US State Plane 1983, Wyoming Western Zone  
 Central Meridian is -110.083333 ° Grid Convergence at Surface is: 3.46°



<b>Company:</b>	Synergy Resources	<b>Local Co-ordinate Reference:</b>	Well SRC GCC 12-11D
<b>Project:</b>	SEC.10-T5N-R66W	<b>TVD Reference:</b>	WELL @ 4871.0ft (Original Well Elev)
<b>Reference Site:</b>	SRC Aims/GCC Pad Sec.10-T5N-R66W	<b>MD Reference:</b>	WELL @ 4871.0ft (Original Well Elev)
<b>Site Error:</b>	0.0ft	<b>North Reference:</b>	True
<b>Reference Well:</b>	SRC GCC 12-11D	<b>Survey Calculation Method:</b>	Minimum Curvature
<b>Well Error:</b>	0.0ft	<b>Output errors are at</b>	2.00 sigma
<b>Reference Wellbore</b>	Wellbore #1	<b>Database:</b>	Landmark
<b>Reference Design:</b>	Plan #2 (9-21-11)	<b>Offset TVD Reference:</b>	Offset Datum

Reference Depths are relative to WELL @ 4871.0ft (Original Well Elev) Coordinates are relative to: SRC GCC 12-11D  
Offset Depths are relative to Offset Datum Coordinate System is US State Plane 1983, Wyoming Western Zone  
Central Meridian is -110.083333 ° Grid Convergence at Surface is: 3.46°

