

# ENSIGN

## Directional

### Well Name: SRC GCC 10VD

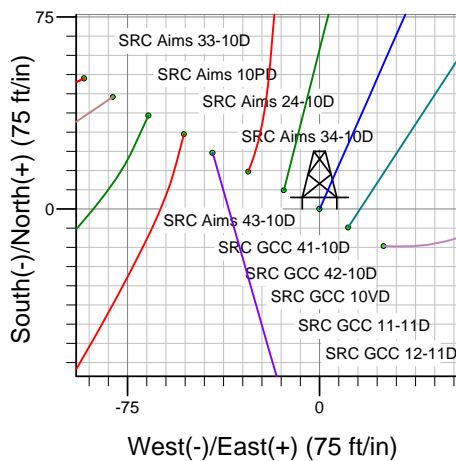
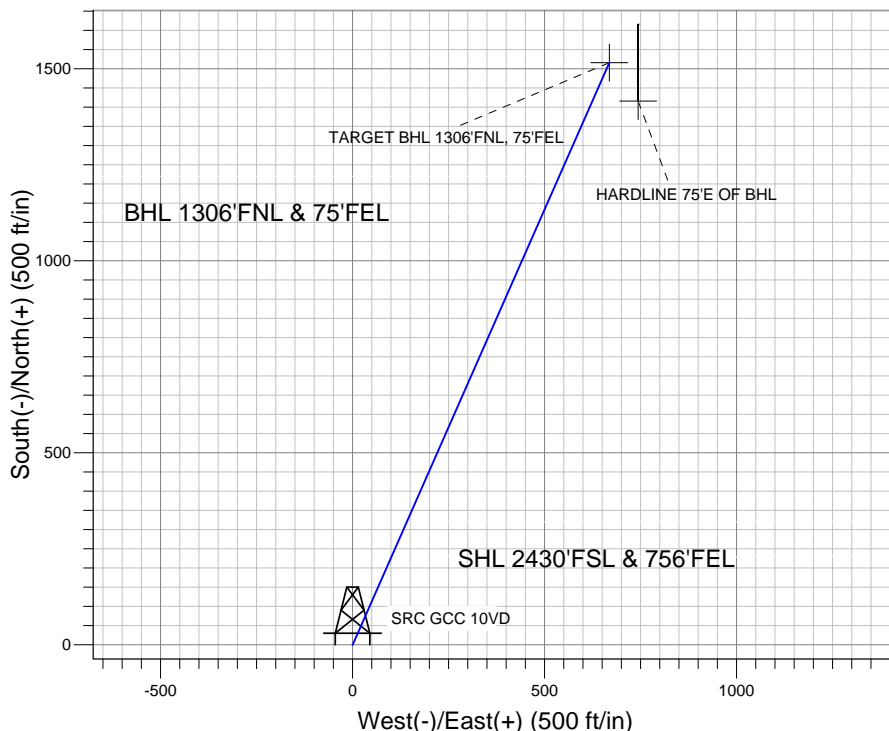
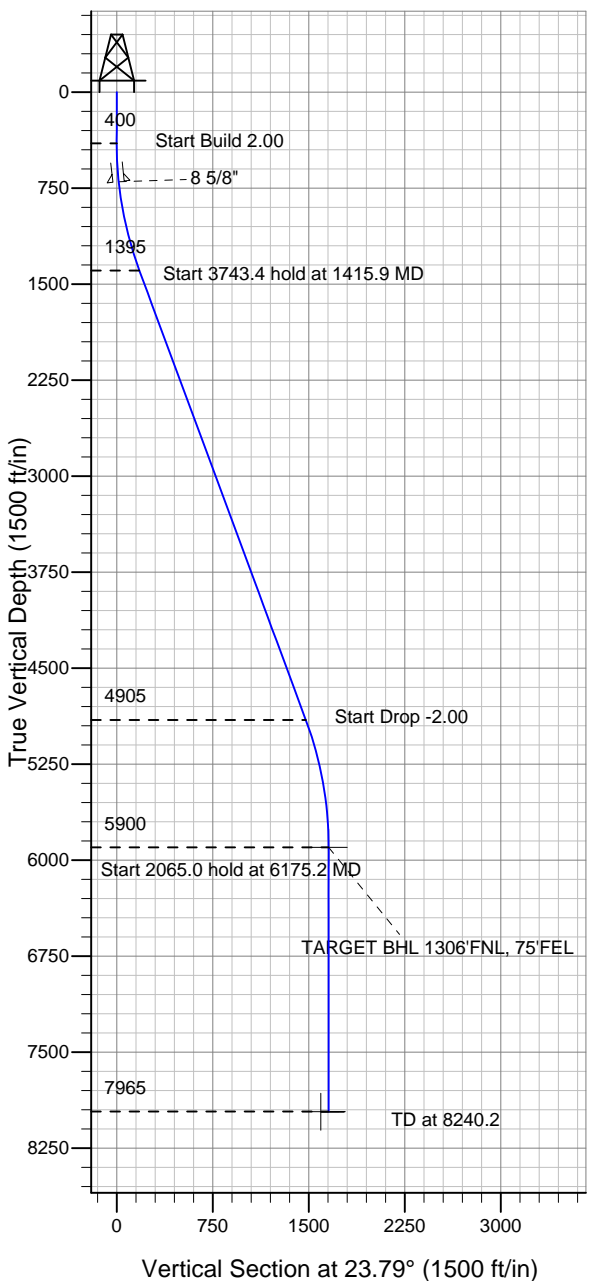
Surface Location: SRC Aims/GCC Pad Sec.10-T5N-R66W  
 North American Datum 1983 US State Plane 1983 Wyoming Western Zone

Ground Elevation: 4858.0

+N/-S	+E/-W	Northing	Easting	Latitude	Longitude	Slot
0.0	0.0	341332.16	4107560.13	40.413560	-104.758999	

Original Well Elev WELL @ 4871.0ft (Original Well Elev)

### Synergy Resources



SRC Aims/GCC Pad Sec.10-T5N-R66W  
 SRC GCC 10VD  
 Plan #2 (9-21-11)  
 14:03, October 05 2011



Azimuths to True North  
 Magnetic North: 8.82°

Magnetic Field  
 Strength: 53106.6snT  
 Dip Angle: 67.05°  
 Date: 10/5/2011  
 Model: IGRF2010

### WELLBORE TARGET DETAILS (LAT/LONG)

Name	TVD	+N/-S	+E/-W	Latitude	Longitude	Shape
TARGET BHL 1306'FNL, 75'FEL	5900.0	1515.6	668.1	40.417720	-104.756600	Point
HARDLINE 75'E OF BHL	7965.0	1415.6	743.1	40.417446	-104.756330	Polygon

### SECTION DETAILS

Sec	MD	Inc	Azi	TVD	+N/-S	+E/-W	DLeg	TFace	VSec	Target
1	0.0	0.00	0.00	0.0	0.0	0.0	0.00	0.00	0.0	
2	400.0	0.00	0.00	400.0	0.0	0.0	0.00	0.00	0.0	
3	1415.9	20.32	23.79	1394.7	163.1	71.9	2.00	23.79	178.2	
4	5159.3	20.32	23.79	4905.3	1352.5	596.2	0.00	0.00	1478.1	
5	6175.2	0.00	0.00	5900.0	1515.6	668.1	2.00	180.00	1656.3	TARGET BHL 1306'FNL, 75'FEL
6	8240.2	0.00	0.00	7965.0	1515.6	668.1	0.00	0.00	1656.3	



## **Directional**

### **Synergy Resources**

**SEC.10-T5N-R66W**

**SRC Aims/GCC Pad Sec.10-T5N-R66W**

**SRC GCC 10VD**

**Wellbore #1**

**Plan: Plan #2 (9-21-11)**

### **Standard Planning Report**

**05 October, 2011**

<b>Database:</b>	Landmark	<b>Local Co-ordinate Reference:</b>	Well SRC GCC 10VD
<b>Company:</b>	Synergy Resources	<b>TVD Reference:</b>	WELL @ 4871.0ft (Original Well Elev)
<b>Project:</b>	SEC.10-T5N-R66W	<b>MD Reference:</b>	WELL @ 4871.0ft (Original Well Elev)
<b>Site:</b>	SRC Aims/GCC Pad Sec.10-T5N-R66W	<b>North Reference:</b>	True
<b>Well:</b>	SRC GCC 10VD	<b>Survey Calculation Method:</b>	Minimum Curvature
<b>Wellbore:</b>	Wellbore #1		
<b>Design:</b>	Plan #2 (9-21-11)		

<b>Project</b>	SEC.10-T5N-R66W, Weld County, Colorado		
<b>Map System:</b>	US State Plane 1983	<b>System Datum:</b>	Mean Sea Level
<b>Geo Datum:</b>	North American Datum 1983		Using Well Reference Point
<b>Map Zone:</b>	Wyoming Western Zone		Using geodetic scale factor

Site	SRC Aims/GCC Pad Sec.10-T5N-R66W				
Site Position:		Northing:	341,383.04 ft	Latitude:	40.413700
From:	Lat/Long	Easting:	4,107,554.13 ft	Longitude:	-104.759010
Position Uncertainty:	0.0 ft	Slot Radius:	"	Grid Convergence:	3.46 °

Well	SRC GCC 10VD					
Well Position	+N-S	-51.0 ft	Northing:	341,332.16 ft	Latitude:	40.413560
	+E-W	2.9 ft	Easting:	4,107,560.13 ft	Longitude:	-104.758999
Position Uncertainty		0.0 ft	Wellhead Elevation:	ft	Ground Level:	4,858.0 ft

<b>Wellbore</b>	Wellbore #1				
<b>Magnetics</b>	<b>Model Name</b>	<b>Sample Date</b>	<b>Declination (°)</b>	<b>Dip Angle (°)</b>	<b>Field Strength (nT)</b>
	IGRF2010	10/5/2011	8.82	67.05	53,107

<b>Design</b>	Plan #2 (9-21-11)			
<b>Audit Notes:</b>				
<b>Version:</b>	<b>Phase:</b>	PROTOTYPE	<b>Tie On Depth:</b>	0.0
<b>Vertical Section:</b>	<b>Depth From (TVD) (ft)</b>	<b>+N/-S (ft)</b>	<b>+E/-W (ft)</b>	<b>Direction (°)</b>
	0.0	0.0	0.0	23.79

<b>Plan Sections</b>										
Measured Depth (ft)	Inclination (°)	Azimuth (°)	Vertical Depth (ft)	+N/-S (ft)	+E/-W (ft)	Dogleg Rate (°/100ft)	Build Rate (°/100ft)	Turn Rate (°/100ft)	TFO (°)	Target
0.0	0.00	0.00	0.0	0.0	0.0	0.00	0.00	0.00	0.00	
400.0	0.00	0.00	400.0	0.0	0.0	0.00	0.00	0.00	0.00	
1,415.9	20.32	23.79	1,394.7	163.1	71.9	2.00	2.00	0.00	23.79	
5,159.3	20.32	23.79	4,905.3	1,352.5	596.2	0.00	0.00	0.00	0.00	
6,175.2	0.00	0.00	5,900.0	1,515.6	668.1	2.00	-2.00	0.00	180.00	TARGET BHL 1306
8,240.2	0.00	0.00	7,965.0	1,515.6	668.1	0.00	0.00	0.00	0.00	

<b>Database:</b>	Landmark	<b>Local Co-ordinate Reference:</b>	Well SRC GCC 10VD
<b>Company:</b>	Synergy Resources	<b>TVD Reference:</b>	WELL @ 4871.0ft (Original Well Elev)
<b>Project:</b>	SEC.10-T5N-R66W	<b>MD Reference:</b>	WELL @ 4871.0ft (Original Well Elev)
<b>Site:</b>	SRC Aims/GCC Pad Sec.10-T5N-R66W	<b>North Reference:</b>	True
<b>Well:</b>	SRC GCC 10VD	<b>Survey Calculation Method:</b>	Minimum Curvature
<b>Wellbore:</b>	Wellbore #1		
<b>Design:</b>	Plan #2 (9-21-11)		

Planned Survey									
Measured Depth (ft)	Inclination (°)	Azimuth (°)	Vertical Depth (ft)	+N/-S (ft)	+E/-W (ft)	Vertical Section (ft)	Dogleg Rate (°/100ft)	Build Rate (°/100ft)	Turn Rate (°/100ft)
0.0	0.00	0.00	0.0	0.0	0.0	0.0	0.00	0.00	0.00
40.0	0.00	0.00	40.0	0.0	0.0	0.0	0.00	0.00	0.00
80.0	0.00	0.00	80.0	0.0	0.0	0.0	0.00	0.00	0.00
120.0	0.00	0.00	120.0	0.0	0.0	0.0	0.00	0.00	0.00
160.0	0.00	0.00	160.0	0.0	0.0	0.0	0.00	0.00	0.00
200.0	0.00	0.00	200.0	0.0	0.0	0.0	0.00	0.00	0.00
240.0	0.00	0.00	240.0	0.0	0.0	0.0	0.00	0.00	0.00
280.0	0.00	0.00	280.0	0.0	0.0	0.0	0.00	0.00	0.00
320.0	0.00	0.00	320.0	0.0	0.0	0.0	0.00	0.00	0.00
360.0	0.00	0.00	360.0	0.0	0.0	0.0	0.00	0.00	0.00
400.0	0.00	0.00	400.0	0.0	0.0	0.0	0.00	0.00	0.00
440.0	0.80	23.79	440.0	0.3	0.1	0.3	2.00	2.00	0.00
480.0	1.60	23.79	480.0	1.0	0.5	1.1	2.00	2.00	0.00
520.0	2.40	23.79	520.0	2.3	1.0	2.5	2.00	2.00	0.00
560.0	3.20	23.79	559.9	4.1	1.8	4.5	2.00	2.00	0.00
600.0	4.00	23.79	599.8	6.4	2.8	7.0	2.00	2.00	0.00
640.0	4.80	23.79	639.7	9.2	4.1	10.0	2.00	2.00	0.00
680.0	5.60	23.79	679.6	12.5	5.5	13.7	2.00	2.00	0.00
700.6	6.01	23.79	700.0	14.4	6.4	15.8	2.00	2.00	0.00
8 5/8"									
720.0	6.40	23.79	719.3	16.3	7.2	17.9	2.00	2.00	0.00
760.0	7.20	23.79	759.1	20.7	9.1	22.6	2.00	2.00	0.00
800.0	8.00	23.79	798.7	25.5	11.2	27.9	2.00	2.00	0.00
840.0	8.80	23.79	838.3	30.9	13.6	33.7	2.00	2.00	0.00
880.0	9.60	23.79	877.8	36.7	16.2	40.1	2.00	2.00	0.00
920.0	10.40	23.79	917.1	43.1	19.0	47.1	2.00	2.00	0.00
960.0	11.20	23.79	956.4	49.9	22.0	54.6	2.00	2.00	0.00
1,000.0	12.00	23.79	995.6	57.3	25.3	62.6	2.00	2.00	0.00
1,040.0	12.80	23.79	1,034.7	65.1	28.7	71.2	2.00	2.00	0.00
1,080.0	13.60	23.79	1,073.6	73.5	32.4	80.3	2.00	2.00	0.00
1,120.0	14.40	23.79	1,112.4	82.4	36.3	90.0	2.00	2.00	0.00
1,160.0	15.20	23.79	1,151.1	91.7	40.4	100.2	2.00	2.00	0.00
1,200.0	16.00	23.79	1,189.6	101.5	44.8	111.0	2.00	2.00	0.00
1,240.0	16.80	23.79	1,228.0	111.9	49.3	122.3	2.00	2.00	0.00
1,280.0	17.60	23.79	1,266.2	122.7	54.1	134.1	2.00	2.00	0.00
1,320.0	18.40	23.79	1,304.3	134.0	59.1	146.5	2.00	2.00	0.00
1,360.0	19.20	23.79	1,342.1	145.8	64.3	159.3	2.00	2.00	0.00
1,400.0	20.00	23.79	1,379.8	158.1	69.7	172.8	2.00	2.00	0.00
1,415.9	20.32	23.79	1,394.7	163.1	71.9	178.2	2.00	2.00	0.00
1,440.0	20.32	23.79	1,417.3	170.8	75.3	186.6	0.00	0.00	0.00
1,480.0	20.32	23.79	1,454.9	183.5	80.9	200.5	0.00	0.00	0.00
1,520.0	20.32	23.79	1,492.4	196.2	86.5	214.4	0.00	0.00	0.00
1,560.0	20.32	23.79	1,529.9	208.9	92.1	228.3	0.00	0.00	0.00
1,600.0	20.32	23.79	1,567.4	221.6	97.7	242.2	0.00	0.00	0.00
1,640.0	20.32	23.79	1,604.9	234.3	103.3	256.1	0.00	0.00	0.00
1,680.0	20.32	23.79	1,642.4	247.0	108.9	269.9	0.00	0.00	0.00
1,720.0	20.32	23.79	1,679.9	259.7	114.5	283.8	0.00	0.00	0.00
1,760.0	20.32	23.79	1,717.4	272.4	120.1	297.7	0.00	0.00	0.00
1,800.0	20.32	23.79	1,754.9	285.1	125.7	311.6	0.00	0.00	0.00
1,840.0	20.32	23.79	1,792.5	297.9	131.3	325.5	0.00	0.00	0.00
1,880.0	20.32	23.79	1,830.0	310.6	136.9	339.4	0.00	0.00	0.00
1,920.0	20.32	23.79	1,867.5	323.3	142.5	353.3	0.00	0.00	0.00
1,960.0	20.32	23.79	1,905.0	336.0	148.1	367.2	0.00	0.00	0.00
2,000.0	20.32	23.79	1,942.5	348.7	153.7	381.1	0.00	0.00	0.00

<b>Database:</b>	Landmark	<b>Local Co-ordinate Reference:</b>	Well SRC GCC 10VD
<b>Company:</b>	Synergy Resources	<b>TVD Reference:</b>	WELL @ 4871.0ft (Original Well Elev)
<b>Project:</b>	SEC.10-T5N-R66W	<b>MD Reference:</b>	WELL @ 4871.0ft (Original Well Elev)
<b>Site:</b>	SRC Aims/GCC Pad Sec.10-T5N-R66W	<b>North Reference:</b>	True
<b>Well:</b>	SRC GCC 10VD	<b>Survey Calculation Method:</b>	Minimum Curvature
<b>Wellbore:</b>	Wellbore #1		
<b>Design:</b>	Plan #2 (9-21-11)		

Planned Survey									
Measured Depth (ft)	Inclination (°)	Azimuth (°)	Vertical Depth (ft)	+N/-S (ft)	+E/-W (ft)	Vertical Section (ft)	Dogleg Rate (°/100ft)	Build Rate (°/100ft)	Turn Rate (°/100ft)
2,040.0	20.32	23.79	1,980.0	361.4	159.3	395.0	0.00	0.00	0.00
2,080.0	20.32	23.79	2,017.5	374.1	164.9	408.8	0.00	0.00	0.00
2,120.0	20.32	23.79	2,055.0	386.8	170.5	422.7	0.00	0.00	0.00
2,160.0	20.32	23.79	2,092.5	399.5	176.1	436.6	0.00	0.00	0.00
2,200.0	20.32	23.79	2,130.1	412.2	181.7	450.5	0.00	0.00	0.00
2,240.0	20.32	23.79	2,167.6	424.9	187.3	464.4	0.00	0.00	0.00
2,280.0	20.32	23.79	2,205.1	437.6	192.9	478.3	0.00	0.00	0.00
2,320.0	20.32	23.79	2,242.6	450.4	198.5	492.2	0.00	0.00	0.00
2,360.0	20.32	23.79	2,280.1	463.1	204.1	506.1	0.00	0.00	0.00
2,400.0	20.32	23.79	2,317.6	475.8	209.7	520.0	0.00	0.00	0.00
2,440.0	20.32	23.79	2,355.1	488.5	215.3	533.8	0.00	0.00	0.00
2,480.0	20.32	23.79	2,392.6	501.2	220.9	547.7	0.00	0.00	0.00
2,520.0	20.32	23.79	2,430.1	513.9	226.5	561.6	0.00	0.00	0.00
2,560.0	20.32	23.79	2,467.7	526.6	232.1	575.5	0.00	0.00	0.00
2,600.0	20.32	23.79	2,505.2	539.3	237.7	589.4	0.00	0.00	0.00
2,640.0	20.32	23.79	2,542.7	552.0	243.3	603.3	0.00	0.00	0.00
2,680.0	20.32	23.79	2,580.2	564.7	248.9	617.2	0.00	0.00	0.00
2,720.0	20.32	23.79	2,617.7	577.4	254.6	631.1	0.00	0.00	0.00
2,760.0	20.32	23.79	2,655.2	590.2	260.2	645.0	0.00	0.00	0.00
2,800.0	20.32	23.79	2,692.7	602.9	265.8	658.8	0.00	0.00	0.00
2,840.0	20.32	23.79	2,730.2	615.6	271.4	672.7	0.00	0.00	0.00
2,880.0	20.32	23.79	2,767.7	628.3	277.0	686.6	0.00	0.00	0.00
2,920.0	20.32	23.79	2,805.3	641.0	282.6	700.5	0.00	0.00	0.00
2,960.0	20.32	23.79	2,842.8	653.7	288.2	714.4	0.00	0.00	0.00
3,000.0	20.32	23.79	2,880.3	666.4	293.8	728.3	0.00	0.00	0.00
3,040.0	20.32	23.79	2,917.8	679.1	299.4	742.2	0.00	0.00	0.00
3,080.0	20.32	23.79	2,955.3	691.8	305.0	756.1	0.00	0.00	0.00
3,120.0	20.32	23.79	2,992.8	704.5	310.6	770.0	0.00	0.00	0.00
3,160.0	20.32	23.79	3,030.3	717.2	316.2	783.8	0.00	0.00	0.00
3,200.0	20.32	23.79	3,067.8	730.0	321.8	797.7	0.00	0.00	0.00
3,240.0	20.32	23.79	3,105.3	742.7	327.4	811.6	0.00	0.00	0.00
3,280.0	20.32	23.79	3,142.9	755.4	333.0	825.5	0.00	0.00	0.00
3,320.0	20.32	23.79	3,180.4	768.1	338.6	839.4	0.00	0.00	0.00
3,360.0	20.32	23.79	3,217.9	780.8	344.2	853.3	0.00	0.00	0.00
3,400.0	20.32	23.79	3,255.4	793.5	349.8	867.2	0.00	0.00	0.00
3,440.0	20.32	23.79	3,292.9	806.2	355.4	881.1	0.00	0.00	0.00
3,480.0	20.32	23.79	3,330.4	818.9	361.0	895.0	0.00	0.00	0.00
3,520.0	20.32	23.79	3,367.9	831.6	366.6	908.8	0.00	0.00	0.00
3,560.0	20.32	23.79	3,405.4	844.3	372.2	922.7	0.00	0.00	0.00
3,600.0	20.32	23.79	3,442.9	857.0	377.8	936.6	0.00	0.00	0.00
3,640.0	20.32	23.79	3,480.5	869.8	383.4	950.5	0.00	0.00	0.00
3,680.0	20.32	23.79	3,518.0	882.5	389.0	964.4	0.00	0.00	0.00
3,720.0	20.32	23.79	3,555.5	895.2	394.6	978.3	0.00	0.00	0.00
3,760.0	20.32	23.79	3,593.0	907.9	400.2	992.2	0.00	0.00	0.00
3,800.0	20.32	23.79	3,630.5	920.6	405.8	1,006.1	0.00	0.00	0.00
3,840.0	20.32	23.79	3,668.0	933.3	411.4	1,020.0	0.00	0.00	0.00
3,880.0	20.32	23.79	3,705.5	946.0	417.0	1,033.9	0.00	0.00	0.00
3,920.0	20.32	23.79	3,743.0	958.7	422.6	1,047.7	0.00	0.00	0.00
3,960.0	20.32	23.79	3,780.6	971.4	428.2	1,061.6	0.00	0.00	0.00
4,000.0	20.32	23.79	3,818.1	984.1	433.8	1,075.5	0.00	0.00	0.00
4,040.0	20.32	23.79	3,855.6	996.8	439.4	1,089.4	0.00	0.00	0.00
4,080.0	20.32	23.79	3,893.1	1,009.6	445.0	1,103.3	0.00	0.00	0.00
4,120.0	20.32	23.79	3,930.6	1,022.3	450.6	1,117.2	0.00	0.00	0.00
4,160.0	20.32	23.79	3,968.1	1,035.0	456.2	1,131.1	0.00	0.00	0.00

<b>Database:</b>	Landmark	<b>Local Co-ordinate Reference:</b>	Well SRC GCC 10VD
<b>Company:</b>	Synergy Resources	<b>TVD Reference:</b>	WELL @ 4871.0ft (Original Well Elev)
<b>Project:</b>	SEC.10-T5N-R66W	<b>MD Reference:</b>	WELL @ 4871.0ft (Original Well Elev)
<b>Site:</b>	SRC Aims/GCC Pad Sec.10-T5N-R66W	<b>North Reference:</b>	True
<b>Well:</b>	SRC GCC 10VD	<b>Survey Calculation Method:</b>	Minimum Curvature
<b>Wellbore:</b>	Wellbore #1		
<b>Design:</b>	Plan #2 (9-21-11)		

Planned Survey									
Measured Depth (ft)	Inclination (°)	Azimuth (°)	Vertical Depth (ft)	+N/-S (ft)	+E/-W (ft)	Vertical Section (ft)	Dogleg Rate (°/100ft)	Build Rate (°/100ft)	Turn Rate (°/100ft)
4,200.0	20.32	23.79	4,005.6	1,047.7	461.8	1,145.0	0.00	0.00	0.00
4,240.0	20.32	23.79	4,043.1	1,060.4	467.4	1,158.9	0.00	0.00	0.00
4,280.0	20.32	23.79	4,080.6	1,073.1	473.0	1,172.7	0.00	0.00	0.00
4,320.0	20.32	23.79	4,118.2	1,085.8	478.6	1,186.6	0.00	0.00	0.00
4,360.0	20.32	23.79	4,155.7	1,098.5	484.3	1,200.5	0.00	0.00	0.00
4,400.0	20.32	23.79	4,193.2	1,111.2	489.9	1,214.4	0.00	0.00	0.00
4,440.0	20.32	23.79	4,230.7	1,123.9	495.5	1,228.3	0.00	0.00	0.00
4,480.0	20.32	23.79	4,268.2	1,136.6	501.1	1,242.2	0.00	0.00	0.00
4,520.0	20.32	23.79	4,305.7	1,149.4	506.7	1,256.1	0.00	0.00	0.00
4,560.0	20.32	23.79	4,343.2	1,162.1	512.3	1,270.0	0.00	0.00	0.00
4,600.0	20.32	23.79	4,380.7	1,174.8	517.9	1,283.9	0.00	0.00	0.00
4,640.0	20.32	23.79	4,418.2	1,187.5	523.5	1,297.7	0.00	0.00	0.00
4,680.0	20.32	23.79	4,455.8	1,200.2	529.1	1,311.6	0.00	0.00	0.00
4,720.0	20.32	23.79	4,493.3	1,212.9	534.7	1,325.5	0.00	0.00	0.00
4,760.0	20.32	23.79	4,530.8	1,225.6	540.3	1,339.4	0.00	0.00	0.00
4,800.0	20.32	23.79	4,568.3	1,238.3	545.9	1,353.3	0.00	0.00	0.00
4,840.0	20.32	23.79	4,605.8	1,251.0	551.5	1,367.2	0.00	0.00	0.00
4,880.0	20.32	23.79	4,643.3	1,263.7	557.1	1,381.1	0.00	0.00	0.00
4,920.0	20.32	23.79	4,680.8	1,276.4	562.7	1,395.0	0.00	0.00	0.00
4,960.0	20.32	23.79	4,718.3	1,289.2	568.3	1,408.9	0.00	0.00	0.00
5,000.0	20.32	23.79	4,755.8	1,301.9	573.9	1,422.7	0.00	0.00	0.00
5,040.0	20.32	23.79	4,793.4	1,314.6	579.5	1,436.6	0.00	0.00	0.00
5,080.0	20.32	23.79	4,830.9	1,327.3	585.1	1,450.5	0.00	0.00	0.00
5,120.0	20.32	23.79	4,868.4	1,340.0	590.7	1,464.4	0.00	0.00	0.00
5,159.3	20.32	23.79	4,905.3	1,352.5	596.2	1,478.1	0.00	0.00	0.00
5,160.0	20.30	23.79	4,905.9	1,352.7	596.3	1,478.3	2.00	-2.00	0.00
5,200.0	19.50	23.79	4,943.5	1,365.2	601.8	1,491.9	2.00	-2.00	0.00
5,240.0	18.70	23.79	4,981.3	1,377.1	607.1	1,505.0	2.00	-2.00	0.00
5,280.0	17.90	23.79	5,019.3	1,388.6	612.1	1,517.6	2.00	-2.00	0.00
5,320.0	17.10	23.79	5,057.4	1,399.6	617.0	1,529.6	2.00	-2.00	0.00
5,360.0	16.30	23.79	5,095.7	1,410.2	621.6	1,541.1	2.00	-2.00	0.00
5,400.0	15.50	23.79	5,134.2	1,420.2	626.1	1,552.1	2.00	-2.00	0.00
5,440.0	14.70	23.79	5,172.8	1,429.7	630.3	1,562.5	2.00	-2.00	0.00
5,480.0	13.90	23.79	5,211.6	1,438.8	634.2	1,572.4	2.00	-2.00	0.00
5,520.0	13.10	23.79	5,250.5	1,447.3	638.0	1,581.7	2.00	-2.00	0.00
5,560.0	12.30	23.79	5,289.5	1,455.4	641.6	1,590.5	2.00	-2.00	0.00
5,600.0	11.50	23.79	5,328.6	1,462.9	644.9	1,598.8	2.00	-2.00	0.00
5,640.0	10.70	23.79	5,367.9	1,470.0	648.0	1,606.5	2.00	-2.00	0.00
5,680.0	9.90	23.79	5,407.2	1,476.5	650.9	1,613.6	2.00	-2.00	0.00
5,720.0	9.10	23.79	5,446.7	1,482.6	653.5	1,620.2	2.00	-2.00	0.00
5,760.0	8.30	23.79	5,486.2	1,488.1	656.0	1,626.3	2.00	-2.00	0.00
5,800.0	7.50	23.79	5,525.8	1,493.1	658.2	1,631.8	2.00	-2.00	0.00
5,840.0	6.70	23.79	5,565.5	1,497.7	660.2	1,636.7	2.00	-2.00	0.00
5,880.0	5.90	23.79	5,605.3	1,501.7	662.0	1,641.1	2.00	-2.00	0.00
5,920.0	5.10	23.79	5,645.1	1,505.2	663.5	1,645.0	2.00	-2.00	0.00
5,960.0	4.30	23.79	5,685.0	1,508.2	664.8	1,648.2	2.00	-2.00	0.00
6,000.0	3.50	23.79	5,724.9	1,510.7	665.9	1,651.0	2.00	-2.00	0.00
6,040.0	2.70	23.79	5,764.8	1,512.7	666.8	1,653.1	2.00	-2.00	0.00
6,080.0	1.90	23.79	5,804.8	1,514.1	667.5	1,654.7	2.00	-2.00	0.00
6,120.0	1.10	23.79	5,844.8	1,515.1	667.9	1,655.8	2.00	-2.00	0.00
6,160.0	0.30	23.79	5,884.8	1,515.6	668.1	1,656.3	2.00	-2.00	0.00
6,175.2	0.00	0.00	5,900.0	1,515.6	668.1	1,656.3	2.00	-2.00	-156.20
TARGET BHL 1306'FNL, 75'FEL									
6,200.0	0.00	0.00	5,924.8	1,515.6	668.1	1,656.3	0.00	0.00	0.00

<b>Database:</b>	Landmark	<b>Local Co-ordinate Reference:</b>	Well SRC GCC 10VD
<b>Company:</b>	Synergy Resources	<b>TVD Reference:</b>	WELL @ 4871.0ft (Original Well Elev)
<b>Project:</b>	SEC.10-T5N-R66W	<b>MD Reference:</b>	WELL @ 4871.0ft (Original Well Elev)
<b>Site:</b>	SRC Aims/GCC Pad Sec.10-T5N-R66W	<b>North Reference:</b>	True
<b>Well:</b>	SRC GCC 10VD	<b>Survey Calculation Method:</b>	Minimum Curvature
<b>Wellbore:</b>	Wellbore #1		
<b>Design:</b>	Plan #2 (9-21-11)		

Planned Survey									
Measured Depth (ft)	Inclination (°)	Azimuth (°)	Vertical Depth (ft)	+N/-S (ft)	+E/-W (ft)	Vertical Section (ft)	Dogleg Rate (°/100ft)	Build Rate (°/100ft)	Turn Rate (°/100ft)
6,240.0	0.00	0.00	5,964.8	1,515.6	668.1	1,656.3	0.00	0.00	0.00
6,280.0	0.00	0.00	6,004.8	1,515.6	668.1	1,656.3	0.00	0.00	0.00
6,320.0	0.00	0.00	6,044.8	1,515.6	668.1	1,656.3	0.00	0.00	0.00
6,360.0	0.00	0.00	6,084.8	1,515.6	668.1	1,656.3	0.00	0.00	0.00
6,400.0	0.00	0.00	6,124.8	1,515.6	668.1	1,656.3	0.00	0.00	0.00
6,440.0	0.00	0.00	6,164.8	1,515.6	668.1	1,656.3	0.00	0.00	0.00
6,480.0	0.00	0.00	6,204.8	1,515.6	668.1	1,656.3	0.00	0.00	0.00
6,520.0	0.00	0.00	6,244.8	1,515.6	668.1	1,656.3	0.00	0.00	0.00
6,560.0	0.00	0.00	6,284.8	1,515.6	668.1	1,656.3	0.00	0.00	0.00
6,600.0	0.00	0.00	6,324.8	1,515.6	668.1	1,656.3	0.00	0.00	0.00
6,640.0	0.00	0.00	6,364.8	1,515.6	668.1	1,656.3	0.00	0.00	0.00
6,680.0	0.00	0.00	6,404.8	1,515.6	668.1	1,656.3	0.00	0.00	0.00
6,720.0	0.00	0.00	6,444.8	1,515.6	668.1	1,656.3	0.00	0.00	0.00
6,760.0	0.00	0.00	6,484.8	1,515.6	668.1	1,656.3	0.00	0.00	0.00
6,800.0	0.00	0.00	6,524.8	1,515.6	668.1	1,656.3	0.00	0.00	0.00
6,840.0	0.00	0.00	6,564.8	1,515.6	668.1	1,656.3	0.00	0.00	0.00
6,880.0	0.00	0.00	6,604.8	1,515.6	668.1	1,656.3	0.00	0.00	0.00
6,920.0	0.00	0.00	6,644.8	1,515.6	668.1	1,656.3	0.00	0.00	0.00
6,960.0	0.00	0.00	6,684.8	1,515.6	668.1	1,656.3	0.00	0.00	0.00
7,000.0	0.00	0.00	6,724.8	1,515.6	668.1	1,656.3	0.00	0.00	0.00
7,040.0	0.00	0.00	6,764.8	1,515.6	668.1	1,656.3	0.00	0.00	0.00
7,080.0	0.00	0.00	6,804.8	1,515.6	668.1	1,656.3	0.00	0.00	0.00
7,120.0	0.00	0.00	6,844.8	1,515.6	668.1	1,656.3	0.00	0.00	0.00
7,160.0	0.00	0.00	6,884.8	1,515.6	668.1	1,656.3	0.00	0.00	0.00
7,200.0	0.00	0.00	6,924.8	1,515.6	668.1	1,656.3	0.00	0.00	0.00
7,240.0	0.00	0.00	6,964.8	1,515.6	668.1	1,656.3	0.00	0.00	0.00
7,280.0	0.00	0.00	7,004.8	1,515.6	668.1	1,656.3	0.00	0.00	0.00
7,320.0	0.00	0.00	7,044.8	1,515.6	668.1	1,656.3	0.00	0.00	0.00
7,360.0	0.00	0.00	7,084.8	1,515.6	668.1	1,656.3	0.00	0.00	0.00
7,400.0	0.00	0.00	7,124.8	1,515.6	668.1	1,656.3	0.00	0.00	0.00
7,440.0	0.00	0.00	7,164.8	1,515.6	668.1	1,656.3	0.00	0.00	0.00
7,480.0	0.00	0.00	7,204.8	1,515.6	668.1	1,656.3	0.00	0.00	0.00
7,520.0	0.00	0.00	7,244.8	1,515.6	668.1	1,656.3	0.00	0.00	0.00
7,560.0	0.00	0.00	7,284.8	1,515.6	668.1	1,656.3	0.00	0.00	0.00
7,600.0	0.00	0.00	7,324.8	1,515.6	668.1	1,656.3	0.00	0.00	0.00
7,640.0	0.00	0.00	7,364.8	1,515.6	668.1	1,656.3	0.00	0.00	0.00
7,680.0	0.00	0.00	7,404.8	1,515.6	668.1	1,656.3	0.00	0.00	0.00
7,720.0	0.00	0.00	7,444.8	1,515.6	668.1	1,656.3	0.00	0.00	0.00
7,760.0	0.00	0.00	7,484.8	1,515.6	668.1	1,656.3	0.00	0.00	0.00
7,800.0	0.00	0.00	7,524.8	1,515.6	668.1	1,656.3	0.00	0.00	0.00
7,840.0	0.00	0.00	7,564.8	1,515.6	668.1	1,656.3	0.00	0.00	0.00
7,880.0	0.00	0.00	7,604.8	1,515.6	668.1	1,656.3	0.00	0.00	0.00
7,920.0	0.00	0.00	7,644.8	1,515.6	668.1	1,656.3	0.00	0.00	0.00
7,960.0	0.00	0.00	7,684.8	1,515.6	668.1	1,656.3	0.00	0.00	0.00
8,000.0	0.00	0.00	7,724.8	1,515.6	668.1	1,656.3	0.00	0.00	0.00
8,040.0	0.00	0.00	7,764.8	1,515.6	668.1	1,656.3	0.00	0.00	0.00
8,080.0	0.00	0.00	7,804.8	1,515.6	668.1	1,656.3	0.00	0.00	0.00
8,120.0	0.00	0.00	7,844.8	1,515.6	668.1	1,656.3	0.00	0.00	0.00
8,160.0	0.00	0.00	7,884.8	1,515.6	668.1	1,656.3	0.00	0.00	0.00
8,200.0	0.00	0.00	7,924.8	1,515.6	668.1	1,656.3	0.00	0.00	0.00
8,240.0	0.00	0.00	7,964.8	1,515.6	668.1	1,656.3	0.00	0.00	0.00
8,240.2	0.00	0.00	7,965.0	1,515.6	668.1	1,656.3	0.00	0.00	0.00
HARDLINE 75'E OF BHL									

<b>Database:</b>	Landmark	<b>Local Co-ordinate Reference:</b>	Well SRC GCC 10VD
<b>Company:</b>	Synergy Resources	<b>TVD Reference:</b>	WELL @ 4871.0ft (Original Well Elev)
<b>Project:</b>	SEC.10-T5N-R66W	<b>MD Reference:</b>	WELL @ 4871.0ft (Original Well Elev)
<b>Site:</b>	SRC Aims/GCC Pad Sec.10-T5N-R66W	<b>North Reference:</b>	True
<b>Well:</b>	SRC GCC 10VD	<b>Survey Calculation Method:</b>	Minimum Curvature
<b>Wellbore:</b>	Wellbore #1		
<b>Design:</b>	Plan #2 (9-21-11)		

Targets									
Target Name									
- hit/miss target	Dip Angle	Dip Dir.	TVD	+N/-S	+E/-W	Northing	Easting	Latitude	Longitude
- Shape	(°)	(°)	(ft)	(ft)	(ft)	(ft)	(ft)		
TARGET BHL 1306'F	0.00	0.00	5,900.0	1,515.6	668.1	342,889.08	4,108,137.06	40.417720	-104.756600
- plan hits target center									
- Point									
HARDLINE 75'E OF E	0.00	0.00	7,965.0	1,415.6	743.1	342,793.58	4,108,218.15	40.417446	-104.756330
- plan misses target center by 125.0ft at 8240.2ft MD (7965.0 TVD, 1515.6 N, 668.1 E)									
- Polygon									
Point 1			7,965.0	0.0	0.0	342,793.58	4,108,218.15		
Point 2			7,965.0	200.0	0.0	342,993.70	4,108,206.06		

Casing Points					
	Measured Depth	Vertical Depth		Casing Diameter	Hole Diameter
	(ft)	(ft)	Name	(")	(")
	700.6	700.0	8 5/8"	8-5/8	12-1/4





# **Directional**

## **Synergy Resources**

**SEC.10-T5N-R66W**

**SRC Aims/GCC Pad Sec.10-T5N-R66W**

**SRC GCC 10VD**

**Wellbore #1**

**Plan #2 (9-21-11)**

## **Anticollision Report**

**05 October, 2011**



<b>Company:</b>	Synergy Resources	<b>Local Co-ordinate Reference:</b>	Well SRC GCC 10VD
<b>Project:</b>	SEC.10-T5N-R66W	<b>TVD Reference:</b>	WELL @ 4871.0ft (Original Well Elev)
<b>Reference Site:</b>	SRC Aims/GCC Pad Sec.10-T5N-R66W	<b>MD Reference:</b>	WELL @ 4871.0ft (Original Well Elev)
<b>Site Error:</b>	0.0ft	<b>North Reference:</b>	True
<b>Reference Well:</b>	SRC GCC 10VD	<b>Survey Calculation Method:</b>	Minimum Curvature
<b>Well Error:</b>	0.0ft	<b>Output errors are at</b>	2.00 sigma
<b>Reference Wellbore</b>	Wellbore #1	<b>Database:</b>	Landmark
<b>Reference Design:</b>	Plan #2 (9-21-11)	<b>Offset TVD Reference:</b>	Offset Datum

Offset Design												Offset Site Error:	0.0ft
Survey Program: 0-MWD												Offset Well Error:	0.0ft
Reference		Offset		Semi Major Axis			Distance						Warning
Measured Depth (ft)	Vertical Depth (ft)	Measured Depth (ft)	Vertical Depth (ft)	Reference (ft)	Offset (ft)	Highside Toolface (°)	Offset Wellbore Centre +N/-S (ft)	+E/-W (ft)	Between Centres (ft)	Between Ellipses (ft)	Minimum Separation (ft)	Separation Factor	
2,000.0	1,942.5	1,988.0	1,910.5	8.3	9.4	52.66	367.2	255.8	108.5	93.8	14.75	7.359	
2,100.0	2,036.3	2,087.6	2,001.4	9.0	10.2	52.24	401.3	278.0	117.6	101.7	15.85	7.416	
2,200.0	2,130.1	2,187.2	2,092.3	9.6	11.0	51.88	435.4	300.3	126.6	109.6	16.96	7.465	
2,300.0	2,223.8	2,286.8	2,183.2	10.3	11.8	51.57	469.5	322.6	135.6	117.6	18.07	7.507	
2,400.0	2,317.6	2,386.4	2,274.1	11.0	12.6	51.29	503.6	344.9	144.7	125.5	19.18	7.543	
2,500.0	2,411.4	2,486.0	2,364.9	11.7	13.4	51.05	537.7	367.1	153.7	133.4	20.29	7.575	
2,600.0	2,505.2	2,585.5	2,455.8	12.3	14.2	50.84	571.8	389.4	162.8	141.4	21.41	7.604	
2,700.0	2,598.9	2,685.1	2,546.7	13.0	15.0	50.65	605.9	411.7	171.8	149.3	22.52	7.629	
2,800.0	2,692.7	2,784.7	2,637.6	13.7	15.8	50.48	640.0	434.0	180.9	157.2	23.64	7.652	
2,900.0	2,786.5	2,884.3	2,728.4	14.4	16.6	50.32	674.1	456.3	189.9	165.2	24.76	7.672	
3,000.0	2,880.3	2,983.9	2,819.3	15.1	17.4	50.18	708.2	478.5	199.0	173.1	25.87	7.691	
3,100.0	2,974.1	3,083.5	2,910.2	15.7	18.2	50.05	742.3	500.8	208.1	181.1	26.99	7.708	
3,200.0	3,067.8	3,183.1	3,001.1	16.4	19.0	49.93	776.4	523.1	217.1	189.0	28.11	7.723	
3,300.0	3,161.6	3,282.7	3,091.9	17.1	19.8	49.82	810.5	545.4	226.2	196.9	29.23	7.737	
3,400.0	3,255.4	3,382.2	3,182.8	17.8	20.6	49.72	844.6	567.6	235.2	204.9	30.35	7.750	
3,500.0	3,349.2	3,481.8	3,273.7	18.5	21.5	49.63	878.7	589.9	244.3	212.8	31.47	7.762	
3,600.0	3,442.9	3,581.4	3,364.6	19.2	22.3	49.54	912.8	612.2	253.4	220.8	32.59	7.773	
3,700.0	3,536.7	3,681.0	3,455.4	19.8	23.1	49.46	946.9	634.5	262.4	228.7	33.71	7.784	
3,800.0	3,630.5	3,780.6	3,546.3	20.5	23.9	49.39	981.0	656.7	271.5	236.6	34.84	7.793	
3,900.0	3,724.3	3,880.2	3,637.2	21.2	24.7	49.32	1,015.1	679.0	280.5	244.6	35.96	7.802	
4,000.0	3,818.1	3,979.8	3,728.1	21.9	25.5	49.25	1,049.2	701.3	289.6	252.5	37.08	7.811	
4,100.0	3,911.8	4,079.4	3,819.0	22.6	26.3	49.19	1,083.3	723.6	298.7	260.5	38.20	7.819	
4,200.0	4,005.6	4,179.0	3,909.8	23.3	27.1	49.13	1,117.4	745.9	307.7	268.4	39.32	7.826	
4,300.0	4,099.4	4,278.5	4,000.7	24.0	27.9	49.08	1,151.5	768.1	316.8	276.4	40.45	7.833	
4,400.0	4,193.2	4,378.1	4,091.6	24.6	28.7	49.03	1,185.6	790.4	325.9	284.3	41.57	7.839	
4,500.0	4,287.0	4,477.7	4,182.5	25.3	29.5	48.98	1,219.7	812.7	334.9	292.2	42.69	7.846	
4,600.0	4,380.7	4,577.3	4,273.3	26.0	30.3	48.93	1,253.8	835.0	344.0	300.2	43.81	7.851	
4,700.0	4,474.5	4,676.9	4,364.2	26.7	31.1	48.89	1,287.9	857.2	353.1	308.1	44.94	7.857	
4,800.0	4,568.3	4,776.5	4,455.1	27.4	31.9	48.84	1,322.0	879.5	362.1	316.1	46.06	7.862	
4,900.0	4,662.1	4,876.1	4,546.0	28.1	32.7	48.80	1,356.1	901.8	371.2	324.0	47.18	7.867	
5,000.0	4,755.8	4,975.7	4,636.8	28.8	33.5	48.77	1,390.2	924.1	380.3	332.0	48.31	7.872	
5,100.0	4,849.6	5,075.2	4,727.7	29.4	34.4	48.73	1,424.3	946.4	389.3	339.9	49.43	7.876	
5,159.3	4,905.3	5,134.3	4,781.6	29.9	34.8	48.71	1,444.6	959.6	394.7	344.6	50.10	7.879	
5,200.0	4,943.5	5,174.8	4,818.6	30.1	35.2	48.72	1,458.4	968.6	398.6	348.1	50.53	7.889	
5,300.0	5,038.3	5,274.1	4,909.2	30.6	36.0	48.53	1,492.4	990.9	409.7	358.4	51.37	7.977	
5,400.0	5,134.2	5,373.1	4,999.5	31.0	36.8	48.03	1,526.3	1,013.0	423.2	371.2	51.99	8.141	
5,500.0	5,231.0	5,471.5	5,089.4	31.5	37.6	47.27	1,560.0	1,035.0	439.1	386.7	52.39	8.381	
5,600.0	5,328.6	5,569.4	5,178.6	31.8	38.4	46.30	1,593.5	1,056.9	457.5	404.9	52.61	8.697	
5,700.0	5,426.9	5,666.4	5,267.2	32.1	39.1	45.17	1,626.8	1,078.6	478.5	425.9	52.64	9.091	
5,800.0	5,525.8	5,762.7	5,355.0	32.4	39.9	43.92	1,659.7	1,100.1	502.2	449.7	52.51	9.565	
5,900.0	5,625.2	5,857.9	5,441.9	32.6	40.7	42.59	1,692.3	1,121.4	528.8	476.5	52.24	10.122	
6,000.0	5,724.9	5,952.0	5,527.8	32.8	41.5	41.22	1,724.6	1,142.5	558.3	506.4	51.86	10.765	
6,100.0	5,824.8	6,044.9	5,612.6	33.0	42.2	39.85	1,756.4	1,163.3	590.8	539.4	51.39	11.497	
6,175.2	5,900.0	6,114.0	5,675.6	33.0	42.8	62.62	1,780.0	1,178.7	617.3	566.3	50.98	12.108	
6,200.0	5,924.8	6,136.6	5,696.2	33.1	43.0	62.17	1,787.8	1,183.8	626.3	575.5	50.81	12.326	
6,300.0	6,024.8	6,227.8	5,779.5	33.1	43.7	60.49	1,819.0	1,204.2	663.0	612.8	50.19	13.211	
6,400.0	6,124.8	6,330.8	5,873.6	33.2	44.4	58.81	1,853.9	1,227.0	699.9	650.3	49.59	14.115	
6,500.0	6,224.8	6,431.3	5,985.4	33.3	45.1	57.21	1,891.5	1,251.5	734.2	685.1	49.03	14.973	
6,600.0	6,324.8	6,575.8	6,102.8	33.4	45.8	55.88	1,926.2	1,274.2	765.0	716.3	48.67	15.719	
6,700.0	6,424.8	6,703.9	6,225.4	33.5	46.4	54.81	1,957.4	1,294.6	792.1	743.7	48.45	16.348	
6,800.0	6,524.8	6,835.3	6,352.7	33.6	46.9	53.95	1,984.6	1,312.4	815.3	766.9	48.36	16.858	
6,900.0	6,624.8	6,969.5	6,484.1	33.6	47.4	53.27	2,007.3	1,327.2	834.3	785.9	48.37	17.247	

CC - Min centre to center distance or convergent point, SF - min separation factor, ES - min ellipse separation

SRC Aims/GCC Pad Sec.10-T5N-R66W - SRC GCC 11-11D - Wellbore #1 - Plan #2 (9-21-11)													Offset Site Error:	0.0 ft
Survey Program: 0-MWD													Offset Well Error:	0.0 ft
Reference		Offset		Semi Major Axis			Distance							
Measured Depth	Vertical Depth	Measured Depth	Vertical Depth	Reference	Offset	Highside Toolface	Offset Wellbore Centre		Between Centres	Between Ellipses	Minimum Separation	Separation Factor	Warning	
(ft)	(ft)	(ft)	(ft)	(ft)	(ft)	(°)	+N/-S (ft)	+E/-W (ft)	(ft)	(ft)	(ft)			
7,000.0	6,724.8	7,072.4	6,585.5	33.7	47.8	52.85	2,022.3	1,337.0	850.7	802.2	48.48	17.545		
7,100.0	6,824.8	7,170.9	6,682.4	33.8	48.1	52.47	2,036.6	1,346.4	867.1	818.4	48.62	17.835		
7,200.0	6,924.8	7,269.4	6,779.4	33.9	48.5	52.10	2,051.0	1,355.7	883.5	834.7	48.76	18.118		
7,300.0	7,024.8	7,367.9	6,876.4	34.0	48.9	51.74	2,065.3	1,365.1	900.0	851.0	48.92	18.396		
7,400.0	7,124.8	7,466.4	6,973.4	34.1	49.2	51.39	2,079.6	1,374.4	916.5	867.4	49.09	18.668		
7,500.0	7,224.8	7,564.8	7,070.4	34.2	49.6	51.06	2,093.9	1,383.8	933.0	883.7	49.28	18.934		
7,600.0	7,324.8	7,663.3	7,167.4	34.3	50.0	50.74	2,108.2	1,393.1	949.6	900.1	49.47	19.195		
7,700.0	7,424.8	7,761.8	7,264.4	34.4	50.3	50.43	2,122.5	1,402.5	966.1	916.5	49.67	19.450		
7,800.0	7,524.8	7,860.3	7,361.3	34.5	50.7	50.13	2,136.9	1,411.8	982.8	932.9	49.89	19.700		
7,900.0	7,624.8	7,958.8	7,458.3	34.6	51.1	49.84	2,151.2	1,421.2	999.4	949.3	50.11	19.945		
8,000.0	7,724.8	8,057.2	7,555.3	34.7	51.5	49.56	2,165.5	1,430.5	1,016.1	965.7	50.34	20.184		
8,100.0	7,824.8	8,155.7	7,652.3	34.8	51.8	49.28	2,179.8	1,439.9	1,032.8	982.2	50.58	20.419		
8,200.0	7,924.8	8,254.2	7,749.3	34.9	52.2	49.02	2,194.1	1,449.2	1,049.5	998.6	50.83	20.648		
8,240.2	7,965.0	8,293.8	7,788.3	35.0	52.3	48.92	2,199.9	1,453.0	1,056.2	1,005.3	50.93	20.738		

SRC Aims/GCC Pad Sec.10-T5N-R66W - SRC GCC 42-10D - Wellbore #1 - Plan #2 (9-21-11)												Offset Site Error:	0.0 ft
Offset Design												Offset Well Error:	0.0 ft
Reference		Offset		Semi Major Axis			Distance						
Measured Depth	Vertical Depth	Measured Depth	Vertical Depth	Reference	Offset	Highside Toolface	Offset Wellbore Centre		Between Centres	Between Ellipses	Minimum Separation	Separation Factor	Warning
(ft)	(ft)	(ft)	(ft)	(ft)	(ft)	(°)	+N/-S (ft)	+E/-W (ft)	(ft)	(ft)	(ft)		
0.0	0.0	0.0	0.0	0.0	0.0	-62.50	7.3	-14.0	15.8	15.8	0.00	N/A	
100.0	100.0	100.0	100.0	0.1	0.1	-62.50	7.3	-14.0	15.8	15.5	0.22	70.159	
200.0	200.0	200.0	200.0	0.3	0.3	-62.50	7.3	-14.0	15.8	15.1	0.67	23.386	
300.0	300.0	300.0	300.0	0.6	0.6	-62.50	7.3	-14.0	15.8	14.6	1.12	14.032 CC, ES	
400.0	400.0	399.8	399.8	0.8	0.8	-56.52	9.0	-13.6	16.3	14.7	1.57	10.341	
500.0	500.0	499.5	499.4	1.0	1.0	-70.00	14.0	-12.3	18.0	15.9	2.02	8.876	
600.0	599.8	599.1	598.5	1.2	1.3	-62.59	22.4	-10.1	20.6	18.1	2.49	8.286	
700.0	699.5	698.5	697.2	1.5	1.5	-57.80	34.1	-7.2	24.0	21.0	2.98	8.054	
800.0	798.7	797.8	795.3	1.7	1.8	-54.98	49.1	-3.3	27.9	24.4	3.51	7.964	
900.0	897.5	897.3	893.0	2.0	2.2	-53.80	67.2	1.3	32.2	28.1	4.08	7.876	
1,000.0	995.6	997.2	991.0	2.4	2.6	-56.63	86.1	6.1	34.9	30.2	4.74	7.365	
1,100.0	1,093.1	1,097.1	1,089.0	2.8	3.0	-63.80	105.0	10.9	36.1	30.6	5.54	6.519	
1,200.0	1,189.6	1,196.8	1,186.8	3.3	3.4	-75.54	123.9	15.7	36.8	30.3	6.50	5.659	
1,300.0	1,285.3	1,296.2	1,284.3	3.8	3.8	-91.46	142.7	20.5	38.8	31.3	7.53	5.158 SF	
1,400.0	1,379.8	1,395.2	1,381.4	4.4	4.2	-109.03	161.4	25.3	44.6	36.2	8.37	5.323	
1,415.9	1,394.7	1,410.9	1,396.7	4.5	4.2	-111.72	164.4	26.0	45.9	37.4	8.48	5.418	
1,500.0	1,473.6	1,493.9	1,478.1	5.0	4.6	-123.77	180.1	30.0	54.7	45.8	8.93	6.126	
1,600.0	1,567.4	1,592.5	1,574.9	5.6	5.0	-133.56	198.8	34.8	67.3	57.9	9.39	7.169	
1,700.0	1,661.2	1,691.2	1,671.6	6.3	5.4	-140.16	217.4	39.5	81.3	71.4	9.86	8.245	
1,800.0	1,754.9	1,789.9	1,768.4	6.9	5.8	-144.80	236.1	44.3	96.0	85.6	10.35	9.273	
1,900.0	1,848.7	1,888.5	1,865.2	7.6	6.2	-148.19	254.8	49.1	111.1	100.2	10.87	10.224	
2,000.0	1,942.5	1,987.2	1,961.9	8.3	6.6	-150.76	273.5	53.8	126.6	115.1	11.41	11.094	
2,100.0	2,036.3	2,085.8	2,058.7	9.0	7.0	-152.78	292.1	58.6	142.2	130.2	11.96	11.885	
2,200.0	2,130.1	2,184.5	2,155.4	9.6	7.5	-154.39	310.8	63.3	158.0	145.4	12.53	12.603	
2,300.0	2,223.8	2,283.2	2,252.2	10.3	7.9	-155.71	329.5	68.1	173.8	160.7	13.11	13.257	
2,400.0	2,317.6	2,381.8	2,349.0	11.0	8.3	-156.81	348.1	72.8	189.8	176.1	13.70	13.853	
2,500.0	2,411.4	2,480.5	2,445.7	11.7	8.7	-157.74	366.8	77.6	205.8	191.5	14.29	14.397	
2,600.0	2,505.2	2,579.1	2,542.5	12.3	9.1	-158.53	385.5	82.4	221.8	206.9	14.89	14.896	
2,700.0	2,598.9	2,677.8	2,639.3	13.0	9.5	-159.22	404.1	87.1	237.9	222.4	15.50	15.354	
2,800.0	2,692.7	2,776.5	2,736.0	13.7	9.9	-159.82	422.8	91.9	254.0	237.9	16.10	15.777	
2,900.0	2,786.5	2,875.1	2,832.8	14.4	10.4	-160.35	441.5	96.6	270.2	253.5	16.71	16.167	
3,000.0	2,880.3	2,973.8	2,929.5	15.1	10.8	-160.82	460.2	101.4	286.3	269.0	17.32	16.529	
3,100.0	2,974.1	3,072.4	3,026.3	15.7	11.2	-161.24	478.8	106.1	302.5	284.6	17.94	16.864	
3,200.0	3,067.8	3,171.1	3,123.1	16.4	11.6	-161.61	497.5	110.9	318.7	300.1	18.55	17.177	
3,300.0	3,161.6	3,269.8	3,219.8	17.1	12.0	-161.95	516.2	115.6	334.9	315.7	19.17	17.469	
3,400.0	3,255.4	3,368.4	3,316.6	17.8	12.4	-162.26	534.8	120.4	351.1	331.3	19.79	17.741	
3,500.0	3,349.2	3,467.1	3,413.3	18.5	12.9	-162.54	553.5	125.2	367.3	346.9	20.41	17.997	
3,600.0	3,442.9	3,565.8	3,510.1	19.2	13.3	-162.80	572.2	129.9	383.6	362.5	21.03	18.237	
3,700.0	3,536.7	3,664.4	3,606.9	19.8	13.7	-163.04	590.8	134.7	399.8	378.1	21.65	18.462	
3,800.0	3,630.5	3,763.1	3,703.6	20.5	14.1	-163.25	609.5	139.4	416.0	393.8	22.28	18.675	
3,900.0	3,724.3	3,861.7	3,800.4	21.2	14.5	-163.46	628.2	144.2	432.3	409.4	22.90	18.876	
4,000.0	3,818.1	3,960.4	3,897.1	21.9	14.9	-163.64	646.9	148.9	448.5	425.0	23.53	19.065	
4,100.0	3,911.8	4,059.1	3,993.9	22.6	15.4	-163.82	665.5	153.7	464.8	440.6	24.15	19.245	
4,200.0	4,005.6	4,157.7	4,090.7	23.3	15.8	-163.98	684.2	158.5	481.0	456.3	24.78	19.415	
4,300.0	4,099.4	4,256.4	4,187.4	24.0	16.2	-164.13	702.9	163.2	497.3	471.9	25.40	19.576	
4,400.0	4,193.2	4,355.0	4,284.2	24.6	16.6	-164.27	721.5	168.0	513.6	487.5	26.03	19.729	
4,500.0	4,287.0	4,453.7	4,380.9	25.3	17.0	-164.41	740.2	172.7	529.8	503.2	26.66	19.875	
4,600.0	4,380.7	4,546.8	4,472.3	26.0	17.4	-164.53	757.6	177.2	546.3	519.1	27.26	20.042	
4,700.0	4,474.5	4,630.3	4,554.5	26.7	17.7	-164.73	771.4	180.7	564.9	537.1	27.78	20.334	
4,800.0	4,568.3	4,712.8	4,636.3	27.4	17.9	-165.00	782.7	183.5	586.1	557.8	28.26	20.743	
4,900.0	4,662.1	4,800.0	4,722.9	28.1	18.1	-165.38	792.1	185.9	609.9	581.2	28.70	21.250	
5,000.0	4,755.8	4,874.6	4,797.2	28.8	18.3	-165.76	798.2	187.5	636.2	607.1	29.10	21.858	

COMPASS 2003.21 Build 46

<b>Company:</b>	Synergy Resources	<b>Local Co-ordinate Reference:</b>	Well SRC GCC 10VD
<b>Project:</b>	SEC.10-T5N-R66W	<b>TVD Reference:</b>	WELL @ 4871.0ft (Original Well Elev)
<b>Reference Site:</b>	SRC Aims/GCC Pad Sec.10-T5N-R66W	<b>MD Reference:</b>	WELL @ 4871.0ft (Original Well Elev)
<b>Site Error:</b>	0.0ft	<b>North Reference:</b>	True
<b>Reference Well:</b>	SRC GCC 10VD	<b>Survey Calculation Method:</b>	Minimum Curvature
<b>Well Error:</b>	0.0ft	<b>Output errors are at</b>	2.00 sigma
<b>Reference Wellbore</b>	Wellbore #1	<b>Database:</b>	Landmark
<b>Reference Design:</b>	Plan #2 (9-21-11)	<b>Offset TVD Reference:</b>	Offset Datum

Offset Design												Offset Site Error:	0.0ft
Survey Program: 0-MWD												Offset Well Error:	0.0ft
Reference		Offset		Semi Major Axis			Distance						Warning
Measured Depth (ft)	Vertical Depth (ft)	Measured Depth (ft)	Vertical Depth (ft)	Reference (ft)	Offset (ft)	Highside Toolface (°)	Offset Wellbore Centre +N/-S (ft)	+E/-W (ft)	Between Centres (ft)	Between Ellipses (ft)	Minimum Separation (ft)	Separation Factor	
5,100.0	4,849.6	4,953.6	4,876.2	29.4	18.4	-166.21	802.6	188.6	665.0	635.5	29.49	22.550	
5,159.3	4,905.3	5,000.0	4,922.5	29.9	18.5	-166.50	804.1	189.0	683.2	653.5	29.71	22.997	
5,200.0	4,943.5	5,031.4	4,953.9	30.1	18.5	-166.75	804.8	189.2	696.0	666.1	29.86	23.306	
5,300.0	5,038.3	5,115.9	5,038.3	30.6	18.6	-167.39	805.2	189.3	726.6	696.4	30.20	24.056	
5,400.0	5,134.2	5,211.7	5,134.2	31.0	18.7	-167.98	805.2	189.3	754.4	723.8	30.55	24.696	
5,500.0	5,231.0	5,308.5	5,231.0	31.5	18.9	-168.47	805.2	189.3	778.9	748.0	30.88	25.228	
5,600.0	5,328.6	5,406.2	5,328.6	31.8	19.0	-168.86	805.2	189.3	800.2	769.0	31.18	25.660	
5,700.0	5,426.9	5,504.5	5,426.9	32.1	19.1	-169.18	805.2	189.3	818.1	786.6	31.47	25.998	
5,800.0	5,525.8	5,603.4	5,525.8	32.4	19.3	-169.42	805.2	189.3	832.6	800.9	31.72	26.249	
5,900.0	5,625.2	5,702.7	5,625.2	32.6	19.4	-169.60	805.2	189.3	843.7	811.8	31.94	26.415	
6,000.0	5,724.9	5,802.4	5,724.9	32.8	19.5	-169.73	805.2	189.3	851.5	819.3	32.13	26.501	
6,100.0	5,824.8	5,902.3	5,824.8	33.0	19.7	-169.79	805.2	189.3	855.8	823.5	32.28	26.508	
6,175.2	5,900.0	5,977.5	5,900.0	33.0	19.8	-146.02	805.2	189.3	856.7	824.4	32.38	26.462	
6,200.0	5,924.8	6,002.3	5,924.8	33.1	19.8	-146.02	805.2	189.3	856.7	824.3	32.46	26.396	
6,300.0	6,024.8	6,102.3	6,024.8	33.1	19.9	-146.02	805.2	189.3	856.7	823.9	32.80	26.119	
6,400.0	6,124.8	6,202.3	6,124.8	33.2	20.1	-146.02	805.2	189.3	856.7	823.6	33.15	25.847	
6,500.0	6,224.8	6,302.3	6,224.8	33.3	20.2	-146.02	805.2	189.3	856.7	823.2	33.50	25.578	
6,600.0	6,324.8	6,402.3	6,324.8	33.4	20.4	-146.02	805.2	189.3	856.7	822.9	33.85	25.313	
6,700.0	6,424.8	6,502.3	6,424.8	33.5	20.5	-146.02	805.2	189.3	856.7	822.5	34.20	25.052	
6,800.0	6,524.8	6,602.3	6,524.8	33.6	20.7	-146.02	805.2	189.3	856.7	822.2	34.55	24.795	
6,900.0	6,624.8	6,702.3	6,624.8	33.6	20.8	-146.02	805.2	189.3	856.7	821.8	34.91	24.541	
7,000.0	6,724.8	6,802.3	6,724.8	33.7	21.0	-146.02	805.2	189.3	856.7	821.5	35.27	24.291	
7,100.0	6,824.8	6,902.3	6,824.8	33.8	21.1	-146.02	805.2	189.3	856.7	821.1	35.63	24.045	
7,200.0	6,924.8	7,002.3	6,924.8	33.9	21.3	-146.02	805.2	189.3	856.7	820.8	35.99	23.803	
7,300.0	7,024.8	7,102.3	7,024.8	34.0	21.4	-146.02	805.2	189.3	856.7	820.4	36.36	23.564	
7,400.0	7,124.8	7,202.3	7,124.8	34.1	21.6	-146.02	805.2	189.3	856.7	820.0	36.73	23.329	
7,500.0	7,224.8	7,302.3	7,224.8	34.2	21.7	-146.02	805.2	189.3	856.7	819.7	37.09	23.097	
7,600.0	7,324.8	7,402.3	7,324.8	34.3	21.9	-146.02	805.2	189.3	856.7	819.3	37.46	22.869	
7,700.0	7,424.8	7,502.3	7,424.8	34.4	22.1	-146.02	805.2	189.3	856.7	818.9	37.84	22.644	
7,800.0	7,524.8	7,602.3	7,524.8	34.5	22.2	-146.02	805.2	189.3	856.7	818.5	38.21	22.423	
7,900.0	7,624.8	7,702.3	7,624.8	34.6	22.4	-146.02	805.2	189.3	856.7	818.2	38.58	22.205	
8,000.0	7,724.8	7,802.3	7,724.8	34.7	22.6	-146.02	805.2	189.3	856.7	817.8	38.96	21.990	
8,100.0	7,824.8	7,902.3	7,824.8	34.8	22.7	-146.02	805.2	189.3	856.7	817.4	39.34	21.779	
8,200.0	7,924.8	8,002.3	7,924.8	34.9	22.9	-146.02	805.2	189.3	856.7	817.0	39.72	21.571	
8,240.2	7,965.0	8,042.5	7,965.0	35.0	22.9	-146.02	805.2	189.3	856.7	816.9	39.87	21.488	

<b>Company:</b>	Synergy Resources	<b>Local Co-ordinate Reference:</b>	Well SRC GCC 10VD
<b>Project:</b>	SEC.10-T5N-R66W	<b>TVD Reference:</b>	WELL @ 4871.0ft (Original Well Elev)
<b>Reference Site:</b>	SRC Aims/GCC Pad Sec.10-T5N-R66W	<b>MD Reference:</b>	WELL @ 4871.0ft (Original Well Elev)
<b>Site Error:</b>	0.0ft	<b>North Reference:</b>	True
<b>Reference Well:</b>	SRC GCC 10VD	<b>Survey Calculation Method:</b>	Minimum Curvature
<b>Well Error:</b>	0.0ft	<b>Output errors are at</b>	2.00 sigma
<b>Reference Wellbore</b>	Wellbore #1	<b>Database:</b>	Landmark
<b>Reference Design:</b>	Plan #2 (9-21-11)	<b>Offset TVD Reference:</b>	Offset Datum

Reference Depths are relative to WELL @ 4871.0ft (Original Well Elev) Coordinates are relative to: SRC GCC 10VD  
 Offset Depths are relative to Offset Datum Coordinate System is US State Plane 1983, Wyoming Western Zone  
 Central Meridian is -110.083333 ° Grid Convergence at Surface is: 3.46°



<b>Company:</b>	Synergy Resources	<b>Local Co-ordinate Reference:</b>	Well SRC GCC 10VD
<b>Project:</b>	SEC.10-T5N-R66W	<b>TVD Reference:</b>	WELL @ 4871.0ft (Original Well Elev)
<b>Reference Site:</b>	SRC Aims/GCC Pad Sec.10-T5N-R66W	<b>MD Reference:</b>	WELL @ 4871.0ft (Original Well Elev)
<b>Site Error:</b>	0.0ft	<b>North Reference:</b>	True
<b>Reference Well:</b>	SRC GCC 10VD	<b>Survey Calculation Method:</b>	Minimum Curvature
<b>Well Error:</b>	0.0ft	<b>Output errors are at</b>	2.00 sigma
<b>Reference Wellbore</b>	Wellbore #1	<b>Database:</b>	Landmark
<b>Reference Design:</b>	Plan #2 (9-21-11)	<b>Offset TVD Reference:</b>	Offset Datum

Reference Depths are relative to WELL @ 4871.0ft (Original Well Elev) Coordinates are relative to: SRC GCC 10VD  
Offset Depths are relative to Offset Datum Coordinate System is US State Plane 1983, Wyoming Western Zone  
Central Meridian is -110.083333 ° Grid Convergence at Surface is: 3.46°

