

# ENSIGN

## Directional

### Well Name: SRC Aims 24-10D

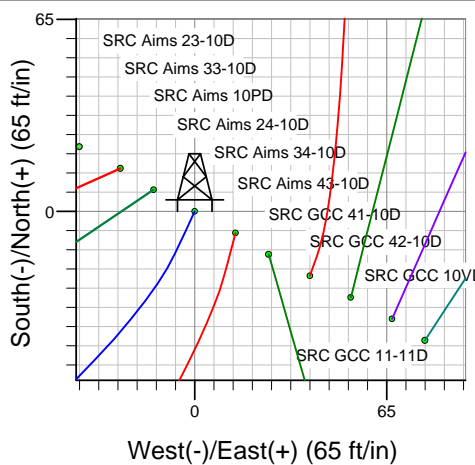
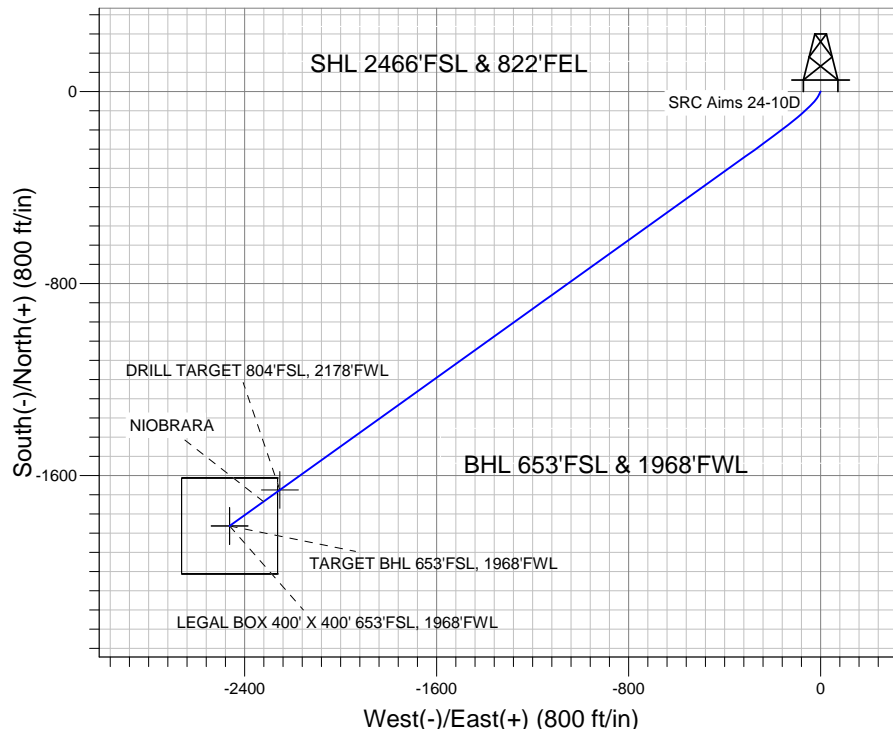
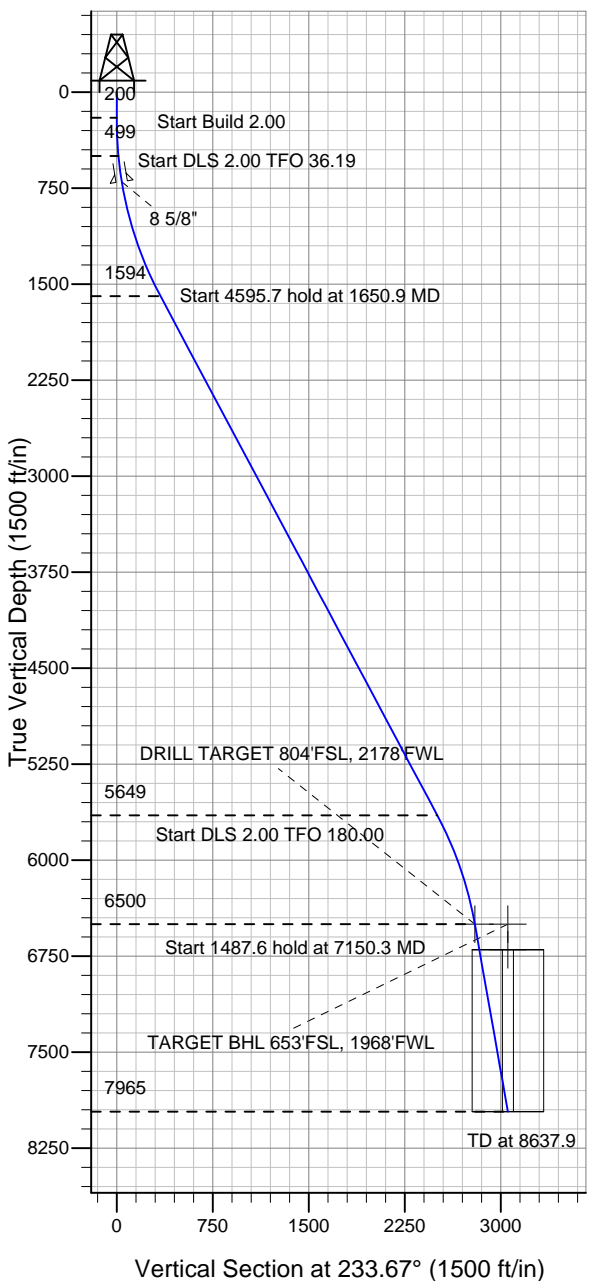
Surface Location: SRC Aims/GCC Pad Sec.10-T5N-R66W  
 North American Datum 1983 US State Plane 1983 Wyoming Western Zone

Ground Elevation: 4858.0

+N/-S	+E/-W	Northing	Easting	Latitude	Longitude	Slot
0.0	0.0	341364.58	4107491.05	40.413660	-104.759239	

Original Well Elev WELL @ 4871.0ft (Original Well Elev)

### Synergy Resources



SRC Aims/GCC Pad Sec.10-T5N-R66W  
 SRC Aims 24-10D  
 Plan #2 (9-21-11)  
 12:44, October 05 2011



Azimuths to True North  
 Magnetic North: 8.82°

Magnetic Field  
 Strength: 53106.6nT  
 Dip Angle: 67.05°  
 Date: 10/5/2011  
 Model: IGRF2010

### WELLBORE TARGET DETAILS (LAT/LONG)

Name	TVD	+N/-S	+E/-W	Latitude	Longitude	Shape
DRILL TARGET 804'FSL, 2178'FWL	6500.0	-1659.9	-2252.2	40.409104	-104.767327	Point
TARGET BHL 653'FSL, 1968'FWL	6500.0	-1810.6	-2462.0	40.408690	-104.768080	Point
LEGAL BOX 400' X 400' 653'FSL, 1968'FWL	6700.0	-1810.6	-2462.0	40.408690	-104.768080	Rectangle (Sides: L400.0 W400.0)

### SECTION DETAILS

Sec	MD	Inc	Azi	TVD	+N/-S	+E/-W	DLeg	TFace	VSec	Target
1	0.0	0.00	0.00	0.0	0.0	0.0	0.00	0.00	0.0	
2	200.0	0.00	0.00	200.0	0.0	0.0	0.00	0.00	0.0	
3	500.0	6.00	205.00	499.5	-14.2	-6.6	2.00	205.00	13.8	
4	1650.9	28.07	234.38	1594.3	-229.4	-255.5	2.00	36.19	341.7	
5	6246.6	28.07	234.38	5649.3	-1488.9	-2013.6	0.00	0.00	2504.3	
6	7150.3	10.00	234.38	6500.0	-1659.9	-2252.2	2.00	180.00	2797.8	DRILL TARGET 804'FSL, 2178'FWL
7	8637.9	10.00	234.38	7965.0	-1810.3	-2462.2	0.00	0.00	3056.1	



## **Directional**

### **Synergy Resources**

**SEC.10-T5N-R66W**

**SRC Aims/GCC Pad Sec.10-T5N-R66W**

**SRC Aims 24-10D**

**Wellbore #1**

**Plan: Plan #2 (9-21-11)**

### **Standard Planning Report**

**05 October, 2011**

Plan Sections										
Measured Depth (ft)	Inclination (°)	Azimuth (°)	Vertical Depth (ft)	+N/-S (ft)	+E/-W (ft)	Dogleg Rate (°/100ft)	Build Rate (°/100ft)	Turn Rate (°/100ft)	TFO (°)	Target
0.0	0.00	0.00	0.0	0.0	0.0	0.00	0.00	0.00	0.00	
200.0	0.00	0.00	200.0	0.0	0.0	0.00	0.00	0.00	0.00	
500.0	6.00	205.00	499.5	-14.2	-6.6	2.00	2.00	0.00	205.00	
1,650.9	28.07	234.38	1,594.3	-229.4	-255.5	2.00	1.92	2.55	36.19	
6,246.6	28.07	234.38	5,649.3	-1,488.9	-2,013.6	0.00	0.00	0.00	0.00	
7,150.3	10.00	234.38	6,500.0	-1,659.9	-2,252.2	2.00	-2.00	0.00	180.00	DRILL TARGET 80.
8,637.9	10.00	234.38	7,965.0	-1,810.3	-2,462.2	0.00	0.00	0.00	0.00	

<b>Database:</b>	Landmark	<b>Local Co-ordinate Reference:</b>	Well SRC Aims 24-10D
<b>Company:</b>	Synergy Resources	<b>TVD Reference:</b>	WELL @ 4871.0ft (Original Well Elev)
<b>Project:</b>	SEC.10-T5N-R66W	<b>MD Reference:</b>	WELL @ 4871.0ft (Original Well Elev)
<b>Site:</b>	SRC Aims/GCC Pad Sec.10-T5N-R66W	<b>North Reference:</b>	True
<b>Well:</b>	SRC Aims 24-10D	<b>Survey Calculation Method:</b>	Minimum Curvature
<b>Wellbore:</b>	Wellbore #1		
<b>Design:</b>	Plan #2 (9-21-11)		

Planned Survey									
Measured Depth (ft)	Inclination (°)	Azimuth (°)	Vertical Depth (ft)	+N/-S (ft)	+E/-W (ft)	Vertical Section (ft)	Dogleg Rate (°/100ft)	Build Rate (°/100ft)	Turn Rate (°/100ft)
0.0	0.00	0.00	0.0	0.0	0.0	0.0	0.00	0.00	0.00
40.0	0.00	0.00	40.0	0.0	0.0	0.0	0.00	0.00	0.00
80.0	0.00	0.00	80.0	0.0	0.0	0.0	0.00	0.00	0.00
120.0	0.00	0.00	120.0	0.0	0.0	0.0	0.00	0.00	0.00
160.0	0.00	0.00	160.0	0.0	0.0	0.0	0.00	0.00	0.00
200.0	0.00	0.00	200.0	0.0	0.0	0.0	0.00	0.00	0.00
240.0	0.80	205.00	240.0	-0.3	-0.1	0.2	2.00	2.00	0.00
280.0	1.60	205.00	280.0	-1.0	-0.5	1.0	2.00	2.00	0.00
320.0	2.40	205.00	320.0	-2.3	-1.1	2.2	2.00	2.00	0.00
360.0	3.20	205.00	359.9	-4.0	-1.9	3.9	2.00	2.00	0.00
400.0	4.00	205.00	399.8	-6.3	-2.9	6.1	2.00	2.00	0.00
440.0	4.80	205.00	439.7	-9.1	-4.2	8.8	2.00	2.00	0.00
480.0	5.60	205.00	479.6	-12.4	-5.8	12.0	2.00	2.00	0.00
500.0	6.00	205.00	499.5	-14.2	-6.6	13.8	2.00	2.00	0.00
520.0	6.33	207.14	519.3	-16.2	-7.6	15.7	2.00	1.64	10.72
560.0	7.00	210.82	559.1	-20.2	-9.8	19.9	2.00	1.69	9.19
600.0	7.70	213.84	598.7	-24.5	-12.6	24.7	2.00	1.75	7.55
640.0	8.42	216.36	638.3	-29.1	-15.8	30.0	2.00	1.80	6.29
680.0	9.15	218.47	677.9	-34.0	-19.5	35.8	2.00	1.83	5.30
702.4	9.57	219.52	700.0	-36.8	-21.8	39.4	2.00	1.85	4.67
8 5/8"									
720.0	9.90	220.28	717.3	-39.1	-23.7	42.3	2.00	1.86	4.32
760.0	10.65	221.84	756.7	-44.5	-28.4	49.2	2.00	1.88	3.89
800.0	11.40	223.19	795.9	-50.1	-33.6	56.7	2.00	1.89	3.38
840.0	12.17	224.37	835.1	-56.0	-39.2	64.8	2.00	1.91	2.96
880.0	12.93	225.42	874.1	-62.1	-45.4	73.4	2.00	1.92	2.62
920.0	13.70	226.35	913.1	-68.6	-52.0	82.5	2.00	1.93	2.33
960.0	14.48	227.18	951.9	-75.2	-59.1	92.2	2.00	1.93	2.08
1,000.0	15.26	227.93	990.5	-82.2	-66.7	102.4	2.00	1.94	1.88
1,040.0	16.03	228.61	1,029.0	-89.3	-74.7	113.1	2.00	1.95	1.70
1,080.0	16.81	229.23	1,067.4	-96.8	-83.2	124.4	2.00	1.95	1.54
1,120.0	17.60	229.79	1,105.6	-104.4	-92.2	136.2	2.00	1.96	1.41
1,160.0	18.38	230.31	1,143.7	-112.4	-101.7	148.5	2.00	1.96	1.29
1,200.0	19.17	230.79	1,181.5	-120.6	-111.7	161.4	2.00	1.96	1.19
1,240.0	19.95	231.23	1,219.2	-129.0	-122.1	174.7	2.00	1.97	1.10
1,280.0	20.74	231.64	1,256.7	-137.6	-132.9	188.6	2.00	1.97	1.02
1,320.0	21.53	232.02	1,294.0	-146.6	-144.3	203.1	2.00	1.97	0.95
1,360.0	22.32	232.37	1,331.1	-155.7	-156.1	218.0	2.00	1.97	0.89
1,400.0	23.11	232.70	1,368.0	-165.1	-168.3	233.4	2.00	1.97	0.83
1,440.0	23.90	233.01	1,404.7	-174.7	-181.0	249.4	2.00	1.98	0.78
1,480.0	24.69	233.31	1,441.2	-184.6	-194.2	265.8	2.00	1.98	0.73
1,520.0	25.48	233.58	1,477.4	-194.7	-207.8	282.8	2.00	1.98	0.69
1,560.0	26.27	233.84	1,513.4	-205.0	-221.9	300.2	2.00	1.98	0.65
1,600.0	27.06	234.09	1,549.1	-215.6	-236.4	318.2	2.00	1.98	0.61
1,640.0	27.86	234.32	1,584.6	-226.4	-251.4	336.6	2.00	1.98	0.58
1,650.9	28.07	234.38	1,594.3	-229.4	-255.5	341.7	2.00	1.98	0.56
1,680.0	28.07	234.38	1,619.9	-237.3	-266.7	355.4	0.00	0.00	0.00
1,720.0	28.07	234.38	1,655.2	-248.3	-282.0	374.3	0.00	0.00	0.00
1,760.0	28.07	234.38	1,690.5	-259.3	-297.3	393.1	0.00	0.00	0.00
1,800.0	28.07	234.38	1,725.8	-270.2	-312.6	411.9	0.00	0.00	0.00
1,840.0	28.07	234.38	1,761.1	-281.2	-327.9	430.7	0.00	0.00	0.00
1,880.0	28.07	234.38	1,796.4	-292.1	-343.2	449.6	0.00	0.00	0.00
1,920.0	28.07	234.38	1,831.7	-303.1	-358.5	468.4	0.00	0.00	0.00
1,960.0	28.07	234.38	1,867.0	-314.1	-373.8	487.2	0.00	0.00	0.00

<b>Database:</b>	Landmark	<b>Local Co-ordinate Reference:</b>	Well SRC Aims 24-10D
<b>Company:</b>	Synergy Resources	<b>TVD Reference:</b>	WELL @ 4871.0ft (Original Well Elev)
<b>Project:</b>	SEC.10-T5N-R66W	<b>MD Reference:</b>	WELL @ 4871.0ft (Original Well Elev)
<b>Site:</b>	SRC Aims/GCC Pad Sec.10-T5N-R66W	<b>North Reference:</b>	True
<b>Well:</b>	SRC Aims 24-10D	<b>Survey Calculation Method:</b>	Minimum Curvature
<b>Wellbore:</b>	Wellbore #1		
<b>Design:</b>	Plan #2 (9-21-11)		

Planned Survey										
Measured Depth (ft)	Inclination (°)	Azimuth (°)	Vertical Depth (ft)	+N/-S (ft)	+E/-W (ft)	Vertical Section (ft)	Dogleg Rate (°/100ft)	Build Rate (°/100ft)	Turn Rate (°/100ft)	
2,000.0	28.07	234.38	1,902.3	-325.0	-389.1	506.0	0.00	0.00	0.00	
2,040.0	28.07	234.38	1,937.6	-336.0	-404.4	524.8	0.00	0.00	0.00	
2,080.0	28.07	234.38	1,972.9	-347.0	-419.7	543.7	0.00	0.00	0.00	
2,120.0	28.07	234.38	2,008.2	-357.9	-435.0	562.5	0.00	0.00	0.00	
2,160.0	28.07	234.38	2,043.5	-368.9	-450.3	581.3	0.00	0.00	0.00	
2,200.0	28.07	234.38	2,078.8	-379.9	-465.6	600.1	0.00	0.00	0.00	
2,240.0	28.07	234.38	2,114.1	-390.8	-480.9	618.9	0.00	0.00	0.00	
2,280.0	28.07	234.38	2,149.4	-401.8	-496.2	637.8	0.00	0.00	0.00	
2,320.0	28.07	234.38	2,184.6	-412.7	-511.5	656.6	0.00	0.00	0.00	
2,360.0	28.07	234.38	2,219.9	-423.7	-526.8	675.4	0.00	0.00	0.00	
2,400.0	28.07	234.38	2,255.2	-434.7	-542.1	694.2	0.00	0.00	0.00	
2,440.0	28.07	234.38	2,290.5	-445.6	-557.4	713.1	0.00	0.00	0.00	
2,480.0	28.07	234.38	2,325.8	-456.6	-572.7	731.9	0.00	0.00	0.00	
2,520.0	28.07	234.38	2,361.1	-467.6	-588.0	750.7	0.00	0.00	0.00	
2,560.0	28.07	234.38	2,396.4	-478.5	-603.3	769.5	0.00	0.00	0.00	
2,600.0	28.07	234.38	2,431.7	-489.5	-618.6	788.3	0.00	0.00	0.00	
2,640.0	28.07	234.38	2,467.0	-500.4	-633.9	807.2	0.00	0.00	0.00	
2,680.0	28.07	234.38	2,502.3	-511.4	-649.2	826.0	0.00	0.00	0.00	
2,720.0	28.07	234.38	2,537.6	-522.4	-664.5	844.8	0.00	0.00	0.00	
2,760.0	28.07	234.38	2,572.9	-533.3	-679.8	863.6	0.00	0.00	0.00	
2,800.0	28.07	234.38	2,608.2	-544.3	-695.1	882.5	0.00	0.00	0.00	
2,840.0	28.07	234.38	2,643.5	-555.3	-710.4	901.3	0.00	0.00	0.00	
2,880.0	28.07	234.38	2,678.8	-566.2	-725.7	920.1	0.00	0.00	0.00	
2,920.0	28.07	234.38	2,714.1	-577.2	-741.0	938.9	0.00	0.00	0.00	
2,960.0	28.07	234.38	2,749.4	-588.2	-756.3	957.7	0.00	0.00	0.00	
3,000.0	28.07	234.38	2,784.6	-599.1	-771.6	976.6	0.00	0.00	0.00	
3,040.0	28.07	234.38	2,819.9	-610.1	-786.9	995.4	0.00	0.00	0.00	
3,080.0	28.07	234.38	2,855.2	-621.0	-802.2	1,014.2	0.00	0.00	0.00	
3,120.0	28.07	234.38	2,890.5	-632.0	-817.5	1,033.0	0.00	0.00	0.00	
3,160.0	28.07	234.38	2,925.8	-643.0	-832.8	1,051.9	0.00	0.00	0.00	
3,200.0	28.07	234.38	2,961.1	-653.9	-848.1	1,070.7	0.00	0.00	0.00	
3,240.0	28.07	234.38	2,996.4	-664.9	-863.4	1,089.5	0.00	0.00	0.00	
3,280.0	28.07	234.38	3,031.7	-675.9	-878.7	1,108.3	0.00	0.00	0.00	
3,320.0	28.07	234.38	3,067.0	-686.8	-894.0	1,127.1	0.00	0.00	0.00	
3,360.0	28.07	234.38	3,102.3	-697.8	-909.3	1,146.0	0.00	0.00	0.00	
3,400.0	28.07	234.38	3,137.6	-708.7	-924.6	1,164.8	0.00	0.00	0.00	
3,440.0	28.07	234.38	3,172.9	-719.7	-939.9	1,183.6	0.00	0.00	0.00	
3,480.0	28.07	234.38	3,208.2	-730.7	-955.2	1,202.4	0.00	0.00	0.00	
3,520.0	28.07	234.38	3,243.5	-741.6	-970.5	1,221.3	0.00	0.00	0.00	
3,560.0	28.07	234.38	3,278.8	-752.6	-985.8	1,240.1	0.00	0.00	0.00	
3,600.0	28.07	234.38	3,314.1	-763.6	-1,001.1	1,258.9	0.00	0.00	0.00	
3,640.0	28.07	234.38	3,349.4	-774.5	-1,016.4	1,277.7	0.00	0.00	0.00	
3,680.0	28.07	234.38	3,384.6	-785.5	-1,031.7	1,296.5	0.00	0.00	0.00	
3,720.0	28.07	234.38	3,419.9	-796.5	-1,047.0	1,315.4	0.00	0.00	0.00	
3,760.0	28.07	234.38	3,455.2	-807.4	-1,062.3	1,334.2	0.00	0.00	0.00	
3,800.0	28.07	234.38	3,490.5	-818.4	-1,077.6	1,353.0	0.00	0.00	0.00	
3,840.0	28.07	234.38	3,525.8	-829.3	-1,092.9	1,371.8	0.00	0.00	0.00	
3,880.0	28.07	234.38	3,561.1	-840.3	-1,108.2	1,390.7	0.00	0.00	0.00	
3,920.0	28.07	234.38	3,596.4	-851.3	-1,123.6	1,409.5	0.00	0.00	0.00	
3,960.0	28.07	234.38	3,631.7	-862.2	-1,138.9	1,428.3	0.00	0.00	0.00	
4,000.0	28.07	234.38	3,667.0	-873.2	-1,154.2	1,447.1	0.00	0.00	0.00	
4,040.0	28.07	234.38	3,702.3	-884.2	-1,169.5	1,465.9	0.00	0.00	0.00	
4,080.0	28.07	234.38	3,737.6	-895.1	-1,184.8	1,484.8	0.00	0.00	0.00	
4,120.0	28.07	234.38	3,772.9	-906.1	-1,200.1	1,503.6	0.00	0.00	0.00	

<b>Database:</b>	Landmark	<b>Local Co-ordinate Reference:</b>	Well SRC Aims 24-10D
<b>Company:</b>	Synergy Resources	<b>TVD Reference:</b>	WELL @ 4871.0ft (Original Well Elev)
<b>Project:</b>	SEC.10-T5N-R66W	<b>MD Reference:</b>	WELL @ 4871.0ft (Original Well Elev)
<b>Site:</b>	SRC Aims/GCC Pad Sec.10-T5N-R66W	<b>North Reference:</b>	True
<b>Well:</b>	SRC Aims 24-10D	<b>Survey Calculation Method:</b>	Minimum Curvature
<b>Wellbore:</b>	Wellbore #1		
<b>Design:</b>	Plan #2 (9-21-11)		

Planned Survey										
Measured Depth (ft)	Inclination (°)	Azimuth (°)	Vertical Depth (ft)	+N/-S (ft)	+E/-W (ft)	Vertical Section (ft)	Dogleg Rate (°/100ft)	Build Rate (°/100ft)	Turn Rate (°/100ft)	
4,160.0	28.07	234.38	3,808.2	-917.0	-1,215.4	1,522.4	0.00	0.00	0.00	
4,200.0	28.07	234.38	3,843.5	-928.0	-1,230.7	1,541.2	0.00	0.00	0.00	
4,240.0	28.07	234.38	3,878.8	-939.0	-1,246.0	1,560.1	0.00	0.00	0.00	
4,280.0	28.07	234.38	3,914.1	-949.9	-1,261.3	1,578.9	0.00	0.00	0.00	
4,320.0	28.07	234.38	3,949.4	-960.9	-1,276.6	1,597.7	0.00	0.00	0.00	
4,360.0	28.07	234.38	3,984.6	-971.9	-1,291.9	1,616.5	0.00	0.00	0.00	
4,400.0	28.07	234.38	4,019.9	-982.8	-1,307.2	1,635.3	0.00	0.00	0.00	
4,440.0	28.07	234.38	4,055.2	-993.8	-1,322.5	1,654.2	0.00	0.00	0.00	
4,480.0	28.07	234.38	4,090.5	-1,004.8	-1,337.8	1,673.0	0.00	0.00	0.00	
4,520.0	28.07	234.38	4,125.8	-1,015.7	-1,353.1	1,691.8	0.00	0.00	0.00	
4,560.0	28.07	234.38	4,161.1	-1,026.7	-1,368.4	1,710.6	0.00	0.00	0.00	
4,600.0	28.07	234.38	4,196.4	-1,037.6	-1,383.7	1,729.4	0.00	0.00	0.00	
4,640.0	28.07	234.38	4,231.7	-1,048.6	-1,399.0	1,748.3	0.00	0.00	0.00	
4,680.0	28.07	234.38	4,267.0	-1,059.6	-1,414.3	1,767.1	0.00	0.00	0.00	
4,720.0	28.07	234.38	4,302.3	-1,070.5	-1,429.6	1,785.9	0.00	0.00	0.00	
4,760.0	28.07	234.38	4,337.6	-1,081.5	-1,444.9	1,804.7	0.00	0.00	0.00	
4,800.0	28.07	234.38	4,372.9	-1,092.5	-1,460.2	1,823.6	0.00	0.00	0.00	
4,840.0	28.07	234.38	4,408.2	-1,103.4	-1,475.5	1,842.4	0.00	0.00	0.00	
4,880.0	28.07	234.38	4,443.5	-1,114.4	-1,490.8	1,861.2	0.00	0.00	0.00	
4,920.0	28.07	234.38	4,478.8	-1,125.3	-1,506.1	1,880.0	0.00	0.00	0.00	
4,960.0	28.07	234.38	4,514.1	-1,136.3	-1,521.4	1,898.8	0.00	0.00	0.00	
5,000.0	28.07	234.38	4,549.4	-1,147.3	-1,536.7	1,917.7	0.00	0.00	0.00	
5,040.0	28.07	234.38	4,584.6	-1,158.2	-1,552.0	1,936.5	0.00	0.00	0.00	
5,080.0	28.07	234.38	4,619.9	-1,169.2	-1,567.3	1,955.3	0.00	0.00	0.00	
5,120.0	28.07	234.38	4,655.2	-1,180.2	-1,582.6	1,974.1	0.00	0.00	0.00	
5,160.0	28.07	234.38	4,690.5	-1,191.1	-1,597.9	1,993.0	0.00	0.00	0.00	
5,200.0	28.07	234.38	4,725.8	-1,202.1	-1,613.2	2,011.8	0.00	0.00	0.00	
5,240.0	28.07	234.38	4,761.1	-1,213.1	-1,628.5	2,030.6	0.00	0.00	0.00	
5,280.0	28.07	234.38	4,796.4	-1,224.0	-1,643.8	2,049.4	0.00	0.00	0.00	
5,320.0	28.07	234.38	4,831.7	-1,235.0	-1,659.1	2,068.2	0.00	0.00	0.00	
5,360.0	28.07	234.38	4,867.0	-1,245.9	-1,674.4	2,087.1	0.00	0.00	0.00	
5,400.0	28.07	234.38	4,902.3	-1,256.9	-1,689.7	2,105.9	0.00	0.00	0.00	
5,440.0	28.07	234.38	4,937.6	-1,267.9	-1,705.0	2,124.7	0.00	0.00	0.00	
5,480.0	28.07	234.38	4,972.9	-1,278.8	-1,720.3	2,143.5	0.00	0.00	0.00	
5,520.0	28.07	234.38	5,008.2	-1,289.8	-1,735.6	2,162.4	0.00	0.00	0.00	
5,560.0	28.07	234.38	5,043.5	-1,300.8	-1,750.9	2,181.2	0.00	0.00	0.00	
5,600.0	28.07	234.38	5,078.8	-1,311.7	-1,766.2	2,200.0	0.00	0.00	0.00	
5,640.0	28.07	234.38	5,114.1	-1,322.7	-1,781.5	2,218.8	0.00	0.00	0.00	
5,680.0	28.07	234.38	5,149.4	-1,333.6	-1,796.8	2,237.6	0.00	0.00	0.00	
5,720.0	28.07	234.38	5,184.6	-1,344.6	-1,812.1	2,256.5	0.00	0.00	0.00	
5,760.0	28.07	234.38	5,219.9	-1,355.6	-1,827.4	2,275.3	0.00	0.00	0.00	
5,800.0	28.07	234.38	5,255.2	-1,366.5	-1,842.7	2,294.1	0.00	0.00	0.00	
5,840.0	28.07	234.38	5,290.5	-1,377.5	-1,858.0	2,312.9	0.00	0.00	0.00	
5,880.0	28.07	234.38	5,325.8	-1,388.5	-1,873.3	2,331.8	0.00	0.00	0.00	
5,920.0	28.07	234.38	5,361.1	-1,399.4	-1,888.6	2,350.6	0.00	0.00	0.00	
5,960.0	28.07	234.38	5,396.4	-1,410.4	-1,903.9	2,369.4	0.00	0.00	0.00	
6,000.0	28.07	234.38	5,431.7	-1,421.4	-1,919.2	2,388.2	0.00	0.00	0.00	
6,040.0	28.07	234.38	5,467.0	-1,432.3	-1,934.5	2,407.0	0.00	0.00	0.00	
6,080.0	28.07	234.38	5,502.3	-1,443.3	-1,949.8	2,425.9	0.00	0.00	0.00	
6,120.0	28.07	234.38	5,537.6	-1,454.2	-1,965.1	2,444.7	0.00	0.00	0.00	
6,160.0	28.07	234.38	5,572.9	-1,465.2	-1,980.4	2,463.5	0.00	0.00	0.00	
6,200.0	28.07	234.38	5,608.2	-1,476.2	-1,995.7	2,482.3	0.00	0.00	0.00	
6,240.0	28.07	234.38	5,643.5	-1,487.1	-2,011.0	2,501.2	0.00	0.00	0.00	
6,246.6	28.07	234.38	5,649.3	-1,488.9	-2,013.6	2,504.3	0.00	0.00	0.00	

<b>Database:</b>	Landmark	<b>Local Co-ordinate Reference:</b>	Well SRC Aims 24-10D
<b>Company:</b>	Synergy Resources	<b>TVD Reference:</b>	WELL @ 4871.0ft (Original Well Elev)
<b>Project:</b>	SEC.10-T5N-R66W	<b>MD Reference:</b>	WELL @ 4871.0ft (Original Well Elev)
<b>Site:</b>	SRC Aims/GCC Pad Sec.10-T5N-R66W	<b>North Reference:</b>	True
<b>Well:</b>	SRC Aims 24-10D	<b>Survey Calculation Method:</b>	Minimum Curvature
<b>Wellbore:</b>	Wellbore #1		
<b>Design:</b>	Plan #2 (9-21-11)		

Planned Survey									
Measured Depth (ft)	Inclination (°)	Azimuth (°)	Vertical Depth (ft)	+N/-S (ft)	+E/-W (ft)	Vertical Section (ft)	Dogleg Rate (°/100ft)	Build Rate (°/100ft)	Turn Rate (°/100ft)
6,280.0	27.41	234.38	5,678.9	-1,498.0	-2,026.2	2,519.8	2.00	-2.00	0.00
6,320.0	26.61	234.38	5,714.5	-1,508.6	-2,041.0	2,538.0	2.00	-2.00	0.00
6,360.0	25.81	234.38	5,750.4	-1,518.9	-2,055.3	2,555.6	2.00	-2.00	0.00
6,400.0	25.01	234.38	5,786.5	-1,528.9	-2,069.3	2,572.8	2.00	-2.00	0.00
6,440.0	24.21	234.38	5,822.9	-1,538.6	-2,082.8	2,589.4	2.00	-2.00	0.00
6,480.0	23.41	234.38	5,859.5	-1,548.0	-2,095.9	2,605.6	2.00	-2.00	0.00
6,520.0	22.61	234.38	5,896.3	-1,557.1	-2,108.6	2,621.2	2.00	-2.00	0.00
6,560.0	21.81	234.38	5,933.3	-1,565.9	-2,120.9	2,636.3	2.00	-2.00	0.00
6,600.0	21.01	234.38	5,970.6	-1,574.4	-2,132.8	2,650.9	2.00	-2.00	0.00
6,640.0	20.21	234.38	6,008.0	-1,582.6	-2,144.2	2,665.0	2.00	-2.00	0.00
6,680.0	19.41	234.38	6,045.6	-1,590.5	-2,155.3	2,678.6	2.00	-2.00	0.00
6,720.0	18.61	234.38	6,083.5	-1,598.0	-2,165.8	2,691.6	2.00	-2.00	0.00
6,760.0	17.81	234.38	6,121.5	-1,605.3	-2,176.0	2,704.1	2.00	-2.00	0.00
6,800.0	17.01	234.38	6,159.6	-1,612.3	-2,185.7	2,716.0	2.00	-2.00	0.00
6,840.0	16.21	234.38	6,198.0	-1,618.9	-2,195.0	2,727.5	2.00	-2.00	0.00
6,880.0	15.41	234.38	6,236.5	-1,625.3	-2,203.9	2,738.4	2.00	-2.00	0.00
6,920.0	14.61	234.38	6,275.1	-1,631.3	-2,212.3	2,748.7	2.00	-2.00	0.00
6,960.0	13.81	234.38	6,313.9	-1,637.0	-2,220.3	2,758.5	2.00	-2.00	0.00
7,000.0	13.01	234.38	6,352.8	-1,642.4	-2,227.8	2,767.8	2.00	-2.00	0.00
7,040.0	12.21	234.38	6,391.8	-1,647.5	-2,234.9	2,776.5	2.00	-2.00	0.00
7,080.0	11.41	234.38	6,431.0	-1,652.3	-2,241.6	2,784.7	2.00	-2.00	0.00
7,120.0	10.61	234.38	6,470.2	-1,656.7	-2,247.8	2,792.4	2.00	-2.00	0.00
7,150.3	10.00	234.38	6,500.0	-1,659.9	-2,252.2	2,797.8	2.00	-2.00	0.00
<b>DRILL TARGET 804'FSL, 2178'FWL</b>									
7,160.0	10.00	234.38	6,509.6	-1,660.9	-2,253.5	2,799.5	0.00	0.00	0.00
7,195.1	10.00	234.38	6,544.2	-1,664.4	-2,258.5	2,805.6	0.00	0.00	0.00
<b>TARGET BHL 653'FSL, 1968'FWL</b>									
7,200.0	10.00	234.38	6,549.0	-1,664.9	-2,259.2	2,806.4	0.00	0.00	0.00
7,240.0	10.00	234.38	6,588.4	-1,669.0	-2,264.8	2,813.3	0.00	0.00	0.00
7,280.0	10.00	234.38	6,627.8	-1,673.0	-2,270.5	2,820.3	0.00	0.00	0.00
7,320.0	10.00	234.38	6,667.2	-1,677.1	-2,276.1	2,827.2	0.00	0.00	0.00
7,360.0	10.00	234.38	6,706.6	-1,681.1	-2,281.8	2,834.2	0.00	0.00	0.00
7,392.1	10.00	234.38	6,738.1	-1,684.3	-2,286.3	2,839.8	0.00	0.00	0.00
<b>LEGAL BOX 400' X 400' 653'FSL, 1968'FWL</b>									
7,400.0	10.00	234.38	6,745.9	-1,685.2	-2,287.4	2,841.1	0.00	0.00	0.00
7,440.0	10.00	234.38	6,785.3	-1,689.2	-2,293.1	2,848.1	0.00	0.00	0.00
7,480.0	10.00	234.38	6,824.7	-1,693.2	-2,298.7	2,855.0	0.00	0.00	0.00
7,520.0	10.00	234.38	6,864.1	-1,697.3	-2,304.4	2,862.0	0.00	0.00	0.00
7,560.0	10.00	234.38	6,903.5	-1,701.3	-2,310.0	2,868.9	0.00	0.00	0.00
7,600.0	10.00	234.38	6,942.9	-1,705.4	-2,315.6	2,875.9	0.00	0.00	0.00
7,632.6	10.00	234.38	6,975.0	-1,708.7	-2,320.2	2,881.5	0.00	0.00	0.00
<b>NIOBRARA</b>									
7,640.0	10.00	234.38	6,982.3	-1,709.4	-2,321.3	2,882.8	0.00	0.00	0.00
7,680.0	10.00	234.38	7,021.7	-1,713.5	-2,326.9	2,889.7	0.00	0.00	0.00
7,720.0	10.00	234.38	7,061.1	-1,717.5	-2,332.6	2,896.7	0.00	0.00	0.00
7,760.0	10.00	234.38	7,100.5	-1,721.6	-2,338.2	2,903.6	0.00	0.00	0.00
7,800.0	10.00	234.38	7,139.9	-1,725.6	-2,343.9	2,910.6	0.00	0.00	0.00
7,840.0	10.00	234.38	7,179.3	-1,729.6	-2,349.5	2,917.5	0.00	0.00	0.00
7,880.0	10.00	234.38	7,218.7	-1,733.7	-2,355.2	2,924.5	0.00	0.00	0.00
7,920.0	10.00	234.38	7,258.0	-1,737.7	-2,360.8	2,931.4	0.00	0.00	0.00
7,960.0	10.00	234.38	7,297.4	-1,741.8	-2,366.5	2,938.4	0.00	0.00	0.00
8,000.0	10.00	234.38	7,336.8	-1,745.8	-2,372.1	2,945.3	0.00	0.00	0.00
8,040.0	10.00	234.38	7,376.2	-1,749.9	-2,377.8	2,952.3	0.00	0.00	0.00



<b>Database:</b>	Landmark	<b>Local Co-ordinate Reference:</b>	Well SRC Aims 24-10D
<b>Company:</b>	Synergy Resources	<b>TVD Reference:</b>	WELL @ 4871.0ft (Original Well Elev)
<b>Project:</b>	SEC.10-T5N-R66W	<b>MD Reference:</b>	WELL @ 4871.0ft (Original Well Elev)
<b>Site:</b>	SRC Aims/GCC Pad Sec.10-T5N-R66W	<b>North Reference:</b>	True
<b>Well:</b>	SRC Aims 24-10D	<b>Survey Calculation Method:</b>	Minimum Curvature
<b>Wellbore:</b>	Wellbore #1		
<b>Design:</b>	Plan #2 (9-21-11)		

Planned Survey										
Measured Depth (ft)	Inclination (°)	Azimuth (°)	Vertical Depth (ft)	+N/-S (ft)	+E/-W (ft)	Vertical Section (ft)	Dogleg Rate (°/100ft)	Build Rate (°/100ft)	Turn Rate (°/100ft)	
8,080.0	10.00	234.38	7,415.6	-1,753.9	-2,383.4	2,959.2	0.00	0.00	0.00	
8,120.0	10.00	234.38	7,455.0	-1,758.0	-2,389.1	2,966.1	0.00	0.00	0.00	
8,160.0	10.00	234.38	7,494.4	-1,762.0	-2,394.7	2,973.1	0.00	0.00	0.00	
8,200.0	10.00	234.38	7,533.8	-1,766.1	-2,400.3	2,980.0	0.00	0.00	0.00	
8,240.0	10.00	234.38	7,573.2	-1,770.1	-2,406.0	2,987.0	0.00	0.00	0.00	
8,280.0	10.00	234.38	7,612.6	-1,774.1	-2,411.6	2,993.9	0.00	0.00	0.00	
8,320.0	10.00	234.38	7,652.0	-1,778.2	-2,417.3	3,000.9	0.00	0.00	0.00	
8,360.0	10.00	234.38	7,691.4	-1,782.2	-2,422.9	3,007.8	0.00	0.00	0.00	
8,400.0	10.00	234.38	7,730.8	-1,786.3	-2,428.6	3,014.8	0.00	0.00	0.00	
8,440.0	10.00	234.38	7,770.1	-1,790.3	-2,434.2	3,021.7	0.00	0.00	0.00	
8,480.0	10.00	234.38	7,809.5	-1,794.4	-2,439.9	3,028.7	0.00	0.00	0.00	
8,520.0	10.00	234.38	7,848.9	-1,798.4	-2,445.5	3,035.6	0.00	0.00	0.00	
8,560.0	10.00	234.38	7,888.3	-1,802.5	-2,451.2	3,042.5	0.00	0.00	0.00	
8,600.0	10.00	234.38	7,927.7	-1,806.5	-2,456.8	3,049.5	0.00	0.00	0.00	
8,637.9	10.00	234.38	7,965.0	-1,810.3	-2,462.2	3,056.1	0.00	0.00	0.00	

Targets										
Target Name	Dip Angle (°)	Dip Dir. (°)	TVD (ft)	+N/-S (ft)	+E/-W (ft)	Northing (ft)	Easting (ft)	Latitude	Longitude	
DRILL TARGET 804'F - hit/miss target - Shape	0.00	0.00	6,500.0	-1,659.9	-2,252.2	339,567.55	4,105,337.78	40.409104	-104.767327	
LEGAL BOX 400' X 400' - plan hits target center - Point	0.00	0.00	6,700.0	-1,810.6	-2,462.0	339,404.07	4,105,136.95	40.408690	-104.768080	
TARGET BHL 653'FS - plan misses target center by 219.7ft at 7392.1ft MD (6738.1 TVD, -1684.3 N, -2286.3 E) - Rectangle (sides W400.0 H400.0 D1,265.0)	0.00	0.00	6,500.0	-1,810.6	-2,462.0	339,404.08	4,105,136.95	40.408690	-104.768080	

Casing Points					
Measured Depth (ft)	Vertical Depth (ft)	Name	Casing Diameter (")	Hole Diameter (")	
702.4	700.0	8 5/8"	8-5/8	12-1/4	

Formations					
Measured Depth (ft)	Vertical Depth (ft)	Name	Lithology	Dip (°)	Dip Direction (°)
7,632.6	6,975.0	NIOBRARA		0.00	





# **Directional**

## **Synergy Resources**

**SEC.10-T5N-R66W**

**SRC Aims/GCC Pad Sec.10-T5N-R66W**

**SRC Aims 24-10D**

**Wellbore #1**

**Plan #2 (9-21-11)**

## **Anticollision Report**

**05 October, 2011**



Offset Design      SRC Aims/GCC Pad Sec.10-T5N-R66W - SRC Aims 10PD - Wellbore #1 - Plan #2 (9-21-11)													Offset Site Error:      0.0 ft	
Survey Program: 0-MWD													Offset Well Error:      0.0 ft	
Reference		Offset		Semi Major Axis			Distance							
Measured Depth (ft)	Vertical Depth (ft)	Measured Depth (ft)	Vertical Depth (ft)	Reference (ft)	Offset (ft)	Highside Toolface (°)	Offset Wellbore Centre +N/-S (ft)	+E/-W (ft)	Between Centres (ft)	Between Ellipses (ft)	Minimum Separation (ft)	Separation Factor	Warning	
1,900.0	1,814.1	1,912.0	1,847.9	10.1	8.6	141.35	-204.6	-329.2	101.0	87.5	13.55	7.455		
2,000.0	1,902.3	2,011.9	1,938.3	11.0	9.5	142.53	-228.2	-364.4	105.8	91.2	14.62	7.238		
2,100.0	1,990.5	2,111.8	2,028.7	12.0	10.3	143.61	-251.9	-399.7	110.7	95.0	15.68	7.060		
2,200.0	2,078.8	2,211.6	2,119.0	13.0	11.2	144.60	-275.6	-434.9	115.6	98.8	16.71	6.914		
2,300.0	2,167.0	2,311.5	2,209.4	14.0	12.1	145.51	-299.3	-470.1	120.5	102.7	17.74	6.791		
2,400.0	2,255.2	2,411.4	2,299.8	15.0	13.0	146.34	-323.0	-505.4	125.4	106.6	18.75	6.688		
2,500.0	2,343.5	2,511.2	2,390.2	15.9	13.9	147.12	-346.7	-540.6	130.4	110.6	19.75	6.601		
2,600.0	2,431.7	2,611.1	2,480.6	16.9	14.8	147.83	-370.3	-575.9	135.3	114.6	20.74	6.526		
2,700.0	2,519.9	2,710.9	2,571.0	17.9	15.7	148.50	-394.0	-611.1	140.3	118.6	21.72	6.462		
2,800.0	2,608.2	2,810.8	2,661.4	18.9	16.5	149.12	-417.7	-646.3	145.4	122.7	22.69	6.406		
2,900.0	2,696.4	2,910.7	2,751.7	19.9	17.4	149.70	-441.4	-681.6	150.4	126.7	23.65	6.358		
3,000.0	2,784.6	3,010.5	2,842.1	20.9	18.3	150.24	-465.1	-716.8	155.4	130.8	24.61	6.315		
3,100.0	2,872.9	3,110.4	2,932.5	21.9	19.2	150.75	-488.8	-752.1	160.5	134.9	25.56	6.278		
3,200.0	2,961.1	3,210.2	3,022.9	22.9	20.1	151.22	-512.4	-787.3	165.6	139.1	26.51	6.245		
3,300.0	3,049.4	3,310.1	3,113.3	23.9	21.0	151.67	-536.1	-822.6	170.6	143.2	27.45	6.216		
3,400.0	3,137.6	3,410.0	3,203.7	24.9	21.9	152.09	-559.8	-857.8	175.7	147.4	28.39	6.190		
3,500.0	3,225.8	3,509.8	3,294.1	25.9	22.8	152.49	-583.5	-893.0	180.8	151.5	29.32	6.167		
3,600.0	3,314.1	3,609.7	3,384.4	26.8	23.7	152.87	-607.2	-928.3	186.0	155.7	30.25	6.146		
3,700.0	3,402.3	3,709.6	3,474.8	27.8	24.6	153.22	-630.9	-963.5	191.1	159.9	31.18	6.128		
3,800.0	3,490.5	3,809.4	3,565.2	28.8	25.5	153.56	-654.5	-998.8	196.2	164.1	32.11	6.111		
3,900.0	3,578.8	3,909.3	3,655.6	29.8	26.4	153.88	-678.2	-1,034.0	201.3	168.3	33.03	6.096		
4,000.0	3,667.0	4,009.1	3,746.0	30.8	27.3	154.19	-701.9	-1,069.3	206.5	172.5	33.95	6.082		
4,100.0	3,755.2	4,109.0	3,836.4	31.8	28.2	154.48	-725.6	-1,104.5	211.6	176.7	34.86	6.070		
4,200.0	3,843.5	4,208.9	3,926.8	32.8	29.1	154.75	-749.3	-1,139.7	216.8	181.0	35.78	6.059		
4,300.0	3,931.7	4,308.7	4,017.1	33.8	30.0	155.01	-773.0	-1,175.0	221.9	185.2	36.69	6.048		
4,400.0	4,019.9	4,408.6	4,107.5	34.8	30.9	155.27	-796.6	-1,210.2	227.1	189.5	37.60	6.039		
4,500.0	4,108.2	4,508.5	4,197.9	35.8	31.8	155.51	-820.3	-1,245.5	232.2	193.7	38.51	6.030		
4,600.0	4,196.4	4,608.3	4,288.3	36.8	32.6	155.74	-844.0	-1,280.7	237.4	198.0	39.42	6.022		
4,700.0	4,284.6	4,708.2	4,378.7	37.8	33.5	155.95	-867.7	-1,315.9	242.6	202.2	40.32	6.015		
4,800.0	4,372.9	4,808.0	4,469.1	38.8	34.4	156.17	-891.4	-1,351.2	247.7	206.5	41.23	6.009		
4,900.0	4,461.1	4,907.9	4,559.5	39.8	35.3	156.37	-915.1	-1,386.4	252.9	210.8	42.13	6.002		
5,000.0	4,549.4	5,007.8	4,649.8	40.8	36.2	156.56	-938.7	-1,421.7	258.1	215.1	43.04	5.997		
5,100.0	4,637.6	5,107.6	4,740.2	41.8	37.1	156.75	-962.4	-1,456.9	263.3	219.3	43.94	5.992		
5,200.0	4,725.8	5,207.5	4,830.6	42.8	38.0	156.93	-986.1	-1,492.2	268.5	223.6	44.84	5.987 SF		
5,300.0	4,814.1	5,300.0	4,914.4	43.8	38.8	157.11	-1,007.9	-1,524.6	273.9	228.3	45.69	5.996		
5,400.0	4,902.3	5,395.5	5,002.0	44.8	39.4	157.50	-1,029.2	-1,556.2	281.8	235.5	46.30	6.086		
5,500.0	4,990.5	5,486.5	5,086.6	45.8	40.0	158.09	-1,047.9	-1,584.1	292.7	245.9	46.72	6.264		
5,600.0	5,078.8	5,576.7	5,171.5	46.8	40.5	158.84	-1,064.9	-1,609.5	306.4	259.4	46.98	6.522		
5,700.0	5,167.0	5,666.1	5,256.5	47.8	40.9	159.72	-1,080.4	-1,632.4	323.1	276.0	47.11	6.858		
5,800.0	5,255.2	5,754.4	5,341.2	48.8	41.3	160.67	-1,094.1	-1,652.9	342.7	295.6	47.16	7.268		
5,900.0	5,343.5	5,841.5	5,425.6	49.8	41.7	161.67	-1,106.3	-1,671.0	365.3	318.1	47.15	7.748		
6,000.0	5,431.7	5,927.2	5,509.2	50.7	42.0	162.67	-1,116.8	-1,686.7	390.7	343.6	47.11	8.293		
6,100.0	5,519.9	6,011.5	5,591.9	51.7	42.3	163.66	-1,125.9	-1,700.1	419.0	371.9	47.08	8.900		
6,200.0	5,608.2	6,100.0	5,679.2	52.7	42.5	164.67	-1,133.9	-1,712.0	450.1	403.1	47.02	9.572		
6,246.6	5,649.3	6,132.2	5,711.1	53.2	42.6	165.04	-1,136.4	-1,715.8	465.5	418.4	47.05	9.893		
6,300.0	5,696.6	6,175.4	5,754.0	53.7	42.7	165.60	-1,139.5	-1,720.4	483.4	436.4	47.02	10.280		
6,400.0	5,786.5	6,255.9	5,834.0	54.4	42.9	166.54	-1,144.3	-1,727.5	516.6	469.6	46.98	10.995		
6,500.0	5,877.9	6,335.8	5,913.6	55.1	43.0	167.35	-1,147.8	-1,732.8	549.2	502.2	46.96	11.694		
6,600.0	5,970.6	6,415.1	5,992.8	55.7	43.1	168.08	-1,150.1	-1,736.1	581.2	534.3	46.95	12.380		
6,700.0	6,064.5	6,500.0	6,077.7	56.2	43.2	168.75	-1,151.1	-1,737.7	612.7	565.8	46.90	13.062		
6,800.0	6,159.6	6,582.9	6,160.6	56.7	43.2	169.33	-1,151.2	-1,737.8	642.8	596.0	46.85	13.720		
6,900.0	6,255.8	6,679.1	6,256.8	57.2	43.3	169.87	-1,151.2	-1,737.8	670.0	623.2	46.79	14.320		

<b>Company:</b>	Synergy Resources	<b>Local Co-ordinate Reference:</b>	Well SRC Aims 24-10D
<b>Project:</b>	SEC.10-T5N-R66W	<b>TVD Reference:</b>	WELL @ 4871.0ft (Original Well Elev)
<b>Reference Site:</b>	SRC Aims/GCC Pad Sec.10-T5N-R66W	<b>MD Reference:</b>	WELL @ 4871.0ft (Original Well Elev)
<b>Site Error:</b>	0.0ft	<b>North Reference:</b>	True
<b>Reference Well:</b>	SRC Aims 24-10D	<b>Survey Calculation Method:</b>	Minimum Curvature
<b>Well Error:</b>	0.0ft	<b>Output errors are at</b>	2.00 sigma
<b>Reference Wellbore</b>	Wellbore #1	<b>Database:</b>	Landmark
<b>Reference Design:</b>	Plan #2 (9-21-11)	<b>Offset TVD Reference:</b>	Offset Datum

<b>Offset Design</b> SRC Aims/GCC Pad Sec.10-T5N-R66W - SRC Aims 10PD - Wellbore #1 - Plan #2 (9-21-11)												<b>Offset Site Error:</b>	0.0 ft
Survey Program: 0-MWD												<b>Offset Well Error:</b>	0.0 ft
Reference		Offset		Semi Major Axis			Distance						
Measured Depth (ft)	Vertical Depth (ft)	Measured Depth (ft)	Vertical Depth (ft)	Reference (ft)	Offset (ft)	Highside Toolface (°)	Offset Wellbore Centre +N/-S (ft)	+E/-W (ft)	Between Centres (ft)	Between Ellipses (ft)	Minimum Separation (ft)	Separation Factor	Warning
7,000.0	6,352.8	6,776.1	6,353.8	57.6	43.4	170.30	-1,151.2	-1,737.8	693.9	647.1	46.72	14.852	
7,100.0	6,450.6	6,873.9	6,451.6	57.9	43.4	170.65	-1,151.2	-1,737.8	714.4	667.7	46.64	15.318	
7,150.3	6,500.0	6,923.3	6,501.0	58.1	43.4	170.80	-1,151.2	-1,737.8	723.4	676.8	46.59	15.529	
7,200.0	6,549.0	6,972.3	6,550.0	58.2	43.5	170.91	-1,151.2	-1,737.8	732.0	685.3	46.71	15.672	
7,300.0	6,647.5	7,070.8	6,648.5	58.6	43.5	171.12	-1,151.2	-1,737.8	749.1	702.2	46.96	15.951	
7,400.0	6,745.9	7,169.3	6,746.9	59.0	43.6	171.32	-1,151.2	-1,737.8	766.3	719.1	47.23	16.224	
7,500.0	6,844.4	7,267.7	6,845.4	59.4	43.7	171.51	-1,151.2	-1,737.8	783.5	736.0	47.51	16.492	
7,600.0	6,942.9	7,366.2	6,943.9	59.7	43.7	171.69	-1,151.2	-1,737.8	800.6	752.9	47.79	16.754	
7,700.0	7,041.4	7,464.7	7,042.4	60.1	43.8	171.87	-1,151.2	-1,737.8	817.8	769.8	48.08	17.011	
7,800.0	7,139.9	7,563.2	7,140.9	60.5	43.9	172.04	-1,151.2	-1,737.8	835.0	786.7	48.37	17.262	
7,900.0	7,238.3	7,661.7	7,239.3	60.9	44.0	172.20	-1,151.2	-1,737.8	852.2	803.6	48.68	17.509	
8,000.0	7,336.8	7,760.1	7,337.8	61.3	44.0	172.35	-1,151.2	-1,737.8	869.5	820.5	48.98	17.750	
8,100.0	7,435.3	7,858.6	7,436.3	61.6	44.1	172.50	-1,151.2	-1,737.8	886.7	837.4	49.30	17.986	
8,200.0	7,533.8	7,957.1	7,534.8	62.0	44.2	172.65	-1,151.2	-1,737.8	903.9	854.3	49.62	18.218	
8,300.0	7,632.3	8,055.6	7,633.3	62.4	44.2	172.79	-1,151.2	-1,737.8	921.1	871.2	49.94	18.445	
8,400.0	7,730.8	8,154.1	7,731.8	62.8	44.3	172.92	-1,151.2	-1,737.8	938.4	888.1	50.27	18.667	
8,500.0	7,829.2	8,252.5	7,830.2	63.2	44.4	173.05	-1,151.2	-1,737.8	955.6	905.0	50.60	18.885	
8,600.0	7,927.7	8,351.0	7,928.7	63.5	44.5	173.17	-1,151.2	-1,737.8	972.8	921.9	50.94	19.099	
8,637.9	7,965.0	8,387.3	7,965.0	63.6	44.5	173.21	-1,151.2	-1,737.8	979.4	928.3	51.02	19.195	

SRC Aims/GCC Pad Sec.10-T5N-R66W - SRC Aims 34-10D - Wellbore #1 - Plan #2 (9-21-11)													Offset Site Error:	0.0 ft	
Survey Program: 0-MWD														Offset Well Error:	0.0 ft
Reference		Offset		Semi Major Axis			Distance							Warning	
Measured Depth (ft)	Vertical Depth (ft)	Measured Depth (ft)	Vertical Depth (ft)	Reference (ft)	Offset (ft)	Highside Toolface (°)	Offset Wellbore Centre +N/-S (ft)	+E/-W (ft)	Between Centres (ft)	Between Ellipses (ft)	Minimum Separation (ft)	Separation Factor			
0.0	0.0	1.0	1.0	0.0	0.0	117.75	-7.3	13.9	15.7	15.7	0.00	N/A			
100.0	100.0	101.0	101.0	0.1	0.1	117.75	-7.3	13.9	15.7	15.4	0.23	68.987			
200.0	200.0	201.0	201.0	0.3	0.3	117.75	-7.3	13.9	15.7	15.0	0.68	23.148			
265.6	265.6	266.6	266.6	0.5	0.5	-90.00	-7.3	13.9	15.6	14.7	0.96	16.349 CC			
300.0	300.0	301.0	301.0	0.5	0.6	-93.63	-7.3	13.9	15.7	14.6	1.10	14.205 ES			
400.0	399.8	400.8	400.8	0.8	0.8	-111.66	-7.3	13.9	16.8	15.3	1.54	10.952			
500.0	499.5	500.8	500.8	1.0	1.0	-129.52	-9.0	13.4	20.7	18.7	1.97	10.498			
600.0	598.7	601.1	600.9	1.3	1.2	-146.74	-14.1	12.0	26.8	24.3	2.41	11.110			
700.0	697.6	701.1	700.5	1.6	1.4	-153.89	-22.1	9.9	34.6	31.8	2.87	12.051			
800.0	795.9	801.8	800.8	2.0	1.7	-157.41	-32.0	6.5	44.1	40.8	3.38	13.077			
900.0	893.6	902.8	900.8	2.4	1.9	-158.44	-44.8	1.0	54.0	50.1	3.92	13.781			
1,000.0	990.5	1,004.1	1,000.5	2.9	2.3	-158.05	-60.3	-6.7	64.4	59.9	4.53	14.218			
1,100.0	1,086.5	1,105.5	1,099.8	3.5	2.7	-156.82	-78.7	-16.6	75.4	70.1	5.22	14.436			
1,200.0	1,181.5	1,207.1	1,198.4	4.1	3.1	-155.06	-99.8	-28.7	87.0	81.0	6.01	14.473			
1,300.0	1,275.4	1,308.8	1,296.2	4.7	3.7	-153.01	-123.8	-42.9	99.4	92.4	6.91	14.370			
1,400.0	1,368.0	1,410.5	1,393.0	5.5	4.2	-150.79	-150.5	-59.3	112.6	104.7	7.95	14.164			
1,500.0	1,459.3	1,512.4	1,488.8	6.3	4.9	-148.50	-179.9	-77.8	126.8	117.7	9.13	13.891			
1,600.0	1,549.1	1,614.3	1,583.3	7.2	5.6	-146.19	-211.9	-98.3	142.1	131.6	10.46	13.586			
1,650.9	1,594.3	1,666.1	1,630.8	7.7	6.0	-145.03	-229.3	-109.6	150.2	139.0	11.19	13.420			
1,700.0	1,637.6	1,716.2	1,676.4	8.1	6.4	-143.69	-246.7	-121.0	158.0	146.0	11.96	13.205			
1,800.0	1,725.8	1,816.1	1,766.4	9.1	7.2	-140.87	-282.7	-144.8	172.8	159.2	13.63	12.683			
1,900.0	1,814.1	1,914.7	1,855.2	10.1	8.0	-138.47	-318.4	-168.4	187.9	172.6	15.33	12.259			
2,000.0	1,902.3	2,013.2	1,944.0	11.0	8.9	-136.43	-354.1	-192.0	203.3	186.2	17.06	11.919			
2,100.0	1,990.5	2,111.8	2,032.8	12.0	9.7	-134.68	-389.9	-215.7	218.9	200.1	18.80	11.643			
2,200.0	2,078.8	2,210.4	2,121.6	13.0	10.6	-133.16	-425.6	-239.3	234.6	214.1	20.56	11.414			
2,300.0	2,167.0	2,309.0	2,210.3	14.0	11.4	-131.83	-461.3	-262.9	250.5	228.2	22.32	11.224			
2,400.0	2,255.2	2,407.5	2,299.1	15.0	12.3	-130.66	-497.1	-286.5	266.5	242.4	24.09	11.064			
2,500.0	2,343.5	2,506.1	2,387.9	15.9	13.1	-129.63	-532.8	-310.2	282.6	256.8	25.87	10.927			
2,600.0	2,431.7	2,604.7	2,476.7	16.9	14.0	-128.70	-568.5	-333.8	298.8	271.2	27.64	10.810			
2,700.0	2,519.9	2,703.2	2,565.5	17.9	14.8	-127.87	-604.2	-357.4	315.1	285.7	29.43	10.708			
2,800.0	2,608.2	2,801.8	2,654.2	18.9	15.7	-127.12	-640.0	-381.0	331.4	300.2	31.21	10.619			
2,900.0	2,696.4	2,900.4	2,743.0	19.9	16.5	-126.44	-675.7	-404.7	347.8	314.8	32.99	10.541			
3,000.0	2,784.6	2,999.0	2,831.8	20.9	17.4	-125.83	-711.4	-428.3	364.2	329.4	34.78	10.471			
3,100.0	2,872.9	3,097.5	2,920.6	21.9	18.2	-125.26	-747.2	-451.9	380.6	344.1	36.57	10.410			
3,200.0	2,961.1	3,196.1	3,009.4	22.9	19.1	-124.75	-782.9	-475.5	397.1	358.8	38.35	10.354			
3,300.0	3,049.4	3,294.7	3,098.1	23.9	20.0	-124.27	-818.6	-499.1	413.6	373.5	40.14	10.304			
3,400.0	3,137.6	3,393.2	3,186.9	24.9	20.8	-123.83	-854.3	-522.8	430.2	388.2	41.93	10.259			
3,500.0	3,225.8	3,491.8	3,275.7	25.9	21.7	-123.42	-890.1	-546.4	446.7	403.0	43.72	10.218			
3,600.0	3,314.1	3,590.4	3,364.5	26.8	22.5	-123.04	-925.8	-570.0	463.3	417.8	45.50	10.181			
3,700.0	3,402.3	3,689.0	3,453.3	27.8	23.4	-122.69	-961.5	-593.6	479.9	432.6	47.29	10.147			
3,800.0	3,490.5	3,787.5	3,542.0	28.8	24.3	-122.36	-997.2	-617.3	496.5	447.4	49.08	10.116			
3,900.0	3,578.8	3,886.1	3,630.8	29.8	25.1	-122.06	-1,033.0	-640.9	513.1	462.2	50.87	10.087			
4,000.0	3,667.0	3,984.7	3,719.6	30.8	26.0	-121.77	-1,068.7	-664.5	529.8	477.1	52.66	10.060			
4,100.0	3,755.2	4,083.3	3,808.4	31.8	26.9	-121.50	-1,104.4	-688.1	546.4	492.0	54.45	10.035			
4,200.0	3,843.5	4,181.8	3,897.2	32.8	27.7	-121.24	-1,140.2	-711.8	563.1	506.8	56.24	10.012			
4,300.0	3,931.7	4,280.4	3,985.9	33.8	28.6	-121.00	-1,175.9	-735.4	579.7	521.7	58.03	9.991			
4,400.0	4,019.9	4,379.0	4,074.7	34.8	29.4	-120.78	-1,211.6	-759.0	596.4	536.6	59.82	9.971			
4,500.0	4,108.2	4,477.5	4,163.5	35.8	30.3	-120.56	-1,247.3	-782.6	613.1	551.5	61.60	9.953			
4,600.0	4,196.4	4,576.1	4,252.3	36.8	31.2	-120.36	-1,283.1	-806.2	629.8	566.4	63.39	9.935			
4,700.0	4,284.6	4,674.7	4,341.1	37.8	32.0	-120.17	-1,318.8	-829.9	646.5	581.3	65.18	9.919			
4,800.0	4,372.9	4,773.3	4,429.8	38.8	32.9	-119.99	-1,354.5	-853.5	663.2	596.3	66.97	9.903			
4,900.0	4,461.1	4,871.8	4,518.6	39.8	33.8	-119.81	-1,390.3	-877.1	680.0	611.2	68.76	9.889			

<b>Company:</b>	Synergy Resources	<b>Local Co-ordinate Reference:</b>	Well SRC Aims 24-10D
<b>Project:</b>	SEC.10-T5N-R66W	<b>TVD Reference:</b>	WELL @ 4871.0ft (Original Well Elev)
<b>Reference Site:</b>	SRC Aims/GCC Pad Sec.10-T5N-R66W	<b>MD Reference:</b>	WELL @ 4871.0ft (Original Well Elev)
<b>Site Error:</b>	0.0ft	<b>North Reference:</b>	True
<b>Reference Well:</b>	SRC Aims 24-10D	<b>Survey Calculation Method:</b>	Minimum Curvature
<b>Well Error:</b>	0.0ft	<b>Output errors are at</b>	2.00 sigma
<b>Reference Wellbore</b>	Wellbore #1	<b>Database:</b>	Landmark
<b>Reference Design:</b>	Plan #2 (9-21-11)	<b>Offset TVD Reference:</b>	Offset Datum

Offset Design												Offset Site Error:	0.0ft
Survey Program: 0-MWD												Offset Well Error:	0.0ft
Reference		Offset		Semi Major Axis			Distance						Warning
Measured Depth (ft)	Vertical Depth (ft)	Measured Depth (ft)	Vertical Depth (ft)	Reference (ft)	Offset (ft)	Highside Toolface (°)	Offset Wellbore Centre +N/-S (ft)	+E/-W (ft)	Between Centres (ft)	Between Ellipses (ft)	Minimum Separation (ft)	Separation Factor	
5,000.0	4,549.4	4,970.4	4,607.4	40.8	34.6	-119.65	-1,426.0	-900.7	696.7	626.1	70.55	9.875	
5,100.0	4,637.6	5,069.0	4,696.2	41.8	35.5	-119.49	-1,461.7	-924.4	713.4	641.1	72.34	9.862	
5,200.0	4,725.8	5,167.5	4,785.0	42.8	36.4	-119.34	-1,497.4	-948.0	730.2	656.0	74.13	9.850	
5,300.0	4,814.1	5,266.1	4,873.7	43.8	37.2	-119.20	-1,533.2	-971.6	746.9	671.0	75.92	9.838	
5,400.0	4,902.3	5,364.3	4,962.2	44.8	38.1	-119.06	-1,568.8	-995.1	763.6	686.0	77.69	9.829 SF	
5,500.0	4,990.5	5,458.3	5,047.6	45.8	38.7	-119.07	-1,601.5	-1,016.8	780.7	701.5	79.18	9.860	
5,600.0	5,078.8	5,552.0	5,134.0	46.8	39.2	-119.29	-1,631.7	-1,036.8	798.4	717.9	80.52	9.916	
5,700.0	5,167.0	5,645.3	5,221.1	47.8	39.7	-119.72	-1,659.5	-1,055.1	816.7	735.0	81.72	9.993	
5,800.0	5,255.2	5,737.8	5,308.6	48.8	40.2	-120.33	-1,684.7	-1,071.8	835.6	752.8	82.80	10.092	
5,900.0	5,343.5	5,829.5	5,396.1	49.8	40.6	-121.11	-1,707.3	-1,086.7	855.4	771.6	83.75	10.213	
6,000.0	5,431.7	5,920.1	5,483.5	50.7	41.0	-122.04	-1,727.4	-1,100.0	876.0	791.4	84.56	10.359	
6,100.0	5,519.9	6,009.5	5,570.4	51.7	41.3	-123.08	-1,744.9	-1,111.6	897.6	812.3	85.24	10.530	
6,200.0	5,608.2	6,100.0	5,659.0	52.7	41.6	-124.27	-1,760.3	-1,121.8	920.3	834.5	85.77	10.729	
6,246.6	5,649.3	6,138.1	5,696.5	53.2	41.7	-124.81	-1,766.1	-1,125.6	931.3	845.4	85.99	10.831	
6,300.0	5,696.6	6,184.3	5,742.0	53.7	41.9	-125.67	-1,772.6	-1,129.9	944.0	857.9	86.10	10.964	
6,400.0	5,786.5	6,270.4	5,827.2	54.4	42.1	-127.23	-1,783.0	-1,136.8	967.3	881.2	86.15	11.228	
6,500.0	5,877.9	6,356.0	5,912.2	55.1	42.3	-128.70	-1,791.2	-1,142.2	989.9	903.8	86.10	11.497	
6,600.0	5,970.6	6,441.1	5,997.0	55.7	42.4	-130.10	-1,797.3	-1,146.3	1,011.7	925.8	85.95	11.770	
6,700.0	6,064.5	6,525.7	6,081.5	56.2	42.5	-131.44	-1,801.3	-1,148.9	1,032.8	947.1	85.72	12.048	
6,800.0	6,159.6	6,609.9	6,165.6	56.7	42.6	-132.72	-1,803.2	-1,150.1	1,053.1	967.7	85.40	12.331	
6,900.0	6,255.8	6,701.0	6,256.8	57.2	42.7	-133.99	-1,803.3	-1,150.2	1,072.3	987.3	84.96	12.621	
7,000.0	6,352.8	6,798.1	6,353.8	57.6	42.7	-135.14	-1,803.3	-1,150.2	1,089.5	1,005.0	84.52	12.891	
7,100.0	6,450.6	6,895.9	6,451.6	57.9	42.8	-136.11	-1,803.3	-1,150.2	1,104.5	1,020.4	84.12	13.130	
7,150.3	6,500.0	6,945.3	6,501.0	58.1	42.8	-136.53	-1,803.3	-1,150.2	1,111.2	1,027.3	83.95	13.237	
7,200.0	6,549.0	6,994.3	6,550.0	58.2	42.8	-136.83	-1,803.3	-1,150.2	1,117.6	1,033.7	83.87	13.324	
7,300.0	6,647.5	7,092.7	6,648.5	58.6	42.9	-137.43	-1,803.3	-1,150.2	1,130.4	1,046.6	83.76	13.495	
7,400.0	6,745.9	7,191.2	6,746.9	59.0	43.0	-138.01	-1,803.3	-1,150.2	1,143.3	1,059.7	83.66	13.666	
7,500.0	6,844.4	7,289.7	6,845.4	59.4	43.0	-138.58	-1,803.3	-1,150.2	1,156.4	1,072.8	83.56	13.839	
7,600.0	6,942.9	7,388.2	6,943.9	59.7	43.1	-139.14	-1,803.3	-1,150.2	1,169.5	1,086.1	83.46	14.013	
7,700.0	7,041.4	7,486.7	7,042.4	60.1	43.2	-139.69	-1,803.3	-1,150.2	1,182.8	1,099.4	83.37	14.187	
7,800.0	7,139.9	7,585.1	7,140.9	60.5	43.2	-140.22	-1,803.3	-1,150.2	1,196.2	1,112.9	83.29	14.362	
7,900.0	7,238.3	7,683.6	7,239.3	60.9	43.3	-140.75	-1,803.3	-1,150.2	1,209.7	1,126.4	83.21	14.538	
8,000.0	7,336.8	7,782.1	7,337.8	61.3	43.4	-141.26	-1,803.3	-1,150.2	1,223.2	1,140.1	83.14	14.714	
8,100.0	7,435.3	7,880.6	7,436.3	61.6	43.4	-141.76	-1,803.3	-1,150.2	1,236.9	1,153.8	83.07	14.890	
8,200.0	7,533.8	7,979.1	7,534.8	62.0	43.5	-142.25	-1,803.3	-1,150.2	1,250.7	1,167.7	83.01	15.067	
8,300.0	7,632.3	8,077.6	7,633.3	62.4	43.6	-142.73	-1,803.3	-1,150.2	1,264.5	1,181.6	82.95	15.244	
8,400.0	7,730.8	8,176.0	7,731.8	62.8	43.6	-143.20	-1,803.3	-1,150.2	1,278.5	1,195.6	82.91	15.421	
8,500.0	7,829.2	8,274.5	7,830.2	63.2	43.7	-143.66	-1,803.3	-1,150.2	1,292.5	1,209.6	82.86	15.598	
8,600.0	7,927.7	8,373.0	7,928.7	63.5	43.8	-144.10	-1,803.3	-1,150.2	1,306.6	1,223.8	82.83	15.775	
8,637.9	7,965.0	8,409.3	7,965.0	63.6	43.8	-144.27	-1,803.3	-1,150.2	1,311.9	1,229.2	82.78	15.848	

**Company:** Synergy Resources  
**Project:** SEC.10-T5N-R66W  
**Reference Site:** SRC Aims/GCC Pad Sec.10-T5N-R66W  
**Site Error:** 0.0ft  
**Reference Well:** SRC Aims 24-10D  
**Well Error:** 0.0ft  
**Reference Wellbore:** Wellbore #1  
**Reference Design:** Plan #2 (9-21-11)

**Local Co-ordinate Reference:** Well SRC Aims 24-10D  
**TVD Reference:** WELL @ 4871.0ft (Original Well Elev)  
**MD Reference:** WELL @ 4871.0ft (Original Well Elev)  
**North Reference:** True  
**Survey Calculation Method:** Minimum Curvature  
**Output errors are at** 2.00 sigma  
**Database:** Landmark  
**Offset TVD Reference:** Offset Datum

Reference Depths are relative to WELL @ 4871.0ft (Original Well Elev) Coordinates are relative to: SRC Aims 24-10D

Offset Depths are relative to Offset Datum

Coordinate System is US State Plane 1983, Wyoming Western Zone

Grid Convergence at Surface is: 3.46°





<b>Company:</b>	Synergy Resources	<b>Local Co-ordinate Reference:</b>	Well SRC Aims 24-10D
<b>Project:</b>	SEC.10-T5N-R66W	<b>TVD Reference:</b>	WELL @ 4871.0ft (Original Well Elev)
<b>Reference Site:</b>	SRC Aims/GCC Pad Sec.10-T5N-R66W	<b>MD Reference:</b>	WELL @ 4871.0ft (Original Well Elev)
<b>Site Error:</b>	0.0ft	<b>North Reference:</b>	True
<b>Reference Well:</b>	SRC Aims 24-10D	<b>Survey Calculation Method:</b>	Minimum Curvature
<b>Well Error:</b>	0.0ft	<b>Output errors are at</b>	2.00 sigma
<b>Reference Wellbore</b>	Wellbore #1	<b>Database:</b>	Landmark
<b>Reference Design:</b>	Plan #2 (9-21-11)	<b>Offset TVD Reference:</b>	Offset Datum

Reference Depths are relative to WELL @ 4871.0ft (Original Well Elev) Coordinates are relative to: SRC Aims 24-10D  
Offset Depths are relative to Offset Datum Coordinate System is US State Plane 1983, Wyoming Western Zone  
Central Meridian is -110.083333 ° Grid Convergence at Surface is: 3.46°

