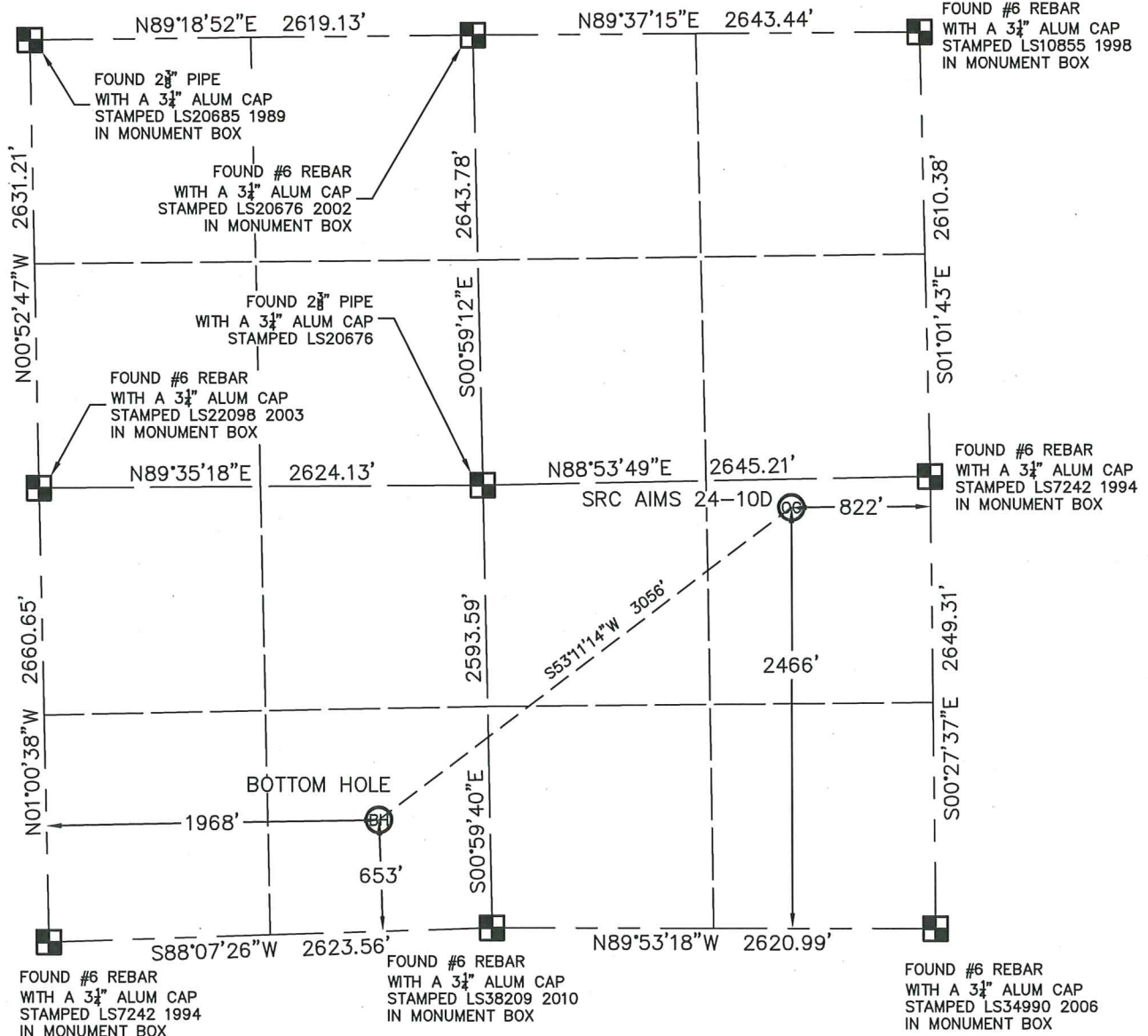


SECTION: 10
TOWNSHIP: 5N
RANGE: 66W



In accordance with a request from CRAIG RASMUSON with SYNERGY RESOURCES CORPORATION King Surveyors Inc. has determined the surface location of SRC AIMS 24-10D to be 2466' from the SOUTH line and 822' from the EAST line and the bottom hole to be 653' from the SOUTH line and 1968' from the WEST line, as measured at right angles, from the section lines of Section 10, Township 5 North, Range 66 West of the Sixth Principal Meridian, County of Weld, State of Colorado.

I hereby state that this Well Location Certificate was prepared by me, or under my direct supervision, that the fieldwork was completed on 9-14-2011, for and on behalf of SYNERGY RESOURCES CORPORATION. That this is not a Land Survey Plat or an Improvement Survey Plat, and that it is not to be relied upon for establishment of fence, building, or other future improvement lines.

NOTE:

1) Bearings shown are Grid Bearings of the Colorado State Plane Coordinate System, North Zone, North American Datum 1983/2007. The lineal dimensions as contained herein are based upon the "U.S. Survey Foot."

2) Ground elevations are based on an observed GPS elevation (NAVD 1988 DATUM).

3) NEAREST EXISTING WELL: NO EXISTING WELLS IN THIS SECTION

4) IMPROVEMENTS: See LOCATION DRAWING exhibit for all visible improvements within 400' of disturbed area.

5) SURFACE USE: OPEN FIELD

6) FIELD OPERATOR: CHAD DILKA

SURFACE LOCATION
LATITUDE: 40.41366°N
LONGITUDE: 104.75924°W
PDOP: 1.2
ELEV: 4858'
1/4,1/4: NE1/4 SE1/4
NEAREST PROPERTY LINE

BOTTOM HOLE
LATITUDE: 40.40869°N
LONGITUDE: 104.76808°W

NOTE

NOTE: According to Colorado law, you must commence any legal action based upon any defect in this W.L.C. within three years after you discover such defect. In no event, may any action based upon any defect in this survey be commenced more than ten years after the date of the certificate shown hereon. (13-80-105 C.R.S.)



= FOUND ALIQUOT MONUMENT
AS DESCRIBED



= CALCULATED POSITION



= SET ALIQUOT MONUMENT
AS DESCRIBED

Michael Chad Dilka - On Behalf Of King Surveyors, Inc.
Colorado Licensed Professional Land Surveyor #38106

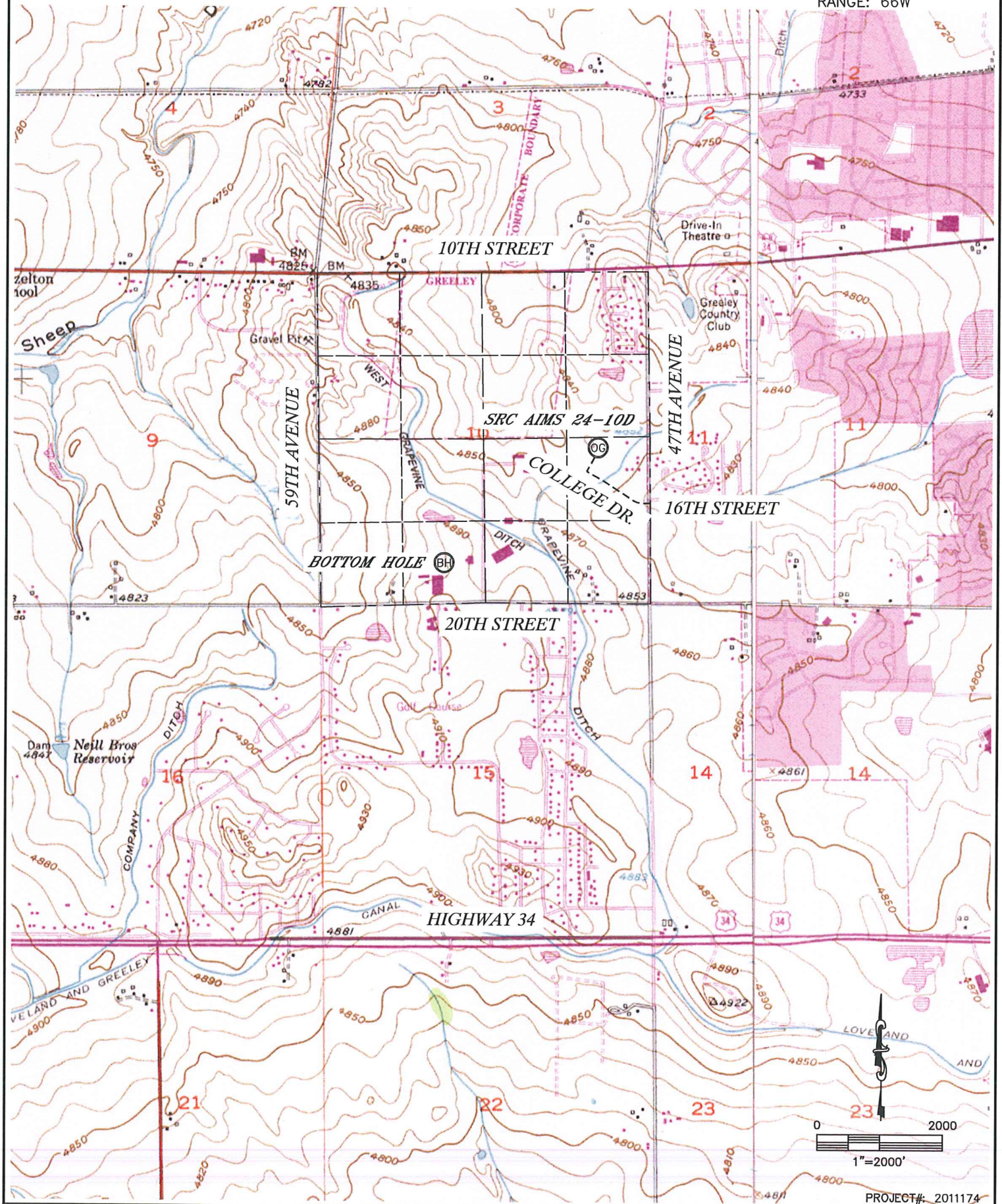
PROJECT#: 2011174

KING SURVEYORS, INC. 650 E. GARDEN DR. WINDSOR, CO 80550

ACCESS ROAD MAP

SRC AIMS 24-10D

SECTION: 10
TOWNSHIP: 5N
RANGE: 66W



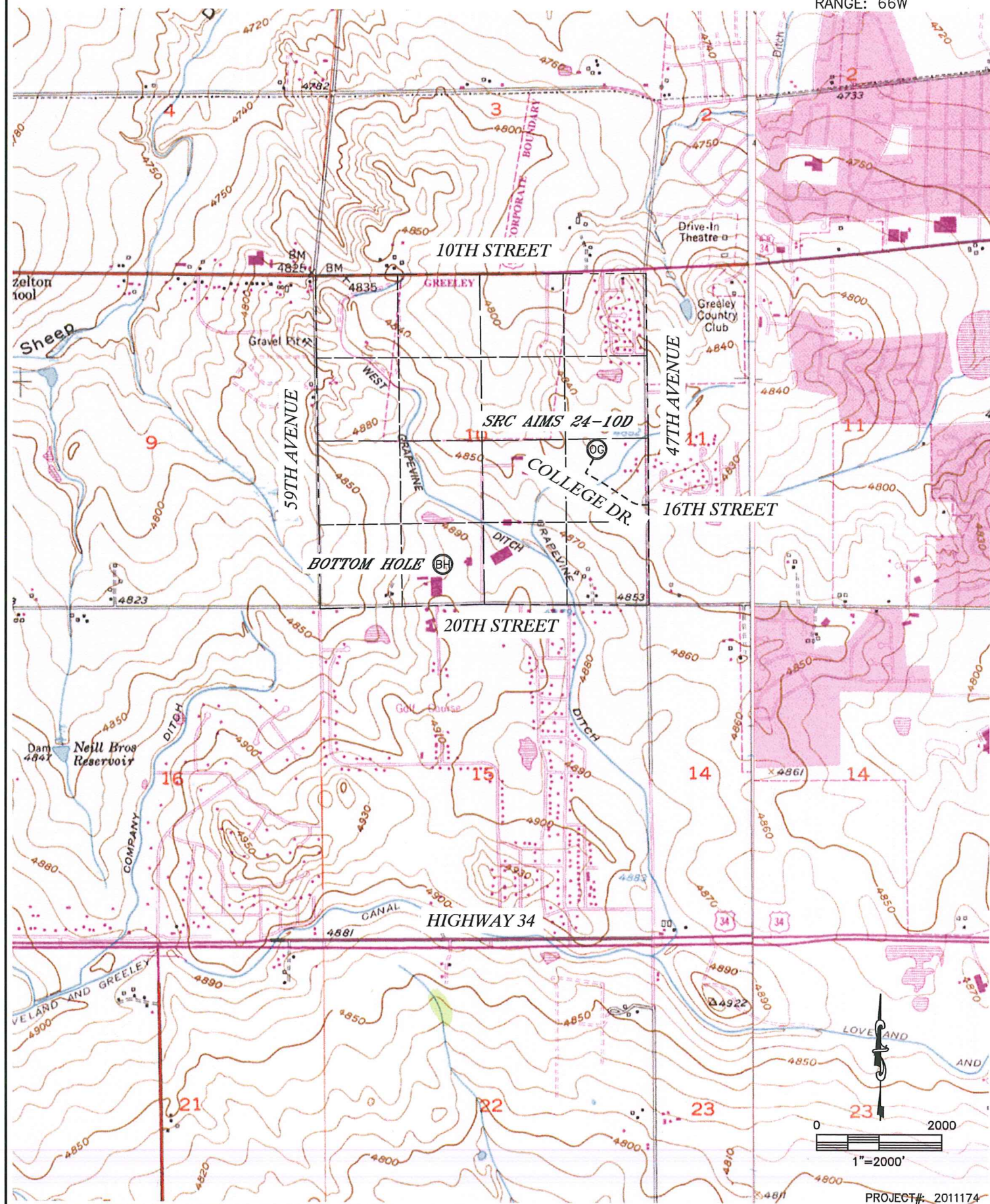
PROJECT# 2011174

KING SURVEYORS, INC. 650 E. GARDEN DR. WINDSOR, CO 80550

TOPOGRAPHIC MAP

SRC AIMS 24-10D

SECTION: 10
TOWNSHIP: 5N
RANGE: 66W



PROJECT# 2011174

LOCATION DRAWING

SRC AIMS 24-10D

SECTION: 10
TOWNSHIP: 5N
RANGE: 66W



- (A) PROPERTY LINE 166'N, 356'E, 481'SE
- (B) OVERHEAD UTILITY LINE 156'N, 355'E
- (C) FENCE 168'N, 356'E, 496'SW, 527'NW
- (D) WATERLINE 46'NW, 149'NW, 207'SW, 224'SW
- (E) BLOWOFF 211'SW, 241'SW, 264'SW, 489'SE
- (F) WATER MANHOLE 275'SW, 356'SW
- (G) WATER VALVE 349'SW, 377'SW, 487'SE
- (H) ANTENNA 267'SW
- (I) ELECTRIC METER 272'SW
- (J) IRRIGATION CONTROL BOX 463'SW
- (K) BOLLARD 432'SW, 521'S
- (L) AIMS SIGN 488'SW
- (M) LIGHT POLE 402'SW
- (N) NE EDGE ASPHALT ROAD 397'SW
- (O) E EDGE FIELD ROAD 357'W

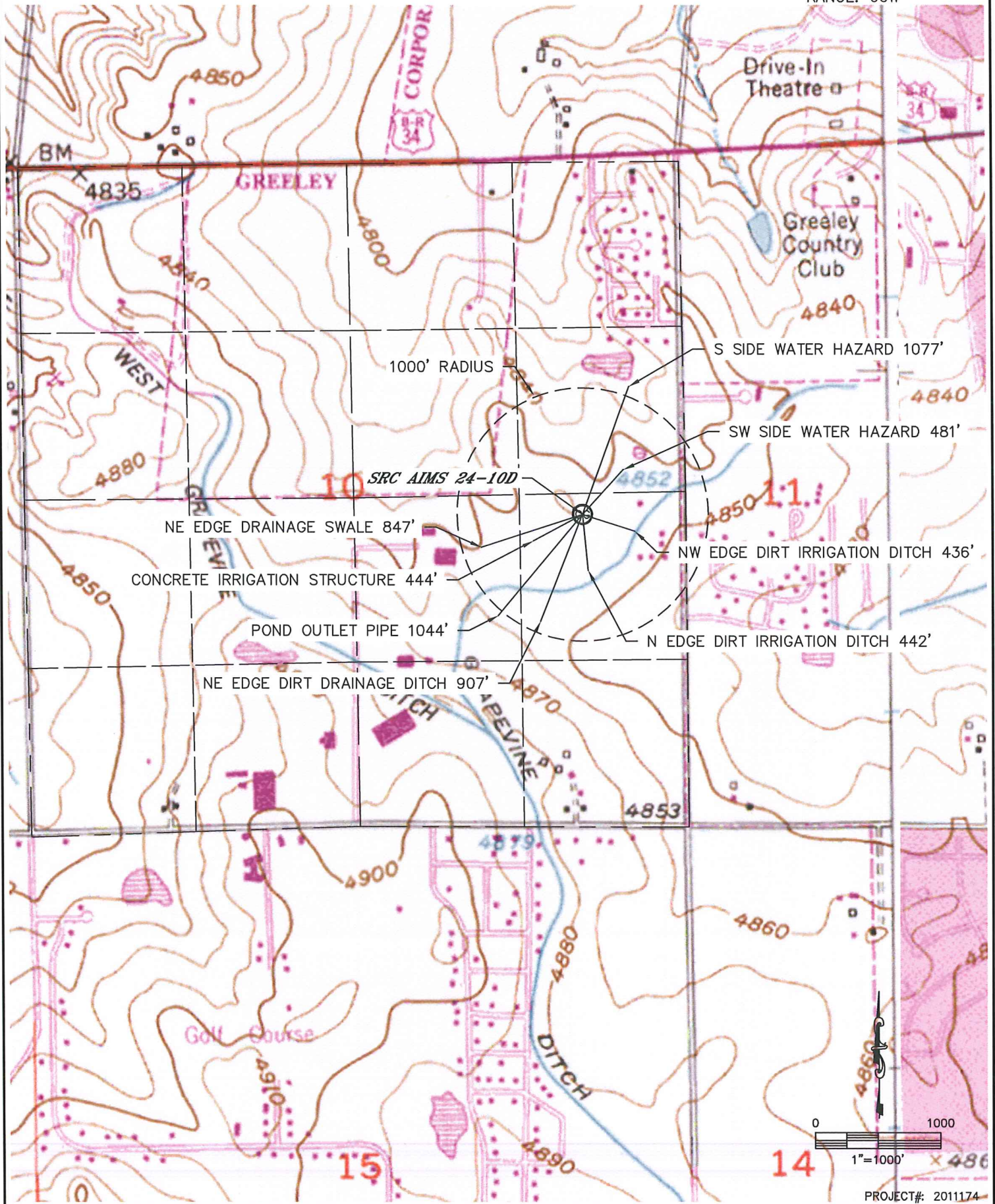
- (P) N EDGE DITCH ROAD 444'S
- (Q) NW EDGE IRRIGATION DITCH 436'SE, 442'S
- (R) CONCRETE IRRIGATION STRUCTURE 444'SW, 476'S
- (S) HOUSE 586'NW, 635'NW, 456'E, 624'E, 682'SE, 681'SE, 598'SE
- (T) GARAGE 645'SE
- (U) BARN/SHED 375'E, 521'SE, 640'SE, 673'SE, 603'SE, 606'NW
- (V) PUTTING GREEN 227'N, 379'NW
- (W) SAND TRAP 307'N, 347'NW, 465'NW
- (X) SW SIDE WATER HAZARD 481'NE
- (Y) TEE BOX 456'NE, 509'NW, 528'NW
- (Z) CART PATH 369'NE, 490'NW, 462'NW, 553'NW
- (AA) S EDGE FAIRWAY 201'N, 327'NW
- (BB) TELEPHONE PEDESTAL 531'NW, 761'NE
- (CC) WATER METER 472'SE, 502'SE
- (DD) CONCRETE MANHOLE 426' NE

NEAREST:
BUILDING=375' E
PUBLIC ROAD=397' SW
ABOVE GND UTILITY=156' N
RAILROAD=5280'+
PROPERTY LINE= 166' N

HYDROLOGY MAP

SRC AIMS 24-10D

SECTION: 10
TOWNSHIP: 5N
RANGE: 66W



SRC AIMS 24-10D
TOWNSHIP 5 NORTH, RANGE 66 WEST
SECTION 10: NE1/4SE1/4
WELD COUNTY, COLORADO

WELL FACING NORTH
PICTURE DATED: 9/14/2011



WELL FACING SOUTH
PICTURE DATED: 9/14/2011



SRC AIMS 24-10D
TOWNSHIP 5 NORTH, RANGE 66 WEST
SECTION 10: NE1/4SE1/4
WELD COUNTY, COLORADO

WELL FACING EAST
PICTURE DATED: 9/14/2011



WELL FACING WEST
PICTURE DATED: 9/14/2011



SRC AIMS 24-10D
TOWNSHIP 5 NORTH, RANGE 66 WEST
SECTION 10: NE1/4SE1/4
WELD COUNTY, COLORADO

REFERENCE AREA FACING WEST
PICTURE DATED: 9/14/2011

