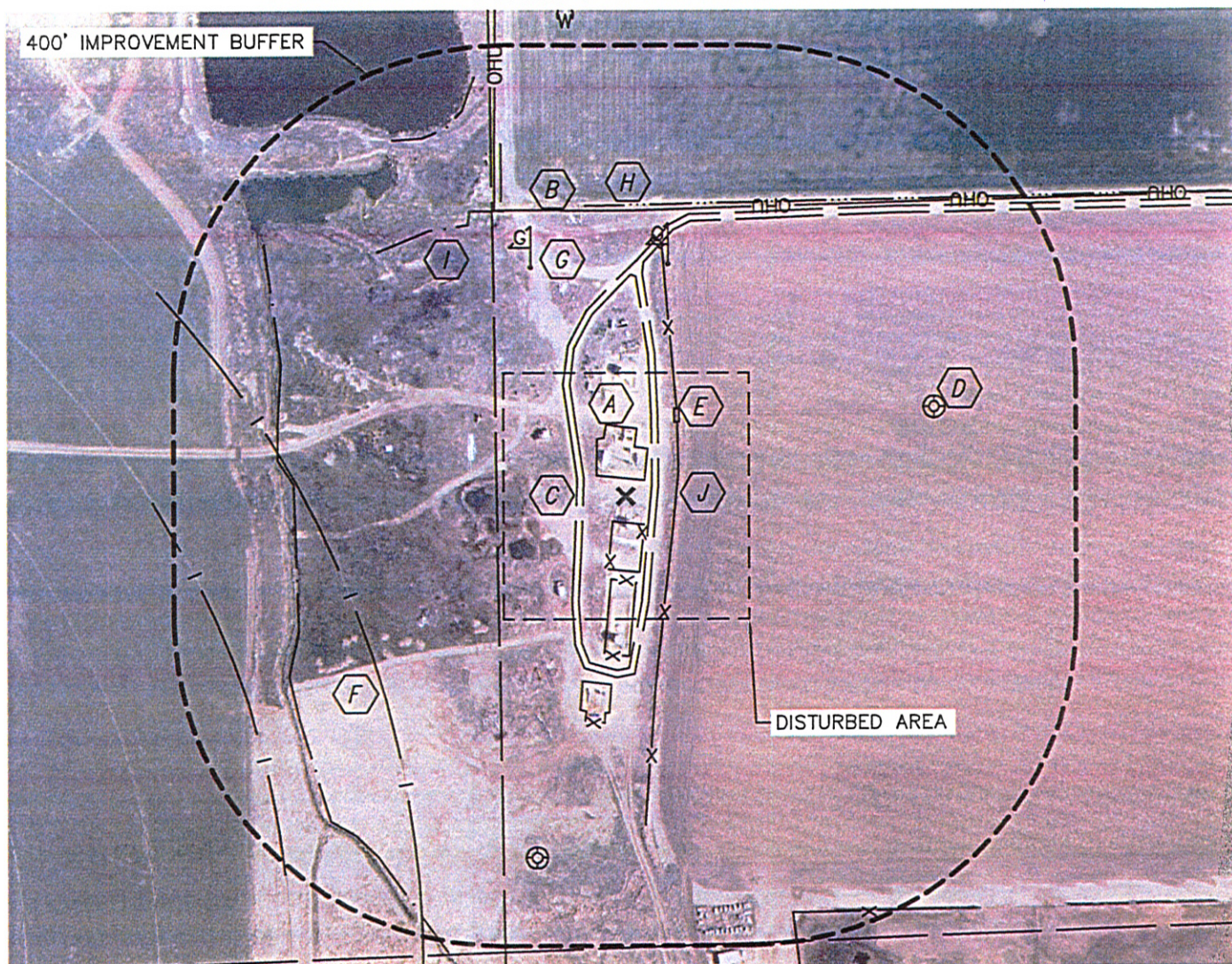


PRODUCTION FACILITY LOCATION DRAWING

SCHMIDT G30-65HN

SECTION: 25
TOWNSHIP: 4N
RANGE: 66W



REFERENCE POINT LOCATION:

LATITUDE: 40.28118°N
LONGITUDE: 104.71973°W
ELEV: 4792'

PDOP: 1.3

DATE: 3-22-11

OPERATOR: ADAM KELLY

1/41/4: NE1/4SE1/4

FSL: 1842'

FEL: 1174'

DISTANCE TO WELL: 1172'

ASSOCIATED NEW WELLS:

SCHMIDT G30-65HN

ASSOCIATED EXISTING WELLS:

SCHMIDT G30-32, 25-10F,

25-15F, K25-2316, 25-9F,

25-16F, K25-22

IMPROVEMENTS:

- | | | | |
|--|---|--|----------------------|
| | EX. PRODUCTION EQUIPMENT 21' N, 33' S, (NOBLE)
102' S, 230' S (KERR MCGEE) | | FENCE 61' E, 550' SE |
| | OVERHEAD UTILITY 348' N | | |
| | FIELD ROAD 30' E, 52' W | | |
| | EX. WELL 391' NE, 455' SW | | |
| | CATTLE GUARD 110' NE, 307' NE | | |
| | IRRIGATION PIVOT TRACK 358' SW, 519' SW | | |
| | GAS MARKER 288' NE, 302' NW | | |
| | DITCH 355' N, 405' W | | |
| | POND 385' NW, 500' NW | | |

LEGEND

- REFERENCE POINT
ALL DISTANCES ARE APPROXIMATE.

NEAREST: BUILDING 570' SE,
PUBLIC ROAD 1160' E, ABOVE GROUND UTILITY 348' N,
RAILROAD 5280'+, PROPERTY LINE 738' N

