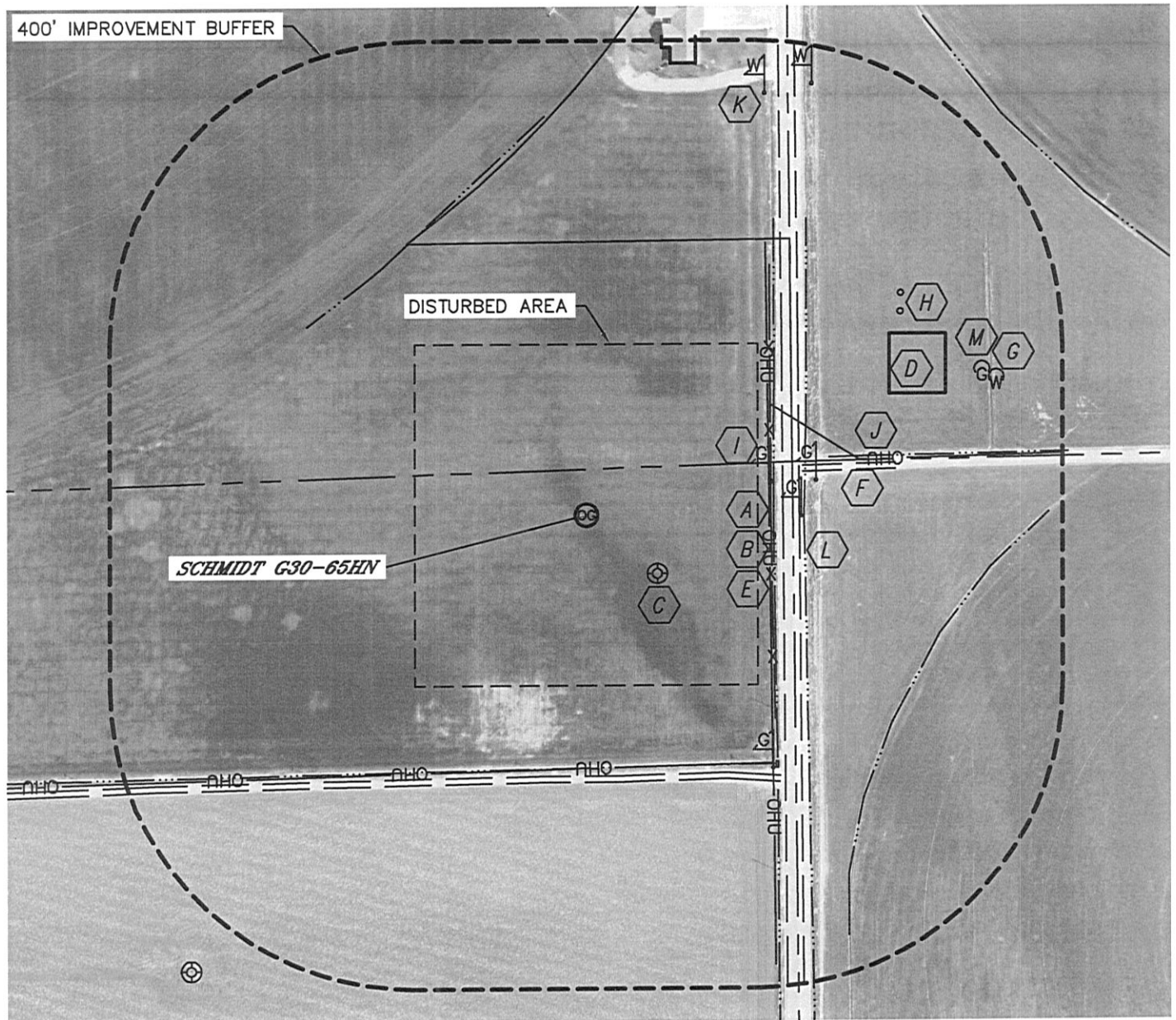


LOCATION DRAWING

SCHMIDT G30-65HN

SECTION: 25
TOWNSHIP: 4N
RANGE: 66W



IMPROVEMENTS:

- | | |
|--|--|
| A COUNTY ROAD 37 258' E | G WATER WELL 568' NE |
| B OVERHEAD UTILITY 240' E, 344' S | H SEPTIC TANK 492' NE |
| C EX. WELL 121' SE | I GAS MARKERS 247' NE, 282' NE, 305' NE, 415' SE, |
| D HOUSE 428' NE, 605' NE | J DITCH 422' NW, 328' NE, 485' SE, 335' S |
| E FENCE 242' E | K WATER MARKER 603' NE, 641' NE |
| F FIELD ROAD 345' S, 290' NE | L BARROW DITCH 246' E, 286' E |
| | M PROPANE TANK 553' NE |

NEAREST: BUILDING 428' NE, PUBLIC ROAD (CR 37) 258' E,
ABOVE GROUND UTILITY 240' E, RAILROAD 5280'+, PROPERTY LINE 60' N

