

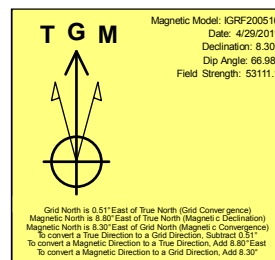
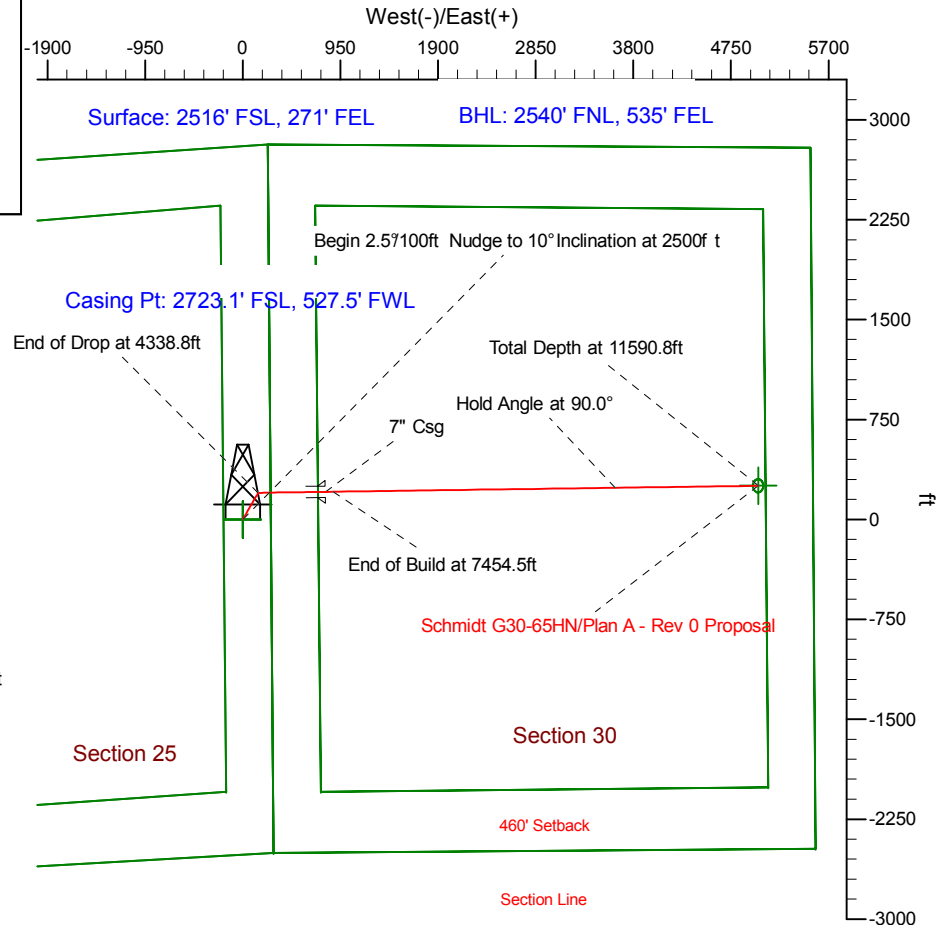
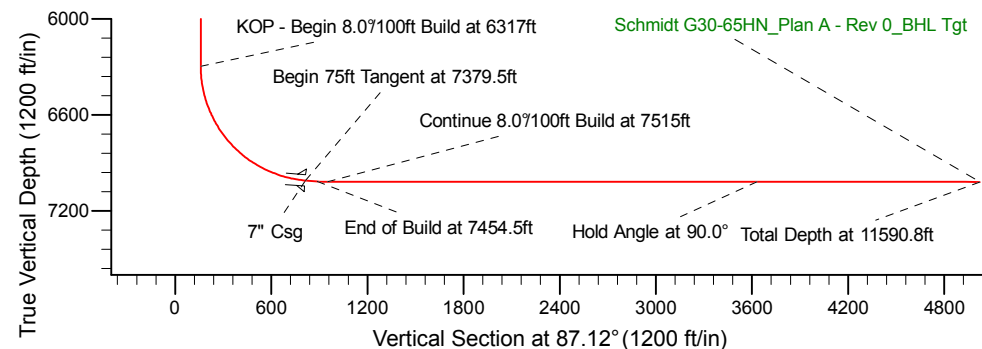
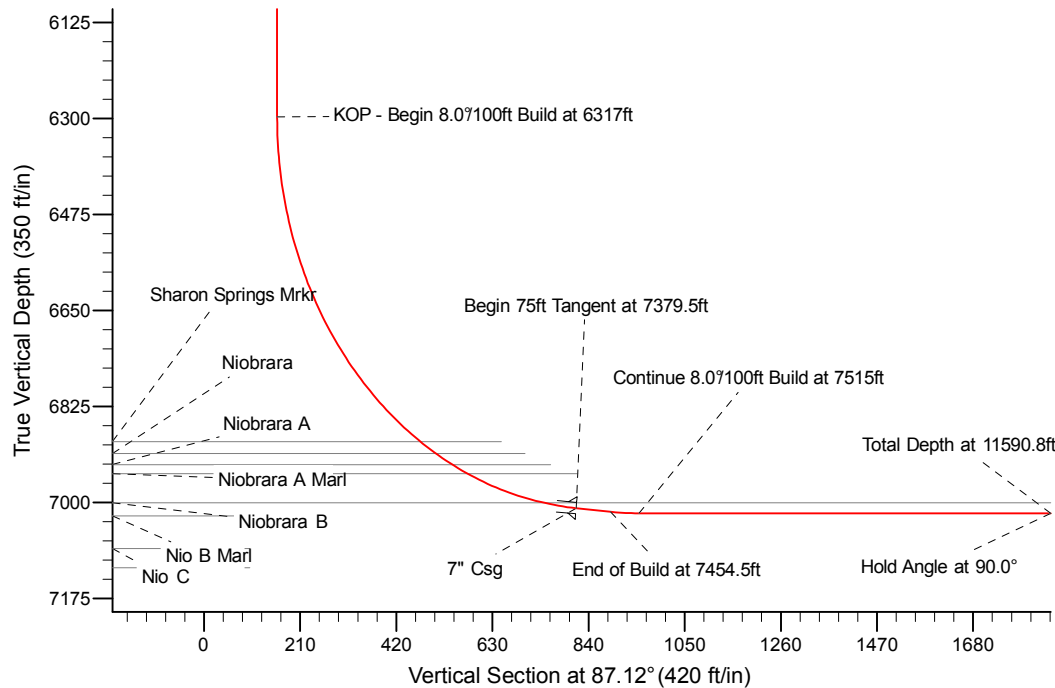
Project: Weld County Colorado (NAD 83)
 Site: Sec.25, T4N, R66W
 Well: Schmidt G30-65HN
 Wellbore: Plan A - Rev 0 (PERMITTING PLAN ONLY)
 Design: Plan A - Rev 0 Proposal

Noble Energy

HALLIBURTON
 Sperry Drilling

SECTION DETAILS

Sec	MD	Inc	Azi	TVD	+N/-S	+E/-W	Dleg	TFace	Vsect	Target
1	0.0	0.00	0.00	0.0	0.0	0.0	0.00	0.00	0.0	
2	2500.0	0.00	0.00	2500.0	0.0	0.0	0.00	0.00	0.0	
3	2899.9	10.00	36.87	2897.9	27.8	20.9	2.50	36.87	22.3	
4	3938.9	10.00	36.87	3921.1	172.2	129.1	0.00	0.00	137.6	
5	4338.8	0.00	0.00	4319.0	200.0	150.0	2.50	180.00	159.9	
6	6317.0	0.00	0.00	6297.2	200.0	150.0	0.00	0.00	159.9	
7	7379.5	85.00	89.38	7010.6	207.1	803.7	8.00	89.38	813.1	
8	7454.5	85.00	89.38	7017.2	207.9	878.4	0.00	0.00	887.8	
9	7517.0	90.00	89.38	7019.9	208.6	940.9	8.00	0.00	950.2	
10	11590.8	90.00	89.38	7020.0	252.5	5014.4	0.00	123.29	5020.8	Schmidt G30-65HN_Plan A - Rev 0_BHL Tgt-



WELL DETAILS: Schmidt G30-65HN(NAD83 Geodetic System)			
	Ground Level:	4789.0	
Northing	Easting	Latitude	Longitude
410548.22	981027.06	40° 16' 59.160 N	104° 42' 59.400 W
Plan: Plan A - Rev 0 Proposal (Schmidt G30-65HN/Plan A - Rev 0 (PERMITTING PLAN ONLY))			
Created By: Erasmo Mendoza		Date: 10:56, April 29 2011	
OK to submit with 2A as per Noble Drilling			
5/02/2011			