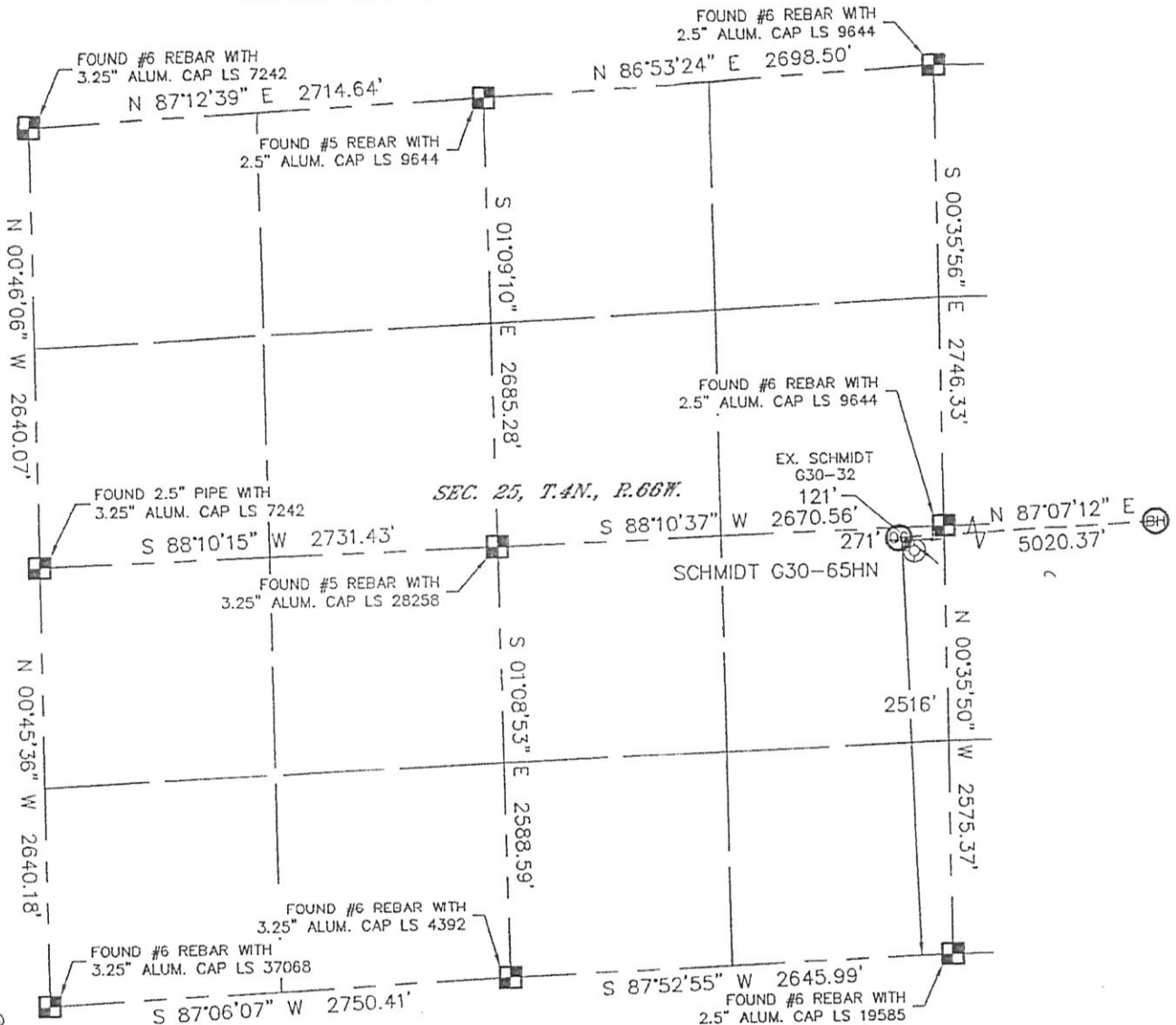


WELL LOCATION CERTIFICATE

THIS MAP DOES NOT REPRESENT A BOUNDARY SURVEY

SECTION: 25
TOWNSHIP: 4N
RANGE: 66W



In accordance with a request from Erik Van Decar with Noble Energy Inc. Lat40°, Inc. has determined the surface location of the SCHMIDT G30-65HN to be 2516' from the SOUTH line and 271' from the EAST line as measured at right angles from the section lines of Section 25, Township 4 North, Range 66 West and the bottom hole to be 2540' from the NORTH line and 535' from the EAST line as measured at right angles from the section lines of Section 30, Township 4 North, Range 65 West of the Sixth Principal Meridian, County of Weld, State of Colorado. I hereby state that this Well Location Certificate was prepared by me, or under my direct supervision, that the fieldwork was completed on 3/22/11, for and on behalf of Noble Energy Inc. That this is not a Land Survey Plat or an Improvement Survey Plat, and that it is not to be relied upon for establishment of fence, building, or other future improvement lines.

SURFACE LOCATION
LATITUDE: 40.28310°N
LONGITUDE: 104.71650°W
PDOP: 1.6
ELEV: 4789'
1/4, 1/4: NE1/4SE1/4
NEAREST PROPERTY LINE: 60' NORTH

BOTTOM HOLE
LATITUDE: 40.28367°N
LONGITUDE: 104.69852°W

NOTE:

- 1) Bearings shown are Grid Bearings of the Colorado State Plane Coordinate System, North Zone, North American Datum 1983/2007. The lineal dimensions as contained herein are based upon the "U.S. Survey Foot."
- 2) Ground elevations are based on an observed GPS elevation (NAVD 1988 DATUM).
- 3) NEAREST EXISTING WELL: SCHMIDT G30-32 121'
- 4) IMPROVEMENTS: See LOCATION DRAWING for all visible improvements within 400' of disturbed area.
- 5) SURFACE USE: CROP LAND
- 6) INSTRUMENT OPERATOR: ADAM KELLY

NOTE

According to Colorado law, you must commence any legal action based upon any defect in this W.L.C. within three years after you discover such defect. In no event, may any action based upon any defect in this survey be commenced more than ten years after the date of the certificate shown hereon. (13-80-105 C.R.S.)

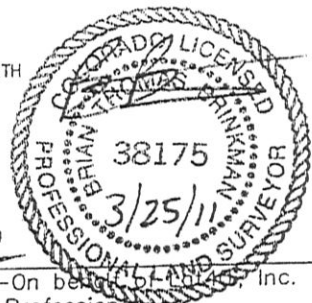
LEGEND

- = ALIQUOT MONUMENT AS DESCRIBED
- = CALCULATED POSITION

SHEET 1 OF 2

Brian T. Brinkman-On behalf of Lat40°, Inc.
Colorado Licensed Professional
Land Surveyor No. 38175

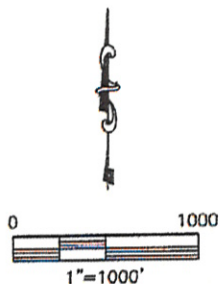
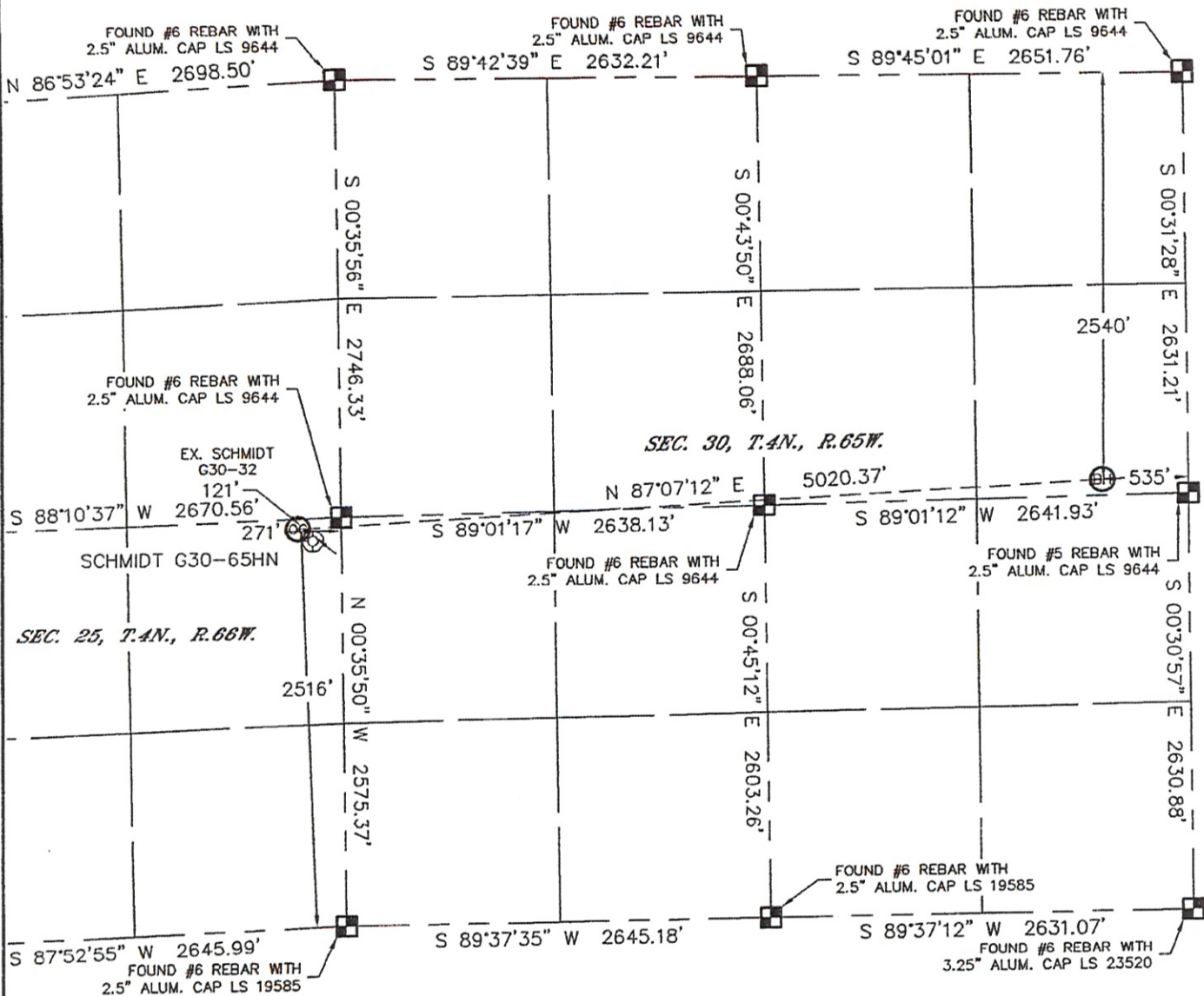
PROJECT#: 2011075



WELL LOCATION CERTIFICATE

THIS MAP DOES NOT REPRESENT A BOUNDARY SURVEY

SECTION: 25
TOWNSHIP: 4N
RANGE: 66W



NOTE
According to Colorado law, you must commence any legal action based upon any defect in this W.L.C. within three years after you discover such defect. In no event, may any action based upon any defect in this survey be commenced more than ten years after the date of the certificate shown hereon. (13-80-105 C.R.S.)

LEGEND

- = ALIQUOT MONUMENT AS DESCRIBED
- = CALCULATED POSITION



SHEET 2 OF 2

Brian T. Brinkman—On behalf of Lat40°, Inc.
Colorado Licensed Professional
Land Surveyor No. 38175 PROJECT#: 2011075

Lat40°, Inc.

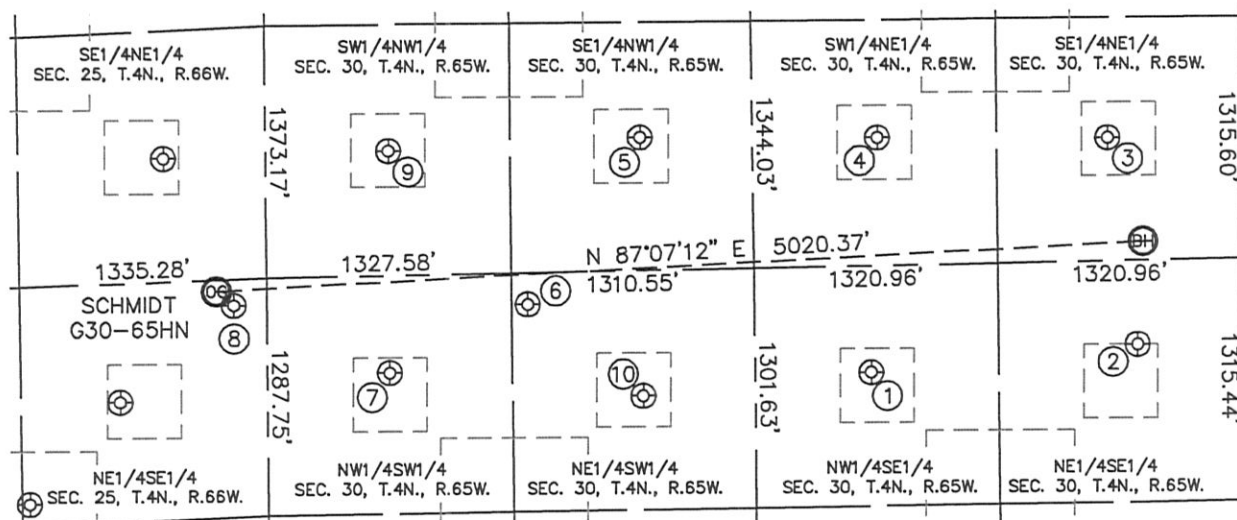
1635 Foxtrail Drive, Suite 325

Loveland, CO 80538

SITE SKETCH

SCHMIDT G30-65HN

SECTION: 25
TOWNSHIP: 4N
RANGE: 66W



①

OSTER G30-10
NW1/4SE1/4
2167' FSL
2011' FEL
LAT-40.28177°N
LONG-104.70381°W
PDOP: 3.0
ELEV: 4827'

②

OSTER G30-9
NE1/4SE1/4
2167' FSL
568' FEL
LAT-40.28213°N
LONG-104.69864°W
PDOP: 3.1
ELEV: 4837'

③

HSR-VASSER 8-30
SE1/4NE1/4
1977' FNL
721' FEL
LAT-40.28522°N
LONG-104.69919°W
PDOP: 2.3
ELEV: 4819'

④

HSR-MORROW 7-30
SW1/4NE1/4
1977' FNL
1968' FEL
LAT-40.28527°N
LONG-104.70366°W
PDOP: 3.2
ELEV: 4808'

⑤

SCHMIDT 30-6G
SE1/4NW1/4
1976' FNL
2030' FWL
LAT-40.28532°N
LONG-104.70826°W
PDOP: 2.2
ELEV: 4800'

⑥

SCHMIDT G30-20
NE1/4SW1/4
2419' FSL
1413' FWL
LAT-40.28285°N
LONG-104.71046°W
PDOP: 2.8
ELEV: 4801'

⑦

SCHMIDT 30-12G
NW1/4SW1/4
2055' FSL
663' FWL
LAT-40.28185°N
LONG-104.71315°W
PDOP: 1.9
ELEV: 4802'

⑧

SCHMIDT G30-32
NE1/4SE1/4
2435' FSL
179' FEL
LAT-40.28289°N
LONG-104.71617°W
PDOP: 1.3
ELEV: 4791'

⑨

SCHMIDT 30-5G
SW1/4NW1/4
2052' FNL
667' FWL
LAT-40.28517°N
LONG-104.71314°W
PDOP: 1.6
ELEV: 4788'

⑩

SCHMIDT 30-11G
NE1/4SW1/4
1916' FSL
2035' FWL
LAT-40.28146°N
LONG-104.70823°W
PDOP: 1.1
ELEV: 4813'

