

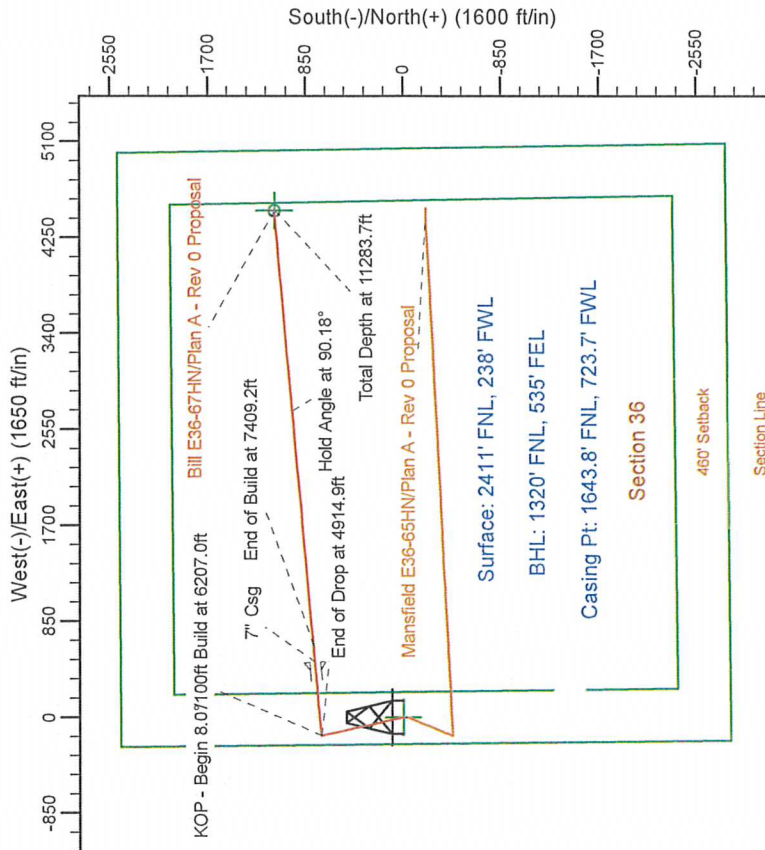
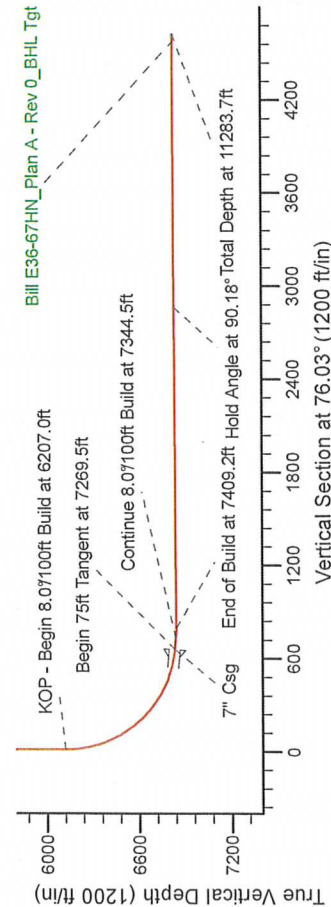
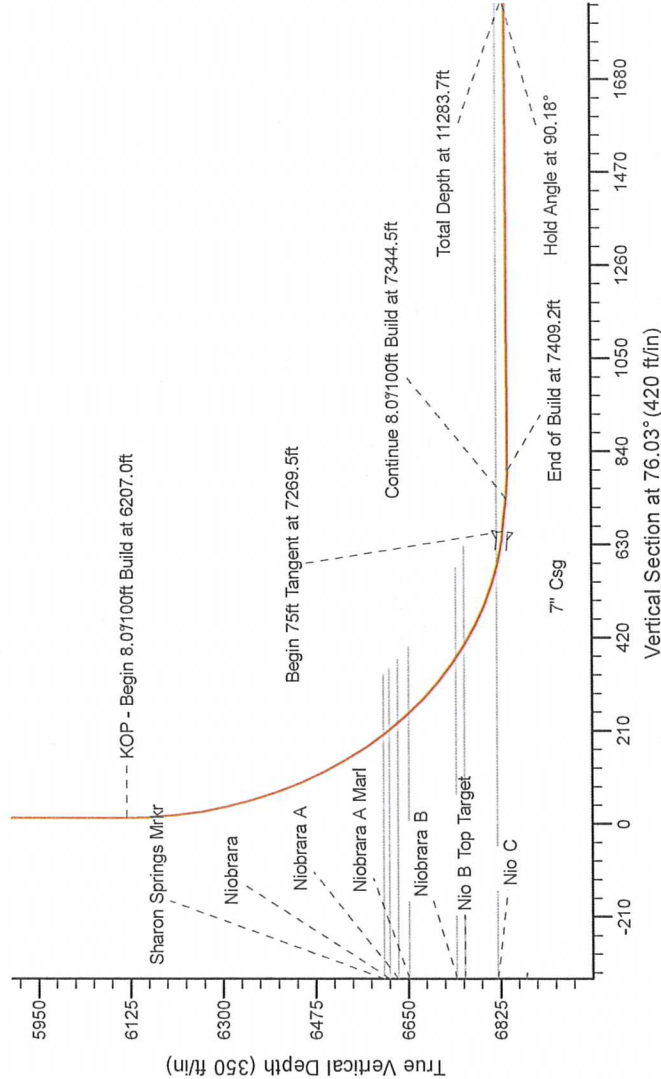
Noble Energy

Project: Weld County Colorado (NAD 83)
 Site: Sec. 36, T6N, R65W
 Well: Bill E36-67HN
 Wellbore: Plan A - Rev 0 (PERMITTING PLAN ONLY)
 Design: Plan A - Rev 0 Proposal

HALLIBURTON
 Sperry Drilling

SECTION DETAILS

Sec	MD	Inc	Azi	TVD	+N/-S	+E/-W	Dleg	TFace	VSec	Target
1	0.0	0.00	0.00	0.0	0.0	0.0	0.00	0.00	0.0	
2	1500.0	0.00	0.00	1500.0	0.0	0.0	0.00	0.00	0.0	
3	2100.0	15.00	347.09	2093.2	76.1	-17.4	2.50	347.09	1.4	
4	4314.9	15.00	347.09	4232.6	634.9	-145.6	0.00	0.00	12.0	
5	4914.9	0.00	0.00	4825.8	711.0	-163.0	2.50	180.00	13.4	
6	6207.0	0.00	0.00	6117.9	711.0	-163.0	0.00	0.00	13.4	
7	7269.5	85.00	85.02	6931.3	488.3	8.00	85.02	659.2	733.0	
8	7344.5	85.00	85.02	6937.9	774.3	562.7	0.00	0.00	796.9	
9	7409.2	90.18	85.02	6840.6	627.2	8.00	0.00	0.00	796.9	
10	11283.7	90.18	85.03	6828.5	1116.1	4487.0	0.00	99.86	4623.7	Bill E36-67HN_Plan A - Rev 0_BHL Tgt



Section 36

460' Setback

Section Line

Surface: 2411' FNL, 238' FWL

BHL: 1320' FNL, 535' FEL

Casing Pt: 1643.8' FNL, 723.7' FWL

Bill E36-67HN/Plan A - Rev 0 Proposal

7\"/>

End of Drop at 4914.9ft

Hold Angle at 90.18°

Total Depth at 11283.7ft

Surface: 2411' FNL, 238' FWL

BHL: 1320' FNL, 535' FEL

Casing Pt: 1643.8' FNL, 723.7' FWL

WELL DETAILS: Bill E36-67HN(NAD83 Geodetic System)

Ground Level: 4654.0

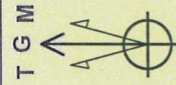
Latitude: 40° 28' 35.052 N

Longitude: 104° 37' 11.568 W

Plan: Plan A - Rev 0 Proposal (Bill E36-67HN/Plan A - Rev 0 (PERMITTING PLAN ONLY))

Created By: Erasmo Mendoza Date: 20.32, September 18 2011

Magnetic Model: IGRF2010
 Date: 9/18/2011
 Declination: 11.568 W
 Dip Angle: 67.10°
 Field Strength: 53.13.4



Declination is 11.568° East of True North (Grid Conversion)
 Magnetic North is 11.568° East of True North (Magnetic Declination)
 To convert a True Direction to a Grid Direction, Subtract 11.568°
 To convert a Magnetic Direction to a Grid Direction, Add 11.568°