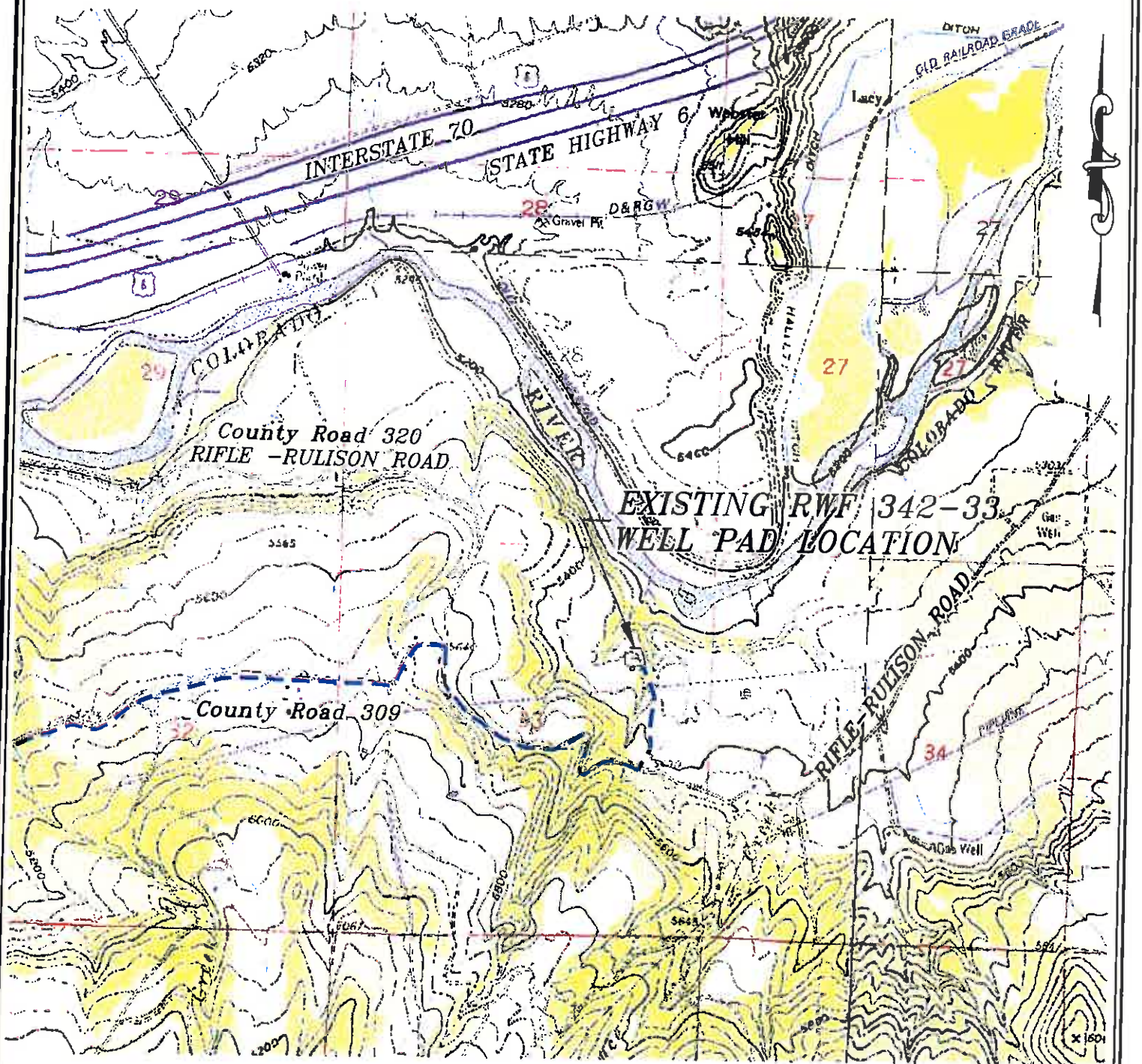


Section 33
T. 6 S., R 94 W



ACCESS DESCRIPTION:

FROM THE INTERSECTION OF STATE HIGHWAY 6 AND COUNTY ROAD 323 (RULISON ROAD) NORTH OF RULISON, PROCEED SOUTHERLY ALONG COUNTY ROAD 323 (RULISON ROAD) ± 1.1 MILES TO THE INTERSECTION WITH COUNTY ROAD 309 (RULISON PARACHUTE ROAD), PROCEED LEFT IN AN EASTERLY DIRECTION ± 2.3 MILES TO THE INTERSECTION WITH COUNTY ROAD 320 (RIFLE RULISON ROAD), PROCEED RIGHT IN AN EASTERLY DIRECTION ± 0.8 MILES TO AN INTERSECTION WITH A DIRT/GRAVEL ROAD, PROCEED LEFT IN A NORTHERLY DIRECTION ± 0.3 MILES TO THE EXISTING RWF 342-33 DRILL PAD LOCATION, AS SHOWN HEREON.

130 East Third Street
Vail, Colorado 81654
Ph: 970.635.2120
Fax: 970.635.2173



BOOKCLIFF
Survey Services, Inc.

SCALE: 1" = 2000'
DATE: 6/27/11
PLAT: 5 of 7
PROJECT: Williams Valley
DFT: cws

Construction Plan Prepared for:
Williams Williams Production, RMT

RWF 342-33 Drill Pad - Plat 5
ACCESS ROAD MAP