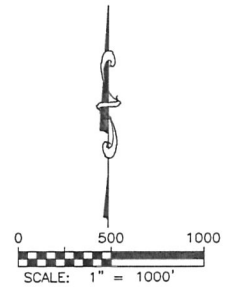
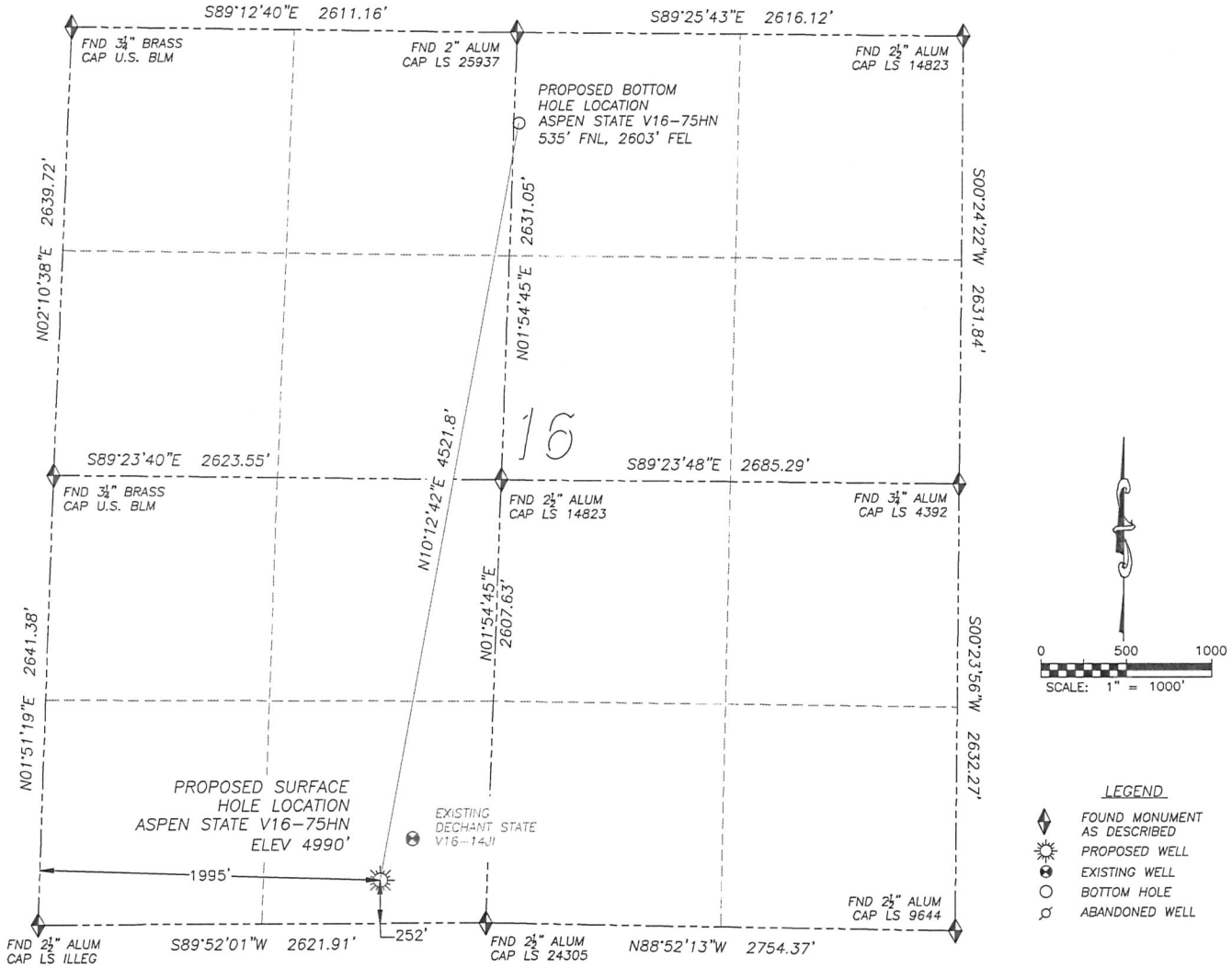


# WELL LOCATION CERTIFICATE ASPEN STATE V16-75HN

SECTION 16, TOWNSHIP 2 NORTH, RANGE 67 WEST OF THE 6TH PRINCIPAL MERIDIAN



**LEGEND**

- ◆ FOUND MONUMENT AS DESCRIBED
- ☀ PROPOSED WELL
- ⊙ EXISTING WELL
- BOTTOM HOLE
- ⊘ ABANDONED WELL

**NAD 83 LATITUDE AND LONGITUDE**

ASPEN STATE V16-75HN  
 SURFACE HOLE:  
 LATITUDE: N40.13187'  
 LONGITUDE: W104.89813'  
 ELEVATION: 4990'  
 FOOTAGE: 252' FSL, 1995' FWL  
 PDOP: 1.9  
 QTR/QTR: SE4/SW4  
 PROP LINE: 222'± SOUTH

BOTTOM HOLE:  
 LATITUDE: N40.14408'  
 LONGITUDE: W104.89527'  
 FOOTAGE: 535' FNL, 2603' FEL

NEAREST EXISTING WELL:  
 DECHANT STATE V16-14J SURFACE HOLE  
 LATITUDE: N40.13254'  
 LONGITUDE: W104.89746'  
 ELEVATION: 4990'  
 308' NORTHEAST

IN ACCORDANCE WITH A REQUEST FROM NATE McCORKELL OF NOBLE ENERGY INC., DALEY LAND SURVEYING, INC. HAS DETERMINED THE SURFACE LOCATION OF THE ASPEN STATE V16-75HN WELL TO BE 252' FSL, 1995' FWL, AS MEASURED AT NINETY (90) DEGREES FROM THE SECTION LINES OF SECTION 16, TOWNSHIP 2 NORTH, RANGE 67 WEST OF THE 6TH PRINCIPAL MERIDIAN, WELD COUNTY, COLORADO. THE BOTTOM HOLE LOCATION, PROVIDED BY THE CLIENT, IS TO BE 535' FNL, 2603' FEL.

I HEREBY CERTIFY THAT THIS WELL LOCATION CERTIFICATE WAS PREPARED BY ME OR UNDER MY DIRECT SUPERVISION, THAT THE WORK WAS COMPLETED ON 5/06/2011 FOR AND ON BEHALF OF NOBLE ENERGY, INC., AND THAT THIS MAP DOES NOT REPRESENT A BOUNDARY SURVEY, IT IS NOT A LAND SURVEY PLAT OR AN IMPROVEMENT SURVEY PLAT AND IT IS NOT TO BE RELIED UPON FOR THE ESTABLISHMENT OF FENCE, BUILDING OR OTHER FUTURE IMPROVEMENT LINES.

- NOTES:
- 1) BEARINGS FOR THIS MAP ARE ASSUMED AND BASED UPON GPS OBSERVATIONS MADE BETWEEN MONUMENTS LOCATED AT THE SOUTHWEST CORNER AND WEST QUARTER CORNER OF SECTION 16, T.2N., R.67W.
  - 2) HORIZONTAL DATUM IS NAD83.
  - 3) VERTICAL DATUM IS NAVD88. ELEVATIONS ARE DERIVED FROM GPS OBSERVATIONS PROCESSED THROUGH OPUS, UTILIZING THE GEIOD03 MODEL.
  - 4) SEE LOCATION DRAWING FOR VISIBLE IMPROVEMENTS WITHIN 600' OF PROPOSED SURFACE HOLE LOCATION.
  - 5) SURFACE USE: PASTURE.

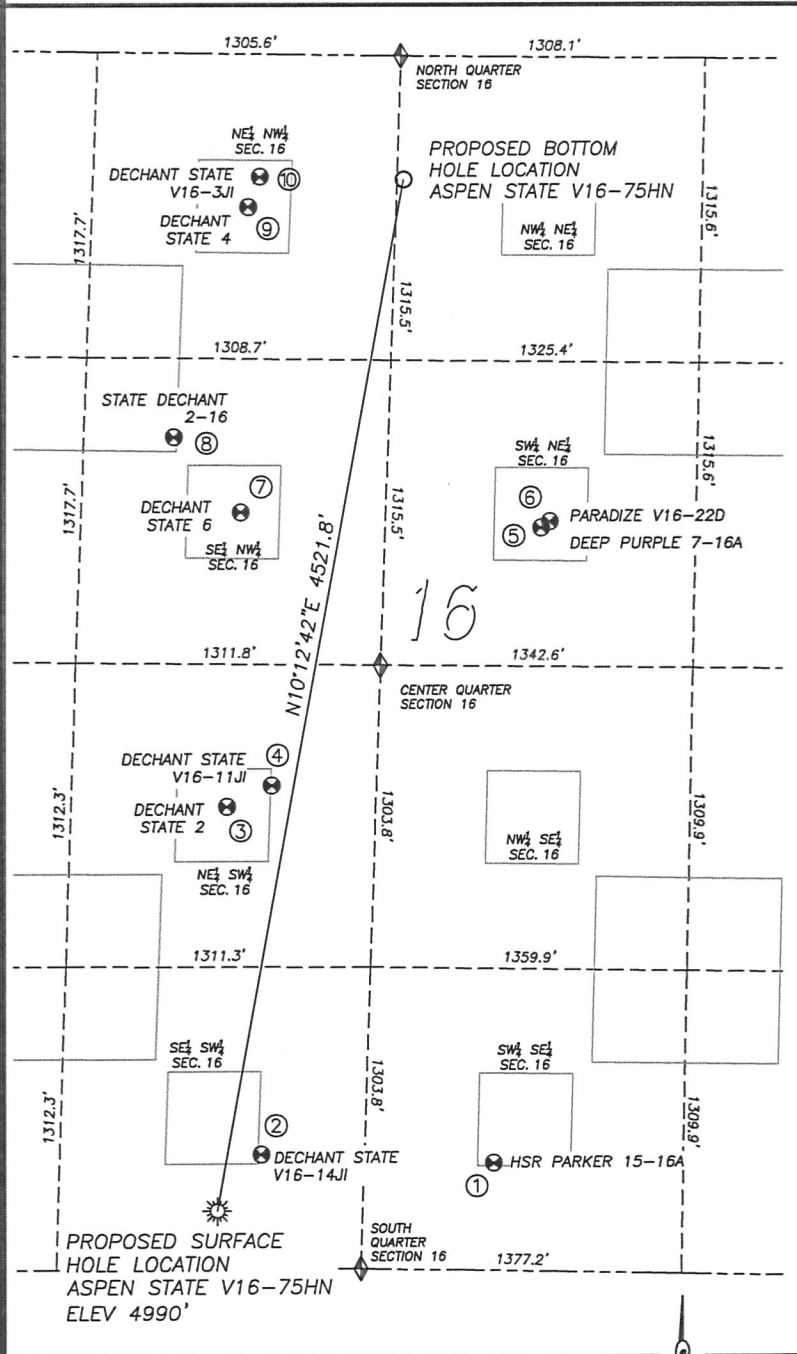


NOTICE: According to Colorado law you MUST commence any legal action based upon any defect in this W.L.C. within three years after you first discover such defect. In no event may any action based upon any such defect in this W.L.C. be commenced more than ten years from the date of the certification shown herein.

FOR AND ON BEHALF OF  
 DALEY LAND SURVEYING INC.,  
 Robert Daley, PLS 35597

SITE SKETCH ASPEN STATE V16-75HN

SECTION 16, TOWNSHIP 2 NORTH, RANGE 67 WEST OF THE 6TH PRINCIPAL MERIDIAN



- ① HSR PARKER 15-16A  
SW/SE SEC. 16  
464' FSL, 2186' FEL  
LAT. N40.13243°  
LONG. W104.89388°  
EL: 5011'  
PDOP 1.6
- ② DECHANT STATE V16-14JI  
SE/SW SEC. 16  
495' FSL, 2175' FWL  
LAT. N40.13254°  
LONG. W104.89746°  
EL: 4990'  
PDOP 1.4
- ③ DECHANT STATE 2  
NE/SW SEC. 16  
1998' FSL, 1980' FWL  
LAT. N40.13666°  
LONG. W104.89798°  
EL: 4998'  
PDOP 2.0
- ④ DECHANT STATE V16-11JI  
NE/SW SEC. 16  
2088' FSL, 2171' FWL  
LAT. N40.13691°  
LONG. W104.89729°  
EL: 4994'  
PDOP 1.5
- ⑤ DEEP PURPLE 7-16A  
SW/NE SEC. 16  
2031' FNL, 2002' FEL  
LAT. N40.13996°  
LONG. W104.89316°  
EL: 4999°  
PDOP 1.4
- ⑥ PARADIZE V16-22D  
SW/NE SEC. 16  
2005' FNL, 1965' FEL  
LAT. N40.14003°  
LONG. W104.89302°  
EL: 4998°  
PDOP 1.4
- ⑦ DECHANT STATE 6  
SE/NW SEC. 16  
1977' FNL, 1995' FWL  
LAT. N40.14015°  
LONG. W104.89777°  
EL: 4978°  
PDOP 1.9
- ⑧ STATE DECHANT 2-16  
SE/NW SEC. 16  
1657' FNL, 1695' FWL  
LAT. N40.14104°  
LONG. W104.89880°  
EL: 4979°  
PDOP 1.8
- ⑨ DECHANT STATE 4  
NE/NW SEC. 16  
660' FNL, 1976' FWL  
LAT. N40.14376°  
LONG. W104.89766°  
EL: 4980°  
PDOP 2.1
- ⑩ DECHANT STATE V16-3JI  
NE/NW SEC. 16  
530' FNL, 2021' FWL  
LAT. N40.14412°  
LONG. W104.89748°  
EL: 4979°  
PDOP 1.9

NOTES:  
 1) THIS DOES NOT REPRESENT A BOUNDARY SURVEY  
 2) THE LATITUDES AND LONGITUDES SHOWN ARE REFERENCED TO NAD83  
 3) DATUM FOR ELEVATION IS NAVD88. ELEVATIONS ARE DERIVED FROM GPS-RTK OBSERVATIONS PROCESSED THROUGH OPUS, UTILIZING THE GEOID03 MODEL.

- LEGEND
- ◆ FOUND MONUMENT AS DESCRIBED
  - ☀ PROPOSED WELL
  - ⊙ EXISTING WELL
  - BOTTOM HOLE
  - ⊘ ABANDONED WELL

