

EOG Resources, Inc - RM

Weld County, CO

Sec. 11, T11N, R63W, 6th P.M.

Bessie #9-11H

Wellbore #1

Survey: Bessie #9-11H - MWD Surveys

DDC Survey Report

12 January, 2011



Survey Certification Sheet

EOG Resource, Inc.
Company

RM-10623
Job Number

01/12/2011
Date

Sec. 11, T11N, R63W
Lease

Bessie #9-11H
Well Name

Weld, CO
County & State

Surveyed from a depth of: 1375 feet to 11665 feet MD

Type of Survey: MWD

Directional Supervisor/Surveyor: Mark Snyder

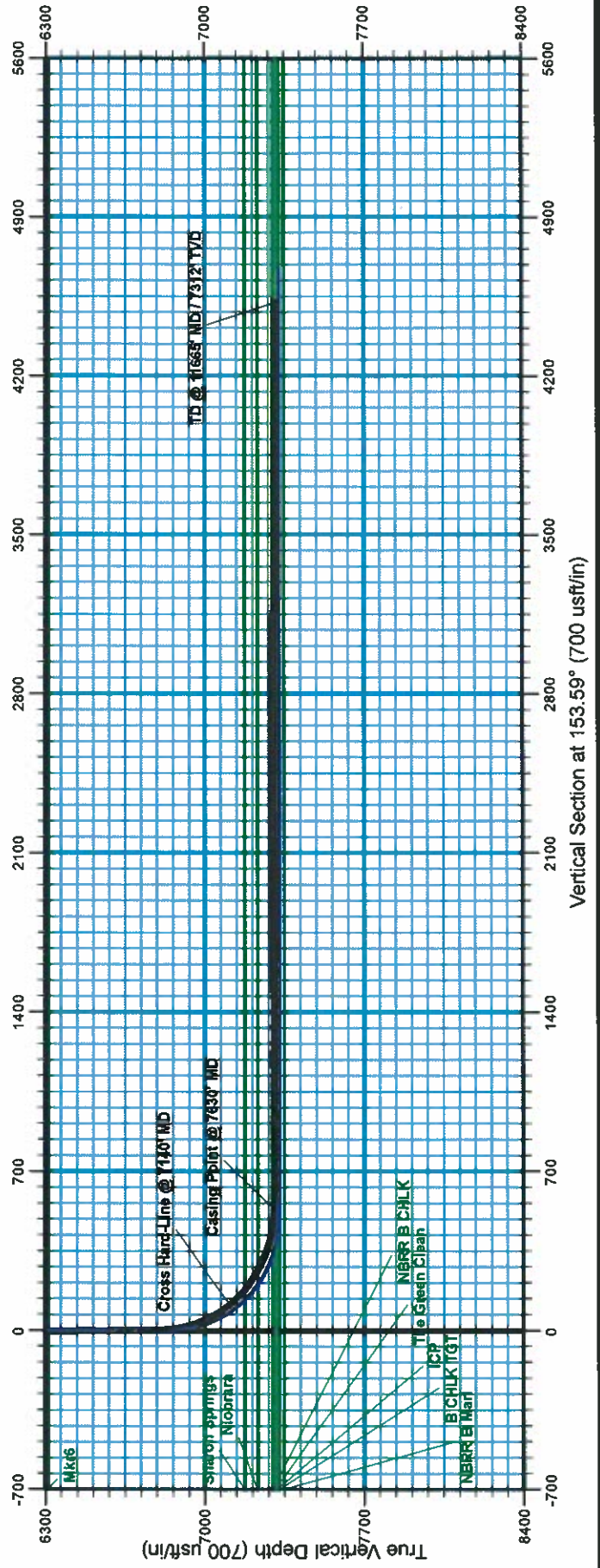
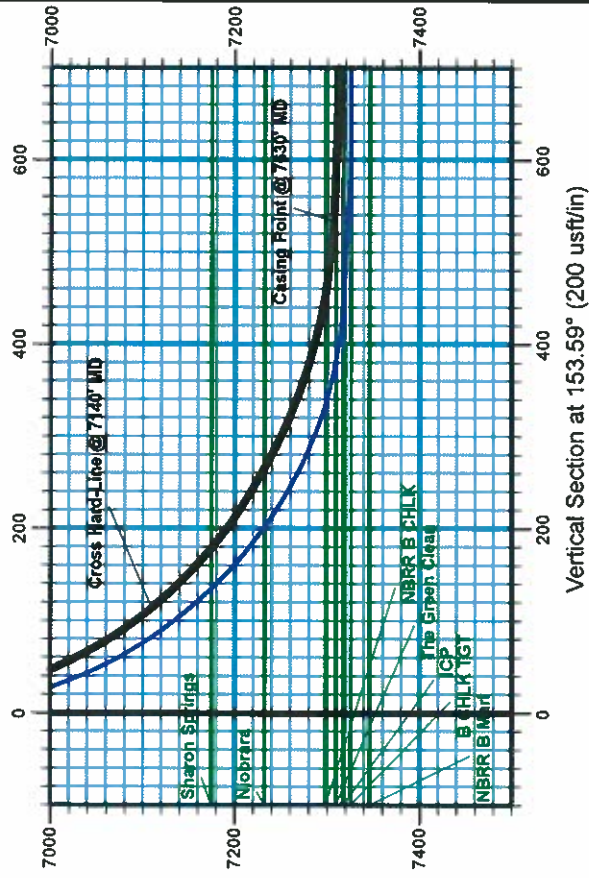
The data and calculations for this survey have been checked by me and conform to the standards and procedures set forth by **The Directional Drilling Company (DDC)**. This report represents a true and correct Directional survey of this well based on the original data obtained at the well site. Wellbore Coordinates are calculated using minimum curvature.

Digitally signed by
Larry Wright
DN: cn=Larry Wright, o,
ou,
email=larryw@directio
naldrillers.com, c=US
Date: 2011.01.12
16:26:28 -0600

Larry Wright
MWD General Manager

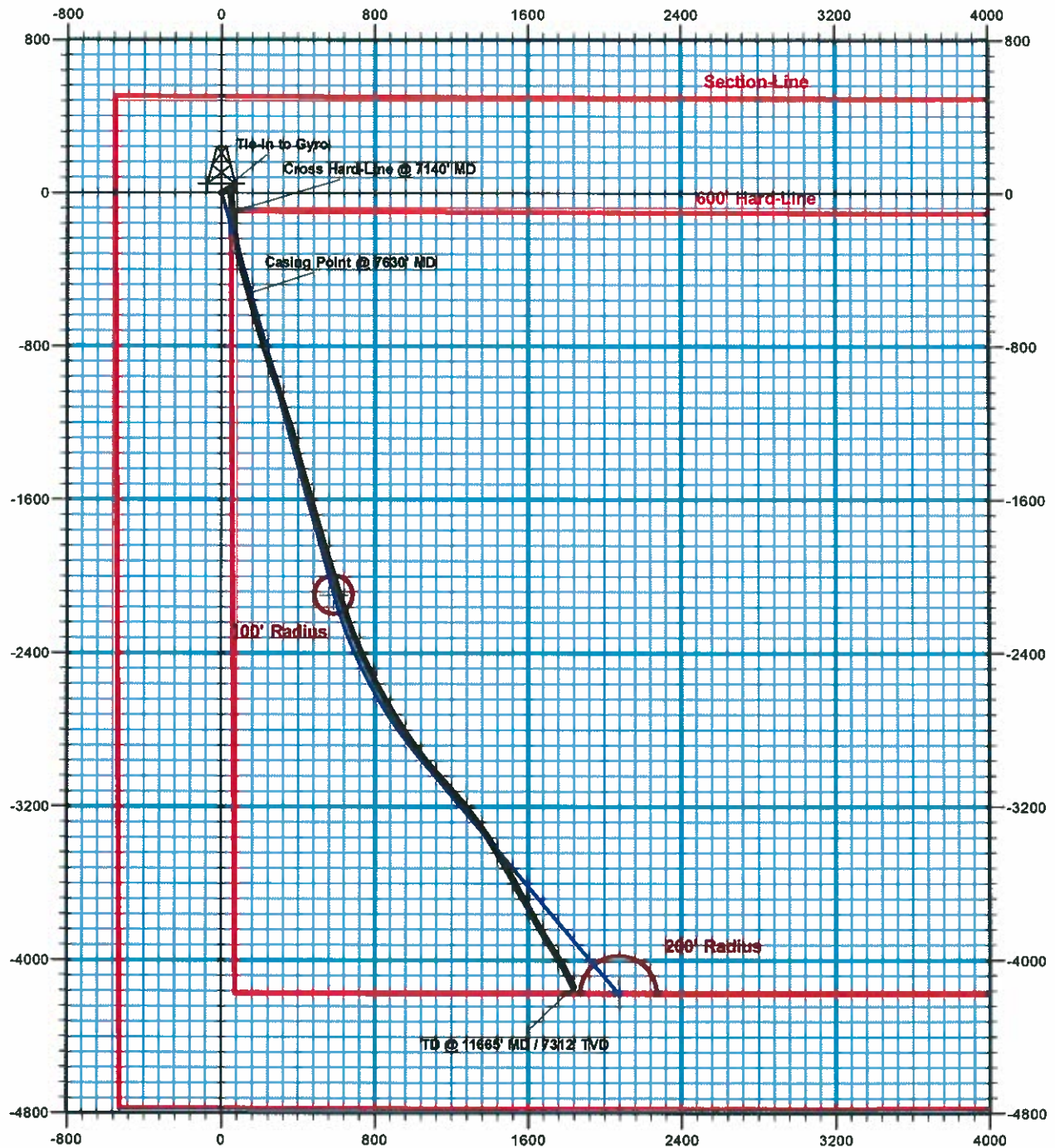


Weld County, CO
Sec. 11, T11N, R63W, 6th P.M.
Bessie #9-11H
Wellbore #1
Pre-Drill





Weld County, CO
Sec. 11, T11N, R63W, 6th P.M.
Bessie #9-11H
Wellbore #1
Pre-Drill



Company:	EOG Resources, Inc - RM	Local Co-ordinate Reference:	Well Bessie #9-11H
Project:	Weld County, CO	TVD Reference:	WELL @ 5290.0usft (SST #53)
Site:	Sec. 11, T11N, R63W, 6th P.M.	MD Reference:	WELL @ 5290.0usft (SST #53)
Well:	Bessie #9-11H	North Reference:	True
Wellbore:	Wellbore #1	Survey Calculation Method:	Minimum Curvature
Design:	Wellbore #1	Database:	EDM 5000.1 Single User Db

Project	Weld County, CO		
Map System:	US State Plane 1927 (Exact solution)	System Datum:	Mean Sea Level
Geo Datum:	NAD 1927 (NADCON CONUS)		
Map Zone:	Colorado North 501		

Site	Sec. 11, T11N, R63W, 6th P.M.		
Site Position:		Northing:	588,165.90 usft
From:	Lat/Long	Easting:	2,301,942.47 usft
Position Uncertainty:	0.0 usft	Slot Radius:	13-3/16 "
		Latitude:	40° 56' 34.080 N
		Longitude:	104° 24' 25.621 W
		Grid Convergence:	0.71 °

Well	Bessie #9-11H		
Well Position	+N/-S	0.0 usft	Northing: 588,165.89 usft
	+E/-W	0.0 usft	Easting: 2,301,942.47 usft
Position Uncertainty	0.0 usft	Wellhead Elevation:	usft
		Latitude:	40° 56' 34.080 N
		Longitude:	104° 24' 25.621 W
		Ground Level:	5,267.0 usft

Wellbore	Wellbore #1		
Magnetics	Model Name	Sample Date	Declination (°)
	IGRF2010	12/17/2010	8.78
			Dip Angle (°) 67.56
			Field Strength (nT) 53,500

Design	Wellbore #1		
Audit Notes:			
Version:	1.0	Phase:	ACTUAL
		Tie On Depth:	0.0
Vertical Section:	Depth From (TVD) (usft)	+N/-S (usft)	+E/-W (usft)
	0.0	0.0	0.0
			Direction (°) 153.59

Survey Program	Date 1/12/2011		
From (usft)	To (usft)	Survey (Wellbore)	Tool Name
1,486.0	11,665.0	Bessie #9-11H - MWD Surveys (Wellbore	MWD default
			Description MWD - Standard

Survey									
Measured Depth (usft)	Inclination (°)	Azimuth (°)	Vertical Depth (usft)	+N/-S (usft)	+E/-W (usft)	Vertical Section (usft)	Dogleg Rate (°/100usft)	Build Rate (°/100usft)	Turn Rate (°/100usft)
Tie-In to Gyro									
1,375.0	0.00	0.00	1,375.0	0.0	0.0	0.0	0.00	0.00	0.00
1,486.0	0.30	39.40	1,486.0	0.2	0.2	-0.1	0.27	0.27	0.00
1,671.0	0.80	74.90	1,671.0	0.9	1.7	-0.1	0.31	0.27	19.19
1,856.0	0.90	62.20	1,856.0	1.9	4.3	0.2	0.11	0.05	-6.86
2,043.0	0.90	54.10	2,042.9	3.5	6.8	-0.1	0.07	0.00	-4.33
2,331.0	0.80	37.40	2,330.9	6.4	9.8	-1.4	0.09	-0.03	-5.80
2,615.0	0.90	88.20	2,614.9	8.1	13.2	-1.3	0.26	0.04	17.89
2,995.0	0.80	74.50	2,994.8	8.9	18.8	0.4	0.06	-0.03	-3.61
3,376.0	0.70	58.30	3,375.8	10.8	23.3	0.7	0.06	-0.03	-4.25
3,757.0	0.60	53.10	3,756.8	13.2	26.9	0.1	0.03	-0.03	-1.36

Company:	EOG Resources, Inc - RM	Local Co-ordinate Reference:	Well Bessie #9-11H
Project:	Weld County, CO	TVD Reference:	WELL @ 5290.0usft (SST #53)
Site:	Sec. 11, T11N, R63W, 6th P.M.	MD Reference:	WELL @ 5290.0usft (SST #53)
Well:	Bessie #9-11H	North Reference:	True
Wellbore:	Wellbore #1	Survey Calculation Method:	Minimum Curvature
Design:	Wellbore #1	Database:	EDM 5000.1 Single User Db

Survey

Measured Depth (usft)	Inclination (°)	Azimuth (°)	Vertical Depth (usft)	+N/-S (usft)	+E/-W (usft)	Vertical Section (usft)	Dogleg Rate (°/100usft)	Buidl Rate (°/100usft)	Turn Rate (°/100usft)
4,135.0	1.20	49.40	4,134.7	17.0	31.5	-1.2	0.16	0.16	-0.98
4,517.0	1.90	72.60	4,516.6	21.5	40.6	-1.2	0.24	0.18	6.07
4,899.0	1.10	59.20	4,898.5	25.3	49.8	-0.5	0.23	-0.21	-3.51
4,995.0	1.10	79.30	4,994.5	25.9	51.5	-0.3	0.40	0.00	20.94
5,122.0	0.30	347.50	5,121.4	26.4	52.6	-0.3	0.90	-0.63	-72.28
5,311.0	0.50	209.70	5,310.4	26.2	52.1	-0.3	0.40	0.11	-72.91
5,628.0	0.30	262.30	5,627.4	24.9	50.6	0.2	0.13	-0.06	16.59
6,007.0	0.30	276.10	6,006.4	24.9	48.6	-0.7	0.02	0.00	3.64
6,103.0	0.30	219.90	6,102.4	24.7	48.2	-0.7	0.29	0.00	-58.54
6,198.0	0.10	300.80	6,197.4	24.6	48.0	-0.7	0.32	-0.21	85.16
6,293.0	0.20	227.10	6,292.4	24.5	47.8	-0.7	0.21	0.11	-77.58
6,388.0	0.30	154.70	6,387.4	24.2	47.7	-0.4	0.32	0.11	-76.21
6,485.0	0.30	163.50	6,484.4	23.7	47.9	0.1	0.05	0.00	9.07
6,581.0	0.50	159.60	6,580.4	23.0	48.1	0.8	0.21	0.21	-4.06
6,677.0	0.40	172.10	6,676.4	22.3	48.3	1.5	0.15	-0.10	13.02
6,770.0	0.60	167.30	6,769.4	21.5	48.5	2.3	0.22	0.22	-5.16
6,802.0	2.30	185.40	6,801.4	20.7	48.5	3.0	5.44	5.31	56.56
6,835.0	5.40	179.60	6,834.3	18.5	48.4	5.0	9.46	9.39	-17.58
6,867.0	9.00	173.80	6,866.1	14.5	48.7	8.7	11.46	11.25	-18.13
6,898.0	12.80	173.70	6,896.5	8.7	49.3	14.2	12.26	12.26	-0.32
6,930.0	15.80	172.60	6,927.5	0.8	50.3	21.6	9.41	9.38	-3.44
6,961.0	19.70	173.80	6,957.0	-8.5	51.4	30.5	12.64	12.58	3.87
6,993.0	23.40	176.10	6,986.8	-20.2	52.4	41.4	11.86	11.56	7.19
7,025.0	27.30	178.20	7,015.7	-33.9	53.1	54.0	12.51	12.19	6.56
7,057.0	31.70	177.90	7,043.5	-49.7	53.6	68.3	13.76	13.75	-0.94
7,089.0	35.50	176.10	7,070.2	-67.4	54.5	84.6	12.28	11.88	-5.63
7,121.0	39.50	175.10	7,095.6	-86.8	56.0	102.6	12.64	12.50	-3.13
Cross Hard-Line @ 7140' MD									
7,140.2	41.60	174.08	7,110.2	-99.2	57.2	114.3	11.48	10.95	-5.29
7,152.0	42.90	173.50	7,118.9	-107.1	58.1	121.7	11.48	10.99	-4.95
7,184.0	45.80	172.60	7,141.8	-129.3	60.8	142.8	9.27	9.06	-2.81
7,215.0	49.70	173.10	7,162.6	-152.0	63.7	164.5	12.64	12.58	1.61
7,248.0	54.10	173.50	7,183.0	-177.8	66.7	188.9	13.37	13.33	1.21
7,280.0	57.90	173.30	7,200.9	-204.2	69.7	213.9	11.89	11.88	-0.63
7,312.0	60.00	172.40	7,217.4	-231.4	73.1	239.8	6.99	6.56	-2.81
7,344.0	62.30	171.00	7,232.8	-259.1	77.2	266.4	8.14	7.19	-4.38
7,376.0	64.80	168.70	7,247.1	-287.3	82.2	293.9	10.12	7.81	-7.19
7,408.0	67.70	166.10	7,260.0	-315.9	88.6	322.3	11.72	9.06	-8.13
7,439.0	70.70	164.70	7,271.0	-343.9	95.9	350.7	10.56	9.68	-4.52
7,470.0	73.70	164.50	7,280.4	-372.4	103.8	379.7	9.70	9.68	-0.65
7,502.0	76.30	164.90	7,288.7	-402.2	111.9	410.0	8.21	8.13	1.25
7,534.0	78.80	164.90	7,295.6	-432.4	120.1	440.6	7.81	7.81	0.00
7,565.0	81.70	165.10	7,300.9	-461.9	128.0	470.6	9.38	9.35	0.65

Company:	EOG Resources, Inc - RM	Local Co-ordinate Reference:	Well Bessie #9-11H
Project:	Weld County, CO	TVD Reference:	WELL @ 5290.0usft (SST #53)
Site:	Sec. 11, T11N, R63W, 6th P.M.	MD Reference:	WELL @ 5290.0usft (SST #53)
Well:	Bessie #9-11H	North Reference:	True
Wellbore:	Wellbore #1	Survey Calculation Method:	Minimum Curvature
Design:	Wellbore #1	Database:	EDM 5000.1 Single User Db

Survey

Measured Depth (usft)	Inclination (°)	Azimuth (°)	Vertical Depth (usft)	+N/-S (usft)	+E/-W (usft)	Vertical Section (usft)	Dogleg Rate (°/100usft)	Build Rate (°/100usft)	Turn Rate (°/100usft)
7,581.0	83.50	164.90	7,302.9	-477.2	132.1	486.1	11.32	11.25	-1.25
Casing Point @ 7630' MD									
7,630.0	86.57	165.41	7,307.2	-524.4	144.6	534.0	6.35	6.27	1.05
7,648.0	87.70	165.60	7,308.1	-541.8	149.1	551.5	6.35	6.27	1.04
7,680.0	87.70	165.10	7,309.4	-572.7	157.2	582.9	1.56	0.00	-1.56
7,711.0	87.80	164.90	7,310.6	-602.6	165.2	613.2	0.72	0.32	-0.65
7,743.0	89.00	163.50	7,311.5	-633.4	173.9	644.7	5.76	3.75	-4.38
7,775.0	89.40	164.70	7,311.9	-664.2	182.7	676.1	3.95	1.25	3.75
7,806.0	91.40	163.30	7,311.7	-694.0	191.2	706.6	7.88	6.45	-4.52
7,838.0	91.70	164.20	7,310.8	-724.7	200.2	738.1	2.96	0.94	2.81
7,870.0	91.20	163.10	7,310.0	-755.4	209.2	769.6	3.77	-1.56	-3.44
7,901.0	91.10	162.60	7,309.4	-785.0	218.3	800.2	1.64	-0.32	-1.61
7,933.0	90.80	163.60	7,308.9	-815.6	227.6	831.7	3.26	-0.94	3.13
7,964.0	90.70	163.30	7,308.5	-845.3	236.4	862.3	1.02	-0.32	-0.97
7,996.0	91.20	163.50	7,307.9	-876.0	245.6	893.8	1.68	1.56	0.63
8,028.0	89.40	162.10	7,307.8	-906.6	255.0	925.4	7.13	-5.63	-4.38
8,060.0	89.70	160.80	7,308.0	-936.9	265.2	957.1	4.17	0.94	-4.06
8,091.0	91.30	161.50	7,307.7	-966.2	275.2	987.8	5.63	5.16	2.26
8,123.0	91.30	162.10	7,307.0	-996.6	285.2	1,019.5	1.87	0.00	1.88
8,154.0	91.80	161.40	7,306.2	-1,026.0	294.9	1,050.1	2.77	1.61	-2.26
8,187.0	91.10	161.90	7,305.3	-1,057.4	305.3	1,082.8	2.61	-2.12	1.52
8,219.0	90.00	161.90	7,305.0	-1,087.8	315.3	1,114.5	3.44	-3.44	0.00
8,250.0	90.00	161.00	7,305.0	-1,117.2	325.1	1,145.2	2.90	0.00	-2.90
8,282.0	90.10	161.50	7,305.0	-1,147.5	335.4	1,176.9	1.59	0.31	1.56
8,314.0	90.10	161.70	7,305.0	-1,177.8	345.5	1,208.6	0.62	0.00	0.63
8,345.0	90.30	160.60	7,304.8	-1,207.2	355.5	1,239.3	3.61	0.65	-3.55
8,377.0	90.40	162.90	7,304.6	-1,237.5	365.5	1,271.0	7.19	0.31	7.19
8,408.0	89.80	164.70	7,304.6	-1,267.3	374.2	1,301.5	6.12	-1.94	5.81
8,440.0	89.90	165.40	7,304.7	-1,298.2	382.5	1,332.9	2.21	0.31	2.19
8,471.0	89.70	165.20	7,304.8	-1,328.2	390.3	1,363.2	0.91	-0.65	-0.65
8,503.0	89.80	163.60	7,304.9	-1,359.0	398.9	1,394.6	5.01	0.31	-5.00
8,535.0	90.40	164.90	7,304.9	-1,389.8	407.6	1,426.1	4.47	1.88	4.06
8,567.0	90.40	164.00	7,304.6	-1,420.7	416.2	1,457.5	2.81	0.00	-2.81
8,599.0	91.00	165.20	7,304.3	-1,451.5	424.7	1,488.9	4.19	1.88	3.75
8,631.0	91.40	165.20	7,303.6	-1,482.4	432.9	1,520.3	1.25	1.25	0.00
8,662.0	89.70	163.80	7,303.3	-1,512.3	441.1	1,550.7	7.10	-5.48	-4.52
8,694.0	90.00	164.50	7,303.4	-1,543.1	449.9	1,582.2	2.38	0.94	2.19
8,726.0	90.30	164.20	7,303.3	-1,573.9	458.5	1,613.6	1.33	0.94	-0.94
8,757.0	89.70	163.80	7,303.3	-1,603.7	467.1	1,644.1	2.33	-1.94	-1.29
8,789.0	89.60	164.20	7,303.5	-1,634.5	475.9	1,675.6	1.29	-0.31	1.25
8,821.0	89.90	162.90	7,303.6	-1,665.2	484.9	1,707.1	4.17	0.94	-4.06
8,852.0	90.00	163.50	7,303.6	-1,694.8	493.9	1,737.6	1.96	0.32	1.94
8,884.0	89.80	162.40	7,303.7	-1,725.4	503.3	1,769.2	3.49	-0.63	-3.44
8,947.0	90.30	164.90	7,303.6	-1,785.9	521.0	1,831.2	4.05	0.79	3.97

Company:	EOG Resources, Inc - RM	Local Co-ordinate Reference:	Well Bessie #9-11H
Project:	Weld County, CO	TVD Reference:	WELL @ 5290.0usft (SST #53)
Site:	Sec. 11, T11N, R63W, 6th P.M.	MD Reference:	WELL @ 5290.0usft (SST #53)
Well:	Bessie #9-11H	North Reference:	True
Wellbore:	Wellbore #1	Survey Calculation Method:	Minimum Curvature
Design:	Wellbore #1	Database:	EDM 5000.1 Single User Db

Survey

Measured Depth (usft)	Inclination (°)	Azimuth (°)	Vertical Depth (usft)	+N/-S (usft)	+E/-W (usft)	Vertical Section (usft)	Dogleg Rate (°/100usft)	Build Rate (°/100usft)	Turn Rate (°/100usft)
9,010.0	90.20	162.90	7,303.4	-1,846.4	538.5	1,893.2	3.18	-0.16	-3.17
9,073.0	90.20	162.90	7,303.2	-1,906.6	557.0	1,955.4	0.00	0.00	0.00
9,136.0	89.30	161.00	7,303.4	-1,966.5	576.5	2,017.7	3.34	-1.43	-3.02
9,199.0	91.80	162.20	7,302.8	-2,026.3	596.4	2,080.1	4.40	3.97	1.90
9,263.0	90.60	163.30	7,301.5	-2,087.4	615.4	2,143.3	2.54	-1.88	1.72
9,326.0	90.90	162.40	7,300.7	-2,147.6	634.0	2,205.4	1.51	0.48	-1.43
9,389.0	90.10	160.80	7,300.1	-2,207.4	653.8	2,267.8	2.84	-1.27	-2.54
9,453.0	90.80	159.40	7,299.6	-2,267.5	675.6	2,331.4	2.45	1.09	-2.19
9,516.0	88.90	155.90	7,299.8	-2,325.8	699.6	2,394.2	6.32	-3.02	-5.56
9,579.0	90.00	157.30	7,300.4	-2,383.6	724.6	2,457.1	2.83	1.75	2.22
9,643.0	89.10	155.00	7,300.9	-2,442.1	750.5	2,521.1	3.86	-1.41	-3.59
9,707.0	90.00	154.00	7,301.4	-2,499.9	778.0	2,585.0	2.10	1.41	-1.56
9,771.0	89.40	152.40	7,301.7	-2,557.0	806.9	2,649.0	2.67	-0.94	-2.50
9,834.0	90.70	151.00	7,301.7	-2,612.5	836.7	2,712.0	3.03	2.06	-2.22
9,897.0	90.50	149.40	7,301.0	-2,667.1	868.1	2,774.9	2.56	-0.32	-2.54
9,960.0	89.50	147.50	7,301.0	-2,720.8	901.0	2,837.6	3.41	-1.59	-3.02
10,025.0	89.40	147.30	7,301.6	-2,775.6	936.0	2,902.2	0.34	-0.15	-0.31
10,088.0	91.00	146.40	7,301.4	-2,828.3	970.5	2,964.8	2.91	2.54	-1.43
10,151.0	90.00	145.00	7,300.9	-2,880.4	1,006.0	3,027.2	2.73	-1.59	-2.22
10,183.0	90.20	143.40	7,300.8	-2,906.3	1,024.7	3,058.8	5.04	0.63	-5.00
10,215.0	88.80	143.10	7,301.1	-2,932.0	1,043.8	3,090.3	4.47	-4.38	-0.94
10,246.0	86.70	141.00	7,302.3	-2,956.4	1,062.9	3,120.6	9.58	-6.77	-6.77
10,277.0	86.10	139.70	7,304.2	-2,980.2	1,082.6	3,150.7	4.61	-1.94	-4.19
10,309.0	86.10	139.00	7,306.4	-3,004.4	1,103.4	3,181.7	2.18	0.00	-2.19
10,341.0	87.70	138.30	7,308.2	-3,028.4	1,124.5	3,212.5	5.46	5.00	-2.19
10,373.0	89.60	139.00	7,308.9	-3,052.4	1,145.7	3,243.4	6.33	5.94	2.19
10,436.0	89.30	137.60	7,309.5	-3,099.5	1,187.6	3,304.2	2.27	-0.48	-2.22
10,499.0	90.60	139.40	7,309.6	-3,146.6	1,229.3	3,365.0	3.52	2.06	2.86
10,563.0	90.30	141.10	7,309.1	-3,195.8	1,270.2	3,427.3	2.70	-0.47	2.66
10,627.0	90.00	142.00	7,308.9	-3,246.0	1,310.0	3,489.9	1.48	-0.47	1.41
10,691.0	90.00	143.60	7,308.9	-3,296.9	1,348.7	3,552.8	2.50	0.00	2.50
10,754.0	90.10	148.20	7,308.8	-3,349.1	1,384.0	3,615.2	7.30	0.16	7.30
10,785.0	90.10	148.00	7,308.8	-3,375.4	1,400.4	3,646.0	0.65	0.00	-0.65
10,817.0	90.00	147.60	7,308.8	-3,402.5	1,417.5	3,677.9	1.29	-0.31	-1.25
10,848.0	90.10	148.50	7,308.7	-3,428.8	1,433.9	3,708.7	2.92	0.32	2.90
10,879.0	90.00	149.40	7,308.7	-3,455.4	1,449.9	3,739.6	2.92	-0.32	2.90
10,911.0	90.00	150.50	7,308.7	-3,483.1	1,465.9	3,771.6	3.44	0.00	3.44
10,974.0	90.30	150.50	7,308.5	-3,537.9	1,496.9	3,834.5	0.48	0.48	0.00
11,006.0	89.80	151.00	7,308.5	-3,565.8	1,512.6	3,866.4	2.21	-1.56	1.56
11,038.0	90.80	152.90	7,308.3	-3,594.0	1,527.6	3,898.4	6.71	3.13	5.94
11,069.0	90.00	151.00	7,308.1	-3,621.4	1,542.2	3,929.4	6.65	-2.58	-6.13
11,101.0	89.60	150.30	7,308.2	-3,649.3	1,557.9	3,961.4	2.52	-1.25	-2.19
11,133.0	89.10	150.10	7,308.6	-3,677.1	1,573.8	3,993.3	1.68	-1.56	-0.63

Company:	EOG Resources, Inc - RM	Local Co-ordinate Reference:	Well Bessie #9-11H
Project:	Weld County, CO	TVD Reference:	WELL @ 5290.0usft (SST #53)
Site:	Sec. 11, T11N, R63W, 6th P.M.	MD Reference:	WELL @ 5290.0usft (SST #53)
Well:	Bessie #9-11H	North Reference:	True
Wellbore:	Wellbore #1	Survey Calculation Method:	Minimum Curvature
Design:	Wellbore #1	Database:	EDM 5000.1 Single User Db

Survey

Measured Depth (usft)	Inclination (°)	Azimuth (°)	Vertical Depth (usft)	+N/-S (usft)	+E/-W (usft)	Vertical Section (usft)	Dogleg Rate (°/100usft)	Build Rate (°/100usft)	Turn Rate (°/100usft)
11,164.0	89.20	151.20	7,309.1	-3,704.1	1,589.0	4,024.2	3.56	0.32	3.55
11,197.0	89.90	150.80	7,309.3	-3,732.9	1,605.0	4,057.2	2.44	2.12	-1.21
11,228.0	89.40	151.70	7,309.5	-3,760.1	1,619.9	4,088.2	3.32	-1.61	2.90
11,260.0	90.10	151.20	7,309.6	-3,788.2	1,635.2	4,120.2	2.69	2.19	-1.56
11,292.0	89.60	148.50	7,309.7	-3,815.9	1,651.2	4,152.1	8.58	-1.56	-8.44
11,355.0	90.00	149.20	7,310.0	-3,869.8	1,683.8	4,214.9	1.28	0.63	1.11
11,387.0	89.30	148.50	7,310.1	-3,897.2	1,700.4	4,246.8	3.09	-2.19	-2.19
11,418.0	89.70	147.50	7,310.4	-3,923.5	1,716.8	4,277.6	3.47	1.29	-3.23
11,450.0	89.40	147.60	7,310.7	-3,950.5	1,734.0	4,309.4	0.99	-0.94	0.31
11,513.0	89.60	150.10	7,311.2	-4,004.4	1,766.5	4,372.2	3.98	0.32	3.97
11,576.0	89.60	152.60	7,311.7	-4,059.7	1,796.8	4,435.2	3.97	0.00	3.97
11,618.0	90.00	154.10	7,311.8	-4,097.2	1,815.6	4,477.2	3.70	0.95	3.57
TD @ 11665' MD / 7312' TVD									
11,665.0	90.00	154.10	7,311.8	-4,139.5	1,836.1	4,524.2	0.00	0.00	0.00

Survey Annotations

Measured Depth (usft)	Vertical Depth (usft)	Local Coordinates		Comment
		+N/-S (usft)	+E/-W (usft)	
1,375.0	1,375.0	0.0	0.0	Tie-In to Gyro
7,140.2	7,110.2	-99.2	57.2	Cross Hard-Line @ 7140' MD
7,630.0	7,307.2	-524.4	144.6	Casing Point @ 7630' MD
11,665.0	7,311.8	-4,139.5	1,836.1	TD @ 11665' MD / 7312' TVD

Checked By: _____	Approved By: _____	Date: _____
-------------------	--------------------	-------------