

# Downhole Schematic for N Parachute WF03B-27 K22 596



Project : North Piceance

API # : 05045189140000

Surface Location : NESW Sec 22 T5S - R96W 6th PM

Area : N Parachute

County :

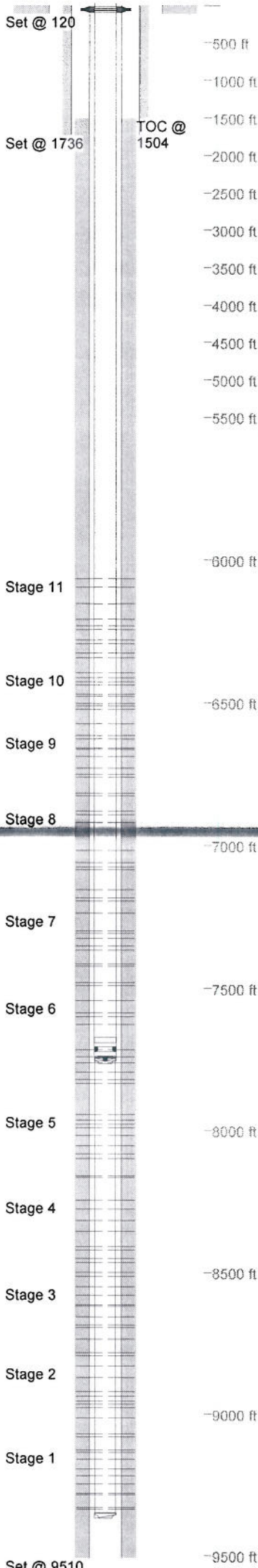
BHL : NENW-27-5S-96 W 6th PM

As Of : 07/27/2011

GL : 6527.0 ft

KB to GL : 23.0 ft

KB : 6550.0 ft



Section	Hole	Casing	Mass	Set At	Length	Thread	Grade	Description
<b>Casing Details</b>								
Conductor	26.000	16	42.09	120	120		A52A	Line Pipe
<b>Surface</b>	12.250	9.625	0	1,736	2	ST&C	K55	Float Shoe
		9.625	36	1,734	43	ST&C	J55	Casing Shoe Jt
		9.625	36	1,691	44	LT&C	J55	Casing - SB
		9.625	36	1,647	1,619	LT&C	J55	Casing
		9.625	36	29	5	ST&C	J55	Well head
		9.625	36	24	29	ST&C	J55	Landing Jt
<b>Production</b>	8.750	4.50	0	9,510	2	Butt		Float Shoe
		4.50	11.6	9,509	28	Butt	M80	Shoe Joint
		4.50	0	9,480	2	Butt	M80	Float Collar
		4.50	11.6	9,479	1,431	Butt	M80	Joints Casing
		4.50	11.6	8,048	23	Butt	M80	Marker Joint
		4.50	11.6	8,025	2,597	Butt	M80	Joints Casing
		4.50	11.6	5,428	22	Butt	M80	Marker Joints
		4.50	11.5	5,405	5,402	Butt	M80	Joints Casing

Section	Sequence	Top	Density	Blend / Additives
<b>Cement Details</b>				
Conductor	Tail	0	13.0	Control Set C / 1/4 lbs/sk Polly
Surface	Lead	0	12.5	Class G / G+2.0%D079+0.2%D46+0.25 pps D29
	Tail	1,237	14.0	Class G / G+1%D79+0.2%D46+0.25pps D29
<b>Production</b>	Scavenger	0	8.3	20 BBL - Cw7 /
	Scavenger	0	12.0	30 BBL - Mud PushII /
	Lead	1,504	12.5	Pozzolan "G" /
	Tail	4,413	13.0	Poz/G+5%D44+0.2%D46+2%D79+1.3%D13+0.5%D182+0.25%D029 Pozzolan "A" / Rockies +35%D044+3%D182+0.75%D112+0.35%D201+0.2%D046+0.25%D029

O.D.	Length	Depth	Description
0.000	22.00	22.00	KB
7.063	0.80	22.80	7 1/16" Woodgroup tbg. hanger
3.063	7,648.57	7,671.37	245 jts. 2 3/8" L80 4.7# USA (TENARIS) production tbg.
3.063	1.10	7,672.47	2 3/8" flag nipple
3.063	31.42	7,703.89	1 jt. 2 3/8" L80 4.7# USA (TENARIS) production tbg.
3.063	1.10	7,704.99	2 3/8" Seating nipple
3.063	31.30	7,736.29	1 jt. 2 3/8" L80 4.7# USA (TENARIS) production tbg.
3.063	0.79	7,737.08	Magnum burst disc
3.063	8.10	7,745.18	8" P110 slotted pup jt.
2.875	0.85	7,746.03	2 3/8" EUE box to 2 7/8" flush jt. pin
2.875	1,603.07	9,349.10	49 jts. 2 7/8" FJ J55 6.17# tbg. Bulldog thread
2.875	1.20	9,350.30	2 7/8" flush jt. box to 2 3/8" EUE pin
3.063	0.75	9,351.05	Magnum burst disc

Stage	Date	From	To	Shots	8,421	8,422	3
<b>Stage 1</b>							
	07/05/2011	9,336	9,337	3	8,409	8,410	3
		9,330	9,331	3	8,356	8,357	3
		9,285	9,286	3	8,317	8,318	3
		9,280	9,281	3	8,277	8,278	3
		9,247	9,248	3	8,245	8,246	3
		9,218	9,219	3			
		9,194	9,195	3			
		9,159	9,160	3			
		9,135	9,136	3	8,099	8,100	3
		9,127	9,128	3	8,083	8,084	3
<b>Stage 10</b>							
	07/19/2011	6,574	6,575	3	8,054	8,055	3
		6,523	6,524	3	8,018	8,019	3
		6,512	6,513	3	7,991	7,992	3
		6,503	6,504	3	7,979	7,980	3
		6,478	6,479	3	7,964	7,965	3
		6,470	6,471	3	7,945	7,946	3
		6,438	6,439	3			
		6,427	6,428	3			
		6,413	6,414	3			
		6,395	6,396	3			
<b>Stage 6</b>							
	07/21/2011	6,343	6,344	3	7,761	7,762	3
		6,326	6,327	3	7,740	7,741	3
		6,293	6,294	3	7,715	7,716	3
		6,281	6,282	3	7,626	7,627	3
		6,244	6,245	3	7,599	7,600	3
		6,232	6,233	3	7,586	7,587	3
		6,208	6,209	3	7,543	7,544	3
		6,153	6,154	3			
		6,096	6,097	3			
		6,066	6,067	3			
<b>Stage 2</b>							
	07/07/2011	9,080	9,081	3	7,366	7,367	3
		9,070	9,071	3	7,352	7,353	3
		9,013	9,014	3	7,325	7,326	3
		8,977	8,978	3	7,307	7,308	3
		8,965	8,966	3	7,299	7,300	3
		8,954	8,955	3	7,237	7,238	3
		8,936	8,937	3			
		8,920	8,921	3			
		8,871	8,872	3			
		8,830	8,831	3			
<b>Stage 3</b>							
	07/08/2011	8,793	8,794	3	7,076	7,077	3
		8,782	8,783	3	7,060	7,061	3
		8,734	8,735	3	7,017	7,018	3
		8,693	8,694	3	6,920	6,921	3
		8,684	8,685	3	6,893	6,894	3
		8,655	8,656	3	6,880	6,881	3
		8,618	8,619	3			
		8,613	8,614	3			
		8,580	8,581	3			
		8,550	8,551	3			
<b>Stage 4</b>							
	07/11/2011	8,514	8,515	3	6,730	6,731	3
		8,500	8,501	3	6,688	6,689	3
		8,465	8,466	3	6,663	6,664	3
		8,451	8,452	3	6,658	6,659	3
					6,627	6,628	3
					6,615	6,616	3

Stage	Date	From	To	Shots	6,826	6,827	3
<b>Stage 11</b>							
	07/18/2011	6,818	6,819	3	6,817	6,818	3
		6,761	6,762	3	6,761	6,762	3
		6,751	6,752	3	6,751	6,752	3
		6,730	6,731	3			
		6,688	6,689	3			
		6,663	6,664	3			
		6,658	6,659	3			
		6,627	6,628	3			
		6,615	6,616	3			
<b>Stage 9</b>							
	07/19/2011	6,615	6,616	3	6,826	6,827	3
		6,575	6,576	3	6,817	6,818	3
		6,550	6,551	3	6,817	6,818	3
		6,523	6,524	3	6,761	6,762	3
		6,512	6,513	3	6,751	6,752	3
		6,503	6,504	3	6,730	6,731	3
		6,478	6,479	3	6,688	6,689	3
		6,470	6,471	3	6,663	6,664	3
		6,438	6,439	3	6,658	6,659	3
		6,427	6,428	3	6,627	6,628	3
		6,413	6,414	3	6,615	6,616	3
		6,395	6,396	3			
<b>Stage 10</b>							
	07/20/2011	6,395	6,396	3	6,826	6,827	3
		6,350	6,351	3	6,817	6,818	3
		6,330	6,331	3	6,817	6,818	3
		6,303	6,304	3	6,761	6,762	3
		6,285	6,286	3	6,751	6,752	3
		6,280	6,281	3	6,730	6,731	3
		6,247	6,248	3	6,688	6,689	3
		6,218	6,219	3	6,663	6,664	3
		6,194	6,195	3	6,658	6,659	3
		6,159	6,160	3	6,627	6,628	3
		6,135	6,136	3	6,615	6,616	3
		6,127	6,128	3			
<b>Stage 7</b>							
	07/13/2011	7,834	7,835	3	6,826	6,827	3
		7,820	7,821	3	6,817	6,818	3
		7,794	7,795	3	6,817	6,818	3
		7,761	7,762	3	6,761	6,762	3
		7,740	7,741	3	6,751	6,752	3
		7,715	7,716	3	6,730	6,731	3
		7,626	7,627	3	6,688	6,689	3
		7,599	7,600	3	6,663	6,664	3
		7,586	7,587	3	6,658	6,659	3
		7,543	7,544	3	6,627	6,628	3
		7,545	7,546	3	6,615	6,616	3
<b>Stage 6</b>							
	07/13/2011	7,834	7,835	3	6,826	6,827	3
		7,820	7,821	3	6,817	6,818	3
		7,794	7,795	3	6,817	6,818	3
		7,761	7,762	3	6,761	6,762	3
		7,740	7,741	3	6,751	6,752	3
		7,715	7,716	3	6,730	6,731	3
		7,626	7,627	3	6,688	6,689	3
		7,599	7,600	3	6,663	6,664	3