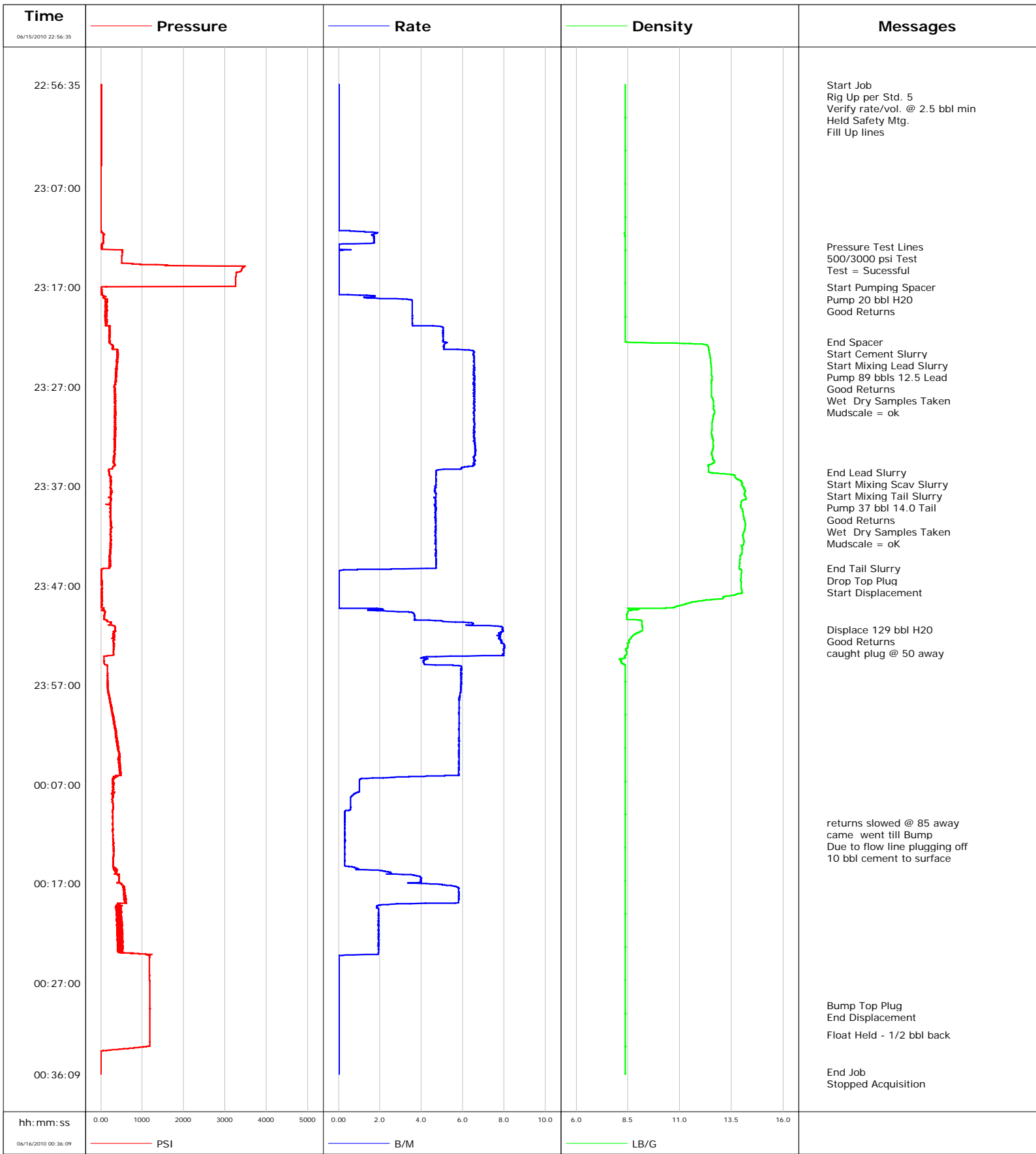


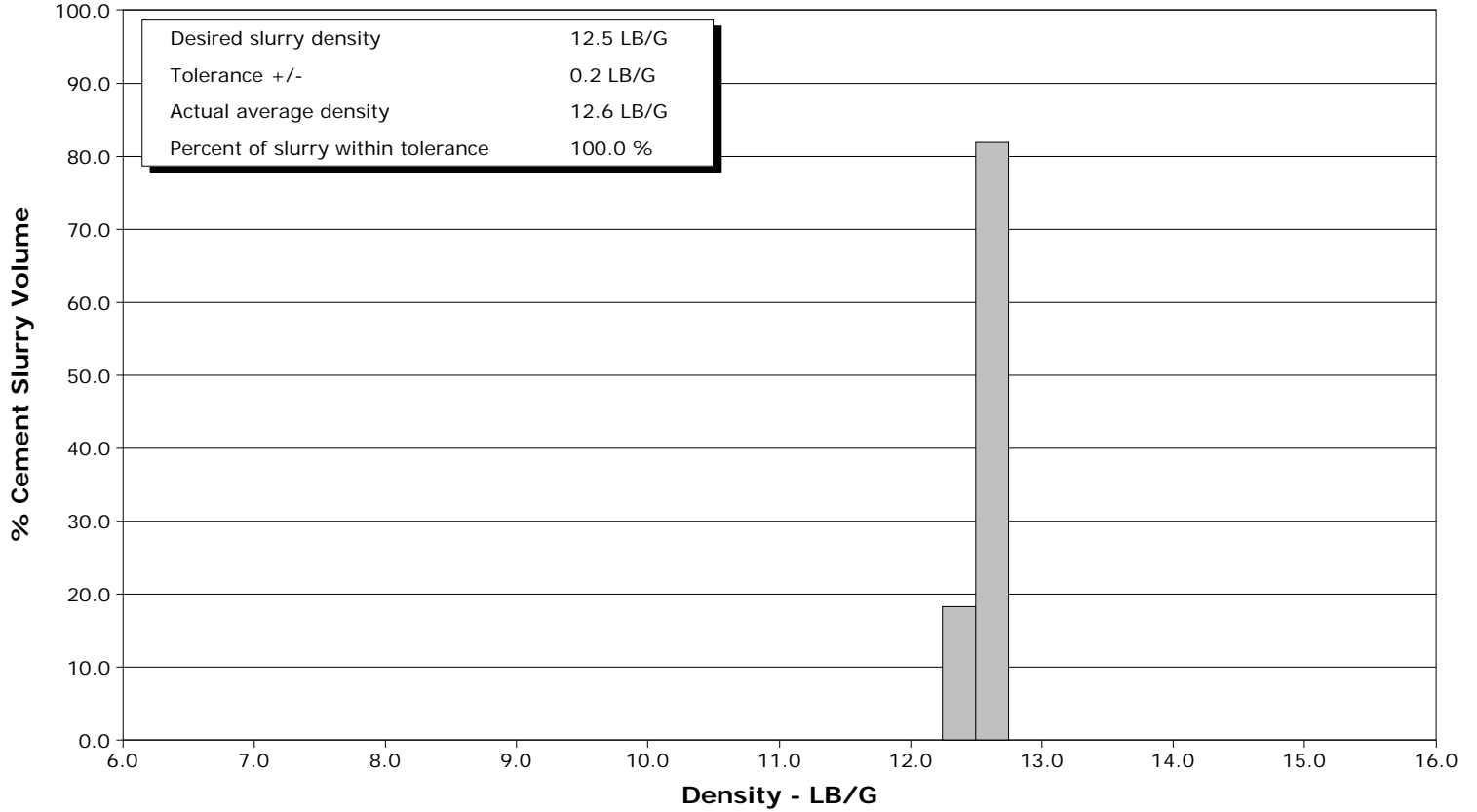
Well	WF05C-22 K22 596	Client	Encana
Field	N. Parachute	SIR No.	347753
Engineer	B. Farnham	Job Type	9 5/8" Surface
Country	United States	Job Date	6/15/2010



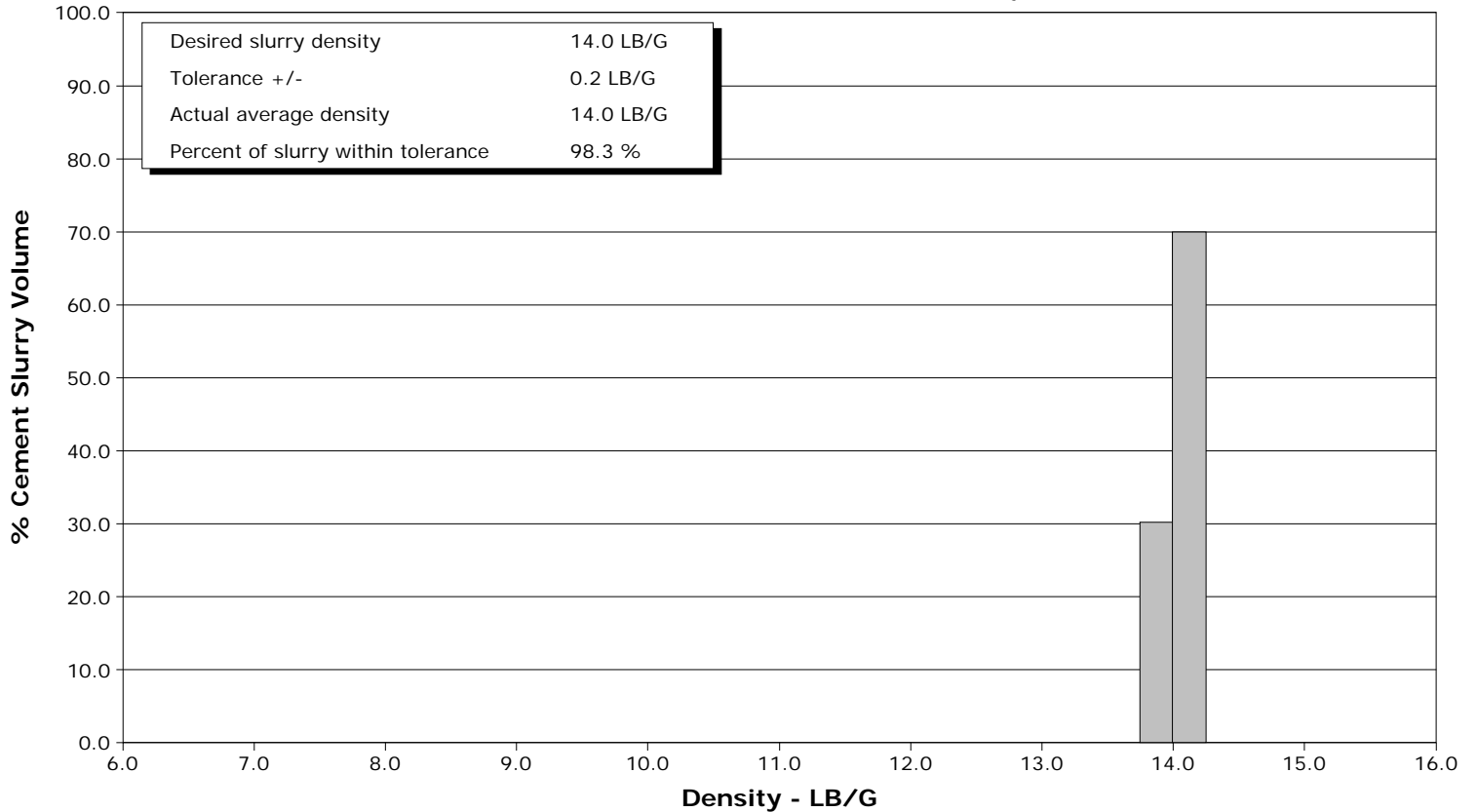
Well WF05C-22 K22 596
Field N. Parachute
Engineer B. Farnham
Country United States

Client Encana
SIR No. 347753
Job Type 9 5/8" Surface
Job Date 6/15/2010

Lead Slurry - 06/15/2010 23:22:57 to 06/15/2010 23:35:36



Tail Slurry - 06/15/2010 23:36:30 to 06/15/2010 23:45:16



Well		Field		Job Start	Customer		Job Number
WF05C-22 K22 596 WF05C-22 K22 596		N. Parachute		Jun/15/2010	Encana		347753
Date	Time 24-hr clock	Treating Pressure PSI	Flow Rate B/M	Density LB/G	Volume BBL	Message	
06/15/2010	23:02:51	1	0.0	8.37	0.0		
06/15/2010	23:03:21	1	0.0	8.37	0.0		
06/15/2010	23:03:51	1	0.0	8.37	0.0		
06/15/2010	23:04:21	1	0.0	8.37	0.0		
06/15/2010	23:04:51	-3	0.0	8.37	0.0		
06/15/2010	23:05:21	-2	0.0	8.37	0.0		
06/15/2010	23:05:51	-2	0.0	8.37	0.0		
06/15/2010	23:06:21	-2	0.0	8.37	0.0		
06/15/2010	23:06:51	-2	0.0	8.37	0.0		
06/15/2010	23:07:21	-2	0.0	8.37	0.0		
06/15/2010	23:07:51	-2	0.0	8.37	0.0		
06/15/2010	23:08:21	-2	0.0	8.37	0.0		
06/15/2010	23:08:51	-2	0.0	8.37	0.0		
06/15/2010	23:09:21	-2	0.0	8.37	0.0		
06/15/2010	23:09:51	-2	0.0	8.37	0.0		
06/15/2010	23:10:21	-2	0.0	8.37	0.0		
06/15/2010	23:10:51	-2	0.0	8.37	0.0		
06/15/2010	23:11:21	3	0.6	8.37	0.0		
06/15/2010	23:11:51	61	1.7	8.35	0.8		
06/15/2010	23:12:21	63	1.7	8.37	1.7		
06/15/2010	23:12:51	20	0.0	8.37	2.1		
06/15/2010	23:12:54					Pressure Test Lines	
06/15/2010	23:12:54	20	0.0	8.37	2.1		
06/15/2010	23:12:56					500/3000 psi Test	
06/15/2010	23:12:56	21	0.0	8.37	2.1		
06/15/2010	23:12:57					Test = Successful	
06/15/2010	23:12:57	20	0.0	8.37	2.1		
06/15/2010	23:13:21	520	0.0	8.37	2.2		
06/15/2010	23:13:51	512	0.0	8.37	2.2		
06/15/2010	23:14:21	507	0.0	8.37	2.2		
06/15/2010	23:14:51	2856	0.0	8.37	2.2		
06/15/2010	23:15:21	3390	0.0	8.37	2.2		
06/15/2010	23:15:51	3263	0.0	8.37	2.2		
06/15/2010	23:16:21	3257	0.0	8.37	2.2		
06/15/2010	23:16:51	3253	0.0	8.37	2.2		
06/15/2010	23:17:01					Start Pumping Spacer	
06/15/2010	23:17:01	1	0.0	8.37	2.2		
06/15/2010	23:17:03					Pump 20 bbl H2O	
06/15/2010	23:17:03					Good Returns	
06/15/2010	23:17:03	-1	0.0	8.37	2.2		
06/15/2010	23:17:21	11	0.0	8.37	2.2		
06/15/2010	23:17:51	64	1.8	8.37	2.3		
06/15/2010	23:18:21	148	3.6	8.37	3.5		
06/15/2010	23:18:51	120	3.6	8.37	5.3		
06/15/2010	23:19:21	141	3.6	8.37	7.0		
06/15/2010	23:19:51	97	3.6	8.37	8.8		
06/15/2010	23:20:21	117	3.6	8.37	10.6		
06/15/2010	23:20:51	114	3.6	8.37	12.4		
06/15/2010	23:21:21	215	5.0	8.37	14.9		
06/15/2010	23:21:51	203	5.0	8.37	17.4		
06/15/2010	23:22:21	205	5.1	8.37	19.9		
06/15/2010	23:22:26					End Spacer	
06/15/2010	23:22:26	201	5.0	8.37	20.3		
06/15/2010	23:22:27					Start Cement Slurry	

Well		Field		Job Start	Customer	Job Number
WF05C-22 K22 596 WF05C-22 K22 596		N. Parachute		Jun/15/2010	Encana	347753
Date	Time 24-hr clock	Treating Pressure PSI	Flow Rate B/M	Density LB/G	Volume BBL	Message
06/15/2010	23:22:51	276	5.1	12.35	22.5	
06/15/2010	23:22:57					Start Mixing Lead Slurry
06/15/2010	23:22:57	283	5.1	12.36	23.0	
06/15/2010	23:23:12					Pump 89 bbls 12.5 Lead
06/15/2010	23:23:12	278	5.1	12.40	24.2	
06/15/2010	23:23:21	405	6.5	12.41	25.1	
06/15/2010	23:23:26					Good Returns
06/15/2010	23:23:26					Wet Dry Samples Taken
06/15/2010	23:23:26	415	6.5	12.42	25.6	
06/15/2010	23:23:27					Mudscale = ok
06/15/2010	23:23:27	392	6.5	12.42	25.8	
06/15/2010	23:23:51	391	6.5	12.46	28.4	
06/15/2010	23:24:21	395	6.5	12.49	31.6	
06/15/2010	23:24:51	386	6.5	12.51	34.9	
06/15/2010	23:25:21	374	6.6	12.53	38.2	
06/15/2010	23:25:51	375	6.5	12.54	41.5	
06/15/2010	23:26:21	361	6.5	12.55	44.7	
06/15/2010	23:26:51	334	6.6	12.54	48.0	
06/15/2010	23:27:21	343	6.5	12.53	51.3	
06/15/2010	23:27:51	339	6.5	12.53	54.6	
06/15/2010	23:28:21	340	6.6	12.61	57.8	
06/15/2010	23:28:51	336	6.5	12.63	61.1	
06/15/2010	23:29:21	346	6.6	12.66	64.4	
06/15/2010	23:29:51	332	6.5	12.64	67.7	
06/15/2010	23:30:21	367	6.6	12.58	70.9	
06/15/2010	23:30:51	330	6.6	12.57	74.2	
06/15/2010	23:31:21	363	6.5	12.55	77.5	
06/15/2010	23:31:51	342	6.6	12.55	80.8	
06/15/2010	23:32:21	345	6.6	12.62	84.0	
06/15/2010	23:32:51	330	6.6	12.61	87.3	
06/15/2010	23:33:21	350	6.6	12.59	90.6	
06/15/2010	23:33:51	329	6.6	12.56	93.9	
06/15/2010	23:34:21	312	6.6	12.60	97.2	
06/15/2010	23:34:51	349	6.5	12.40	100.5	
06/15/2010	23:35:21	188	4.8	12.39	103.5	
06/15/2010	23:35:36					End Lead Slurry
06/15/2010	23:35:36	209	4.7	12.42	104.7	
06/15/2010	23:35:42					Start Mixing Scav Slurry
06/15/2010	23:35:42	207	4.7	12.64	105.2	
06/15/2010	23:35:51	206	4.7	13.54	105.9	
06/15/2010	23:36:21	229	4.7	13.83	108.2	
06/15/2010	23:36:30					Start Mixing Tail Slurry
06/15/2010	23:36:30	225	4.7	13.96	108.9	
06/15/2010	23:36:31					Pump 37 bbl 14.0 Tail
06/15/2010	23:36:31					Good Returns
06/15/2010	23:36:31	259	4.7	13.98	109.0	
06/15/2010	23:36:32					Wet Dry Samples Taken
06/15/2010	23:36:32					Mudscale = oK
06/15/2010	23:36:32	243	4.7	13.99	109.1	
06/15/2010	23:36:51	251	4.7	14.00	110.6	
06/15/2010	23:37:21	238	4.7	14.12	112.9	
06/15/2010	23:37:51	242	4.7	14.12	115.2	
06/15/2010	23:38:21	235	4.7	14.15	117.6	
06/15/2010	23:38:51	123	4.6	13.95	119.9	

Well		Field		Job Start		Customer		Job Number	
WF05C-22 K22 596 WF05C-22 K22 596		N. Parachute		Jun/15/2010		Encana		347753	
Date	Time 24-hr clock	Treating Pressure PSI	Flow Rate B/M	Density LB/G	Volume BBL	Message			
06/15/2010	23:39:51	233	4.7	14.06	124.6				
06/15/2010	23:40:21	248	4.7	14.12	126.9				
06/15/2010	23:40:51	245	4.7	14.17	129.3				
06/15/2010	23:41:21	246	4.7	14.14	131.6				
06/15/2010	23:41:51	249	4.7	14.06	134.0				
06/15/2010	23:42:21	251	4.7	14.08	136.3				
06/15/2010	23:42:51	227	4.7	14.08	138.7				
06/15/2010	23:43:21	217	4.7	14.01	141.0				
06/15/2010	23:43:51	216	4.7	14.00	143.4				
06/15/2010	23:44:21	219	4.7	13.91	145.7				
06/15/2010	23:44:51	242	4.7	13.90	148.1				
06/15/2010	23:45:16					End Tail Slurry			
06/15/2010	23:45:16	204	4.7	13.87	150.0				
06/15/2010	23:45:21	14	2.5	13.91	0.0				
06/15/2010	23:45:25					Drop Top Plug			
06/15/2010	23:45:25	9	0.5	13.98	0.1				
06/15/2010	23:45:26					Start Displacement			
06/15/2010	23:45:26	9	0.3	13.98	0.1				
06/15/2010	23:45:51	8	0.0	13.97	0.1				
06/15/2010	23:46:21	7	0.0	13.95	0.1				
06/15/2010	23:46:51	20	0.0	13.96	0.1				
06/15/2010	23:47:21	20	0.0	13.99	0.1				
06/15/2010	23:47:51	12	0.0	13.76	0.1				
06/15/2010	23:48:21	23	0.0	12.96	0.1				
06/15/2010	23:48:51	17	0.0	11.30	0.1				
06/15/2010	23:49:21	63	2.1	8.84	0.2				
06/15/2010	23:49:51	92	3.6	8.45	1.6				
06/15/2010	23:50:21	83	3.7	8.43	3.4				
06/15/2010	23:50:51	230	6.5	9.17	6.0				
06/15/2010	23:51:21	341	7.9	9.20	9.6				
06/15/2010	23:51:26					Displace 129 bbl H2O			
06/15/2010	23:51:26					Good Returns			
06/15/2010	23:51:26	340	7.9	9.20	10.3				
06/15/2010	23:51:27					caught plug @ 50 away			
06/15/2010	23:51:27	340	7.9	9.20	10.4				
06/15/2010	23:51:51	295	7.8	8.88	13.6				
06/15/2010	23:52:21	306	7.7	8.63	17.5				
06/15/2010	23:52:51	318	8.0	8.48	21.4				
06/15/2010	23:53:21	300	8.0	8.42	25.4				
06/15/2010	23:53:51	304	8.0	8.43	29.4				
06/15/2010	23:54:21	80	4.3	8.28	32.4				
06/15/2010	23:54:51	84	4.1	8.25	34.4				
06/15/2010	23:55:21	156	5.9	8.37	37.1				
06/15/2010	23:55:51	160	5.9	8.37	40.1				
06/15/2010	23:56:21	162	5.9	8.37	43.0				
06/15/2010	23:56:51	167	5.9	8.37	46.0				
06/15/2010	23:57:21	167	5.9	8.37	49.0				
06/15/2010	23:57:51	179	5.9	8.37	51.9				
06/15/2010	23:58:21	220	5.8	8.37	54.8				
06/15/2010	23:58:51	227	5.8	8.37	57.8				
06/15/2010	23:59:21	257	5.8	8.37	60.7				
06/15/2010	23:59:51	281	5.8	8.37	63.6				
06/16/2010	00:00:21	292	5.8	8.37	66.5				
06/16/2010	00:00:51	334	5.8	8.37	69.4				

Well		Field		Job Start		Customer		Job Number	
WF05C-22 K22 596 WF05C-22 K22 596		N. Parachute		Jun/15/2010		Encana		347753	
Date	Time 24-hr clock	Treating Pressure PSI	Flow Rate B/M	Density LB/G	Volume BBL	Message			
06/16/2010	00:01:51	357	5.8	8.37	75.2				
06/16/2010	00:02:21	396	5.8	8.37	78.1				
06/16/2010	00:02:51	389	5.8	8.37	81.0				
06/16/2010	00:03:21	427	5.8	8.37	84.0				
06/16/2010	00:03:51	438	5.8	8.37	86.9				
06/16/2010	00:04:21	448	5.8	8.37	89.8				
06/16/2010	00:04:51	465	5.8	8.37	92.7				
06/16/2010	00:05:21	445	5.8	8.37	95.6				
06/16/2010	00:05:51	477	5.8	8.37	98.5				
06/16/2010	00:06:21	292	2.2	8.37	100.9				
06/16/2010	00:06:51	277	1.0	8.37	101.5				
06/16/2010	00:07:21	293	1.0	8.37	102.0				
06/16/2010	00:07:51	305	0.9	8.37	102.5				
06/16/2010	00:08:21	279	0.6	8.37	102.8				
06/16/2010	00:08:51	282	0.6	8.37	103.1				
06/16/2010	00:09:21	296	0.6	8.37	103.4				
06/16/2010	00:09:51	288	0.3	8.37	103.6				
06/16/2010	00:10:21	287	0.3	8.37	103.8				
06/16/2010	00:10:51	286	0.3	8.37	103.9				
06/16/2010	00:10:53					returns slowed @ 85 away			
06/16/2010	00:10:53	295	0.3	8.37	103.9				
06/16/2010	00:11:21	295	0.3	8.37	104.1				
06/16/2010	00:11:51	294	0.3	8.37	104.2				
06/16/2010	00:12:00					came went till Bump			
06/16/2010	00:12:00	296	0.3	8.37	104.3				
06/16/2010	00:12:19					Due to flow line plugging off			
06/16/2010	00:12:19	298	0.3	8.37	104.4				
06/16/2010	00:12:20					10 bbl cement to surface			
06/16/2010	00:12:20	287	0.3	8.37	104.4				
06/16/2010	00:12:21	292	0.3	8.37	104.4				
06/16/2010	00:12:51	317	0.3	8.37	104.5				
06/16/2010	00:13:21	311	0.3	8.37	104.7				
06/16/2010	00:13:51	315	0.3	8.37	104.9				
06/16/2010	00:14:21	296	0.3	8.37	105.0				
06/16/2010	00:14:51	294	0.3	8.37	105.2				
06/16/2010	00:15:21	324	0.8	8.37	105.3				
06/16/2010	00:15:51	384	2.5	8.37	106.1				
06/16/2010	00:16:21	442	4.0	8.37	107.7				
06/16/2010	00:16:51	447	4.0	8.37	109.7				
06/16/2010	00:17:21	566	5.7	8.37	112.1				
06/16/2010	00:17:51	589	5.8	8.37	115.0				
06/16/2010	00:18:21	606	5.8	8.37	117.9				
06/16/2010	00:18:51	595	5.8	8.37	120.8				
06/16/2010	00:19:21	362	1.8	8.37	122.4				
06/16/2010	00:19:51	472	1.9	8.37	123.4				
06/16/2010	00:20:21	383	1.9	8.37	124.3				
06/16/2010	00:20:51	516	1.9	8.37	125.3				
06/16/2010	00:21:21	523	1.9	8.37	126.3				
06/16/2010	00:21:51	441	1.9	8.37	127.2				
06/16/2010	00:22:21	448	1.9	8.37	128.2				
06/16/2010	00:22:51	517	1.9	8.37	129.2				
06/16/2010	00:23:21	496	1.9	8.37	130.2				
06/16/2010	00:23:51	509	1.9	8.37	131.1				
06/16/2010	00:24:21	1178	0.0	8.37	131.7				

Well		Field		Job Start		Customer		Job Number	
WF05C-22 K22 596 WF05C-22 K22 596		N. Parachute		Jun/15/2010		Encana		347753	
Date	Time 24-hr clock	Treating Pressure PSI	Flow Rate B/M	Density LB/G	Volume BBL	Message			
06/16/2010	00:25:21	1178	0.0	8.38	131.7				
06/16/2010	00:25:51	1178	0.0	8.38	131.7				
06/16/2010	00:26:21	1178	0.0	8.38	131.7				
06/16/2010	00:26:51	1179	0.0	8.38	131.7				
06/16/2010	00:27:21	1180	0.0	8.38	131.7				
06/16/2010	00:27:51	1180	0.0	8.38	131.7				
06/16/2010	00:28:21	1180	0.0	8.38	131.7				
06/16/2010	00:28:51	1181	0.0	8.38	131.7				
06/16/2010	00:29:13					Bump Top Plug			
06/16/2010	00:29:13					End Displacement			
06/16/2010	00:29:13	1181	0.0	8.38	131.7				
06/16/2010	00:29:21	1182	0.0	8.38	131.7				
06/16/2010	00:29:51	1182	0.0	8.38	131.7				
06/16/2010	00:30:21	1183	0.0	8.38	131.7				
06/16/2010	00:30:51	1184	0.0	8.38	131.7				
06/16/2010	00:31:21	1185	0.0	8.38	131.7				
06/16/2010	00:31:51	1186	0.0	8.38	131.7				
06/16/2010	00:32:10					Float Held - 1/2 bbl back			
06/16/2010	00:32:10	1186	0.0	8.38	131.7				
06/16/2010	00:32:21	1187	0.0	8.38	131.7				
06/16/2010	00:32:51	1188	0.0	8.38	131.7				
06/16/2010	00:33:21	1154	0.0	8.38	131.7				
06/16/2010	00:33:51	8	0.0	8.38	131.7				
06/16/2010	00:34:21	-1	0.0	8.38	131.7				
06/16/2010	00:34:51	-1	0.0	8.38	131.7				
06/16/2010	00:35:21	-1	0.0	8.38	131.7				
06/16/2010	00:35:51	-1	0.0	8.38	131.7				
06/16/2010	00:35:57					End Job			
06/16/2010	00:35:57	-1	0.0	8.38	131.7				

Post Job Summary

Average Pump Rates, bbl/min				Volume of Fluid Injected, bbl			
Slurry	N2	Mud	Maximum Rate	Total Slurry	Mud	Spacer	N2
5.0		0.0	8.0	126.0	0.0	20.0	
Treating Pressure Summary, psi				Breakdown Fluid			
Maximum	Final	Average	Bump Plug to	Breakdown	Type	Volume	Density
3000	1180	350	1180		FreshWater	325.0 bbl	8.34 lb/gal
Avg. N2 Percent	Designed Slurry Volume		Displacement	Mix Water Temp	Cement Circulated to Surface?		Volume
	126.0 bbl		129.0 bbl	70 degF	<input checked="" type="checkbox"/>		10.0 bbl
Customer or Authorized Representative				Schlumberger Supervisor		Circulation Lost	
Steve Record				B. Farnham		<input checked="" type="checkbox"/>	
						Job Completed <input checked="" type="checkbox"/>	