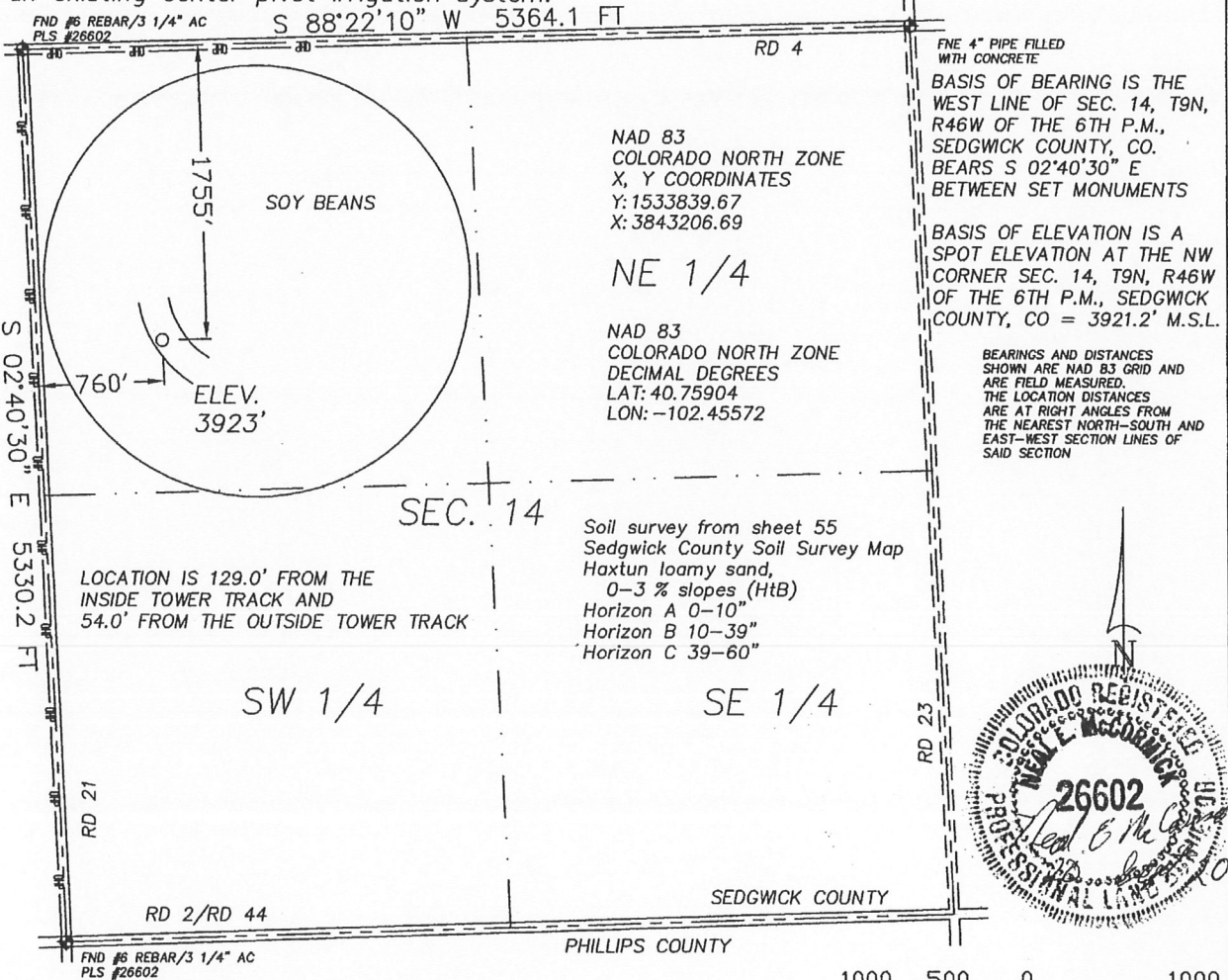


The accompanying plat is an accurate representation showing the location of a proposed well. This location may be described as a point 1755 feet South of the North line, and 760 feet East of the West line of Section 14, Township 9 North, Range 46 West of the 6th P.M., Sedgwick County, Colorado.

The surface elevation at this point is 3923 feet m.s.l.

Note: This is not a land survey plat.

There are no visible improvements within 400 feet of the location, except an existing center pivot irrigation system.



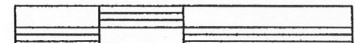
2.002 PDOP

- ★ Dual Producer
- Oil well
- ☼ Gas Well
- ⊙ Dry Hole

GPS OPERATOR: NEAL MCCORMICK

- Location
- x - Fence Line
- · - Half-Sec. Line
- - - Section Line

- ==== Road
- == Trail
- ◆ Survey Monument



Scale 1" = 1000'



GREAT PLAINS
SURVEYING, INC.

20575 C.R. 21 Phone 970-774-3602
Haxtun, CO 80731 Fax 970-774-3601

DATE OF FIELD WORK:

17 SEPTEMBER 2011

DATE OF DRAWING:

20 SEPTEMBER 2011

SKOLD RANCH 946-14-12

SW 1/4 NW 1/4 SEC. 14, T9N, R46W

BLACK RAVEN ENERGY, INC.

SEDGWICK COUNTY, COLORADO

W149N46GPS

9402-255