



Job Number: TC 1-30 PERMIT
 Company: SWEPI LP
 Lease/Well: TROUT CREEK 1-30
 Location: 30-T6N-R85W
 Rig Name:
 RKB: 0.00 Ft
 Vertical Datum:

State/Country:
 Declination: 9.92°E
 Grid: -0.95;US State Plane 1983
 Project name: TROUT CREEK 1-30-Project
 Date/Time: 10-Aug-11 / 15:18
 Well Name: TROUT CREEK 1-30 Proposal
 North Reference: Grid North
 Convergence: -0.9512°

EXCEL Directional Technologies LLC

WinSURV3D SURVEY CALCULATIONS

Minimum Curvature Method

Vertical Section Plane 55.83°

Vertical Section Referenced to Wellhead

Local Coordinates Referenced to Structure Reference :

EW=2590287.48 Ft, NS=1407429.77 Ft

Direction referenced to Grid North -0.951° Convergence

Measured Depth Ft	Incl Angle Deg	Drift Direction Deg	True Vertical Depth	LOCALS		Vertical Section Ft	CLOSURE		Dogleg Severity Deg/100
				N-S Ft	E-W Ft		Distance Ft	Direction Deg	
0.00	0.00	0.00	0.00	0.00	0.00	0.00	0.00	0.00	0.00
100.00	0.00	0.00	100.00	0.00	0.00	0.00	0.00	0.00	0.00
200.00	0.00	0.00	200.00	0.00	0.00	0.00	0.00	0.00	0.00
300.00	0.00	0.00	300.00	0.00	0.00	0.00	0.00	0.00	0.00
400.00	0.00	0.00	400.00	0.00	0.00	0.00	0.00	0.00	0.00
500.00	0.00	0.00	500.00	0.00	0.00	0.00	0.00	0.00	0.00
600.00	0.00	0.00	600.00	0.00	0.00	0.00	0.00	0.00	0.00
700.00	0.00	0.00	700.00	0.00	0.00	0.00	0.00	0.00	0.00
800.00	0.00	0.00	800.00	0.00	0.00	0.00	0.00	0.00	0.00
900.00	0.00	0.00	900.00	0.00	0.00	0.00	0.00	0.00	0.00
Surface Casing @ 1000 Ft MD									
1000.00	0.00	0.00	1000.00	0.00	0.00	0.00	0.00	0.00	0.00
KOP: Begin Build @ 1100MD ,3.00°/ 100 Ft									
1100.00	0.00	0.00	1100.00	0.00	0.00	0.00	0.00	0.00	0.00
1130.00	0.90	55.83	1130.00	0.13	0.19	0.24	0.24	55.82	3.00
1160.00	1.80	55.83	1159.99	0.53	0.78	0.94	0.94	55.83	3.00
1190.00	2.70	55.83	1189.97	1.19	1.75	2.12	2.12	55.83	3.00
1220.00	3.60	55.83	1219.92	2.12	3.12	3.77	3.77	55.83	3.00
1250.00	4.50	55.83	1249.85	3.31	4.87	5.89	5.89	55.83	3.00
1280.00	5.40	55.83	1279.73	4.76	7.01	8.48	8.48	55.83	3.00
1310.00	6.30	55.83	1309.58	6.48	9.54	11.53	11.53	55.83	3.00
1340.00	7.20	55.83	1339.37	8.46	12.46	15.06	15.06	55.83	3.00
1370.00	8.10	55.83	1369.10	10.70	15.76	19.05	19.05	55.83	3.00
1400.00	9.00	55.83	1398.77	13.21	19.45	23.51	23.51	55.83	3.00
1430.00	9.90	55.83	1428.36	15.97	23.53	28.44	28.44	55.83	3.00
1460.00	10.80	55.83	1457.87	19.00	27.99	33.83	33.83	55.83	3.00
1490.00	11.70	55.83	1487.30	22.29	32.83	39.68	39.68	55.83	3.00

Measured Depth Ft	Incl Angle Deg	Drift Direction Deg	True Vertical Depth	L O C A L S		Vertical Section Ft	C L O S U R E		Dogleg Severity Deg/100
				N-S Ft	E-W Ft		Distance Ft	Direction Deg	
1520.00	12.60	55.83	1516.62	25.83	38.05	46.00	46.00	55.83	3.00
1550.00	13.50	55.83	1545.85	29.64	43.66	52.77	52.77	55.83	3.00
1580.00	14.40	55.83	1574.96	33.70	49.64	60.00	60.00	55.83	3.00
1610.00	15.30	55.83	1603.96	38.02	56.00	67.69	67.69	55.83	3.00
1640.00	16.20	55.83	1632.83	42.59	62.74	75.83	75.83	55.83	3.00
1670.00	17.10	55.83	1661.58	47.42	69.85	84.43	84.43	55.83	3.00
1700.00	18.00	55.83	1690.18	52.50	77.34	93.48	93.48	55.83	3.00
1730.00	18.90	55.83	1718.64	57.84	85.19	102.97	102.97	55.83	3.00
1760.00	19.80	55.83	1746.94	63.42	93.42	112.91	112.91	55.83	3.00
1790.00	20.70	55.83	1775.09	69.25	102.01	123.29	123.29	55.83	3.00
1820.00	21.60	55.83	1803.07	75.33	110.96	134.12	134.12	55.83	3.00
1850.00	22.50	55.83	1830.87	81.66	120.28	145.38	145.38	55.83	3.00
1880.00	23.40	55.83	1858.50	88.23	129.96	157.08	157.08	55.83	3.00
1910.00	24.30	55.83	1885.93	95.04	139.99	169.21	169.21	55.83	3.00
1940.00	25.20	55.83	1913.18	102.09	150.39	181.77	181.77	55.83	3.00
1970.00	26.10	55.83	1940.22	109.39	161.13	194.75	194.75	55.83	3.00
2000.00	27.00	55.83	1967.06	116.92	172.22	208.16	208.16	55.83	3.00
2030.00	27.90	55.83	1993.68	124.69	183.67	221.99	221.99	55.83	3.00
2060.00	28.80	55.83	2020.08	132.69	195.45	236.24	236.24	55.83	3.00
2090.00	29.70	55.83	2046.26	140.92	207.58	250.90	250.90	55.83	3.00
2120.00	30.60	55.83	2072.20	149.39	220.05	265.96	265.96	55.83	3.00
2150.00	31.50	55.83	2097.90	158.08	232.85	281.44	281.44	55.83	3.00
2180.00	32.40	55.83	2123.35	166.99	245.98	297.31	297.31	55.83	3.00
2210.00	33.30	55.83	2148.56	176.13	259.45	313.59	313.59	55.83	3.00
2240.00	34.20	55.83	2173.50	185.50	273.24	330.25	330.25	55.83	3.00
2270.00	35.10	55.83	2198.18	195.08	287.35	347.31	347.31	55.83	3.00
2300.00	36.00	55.83	2222.59	204.87	301.78	364.75	364.75	55.83	3.00
2330.00	36.90	55.83	2246.72	214.88	316.52	382.57	382.57	55.83	3.00
2360.00	37.80	55.83	2270.57	225.11	331.58	400.77	400.77	55.83	3.00
2390.00	38.70	55.83	2294.13	235.54	346.95	419.35	419.35	55.83	3.00
2420.00	39.60	55.83	2317.39	246.18	362.62	438.29	438.29	55.83	3.00
2450.00	40.50	55.83	2340.35	257.02	378.59	457.59	457.59	55.83	3.00
Begin Hold @ 40.97°, 55.83° Azm									
2465.57	40.97	55.83	2352.15	262.73	387.00	467.75	467.75	55.83	3.00
2565.57	40.97	55.83	2427.66	299.55	441.24	533.31	533.31	55.83	0.00
2665.57	40.97	55.83	2503.17	336.38	495.48	598.88	598.88	55.83	0.00
2765.57	40.97	55.83	2578.68	373.20	549.73	664.44	664.44	55.83	0.00
2865.57	40.97	55.83	2654.19	410.03	603.97	730.00	730.00	55.83	0.00
2965.57	40.97	55.83	2729.70	446.85	658.21	795.56	795.56	55.83	0.00
3065.57	40.97	55.83	2805.20	483.68	712.46	861.13	861.13	55.83	0.00
3165.57	40.97	55.83	2880.71	520.50	766.70	926.69	926.69	55.83	0.00
3265.57	40.97	55.83	2956.22	557.33	820.94	992.25	992.25	55.83	0.00
3365.57	40.97	55.83	3031.73	594.15	875.19	1057.81	1057.81	55.83	0.00
3465.57	40.97	55.83	3107.24	630.98	929.43	1123.38	1123.38	55.83	0.00
3565.57	40.97	55.83	3182.75	667.80	983.67	1188.94	1188.94	55.83	0.00
3665.57	40.97	55.83	3258.26	704.63	1037.92	1254.50	1254.50	55.83	0.00
3765.57	40.97	55.83	3333.76	741.45	1092.16	1320.06	1320.06	55.83	0.00
3865.57	40.97	55.83	3409.27	778.28	1146.41	1385.63	1385.63	55.83	0.00
3965.57	40.97	55.83	3484.78	815.10	1200.65	1451.19	1451.19	55.83	0.00
4065.57	40.97	55.83	3560.29	851.93	1254.89	1516.75	1516.75	55.83	0.00

Measured Depth Ft	Incl Angle Deg	Drift Direction Deg	True Vertical Depth	L O C A L S		Vertical Section Ft	C L O S U R E		Dogleg Severity Deg/100
				N-S Ft	E-W Ft		Distance Ft	Direction Deg	
4165.57	40.97	55.83	3635.80	888.75	1309.14	1582.31	1582.31	55.83	0.00
4265.57	40.97	55.83	3711.31	925.58	1363.38	1647.88	1647.88	55.83	0.00
4365.57	40.97	55.83	3786.82	962.40	1417.62	1713.44	1713.44	55.83	0.00
4465.57	40.97	55.83	3862.32	999.23	1471.87	1779.00	1779.00	55.83	0.00
4565.57	40.97	55.83	3937.83	1036.05	1526.11	1844.56	1844.56	55.83	0.00
4665.57	40.97	55.83	4013.34	1072.88	1580.35	1910.13	1910.13	55.83	0.00
Intermed Casing @ 4050 Ft TVD									
4714.12	40.97	55.83	4050.00	1090.76	1606.69	1941.96	1941.96	55.83	0.00
4765.57	40.97	55.83	4088.85	1109.70	1634.60	1975.69	1975.69	55.83	0.00
4865.57	40.97	55.83	4164.36	1146.53	1688.84	2041.25	2041.25	55.83	0.00
4965.57	40.97	55.83	4239.87	1183.35	1743.08	2106.81	2106.81	55.83	0.00
5065.57	40.97	55.83	4315.38	1220.18	1797.33	2172.38	2172.38	55.83	0.00
5165.57	40.97	55.83	4390.89	1257.00	1851.57	2237.94	2237.94	55.83	0.00
5265.57	40.97	55.83	4466.39	1293.83	1905.81	2303.50	2303.50	55.83	0.00
5365.57	40.97	55.83	4541.90	1330.65	1960.06	2369.06	2369.06	55.83	0.00
5465.57	40.97	55.83	4617.41	1367.48	2014.30	2434.63	2434.63	55.83	0.00
5565.57	40.97	55.83	4692.92	1404.30	2068.54	2500.19	2500.19	55.83	0.00
5665.57	40.97	55.83	4768.43	1441.13	2122.79	2565.75	2565.75	55.83	0.00
5765.57	40.97	55.83	4843.94	1477.95	2177.03	2631.31	2631.31	55.83	0.00
5865.57	40.97	55.83	4919.45	1514.78	2231.28	2696.88	2696.88	55.83	0.00
5965.57	40.97	55.83	4994.95	1551.60	2285.52	2762.44	2762.44	55.83	0.00
6065.57	40.97	55.83	5070.46	1588.43	2339.76	2828.00	2828.00	55.83	0.00
6165.57	40.97	55.83	5145.97	1625.26	2394.01	2893.57	2893.57	55.83	0.00
PBHL @ 6171 MD / 5150 Ft TVD									
6170.90	40.97	55.83	5150.00	1627.22	2396.90	2897.06	2897.06	55.83	0.00



SWEPI LP

TROUT CREEK 1-30
SEC 30 - TWN 6N - R85W
LOT #4
ROUTT COUNTY, CO

GEODETIC INFORMATION

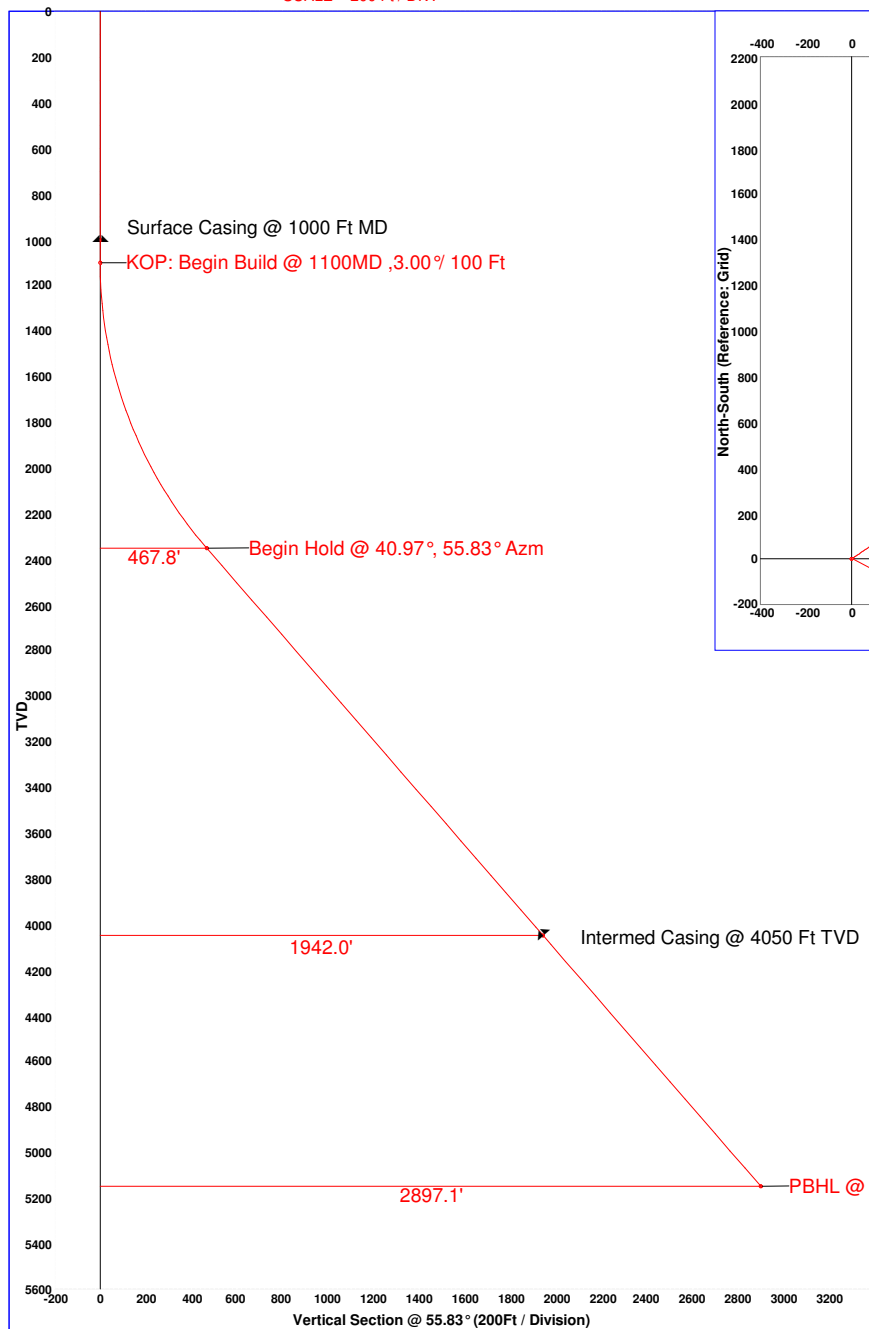
Grid System C083-N Datum: NAD83
Group: US-SPC83 Units: USFEET
Surface Location: X= 2590287.48 Y = 1407429.77
Latitude: 40° 26' 32.86" N Longitude: -106° 58' 19.47" W
Convergence: -0.74° W Scale Factor: 1.0000



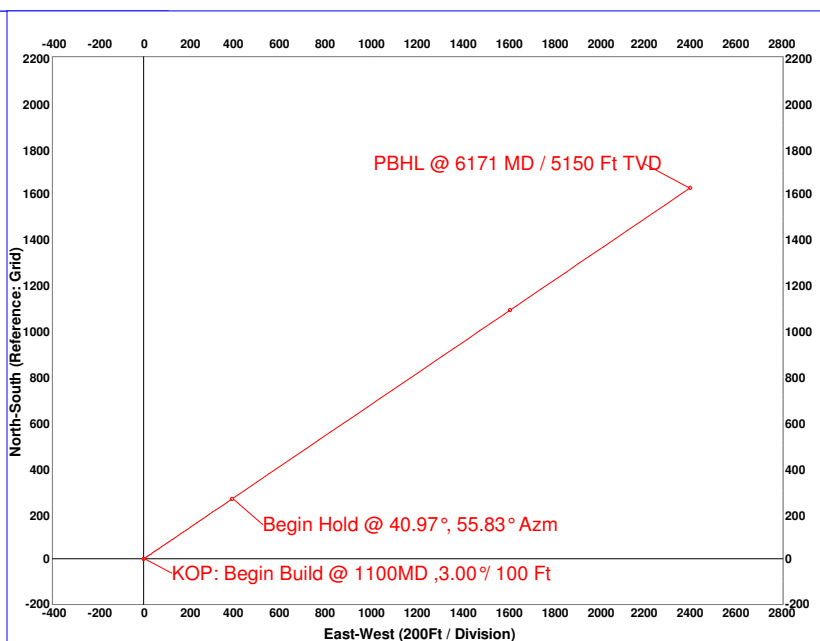
MAGNETIC INFORMATION

Declination Date: Thursday, August 11, 2011
Model: IGRF 2010
Total Correction: 10.71° E --> GN = MN + 10.71 : Magnetic to Grid
Field Strength: 52934 (nt) Mag Dip Angle: 66.70°
Bx,By,Bz (nt): Bx=20524, By=3625, Bz=48616

PROPOSED VERTICAL SECTION PLANE: 55.83
SCALE = 200 Ft / DIV.



PLAN VIEW SCALE = 200 Ft / DIV.



SURFACE LOCATION

GL Elevation: 6880' , RKB: (est)
461' FSL & 753' FWL
Y=1407429.77
X=2590287.48
LAT: 40° 26' 32.8599" N
LONG: -106° 58' 19.4700" W

PBHL @ 5150' TVD

2897.06' @ 55.83°
N:1627.22' E:2396.90'
2225' FSL & 2133' FEL
Y=1409056.99'
X=2592684.38'
LAT: 40° 26' 49.3299" N
LONG: -106° 57' 48.8200" W

Critical Points for TROUT CREEK 1-30 Proposal

MD Ft	INC Deg	Azm Deg	TVD Ft	NS Ft	EW Ft	VS Ft	DLS	Comments
1000.00	0.00	0.00	1000.00	0.00	0.00	0.00	0.00	Surface Casing @ 1000 Ft MD
1100.00	0.00	0.00	1100.00	0.00	0.00	0.00	0.00	KOP: Begin Build @ 1100MD ,3.00% 100 Ft
2465.57	40.97	55.83	2352.15	262.73	387.00	467.75	3.00	Begin Hold @ 40.97°, 55.83° Azm
4714.12	40.97	55.83	4050.00	1090.76	1606.69	1941.96	0.00	Intermed Casing @ 4050 Ft TVD
6170.90	40.97	55.83	5150.00	1627.22	2396.90	2897.06	0.00	PBHL @ 6171 MD / 5150 Ft TVD

Rig:

Report Date: Thursday, August 11, 2011



Trout Creek 1-30

Wellbore Diagram

Updated: 8/1/2011
Location: Section 30 Township 6N Range 85W Routt County, Colorado
Unit: Skeeters Unit
API Number: Pending
Target Zone: Niobrara Shale
Elevation: 6879 GL - Graded
6892 KB

Surface Section

Hole: 13-1/2"
Depth: 1000' MD
Casing: 10-3/4" 40.5# J-55, ST&C
Cement Top: Surface
Mud Weight: 8.4 ppg

Intermediate Section

Hole: 9-7/8"
Depth: 4714' MD / 4050' TVD
Casing: 7-5/8", 29.7#, P-110 LT&C
Cement Top : 800' MD
Mud Weight: AIR DRILLED (5.2 ppg)
Contingency Aerated Water (5.2ppg)

Directional Hole Sections

KOP: 1100
Build @ 3.0 deg per 100' to 40.97 deg at 2,465' MD / 2,352' TVD
Hold to top of Carille

Production Section

Hole: 6-3/4"
Depth: 6,171' MD / 5,150' TVD
Casing: 5-1/2", 17# N-80 H511
Cement : None
Mud Weight: OBM + N2
Liner Top @ 4514' MD / 3,850' TVD

