

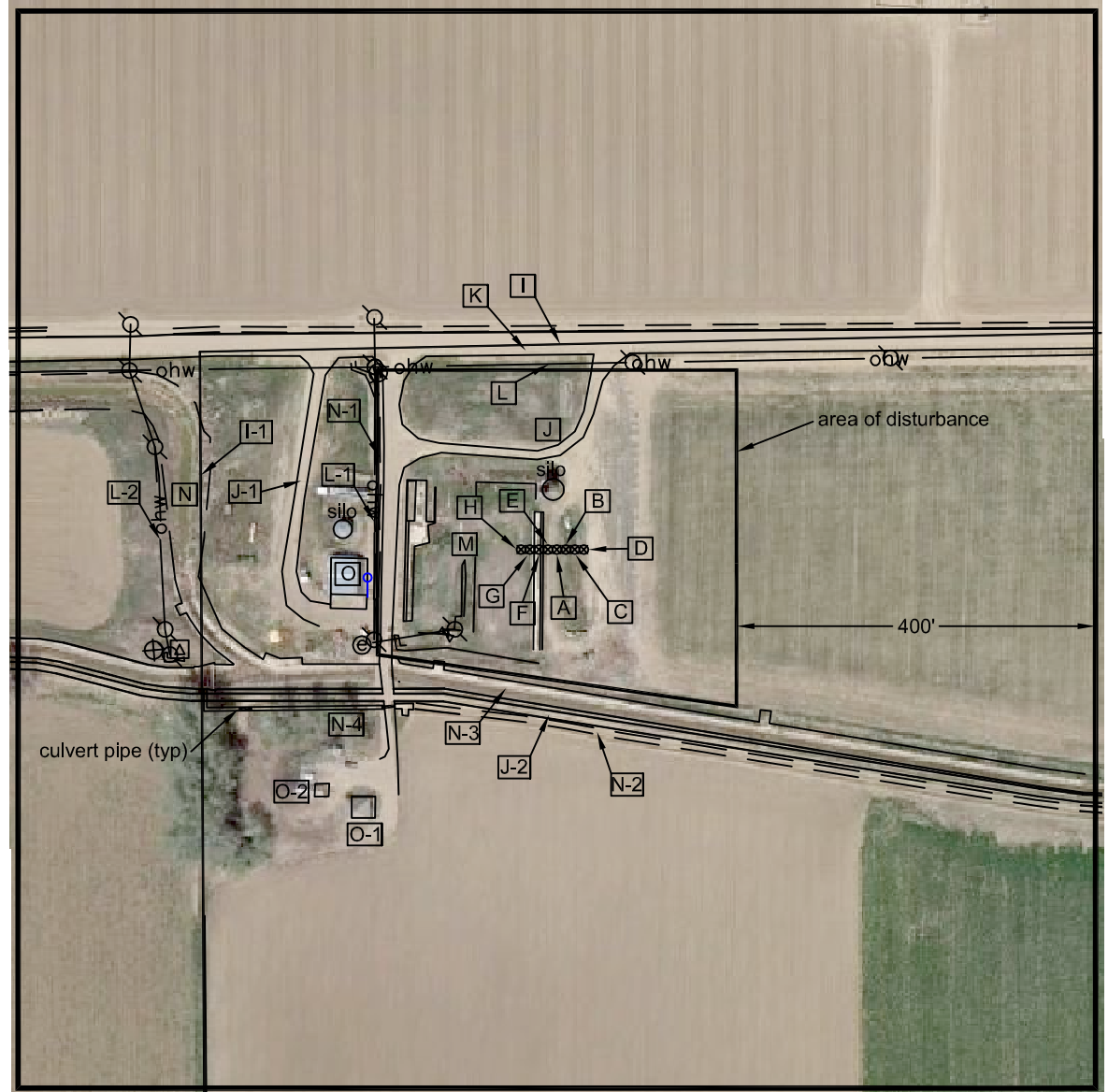
Nearest:  
 Building: 211' southwest  
 Above Ground Utility: 207' north  
 Public Road: 217' north  
 Property Line: 229' north  
 Railroad: 8,843' southeast

# Location Drawing

## Proposed Well Data:

Peppler 1-4  
 Latitude: N 40.26182°  
 Longitude: W 105.00677°  
 FNL: 229'  
 FEL: 2256'  
 ELEV: 5071'  
 PDOP: 1.1

Field observations taken  
 on 8/31/11 by operator  
 Craig Burke.



## Distances listed below are measured from the proposed Peppler 1-4

- [A] proposed Peppler 1-4
- [B] proposed Peppler 42-4, 10' east
- [C] proposed Peppler 6-0-4, 20' east
- [D] proposed Peppler 41-4, 30' east
- [E] proposed Peppler 31-4, 10' west
- [F] proposed Peppler 6-4-4, 20' west
- [G] proposed Peppler 32-4, 30' west
- [H] proposed Peppler 4-2-4, 40' west
- [I] property line 229' north
- [I-1] property line 396' north
- [J] access 103' northwest
- [J-1] access 287' northwest
- [J-2] access 178' south
- [K] Weld County Road 38 217' north
- [L] over head utility line 207' north
- [L-1] over head utility line 203' west
- [L-2] over head utility line 441' west

- [M] abandoned feed lot/concrete feed bunks  
& interior fences 15' west
- [N] ditch 392' northwest
- [N-1] ditch 196' west
- [N-2] ditch 189' south
- [N-3] ditch 153' southwest
- [N-4] ditch 260' southwest
- [O] building 211' southwest
- [O-1] building 341' southwest
- [O-2] building 364' southwest

## Legend:

- [Δ] - electric riser
- [⊗] - utility pole
- [⊙] - water meter
- [⋈] - water valve
- [⊕] - electric meter
- [⊕] - water well
- [⊕] - yard hydrant

**Peppler NWNE  
 Pad Location Drawing**

Improvements extending  
 400' from disturbance

Township 3 North, Range 68 West,  
 Section 4: NW $\frac{1}{4}$  NE $\frac{1}{4}$   
 Weld County, Colorado

Scale: 1"=200'

September 16, 2011

## PLS Group, LLC

109 Coronado Ct. - Building No. 7  
 Fort Collins, Colorado 80525  
 P. 970-282-3446 Fx. 970-377-6767