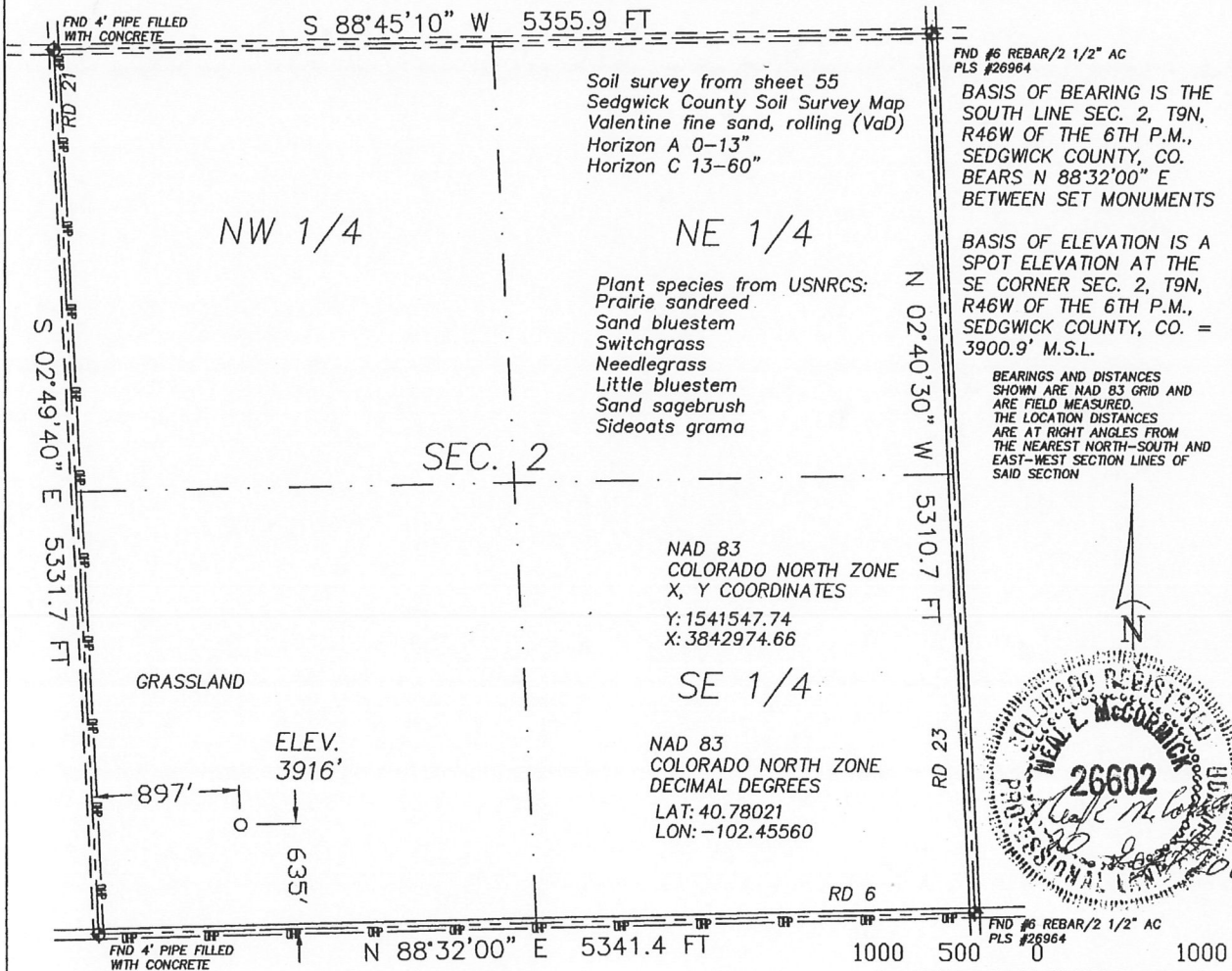



The accompanying plat is an accurate representation showing the location of a proposed well. This location may be described as a point 635 feet North of the South line, and 897 feet east of the West line of Section 2, Township 9 North, Range 46 West of the 6th P.M. Sedgwick County, Colorado. The surface elevation at this point is 3916 feet above m.s.l.
 Note: This is not a land survey plat.
 There are no visible improvements within 400 feet of the location



- 2.143 PDOP GPS OPERATOR: NEAL MCCORMICK
- ☀ Dual Producer
 - Oil well
 - ☼ Gas Well
 - ⊙ Dry Hole
 - Location
 - x - Fence Line
 - - - Half-Sec. Line
 - - - Section Line
 - == Road
 - == Trail
 - ⬢ Survey Monument

 <p>GREAT PLAINS SURVEYING, INC.</p> <p>20575 C.R. 21 Haxtun, CO 80731</p> <p>Phone 970-774-3602 Fax 970-774-3601</p>	DATE OF FIELD WORK:		DATE OF DRAWING:	
	17 SEPTEMBER 2011		20 SEPTEMBER 2011	
	POWELL-ROTEN 946-2-14			
	SW 1/4 SW 1/4 SEC. 2, T9N, R46W			
	BLACK RAVEN ENERGY, INC.			
SEDGWICK COUNTY, COLORADO				

W29N46GPS

9402-253