

## CERTIFICATION OF OWNER NOTIFICATION

### Order No. 1R-100 – 318A Well Locations

#### **Peppler Farms 6-4-4**

1. Encana Oil & Gas (USA) Inc. (Encana) proposes to drill an interior infill well in accordance with Rule 318A, Order No. 1R-100. The well will be drilled at a surface location of 228' FNL and 2276' FEL and a bottomhole location of 2590' FNL and 1350' FEL in Sec. 4, T3N-R68W, Weld County, Colorado, as delineated on the attached location plat.
2. In accordance with Section e (6) of the Rule, Encana notified by certified mail the owners of the proposed boundary well of the proposal to drill the well and the designated wellbore spacing unit.
3. Encana hereby certifies that no objection to the proposed wellbore or the proposed wellbore spacing unit was received.
4. Encana requests that the Director administratively approve the boundary line well and the wellbore spacing unit for the Peppler Farms well.

**EnCana Oil & Gas (USA) Inc.**

  
\_\_\_\_\_  
**DJ Regulatory**

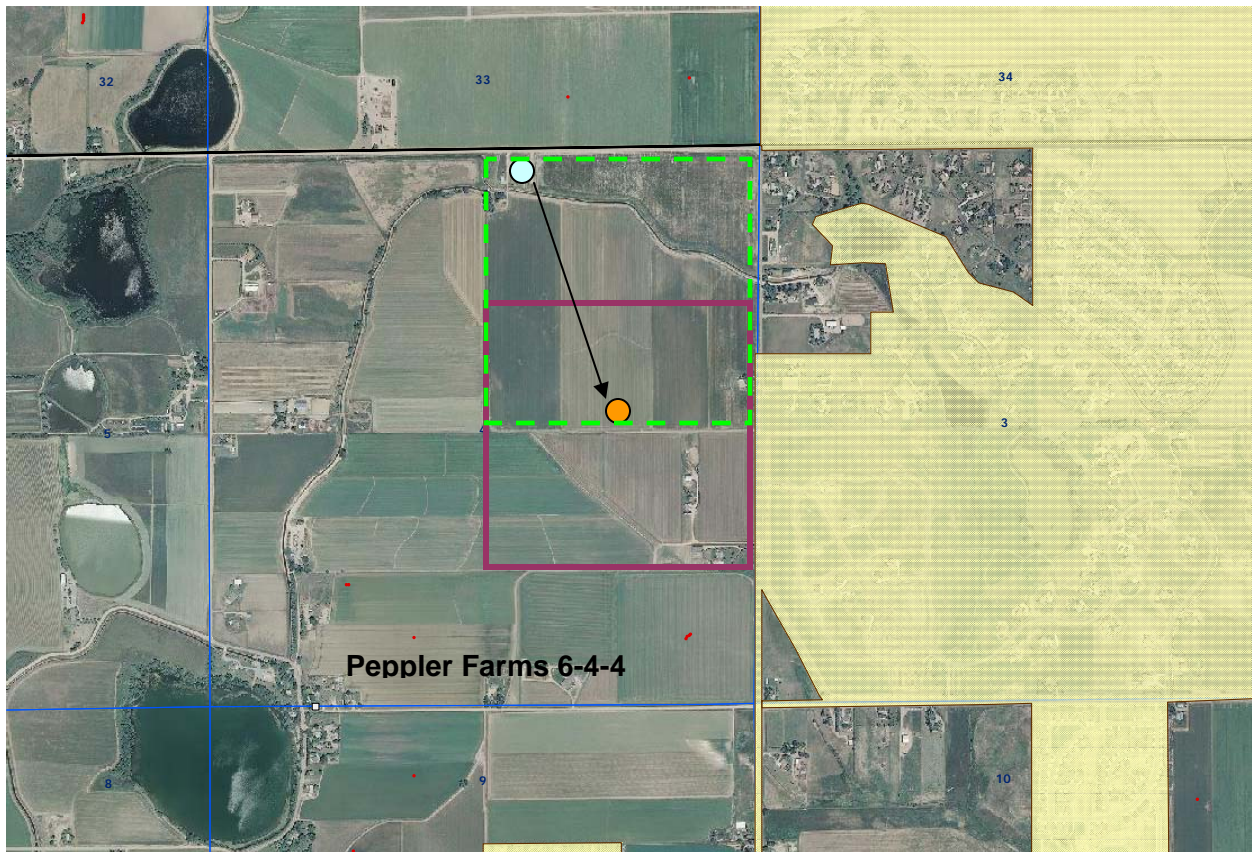
**Date:** 9/30/11

Peppler Farms 6-4-4 Well  
NW4NE4 SEC 4-T3N-R68W

Purple outline = Proposed 160 acre spacing unit: S2NE4, N2SE4 Sec. 4 T1N, R68W  
Green dashed outline = NE/4 (location of surface/bottom hole)

Bottom hole located 2590' FNL, 1350' FEL Section 4-T3N-R68W

This quarter-section has less than 8 bottom hole wells producing from the  
Codell, Niobrara, and J Sand formations.



○ = Surface location

● = Bottom hole location