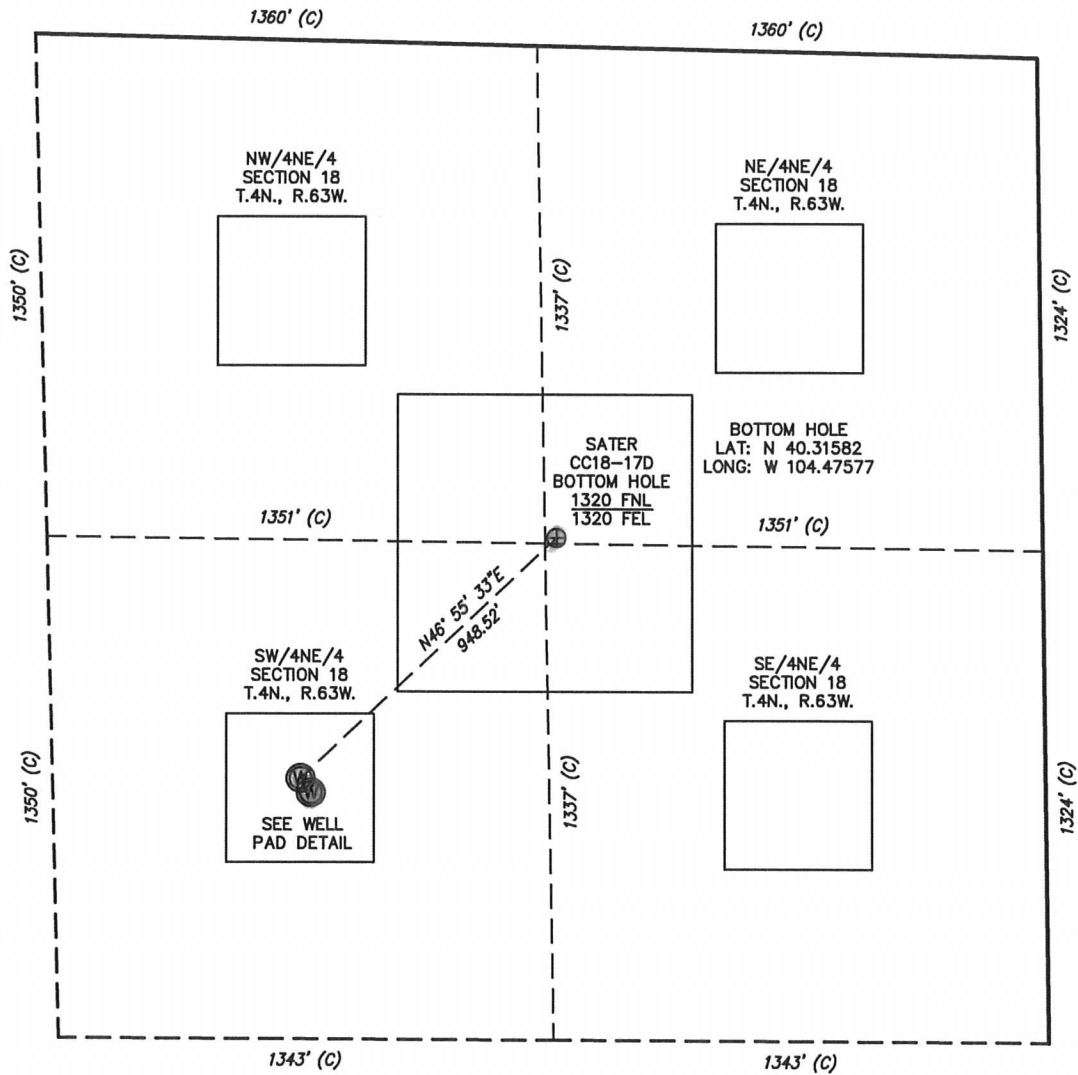
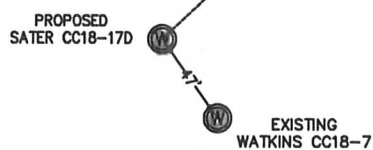


MULTI-WELL PLAN

SECTION 18
TOWNSHIP 4 NORTH
RANGE 63 WEST

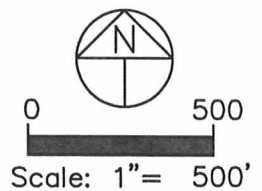


WELL PAD DETAIL



NOTES:

- 1) THIS SKETCH DOES NOT REPRESENT A BOUNDARY SURVEY.
- 2) THE DATUM FOR THE LATITUDES AND LONGITUDES ON THIS SKETCH IS NAD83.



Map Unit Description

Weld County, Colorado, Southern Part

40 Nunn loam, 1 to 3 percent slopes

Setting

Elevation: 4550 to 5000 feet
Mean annual precipitation: 12 to 18 inches
Mean annual air temperature: 46 to 54 degrees F
Frost-free period: 115 to 180 days

Composition

Nunn and similar soils: 85 percent
Minor components: 15 percent

Description of Nunn

Setting

Landform: Terraces
Down-slope shape: Linear
Across-slope shape: Linear
Parent material: Mixed alluvium

Properties and Qualities

Slope: 1 to 3 percent
Drainage class: Well drained
Capacity of the most limiting layer to transmit water (Ksat): Moderately low or moderately high (0.06 to 0.20 in/hr)
Frequency of flooding: None
Frequency of ponding: None
Calcium carbonate maximum: 15 percent
Gypsum maximum: 0 percent
Available water capacity: Moderate (about 9.0 inches)

Interpretive Groups

Land capability classification (irrigated): 2e
Land capability (non irrigated): 4c
Ecological site: Loamy Plains (R067BY002CO)

Typical Profile

0 to 9 inches: loam
9 to 29 inches: clay loam
29 to 40 inches: sandy loam
40 to 60 inches: sandy loam

Minor Components

Dacono

Percent of map unit: 5 percent

Heldt

Percent of map unit: 4 percent

Altvan

Percent of map unit: 3 percent

Platner

Percent of map unit: 3 percent