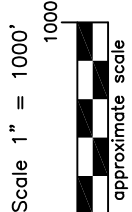
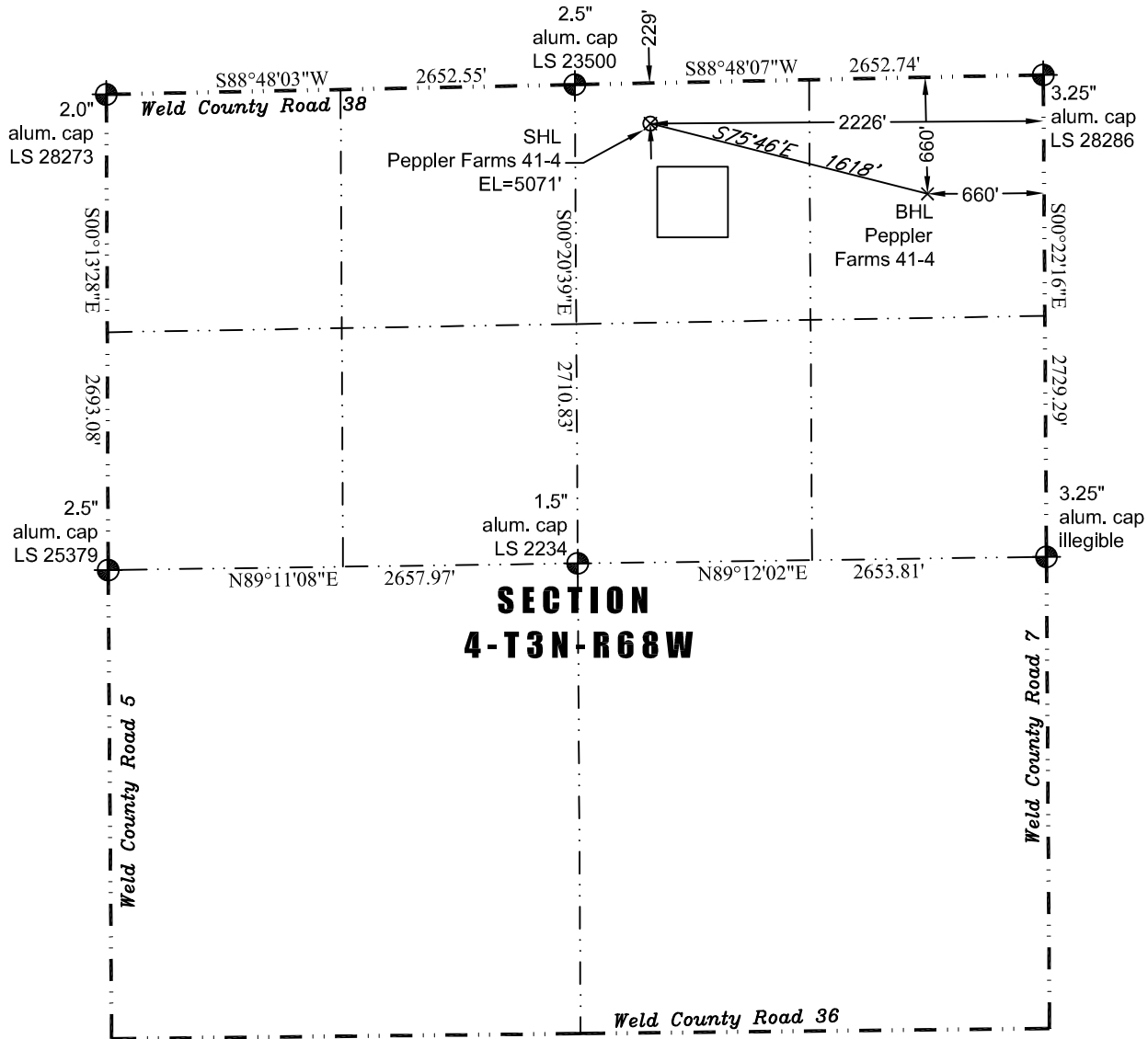


PLS Group, LLC
 109 Coronado Ct. - Bldg. 7
 Fort Collins, Colorado 80525
 P. 970-282-3446 Fx. 970-377-6767

WELL LOCATION CERTIFICATE

THIS MAP DOES NOT REPRESENT A BOUNDARY SURVEY



LEGEND
 — found survey monument
 - - - calculated dimension
 (c)

In accordance with a request from Jay Knutson of EnCana Oil & Gas (USA) Inc., PLS Group, LLC has determined the location of the **Peppler Farms 41-4** well site to be SHL: 229' FNL and 2226' FEL, (BHL 660' FNL and 660' FEL), as measured at ninety (90) degrees from the section lines of Section 4, Township 3 North, Range 68 West of the 6th Principal Meridian, Weld County Colorado.

Proposed Surface Hole Data:

Latitude: N 40.26182° (BHL: 40.26070°)
 Longitude: W 105.00666° (BHL: 105.00105°)
 PDOP: 1.6

Nearest:

Building 241' southwest	Above Ground Utility 207' north
Public Road 218' north	Railroad 8,830' southeast
Property Line 229' north	Well Window: SHL is 248' outside
Existing Well: WCLI USX #3-15P 832' southeast	

I hereby certify that this Well Location Certificate was prepared by me or under my direct supervision on 9/18/2011 and on behalf of EnCana Oil & Gas (USA) Inc. That this is a Land Survey Plat or an Improvement Survey Plat and that it is not to be relied upon for establishment of fence, buildings, or other future improvement lines.

PROFESSIONAL LAND SURVEYOR
 JOHN ROBERT MCGEHEE
 LS#38219
 Well: Peppler Farms 41-4 WLC

- Notes:**
- 1) Bearings and distances based on NAD 83 Colorado North State Plane Coordinates using RTK GPS observations taken 8/31/11 by operator Craig Burke.
 - 2) Conversion factor to ground (1.000281908).
 - 3) Elevations based on NAVD 88 GPS heights and Geoid 2003 corrections.
 - 4) See Location Drawing for visible improvements within 400 feet of Pad Site.
 - 5) The surface use is an abandoned feed lot.

NOTICE: According to Colorado law you must commence any legal action based upon any defect in this W.L.C. within three years after you first discover such defect. In no event may any action based upon any defect in this W.L.C. be commenced more than ten years from this said date of the certification shown hereon.