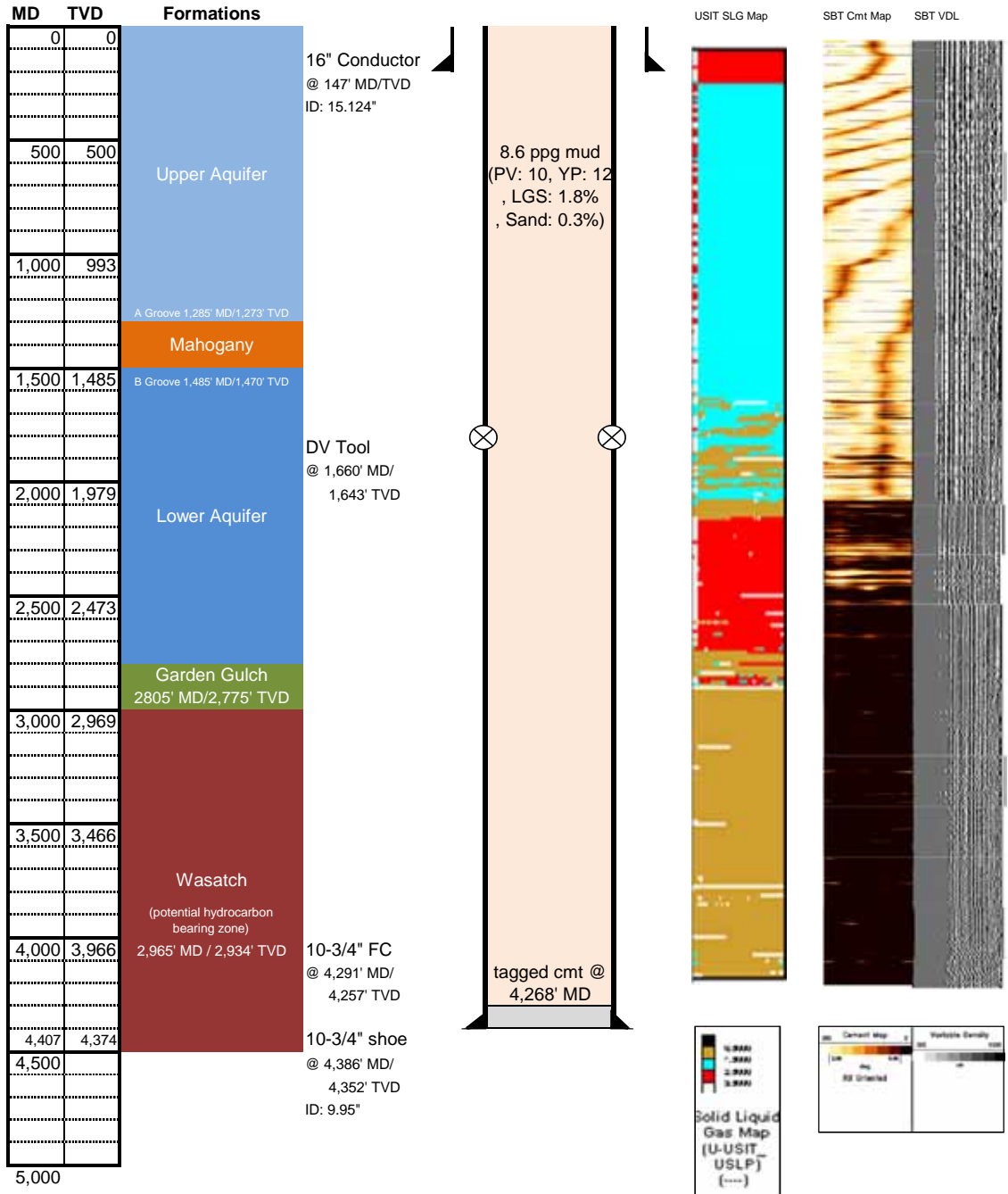


# PCU 296-6B10 Status

COGCC Doc No. 2055262  
Received 09/14/2011



**Calculations**

Capacities	
Cond x Csg:	0.110 bbl/ft
OH x Csg:	0.100 bbl/ft
Inside Csg:	0.097 bbl/ft
Open Hole:	0.212 bbl/ft

Volumes	
Surf to FC	414.50 bbl
Float track	9.18 bbl
Shoe to DV	271.30 bbl
DV to Surf	166.81 bbl
Surf to DV	160.35 bbl

**Cement Volumes**

1st Stage		
Spcr	60.0 bbl	8.33 ppg
Spcr	40.0 bbl	-8.00 ppg "Tuff-Fiber"
Lead	237.0 bbl	12.70 ppg
Tail	72.0 bbl	15.80 ppg
Mud	413.0 bbl	8.70 ppg

Bump Plug: Yes (2000 psi)  
Full Returns: No  
Final Rate: 3.00 bpm  
Circ Pressure: 750.00 psi

2nd Stage		
Spcr	75.0 bbl	8.33 ppg
Lead	284.0 bbl	12.70 ppg
Mud	160.0 bbl	8.70 ppg

Bump Plug: Yes (1513 psi)  
Full Returns: No  
Final Rate: 3.00 bpm  
Circ Pressure: 125.00 psi

- ran 1" to 942' MD; did not tag but could circulate

-USIT run on 8/9 w/ 0 psi (57 hrs after cmt)  
-SBT run on 9/7 w/ 1500 psi

