

REFERENCE INFORMATION

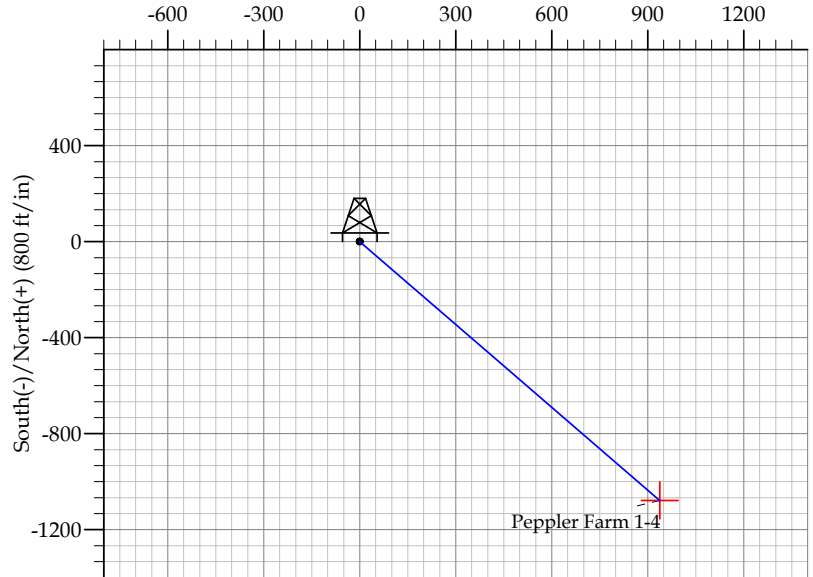
Co-ordinate (N/E) Reference: Well Peppler Farm 1-4, True North
 Vertical (TVD) Reference: WELL @ 5084.0ft (Original Well Elev)
 Section (VS) Reference: Slot - (0.0N, 0.0E)
 Measured Depth Reference: WELL @ 5084.0ft (Original Well Elev)
 Calculation Method:

WELL DETAILS: Peppler Farm 1-4

+N/-S	+E/-W	Northing	Ground Level:	5071.0			
			Easting	Latitude	Longitude	Slot	

SECTION DETAILS

Sec	MD	Inc	Azi	TVD	+N/-S	+E/-W	DLeg	TFace	VSec	Target
1	0.0	0.00	0.00	0.0	0.0	0.0	0.00	0.00	0.0	
2	750.0	0.00	0.00	750.0	0.0	0.0	0.00	0.00	0.0	
3	1493.0	14.86	138.99	1484.7	-72.3	62.9	2.00	138.99	95.8	
4	6318.0	14.86	138.99	6148.3	-1006.0	874.9	0.00	0.00	1333.2	
5	7061.0	0.00	0.00	6883.0	-1078.3	937.7	2.00	180.00	1429.0	
6	8111.0	0.00	0.00	7933.0	-1078.3	937.7	0.00	0.00	1429.0	Peppler Farm 1-4

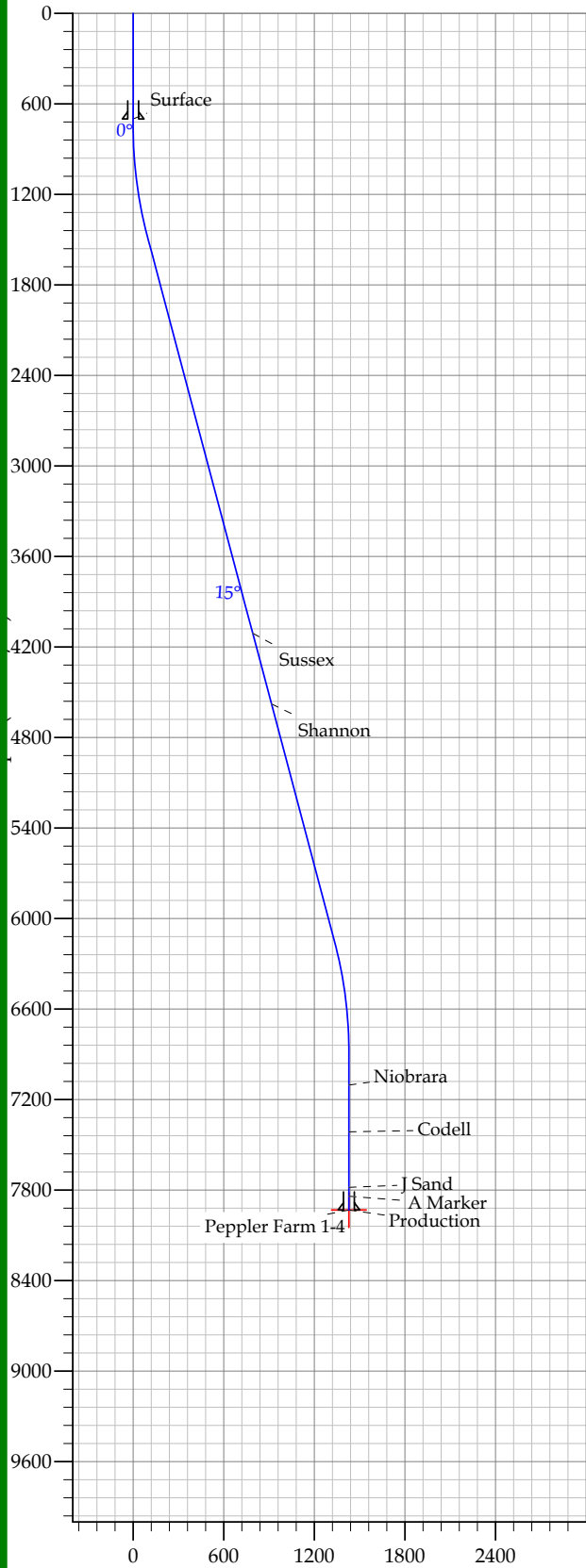


FORMATION TOP DETAILS

TVDPath	MDPath	Formation
4109.0	4208.1	Sussex
4579.0	4694.4	Shannon
7104.0	7282.0	Niobrara
7414.0	7592.0	Codell
7783.0	7961.0	J Sand
7841.0	8019.0	A Marker

CASING DETAILS

TVD	MD	Name	Size
700.0	700.0	Surface	8.625
7933.0	8111.0	Production	4.500



Vertical Section at 138.99° (1200 ft/in)

Surface
 0°
 15°
 Sussex
 Shannon
 Niobrara
 Codell
 J Sand
 A Marker
 Production
 Peppler Farm 1-4

EnCana Corporation

Planning Report - Geographic

Database:	EDM	Local Co-ordinate Reference:	Well Pepler Farm 1-4
Company:	DJ/Paradox/WTX	TVD Reference:	WELL @ 5084.0ft (Original Well Elev)
Project:	Wattenberg	MD Reference:	WELL @ 5084.0ft (Original Well Elev)
Site:	New Drills	North Reference:	True
Well:	Peppler Farm 1-4	Survey Calculation Method:	Minimum Curvature
Wellbore:	Wellbore #1		
Design:	Peppler Farm 1-4		

Project Wattenberg,			
Map System:	US State Plane 1983	System Datum:	Mean Sea Level
Geo Datum:	North American Datum 1983		
Map Zone:	Colorado Northern Zone		

Site New Drills			
Site Position:		Northing:	1,278,589.08ft
From:	Lat/Long	Easting:	3,130,247.44ft
Position Uncertainty:	ft	Slot Radius:	in
		Latitude:	40° 5' 49.848 N
		Longitude:	105° 2' 3.912 W
		Grid Convergence:	0.30 °

Well Peppler Farm 1-4			
Well Position	+N/-S	59,974.3 ft	Northing:
	+E/-W	7,735.2 ft	1,338,605.37 ft
			Latitude:
			40° 15' 42.552 N
			Longitude:
			105° 0' 24.372 W
Position Uncertainty		ft	Wellhead Elevation:
			ft
			Ground Level:
			5,071.0 ft

Wellbore Wellbore #1					
Magnetics	Model Name	Sample Date	Declination (°)	Dip Angle (°)	Field Strength (nT)
	IGRF200510	12/31/2009	9.14	66.96	53,203

Design Peppler Farm 1-4				
Audit Notes:				
Version:	Phase:	PROTOTYPE	Tie On Depth:	0.0
Vertical Section:	Depth From (TVD) (ft)	+N/-S (ft)	+E/-W (ft)	Direction (°)
	0.0	0.0	0.0	138.99

Plan Sections										
Measured Depth (ft)	Inclination (°)	Azimuth (°)	Vertical Depth (ft)	+N/-S (ft)	+E/-W (ft)	Dogleg Rate (°/100ft)	Build Rate (°/100ft)	Turn Rate (°/100ft)	TFO (°)	Target
0.0	0.00	0.00	0.0	0.0	0.0	0.00	0.00	0.00	0.00	
750.0	0.00	0.00	750.0	0.0	0.0	0.00	0.00	0.00	0.00	
1,493.0	14.86	138.99	1,484.7	-72.3	62.9	2.00	2.00	0.00	138.99	
6,318.0	14.86	138.99	6,148.3	-1,006.0	874.9	0.00	0.00	0.00	0.00	
7,061.0	0.00	0.00	6,883.0	-1,078.3	937.7	2.00	-2.00	0.00	180.00	
8,111.0	0.00	0.00	7,933.0	-1,078.3	937.7	0.00	0.00	0.00	0.00	Peppler Farm 1-4

EnCana Corporation

Planning Report - Geographic

Database:	EDM	Local Co-ordinate Reference:	Well Pepler Farm 1-4
Company:	DJ/Paradox/WTX	TVD Reference:	WELL @ 5084.0ft (Original Well Elev)
Project:	Wattenberg	MD Reference:	WELL @ 5084.0ft (Original Well Elev)
Site:	New Drills	North Reference:	True
Well:	Pepler Farm 1-4	Survey Calculation Method:	Minimum Curvature
Wellbore:	Wellbore #1		
Design:	Pepler Farm 1-4		

Planned Survey										
Measured Depth (ft)	Inclination (°)	Azimuth (°)	Vertical Depth (ft)	+N/-S (ft)	+E/-W (ft)	Map Northing (ft)	Map Easting (ft)	Latitude	Longitude	
0.0	0.00	0.00	0.0	0.0	0.0	1,338,605.37	3,137,648.94	40° 15' 42.552 N	105° 0' 24.372 W	
700.0	0.00	0.00	700.0	0.0	0.0	1,338,605.37	3,137,648.94	40° 15' 42.552 N	105° 0' 24.372 W	
Surface										
750.0	0.00	0.00	750.0	0.0	0.0	1,338,605.37	3,137,648.94	40° 15' 42.552 N	105° 0' 24.372 W	
1,493.0	14.86	138.99	1,484.7	-72.3	62.9	1,338,533.43	3,137,712.22	40° 15' 41.837 N	105° 0' 23.561 W	
4,208.1	14.86	138.99	4,109.0	-597.7	519.8	1,338,010.58	3,138,172.06	40° 15' 36.645 N	105° 0' 17.667 W	
Sussex										
4,694.4	14.86	138.99	4,579.0	-691.8	601.6	1,337,916.94	3,138,254.42	40° 15' 35.715 N	105° 0' 16.611 W	
Shannon										
6,318.0	14.86	138.99	6,148.3	-1,006.0	874.9	1,337,604.28	3,138,529.40	40° 15' 32.610 N	105° 0' 13.087 W	
7,061.0	0.00	0.00	6,883.0	-1,078.3	937.7	1,337,532.34	3,138,592.67	40° 15' 31.896 N	105° 0' 12.276 W	
7,282.0	0.00	0.00	7,104.0	-1,078.3	937.7	1,337,532.34	3,138,592.67	40° 15' 31.896 N	105° 0' 12.276 W	
Niobrara										
7,592.0	0.00	0.00	7,414.0	-1,078.3	937.7	1,337,532.34	3,138,592.67	40° 15' 31.896 N	105° 0' 12.276 W	
Codell										
7,961.0	0.00	0.00	7,783.0	-1,078.3	937.7	1,337,532.34	3,138,592.67	40° 15' 31.896 N	105° 0' 12.276 W	
J Sand										
8,019.0	0.00	0.00	7,841.0	-1,078.3	937.7	1,337,532.34	3,138,592.67	40° 15' 31.896 N	105° 0' 12.276 W	
A Marker										
8,111.0	0.00	0.00	7,933.0	-1,078.3	937.7	1,337,532.34	3,138,592.67	40° 15' 31.896 N	105° 0' 12.276 W	
Production - Pepler Farm 1-4										

Design Targets										
Target Name	Dip Angle (°)	Dip Dir. (°)	TVD (ft)	+N/-S (ft)	+E/-W (ft)	Northing (ft)	Easting (ft)	Latitude	Longitude	
Peppler Farm 1-4 - hit/miss target - Shape - Point	0.00	0.00	7,933.0	-1,078.3	937.7	1,337,532.34	3,138,592.67	40° 15' 31.896 N	105° 0' 12.276 W	

Casing Points						
Measured Depth (ft)	Vertical Depth (ft)	Name	Casing Diameter (in)	Hole Diameter (in)		
700.0	700.0	Surface	8.625	12.250		
8,111.0	7,933.0	Production	4.500	7.785		

Formations						
Measured Depth (ft)	Vertical Depth (ft)	Name	Lithology	Dip (°)	Dip Direction (°)	
4,208.1	4,109.0	Sussex		0.00		
4,694.4	4,579.0	Shannon		0.00		
7,282.0	7,104.0	Niobrara		0.00		
7,592.0	7,414.0	Codell		0.00		
7,961.0	7,783.0	J Sand		0.00		
8,019.0	7,841.0	A Marker		0.00		