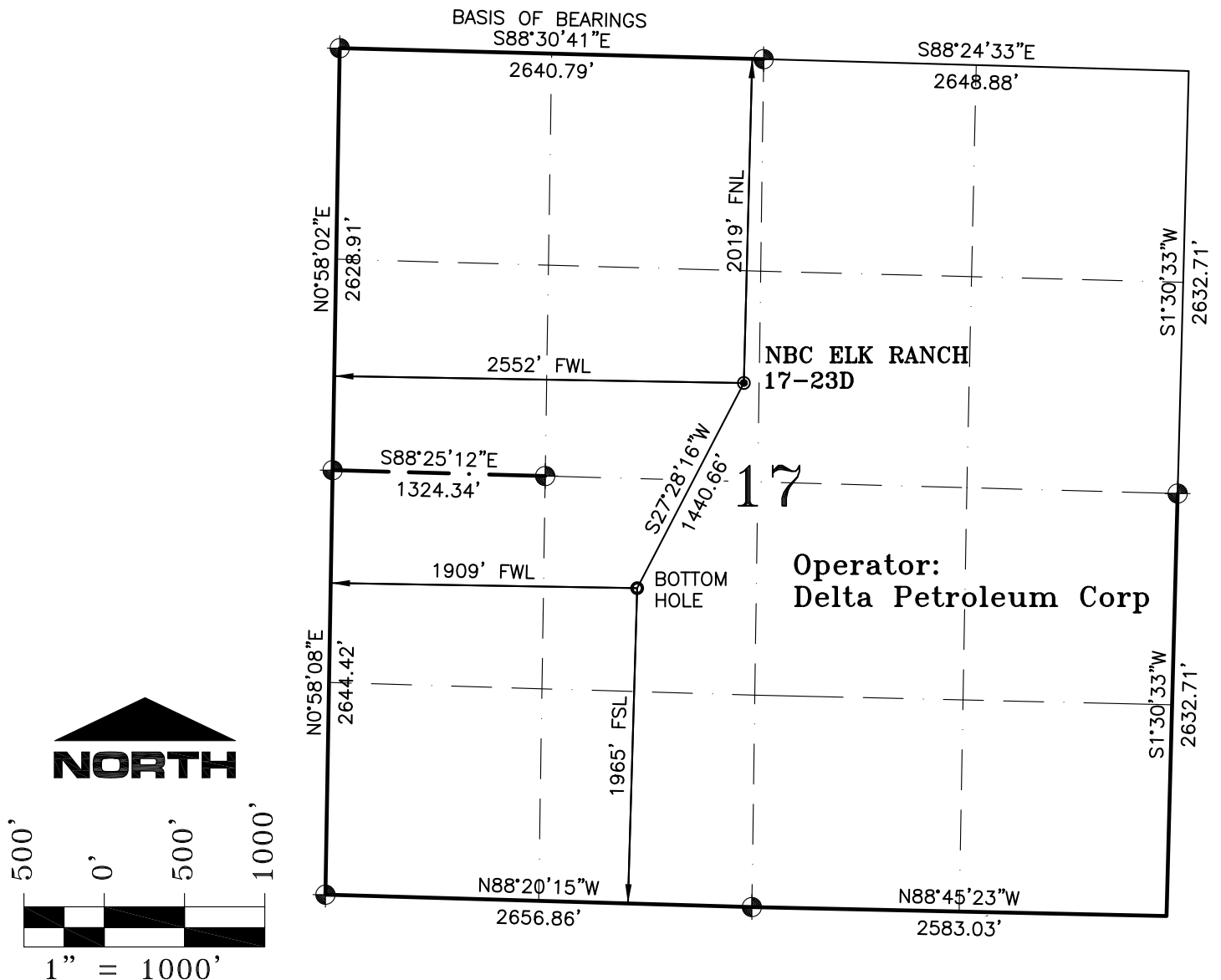


SECTION 17, T9S, R93W, 6th P.M.



NOTES:

1. GEODETIC POSITIONS ARE SHOWN IN DECIMAL DEGREES.
2. UNITS OF LINEAR MEASUREMENT: U.S. SURVEY FOOT
3. ELEVATIONS ARE BASED ON GPS OBSERVATIONS USING GEOID 03, NAVD88.
4. ALL SURFACE (SHL) AND BOTTOM (BHL) HOLE LOCATIONS ARE MEASURED AT 90° ANGLES FROM SECTION LINES.
5. BASIS OF BEARING: S88°30'41\"E BETWEEN FOUND MONUMENTS AS SHOWN HEREON.
6. EXISTING GROUND ELEVATION: 7278'. PROPOSED PAD ELEVATION: 7281'.
7. GPS OPERATOR: KYLE TESKY OBSERVED AN AVERAGE PDOP OF ≤ 3.0 FOR ALL SURVEY MEASUREMENTS DEPICTED ON THIS AND SUBSEQUENT SHEETS. ALL GPS OBSERVATIONS ARE IN COMPLIANCE WITH COGCC RULE NO. 215
8. SURFACE USE: RANGELAND
9. USGS QUAD MAP: HIGHTOWER MOUNTAIN

SURVEYORS STATEMENT:

I, ELWOOD BARRY GILES, BEING A REGISTERED LAND SURVEYOR IN THE STATE OF COLORADO, DO HERBY CERTIFY THAT THIS PLAT REPRESENTS A SURVEY PERFORMED BY ME OR UNDER MY DIRECT SUPERVISION MAY 11, 2011 AND IS TRUE TO THE BEST OF MY KNOWLEDGE AND BELIEF.

Elwood Barry Giles 22 SEPT, 2011
ELWOOD BARRY GILES
COLORADO LS 38150

DATE

WELL No.	SECTION LINES TIES		NAD 83		NAD 27	
NBC ELK RANCH 17-23D	FOOTAGES	FOOTAGES	LATITUDE	LONGITUDE	LATITUDE	LONGITUDE
SURFACE HOLE	2019' FNL	2552' FWL	39.278533°	107.793375°	39.278553°	107.792757°
BOTTOM HOLE	1965' FSL	1909' FWL	39.274980°	107.795607°	39.275000°	107.794989°



SGM INC.
118 W. 6th Street, Suite 200
Glenwood Springs, Colorado 81601
(970) 945-1004 (FAX 945-5948)
Meeker, Colorado (970) 878-5180

Scale: 1"=1000'

Sheet 1B of 8

NBC ELK RANCH 17-23D

Well Location Plat for Delta Petroleum Well NBC Elk Ranch 17-23D
NE1/4SW1/4 Sect.. 17, T. 9 S., R. 93 W., 6th P.M., Mesa County, CO

Job# 2010-349.001

Date: 9.22.11

By: reb

File: elk_ranch_apd