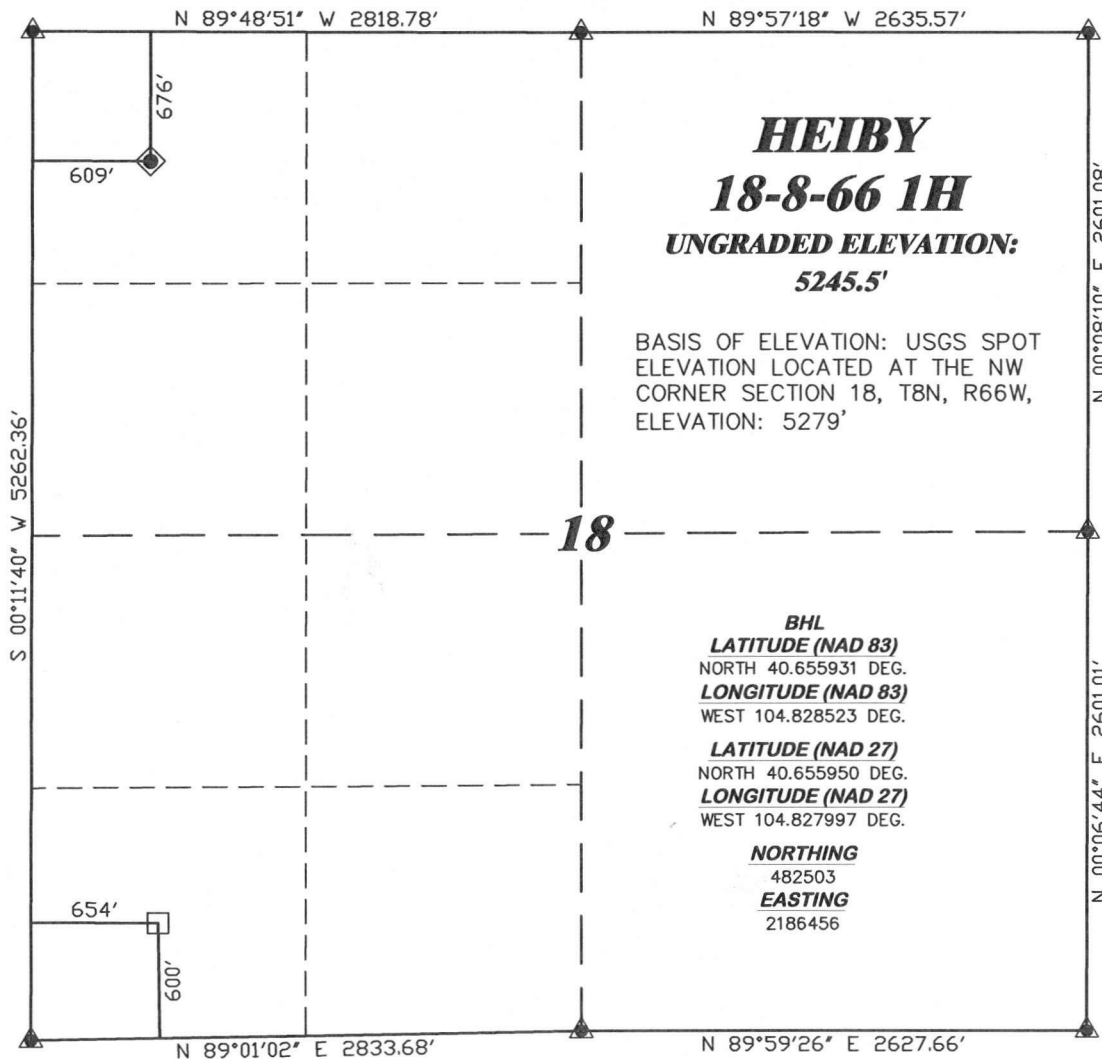


R. 66 W.



SCALE 1" = 1000'

T. 8 N.

HEIBY
18-8-66 1H
UNGRADED ELEVATION:
5245.5'

BASIS OF ELEVATION: USGS SPOT
ELEVATION LOCATED AT THE NW
CORNER SECTION 18, T8N, R66W,
ELEVATION: 5279'

LATITUDE (NAD 83)
NORTH 40.666837 DEG.
LONGITUDE (NAD 83)
WEST 104.828527 DEG.

LATITUDE (NAD 27)
NORTH 40.666856 DEG.
LONGITUDE (NAD 27)
WEST 104.828002 DEG.

NORTHING
486476.04
EASTING
2186424.93

BASIS OF BEARING/DATUM
SPCS CO CENTRAL NAD 27
BASED ON NGS TRIANGULATION
STATION "SHALE"

BHL
LATITUDE (NAD 83)
NORTH 40.655931 DEG.
LONGITUDE (NAD 83)
WEST 104.828523 DEG.
LATITUDE (NAD 27)
NORTH 40.655950 DEG.
LONGITUDE (NAD 27)
WEST 104.827997 DEG.

NORTHING
482503
EASTING
2186456



NOTES

PRIARIE LANDS
NO EXISTING FEATURES WITHIN
400' RADIUS OF WELL SITE.

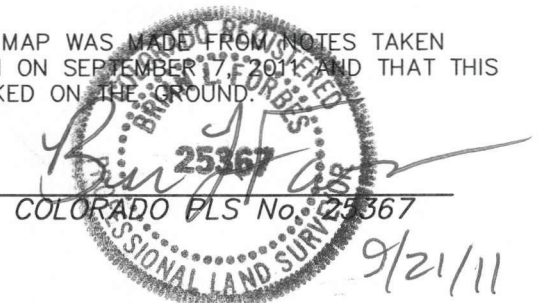
GPS OPERATOR PAUL ORME
OBSERVED A PDOP OF 2.3.
ALL GPS OBSERVATIONS ARE IN
COMPLIANCE WITH COGCC RULE No.215.

SURVEYOR'S STATEMENT

I, BRAIN L. FORBES, OF ROCK SPRINGS, WYOMING, HEREBY STATE: THIS MAP WAS MADE FROM NOTES TAKEN DURING AN ACTUAL FIELD SURVEY DONE UNDER MY DIRECT SUPERVISION ON SEPTEMBER 17, 2011 AND THAT THIS PLAT CORRECTLY SHOWS THE LOCATION OF HEIBY 18-8-66 1H AS STAKED ON THE GROUND.

LEGEND

- ◆ WELL LOCATION
- BOTTOM HOLE LOC. (APPROX)
- FOUND MONUMENT
- ▲ PREVIOUSLY FOUND MONUMENT



RIFFIN & ASSOCIATES, INC.
(307) 362-5028 1414 ELK ST., ROCK SPRINGS, WY 82901

DRAWN: 9/16/11 - JMB

SCALE: 1" = 1000'

REVISED: 9/21/11 - JMB

DRG JOB No. 18784

MOVED BHL

EXHIBIT 1

PLAT OF DRILLING LOCATION
FOR
CHESAPEAKE ENERGY LLC.

676' F/NL & 609' F/WL, NWNW, SECTION 18,
T. 8 N., R. 66 W., 6th P.M.
WELD COUNTY, COLORADO