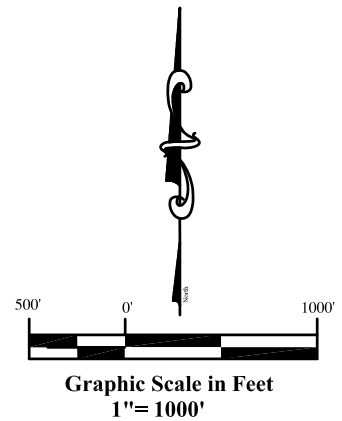
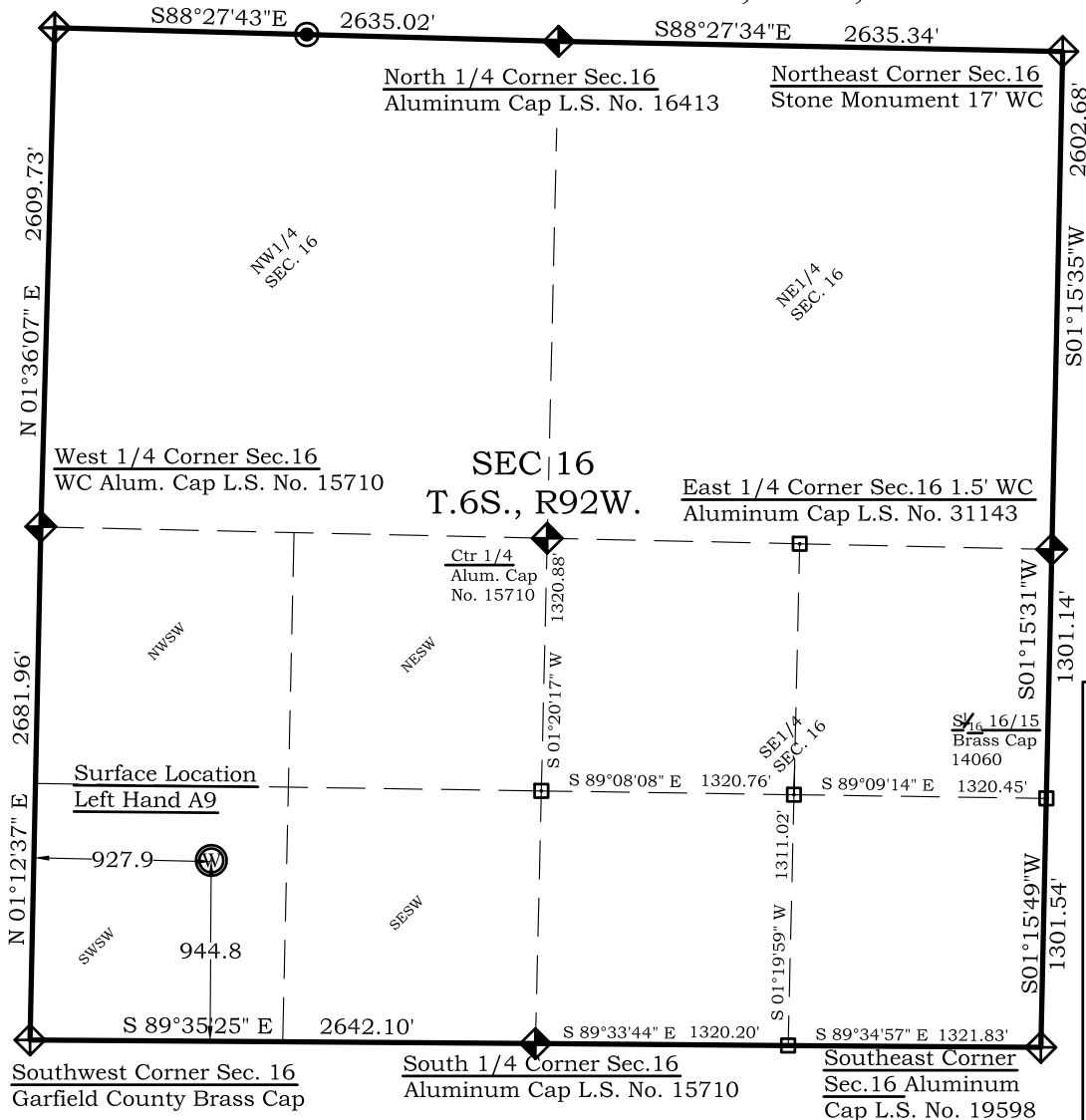


As Drilled Location Plat

Left Hand Federal CA A9

Sec. 16, T.6S., R.92W.

Northwest Corner Sec. 16
Garfield County Brass Cap



Legend

- ◈ - Field Surveyed Section Corner
- ◈ - Field Surveyed Quarter Corner
- ⊙ - Calculated Section Corner Location
- ◻ - Field Surveyed 1/6 Corner

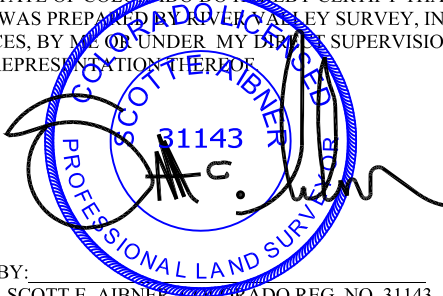
Left Hand Federal CA A9 As Drilled Surface Location

945' FSL
928' FwL
Gnd El= 5684.1
NAD83
Lat: 39.522090873°N
Long: 107.677885122°W
NAD27
Lat: 39.522110333°N
Long: 107.677269551°W
UTM 13 NORTH
NAD 1983
Northing
14363950.046
Easting
885217.643

Prepared For Antero Resources:
As Drilled Left Hand Federal Well CA A9 Well Situate in The
SW1/4SW1/4 Section 16, Township 6 South, Range 92 West of
the 6 th. Principal Meridian, County of Garfield, State of
Colorado

SURVEYOR'S CERTIFICATE

I, SCOTT E. AIBNER, A REGISTERED LAND SURVEYOR, LICENSED UNDER THE LAWS OF THE STATE OF COLORADO, DO HEREBY CERTIFY THAT THE SURVEY SHOWN HEREON WAS PREPARED BY RIVER VALLEY SURVEY, INC., FOR ANTERO RESOURCES, BY ME OR UNDER MY DIRECT SUPERVISION AND THAT THIS PLAT IS A TRUE REPRESENTATION THEREOF.

BY: 
SCOTT E. AIBNER, COLORADO REG. NO. 31143

Notes

- 1.) LATITUDE AND LONGITUDE COORDINATES ARE DIFFERENTIALLY CORRECTED AND BASED ON PUBLISHED NGCS CONTROL STATION "WDP-5". SYSTEM: UTM ZONE: 13 NORTH DATUM: NAD 1983 (CONUS)
- 2.) ELEVATIONS ARE BASED ON NGVD OF 1929.
- 3.) ALL AS DRILLED HOLE LOCATIONS ARE MEASURED 90 DEGREES FROM SECTION LINE.
- 4.) USGS QUADRANGLE MAP "SILT CO".
- 5.) CURRENT SURFACE LAND USE: WELL PAD
- 6.) PDOP AT TIME OF LOCATION OF SURFACE WELL = 1.3



River Valley Survey, Inc.
110 East 3rd. Street, Suite 207
Rifle, Colorado 81650
Ph: 970-379-7846

Project: Left Hand A Pad

Proj. No. 06001-10

Field Date: 07-20-11

Scale: 1"= 1000'

Date: 07-25-11

Sheet: As Drilled

As Drilled Well Location Plat
Prepared For Antero Resources

Situate In:
SW1/4SW1/4 Section 16, T6S., R. 92 W
of the 6th P.M., Garfield County,
Colorado

