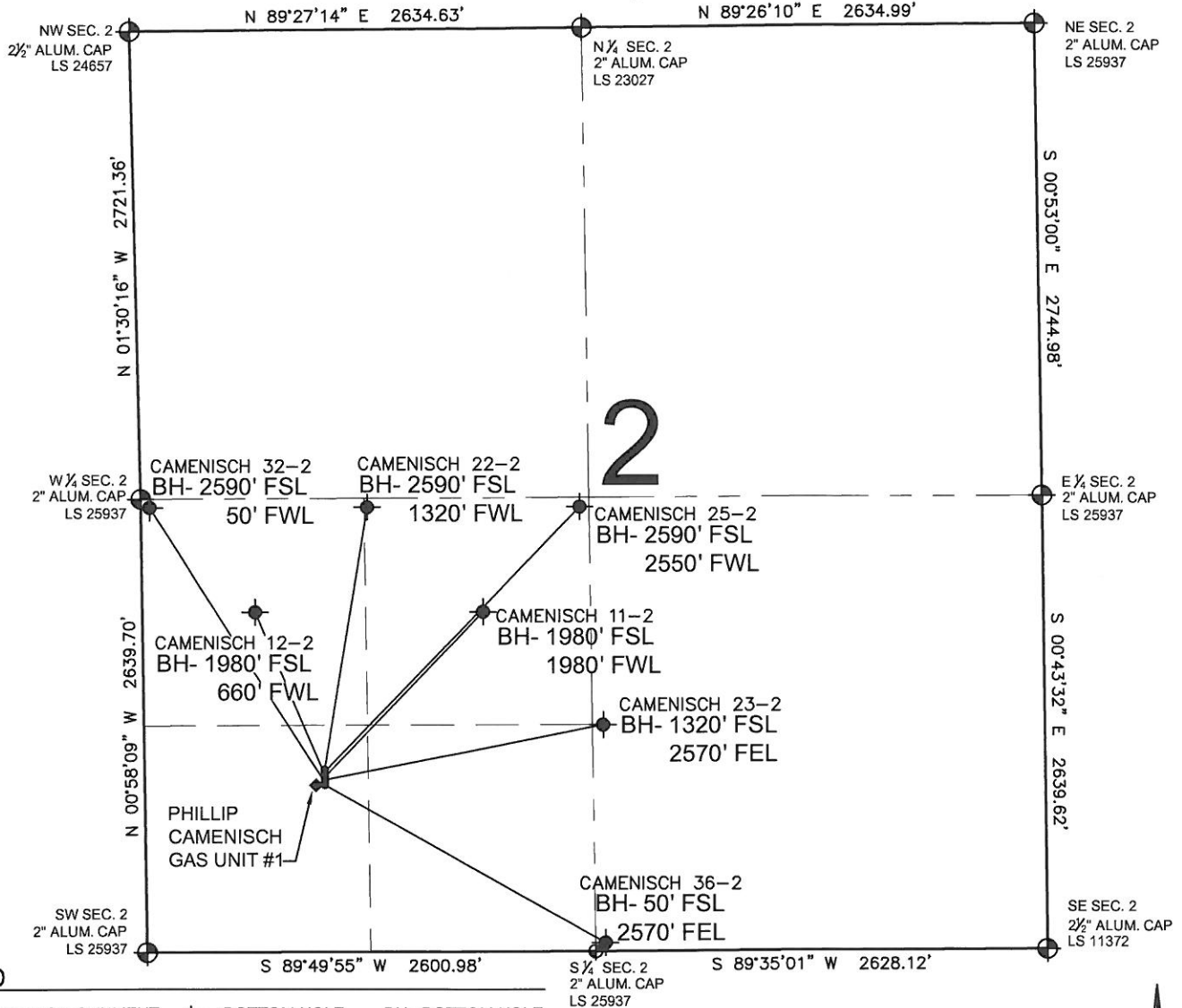


PAD DRAWING: CAMENISCH 7 PAD

SECTION 2, TOWNSHIP 1 NORTH, RANGE 67 WEST, 6TH P.M.



LEGEND

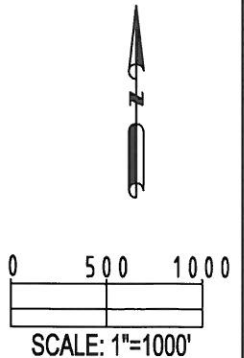
- = EXISTING MONUMENT
 = PROPOSED WELL
 = BOTTOM HOLE
 BH= BOTTOM HOLE
 = EXISTING WELL

NOTES:

- THIS SURVEY WAS DONE BY GPS METHODS AND CONFORMS TO THE MINIMUM STANDARDS SET BY THE C.O.G.C.C., RULE NO. 215 (PDOP VALUE IS LESS THAN 6.0, LATITUDE AND LONGITUDE ARE ACCURATE TO 5 DECIMAL PLACES, AND GPS OBSERVATIONS ARE DIFFERENTIAL AND DONE BY QUALIFIED PERSONNEL.)
- ELEVATIONS SHOWN AT THE WELL HEAD, AS WELL AS HORIZONTAL CONTROL, ARE BASED ON GPS-RTK VALUES DERIVED FROM DOING 2-HOUR STATIC GPS SESSIONS AND REDUCTIONS USING O.P.U.S. SOLUTIONS.
VERTICAL = NAVD88; HORIZONTAL = NAD83/92
- THE BEARINGS SHOWN HEREON ARE BASED ON GPS OBSERVATIONS BETWEEN THE MONUMENTS SHOWN HEREON AS FOUND ON THE FIELD DATE BELOW.
- DISTANCES SHOWN ARE AT GROUND LEVEL, AS MEASURED IN THE FIELD, WITH TIES TO WELLS MEASURED AT A PERPENDICULAR TO SECTION LINES.

NOTES:

- CAMENISCH 36-2 TO BE AT 973' FSL, 1050' FWL.
 BOTTOM HOLE AT 50' FSL & 2570' FEL.
 CAMENISCH 32-2 TO BE AT 988' FSL, 1050' FWL.
 BOTTOM HOLE AT 2590' FSL & 50' FWL.
 CAMENISCH 23-2 TO BE AT 1003' FSL, 1050' FWL.
 BOTTOM HOLE AT 1320' FSL & 2570' FEL.
 CAMENISCH 11-2 TO BE AT 1018' FSL, 1050' FWL.
 BOTTOM HOLE AT 1980' FSL & 1980' FWL.
 CAMENISCH 12-2 TO BE AT 1033' FSL, 1050' FWL.
 BOTTOM HOLE AT 1980' FSL & 660' FWL.
 CAMENISCH 25-2 TO BE AT 1048' FSL, 1050' FWL.
 BOTTOM HOLE AT 2590' FSL & 2550' FWL.
 CAMENISCH 22-2 TO BE AT 1063' FSL, 1050' FWL.
 BOTTOM HOLE AT 2590' FSL & 1320' FWL.
 PHILLIP CAMENISCH GAS UNIT #1 IS AT 973' FSL, 1003' FWL.



REVISIONS

INITIAL	DATE
SMF	05-25-10
TJN	11-30-10

PREPARED BY:

PFS

Petroleum Field Services, LLC
1801 W. 13th Ave.
Denver, CO 80204



KERR-MCGEE OIL & GAS ONSHORE LP

FIELD DATE:
04-30-10

DRAWING DATE:
05-10-10

BY:
CP

PAD NAME:
CAMENISCH 7 PAD

SURFACE LOCATION:

WELD COUNTY, COLORADO
SW 1/4 SW 1/4, SEC. 2, T1N, R67W