



CEMENT BOND LOG

Company		XTO Energy Inc.	
Well		Apache Canyon 20-15	
Field		Purgatorie River	
County	Las Animas	State	Colorado
Location:		API # : 05-071-09867-00	Other Services
SEC 20 TWP 34S RGE 67W		81' FSL & 2443' FEL	DEVI
Permanent Datum	GL	Elevation	8049'
Log Measured From	GL.		
Drilling Measured From	G.L.		
Date	8-22-11		
Run Number	one		
Depth Driller	2566'		
Depth Logger	1600'		
Bottom Logged Interval	1598'		
Top Log Interval	Surface		
Open Hole Size	7 7/8		
Type Fluid	water		
Density / Viscosity	///		
Max. Recorded Temp.	///		
Estimated Cement Top	///		
Time Well Ready	R.O.A		
Time Logger on Bottom	7:15 A.M.		
Equipment Number	T590		
Location	Trinidad		
Recorded By	C. Sisneros		
Witnessed By	E. Haught		
Borehole Record		Tubing Record	
Run Number	Bit	From	To
Casing Record	Size	Wgt/Ft	Top
Surface String	8 5/8"		Bottom
Prot. String			500'
Production String	5 1/5"		TD
Liner			

<<< Fold Here >>>

All interpretations are opinions based on inferences from electrical or other measurements and we cannot and do not guarantee the accuracy or correctness of any interpretation, and we shall not, except in the case of gross or willful negligence on our part, be liable or responsible for any loss, costs, damages, or expenses incurred or sustained by anyone resulting from any interpretation made by any of our officers, agents or employees. These interpretations are also subject to our general terms and conditions set out in our current Price Schedule.

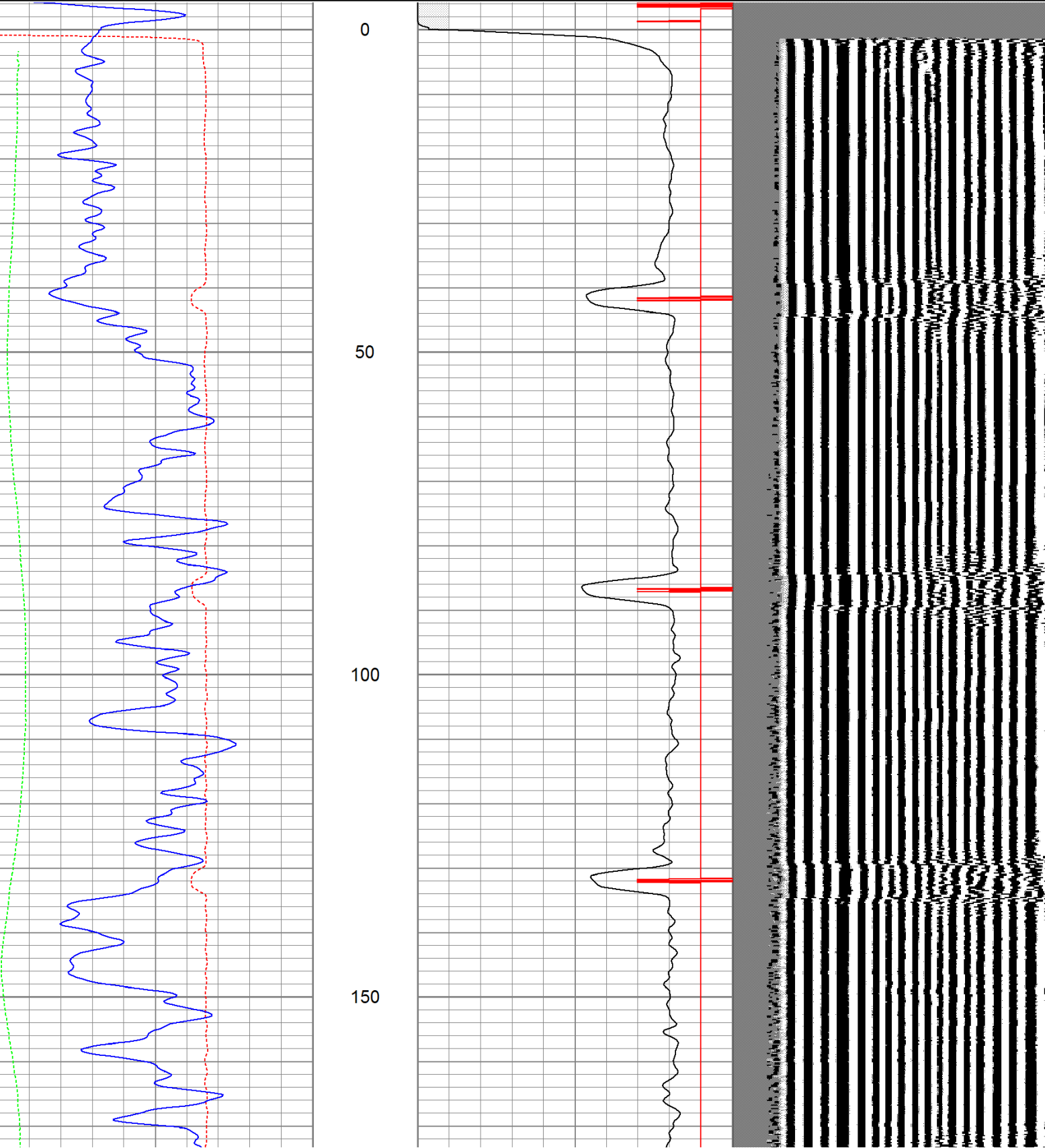
Comments

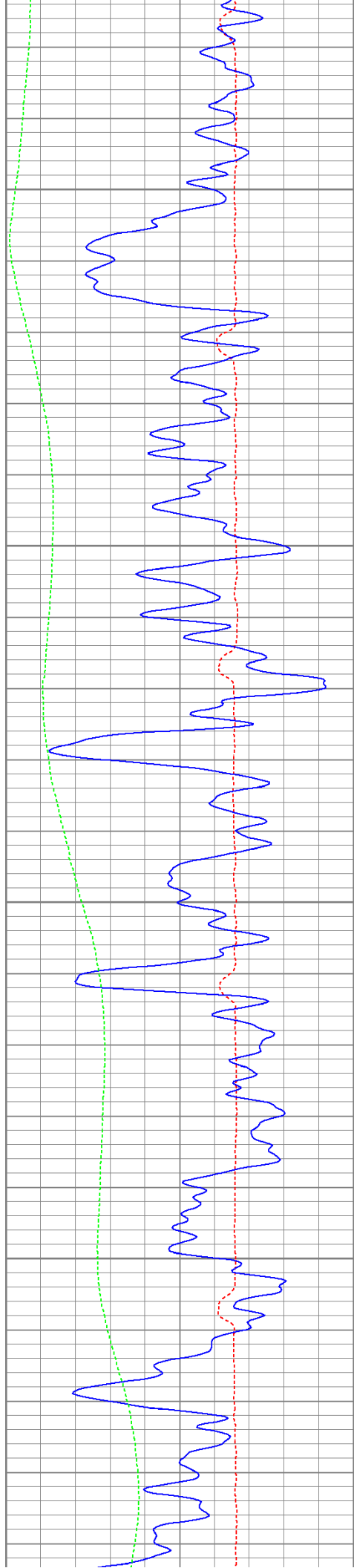


Main Pass

Database File: ac20-1582211b.db
Dataset Pathname: pass3.1
Presentation Format: cbldig
Dataset Creation: Mon Aug 22 08:28:32 2011 by Calc Open-Cased 110302
Charted by: Depth in Feet scaled 1:240

400	Travel Time (usec)	200	0	Amplitude (mV)	100	200	Variable Density	1200
0	GR (GAPI)	200	9	Collar Locator	-1			
0	DEVI (°)	10						



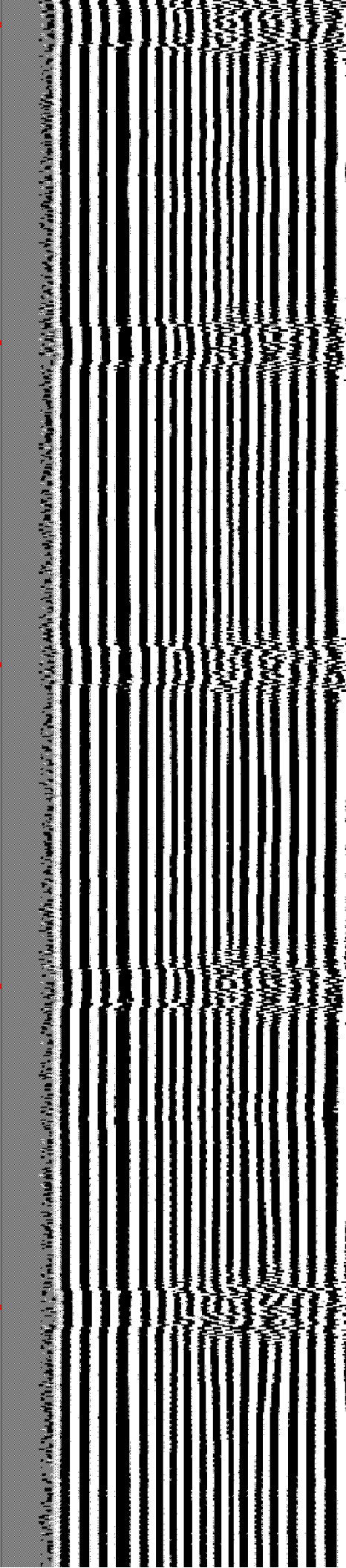
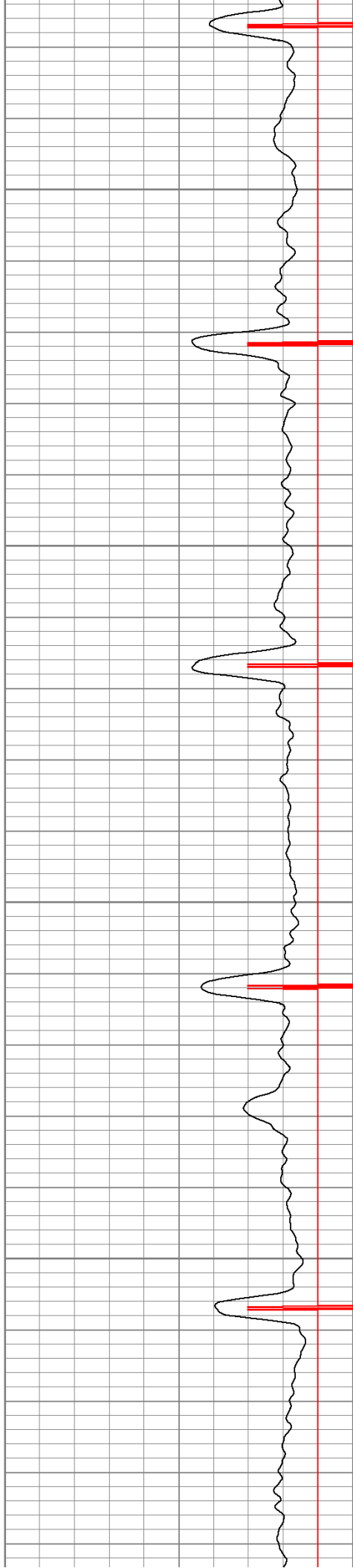


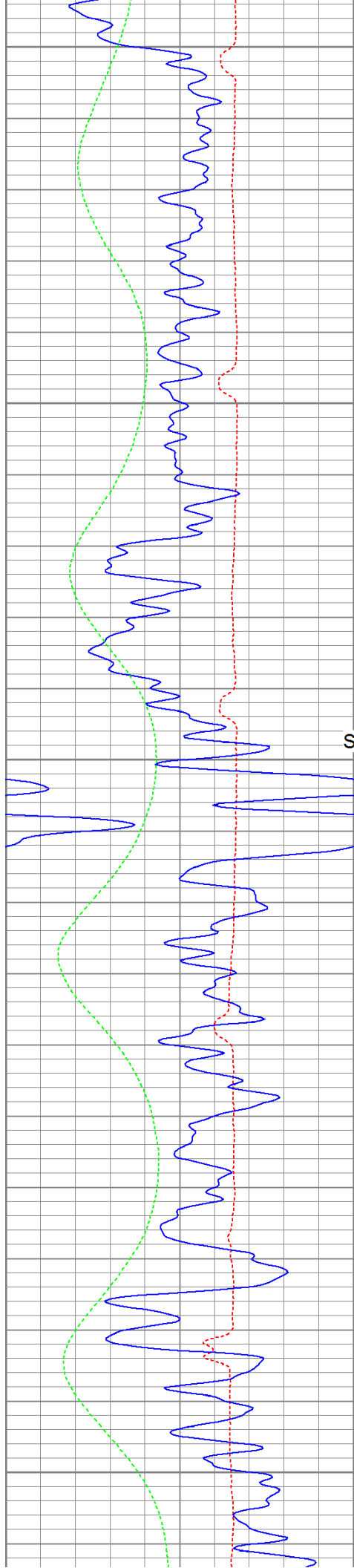
200

250

300

350





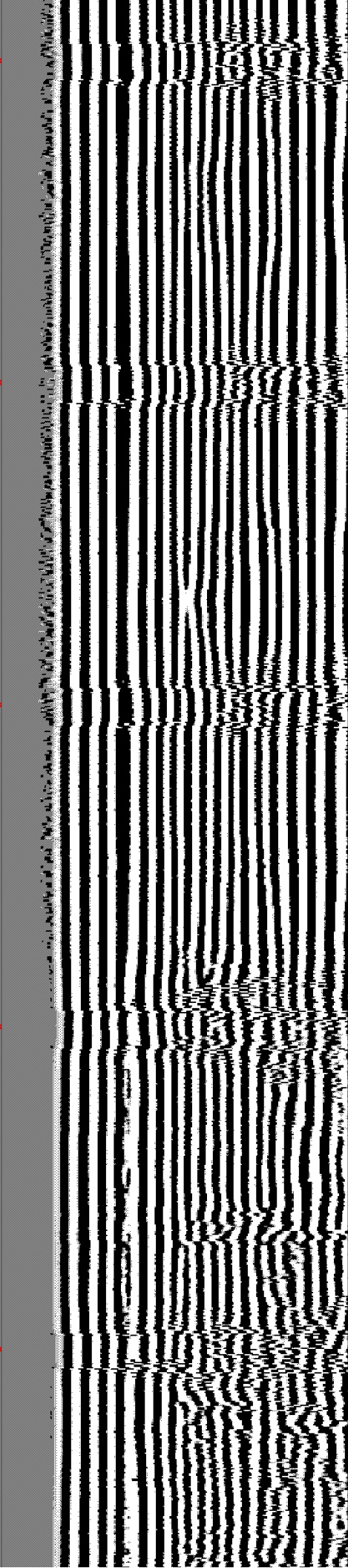
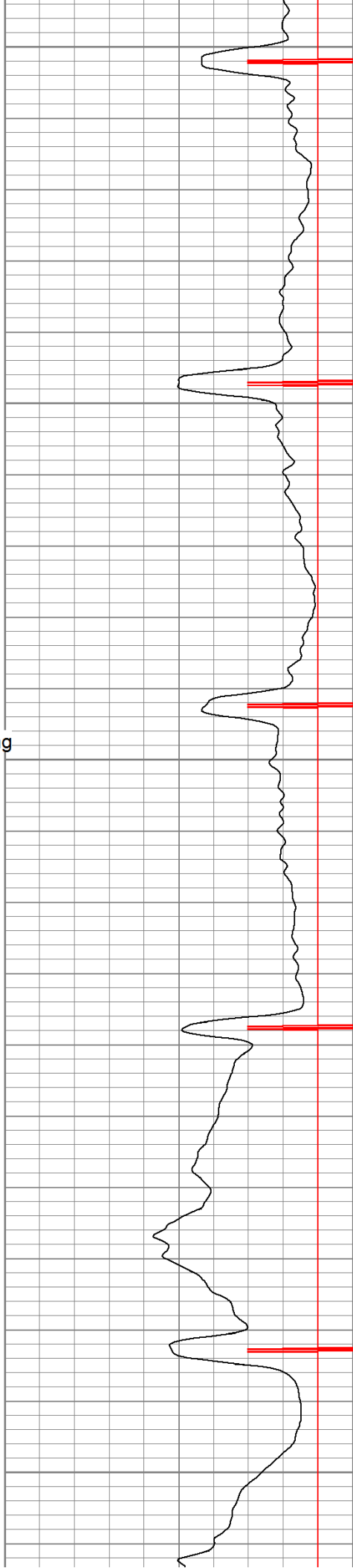
400

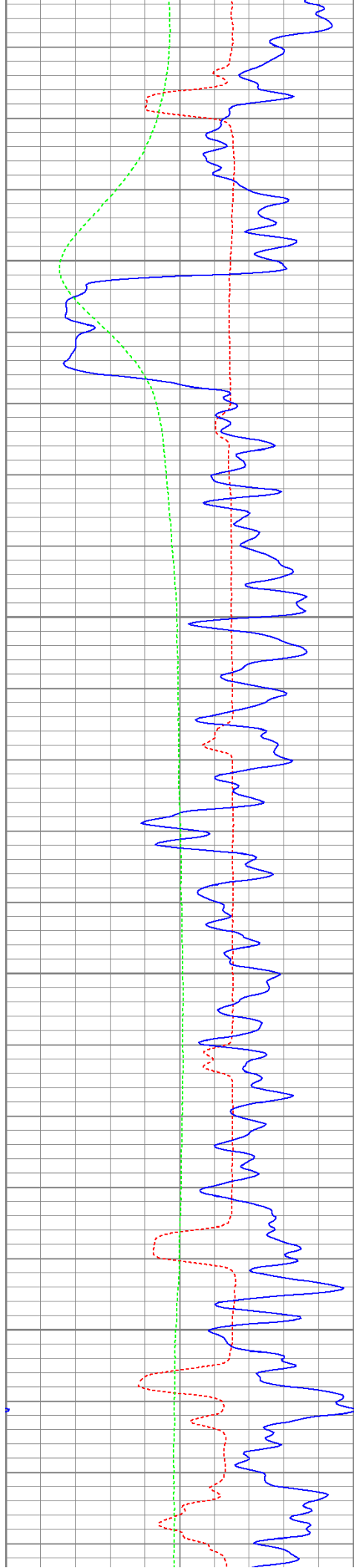
450

Surface Casing
500

550

600



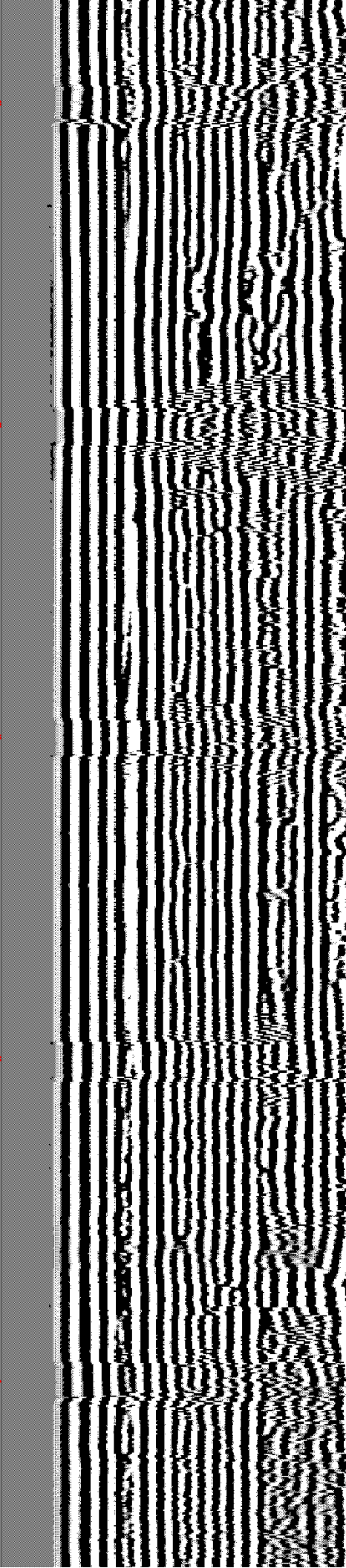
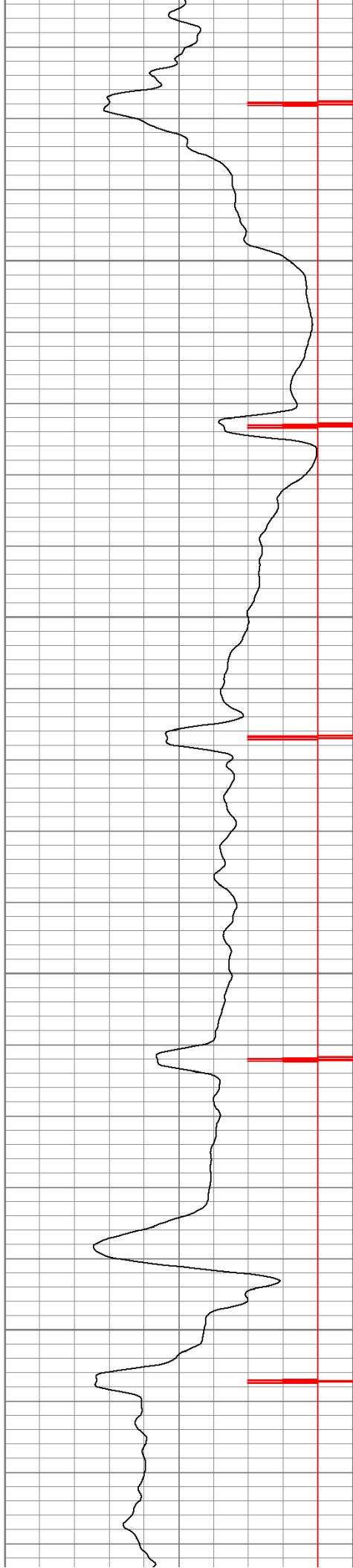


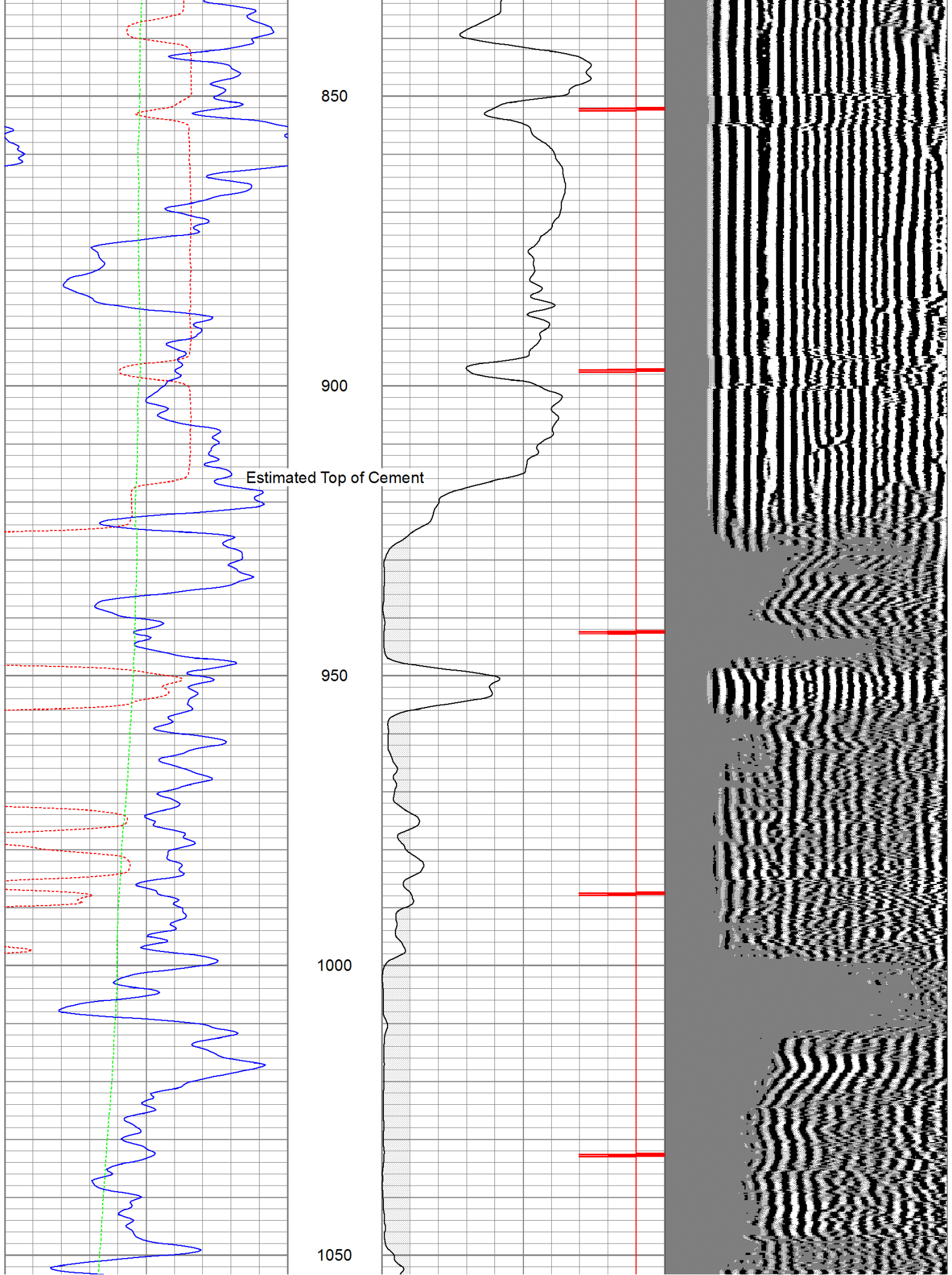
650

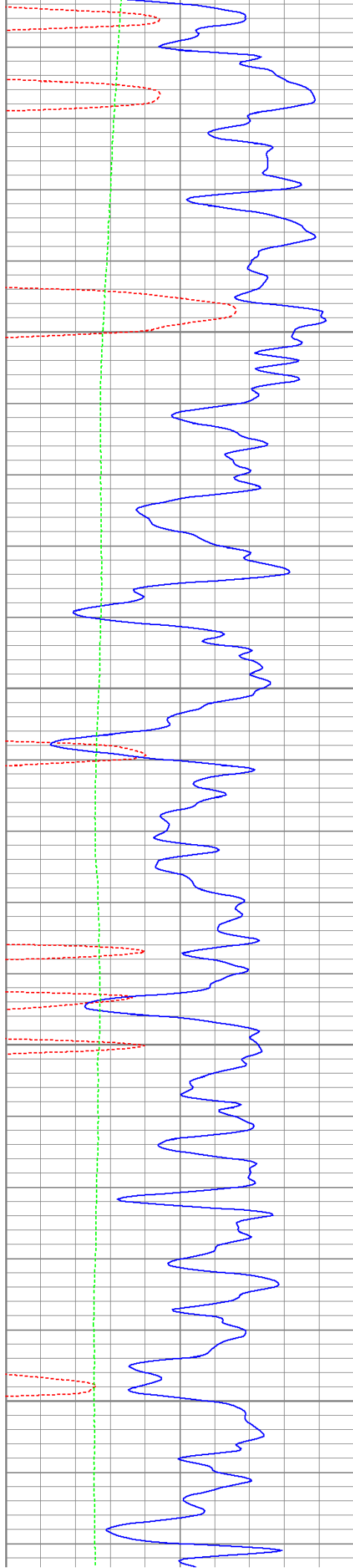
700

750

800





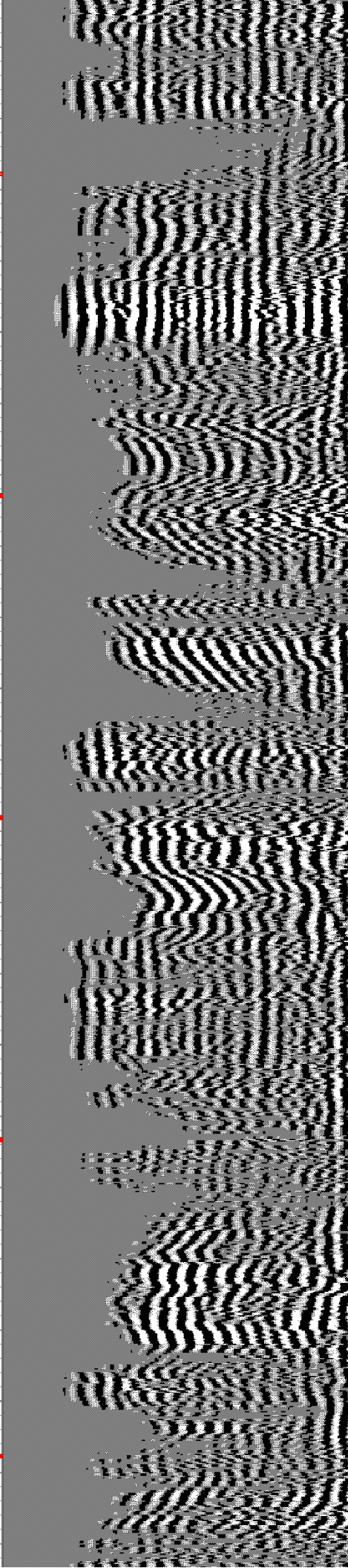
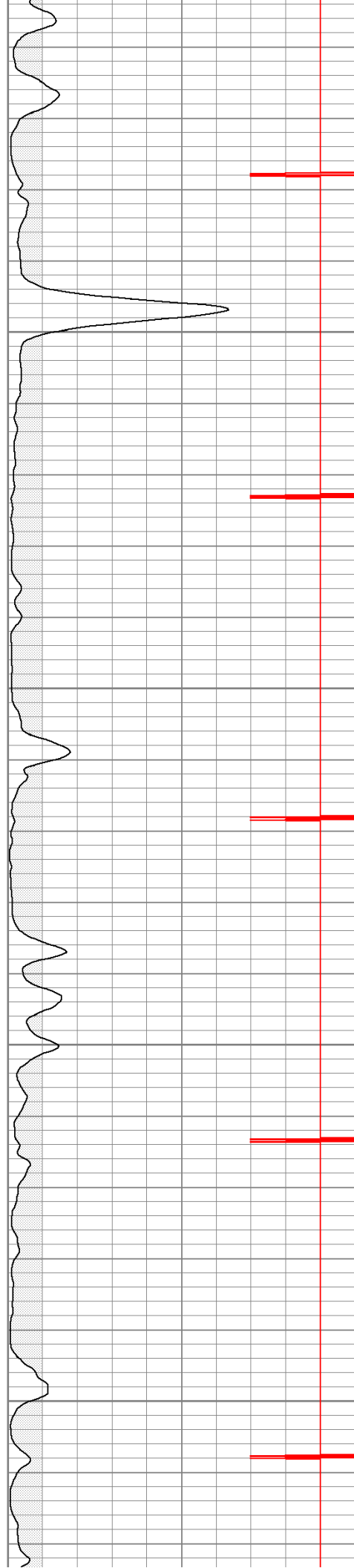


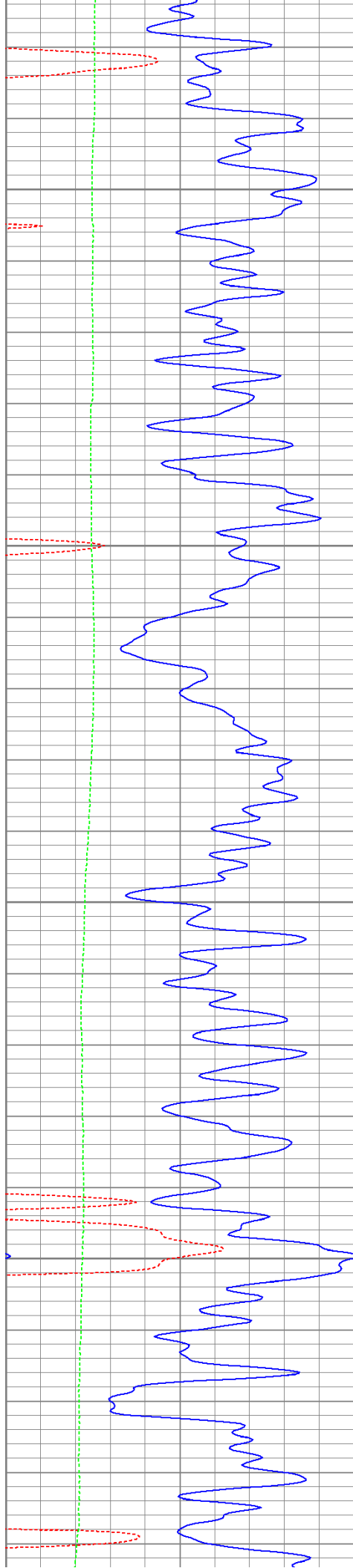
1100

1150

1200

1250



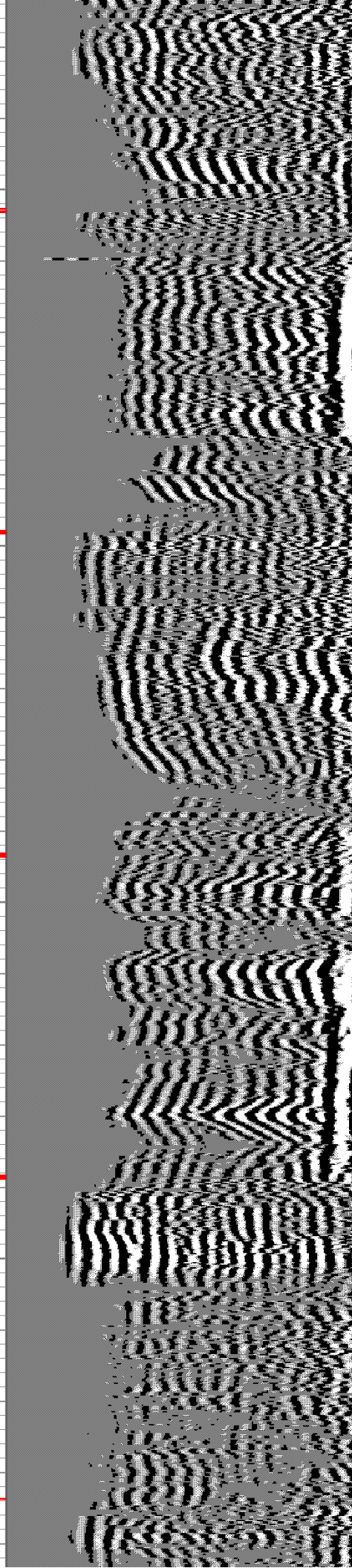
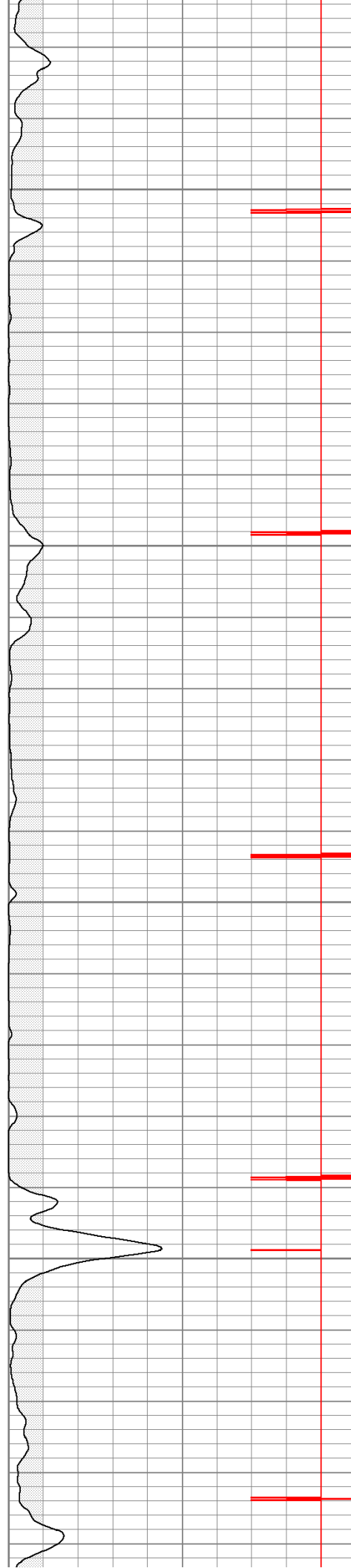


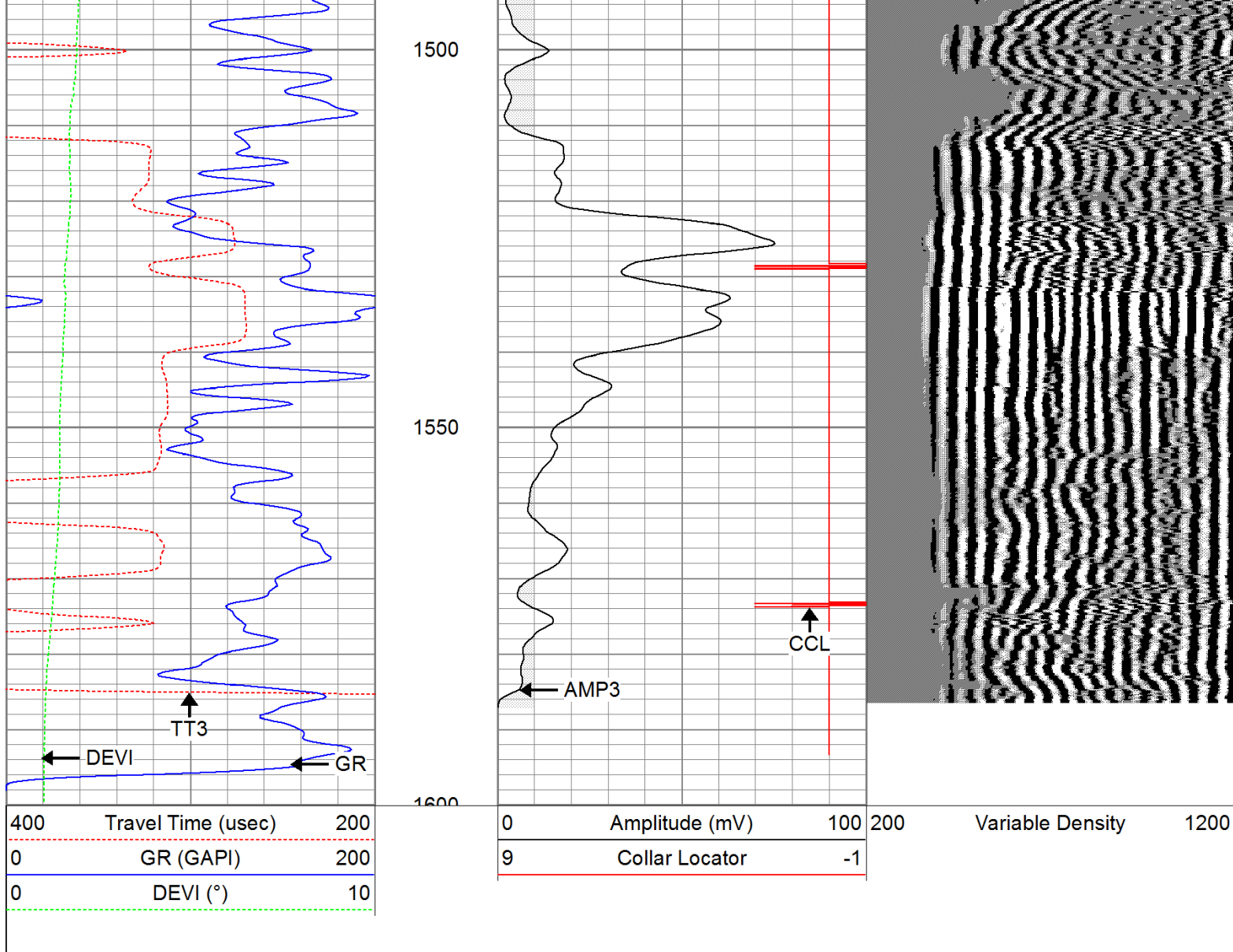
1300

1350

1400

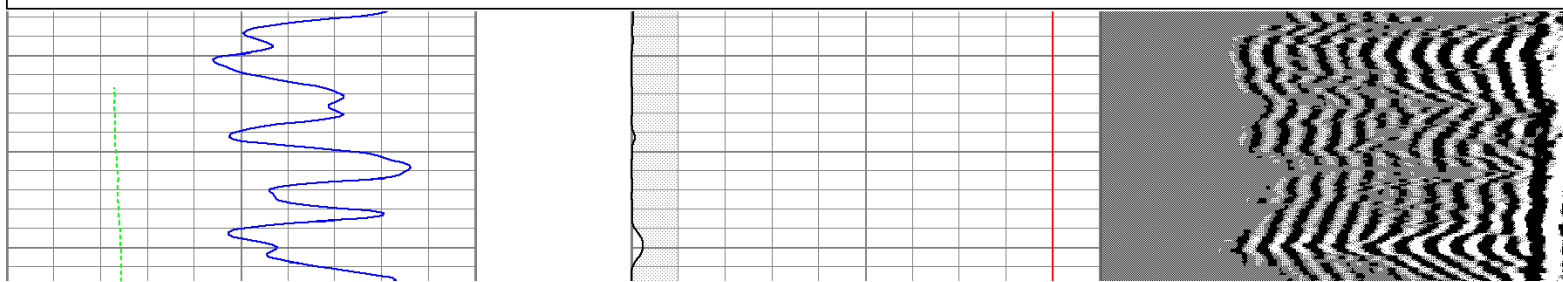
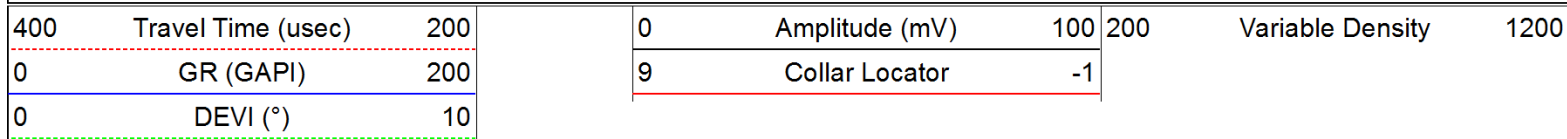
1450

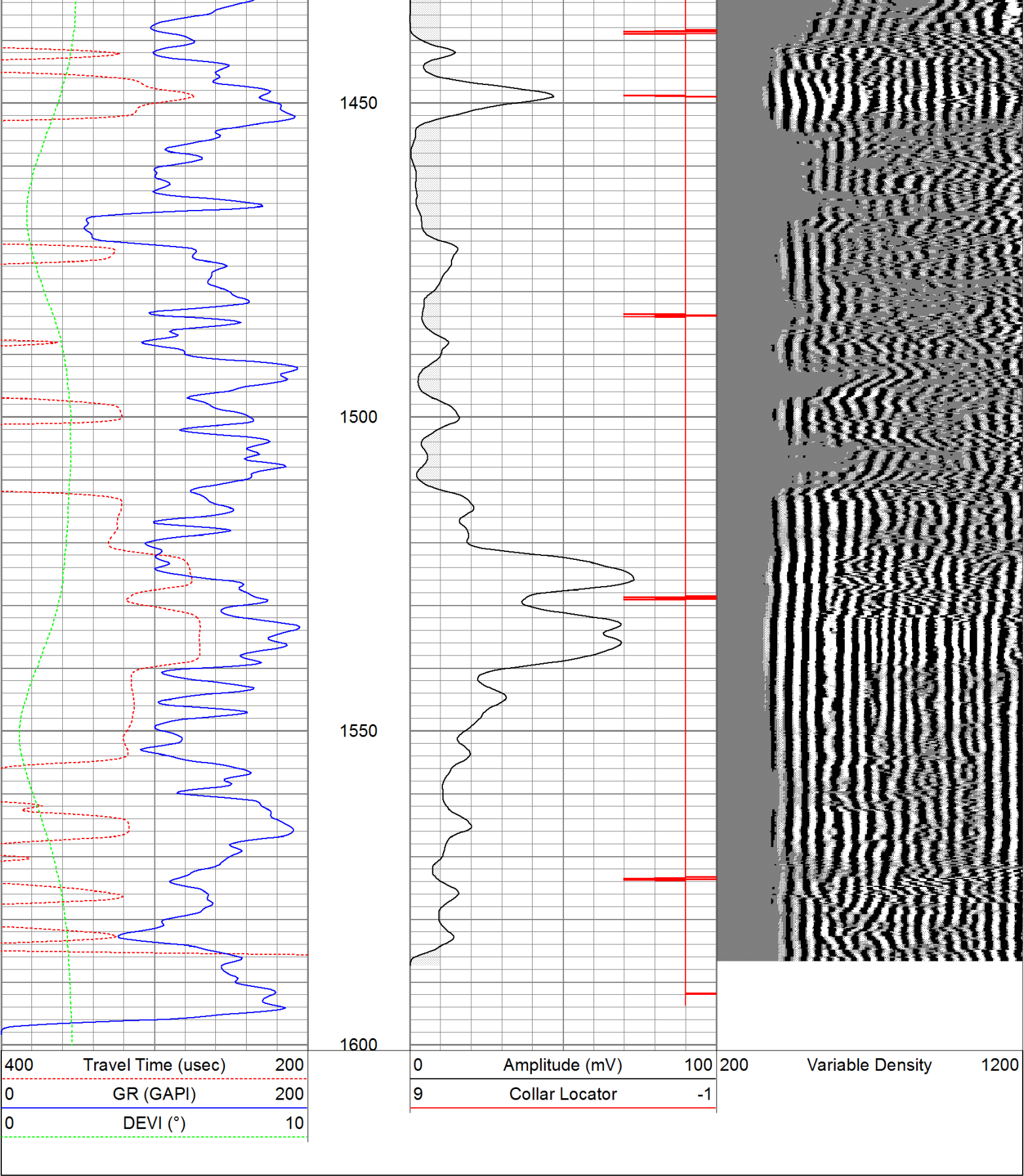




Repeat Pass

Database File: ac20-1582211b.db
 Dataset Pathname: pass2
 Presentation Format: cbldig
 Dataset Creation: Mon Aug 22 07:48:16 2011 by Log Open-Cased 110302
 Charted by: Depth in Feet scaled 1:240





Calibration Report	
Database File:	ac20-1582211b.db
Dataset Pathname:	pass1
Dataset Creation:	Mon Aug 22 07:37:22 2011 by Log Open-Cased 110302
Gamma Ray Calibration Report	
Serial Number:	080616

Tool Model:	275D_INC	
Performed:	Mon Aug 22 07:24:58 2011	
Calibrator Value:	200.0	GAPI
Background Reading:	50.0	cps
Calibrator Reading:	250.0	cps
Sensitivity:	1.0000	GAPI/cps


Inclinometer Calibration Report

Performed:	Mon Aug 22 07:25:54 2011				
	Low Read.	High Read.	Low Ref.	High Ref.	
X Accelerometer	-3585.20	3595.40	-1.00	1.00	gee
Y Accelerometer	-3619.40	3520.00	-1.00	1.00	gee
Z Accelerometer					

Cement Bond Log Calibration Report

Serial Number:	081024		
Tool Model:	PROBEDIGITALCBL		
Performed:	Mon Aug 22 07:24:34 2011		
Depth:	138.299	ft	
Casing Diameter:	5.5	in	
	3' Spacing	5' Spacing	
Signal Zero:	0	0	mV
Calibrated Amplitude:	85	85	mV
Reading at Signal Zero:	-0.00625	-0.00703125	V
Reading in Free Pipe:	1.56453	1.18582	V
Gain:	54.1134	71.2581	
Offset:	0.338209	0.501034	

Sensor	Offset (ft)	Schematic	Description	Len (ft)	OD (in)	Wt (lb)
			None	0.75	1.50	5.00
WVF3	14.75		CBL-PROBEDIGITALCBL (081024) PROBE DIGITAL CBL	8.75	2.75	106.50
WVF5	13.75					
			X	3.00	1.69	25.00
CCL	6.50					

ACCX	4.83		GR-275D_INC (080616) 2-3/4" GR-CCL with Inclination	4.50	2.75	50.00
ACCY	4.83					
ACCZ	4.83					
GR	3.83			X	3.00	1.69
Dataset: ac20-1582211b.db: field/well/run1/pass1 Total Length: 20.00 ft Total Weight: 211.50 lb O.D. 2.75 in						