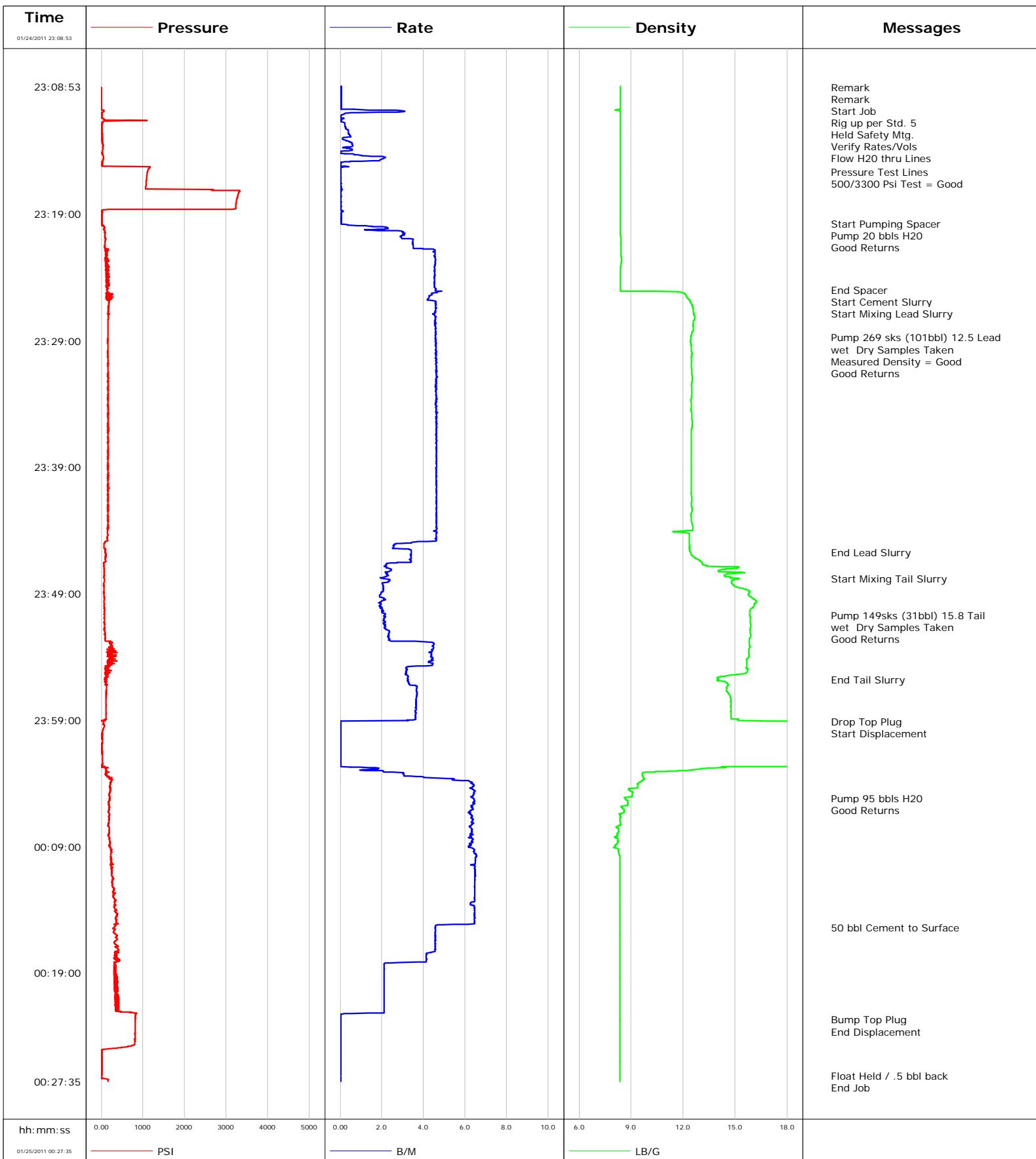


Well	GMR 8-12C2	Client	Encana Oil Gas
Field	Mamm Creek	SIR No.	476620
Engineer	B. Farnham	Job Type	9 5/8" Surface
Country	United States	Job Date	1-24-2011

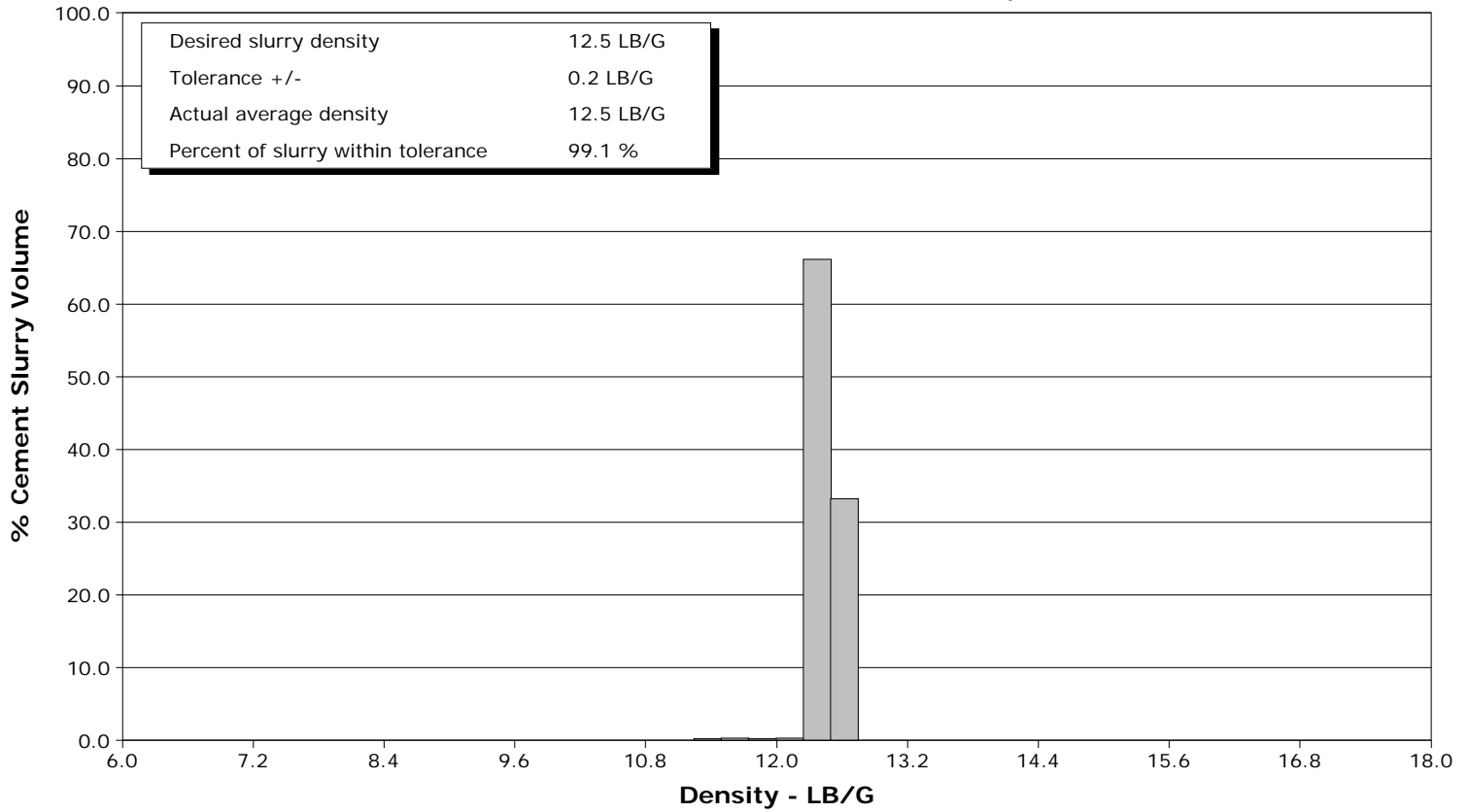


Schlumberger Cementing Qa/Qc Density Report

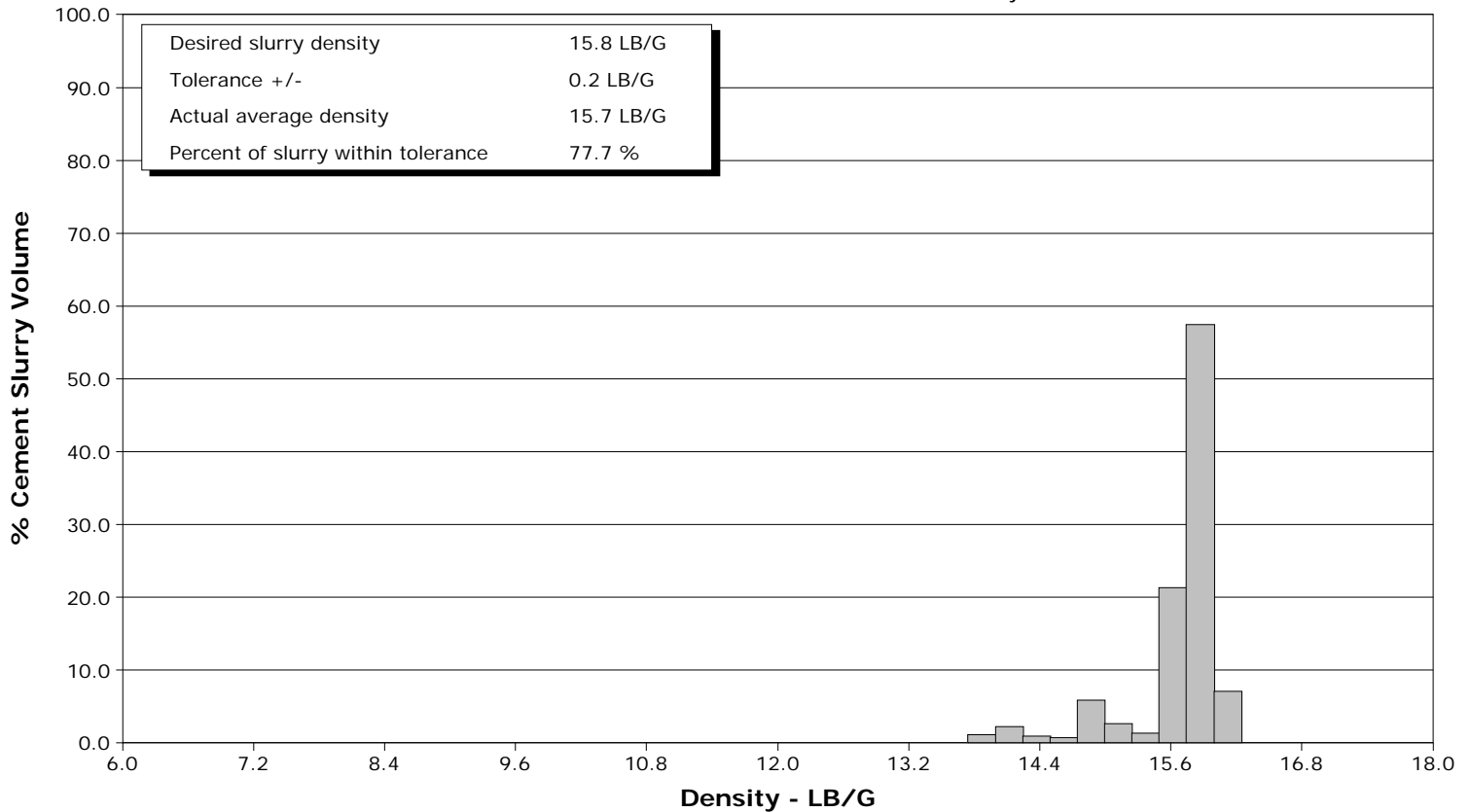
Well GMR 8-12C2
Field Mamm Creek
Engineer B. Farnham
Country United States

Client Encana Oil Gas
SIR No. 476620
Job Type 9 5/8" Surface
Job Date 1-24-2011

Lead Slurry - 01/24/2011 23:25:47 to 01/24/2011 23:45:45



Tail Slurry - 01/24/2011 23:47:48 to 01/24/2011 23:55:48





Cementing Service Report

Customer Encana Oil & Gas	Job Number 476620
-------------------------------------	-----------------------------

Well GMR 8-12C2 8-12C2	Location (legal) Patterson 330	Schlumberger Location Grand Junction	Job Start Jan/24/2011
----------------------------------	--	--	---------------------------------

Field Mamm Creek	Formation Name/Type shale	Deviation	Bit Size 12.3 in	Well MD 1270.0 ft	Well TVD 1270.0 ft
----------------------------	-------------------------------------	------------------	----------------------------	-----------------------------	------------------------------

County Garfield	State/Province Colorado	BHP	BHST 100 degF	BHCT 83 degF	Pore Press. Gradient
---------------------------	-----------------------------------	------------	-------------------------	------------------------	-----------------------------

Well Master 0631179843	API/UWI -	Casing/Liner			
----------------------------------	---------------------	---------------------	--	--	--

Rig Name Patterson 330	Drilled For Gas	Service Via Land	Depth, ft	Size, in	Weight, lb/ft	Grade	Thread
----------------------------------	---------------------------	----------------------------	------------------	-----------------	----------------------	--------------	---------------

Offshore Zone	Well Class New	Well Type New Well Completion	60.0	16.000	65.0	N/A	N/A
----------------------	--------------------------	---	------	--------	------	-----	-----

Drilling Fluid Type Bentonite	Max. Density 9.30 lb/gal	Plastic Viscosity	Tubing/Drill Pipe				
---	------------------------------------	--------------------------	--------------------------	--	--	--	--

Service Line Cementing	Job Type 9 5/8" Surface					
----------------------------------	-----------------------------------	--	--	--	--	--

Max. Allowed Tub. Press 1500 psi	Max. Allowed Ann. Press 500 psi	WH Connection Single Cement head	Perforations/Open Hole				
--	---	--	-------------------------------	--	--	--	--

Service Instructions Cement 9 5/8" Surface Casing at 1270ft 20bbls Water 269 12.5ppg Lead 149sks 15.8ppg Tail 80% Annular Excess	Top,	Bottom,	No. of Shots	Total Interval		
--	-------------	----------------	---------------------	-----------------------	--	--

Treat Down Casing	Displacement 95.0 bbl	Packer Type	Packer Depth			
-----------------------------	---------------------------------	--------------------	---------------------	--	--	--

Tubing Vol.	Casing Vol. 95.0 bbl	Annular Vol. 130.0 bbl	Openhole Vol. 180.0 bbl			
--------------------	--------------------------------	----------------------------------	-----------------------------------	--	--	--

Casing/Tubing Secured <input checked="" type="checkbox"/>	1 Hole Vol. Circulated prior to Cement <input checked="" type="checkbox"/>	Casing Tools		Squeeze Job	
--	---	---------------------	--	--------------------	--

Lift Pressure 304 psi	Shoe Type Guide	Squeeze Type			
---------------------------------	---------------------------	---------------------	--	--	--

Pipe Rotated <input type="checkbox"/>	Pipe Reciprocated <input type="checkbox"/>	Shoe Depth 1279.0 ft	Tool Type			
--	---	--------------------------------	------------------	--	--	--

No. Centralizers	Top Plugs 1	Bottom Plugs	Stage Tool Type		Tool Depth
-------------------------	-----------------------	---------------------	------------------------	--	-------------------

Cement Head Type Single			Stage Tool Depth		Tail Pipe Size
-----------------------------------	--	--	-------------------------	--	-----------------------

Job Scheduled For Jan/24/2011 14:00	Arrived on Location Jan/24/2011 14:00	Leave Location Jan/25/2011 01:00	Collar Type Other		Tail Pipe Depth
---	---	--	-----------------------------	--	------------------------

			Collar Depth 1224.0 ft		Sqz. Total Vol.
--	--	--	----------------------------------	--	------------------------

Date	Time 24-hr clock	Treating Pressure PSI	Flow Rate B/M	Density LB/G	Volume BBL	Message
01/24/2011	23:08:29					Started Acquisition
01/24/2011	23:08:53	-137	0.0	8.39	0.0	
01/24/2011	23:08:57					Remark
01/24/2011	23:08:57					Remark
01/24/2011	23:08:57	-137	0.0	8.39	0.0	
01/24/2011	23:08:59					Start Job
01/24/2011	23:08:59	-0	0.0	8.39	0.0	
01/24/2011	23:09:01					Rig up per Std. 5
01/24/2011	23:09:01					Held Safety Mtg.
01/24/2011	23:09:01					Verify Rates/Vols
01/24/2011	23:09:01	-1	0.0	8.39	0.0	
01/24/2011	23:09:02					Flow H2O thru Lines
01/24/2011	23:09:02	-0	0.0	8.39	0.0	
01/24/2011	23:09:29	-0	0.0	8.39	0.0	
01/24/2011	23:09:59	-0	0.0	8.39	0.0	
01/24/2011	23:10:29	-0	0.0	8.39	0.1	
01/24/2011	23:10:59	4	0.5	8.40	0.7	
01/24/2011	23:11:29	59	0.1	8.39	0.7	
01/24/2011	23:11:59	9	0.2	8.39	0.8	
01/24/2011	23:12:29	9	0.4	8.39	0.9	
01/24/2011	23:12:59	22	0.1	8.39	1.1	

Well		Field		Job Start		Customer		Job Number	
GMR 8-12C2 8-12C2		Mamm Creek		Jan/24/2011		Encana Oil & Gas		476620	
Date	Time 24-hr clock	Treating Pressure PSI	Flow Rate B/M	Density LB/G	Volume BBL	Message			
01/24/2011	23:13:59	26	0.4	8.39	1.6				
01/24/2011	23:14:29	53	2.1	8.39	1.9				
01/24/2011	23:14:59	20	0.0	8.38	2.5				
01/24/2011	23:15:29	1128	0.0	8.38	2.6				
01/24/2011	23:15:40					Pressure Test Lines			
01/24/2011	23:15:40	1110	0.0	8.38	2.6				
01/24/2011	23:15:42					500/3300 Psi Test = Good			
01/24/2011	23:15:42	1107	0.0	8.38	2.6				
01/24/2011	23:15:59	1095	0.0	8.38	2.6				
01/24/2011	23:16:29	1079	0.0	8.38	2.6				
01/24/2011	23:16:59	1066	0.0	8.38	2.6				
01/24/2011	23:17:29	3284	0.0	8.38	2.6				
01/24/2011	23:17:59	3245	0.0	8.38	2.6				
01/24/2011	23:18:29	3229	0.0	8.38	2.6				
01/24/2011	23:18:59	10	0.1	8.38	2.7				
01/24/2011	23:19:29	8	0.0	8.39	2.7				
01/24/2011	23:19:45					Start Pumping Spacer			
01/24/2011	23:19:45	8	0.0	8.38	2.7				
01/24/2011	23:19:47					Pump 20 bbls H2O			
01/24/2011	23:19:47	15	0.1	8.39	2.7				
01/24/2011	23:19:48					Good Returns			
01/24/2011	23:19:48	5	0.1	8.39	2.7				
01/24/2011	23:19:59	59	1.5	8.39	2.8				
01/24/2011	23:20:29	80	3.0	8.39	4.0				
01/24/2011	23:20:59	110	3.5	8.40	5.5				
01/24/2011	23:21:29	83	3.5	8.41	7.2				
01/24/2011	23:21:59	98	4.5	8.40	9.2				
01/24/2011	23:22:29	103	4.6	8.44	11.5				
01/24/2011	23:22:59	155	4.6	8.41	13.8				
01/24/2011	23:23:29	190	4.5	8.39	16.0				
01/24/2011	23:23:59	114	4.5	8.38	18.3				
01/24/2011	23:24:29	131	4.5	8.38	20.6				
01/24/2011	23:24:58					End Spacer			
01/24/2011	23:24:58	147	4.6	8.37	22.8				
01/24/2011	23:24:59	127	4.6	8.37	22.8				
01/24/2011	23:25:01					Start Cement Slurry			
01/24/2011	23:25:01	120	4.6	8.37	23.0				
01/24/2011	23:25:29	147	4.3	12.18	25.1				
01/24/2011	23:25:47					Start Mixing Lead Slurry			
01/24/2011	23:25:47	231	4.2	12.36	26.4				
01/24/2011	23:25:59	177	4.6	12.43	27.3				
01/24/2011	23:26:29	176	4.6	12.57	29.6				
01/24/2011	23:26:59	172	4.5	12.64	31.8				
01/24/2011	23:27:29	160	4.5	12.58	34.1				
01/24/2011	23:27:59	165	4.6	12.59	36.4				
01/24/2011	23:28:29	158	4.6	12.50	38.7				
01/24/2011	23:28:44					Pump 269 sks (101bbl) 12.5 Lead			
01/24/2011	23:28:44					wet Dry Samples Taken			
01/24/2011	23:28:44					Measured Density = Good			
01/24/2011	23:28:44	159	4.6	12.45	39.9				
01/24/2011	23:28:59	153	4.6	12.42	41.0				
01/24/2011	23:29:13					Good Returns			
01/24/2011	23:29:13	156	4.6	12.45	42.1				
01/24/2011	23:29:29	158	4.6	12.47	43.3				

Well		Field		Job Start		Customer		Job Number	
GMR 8-12C2 8-12C2		Mamm Creek		Jan/24/2011		Encana Oil & Gas		476620	
Date	Time 24-hr clock	Treating Pressure PSI	Flow Rate B/M	Density LB/G	Volume BBL	Message			
01/24/2011	23:30:29	159	4.6	12.48	47.9				
01/24/2011	23:30:59	164	4.6	12.48	50.2				
01/24/2011	23:31:29	159	4.6	12.51	52.5				
01/24/2011	23:31:59	168	4.6	12.54	54.8				
01/24/2011	23:32:29	155	4.6	12.48	57.1				
01/24/2011	23:32:59	157	4.6	12.49	59.4				
01/24/2011	23:33:29	156	4.6	12.49	61.7				
01/24/2011	23:33:59	158	4.6	12.47	64.0				
01/24/2011	23:34:29	157	4.6	12.45	66.4				
01/24/2011	23:34:59	171	4.6	12.50	68.7				
01/24/2011	23:35:29	156	4.6	12.54	71.0				
01/24/2011	23:35:59	174	4.6	12.49	73.3				
01/24/2011	23:36:29	166	4.6	12.47	75.6				
01/24/2011	23:36:59	151	4.6	12.49	77.9				
01/24/2011	23:37:29	160	4.6	12.47	80.2				
01/24/2011	23:37:59	153	4.6	12.47	82.5				
01/24/2011	23:38:29	163	4.6	12.47	84.8				
01/24/2011	23:38:59	178	4.6	12.48	87.1				
01/24/2011	23:39:29	169	4.6	12.47	89.5				
01/24/2011	23:39:59	171	4.6	12.47	91.8				
01/24/2011	23:40:29	176	4.6	12.46	94.1				
01/24/2011	23:40:59	160	4.6	12.46	96.4				
01/24/2011	23:41:29	152	4.6	12.51	98.7				
01/24/2011	23:41:59	156	4.6	12.47	101.0				
01/24/2011	23:42:29	164	4.6	12.51	103.3				
01/24/2011	23:42:59	176	4.6	12.47	105.6				
01/24/2011	23:43:29	163	4.6	12.52	107.9				
01/24/2011	23:43:59	164	4.6	12.55	110.2				
01/24/2011	23:44:29	151	4.6	12.36	112.5				
01/24/2011	23:44:59	88	3.4	12.37	114.8				
01/24/2011	23:45:29	95	3.1	12.37	116.1				
01/24/2011	23:45:45					End Lead Slurry			
01/24/2011	23:45:45	98	3.4	12.44	117.0				
01/24/2011	23:45:59	110	3.4	12.51	117.8				
01/24/2011	23:46:29	100	3.4	13.01	119.5				
01/24/2011	23:46:59	68	2.3	15.11	120.7				
01/24/2011	23:47:29	71	2.2	14.52	121.9				
01/24/2011	23:47:48					Start Mixing Tail Slurry			
01/24/2011	23:47:48	65	2.0	14.94	122.6				
01/24/2011	23:47:59	74	2.4	14.80	123.0				
01/24/2011	23:48:29	62	2.1	15.03	124.0				
01/24/2011	23:48:59	60	2.0	15.78	125.1				
01/24/2011	23:49:29	77	2.2	16.11	126.0				
01/24/2011	23:49:59	70	1.9	16.10	127.0				
01/24/2011	23:50:29	69	2.0	15.83	128.0				
01/24/2011	23:50:42					Pump 149sks (31bbl) 15.8 Tail			
01/24/2011	23:50:42					wet Dry Samples Taken			
01/24/2011	23:50:42	74	2.1	15.84	128.5				
01/24/2011	23:50:43					Good Returns			
01/24/2011	23:50:43	76	2.1	15.84	128.5				
01/24/2011	23:50:59	72	2.1	15.88	129.1				
01/24/2011	23:51:29	76	2.1	15.90	130.1				
01/24/2011	23:51:59	79	2.3	15.86	131.2				
01/24/2011	23:52:29	96	2.3	15.87	132.4				

Well		Field		Job Start		Customer		Job Number	
GMR 8-12C2 8-12C2		Mamm Creek		Jan/24/2011		Encana Oil & Gas		476620	
Date	Time 24-hr clock	Treating Pressure PSI	Flow Rate B/M	Density LB/G	Volume BBL	Message			
01/24/2011	23:53:29	282	4.4	15.79	136.2				
01/24/2011	23:53:59	133	4.4	15.80	138.4				
01/24/2011	23:54:29	269	4.3	15.68	140.6				
01/24/2011	23:54:59	110	3.2	15.74	142.5				
01/24/2011	23:55:29	101	3.2	14.68	144.1				
01/24/2011	23:55:48					End Tail Slurry			
01/24/2011	23:55:48	82	3.3	14.02	145.1				
01/24/2011	23:55:59	83	3.3	14.37	145.7				
01/24/2011	23:56:29	124	3.7	14.52	147.4				
01/24/2011	23:56:59	117	3.7	14.65	149.3				
01/24/2011	23:57:29	116	3.7	14.75	151.1				
01/24/2011	23:57:59	114	3.6	14.75	152.9				
01/24/2011	23:58:29	118	3.6	14.77	154.7				
01/24/2011	23:58:59	69	3.6	15.17	156.6				
01/24/2011	23:59:07					Drop Top Plug			
01/24/2011	23:59:07	51	0.0	23.59	156.9				
01/24/2011	23:59:08					Start Displacement			
01/24/2011	23:59:08	68	0.0	25.00	156.9				
01/24/2011	23:59:29	77	0.0	25.00	156.9				
01/24/2011	23:59:59	26	0.0	20.66	156.9				
01/25/2011	00:00:29	12	0.0	20.45	156.9				
01/25/2011	00:00:59	9	0.0	20.32	156.9				
01/25/2011	00:01:29	12	0.0	20.22	156.9				
01/25/2011	00:01:59	33	0.0	20.15	156.9				
01/25/2011	00:02:29	36	0.0	20.13	156.9				
01/25/2011	00:02:59	126	0.9	12.40	157.2				
01/25/2011	00:03:29	194	3.7	9.68	158.6				
01/25/2011	00:03:59	211	6.3	9.43	161.3				
01/25/2011	00:04:29	219	6.4	8.83	164.4				
01/25/2011	00:04:59	197	6.4	9.06	167.7				
01/25/2011	00:05:11					Pump 95 bbls H2O			
01/25/2011	00:05:11	208	6.4	8.64	168.9				
01/25/2011	00:05:29	169	6.5	8.81	170.9				
01/25/2011	00:05:30					Good Returns			
01/25/2011	00:05:30	182	6.4	8.81	171.0				
01/25/2011	00:05:59	192	6.4	8.50	174.0				
01/25/2011	00:06:29	199	6.3	8.38	177.2				
01/25/2011	00:06:59	181	6.3	8.37	180.3				
01/25/2011	00:07:29	189	6.2	8.12	183.5				
01/25/2011	00:07:59	195	6.3	8.22	186.6				
01/25/2011	00:08:29	200	6.3	8.24	189.8				
01/25/2011	00:08:59	184	6.1	8.10	192.9				
01/25/2011	00:09:29	255	6.4	8.28	196.1				
01/25/2011	00:09:59	225	6.5	8.37	199.4				
01/25/2011	00:10:29	238	6.4	8.37	202.6				
01/25/2011	00:10:59	250	6.5	8.36	205.8				
01/25/2011	00:11:29	264	6.5	8.36	209.1				
01/25/2011	00:11:59	268	6.5	8.36	212.3				
01/25/2011	00:12:29	302	6.5	8.36	215.5				
01/25/2011	00:12:59	278	6.5	8.36	218.8				
01/25/2011	00:13:29	324	6.3	8.37	222.0				
01/25/2011	00:13:59	339	6.5	8.36	225.2				
01/25/2011	00:14:29	368	6.5	8.36	228.4				
01/25/2011	00:14:59	352	6.5	8.36	231.6				

Well		Field		Job Start		Customer		Job Number	
GMR 8-12C2 8-12C2		Mamm Creek		Jan/24/2011		Encana Oil & Gas		476620	
Date	Time 24-hr clock	Treating Pressure PSI	Flow Rate B/M	Density LB/G	Volume BBL	Message			
01/25/2011	00:15:24	304	4.6	8.36	233.9				
01/25/2011	00:15:29	286	4.6	8.36	234.3				
01/25/2011	00:15:59	356	4.6	8.36	236.6				
01/25/2011	00:16:29	344	4.6	8.36	238.9				
01/25/2011	00:16:59	349	4.6	8.36	241.2				
01/25/2011	00:17:29	368	4.2	8.36	243.4				
01/25/2011	00:17:59	346	4.2	8.36	245.5				
01/25/2011	00:18:29	304	2.1	8.36	247.0				
01/25/2011	00:18:59	324	2.1	8.36	248.0				
01/25/2011	00:19:29	316	2.1	8.36	249.1				
01/25/2011	00:19:59	344	2.1	8.36	250.1				
01/25/2011	00:20:29	322	2.1	8.36	251.2				
01/25/2011	00:20:59	417	2.1	8.36	252.2				
01/25/2011	00:21:29	332	2.1	8.36	253.3				
01/25/2011	00:21:59	338	2.1	8.36	254.4				
01/25/2011	00:22:29	816	0.0	8.36	254.8				
01/25/2011	00:22:42					Bump Top Plug			
01/25/2011	00:22:42	817	0.0	8.36	254.8				
01/25/2011	00:22:43					End Displacement			
01/25/2011	00:22:43	817	0.0	8.36	254.8				
01/25/2011	00:22:59	815	0.0	8.36	254.8				
01/25/2011	00:23:29	813	0.0	8.36	254.8				
01/25/2011	00:23:59	811	0.0	8.36	254.8				
01/25/2011	00:24:29	808	0.0	8.36	254.9				
01/25/2011	00:24:59	298	0.0	8.36	254.9				
01/25/2011	00:25:29	8	0.0	8.36	254.9				
01/25/2011	00:25:59	7	0.0	8.36	254.9				
01/25/2011	00:26:29	6	0.0	8.36	254.9				
01/25/2011	00:26:59	6	0.0	8.36	254.9				
01/25/2011	00:27:07					Float Held / .5 bbl back			
01/25/2011	00:27:07	6	0.0	8.36	254.9				
01/25/2011	00:27:13					End Job			
01/25/2011	00:27:13	6	0.0	8.36	254.9				

Post Job Summary

Average Pump Rates, bbl/min				Volume of Fluid Injected, bbl			
Slurry	N2	Mud	Maximum Rate	Total Slurry	Mud	Spacer	N2
5.0			6.5	132.0		20.0	
Treating Pressure Summary, psi				Breakdown Fluid			
Maximum	Final	Average	Bump Plug to	Breakdown	Type	Volume	Density
3000	900	150	900		FreshWater	285.0 bbl	8.34 lb/gal
Avg. N2 Percent	Designed Slurry Volume		Displacement	Mix Water Temp	Cement Circulated to Surface?	Volume	
	132.0 bbl			70 degF	<input checked="" type="checkbox"/>	50.0 bbl	
Customer or Authorized Representative				Schlumberger Supervisor		Circulation Lost	Job Completed
Arvid Mosnes				B. Farnham		<input type="checkbox"/>	<input checked="" type="checkbox"/>
						-	-