

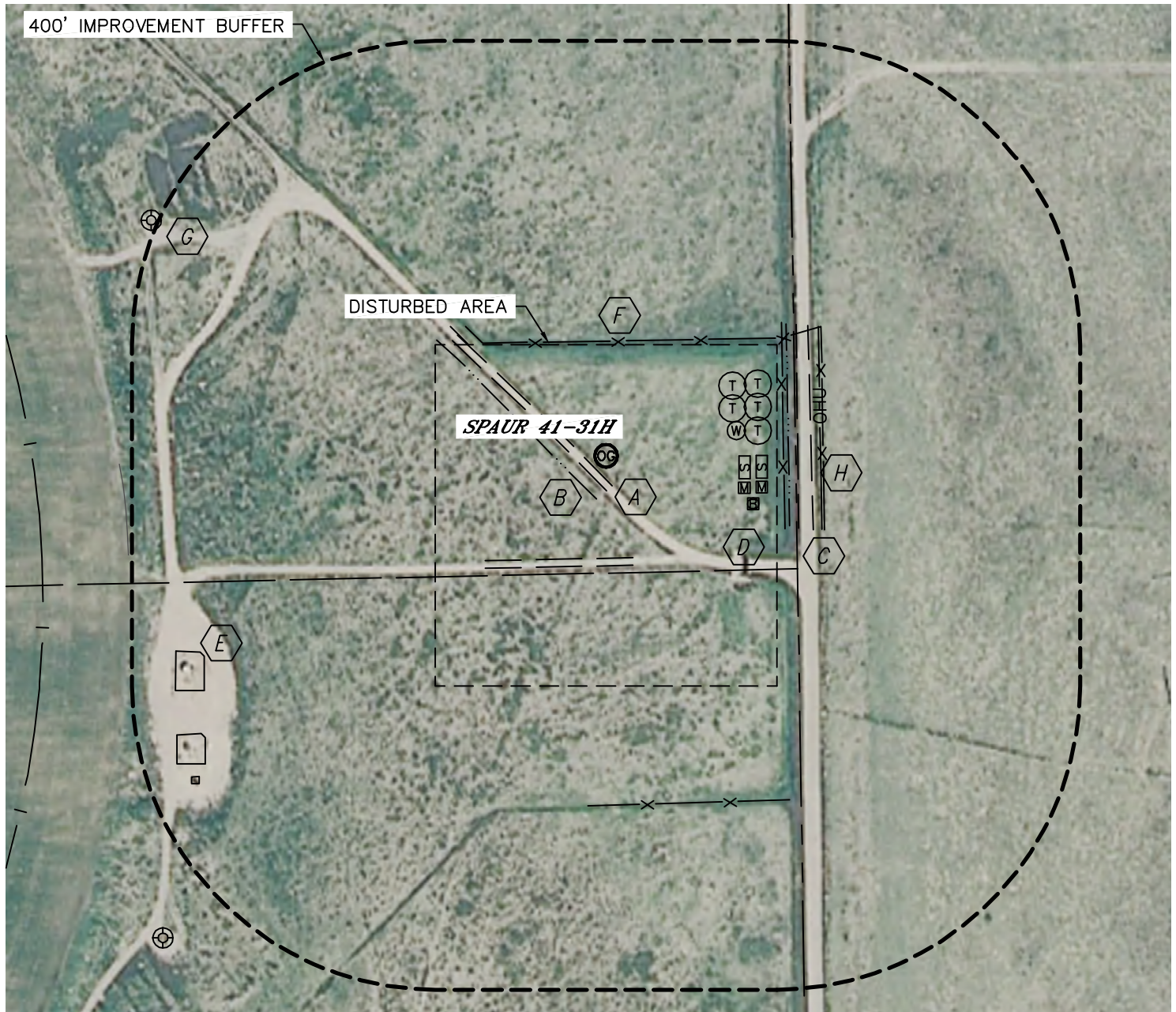


Lat40°, Inc. 1635 Foxtrail Drive, Suite 325 Loveland, CO 970-776-3321

## LOCATION DRAWING

SPAUR 41-31H

SECTION: 31  
TOWNSHIP: 7N  
RANGE: 63W



### IMPROVEMENTS:

- |  |   |
|--|---|
| <b>A</b> FIELD ROAD 27' SW, 140' S                                   | <b>F</b> FENCE 151' N, 234' E, 286' E, 460' S |
| <b>B</b> BARROW DITCH 49' SW, 234' NW, 241' E                        | <b>G</b> EX O/G WELL 675' NW (ZAHOUREK 41-31) |
| <b>C</b> PRIVATE ROAD (CR 63) 253' E                                 | <b>H</b> OVERHEAD UTILITY 283' E              |
| <b>D</b> CATTLE GUARD 221' SE  |   |
| <b>E</b> EX. PRODUCTION EQUIPMENT (PDC)<br>592' SW, 644' SW, 683' SW |   |

NEAREST: BUILDING 889' N, PRIVATE ROAD (CR 63) 253' E PUBLIC ROAD (CR 74) 4130' S,  
ABOVE GROUND UTILITY 283' E, RAILROAD 5280'+, PROPERTY LINE 151' N