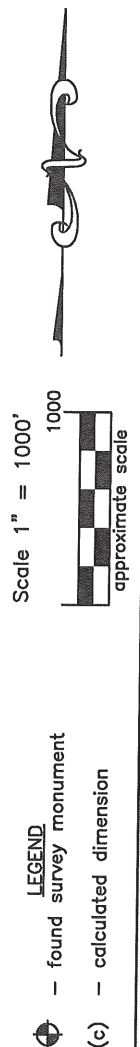
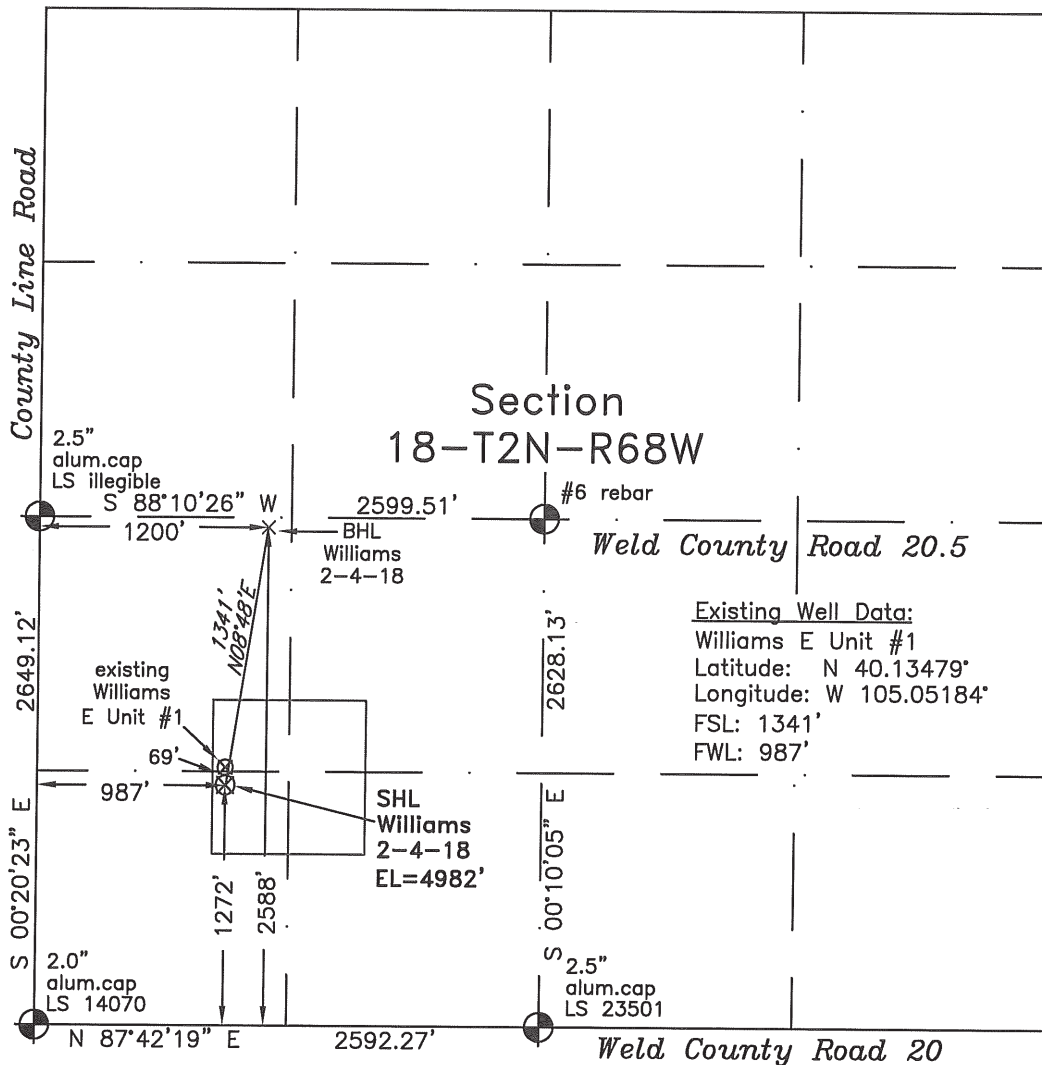


WELL LOCATION CERTIFICATE

THIS MAP DOES NOT REPRESENT A BOUNDARY SURVEY



In accordance with a request from Danny Nelson of EnCana Oil & Gas (USA) Inc., Frederick Land Surveying, Inc. has determined the location of the **Williams 2-4-18** well site to be SHL: 1272' FSL and 987' FWL, (BHL 2588' FSL and 1200' FWL) as measured at ninety (90) degrees from the section lines of Section 18, Township 2 North, Range 68 West, 6th Principal Meridian, County of Weld, CO.

Proposed Surface Hole Data:

Latitude: N 40.13463° BHL(40.13827°)

Longitude: W 105.05184° BHL(105.05108°)

Nearest: Building 539' west Above Ground Utility 1333' north

Public Road 1353' north Railroad 10,700' northwest

Property Line: 427' west

PDOP: 1.9

Notes:

- 1) Bearings and distances based on NAD 83 Colorado North State Plane Coordinates using RTK GPS observations taken 4/19/10 by operator Tom Winans.
- 2) Conversion factor to ground (1.000276491).
- 3) Elevations based on NAVD 88 GPS heights and Geoid 2003 corrections.
- 4) See improvement map for visible improvements within 400 feet of pad site.
- 5) The location falls on agricultural land.

NOTICE: According to Colorado law you must commence any legal action based upon any defect in this W.L.C. within three years after you first discover such defect. In no event may any action based upon any defect in this W.L.C. be commenced more than ten years from this said date of the certification shown hereon.

I hereby certify that this Well Location Certificate was prepared by me or under my direct supervision on 4/20/10 for and on behalf of EnCana Oil & Gas (USA) Inc. that it is not a Land Survey, Plat or an Improvement Survey, Plat and that it is not to be relied upon for establishment of fences, buildings, or other future improvement lines.

Alex Rondan Parking LS#34176

Job #: 05102.006 4-20-2010